

50D COMPACT EXCAVATOR



JOHN DEERE

PARTS CATALOG **50D EXCAVATOR (SN 275000-)**

PC10117 (Aug-19) English

Worldwide Construction and Forestry Division

Worldwide Edition
Printed in U.S.A. (Revised)
COPYRIGHT © 2019
DEERE & COMPANY
Moline, Illinois
All rights reserved

50D Compact Excavator

TX1074198A A.1



(50D Compact Excavator)

(SN 275000–)

(Manufactured 2009–2012)

(Specifications and design are subject to change without notice)

To the Customer

The part numbers in this parts catalog were correct at the time your catalog was published. It is our policy to constantly improve our machines, and therefore, part numbers may change. When ordering parts, verify part numbers through your dealer.

SI Units of Measure

Metric dimensions are given, where applicable, throughout this parts catalog.

Bolt and Cap Screw Strength Identification

Bolts and cap screws required to have high-strength qualities equivalent to SAE grade 8 are identified throughout this catalog by the description HS SAE 8 (10.9 for metric). All standard bolts and cap screws are SAE grade 5 (metric 8.8) or lower.

Serial Number Listing Information

Serial number information is listed to show on which machines each part can be used; for example:

- **The part can be used on all products.**
- 000000** - **The part can be used on products beginning with the serial number listed.**
- **000000** **The part can be used on products up to and including the serial number listed.**
- 000000** - **000000** **The part can be used on products between and including the serial number listed.**

When XXXXXX's are listed in place of a serial number, a serial number change was made, but the exact serial number was not available when the catalog was produced.

If product identification numbers or serial numbers are required for warranty claims or correspondence pertaining to this product, it is extremely important that all characters be furnished. This point cannot be overemphasized.

Direction Arrow

Arrows are used with illustrations to indicate the front of the unit. "Right-Hand" and "Left-Hand" sides are determined by facing in direction of machine forward travel.

Box-enclosed Illustrations

A key number, shown in the parts list, is assigned to a box enclosing all parts sold as a service assembly. A box not keyed includes non-current parts.

Complete Goods Listings

Complete Goods are listed in bold face type. Order separately. Do not include on replacement part order.

Orientation of Engine

"Right Hand" and "Left Hand" sides are determined by standing at the flywheel and facing the engine.

John Deere Reman Components

The service parts listed in this catalog are intended for the repair of original equipment components. Although most service parts may be used to repair remanufactured components, the remanufacturing process may change parts sufficiently so that service parts are inadequate or not usable.

Bucket Teeth

Additional bucket replacement parts can be found in the bucket components catalog. PC 9555 bucket teeth

Serial Number Location

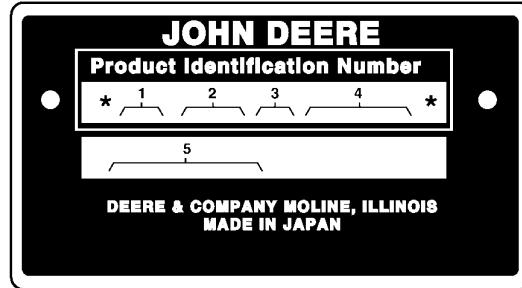
Each 50D excavator has seven serial number plates: A product identification number plate, an engine serial number plate, a hydraulic pump serial number plate, a left-hand travel device serial number plate, a right-hand propel motor serial number plate, a swing motor serial number plate and a control valve serial number plate.

- The product identification plate is located at the front of the upperstructure to the right of the cab.
- The engine serial number plate is located on the top of the cylinder head cover.
- The hydraulic pump serial number plate is located near the front of the hydraulic pump
- The swing motor serial number plate is located on the top of the swing motor.
- The right travel device serial number plate is located on the left-hand of the motor.
- The left travel device serial number plate is located on the right-hand of the motor
- The control valve serial number plate is located on the upper left-hand side of the control valve.

If product identification numbers or serial numbers are required for warranty claims or correspondence pertaining to this product. It is extremely important that all characters be furnished. This point cannot be overemphasized.

Product Identification Number

TX1074185 A.1

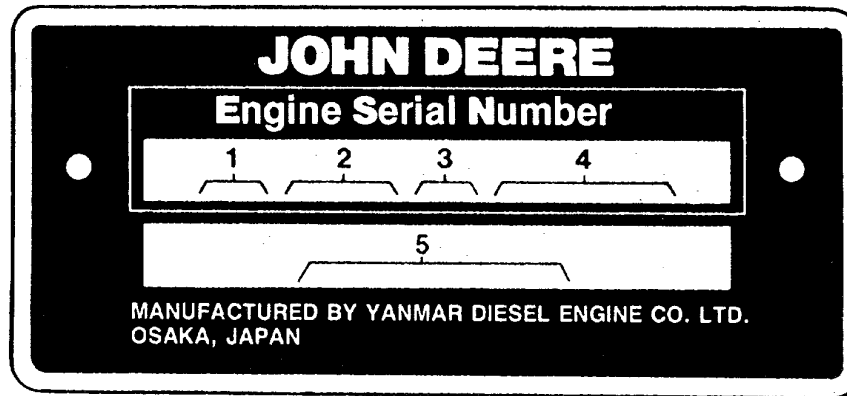


TX1074185

First Line	Designates
FF	Manufacturer — John Deere
50	Model
DX	Configuration
012345	Serial Number (Example)
Second Line	Designates
EXCAVATOR	Unit Type

Engine Serial Number

TX1074189 A.1



TX1074189

First Line	Designates
CH	Manufacturer — Yanmar, Japan
3	Cylinders
D — Diesel	Fuel Type Or Special Condition
123456	Serial Number (Example)
Second Line	Designates
4TN78T	Model — Number

Trademarks

Throughout this parts catalog, you may find the following Deere and Company trademarks:

Best Bid™	CounterParts™	DEERE™ (Deere™)
Dura-Trax™	Fanggs™	Guardian™
HTH™	Jagz™	JDLink™
MARKS™	MIC™ [Machine Information Center]	MTH™
Power Curve™	Powerllel™	PowerShift Plus™
Powerwise™	POWR SAVR™	PowrShift™
ProPath™	Quad-Cool™	Quik-Tatch™
SC-2™	Side-Tracker™	Stinger™
StructureALL™	Swamper™	TMC™ [Total Machine Control]
ValueSelect™	Waratah™	Worksite Pro™
FlexBox™	Funk™	iTorque™
Phoenix™	Phoenix International™	PowerTech™
PowerTech™ E	PowerTech™ M	PowerTech™ Plus
Precision Joint™	SHIFT-O-MATIC™	SWEDA™ (Super Wide Extreme Dual Axle)
TeamMate™	TeamMate™ II	TeamMate™ IV
TMII™	TMIII™	

Remarks and Abbreviations

The following remarks and abbreviations may appear throughout this parts catalog. Refer to the following table for translations.

Phrase	Meaning	Phrase	Meaning
ALSO ORDER, ORD W/	Also Order	MFWD	Mechanical Front Wheel Drive
AMP	Ampere	NA, NOT USED THIS APPL	Not used in this application
APPL, APPL ONLY	This application only	NLA	No longer available
AR	As required	NSEP	Not available separately
ASSY	Complete assembly	OD	Outside diameter
BOAC	Bolt-on cutting edge	OPTIONAL	Optional
CCW	Counterclockwise	OR	Or
COMPLETE	Complete	ORD, ORDER	Order
COMPLETE GOODS	Complete goods	OS	Oversize
CONVENIENCE ASSY, CA	Convenience assembly	OUTER	Outer
CTL, CUT TO LENGTH	Cut to length	PKG, PACKG	Package, Packet of
CW	Clockwise	PTO	Power Take Off
ENGINE	Engine	RATIO	Ratio
FOR	For	REAR	Rear
FRONT	Front	REMAN	Remanufactured
GAS	Gasoline	REPL	Replaces
HFWD	Hydraulic Front-Wheel Drive	RH	Right-hand
HP	Horsepower	SN	Serial number
HS, HEAD MARKED	High Strength, head marked	STD	Standard
ID	Inside diameter	SUB	Replaced by
INCH	Inch	SUB COMPONENTS	Substitute components (of the kit or assy)
INCL KEYS	Includes keys...	SUB FOR	Substitutes for
INCL, INCLUDES	Includes...	TEETH, Z	Number of gear teeth
INCLUDES PARTS/ ITEMS MARKED	Includes parts/items marked...	TK	Thickness
INNER	Inner	UP, UPPER	Upper
KIT	Kit	US	Undersize
L	Number of links	USE UNTIL EXHAUSTED	Use until exhausted
LF, LINE FILL	Line Fill	USE WITH	Use with
LGP	Low Ground Pressure	VEC	Vehicle Electronic Controller
LGTH	Length	VLC	Vehicle Load Center
LT	Long Track	WHOLE GOODS	Whole Goods
MAKE FROM, MF	Make from	WT	Wide Tracks
MARKED	Marked	XLT	Extra Long Track
MATCHED SET	Matched set		

Excavatrice compacte 50D

TX1074198A A.1



(Excavatrice compacte 50D)

(NS 275000-)

(fabriqué de 2009 à 2012)

(Les caractéristiques et la conception sont sujettes à modification sans préavis.)

Au client

Les numéros de référence dans ce catalogue de pièces étaient corrects au moment de la publication du catalogue. Nous nous efforçons d'améliorer continuellement nos machines et, par conséquent, les numéros de référence peuvent changer. Lors de la commande de pièces, vérifier les numéros de référence auprès du concessionnaire.

Unités de mesure SI

Les dimensions sont données en unités métriques, le cas échéant, dans ce catalogue de pièces.

Identification de la résistance des boulons

Les boulons devant présenter des caractéristiques de haute résistance de qualité équivalente à la catégorie SAE 8 sont identifiés tout au long de ce catalogue par la description HS, SAE 8 (10,9 métrique). Tous les boulons standard sont de catégorie SAE 5 (8,8 métrique) ou inférieure.

Informations concernant la liste des numéros de série

Le numéro de série est donné dans la liste pour indiquer sur quelles machines chaque pièce peut être utilisée.

- **La pièce peut être utilisée sur tous les produits.**
- 000000** - **La pièce peut être utilisée sur tous les produits à partir du numéro de série indiqué.**
- **000000** **La pièce peut être utilisée sur tous les produits jusqu'au numéro de série indiqué inclus.**
- 000000** - **000000** **La pièce peut être utilisée sur tous les produits entre les numéros de série indiqués inclus.**

Le XXXXXX à la place du numéro de série signale que celui-ci a été modifié mais que le nouveau numéro de série n'était pas encore disponible au moment de la publication du catalogue.

Si les numéros d'identification ou de série du produit sont nécessaires pour les réclamations sous garantie ou dans le cadre d'une correspondance concernant le produit, il est essentiel que l'ensemble des caractères soit indiqué. On ne peut trop insister sur ce point.

Flèche directionnelle

Les flèches sont utilisées avec les illustrations pour indiquer l'avant de l'unité. Les côtés "droit" et "gauche" sont déterminés en faisant face au sens de marche avant de la machine.

Illustrations encadrées

Un numéro de légende, indiqué dans la liste de pièces, est attribué à un encadré renfermant toutes les pièces vendues comme ensemble de rechange. Un encadré sans légende contient des pièces périmées.

Listes de marchandises complètes

Les marchandises complètes sont indiquées en caractères gras. À commander séparément. Ne pas inclure sur la commande de pièces de rechange.

Orientation du moteur

Les côtés "droit" et "gauche" sont déterminés en se mettant devant le volant-moteur et en faisant face au moteur.

Composants John Deere Reman

Les pièces de rechange répertoriées dans ce catalogue sont destinées à la réparation des composants d'équipement d'origine. Bien que la plupart des pièces de rechange puissent servir à réparer des composants réusinés, la procédure de réusinage peut modifier les pièces suffisamment pour que les pièces de rechange ne conviennent plus ou soient hors d'usage.

Dents de benne

D'autres pièces de rechange de la benne sont indiquées dans le catalogue de composants de la benne. Dents de benne PC 9555

Emplacement du numéro de série

Chaque excavateur 50D possède sept plaques constructeurs: la plaque de numéro d'identification de produit, la plaque constructeur du moteur, la plaque constructeur de la pompe hydraulique, la plaque constructeur du dispositif de déplacement gauche, la plaque constructeur du moteur de propulsion droit, la plaque constructeur du moteur de pivotement et la plaque constructeur du distributeur.

—La plaque d'identification de produit se trouve sur la partie avant de la superstructure, à droite de la cabine.

—La plaque constructeur du moteur se trouve sur le haut du couvercle de culasse.

—La plaque constructeur de pompe hydraulique se trouve près de la partie avant de la pompe hydraulique.

—La plaque constructeur du moteur de pivotement se trouve sur la partie supérieure du moteur de pivotement.

—La plaque constructeur du dispositif de déplacement droit se trouve sur la partie gauche du moteur.

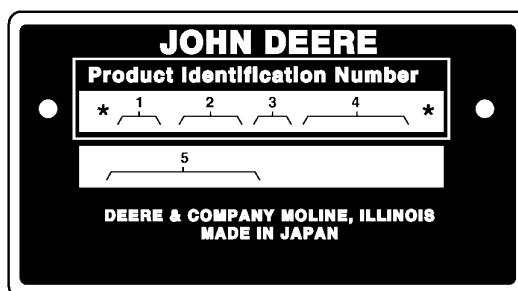
—La plaque constructeur du dispositif de déplacement gauche se trouve sur la partie droite du moteur.

—La plaque constructeur du distributeur se trouve sur la partie supérieure gauche du distributeur.

Si les numéros d'identification ou de série du produit sont nécessaires pour les réclamations sous garantie ou dans le cadre d'une correspondance concernant le produit, il est essentiel que l'ensemble des caractères soit indiqué. On ne peut trop insister sur ce point.

Numéro d'identification de produit

TX1074185 A.1

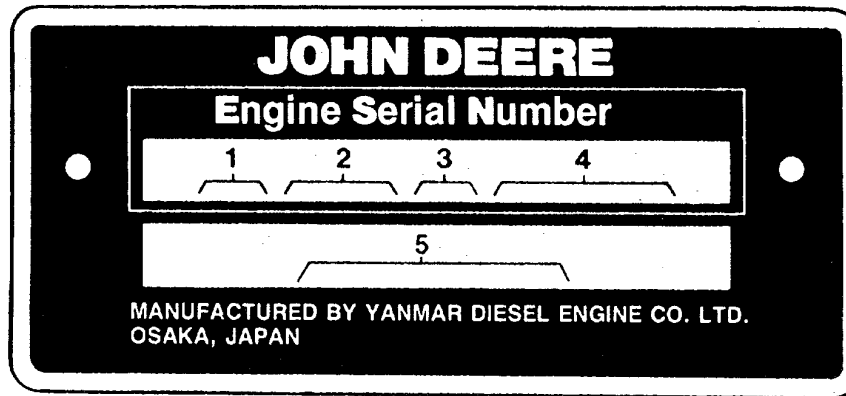


TX1074185

Première ligne	Indique
FF	Fabricant — John Deere
50	Modèle
DX	Configuration
012345	Numéro de série (exemple)
Deuxième ligne	Indique
EXCAVATEUR	Type d'unité

Numéro de série du moteur

TX1074189 A.1



TX1074189

Première ligne	Indique
CH	Fabricant — Yanmar, Japan
3	Vérins
D — Gazole	Type de carburant ou condition particulière
123456	Numéro de série (exemple)
Deuxième ligne	Indique
4TN78T	Modèle — numéro

Marques commerciales

Les marques commerciales Deere and Company suivantes peuvent figurer dans ce catalogue de pièces:

Best Bid™	CounterParts™	DEERE™ (Deere™)
Dura-Trax™	Fanggs™	Guardian™
HTH™	Jagz™	JDLink™
MARKS™	MIC™ [Machine Information Center]	MTH™
Power Curve™	PowerIel™	PowerShift Plus™
Powerwize™	POWR SAVR™	PowrShift™
ProPath™	Quad-Cool™	Quik-Tatch™
SC-2™	Side-Tracker™	Stinger™
StructureALL™	Swamper™	TMC™ [Total Machine Control]
ValueSelect™	Waratah™	Worksite Pro™
FlexBox™	Funk™	iTorque™
Phoenix™	Phoenix International™	PowerTech™
PowerTech™ E	PowerTech™ M	PowerTech™ Plus
Precision Joint™	SHIFT-O-MATIC™	SWEDA™ (Super Wide Extreme Dual Axle)
TeamMate™	TeamMate™ II	TeamMate™ IV
TMII™	TMIII™	

Remarques et abréviations

Les remarques et les abréviations qui suivent peuvent figurer dans ce catalogue pièces. Consulter le tableau suivant pour leurs explications.

Expression	Signification	Expression	Signification
ALSO ORDER, ORD W/	À commander également	MFWD	Pont avant mécanique
AMP	Intensité	NA, NOT USED THIS APPL	Non utilisé pour cette application
APPL, APPL ONLY	Cette application uniquement	NLA	Plus disponible
AR	Selon le besoin	NSEP	Non disponible séparément
ASSY	Montage complet	OD	Diamètre extérieur
BOAC	Bord d'attaque boulonné	OPTIONAL	En option
CCW	Dans le sens antihoraire	OR	Ou
COMPLETE	Terminé	ORD, ORDER	Commande
COMPLETE GOODS	Marchandises complètes	OS	Surdimensionnement
CONVENIENCE ASSY, CA	Ensemble d'appoint	OUTER	Extérieur
CTL, CUT TO LENGTH	Couper à la longueur voulue	PKG, PACKG	Ensemble, paquet de
CW	Sens horaire	PTO	Prise de force
ENGINE	Moteur	RATIO	Rapport
FOR	Pour	REAR	Arrière
FRONT	Avant	REMAN	Réusiné
GAS	Essence	REPL	Remplace
HFWD	Traction avant hydrostatique	RH	Côté droit
HP	Puissance	SN	Numéro de série
HS, HEAD MARKED	Haute résistance, tête marquée	STD	Standard
ID	Diamètre intérieur	SUB	Remplacé par
INCH	Pouce	SUB COMPONENTS	Substituer les composants (du kit ou de l'ensemble)
INCL KEYS	Clés comprises...	SUB FOR	Remplace
INCL, INCLUDES	Comprend...	TEETH, Z	Nombre de dents d'engrenage
INCLUDES PARTS/ ITEMS MARKED	Comprend les pièces/articles marqué(e)s...	TK	Épaisseur
INNER	Intérieur	UP, UPPER	Supérieur
KIT	Kit	US	À cote inférieure
L	Nombre de maillons	USE UNTIL EXHAUSTED	Utiliser jusqu'à épuisement
LF, LINE FILL	Pris de la chaîne	USE WITH	À utiliser avec
LGP	Faible pression au sol	VEC	Contrôleur électronique du véhicule
LGTH	Longueur	VLC	Tableau électrique central du véhicule
LT	Chenille longue	WHOLE GOODS	Marchandises complètes
MAKE FROM, MF	À confectionner à partir de	WT	Chenilles larges
MARKED	Marqué	XLT	Chenille extra longue
MATCHED SET	Jeu apparié		

Excavadora compacta 50D

TX1074198A A.1



(Excavadora compacta 50D)

(NS 275000-)

(Fabricación 2009-2012)

(Las especificaciones y el diseño están sujetos a cambios sin previo aviso)

Para el cliente

Los números de pieza en este catálogo de piezas eran correctos al momento de la publicación del catálogo. Es nuestra política mejorar continuamente nuestras máquinas y, por lo tanto, los números de pieza están sujetos a cambios. Al pedir las piezas, consultar al concesionario para verificar los números de pieza.

Unidades de medida SI

Siempre que sea aplicable, en todo este catálogo de piezas las dimensiones se indican en el sistema métrico.

Identificación de resistencia de pernos y tornillos

En este catálogo, los pernos y tornillos que deben tener características de resistencia alta equivalentes al grado 8 de SAE se identifican con la descripción HS SAE 8 (valor de sistema métrico 10.9). Todos los pernos y tornillos estándar son de grado 5 SAE (valor de sistema métrico 8.8) o inferior.

Información de lista de número de serie

La información de número de serie se lista para indicar la máquina en la cual se puede usar la pieza; por ejemplo:

- **La pieza puede usarse en todos los productos.**
- 000000** - **La pieza puede usarse en los productos a partir del número de serie listado.**
- **000000** **La pieza puede usarse en los productos hasta e inclusive el número de serie listado.**
- 000000** - **000000** **La pieza puede usarse en los productos entre e inclusive el número de serie listado.**

Cuando aparece XXXXXX en vez de un número de serie, se modificó el número de serie, pero el número de serie preciso no se tenía disponible en el momento de producción del catálogo.

Si se requieren números de identificación de producto o números de serie para reclamaciones de garantía o la correspondencia acerca de este producto, es muy importante suministrar todos los caracteres. No es posible sobreenfatizar este punto.

Flecha de sentido

Las flechas se emplean en las ilustraciones para indicar la parte delantera de la unidad. Los lados "derecho" e "izquierdo" se determinan mirando en el sentido de avance de la máquina.

Ilustraciones encerradas en cuadros

Al cuadro que encierra todas las piezas vendidas como un conjunto, se asigna un número de referencia que se emplea en la lista de piezas. Un cuadro sin número de referencia incluye piezas no actuales.

Listas de mercancía completa

La mercancía completa se detalla en negrita. Pedir por separado. No incluir en el pedido de piezas de repuesto.

Orientación del motor

Los lados derecho e izquierdo se determinan al pararse junto al volante del motor y mirar hacia el motor.

Componentes John Deere Reman

Las piezas de repuesto listadas en este catálogo son para la reparación del equipo original. A pesar de que la mayoría de las piezas de repuesto puedan servir para reparar los componentes reconstruidos, en el proceso de reconstrucción se puede modificar los componentes de modo que las piezas de repuesto no sean adecuadas para usar.

Dientes de cucharón

Se pueden hallar repuestos adicionales para el cucharón en el catálogo de componentes del cucharón. Dientes de cucharón PC 9555

Ubicación del número de serie

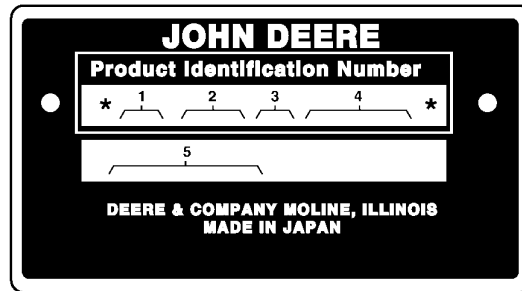
Cada excavadora 50D tiene siete chapas con números de serie: Una chapa de identificación del producto, una en el motor, una en la bomba hidráulica, una en el motor de propulsión izquierdo, una en el motor de propulsión derecho, una en el motor de giro y una en la válvula de control.

- La chapa de identificación del producto se encuentra en la parte delantera de la estructura superior, a la derecha de la cabina.
- La chapa del número de serie del motor se encuentra sobre la tapa de la culata.
- La chapa del número de serie de la bomba hidráulica está ubicada cerca de la parte delantera de la bomba hidráulica.
- La chapa del número de serie del motor de giro se encuentra en la parte superior del motor.
- La chapa del número de serie del motor de propulsión derecho se encuentra en el lado izquierdo de dicho motor.
- La chapa del número de serie del motor de propulsión izquierdo se encuentra en el lado derecho de dicho motor.
- La chapa del número de serie de la válvula de control está ubicada en la parte superior izquierda de la válvula de control.

Es posible que sea necesario especificar los números de identificación del producto o los números de serie al presentar una reclamación por garantía o en la correspondencia relacionada con este producto. En esos casos es muy importante que se suministren todos los caracteres. Resulta indispensable recalcar la importancia de este punto.

Número de identificación de producto

TX1074185 A.1

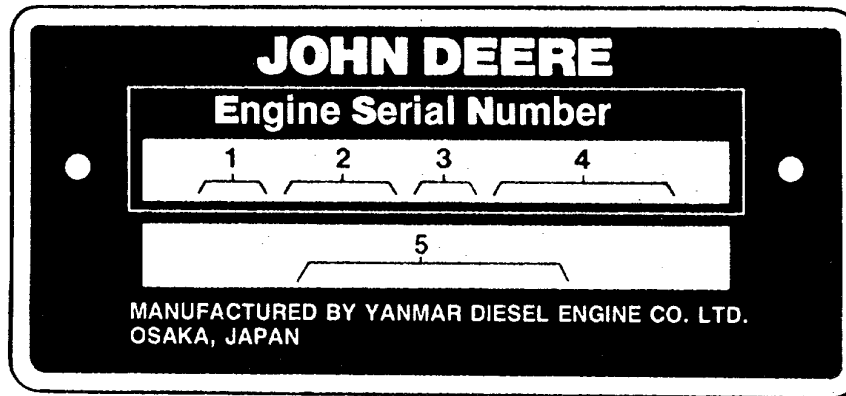


TX1074185

Primer renglón	Designa
FF	Fabricante — John Deere
50	Modelo
DX	Configuración
012345	Número de serie (ejemplo)
Segundo renglón	Designa
EXCAVADORA	Tipo de unidad

Número de serie del motor

TX1074189 A.1



TX1074189

Primer renglón	Designa
CH	Fabricante — Yanmar, Japón
3	Cilindros
D — Diesel	Tipo de combustible o condiciones especiales
123456	Número de serie (ejemplo)
Segundo renglón	Designa
4TN78T	Modelo — Número

Marcas comerciales

En este catálogo de piezas pueden aparecer las siguientes marcas comerciales de Deere and Company:

Best Bid™	CounterParts™	DEERE™ (Deere™)
Dura-Trax™	Fanggs™	Guardian™
HTH™	Jagz™	JDLink™
MARKS™	MIC™ [Centro de información de máquina]	MTH™
Power Curve™	Powerllel™	PowerShift Plus™
Powerwize™	POWR SAVR™	Powrshift™
ProPath™	Quad-Cool™	Quik-Tatch™
SC-2™	Side-Tracker™	Stinger™
StructureALL™	Swamper™	TMC™ [Control total de la máquina]
ValueSelect™	Waratah™	Worksite Pro™
FlexBox™	Funk™	iTorque™
Phoenix™	Phoenix International™	PowerTech™
PowerTech™ E	PowerTech™ M	PowerTech™ Plus
Precision Joint™	SHIFT-O-MATIC™	SWEDA™ (Eje doble extremo súper ancho)
TeamMate™	TeamMate™II	TeamMate™ IV
TMII™	TMIII™	

Comentarios y abreviaturas

Los siguientes comentarios y abreviaturas pueden aparecer en este catálogo de piezas. Consultar las traducciones en la siguiente tabla.

Frase	Significado	Frase	Significado
ALSO ORDER, ORD W/	Pedir también	Tracción delantera (TDM)	Tracción delantera mecánica
AMP	Amperio	NA, NOT USED THIS APPL	ND, No se usa para esta aplicación
APPL, APPL ONLY	Solo esta aplicación	NLA	Ya no está disponible
Según se requiera	Según sea necesario	NSEP	No disponible por separado
ASSY	Conjunto completo	DE	Diámetro exterior
BOAC	Borde cortante atornillado	OPCIONAL	Opcional
CCW	Hacia la izquierda	OR	Or
COMPLETO	Completo	ORD, ORDER	Pedido
MERCANCÍA COMPLETA	Mercancía completa	OS	Sobredimensión
CONVENIENCE ASSY, CA	Conjunto de comodidad	OUTER	Exterior
CTL, CUT TO LENGTH	Corte a medida	PKG, PACKG	Paquete, paquete de
CW	Hacia la derecha	TDF	Toma de fuerza
MOTOR	Motor	RATIO	Tasa
FOR	para	PARTE TRASERA	Trasero
PARTE DELANTERA	Frontal	REMAN	Remanufacturados
GAS	Gasolina	REPL	Reemplaza a
TDH	Tracción delantera hidráulica	RH	Derecho
Potencia	Potencia	SN	Número de serie
HS, HEAD MARKED	Alta resistencia, cabeza marcada	STD	Puntal de arado
ID	Perímetro interior	SUB	Sustituido por
IN	Pulgada	SUB COMPONENTS	Sustituir componentes (del juego o conjunto)
INCL KEYS	Incluye los elementos...	SUB FOR	Sustituir por
INCL, INCLUDES	Incluye...	TEETH, Z	Número de dientes de engranaje
INCLUDES PARTS/ ITEMS MARKED	Incluye las piezas/elementos marcados...	TK	Espesor
INNER	Interior	UP, UPPER	Superior
KIT	Juego	EE. UU.	Subtamaño
L	Número de eslabones	USE UNTIL EXHAUSTED	Usar hasta que se acabe
LF, LINE FILL	Llenado de tubería	USE WITH	Usar con
LGP	Baja presión sobre el suelo	VEC	Unidad de control electrónico del vehículo
LGTH	Longitud	VLC	Centro de carga del vehículo
LT	Oruga larga	WHOLE GOODS	Mercancías completas
MAKE FROM, MF	Fabricar de	WT	Orugas anchas
MARKED	Marcado	XLT	Oruga extra larga
MATCHED SET	Conjunto combinado		

Table of Contents

01 Wheels & Tires & Tracks	
0110 Powered Wheels, Tires & Fastenings	42
0130 Track Systems	44
02 Axles, Differentials & Suspension Systems	
0260 Axles, Diff. & Susp. Sys. Hyd. (Incl. Fwd)	80
04 Engine	
0400 ENGINE	94
05 Engine Auxiliary System	
0505 Cold Weather Starting Aids	130
0510 Engine Cooling Systems	132
0515 Engine Speed Control	138
0520 Intake System	140
0530 External Exhaust Systems	142
0540 Engine Mounting	144
0560 External Fuel Supply Systems	146
13 Miscellaneous Vehicle	
1320 Vehicle Finish & Trim	150
16 Vehicle Electrical Systems	
1674 Wiring Harness & Switches	158
17 Frame Chassis Or Supporting Structure	
1740 Frame Installation	168
18 Operator's Station	
1810 Operator Enclosure	178
1811 ROPS, FOPS, OPS, Or Body Frame	218
1821 Seat And Seat Belts	232
1830 Heating & Air Conditioning	246
19 Sheet Metal & Styling	
1910 Hood Or Engine Enclosure	264
20 Safety, Convenience & Miscellaneous	
2001 Radio	286
21 Vehicle Main Hydraulic System	
2161 Hydraulic Pumps & Drives	288
2163 Hydraulic Lines & Hoses	290
2164 Hydraulic Reservoir, Filter & Cooler	292
33 Excavator	
3301 Blades & Side Cutters	298
3302 Bucket With Teeth	312
3315 Controls Linkage	344
3340 Backhoe & Excavator Frames	374
3344 Boom	382
3345 Bucket Linkage	386
3362 Control & Load Holding Valves	390
3363 Lines, Hoses & Fittings	428
3365 Hydraulic Cylinders	472
43 Swing, Rotation Or Pivoting System	
4360 Hydraulics	504

Alphabetical Index

	Page		Page
A			
ACTUATOR, ENGINE SPEED CONTROL	138	Auxiliary Section Control Valve (Power Angle Blade).....	414
Actuator, ENGINE SPEED CONTROL LINKAGE	138	B	
Adapter Kit, Hammer	342	BAR, GRAB, RIGHT SIDE OF UNIT	222
Adapter, TF Tooth, Heavy Duty Bucket (12", 2.1 Cu Ft)	312	Bar, Quick Coupler	388
Adapter, TF Tooth, Heavy Duty Bucket (18", 3.6 Cu Ft)	320	Bar, Rear Cover	266
Adapter, TF Tooth, Heavy Duty Bucket (24", 5.2 Cu Ft)	324	Bar, Triple Bar Shoe, Track Chain Assembly, Rubber Pad Shoe (275775 -)	64
Adapter, TF Tooth, Heavy Duty Bucket (30", 6.8 Cu Ft)	328	BARREL, BUCKET CLAMP CYLINDER	500
Adapter, TK Tooth, Heavy Duty Bucket (12", 2.1 Cu Ft)	316	BASE, SEAT	216
Adapter, TK Tooth, Heavy Duty Bucket (18", 3.6 Cu Ft)	322	BATTERY	162
Adapter, TK Tooth, Heavy Duty Bucket (24", 5.2 Cu Ft)	326	BATTERY CABLES	162
Adapter, TK Tooth, Heavy Duty Bucket (30", 6.8 Cu Ft)	330	Battery Compartment	162
Adapter, TK Tooth, Heavy Duty Bucket (36", 8.3 Cu Ft)	332	BATTERY COMPARTMENT AND CABLES	162
Adapter, TK225 Series Tooth System	336	BATTERY COVER	162
Additional Counterweight	174	Battery, Battery Cable, Battery Compartment	162
Adjuster, Rubber Track (SN -275360) (- 275360)	70	Battery, Dry Charged Battery, Battery Compartment	162
Adjuster, Rubber Track (SN 275361-) (275361 -)	72	BEARING KIT, CYLINDER BLOCK	96
Adjuster, Steel Track	74	BEARING, CAMSHAFT	108
Adjuster, Steel Track (SN 275361-) (275361 -)	76	Bearing, Swing	504
Air Cleaner (Standard)	140	BEARINGS, MAIN	96
Air Conditioner	246	BELT, AIR COMPRESSOR PULLEY	258
AIR CONDITIONER	258	BELT, ENGINE FAN	114
Air Conditioner Components	248	Belt, Rubber Track Belt, Rubber Tracks	44
Air Conditioner Compressor	258	BELT, SEAT	232
Air Conditioner Condenser (- 275163)	254	Belt, Seat Belt, Retractable Seat Belt (Suspension Seat) (275134 -)	244
Air Conditioner Condenser (275164 -)	256	Belt, Seat Belt, Retractable Seat Belt 76mm (3 in.)	242
AIR CONDITIONER CONTROLLER	246	Belt, Seat Belt, Seat Belt	232
Air Conditioner Duct	262	Belt, Seat Belt, Suspension Cloth Seat (Cab) (- 275123)	238
Air Conditioner Duct and Cover	262	Belt, Seat Belt, Suspension Cloth Seat (Cab) (275124 -)	240
Air Conditioner Duct Interior Cover	262	Belt, Seat, Retractable (76 mm) (3 in.) Wide	242
Air Conditioner Isolators And Support	252	Bezel, Canopy	220
Air Conditioner Lines	250	Bezel, Machine Wiring Harness	160
Air Conditioner Receiver-Dryer (- 275163)	254	Blade	298
Air Conditioner Receiver-Dryer (275164 -)	256	Blade (With Bolt-On Cutting Edge)	310
AIR CONDITIONER RELAYS	246	BLADE ANGLE AUXILIARY SPOOL SECTION, MAIN CONTROL VALVE	414
Air Conditioner Solenoid and Lines	260	BLADE ANGLE CYLINDER	308
AIR CONDITIONER SOLENOID HOSES	260	BLADE ANGLE CYLINDER COMPONENTS	484
AIR CONDITIONER SYSTEM	246	BLADE ANGLE CYLINDER GUARD	302
AIR CONDITIONER WIRING HARNESS	248	Blade Angle Hydraulic Cylinder	308
AIR CONDITIONER, WIRING HARNESS	246	Blade Angle Hydraulic Cylinder Components	484
AIR DUCT, AIR CONDITIONING UNIT	246	BLADE ANGLE RELIEF VALVES	416
AIR FILTER, AIR CONDITIONER	248	BLADE ANGLE SPOOL SECTION, MAIN CONTROL VALVE	412
Air Restriction Indicator, Air Cleaner	140	BLADE BUSHINGS	298
ALARM, CAB MONITOR, TRAVEL	166	BLADE CONTROL LEVER AND HOSES	346
Alarm, Travel	160	Blade Control Lever and Lines	346
Alternator	126	Blade Cylinder Components (- 275344)	494
ALTERNATOR FAN BELT	114	Blade Cylinder Components (275344 - 275860)	496
ALTERNATOR MOUNTING	126	Blade Cylinder Components (275361 -)	498
Alternator, Alternator	126	Blade Cylinder Guard (Power Angle Blade)	306
ANGLE BLADE	302	Blade Cylinder Mounting	300
ANGLE BLADE FRAME	304	Blade Cylinders Hydraulic Lines (Power Angle Blade)	458
ANTENNA	204	BLADE DECALS (POWER ANGLE BLADE)	156
Antenna, Cab Hardware	204	BLADE GREASE FITTING, BLADE W/ BOLT-ON CUTTING EDGE	310
Antenna, Wiring Harness	204	BLADE LEVER (POWER ANGLE BLADE)	366
Arm Bushings, Pins, Bucket Link and Bucket Cylinder Lines	376	Blade Mounting	300
Arm Bushings, Pins, Bucket Link and Bucket Cylinder Lines (Long Arm)	380	BLADE PILOT CONTROL LEVER	346
Arm Cylinder Components (- 275292)	490	BLADE PILOT CONTROL VALVE	346
Arm Cylinder Components (275293 -)	492	Blade Pilot Control Valve Components	368
Arm Section (Control Valve)	402	Blade Pilot Lines (Power Angle Blade)	460
ARM, LONG (1.69M)	378	BLADE PILOT VALVE TO CONTROL VALVE HOSE	346
Arm, Long Arm 1.69m	378	Blade Section (Control Valve)	400
ARM, PINS AND BUCKET CYLINDER HOSES(STAN STANDARD)	376	Blade Support	300
ARM, ROCKER	102	Blade, Blade	298
Arm, Rocker Arm Shaft, Cylinder Head, Rocker Arms, and Valves	102	Blade, Blade (With Bolt-On Cutting Edge)	310
Arm, Rocker Arm, Cylinder Head, Rocker Arms, and Valves	102	Blade, Blade Cylinder Components (275361 -)	498
ARM, STANDARD (1.38M)	374	Blade, Blade Support	300
Arm, Standard Arm 1.38m	374	BLADE, POWER ANGLE	302
Arm, Wiper Arm, Cab Front Window	200	Blade, Power Angle Blade	302
Armature, Starter	124	BLADE, POWER ANGLE; FRAME	304
ARMREST, CONSOLE	186	Blade, Wiper Blade, Cab Front Window	200
Armrest, Console Wrist Rest	186	Block Heater, Engine	130
Ashtray, Cab	192	BLOCK, CYLINDER, KIT, SWING MOTOR	512
ASHTRAY, CAB	192	BLOCK, ENGINE CYLINDER	96
ATTACHMENT PEDAL HOSE AND FITTINGS	364	Blower, Blower Fan, Air Conditioner Components	248
Auto Idle Switch	164	Blower, Fan, Water Pump	114
Auxiliary Function Cab Control Levers	362	BOLT-ON CUTTING EDGE, BLADE	310
Auxiliary Function Cab Control Levers Solenoid Valve	362		
Auxiliary Function Cab Control Levers Wiring Harness	362		
Auxiliary Pilot Control Valve Components	368		
Auxiliary Section (Control Valve)	406		

Alphabetical Index - Continued

Page	Page
BONNET, ENGINE CYLINDER HEAD	102
Boom	382
BOOM BUSHINGS	382
Boom Cylinder (Cab) (- 275296)	480
Boom Cylinder (Canopy) (- 275367)	476
Boom Cylinder (Canopy) (275368 -)	478
Boom Cylinder Components, Cab (275297 -)	482
Boom Hose Protectors	448
Boom Light	160
BOOM LINE HOSE PROTECTORS	448
Boom Lines and Fittings (Upper)	432
Boom Lines To Arm	442
BOOM PINS	384
Boom Pins and Bushings	384
BOOM SPOOL SECTION, MAIN CONTROL VALVE	426
Boom Swing Cylinder (- 275356)	472
Boom Swing Cylinder (275357 -)	474
BOOM SWING CYLINDER LINES	470
BOOM SWING SPOOL SECTION, MAIN CONTROL VALVE	424
Boom Wiring Harness	160
BOOM, SWING POST	170
BOOT, LEFT-HAND CONTROL LEVER	358
BRACKET (WITHOUT RADIO)	214
BRACKET ENGINE SPEED CONTROL LEVER	138
BRACKET, BLADE CONTROL LEVER	346
BRACKET, CAB MONITOR	166
BRACKET, CAB TILT ASSEMBLY	178
BRACKET, CANOPY INTERIOR SUPPORT	218
BRACKET, CONSOLE WIRING HARNESS	164
BRACKET, COVER (WITHOUT AIR CONDITIONER)	190
BRACKET, ENGINE MOUNT	144
BRACKET, ENGINE MOUNTING	136
BRACKET, FLOOR ASSEMBLY	180
BRACKET, FLOOR PARTS (CAB)	184
BRACKET, FOOT REST (CAB)	188
BRACKET, FOOT REST (CANOPY)	226
BRACKET, FUEL TANK WATER SEPARATOR	148
BRACKET, MAIN FRAME	172
BRACKET, MUFFLER	142
BRACKET, PATTERN CHANGER	444
BRACKET, PILOT CONTROLLER LINES	438
BRACKET, RADIATOR	132
BRACKET, RADIATOR FAN GUARD	136
BRACKET, REAR CAB ISOLATORS	278
BRACKET, REAR COVER	266
BRACKET, ROCKER ARM SHAFT	102
BRACKET, SEAT BASE	216
BRACKET, SECONDARY EXIT KIT	212
BRACKET, SIDE COVERS (1)	268
BRACKET, SIDE COVERS (2)	270
BRACKET, SWING BOOM CYLINDER COVER	280
BRACKET, SWING PEDAL (CAB)	354
BRACKET, SWING PEDAL (CANOPY)	352
BRACKET, TOOLBOX	264
BRACKET, TRAVEL CONTROLS (CAB)	350
Bucket Clamp	340
BUCKET CLAMP	338
Bucket Clamp Cylinder Components	502
BUCKET CLAMP CYLINDER COMPONENTS	500
Bucket Cylinder Components (- 275287)	486
Bucket Cylinder Components (275288 -)	488
BUCKET CYLINDER, LONG ARM	380
BUCKET CYLINDER, STANDARD ARM	376
Bucket Link	386
Bucket Section (Control Valve)	404
Bucket Tooth System, TK225 Series	336
Bucket with TF Teeth, Heavy Duty (12", 2.1 Cu Ft)	312
Bucket with TK Teeth, Heavy Duty (12", 2.1 Cu Ft)	316
Bucket with TK Teeth, Heavy Duty (18", 3.6 Cu Ft)	322
Bucket, Bucket Tooth Adapter, Heavy-Duty Bucket with TF Teeth, 30.48 cm (12 in), 0.059 m ³ (2.1 ft ³)	312
Bucket, Bucket Tooth Adapter, Heavy-Duty Bucket with TF Teeth, 45.72 cm (18 in), 0.102 m ³ (3.6 ft ³)	320
Bucket, Bucket Tooth Adapter, Heavy-Duty Bucket with TF Teeth, 60.96 cm (24 in) 0.147 m ³ (5.2 ft ³)	324
Bucket, Bucket Tooth Adapter, Heavy-Duty Bucket with TF Teeth, 76.2 cm (30 in), 0.192 m ³ (6.8 ft ³)	328
Bucket, Bucket Tooth Adapter, Heavy-Duty Bucket with TK Teeth, 30.48 cm (12 in), 0.059 m ³ (2.1 ft ³)	316
Bucket, Bucket Tooth Adapter, Heavy-Duty Bucket with TK Teeth, 45.72 cm (18 in), 0.102 m ³ (3.6 ft ³)	322
Bucket, Bucket Tooth Adapter, Heavy-Duty Bucket with TK Teeth, 60.96 cm (24 in), 0.147 m ³ (5.2 ft ³)	326
Bucket, Bucket Tooth Adapter, Heavy-Duty Bucket with TK Teeth, 76.2 cm (30 in), 0.192 m ³ (6.8 ft ³)	330
Bucket, Bucket Tooth Adapter, Heavy-Duty Bucket with TK Teeth, 91.44 cm (36 in), 0.235 m ³ (8.3 ft ³)	332
Bucket, Bucket Tooth Adapter, TK225 Series Bucket Tooth System	336
BUCKET, DITCH CLEANING (36", 8.3 CU FT)	334
Bucket, Excavator Bucket, Ditch Cleaning Bucket, 91.44 cm (36 in), 0.235 m ³ (8.3 ft ³)	334
Bucket, Excavator Bucket, Heavy-Duty Bucket with TF Teeth, 30.48 cm (12 in), 0.059 m ³ (2.1 ft ³)	312
Bucket, Excavator Bucket, Heavy-Duty Bucket with TF Teeth, 45.72 cm (18 in), 0.102 m ³ (3.6 ft ³)	320
Bucket, Excavator Bucket, Heavy-Duty Bucket with TF Teeth, 60.96 cm (24 in) 0.147 m ³ (5.2 ft ³)	324
Bucket, Excavator Bucket, Heavy-Duty Bucket with TF Teeth, 76.2 cm (30 in), 0.192 m ³ (6.8 ft ³)	328
Bucket, Excavator Bucket, Heavy-Duty Bucket with TK Teeth, 30.48 cm (12 in), 0.059 m ³ (2.1 ft ³)	316
Bucket, Excavator Bucket, Heavy-Duty Bucket with TK Teeth, 45.72 cm (18 in), 0.102 m ³ (3.6 ft ³)	322
Bucket, Excavator Bucket, Heavy-Duty Bucket with TK Teeth, 60.96 cm (24 in), 0.147 m ³ (5.2 ft ³)	326
Bucket, Excavator Bucket, Heavy-Duty Bucket with TK Teeth, 76.2 cm (30 in), 0.192 m ³ (6.8 ft ³)	330
Bucket, Excavator Bucket, Heavy-Duty Bucket with TK Teeth, 91.44 cm (36 in), 0.235 m ³ (8.3 ft ³)	332
Bucket, Heavy Duty With TF Teeth (18", 3.6 Cu Ft)	320
Bucket, Heavy Duty with TF Teeth (24", 5.2 Cu Ft)	324
Bucket, Heavy Duty with TF Teeth (30", 6.8 Cu Ft)	328
Bucket, Heavy Duty with TK Teeth (24", 5.2 Cu Ft)	326
Bucket, Heavy Duty with TK Teeth (30", 6.8 Cu Ft)	330
Bucket, Heavy Duty with TK Teeth (36", 8.3 Cu Ft)	332
Bulb, Boom Light	160
Bulb, Cab Hardware	204
Bulb, Canopy	220
Bulb, Machine Wiring Harness	160
Bumper, Fuel Injection Pump	116
Bumper, Secondary Exit (Fixed Rear Window)	212
BUMPER, SECONDARY EXIT KIT	212
BUSHING, BLADE	298
Bushing, Boom (Upper)	432
Bushing, Front Idler (SN -275360) (- 275360)	50
Bushing, Front Idler (SN 275361-) (275361 -)	52
BUSHING, LONG ARM (1.69M)	378
BUSHING, MAIN FRAME	172
BUSHING, REAR COVER	266
BUSHING, SIDE COVERS (1)	268
BUSHING, STANDARD ARM (1.38M)	374
BUSHINGS, BOOM	382
BUZZER, CAB MONITOR	166
C	
Cab	192
Cab (Without Radio)	214
Cab Boom Cylinder (275297 -)	482
Cab Boom Cylinder (SN -275296) (- 275296)	480
CAB COMPONENTS (FRONT WINDOW)	200
Cab Control Levers (Auxiliary Function)	362
Cab Door	198
Cab Door Hinge Area Seal	198
CAB DOOR WEATHER STRIP	206
CAB FLOOR HARDWARE	180
CAB FLOOR MAT	196
Cab Floor Mounts	182
Cab Floor Parts	184
Cab Floor Plate Hardware	180
CAB FOOT REST	188
Cab Footrest	188
CAB FRONT LOWER WINDOW	208
Cab Front Window	200
Cab Hardware	204
CAB HEADLINER	206
Cab Inside Right Cover	190
CAB INTERIOR COVERS	192
CAB INTERIOR LATCH	210
CAB INTERIOR RIGHT COVER	190
CAB ISOLATORS, REAR	278
Cab Levers	210
CAB LIGHT, FRONT	204
Cab Middle Door Seal	198
Cab Mirror	194

Alphabetical Index - Continued

Page	Page		
Cab Monitor.....	166	Clutch, Starter.....	124
CAB MONITOR BRACKET.....	166	COLLAR, SWING BOOM POST.....	170
CAB MONITOR COVER.....	166	COLLAR, SWING PEDAL (CAB).....	354
Cab Right Side Window.....	202	COMPARTMENT, BATTERY.....	162
CAB SUSPENSION CLOTH SEAT (- 275123).....	238	Compressor, AC Compressor WRG Harness, Air Conditioner Components.....	248
Cab Suspension Cloth Seat (275124 -).....	240	COMPRESSOR, AIR CONDITIONER.....	258
CAB SWING PEDAL.....	354	Compressor, Air Conditioner Compressor.....	258
Cab Tilt Assembly.....	178	Condenser, Air Conditioner (- 275163).....	254
CAB TILT HINGE.....	182	Condenser, Air Conditioner (275164 -).....	256
Cab Tilt Switch.....	164	Condenser, Vapor Condenser, Air Conditioner Condenser (- 275163).....	254
CAB TRAVEL CONTROLS.....	350	Condenser, Vapor Condenser, Air Conditioner Condenser (275164 -).....	256
Cab Windows.....	206	Conduit, Fuel Tank Lines.....	148
CAB, COVER,(WITHOUT RADIO).....	214	CONNECTING ROD BEARINGS.....	110
Cable, Battery Cable, Battery Compartment.....	162	CONNECTING RODS.....	110
Cable, Battery Compartment.....	162	CONNECTOR, CAB.....	204
Cable, Cab Levers.....	210	Console (LH).....	358
CABLE, ENGINE SPEED CONTROL.....	138	CONSOLE COVER, RIGHT.....	356
CABLES, BATTERY.....	162	Console Wiring Harness.....	164
Cam, Cam Follower, Camshaft and Drive Gears.....	108	Console Wrist Rest.....	186
Cam, Pilot Control Valve.....	368	CONSOLE, ENGINE CONTROL.....	158
Cam, Swing Motor Pilot Valve Components.....	360	Container Tank, Hydraulic Reservoir, Hydraulic Oil Reservoir.....	294
Cam, Travel Pilot Control Valve Components.....	370	Container Tank, Hydraulic Reservoir, Hydraulic Reservoir Installation.....	292
CAMSHAFT.....	108	Container Tank, Reservoir, Flywheel Housing and Oil Pan.....	100
Camshaft and Drive Gears.....	108	CONTROL CABLE AND LEVER, ENGINE SPEED.....	138
Camshaft, Camshaft and Drive Gears.....	108	CONTROL CONSOLE, ENGINE.....	158
Canopy.....	220	Control Lever, Auxiliary Function.....	362
Canopy Boom Cylinder (SN -275367) (- 275367).....	476	CONTROL LEVER, LEFT-HAND.....	358
CANOPY COVERS, LOWER.....	230	Control Unit ECU, Air Heater Controller, Air Conditioner.....	246
Canopy Floor Mat.....	228	Control Unit ECU, Engine Controller, Engine Control Console.....	158
Canopy Floor Plate.....	224	Control Unit ECU, Vehicle Controller, Console Wiring Harness.....	164
CANOPY FLOOR PLATES.....	224	CONTROL VALVE.....	390
CANOPY FOOT REST.....	226	CONTROL VALVE (PILOT LINES).....	466
Canopy Footrest.....	226	CONTROL VALVE (POWER ANGLE BLADE).....	410
CANOPY HEADLIGHT.....	220	CONTROL VALVE (SOLENOID VALVE COMPONENTS)(TWO-WAY).....	422
CANOPY HEADLIGHT WIRING HARNESS.....	220	CONTROL VALVE HOSE FOR BLADE.....	344
CANOPY INTERIOR SUPPORT.....	218	Control Valve Hydraulic Lines (1) (Power Angle Blade).....	450
Canopy Overhead Panel Components.....	218	Control Valve Hydraulic Lines (2) (Power Angle Blade).....	452
CANOPY SUSPENSION VINYL SEAT.....	236	Control Valve Lines.....	434
CANOPY SWING PEDAL.....	352	Control Valve Lines (Attachment Pedal).....	364
CANOPY TRAVEL CONTROLS.....	348	Control Valve Lines (Blade).....	344
Canopy, Boom Cylinder (275368 -).....	478	Control Valve Lines (Boom Swing).....	430, 440
Canopy, Canopy.....	220	Control Valve Lines (Pump & Filter).....	436
CANOPY, RADIATOR FAN GUARD.....	136	Control Valve Lines (Travel).....	428
CAP, COUNTERWEIGHT (ADDITIONAL).....	174	CONTROL VALVE LINES TO PUMP AND FILTER.....	436
CAP, OIL FILL; TIMING GEAR COVER.....	98	CONTROL VALVE LINES TO ROTARY MANIFOLD.....	434
CAP, OIL FILL; VALVE COVER.....	102	Control Valve Lines To Selector Valve.....	446
Cap, Radiator.....	132	CONTROL VALVE LINES TO SWING BOOM CYLINDER.....	434
Case, Air Conditioner Components.....	248	CONTROL VALVE LINES TO SWING MOTOR.....	434
Case, Flywheel Housing and Oil Pan.....	100	Control Valve Lines To Travel Controller.....	372
Case, Gear Case, Starter.....	124	CONTROL VALVE PILOT LINES.....	468
Case, Gear Case, Timing Gear Cover.....	98	Control Valve Section (Boom Swing).....	424
Case, Gear Case, Travel Motor Components (3 of 4).....	90	Control Valve Section (Boom).....	426
Case, Pilot Control Valve.....	368	CONTROL VALVE TO BLADE PILOT VALVE HOSE.....	346
Case, Solenoid Valve.....	422	CONTROL VALVE, ARM SPOOL SECTION.....	402
Case, Swing Motor Components.....	512	CONTROL VALVE, AUXILIARY SPOOL SECTION.....	406
Case, Swing Motor Pilot Valve Components.....	360	CONTROL VALVE, AUXILIARY SPOOL SECTION (POWER ANGLE BLADE).....	414
CASE, TIMING GEAR.....	98	CONTROL VALVE, BLADE SPOOL SECTION.....	400
Case, Travel Pilot Control Valve Components.....	370	CONTROL VALVE, BOOM SPOOL SECTION.....	426
CENTER JOINT.....	510	CONTROL VALVE, BOOM SWING SPOOL SECTION.....	424
CENTER JOINT (POWER ANGLE BLADE).....	508	CONTROL VALVE, BUCKET SPOOL SECTION.....	404
CHAIN, RUBBER PAD SHOE TRACK (- 275774).....	62	CONTROL VALVE, INLET SECTION.....	392
CHAIN, RUBBER PAD SHOE TRACK (275775 -).....	64	CONTROL VALVE, MID-INLET SECTION.....	394
Chain, Track Chain W/O Shoes, Track Chain Assembly (- 275360).....	58	CONTROL VALVE, POWER ANGLE BLADE SPOOL SECTION.....	412
Chain, Track Chain W/O Shoes, TRACK CHAIN ASSEMBLY, RUBBER PAD SHOE (- 275774).....	62	CONTROL VALVE, RELIEF VALVES (POWER ANGLE BLADE).....	416
CHECK VALVE, ARM SPOOL SECTION.....	402	CONTROL VALVE, SWING SPOOL SECTION.....	396
CHECK VALVE, AUXILIARY SPOOL SECTION.....	406	CONTROL VALVE, TRAVEL SPOOL SECTION.....	398
CHECK VALVE, AUXILIARY SPOOL SECTION (POWER ANGLE BLADE).....	414	CONTROLLER, AIR CONDITIONER.....	246
CHECK VALVE, BLADE SPOOL SECTION.....	400	Controller, Air Heater Controller, Air Conditioner.....	246
CHECK VALVE, BOOM SPOOL SECTION.....	426	CONTROLLER, ENGINE.....	158
CHECK VALVE, BOOM SWING SPOOL SECTION.....	424	Controller, Engine Controller, Engine Control Console.....	158
CHECK VALVE, BUCKET SPOOL SECTION.....	404	Controller, Travel Alarm.....	164
CHECK VALVE, POWER ANGLE BLADE SPOOL SECTION.....	412	Controller, Vehicle Controller, Console Wiring Harness.....	164
CHECK VALVE, SWING MOTOR.....	512	Coolant Heater, Engine.....	130
CHECK VALVE, SWING SPOOL SECTION.....	396	COOLANT LINES, FUEL INJECTION PUMP.....	114
CLAMP CYLINDER, BUCKET, COMPONENTS.....	500	COOLANT OUTLET PIPE, ENGINE.....	114
Clamp, Bucket.....	340	COOLANT PUMP.....	114
CLAMP, BUCKET.....	338	Cooler Hose, Air Conditioner (- 275163).....	254
CLAMP, BUCKET; CYLINDER COMPONENTS.....	500		
Clamp, Hydraulic Bucket.....	340		
CLAMP, HYDRAULIC BUCKET.....	338		
Cloth Seat.....	234		

Alphabetical Index - Continued

Page	Page
Cooler Hose, Air Conditioner (275164 -)	256
COOLER, OIL	132
Cooler, Oil Cooler, Radiator	132
COOLING FAN, ENGINE	114
CORE, EVAPORATOR, AIR CONDITIONER	248
Counterweight	168
COUNTERWEIGHT (ADDITIONAL)	174
COUNTERWEIGHT (STANDARD)	168
COUNTERWEIGHT (STANDARD) MOUNTING HARDWARE	168
Counterweight, Additional Counterweight	174
Counterweight, Counterweight	168
Coupler, Hammer Adapter Kit	342
COUPLER, QUICK	388
Coupling, Engine Mounts	144
Coupling, Main Hydraulic Pump Components	288
COVER (WITHOUT AIR CONDITIONER)	190
COVER HINGE, REAR	284
COVER ISOLATORS, INTERIOR	274
COVER WEATHER STRIPPING	272
COVER, (WITHOUT RADIO)	214
Cover, Air Conditioner Interior	262
COVER, ALTERNATOR	126
COVER, BATTERY	162
COVER, BLADE ANGLE CYLINDER	302
COVER, BLADE CYLINDER (POWER ANGLE BLADE)	306
Cover, Boom Lines	432
COVER, CAB MONITOR	166
COVER, ENGINE CYLINDER HEAD	102
COVER, ENGINE VALVES	102
COVER, FLOOR PARTS (CAB)	184
COVER, GRAB BAR, RIGHT SIDE OF UNIT	222
COVER, INTERIOR RIGHT	190
COVER, MAIN FRAME	172
COVER, MUFFLER	142
COVER, PUMP (ENGINE MOUNT)	144
COVER, REAR	266
COVER, RIGHT CONSOLE	356
COVER, SEAT BASE	216
COVER, SIDE	276
Cover, Starter	124
COVER, SWING BOOM CYLINDER	280
COVER, SWING BOOM POST	170
COVER, TIMING GEAR	98
COVER, TOOLBOX	264
Covers Track Frame (275361 -)	48
Covers Track Frame (SN -275360) (- 275360)	46
COVERS, CANOPY LOWER	230
Covers, Propel Motor (275361 -)	48
Covers, Propel Motor (SN -275360) (- 275360)	46
COVERS, SIDE (1)	268
COVERS, SIDE (2)	270
Covers, Travel Motor (275361 -)	48
Covers, Travel Motor (SN -275360) (- 275360)	46
Covers, Undercarriage (275361 -)	48
Covers, Undercarriage (SN -275360) (- 275360)	46
CRANKSHAFT	110
CRANKSHAFT SEAL, ENGINE FRONT	98
CRANKSHAFT SEAL, ENGINE REAR	100
Crankshaft, Crankshaft, Pistons, and Flywheel	110
Crankshaft, Pistons, and Flywheel	110
CUP HOLDER	220
CUP HOLDER, CAB	192
Cushion, Air Conditioner	246
Cushion, Air Conditioner Compressor	258
Cushion, Air Conditioner Isolators And Support	252
Cushion, Cab Floor Parts	184
Cushion, Hydraulic Reservoir Installation	292
Cushion, Radiator	132
CUSHION, RADIATOR	132
Cushion, Secondary Exit (Fixed Rear Window)	212
Cushion, Solenoid Valve Lines To Hydraulic Reservoir (Power Angle Blade)	454
Cushion, Travel Motor Hydraulic Lines	82
Cushion, Travel Motor Hydraulic Lines (Power Angle Blade)	84
CUTTING EDGE, BLADE	310
CYLINDER BARREL KIT, MAIN HYDRAULIC PUMP	288
CYLINDER BARREL, BUCKET CLAMP CYLINDER	500
CYLINDER BLOCK KIT, SWING MOTOR	512
CYLINDER BLOCK, ENGINE	96
CYLINDER COMPONENTS, BLADE ANGLE CYLINDER	484
CYLINDER COMPONENTS, BUCKET CLAMP	500
CYLINDER COMPONENTS, THUMB	500
Cylinder Guard (Boom Swing)	280
CYLINDER GUARD, BLADE ANGLE CYLINDER	302
CYLINDER GUARD, BLADE CYLINDER (POWER ANGLE BLADE)	306
CYLINDER HEAD COVER, ENGINE	102
CYLINDER HEAD, ENGINE	102
Cylinder Head, Rocker Arms, and Valves	102
CYLINDER ROD, BUCKET CLAMP CYLINDER	500
Cylinder, Arm, Components (SN -275292) (- 275292)	490
Cylinder, Arm, Components (SN -275292) (275293 -)	492
Cylinder, Blade	300
CYLINDER, BLADE ANGLE	308
CYLINDER, BLADE, COMPONENTS (- 275344)	494
CYLINDER, BLADE, COMPONENTS (275344 - 275860)	496
CYLINDER, BLADE, COMPONENTS (275361 -)	498
CYLINDER, BLADE; HYDRAULIC LINES (POWER ANGLE BLADE)	458
Cylinder, Boom (Cab) (275297 -)	482
Cylinder, Boom (Cab) (SN -275296) (- 275296)	480
Cylinder, Boom (Canopy) (275368 -)	478
Cylinder, Boom (Canopy) (SN -275367) (- 275367)	476
Cylinder, Boom Lines and Fittings (Upper)	432
CYLINDER, BOOM SWING (- 275356)	472
Cylinder, Boom Swing (275357 -)	474
Cylinder, Boom Swing Cylinder (275357 -)	474
Cylinder, Bucket Clamp	340
CYLINDER, BUCKET CLAMP	338
CYLINDER, BUCKET, COMPONENTS (- 275287)	486
CYLINDER, BUCKET, COMPONENTS (275288 -)	488
CYLINDER, BUCKET, LONG ARM	380
CYLINDER, BUCKET, STANDARD ARM	376
Cylinder, Cylinder Block, Engine Block	96
Cylinder, Cylinder Block, Swing Motor Components	512
Cylinder, Cylinder Block, Travel Motor Components (2 of 4)	88
Cylinder, Cylinder Head, Arm Cylinder Components (275293 -)	492
Cylinder, Cylinder Head, Blade Angle Hydraulic Cylinder Components	484
Cylinder, Cylinder Head, Blade Cylinder Components (- 275344)	494
Cylinder, Cylinder Head, Boom Cylinder (Canopy) (275368 -)	478
Cylinder, Cylinder Head, Boom Cylinder Components, Cab (275297 -)	482
Cylinder, Cylinder Head, Boom Swing Cylinder (- 275356)	472
Cylinder, Cylinder Head, Bucket Cylinder Components (275288 -)	488
Cylinder, Cylinder Head, Cylinder Head, Rocker Arms, and Valves	102
Cylinder, Cylinder Kit, Main Hydraulic Pump Components	288
Cylinder, Engine Cylinder Head Gasket, Engine Block	96
Cylinder, Engine Cylinder Head Gasket, Engine Gasket Kit	128
Cylinder, Hydr. Cylinder Rod Guide, Bucket Clamp Cylinder Components	502
Cylinder, Hydr. Cylinder Rod Guide, BUCKET CLAMP CYLINDER COMPONENTS	500
Cylinder, Hydraulic Bucket Clamp	340
Cylinder, Hydraulic Cylinder Barrel, Arm Cylinder Components (- 275292)	490
Cylinder, Hydraulic Cylinder Barrel, Blade Angle Hydraulic Cylinder Components	484
Cylinder, Hydraulic Cylinder Barrel, Blade Cylinder Components (- 275344)	494
Cylinder, Hydraulic Cylinder Barrel, Blade Cylinder Components (275344 - 275860)	496
Cylinder, Hydraulic Cylinder Barrel, Blade Cylinder Components (275361 -)	498
Cylinder, Hydraulic Cylinder Barrel, Boom Cylinder (Canopy) (275368 -)	478
Cylinder, Hydraulic Cylinder Barrel, Boom Cylinder Components, Cab (275297 -)	482
Cylinder, Hydraulic Cylinder Barrel, Boom Swing Cylinder (275357 -)	474
Cylinder, Hydraulic Cylinder Barrel, BUCKET CLAMP CYLINDER COMPONENTS	500
Cylinder, Hydraulic Cylinder Barrel, Bucket Cylinder Components (- 275287)	486
Cylinder, Hydraulic Cylinder Barrel, Bucket Cylinder Components (275288 -)	488
Cylinder, Hydraulic Cylinder Barrel, Bucket Cylinder Components (275344 - 275860)	496
Cylinder, Hydraulic Cylinder Barrel, Bucket Cylinder Components (275361 -)	498
Cylinder, Hydraulic Cylinder Barrel, Boom Cylinder (Canopy) (275368 -)	478
Cylinder, Hydraulic Cylinder Barrel, Boom Cylinder Components, Cab (275297 -)	482
Cylinder, Hydraulic Cylinder Barrel, Boom Swing Cylinder (275357 -)	474
Cylinder, Hydraulic Cylinder Barrel, BUCKET CLAMP CYLINDER COMPONENTS	500
Cylinder, Hydraulic Cylinder Barrel, Bucket Cylinder Components (- 275287)	486
Cylinder, Hydraulic Cylinder Barrel, Bucket Cylinder Components (275288 -)	488
Cylinder, Hydraulic Cylinder Cap, Arm Cylinder Components (- 275292)	490
Cylinder, Hydraulic Cylinder Cap, Blade Angle Hydraulic Cylinder Components	484
Cylinder, Hydraulic Cylinder Cap, Blade Cylinder Components (275344 - 275860)	496
Cylinder, Hydraulic Cylinder Cap, Blade Cylinder Components (275361 -)	498
Cylinder, Hydraulic Cylinder Cap, Boom Cylinder (Cab) (- 275296)	480

Alphabetical Index - Continued

Page	Page		
Cylinder, Hydraulic Cylinder Cap, Boom Cylinder (Canopy) (- 275367).....	476	DIPSTICK, OIL.....	112
Cylinder, Hydraulic Cylinder Cap, Boom Swing Cylinder (275357 -).....	474	Disc, Disk Spring, Swing Motor Components.....	512
Cylinder, Hydraulic Cylinder Cap, Bucket Cylinder Components (- 275287).....	486	Disc, Disk, Swing Motor Components.....	512
Cylinder, Hydraulic Cylinder Kit, Bucket Clamp Cylinder Components.....	502	Disk, Disk Spring, Swing Motor Components.....	512
Cylinder, Hydraulic Cylinder Kit, BUCKET CLAMP CYLINDER COMPONENTS.....	500	Disk, Swing Motor Components.....	512
Cylinder, Hydraulic Cylinder Kit, Travel Motor Components (2 of 4).....	88	Ditch Cleaning Bucket, 91.44 cm (36 in), 0.235 m ³ (8.3 ft ³).....	334
Cylinder, Hydraulic Cylinder Rod, Arm Cylinder Components (- 275292).....	490	DOME LAMP.....	204
Cylinder, Hydraulic Cylinder Rod, Blade Angle Hydraulic Cylinder Components.....	484	Door Seal, Middle, Cab.....	198
Cylinder, Hydraulic Cylinder Rod, Boom Swing Cylinder (275357 -).....	474	DOOR WEATHER STRIP, CAB.....	206
Cylinder, Hydraulic Cylinder Rod, Bucket Cylinder Components (- 275287).....	486	DOOR, CAB.....	198
Cylinder, Hydraulic Cylinder, Arm Bushings, Pins, Bucket Link and Bucket Cylinder Lines.....	376	Door, Cab Door.....	198
Cylinder, Hydraulic Cylinder, Arm Bushings, Pins, Bucket Link and Bucket Cylinder Lines (Long Arm).....	380	DRAIN COCK, AIR CONDITIONER.....	258
Cylinder, Hydraulic Cylinder, Arm Cylinder Components (- 275292).....	490	DRAIN COCK, FUEL TANK.....	146
Cylinder, Hydraulic Cylinder, Blade Angle Hydraulic Cylinder.....	308	DRAIN COCK, RADIATOR.....	132
Cylinder, Hydraulic Cylinder, Blade Angle Hydraulic Cylinder Components.....	484	DRAIN PLUG.....	294
Cylinder, Hydraulic Cylinder, Blade Cylinder Components (- 275344).....	494	DRAIN PLUG, ENGINE OIL PAN.....	100
Cylinder, Hydraulic Cylinder, Blade Cylinder Components (275344 - 275860).....	496	DRAIN PLUG, WATER PUMP.....	114
Cylinder, Hydraulic Cylinder, Blade Support.....	300	DRIVE GEAR.....	108
Cylinder, Hydraulic Cylinder, Boom Cylinder (Cab) (- 275296).....	480	Drive, Drive Sprocket, Travel Motor.....	80
Cylinder, Hydraulic Cylinder, Boom Cylinder (Canopy) (- 275367).....	476	DUCT, AIR CLEANER (STANDARD).....	140
Cylinder, Hydraulic Cylinder, Boom Cylinder (Canopy) (275368 -).....	478	Duct, Air Conditioner.....	262
Cylinder, Hydraulic Cylinder, Boom Cylinder Components, Cab (275297 -).....	482	DUCT, AIR CONDITIONER.....	252
Cylinder, Hydraulic Cylinder, Boom Lines and Fittings (Upper).....	432	DUCT, AIR CONDITIONING UNIT.....	246
Cylinder, Hydraulic Cylinder, Boom Swing Cylinder (- 275356).....	472		
Cylinder, Hydraulic Cylinder, Bucket Clamp Cylinder Components.....	502	E	
Cylinder, Hydraulic Cylinder, BUCKET CLAMP CYLINDER COMPONENTS.....	500	ELEMENT, FILTER, HYDRAULIC OIL RESERVOIR.....	294, 296
Cylinder, Hydraulic Cylinder, Bucket Cylinder Components (- 275287).....	486	ELEMENT, FUEL AND WATER SEPARATOR.....	122
Cylinder, Hydraulic Cylinder, Bucket Cylinder Components (275288 -).....	488	ELEMENT, FUEL FILTER.....	122
Cylinder, Hydraulic Cylinder, Hydraulic Bucket Clamp.....	338, 340	ELEMENT, OIL FILTER.....	436
Cylinder, Hydraulic Cylinder, Track Adjuster (Rubber) (- 275360).....	70	EMERGENCY HAMMER.....	192
Cylinder, Hydraulic Cylinder, Track Adjuster (Steel).....	74	Engine.....	94
Cylinder, Lift, Power Angle Blade.....	300	Engine Block.....	96
CYLINDER, SWING (- 275356).....	472	Engine Block Heater.....	130
Cylinder, Swing (275357 -).....	474	ENGINE COMPARTMENT COVER (INSIDE).....	282
Cylinder, Track Adjuster (Rubber) (275361 -).....	72	Engine Control Console.....	158
Cylinder, Track Adjuster (Steel) (275361 -).....	76	ENGINE CONTROL CONSOLE POTENTIOMETER.....	158
		ENGINE CONTROLLER.....	158
D		Engine Coolant Heater.....	130
Damper, Torsional Damper, Travel Pilot Control Valve Components.....	370	ENGINE CYLINDER BLOCK.....	96
Decal, Label, Air Conditioner Isolators And Support.....	252	ENGINE CYLINDER HEAD.....	102
Decal, Label, Cab Floor Parts.....	184	ENGINE CYLINDER HEAD COVER.....	102
Decal, Label, Canopy Floor Plate.....	224	ENGINE EXHAUST MANIFOLD.....	106
Decal, Label, High Precision Filter.....	296	ENGINE FAN.....	114
Decal, Label, Labels and Decals (Cab and Canopy).....	154	ENGINE FAN BELT.....	114
Decal, Label, Labels and Decals (Cab).....	150	Engine Gasket Kit.....	128
Decal, Label, Labels and Decals (Canopy).....	152	ENGINE GLOW PLUG.....	102
Decal, Label, Main Control Valve (Power Angle Blade).....	410	ENGINE INTAKE MANIFOLD.....	104
Decal, Label, Pilot Valve (LH) Lines.....	462	ENGINE MOUNTING BRACKET.....	136
Decal, Label, Power Angle Blade Decals.....	156	Engine Mounts.....	144
Decal, Label, Quick Coupler.....	388	ENGINE OIL FILTER.....	112
Decal, Periodic Maintenance (Canopy).....	152	Engine Oil Filter, Oil Pump, and Oil Line.....	112
Decal, ROPS (Canopy).....	152	ENGINE OILING SYSTEM.....	112
Decal/Label, Periodic Maintenance.....	150	ENGINE OVERHAUL GASKET KIT.....	128
DECALS (CAB AND CANOPY).....	154	ENGINE SPEED CONTROL CABLE AND LEVER.....	138
DECALS (CAB).....	150	ENGINE SPEED CONTROL LINKAGE.....	138
DECALS (CANOPY).....	152	ENGINE SPEED CONTROL WIRE HARNESS.....	138
DECALS, POWER ANGLE BLADE.....	156	ENGINE SPEED PRESSURE SENSOR.....	138
Deflector, Cylinder Head, Rocker Arms, and Valves.....	102	ENGINE STOP SOLENOID, FUEL INJECTION PUMP.....	118
DIAL, ENGINE CONTROL.....	158	ENGINE TEMPERATURE SENSOR.....	114
Diode, Console Wiring Harness.....	164	ENGINE THERMOSTAT.....	114
DIODE, CONSOLE WIRING HARNESS.....	164	ENGINE WATER OUTLET PIPE.....	114
Dipstick, Engine Oil Filter, Oil Pump, and Oil Line.....	112	Engine, Diesel Engine, Engine.....	94
		Engine, Engine Controller, Engine Control Console.....	158
		Engine, Engine Cylinder Head Gasket, Engine Block.....	96
		Engine, Engine Cylinder Head Gasket, Engine Gasket Kit.....	128
		EVAPORATOR, AIR CONDITIONER.....	248
		Evaporator, Air Conditioner Components.....	248
		Excavator Hammer Adapter Kit.....	342
		Exhaust Manifold.....	106
		Exhaust Pipe Silencer, Muffler, Muffler.....	142
		EXHAUST PIPE, MUFFLER.....	142
		EXHAUST VALVE, ENGINE.....	102
		EXIT KIT, SECONDARY.....	212
		F	
		FAN BELT, ENGINE.....	114
		FAN GUARD, (CAB).....	258
		FAN GUARD, RADIATOR (CANOPY).....	136
		Fan, Blower Fan, Air Conditioner Components.....	248

Alphabetical Index - Continued

	Page		Page
FAN, ENGINE.....	114	FUEL TANK SEPARATOR.....	148
Fan, Water Pump.....	114	FUEL TANK SEPARATOR FILTER ELEMENT.....	148
Filler Cap, Radiator.....	132	FUEL TANK WATER SEPARATOR BRACKET.....	148
FILTER ELEMENT, FUEL TANK SEPARATOR.....	148	Fuse, Console Wiring Harness.....	164
FILTER ELEMENT, HYDRAULIC OIL RESERVOIR.....	294, 296	Fuse, Machine Wiring Harness.....	160
FILTER, AIR CLEANER.....	140	FUSES, CONSOLE WIRING HARNESS.....	164
FILTER, AIR CONDITIONER.....	248	Fusible Link.....	160
Filter, Air Filter, Air Conditioner Components.....	248		
Filter, Cab Control Levers (Auxiliary Function).....	362	G	
Filter, Control Valve Lines (Pump & Filter).....	436	GASKET KIT, ENGINE.....	128
FILTER, ENGINE OIL.....	112	Gasket, Battery Compartment.....	162
Filter, Filter Element, Air Cleaner (Standard).....	140	Gasket, Cab Hardware.....	204
Filter, Filter Element, Air Conditioner Components.....	248	Gasket, Canopy.....	220
Filter, Filter Element, Control Valve Lines (Pump & Filter).....	436	GASKET, CYLINDER HEAD.....	96, 102
Filter, Filter Element, Fuel Tank Lines.....	148	Gasket, Cylinder Head, Rocker Arms, and Valves.....	102
Filter, Filter Element, High Precision Filter.....	296	Gasket, Engine Cylinder Head Gasket, Engine Block.....	96
Filter, Filter Element, Hydraulic Oil Filter and Solenoid Valve Lines.....	468	Gasket, Engine Cylinder Head Gasket, Engine Gasket Kit.....	128
Filter, Filter Element, Hydraulic Oil Reservoir.....	294	Gasket, Engine Gasket Kit.....	128
FILTER, FUEL.....	122	Gasket, Engine Oil Filter, Oil Pump, and Oil Line.....	112
FILTER, FUEL AND WATER SEPARATOR.....	122	Gasket, Exhaust Manifold.....	106
Filter, Fuel Filter, Fuel Filters.....	122	GASKET, EXHAUST MANIFOLD.....	106
FILTER, FUEL TANK.....	146	Gasket, Gasket Kit, Engine Gasket Kit.....	128
Filter, Hydraulic Oil Filter and Solenoid Valve Lines.....	468	GASKET, GOVERNOR, FUEL INJECTION PUMP.....	118
FILTER, OIL.....	436	Gasket, Intake Manifold.....	104
Filter, Oil Filter, Engine Oil Filter, Oil Pump, and Oil Line.....	112	GASKET, INTAKE MANIFOLD.....	104
FILTER, OIL, INTERNAL HYDRAULIC.....	468	Gasket, Machine Wiring Harness.....	160
FLOAT, FUEL TANK.....	162	Gasket, Main Frame.....	172
Floodlamp Lamp, Bulb, Cab Hardware.....	204	Gasket, Main Hydraulic Pump Components.....	288
Floodlamp Lamp, Bulb, Canopy.....	220	Gasket, Muffler.....	142
Floodlamp Lamp, Bulb, Machine Wiring Harness.....	160	GASKET, MUFFLER.....	142
FLOOR ASSEMBLY HARDWARE.....	180	GASKET, OIL FILL CAP; TIMING GEAR COVER.....	98
Floor Bracket.....	278	GASKET, OIL FILL CAP; VALVE COVER.....	102
Floor Mat.....	196	GASKET, THERMOSTAT.....	114
FLOOR MAT, CAB.....	196	Gasket, Travel Pilot Control Valve Components.....	370
FLOOR MAT, CANOPY.....	228	GASKET, VALVE COVER.....	102
FLOOR PARTS (CAB).....	184	Gasket, Water Pump.....	114
FLOOR PLATES, CANOPY.....	224	GASKET, WATER PUMP.....	114
FLOOR TILT HINGE.....	182	Gauge, Level Gauge, Hydraulic Reservoir Installation.....	292
FLOW CONTROL VALVE, PROPEL MOTOR.....	92	GAUGE, LEVEL, HYDRAULIC RESERVOIR.....	292
FLOW CONTROL VALVE, TRAVEL MOTOR.....	92	GAUGE, OIL LEVEL; OIL PAN.....	112
FLYWHEEL.....	110	GEAR BOX, SWING DRIVE.....	514
FLYWHEEL HOUSING.....	100	GEAR, CAMSHAFT.....	108
Flywheel Housing and Oil Pan.....	100	Gear, Camshaft and Drive Gears.....	108
Flywheel, Crankshaft, Pistons, and Flywheel.....	110	Gear, Crankshaft, Pistons, and Flywheel.....	110
FOOT REST (CAB).....	188	GEAR, FUEL INJECTION PUMP.....	108
FOOT REST (CANOPY).....	226	Gear, Gear Case, Starter.....	124
Frame, Alternator.....	126	Gear, Gear Case, Timing Gear Cover.....	98
Frame, Console (LH).....	358	Gear, Gear Case, Travel Motor Components (3 of 4).....	90
FRAME, MAIN.....	172	GEAR, IDLE.....	108
Frame, Main Frame.....	172	Gear, Idler Gear, Camshaft and Drive Gears.....	108
FRAME, POWER ANGLE BLADE.....	304	GEAR, RING.....	110
Frame, Power Angle Blade Frame.....	304	Gear, Ring Gear, Crankshaft, Pistons, and Flywheel.....	110
Frame, Right Console.....	356	Gear, Ring Gear, Swing Drive Gear Box.....	514
Frame, Track Frame (- 275360).....	46	Gear, Starter.....	124
Frame, Track Frame (275361 -).....	48	Gear, Sun Gear, Swing Drive Gear Box.....	514
Freeze Switch.....	248	Gear, Swing Drive Gear Box.....	514
FRONT CAB LIGHT.....	204	Gear, Travel Motor Components (3 of 4).....	90
Front Idler (- 275360).....	50	GEARBOX COMPONENTS, PROPEL MOTOR.....	90
Front Idler (275361 -).....	52	GEARBOX COMPONENTS, TRAVEL MOTOR.....	90
Front Lower Window.....	208	GEARBOX, SWING DRIVE.....	514
FRONT MAIN SEAL, ENGINE.....	98	GLASS, CAB DOOR.....	198
FRONT WINDOW SWITCH.....	200	GLASS, CAB FRONT LOWER GLASS.....	208
FRONT WINDOW, CAB.....	200	GLASS, CAB FRONT WINDOW.....	200
FUEL AND WATER SEPARATOR FILTER.....	122	GLASS, CAB WINDOWS.....	206
FUEL FILTER.....	122	GLASS, RIGHT LOWER CAB.....	208
Fuel Filters.....	122	GLOW PLUG, ENGINE CYLINDER HEAD.....	102
FUEL HOSE, AIR CLEANER (STANDARD).....	140	Governor.....	118
FUEL HOSES.....	148	GOVERNOR, FUEL INJECTION PUMP.....	118
FUEL INJECTION NOZZLES.....	120	Grab Bar.....	222
Fuel Injection Nozzles and Lines.....	120	Grab Bar, Handrail, Grab Bar.....	222
Fuel Injection Pump.....	116	GRAB BAR, RIGHT SIDE OF UNIT.....	222
FUEL INJECTION PUMP COOLANT LINES.....	114	GREASE FITTING, MAIN FRAME.....	172
FUEL INJECTION PUMP GEAR.....	108	Grille, Air Conditioner Duct and Cover.....	262
FUEL INJECTION PUMP OIL LINE.....	112	Grip, Blade Control Lever and Lines.....	346
FUEL LINE; INJECTION PUMP TO FUEL FILTER.....	122	Grip, Cab Control Levers (Auxiliary Function).....	362
FUEL LINES.....	148	Grip, Cab Windows.....	206
FUEL PUMP.....	122, 148	Grip, Console (LH).....	358
Fuel Tank.....	146	Grip, Front Lower Window.....	208
FUEL TANK DRAIN COCK.....	146	GRIP, POWER ANGLE BLADE.....	366
FUEL TANK FILTER.....	146	Grip, Power Angle Blade Lever.....	366
FUEL TANK FLOAT.....	162	GRIP, TRAVEL CONTROLS (CANOPY).....	348
FUEL TANK HOSE.....	146		
Fuel Tank Lines.....	148		

Alphabetical Index - Continued

	Page		Page
Grip, Travel Levers and Pedals (Cab).....	350	High Precision Filter	296
Grip, Travel Levers and Pedals (Canopy).....	348	Hinge, Cab Door.....	198
GROUND CABLE, BATTERY.....	162	HINGE, CAB DOOR.....	198
GUARD, BLADE ANGLE CYLINDER.....	302	HINGE, CAB TILT.....	182
GUARD, BLADE CYLINDER (POWER ANGLE BLADE).....	306	HINGE, FLOOR TILT.....	182
GUARD, FAN (CAB).....	258	Hinge, Rear Cover.....	266
GUARD, RADIATOR FAN (CANOPY).....	136	HINGE, REAR COVER.....	266, 284
Guard, Steel (SN 275361-) (275361 -).....	68	Hinge, Rear Cover Hinge.....	284
Guards, Track (Steel) (SN -275360) (- 275360).....	66	Holder, Air Conditioner Components.....	248
GUIDE, HOSE.....	176	Holder, Alternator.....	126
		Holder, Arm Cylinder Components (- 275292).....	490
		Holder, Boom Cylinder (Cab) (- 275296).....	480
H		Holder, Boom Cylinder (Canopy) (- 275367).....	476
Hammer, Cab.....	192	Holder, Bucket Cylinder Components (- 275287).....	486
HAMMER, EMERGENCY.....	192	Holder, Cab.....	192
HAND HOLD, CAB LOWER LEFT.....	206	Holder, Cab Door.....	198
HANDHOLD, CAB FRONT.....	200	Holder, Canopy.....	220
Handle, Cab Door.....	198	Holder, Engine Mounts.....	144
HANDLE, CAB DOOR.....	198	HOLDER, FUEL INJECTION NOZZLE.....	120
Handle, Rotary Valve.....	420	Holder, Fuel Injection Pump.....	116
HANDLE, ROTARY VALVE.....	420	Holder, Main Hydraulic Pump Components.....	288
Handle, Secondary Exit (Fixed Rear Window).....	212	Holder, Nozzle Holder, Fuel Injection Nozzles and Lines.....	120
HANDRAIL, CAB.....	208	Holder, Starter.....	124
Handrail, Grab Bar.....	222	Holder, Swing Motor Components.....	512
HANDRAIL, RIGHT SIDE OF UNIT.....	222	Holder, Track Frame (- 275360).....	46
HANGER, ENGINE.....	102	Holder, Track Frame (275361 -).....	48
HARDWARE, CAB.....	204	Holder, Travel Motor Components (3 of 4).....	90
HARDWARE, CAB FLOOR.....	180	Holder, Travel Pilot Control Valve Components.....	370
HARDWARE, TRACK FRAME.....	42	HOOK, LIFT; ENGINE.....	102
Harness, AC Compressor WRG Harness, Air Conditioner Components.....	248	Horn.....	160
Harness, Cab Wiring Harness, Console Wiring Harness.....	164	Horn, Machine Wiring Harness.....	160
Harness, Wiper Motor Wiring Harness, Cab Hardware.....	204	Hose Guide.....	176
Harness, Wiring Harness, Air Conditioner.....	246	HOSE GUIDE, CONTROL VALVE LINES.....	434
Harness, Wiring Harness, Air Conditioner Components.....	248	HOSE PROTECTORS, BOOM LINES.....	448
Harness, Wiring Harness, Air Conditioner Condenser (- 275163).....	254	Hose, Air Cleaner (Standard).....	140
Harness, Wiring Harness, Air Conditioner Condenser (275164 -).....	256	HOSE, AIR CLEANER (STANDARD).....	140
Harness, Wiring Harness, Battery Compartment.....	162	HOSE, AIR CONDITIONER.....	250, 258
Harness, Wiring Harness, Cab Control Levers (Auxiliary Function).....	362	Hose, Air Conditioner Compressor.....	258
Harness, Wiring Harness, Cab Front Window.....	200	Hose, Air Conditioner Condenser (- 275163).....	254
Harness, Wiring Harness, Cab Hardware.....	204	Hose, Air Conditioner Condenser (275164 -).....	256
Harness, Wiring Harness, Canopy.....	220	Hose, Air Conditioner Lines.....	250
Harness, Wiring Harness, Console Wiring Harness.....	164	Hose, Air Conditioner Solenoid and Lines.....	260
Harness, Wiring Harness, ENGINE SPEED CONTROL LINKAGE.....	138	HOSE, AIR CONDITIONER SOLENOID VALVE.....	260
Harness, Wiring Harness, Machine Wiring Harness.....	160	HOSE, ATTACHMENT PEDAL.....	364
Harness, Wiring Harness, Power Angle Blade Lever.....	366	Hose, Blade Control Lever and Lines.....	346
Harness, Wiring Harness, Solenoid Valve Lines To Hydraulic Reservoir (Power Angle Blade).....	454	HOSE, BLADE PILOT VALVE TO CONTROL VALVE.....	346
HARNES, WIRING; GLOW PLUG.....	102	Hose, Boom Lines and Fittings (Upper).....	432
HARNES, WIRING; POWER ANGLE BLADE LEVER.....	366	Hose, Bulk Hose, Air Conditioner Isolators And Support.....	252
HARNES, WIRING; SOLENOID VALVE (POWER ANGLE BLADE).....	454	Hose, Bulk Hose, Hydraulic Oil Filter and Solenoid Valve Lines.....	468
HEAD GASKET, ENGINE.....	96	Hose, Bulk Hose, Swing Motor Lines and Fittings.....	466
HEAD, CYLINDER; ENGINE.....	102	Hose, Cab Control Levers, Auxiliary Function.....	362
HEADLIGHT, CANOPY.....	220	Hose, Cab Hardware.....	204
HEADLINER, CAB.....	206	HOSE, CONTROL VALVE (BOOM SWING).....	430
Heater, Air Heater Controller, Air Conditioner.....	246	HOSE, CONTROL VALVE FOR BLADE.....	344
Heater, Coolant Heater, Engine Coolant Heater.....	130	Hose, Control Valve Lines (Boom Swing).....	440
Heater, Engine Block.....	130	Hose, Control Valve Lines To Travel Controller.....	372
Heater, Engine Coolant.....	130	HOSE, CONTROL VALVE TO OIL COOLER.....	290
Heavy Duty Bucket (18", 3.6 Cu Ft).....	320	HOSE, CONTROL VALVE TO PILOT VALVE.....	440
Heavy Duty Bucket (24", 5.2 Cu Ft).....	324	HOSE, CONTROL VALVE TO SELECTOR VALVE.....	446
Heavy Duty Bucket (30", 6.8 Cu Ft).....	328	HOSE, CONTROL VALVE TO SWING MOTOR.....	290
Heavy Duty Bucket (36", 8.3 Cu Ft).....	332	Hose, Engine Oil Filter, Oil Pump, and Oil Line.....	112
Heavy-Duty Bucket with TF Teeth, 30.48 cm (12 in), 0.059 m ³ (2.1 ft ³).....	312	Hose, Fuel Hose, Fuel Tank.....	146
Heavy-Duty Bucket with TF Teeth, 45.72 cm (18 in), 0.102 m ³ (3.6 ft ³).....	320	HOSE, FUEL TANK.....	146
Heavy-Duty Bucket with TF Teeth, 60.96 cm (24 in) 0.147 m ³ (5.2 ft ³).....	324	Hose, Fuel Tank Lines.....	148
Heavy-Duty Bucket with TF Teeth, 76.2 cm (30 in), 0.192 m ³ (6.8 ft ³).....	328	HOSE, FUEL, AIR CLEANER (STANDARD).....	140
Heavy-Duty Bucket with TK Teeth, 30.48 cm (12 in), 0.059 m ³ (2.1 ft ³).....	316	Hose, Hammer Adapter Kit.....	342
Heavy-Duty Bucket with TK Teeth, 45.72 cm (18 in), 0.102 m ³ (3.6 ft ³).....	322	Hose, Hose Clamp, Air Cleaner (Standard).....	140
Heavy-Duty Bucket with TK Teeth, 60.96 cm (24 in), 0.147 m ³ (5.2 ft ³).....	326	Hose, Hose Clamp, Air Conditioner Components.....	248
Heavy-Duty Bucket with TK Teeth, 76.2 cm (30 in), 0.192 m ³ (6.8 ft ³).....	330	Hose, Hose Clamp, Air Conditioner Compressor.....	258
Heavy-Duty Bucket with TK Teeth, 91.44 cm (36 in), 0.235 m ³ (8.3 ft ³).....	332	Hose, Hose Clamp, Air Conditioner Condenser (- 275163).....	254
		Hose, Hose Clamp, Air Conditioner Condenser (275164 -).....	256
		Hose, Hose Clamp, Air Conditioner Isolators And Support.....	252
		Hose, Hose Clamp, Air Conditioner Lines.....	250
		Hose, Hose Clamp, Blade Pilot Lines (Power Angle Blade).....	460
		Hose, Hose Clamp, Control Valve Lines To Selector Valve.....	446
		Hose, Hose Clamp, Fuel Tank.....	146
		Hose, Hose Clamp, Hydraulic Bucket Clamp.....	338, 340
		Hose, Hose Clamp, Intake Manifold.....	104
		Hose, Hose Clamp, Oil Cooler Lines and Fittings.....	290
		Hose, Hose Clamp, Radiator.....	132
		Hose, Hose Guard, Air Conditioner Compressor.....	258
		Hose, Hose Guard, Air Conditioner Condenser (- 275163).....	254
		Hose, Hose Guard, Air Conditioner Lines.....	250

Alphabetical Index - Continued

<i>Page</i>	<i>Page</i>		
Hose, Hose Guard, Boom Hose Protectors.....	448	HOSES, BLADE ANGLE CYLINDER (POWER ANGLE BLADE).....	458
Hose, Hose Guard, Boom Lines To Arm.....	442	HOSES, BLADE CYLINDER (POWER ANGLE BLADE).....	458
Hose, Hose Guard, Cab Control Levers (Auxiliary Function).....	362	Hoses, Boom (Upper).....	432
Hose, Hose Guard, Control Valve Lines (Pump & Filter).....	436	HOSES, BOOM CYLINDER TO MAIN CONTROL VALVE.....	470
Hose, Hose Guard, Engine Mounts.....	144	HOSES, BOOM SWING CYLINDER TO MAIN CONTROL VALVE.....	470
Hose, Hose Guard, Fuel Filters.....	122	HOSES, BUCKET CYLINDER TO MAIN CONTROL VALVE.....	470
Hose, Hose Guard, Fuel Tank Lines.....	148	HOSES, CONTROL VALVE (1) (POWER ANGLE BLADE).....	450
Hose, Hose Guard, Oil Cooler Lines and Fittings.....	290	HOSES, CONTROL VALVE (2) (POWER ANGLE BLADE).....	452
Hose, Hose Guard, Pilot Valve (LH) Lines.....	462	HOSES, FUEL.....	148
Hose, Hose Guard, Travel Motor Hydraulic Lines.....	82	HOSES, MAIN CONTROL VALVE HYDRAULIC.....	470
Hose, Hose Guard, Travel Motor Hydraulic Lines (Power Angle Blade).....	84	HOSES, MAIN CONTROL VALVE TO ARM CYLINDER.....	470
Hose, Hydraulic Hose, Arm Bushings, Pins, Bucket Link and Bucket Cylinder Lines.....	376	HOSES, MAIN CONTROL VALVE TO BOOM CYLINDER.....	470
Hose, Hydraulic Hose, Arm Bushings, Pins, Bucket Link and Bucket Cylinder Lines (Long Arm).....	380	HOSES, MAIN CONTROL VALVE TO BOOM SWING CYLINDER.....	470
Hose, Hydraulic Hose, Blade Cylinders Hydraulic Lines (Power Angle Blade).....	458	HOSES, MAIN CONTROL VALVE TO BUCKET CYLINDER.....	470
Hose, Hydraulic Hose, Blade Pilot Lines (Power Angle Blade).....	460	HOSES, MAIN CONTROL VALVE TO SWING MOTOR.....	470
Hose, Hydraulic Hose, Boom Lines and Fittings (Upper).....	432	HOSES, PATTERN CHANGER.....	444
Hose, Hydraulic Hose, Boom Lines To Arm.....	442	HOSES, PILOT (HYD. PUMP, CONTROL VALVE, SOLENOID, OIL FILTER).....	468
Hose, Hydraulic Hose, Cab Control Levers (Auxiliary Function).....	362	HOSES, PILOT (HYDRAULIC OIL RESERVOIR, SWING MOTOR CONTROL VALVE).....	466
Hose, Hydraulic Hose, Control Valve Hydraulic Lines (1) (Power Angle Blade).....	450	Hoses, Pilot Valve (LH).....	462
Hose, Hydraulic Hose, Control Valve Hydraulic Lines (2) (Power Angle Blade).....	452	HOSES, PILOT VALVE (RH).....	464
Hose, Hydraulic Hose, Control Valve Lines.....	434	HOSES, POWER ANGLE BLADE.....	460
Hose, Hydraulic Hose, Control Valve Lines (Attachment Pedal).....	364	HOSES, SOLENOID VALVE TO POWER ANGLE BLADE SPOOL.....	456
Hose, Hydraulic Hose, Control Valve Lines (Blade).....	344	HOSES, SOLENOID VALVE TO RESERVOIR (POWER ANGLE BLADE).....	454
Hose, Hydraulic Hose, Control Valve Lines (Boom Swing).....	430, 440	HOSES, SWING MOTOR TO MAIN CONTROL VALVE.....	470
Hose, Hydraulic Hose, Control Valve Lines (Pump & Filter).....	436	HOSES, TRAVEL MOTOR (POWER ANGLE BLADE).....	84
Hose, Hydraulic Hose, Control Valve Lines (Travel).....	428	Housing, Air Cleaner (Standard).....	140
Hose, Hydraulic Hose, Control Valve Lines To Selector Valve.....	446	Housing, Arm Section (Control Valve).....	402
Hose, Hydraulic Hose, Control Valve Lines To Travel Controller.....	372	Housing, Auxiliary Section (Control Valve).....	406
Hose, Hydraulic Hose, Excavator Hammer Adapter Kit.....	342	Housing, Auxiliary Section Control Valve (Power Angle Blade).....	414
Hose, Hydraulic Hose, Hydraulic Bucket Clamp.....	338, 340	Housing, Blade Section (Control Valve).....	400
Hose, Hydraulic Hose, Hydraulic Hoses From Control Valve.....	470	Housing, Bucket Section (Control Valve).....	404
Hose, Hydraulic Hose, Hydraulic Oil Filter and Solenoid Valve Lines.....	468	Housing, Control Valve Section (Boom Swing).....	424
Hose, Hydraulic Hose, Oil Cooler Lines and Fittings.....	290	Housing, Control Valve Section (Boom).....	426
Hose, Hydraulic Hose, Pattern Changer.....	444	HOUSING, EXHAUST MANIFOLD.....	106
Hose, Hydraulic Hose, Pilot Valve (LH) Lines.....	462	HOUSING, FLYWHEEL.....	100
Hose, Hydraulic Hose, Solenoid Valve Lines To Hydraulic Reservoir (Power Angle Blade).....	454	Housing, Flywheel Housing and Oil Pan.....	100
Hose, Hydraulic Hose, Solenoid Valve Lines To Power Angle Blade Spool.....	456	Housing, Inlet Mid-Section Control Valve.....	394
Hose, Hydraulic Hose, Swing Motor Lines and Fittings.....	466	Housing, Inlet Section (Main Valve).....	392
Hose, Hydraulic Hose, Travel Motor Hydraulic Lines.....	82	HOUSING, INTAKE MANIFOLD.....	104
Hose, Hydraulic Hose, Travel Motor Hydraulic Lines (Power Angle Blade).....	84	Housing, Intermediate Housing, Flywheel Housing and Oil Pan.....	100
Hose, Hydraulic Oil Filter and Solenoid Valve Lines.....	468	Housing, Main Control Valve, Spool Section (Power Angle Blade).....	412
HOSE, HYDRAULIC RESERVOIR.....	292	Housing, Pilot Control Valve.....	368
Hose, Hydraulic Reservoir Installation.....	292	Housing, Rotary Manifold.....	510
Hose, Main Frame.....	172	Housing, Rotary Valve.....	420
HOSE, MAIN FRAME.....	172	HOUSING, ROTARY VALVE.....	420
HOSE, MANIFOLD TO PILOT CONTROLLER.....	438	Housing, Selector Valve (Power Angle Blade).....	418
Hose, Oil Cooler Lines and Fittings.....	290	Housing, Solenoid Valve (Power Angle Blade).....	408
HOSE, OIL COOLER TO CONTROL VALVE.....	290	HOUSING, SOLENOID VALVE (TWO-WAY).....	422
Hose, Pattern Changer.....	444	Housing, Starter.....	124
HOSE, PILOT CONTROLLER TO MANIFOLD.....	438	Housing, Swing Drive Gear Box.....	514
Hose, Pilot Lines.....	438	Housing, Swing Motor Pilot Valve.....	360
Hose, Pilot Valve (LH) Lines.....	462	Housing, Swing Motor Pilot Valve Components.....	360
Hose, Pilot Valve (RH) Lines and Manifolds.....	464	Housing, Swing Section (Control Valve).....	396
HOSE, PILOT VALVE TO CONTROL VALVE.....	440	HOUSING, THERMOSTAT.....	114
Hose, Radiator.....	132	Housing, Travel Motor Components (1 of 4).....	86
Hose, Radiator Hose, Air Conditioner Isolators And Support.....	252	Housing, Travel Motor Components (3 of 4).....	90
Hose, Radiator Hose, Radiator.....	132	Housing, Travel Motor Components (4 of 4).....	92
Hose, Rear Cover.....	266	Housing, Travel Section (Control Valve).....	398
Hose, Refrigerant Hose, Air Conditioner.....	246	Hub, Water Pump.....	114
Hose, Refrigerant Hose, Air Conditioner Components.....	248	Hydraulic Bucket Clamp.....	338, 340
Hose, Refrigerant Hose, Air Conditioner Compressor.....	258	Hydraulic Bucket Clamp Cylinder.....	340
Hose, Refrigerant Hose, Air Conditioner Condenser (- 275163).....	254	Hydraulic Hoses From Control Valve.....	470
Hose, Refrigerant Hose, Air Conditioner Lines.....	250	HYDRAULIC HOSES, MAIN CONTROL VALVE.....	470
HOSE, REFRIGERANT, AIR CONDITIONER.....	248	HYDRAULIC LINE, MAIN CONTROL VALVE TO SWING MOTOR.....	470
HOSE, SELECTOR VALVE TO CONTROL VALVE.....	446	HYDRAULIC LINES, BLADE ANGLE CYLINDER (POWER ANGLE BLADE).....	458
Hose, Swing Motor Lines and Fittings.....	466	HYDRAULIC LINES, BLADE CYLINDER (POWER ANGLE BLADE).....	458
HOSE, SWING MOTOR TO CONTROL VALVE.....	290	HYDRAULIC LINES, CONTROL VALVE (1) (POWER ANGLE BLADE).....	450
HOSE, TRAVEL CONTROL VALVE.....	428	HYDRAULIC LINES, CONTROL VALVE (2) (POWER ANGLE BLADE).....	452
Hose, Travel Motor Hydraulic Lines.....	82	HYDRAULIC LINES, SOLENOID VALVE TO POWER ANGLE BLADE SPOOL.....	456
HOSE, VINYL, REAR COVER.....	266	HYDRAULIC LINES, SOLENOID VALVE TO RESERVOIR (POWER ANGLE BLADE).....	454
HOSE, WATER, AIR CONDITIONER.....	252	HYDRAULIC LINES, TRAVEL MOTOR (POWER ANGLE BLADE).....	84
HOSE, WATER, RADIATOR.....	132	HYDRAULIC OIL COOLER LINES AND FITTINGS.....	290
HOSES, ARM CYLINDER TO MAIN CONTROL VALVE.....	470	Hydraulic Oil Filter and Solenoid Valve Lines.....	468
		Hydraulic Oil Reservoir.....	294

Alphabetical Index - Continued

<i>Page</i>	<i>Page</i>
HYDRAULIC OIL RESERVOIR (PILOT LINES).....	466
HYDRAULIC OIL RESERVOIR COVER.....	294
HYDRAULIC OIL RESERVOIR SUCTION FILTER.....	294
HYDRAULIC PUMP PILOT LINES.....	468
HYDRAULIC PUMP, MAIN, COMPONENTS.....	288
HYDRAULIC RESERVOIR.....	292
HYDRAULIC RESERVOIR HOSE.....	292
Hydraulic Reservoir Installation.....	292
HYDRAULIC SOLENOID VALVE (COMPONENTS) (TWO-WAY)....	422
Hydraulic Swing Motor Pilot Valve.....	360
HYDRAULIC, PUMP.....	436
I	
IDLE GEAR.....	108
IDLE LIMITER, FUEL INJECTION PUMP.....	118
Idler, Front (SN -275360) (- 275360).....	50
Idler, Front (SN 275361-) (275361 -).....	52
Idler, Front Idler (- 275360).....	50
Idler, Front Idler (275361 -).....	52
Idler, Idler Gear, Camshaft and Drive Gears.....	108
Idler, Track Idler, Front Idler (- 275360).....	50
Ignition Switch.....	164
Ignition Switch Key.....	164
INDICATOR, AIR CLEANER (STANDARD).....	140
Indicator, Air Restriction Indicator, Air Cleaner (Standard).....	140
INJECTION PUMP GEAR, FUEL.....	108
INJECTION PUMP LINE TO FUEL FILTER.....	122
Injection Pump Shutoff Solenoid.....	118
INJECTION PUMP, FUEL.....	116
Injector Injection nozzle, Injection Nozzle, Fuel Injection Nozzles and Lines.....	120
Injector Injection nozzle, Nozzle Holder, Fuel Injection Nozzles and Lines.....	120
Injector Injection nozzle, Nozzle, Cab Hardware.....	204
INJECTOR, FUEL.....	120
Inlet Mid-Section Control Valve.....	394
Inlet Section (Main Valve).....	392
INLET VALVE, ENGINE.....	102
INSULATION.....	282
Insulation (Cab).....	282
Insulator, Cab Floor Parts.....	184
Insulator, Standard Seat, Canopy.....	234
Intake Manifold.....	104
INTAKE MUFFLER.....	104
INTAKE VALVE, ENGINE.....	102
INTERIOR COVER ISOLATORS.....	274
INTERIOR COVERS, CAB.....	192
INTERIOR RIGHT COVER.....	190
Isolator, Air Cleaner (Standard).....	140
ISOLATOR, AIR CLEANER (STANDARD).....	140
Isolator, Air Conditioner.....	246
ISOLATOR, AIR CONDITIONER.....	252
Isolator, Air Conditioner Components.....	248
Isolator, Air Conditioner Compressor.....	258
Isolator, Air Conditioner Duct and Cover.....	262
Isolator, Air Conditioner Isolators And Support.....	252
Isolator, Battery Compartment.....	162
Isolator, Blade Pilot Lines (Power Angle Blade).....	460
Isolator, Boom Hose Protectors.....	448
Isolator, Boom Lines and Fittings (Upper).....	432
Isolator, Cab.....	192
Isolator, Cab (Without Radio).....	214
Isolator, Cab Floor Mounts.....	182
Isolator, Cab Floor Parts.....	184
Isolator, Cab Floor Plate Hardware.....	180
Isolator, Cab Hardware.....	204
Isolator, Cab Inside Right Cover.....	190
Isolator, Cab Tilt Assembly.....	178
Isolator, Canopy.....	220
Isolator, Canopy Floor Plate.....	224
ISOLATOR, CANOPY FLOOR PLATES.....	224
Isolator, Canopy Footrest.....	226
Isolator, Console (LH).....	358
Isolator, Console Wiring Harness.....	164
Isolator, Control Valve Lines To Selector Valve.....	446
Isolator, Cylinder Guard (Boom Swing).....	280
Isolator, Engine Mounts.....	144
Isolator, Floor Bracket.....	278
ISOLATOR, FLOOR PARTS (CAB).....	184
Isolator, Front Lower Window.....	208
Isolator, Fuel Tank Lines.....	148
Isolator, Hydraulic Reservoir Installation.....	292
Isolator, Insulation (Cab).....	282
Isolator, Isolators (Cover).....	272
Isolator, Isolators (Interior Cover).....	274
ISOLATOR, LOWER CANOPY COVERS.....	230
Isolator, Lower Trim Panels (Canopy).....	230
Isolator, Machine Wiring Harness.....	160
Isolator, Main Frame.....	172
Isolator, Muffler.....	142
ISOLATOR, MUFFLER.....	142
Isolator, Oil Cooler Lines and Fittings.....	290
Isolator, Pilot Valve (LH) Lines.....	462
Isolator, Power Angle Blade.....	302
Isolator, Radiator.....	132
ISOLATOR, RADIATOR FAN GUARD.....	136
Isolator, Radiator Fan Guard (Canopy).....	136
Isolator, Radio.....	286
Isolator, Retractable Seat Belt (Suspension Seat) (275134 -).....	244
Isolator, Right Console.....	356
Isolator, Seat Base.....	216
ISOLATOR, SEAT BASE.....	216
Isolator, Secondary Exit (Fixed Rear Window).....	212
Isolator, Side Cover.....	276
Isolator, Suspension Cloth Seat (Cab) (275124 -).....	240
Isolator, Swing Boom Post.....	170
ISOLATOR, SWING BOOM POST.....	170
Isolator, Tool Box.....	264
Isolators (Cover).....	272
Isolators (Interior Cover).....	274
ISOLATORS, COVERS.....	272
ISOLATORS, INTERIOR COVERS.....	274
ISOLATORS, REAR CAB.....	278
J	
JOINT, CENTER.....	510
Joystick Controls, Auxiliary Function.....	362
K	
Key, Console Wiring Harness.....	164
Key, Ignition Switch.....	164
Key, Shaft Key, Camshaft and Drive Gears.....	108
Key, Shaft Key, Crankshaft, Pistons, and Flywheel.....	110
Key, Shaft Key, Fuel Injection Pump.....	116
KIT, BEARING; ENGINE CYLINDER BLOCK.....	96
KIT, CYLINDER BARREL, MAIN HYDRAULIC PUMP.....	288
KIT, CYLINDER BLOCK, SWING MOTOR.....	512
KIT, GASKET; ENGINE.....	128
Kit, Seal, Arm Cylinder (SN -275292) (- 275292).....	490
Kit, Seal, Arm Cylinder (SN -275292) (275293 -).....	492
KIT, SEAL, BLADE CYLINDER (- 275344).....	494
KIT, SEAL, BLADE CYLINDER (275344 - 275860).....	496
KIT, SEAL, BLADE CYLINDER (275361 -).....	498
Kit, Seal, Boom Cylinder (Cab) (275297 -).....	482
Kit, Seal; Boom Cylinder (Cab) (SN -275296) (- 275296).....	480
Kit, Seal, Boom Cylinder (Canopy) (275368 -).....	478
Kit, Seal; Boom Cylinder (Canopy) (SN -275367) (- 275367).....	476
KIT, SEAL; BOOM SWING CYLINDER (- 275356).....	472
Kit, Seal, Boom Swing Cylinder (275357 -).....	474
KIT, SEAL; BUCKET CLAMP CYLINDER.....	500
KIT, SEAL, BUCKET CYLINDER (- 275287).....	486
KIT, SEAL, BUCKET CYLINDER (275288 -).....	488
KIT, SEAL, MAIN HYDRAULIC PUMP.....	288
KIT, SEAL, PROPEL MOTOR (1 OF 4).....	86
KIT, SEAL, PROPEL MOTOR (2 OF 4).....	88
KIT, SEAL, PROPEL MOTOR GEARBOX (3 OF 4).....	90
KIT, SEAL, SWING MOTOR.....	512
KIT, SEAL; THUMB CYLINDER.....	500
KIT, SEAL, TRAVEL MOTOR (1 OF 4).....	86
KIT, SEAL, TRAVEL MOTOR (2 OF 4).....	88
KIT, SEAL, TRAVEL MOTOR GEARBOX (3 OF 4).....	90
KIT, SECONDARY EXIT.....	212
Knob, Dial Knob, Engine Control Console.....	158
KNOB, ENGINE CONTROL.....	158
Knob, Secondary Exit (Fixed Rear Window).....	212
KNOB, SECONDARY EXIT KIT.....	212
Knob, Standard Seat, Canopy.....	234
Knob, Suspension Cloth Seat (Cab) (- 275123).....	238
Knob, Suspension Cloth Seat (Cab) (275124 -).....	240
Knob, Suspension Vinyl Seat.....	236

Alphabetical Index - Continued

	Page		Page
L			
Label, Air Conditioner Isolators And Support	252	LINES, PILOT (HYDRAULIC RESERVOIR, SWING MOTOR, CONTROL VALVE)	466
Label, Cab Floor Parts	184	Lines, Pilot Valve (LH)	462
Label, Canopy Floor Plate	224	LINES, PILOT VALVE (RH)	464
Label, High Precision Filter	296	LINES, POWER ANGLE BLADE	460
Label, Labels and Decals (Cab and Canopy)	154	LINES, PROPEL MOTOR HYDRAULIC	82
Label, Labels and Decals (Cab)	150	LINES, SOLENOID VALVE TO POWER ANGLE BLADE SPOOL	456
Label, Labels and Decals (Canopy)	152	LINES, SOLENOID VALVE TO RESERVOIR (POWER ANGLE BLADE)	454
Label, Main Control Valve (Power Angle Blade)	410	LINES, TRAVEL CONTROLLER, CONTROL VALVE	372
Label, Pilot Valve (LH) Lines	462	LINES, TRAVEL MOTOR (POWER ANGLE BLADE)	84
Label, Power Angle Blade Decals	156	LINES, TRAVEL MOTOR HYDRAULIC	82
Label, Quick Coupler	388	Link, Bucket	386
Label, ROPS (Cab)	150	LINK, REAR COVER	266
LABELS (CAB AND CANOPY)	154	LOCK, SEAT BASE COVER	216
LABELS (CAB)	150	Lock, TK225 Series Bucket Tooth System	336
LABELS (CANOPY)	152	Long Arm 1.69m	378
Labels and Decals (Cab and Canopy)	154	LONG ARM, PINS AND BUCKET CYLINDER HOSES	380
Labels and Decals (Cab)	150	LOWER CANOPY COVERS	230
Labels and Decals (Canopy)	152	Lower Roller	78
LABELS, POWER ANGLE BLADE	156	Lower Trim Panels (Canopy)	230
Lamp, Cab Hardware	204		
Lamp, Canopy	220	M	
Lamp, Machine Wiring Harness	160	Machine Wiring Harness	160
Latch, Cab Door	198	MAIN BEARINGS	96
LATCH, CAB DOOR	198	Main Control Valve	390
LATCH, CAB INTERIOR	210	Main Control Valve (Power Angle Blade)	410
Latch, Cab Levers	210	MAIN CONTROL VALVE HYDRAULIC HOSES	470
Latch, Rear Cover	266	MAIN CONTROL VALVE, ARM SPOOL SECTION	402
LEFT-HAND CONTROL LEVER	358	MAIN CONTROL VALVE, AUXILIARY SPOOL SECTION	406
LEVER, BLADE CONTROL	346	MAIN CONTROL VALVE, AUXILIARY SPOOL SECTION (POWER ANGLE BLADE)	414
Lever, Blade Control Lever and Lines	346	MAIN CONTROL VALVE, BLADE SPOOL SECTION	400
Lever, Cab Control Levers (Auxiliary Function)	362	MAIN CONTROL VALVE, BOOM SPOOL SECTION	426
Lever, Console (LH)	358	MAIN CONTROL VALVE, BOOM SWING SPOOL SECTION	424
LEVER, ENGINE SPEED CONTROL	138	MAIN CONTROL VALVE, BUCKET SPOOL SECTION	404
Lever, Governor	118	MAIN CONTROL VALVE, INLET MID-SECTION	394
LEVER, LEFT-HAND CONTROL	358	MAIN CONTROL VALVE, INLET SECTION	392
LEVER, PILOT SHUT-OFF	358	MAIN CONTROL VALVE, POWER ANGLE BLADE SPOOL SECTION	412
LEVER, POWER ANGLE BLADE	366	MAIN CONTROL VALVE, RELIEF VALVES (POWER ANGLE BLADE)	416
Lever, Power Angle Blade Lever	366	Main Control Valve, Spool Section (Power Angle Blade)	412
LEVER, REGULATOR, FUEL INJECTION PUMP	118	MAIN CONTROL VALVE, SWING SPOOL SECTION	396
Lever, Starter	124	MAIN CONTROL, TRAVEL VALVE SPOOL SECTION	398
LEVER, TRAVEL CONTROLS (CAB)	350	Main Frame	172
LEVER, TRAVEL CONTROLS (CANOPY)	348	Main Hydraulic Pump Components	288
Lever, Travel Levers and Pedals (Cab)	350	MAIN SEAL, ENGINE FRONT	98
Lever, Travel Levers and Pedals (Canopy)	348	MAIN SEAL, ENGINE REAR	100
Levers, Control, Cab, Auxiliary Function	362	MANIFOLD, EXHAUST	106
Lift Cylinder, Power Angle Blade	300	Manifold, Exhaust Manifold, Exhaust Manifold	106
LIFT HOOK, ENGINE	102	MANIFOLD, INTAKE	104
Light Bulb Floodlamp , Lamp, Cab Hardware	204	Manifold, Intake Manifold, Intake Manifold	104
Light Bulb Floodlamp , Lamp, Canopy	220	Manifold, Main Control Valve	390
Light Bulb Floodlamp , Lamp, Machine Wiring Harness	160	MANIFOLD, MAIN CONTROL VALVE	390
Light, Boom	160	Manifold, Main Control Valve (Power Angle Blade)	410
LIGHT, FRONT CAB	204	MANIFOLD, MAIN CONTROL VALVE (POWER ANGLE BLADE)	410
LINE, CONTROL VALVE TO SWING MOTOR	470	Manifold, Manifold Kit, Rotary Manifold (Power Angle Blade)	508
LINE, FUEL INJECTION	120	MANIFOLD, PILOT CONTROLLER LINES	438
LINE, FUEL; INJECTION PUMP TO FUEL FILTER	122	Manifold, Pilot Lines	438
LINE, OIL; FUEL INJECTION PUMP	112	Manifold, Pilot Valve (RH) Lines and Manifolds	464
LINE, SWING MOTOR TO MAIN CONTROL VALVE	470	MANIFOLD, ROTARY	510
Lines And Fittings, Boom (Upper)	432	MANIFOLD, ROTARY (POWER ANGLE BLADE)	508
LINES TO ROTARY MANIFOLD	434	Manifold, Rotary Manifold	510
LINES TO SWING BOOM CYLINDER	434	Manifold, Rotary Manifold (Power Angle Blade)	508
LINES TO SWING MOTOR	434	Manifold, Solenoid Valve	422
LINES, AIR CONDITIONER	250	Manifold, Swing Motor Lines and Fittings	466
LINES, BLADE ANGLE CYLINDER (POWER ANGLE BLADE)	458	Master Pin, Track Chain, Rubber Pad Shoes (275775 -)	64
LINES, BLADE CYLINDER (POWER ANGLE BLADE)	458	MAT, CAB FLOOR	196
LINES, BOOM TO ARM	442	MAT, CANOPY FLOOR	228
LINES, CONTROL VALVE (1) (POWER ANGLE BLADE)	450	Mat, Canopy Floor Mat	228
LINES, CONTROL VALVE (2) (POWER ANGLE BLADE)	452	Mat, Floor Mat	196
LINES, CONTROL VALVE (BOOM SWING)	430	Mirror, Cab	194
LINES, CONTROL VALVE (TRAVEL)	428	Mirror, Outside Mirror For Cab or Canopy	194
LINES, CONTROL VALVE TO FILTER	436	MONITOR, CAB	166
LINES, CONTROL VALVE TO PUMP	436	MOTOR FLOW CONTROL VALVE, PROPEL	92
LINES, CONTROL VALVE TO SELECTOR VALVE	446	MOTOR FLOW CONTROL VALVE, TRAVEL	92
LINES, COOLANT; FUEL INJECTION PUMP	114	MOTOR GEARBOX COMPONENTS, PROPEL	90
LINES, FILTER TO CONTROL VALVE	436	MOTOR GEARBOX COMPONENTS, TRAVEL	90
LINES, FILTER TO SOLENOID VALVE	436	Motor, Electric Motor, Air Conditioner Duct and Cover	262
LINES, FUEL	148	Motor, Engine Starting	124
LINES, HYDRAULIC PUMP TO CONTROL VALVE	436		
LINES, PATTERN CHANGER	444		
LINES, PILOT (HYD. PUMP, CONTROL VALVE, SOLENOID, OIL FILTER)	468		

Alphabetical Index - Continued

<i>Page</i>	<i>Page</i>		
Motor, Hydraulic Motor, Swing Motor and Gear Box Mounting.....	506	PANELING, REAR ENGINE.....	282
Motor, Hydraulic Motor, Swing Motor Components.....	512	Pattern Changer.....	444
Motor, Hydraulic Motor, Travel Motor.....	80	PATTERN CHANGER COMPONENTS.....	420
Motor, Hydraulic Motor, Travel Motor Components (1 of 4).....	86	PATTERN CHANGER, ROTARY VALVE.....	444
Motor, Hydraulic Motor, Travel Motor Components (2 of 4).....	88	PEDAL, ATTACHMENT, HOSE AND FITTINGS.....	364
Motor, Hydraulic Motor, Travel Motor Components (3 of 4).....	90	Pedal, Cab Footrest.....	188
Motor, Hydraulic Motor, Travel Motor Components (4 of 4).....	92	PEDAL, CAB SWING.....	354
Motor, Pilot Valve Rotational.....	360	Pedal, Canopy Footrest.....	226
MOTOR, PROPEL.....	80	PEDAL, CANOPY SWING.....	352
MOTOR, PROPEL HYDRAULIC LINES (POWER ANGLE BLADE) ..	84	PEDAL, FOOT REST (CAB).....	188
MOTOR, PROPEL, COMPONENTS (1 OF 4).....	86	PEDAL, FOOT REST (CANOPY).....	226
MOTOR, PROPEL, COMPONENTS (2 OF 4).....	88	Pedal, Swing Pedal (Cab).....	354
MOTOR, PROPEL, COMPONENTS (3 OF 4).....	90	Pedal, Swing Pedal (Canopy).....	352
MOTOR, PROPEL, COMPONENTS (4 OF 4).....	92	PEDAL, TRAVEL CONTROLS (CAB).....	350
Motor, Starter Motor, Starter.....	124	PEDAL, TRAVEL CONTROLS (CANOPY).....	348
MOTOR, SWING, COMPONENTS.....	512	Pedal, Travel Levers and Pedals (Cab).....	350
MOTOR, TRAVEL.....	80	Pedal, Travel Levers and Pedals (Canopy).....	348
MOTOR, TRAVEL, COMPONENTS (1 OF 4).....	86	Periodic Maintenance Decal.....	150
MOTOR, TRAVEL, COMPONENTS (2 OF 4).....	88	Periodic Maintenance Decal (Canopy).....	152
MOTOR, TRAVEL, COMPONENTS (3 OF 4).....	90	Pilot Control Valve.....	368
MOTOR, TRAVEL, COMPONENTS (4 OF 4).....	92	Pilot Control Valve Components (Auxillary).....	368
MOTOR, TRAVEL; HYDRAULIC LINES (POWER ANGLE BLADE) ..	84	Pilot Control Valve Components (Blade).....	368
MOTOR, WIPER.....	200	Pilot Control Valve Components (Swing Boom).....	368
Motor, Wiper Motor Wiring Harness, Cab Hardware.....	204	PILOT CONTROL VALVE, BOOM SWING.....	440
Motor, Wiper Motor, Cab Front Window.....	200	Pilot Control Valve, Console (Components).....	360
MOUNT, ENGINE.....	144	PILOT CONTROL VALVE, RIGHT CONSOLE.....	356
MOUNTING, ALTERNATOR.....	126	Pilot Enable Control Switch.....	358
Mounting, Blade.....	300	Pilot Lines.....	438
Mounting, Mounting Parts, Cab Floor Parts.....	184	PILOT LINES (HYD. PUMP, CONTROL VALVE, SOLENOID, OIL FILTER).....	468
Mounting, Mounting Parts, Isolators (Cover).....	272	PILOT LINES (HYDRAULIC OIL RESERVOIR, SWING MOTOR, CONTROL VALVE).....	466
Mounting, Mounting Parts, Starter.....	124	PILOT LINES, POWER ANGLE BLADE.....	460
MOUNTING, SWING MOTOR.....	506	PILOT SHUT-OFF LEVER.....	358
Muffler.....	142	Pilot Valve (LH) Lines.....	462
MUFFLER, ENGINE INTAKE.....	104	PILOT VALVE (RH) LINES.....	464
Muffler, Muffler.....	142	Pilot Valve (RH) Lines and Manifolds.....	464
N		PILOT VALVE TO CONTROL VALVE HOSE.....	440
NAME PLATE, AIR CONDITIONER.....	252	PILOT VALVE, BLADE.....	346
Needle, Main Hydraulic Pump Components.....	288	Pilot Valve, Swing Device.....	360
Needle, Needle Bearing, Swing Drive Gear Box.....	514	PIN, CAB TILT ASSEMBLY.....	178
Needle, Needle Bearing, Travel Motor Components (3 of 4).....	90	Pin, Heavy Duty Bucket TF Teeth (12", 2.1 Cu Ft).....	312
Nozzle, Cab Hardware.....	204	Pin, Heavy Duty Bucket TF Teeth (18", 3.6 Cu Ft).....	320
NOZZLE, FUEL INJECTOR.....	120	Pin, Heavy Duty Bucket TF Teeth (24", 5.2 Cu Ft).....	324
Nozzle, Injection Nozzle, Fuel Injection Nozzles and Lines.....	120	Pin, Heavy Duty Bucket TF Teeth (30", 6.8 Cu Ft).....	328
Nozzle, Nozzle Holder, Fuel Injection Nozzles and Lines.....	120	Pin, Heavy Duty Bucket TK Teeth (12", 2.1 Cu Ft).....	316
O		Pin, Heavy Duty Bucket TK Teeth (18", 3.6 Cu Ft).....	322
OIL COOLER.....	132	Pin, Heavy Duty Bucket TK Teeth (24", 5.2 Cu Ft).....	326
Oil Cooler Lines and Fittings.....	290	Pin, Heavy Duty Bucket TK Teeth (30", 6.8 Cu Ft).....	330
OIL DIPSTICK.....	112	Pin, Heavy Duty Bucket TK Teeth (36", 8.3 Cu Ft).....	332
OIL FILL CAP, TIMING GEAR COVER.....	98	PIN, RUBBER PAD SHOE TRACK CHAIN (- 275774).....	62
OIL FILL CAP, VALVE COVER.....	102	PIN, RUBBER PAD SHOE TRACK CHAIN (275775 -).....	64
OIL FILTER.....	436	Pin, Swing Bearing.....	504
OIL FILTER, ENGINE.....	112	Pin, TK225 Series Bucket Tooth.....	336
OIL FILTER, INTERNAL HYDRAULIC.....	468	Pinion, Pinion Shaft, Starter.....	124
OIL LEVEL GAUGE.....	112	Pinion, Planet Pinion Carrier, Swing Drive Gear Box.....	514
OIL LINE, ENGINE.....	112	Pinion, Starter.....	124
OIL LINE, FUEL INJECTION PUMP.....	112	PINS, BOOM.....	384
OIL PAN.....	100	PINS, LONG ARM.....	380
OIL PUMP.....	112	PINS, STANDARD ARM.....	376
OIL SEAL, VALVE GUIDE.....	102	Pins, Track Chain Assembly (- 275360).....	58
OIL SENSOR.....	112	Pins, Track Chain Assembly (SN 275361-) (275361 -).....	60
OIL TANK.....	294	Pins, Track Shoes (- 275360).....	58
OIL TANK MOUNTING.....	292	Pins, Track Shoes (SN 275361-) (275361 -).....	60
OILING SYSTEM, ENGINE.....	112	PIPE COVER, MUFFLER.....	142
OPERABLE WINDOW, CAB.....	202	PIPE, BREATHER.....	104
OUTLET PIPE, ENGINE COOLANT.....	114	PIPE, EXHAUST, MUFFLER.....	142
OUTLET PIPE, ENGINE WATER.....	114	PIPE, OUTLET; ENGINE COOLANT.....	114
Outside Mirror For Cab or Canopy.....	194	PIPE, OUTLET; ENGINE WATER.....	114
OVERHAUL GASKET KIT, ENGINE.....	128	PIPES, BOOM TO ARM.....	442
OVERHEAT WARNING SENSOR.....	114	PISTON.....	110
P		Piston, Arm Cylinder Components (- 275292).....	490
PAD, TRACK CHAIN RUBBER (- 275774).....	62	Piston, Arm Cylinder Components (275293 -).....	492
PAD, TRACK CHAIN RUBBER (275775 -).....	64	Piston, Arm Section (Control Valve).....	402
PAN, OIL.....	100	Piston, Auxiliary Section (Control Valve).....	406
Panel, Cab Hardware.....	204	Piston, Auxiliary Section Control Valve (Power Angle Blade).....	414
		Piston, Blade Angle Hydraulic Cylinder Components.....	484
		Piston, Blade Cylinder Components (- 275344).....	494
		Piston, Blade Cylinder Components (275344 - 275860).....	496
		Piston, Blade Cylinder Components (275361 -).....	498
		Piston, Blade Section (Control Valve).....	400
		Piston, Boom Cylinder (Cab) (- 275296).....	480
		Piston, Boom Cylinder (Canopy) (- 275367).....	476

Alphabetical Index - Continued

Page	Page		
Piston, Boom Cylinder (Canopy) (275368 -).....	478	PUMP, FUEL INJECTION	116
Piston, Boom Cylinder Components, Cab (275297 -)	482	Pump, Fuel Injection Pump	116
Piston, Boom Swing Cylinder (- 275356).....	472	Pump, Fuel Injection Pump, Fuel Injection Pump.....	116
Piston, Boom Swing Cylinder (275357 -).....	474	Pump, Fuel Injection Pump, Governor	118
Piston, Bucket Clamp Cylinder Components.....	502	Pump, Fuel Pump, Fuel Filters	122
Piston, BUCKET CLAMP CYLINDER COMPONENTS.....	500	Pump, Fuel Pump, Fuel Tank Lines.....	148
Piston, Bucket Cylinder Components (- 275287).....	486	PUMP, HYDRAULIC.....	436
Piston, Bucket Cylinder Components (275288 -).....	488	Pump, Main Hydraulic Pump Components.....	288
Piston, Bucket Section (Control Valve).....	404	PUMP, MAIN HYDRAULIC, COMPONENTS	288
Piston, Control Valve Section (Boom Swing).....	424	Pump, Oil Pump, Engine Oil Filter, Oil Pump, and Oil Line	112
Piston, Control Valve Section (Boom).....	426	PUMP, WATER.....	114
Piston, Crankshaft, Pistons, and Flywheel.....	110	Pump, Water Pump, Water Pump	114
Piston, Fuel Injection Pump.....	116	PUSH ROD, CAMSHAFT.....	108
Piston, Inlet Section (Main Valve).....	392		
Piston, Main Control Valve, Spool Section (Power Angle Blade).....	412	Q	
Piston, Main Hydraulic Pump Components.....	288	Quick Coupler.....	388
Piston, Pilot Control Valve.....	368		
Piston, Piston Pin, Crankshaft, Pistons, and Flywheel.....	110	R	
Piston, Piston Replacement Kit, Travel Motor Components (1 of 4) ..	86	Radiator.....	132
Piston, Piston Ring Kit, Crankshaft, Pistons, and Flywheel.....	110	RADIATOR BRACKET	132
Piston, Swing Motor Components	512	RADIATOR CUSHION.....	132
Piston, Swing Section (Control Valve).....	396	RADIATOR DRAIN COCK.....	132
Piston, Travel Motor Components (1 of 4).....	86	Radiator Fan Guard (Canopy).....	136
Piston, Travel Motor Components (2 of 4).....	88	Radiator Filler Cap.....	132
Piston, Travel Section (Control Valve).....	398	RADIATOR HOSE.....	132
PLATE, (WITHOUT RADIO).....	214	RADIATOR PLATE	132
PLATE, CANOPY FLOOR PLATES	224	RADIATOR SHROUD.....	132
PLATE, CONSOLE WRIST REST.....	186	RADIATOR TUBE TO DRAIN COCK	132
PLATE, FLOOR PARTS (CAB).....	184	Radiator, Radiator.....	132
PLATE, RADIATOR.....	132	Radiator, Radiator Hose, Air Conditioner Isolators And Support.....	252
PLUG, DRAIN; ENGINE OIL.....	100	Radiator, Radiator Hose, Radiator.....	132
PLUG, DRAIN; WATER PUMP.....	114	Radio	286
PLUG, GLOW; ENGINE CYLINDER HEAD	102	Radio, Radio.....	286
Plunger, Arm Cylinder Components (275293 -).....	492	RADIO, WITHOUT, BRACKET	214
Plunger, Swing Motor Pilot Valve Components.....	360	Rail, Standard Seat, Canopy.....	234
Plunger, Travel Pilot Control Valve Components.....	370	REAR CAB ISOLATORS.....	278
Potentiometer, Engine Control Console	158	Rear Cover	266
POTENTIOMETER, ENGINE CONTROL CONSOLE.....	158	REAR COVER.....	266
Power Angle Blade.....	302	Rear Cover Hinge.....	284
POWER ANGLE BLADE AUXILIARY SPOOL SECTION, MAIN CONTROL VALVE	414	REAR MAIN SEAL, ENGINE.....	100
Power Angle Blade Decals.....	156	Receiver Dryer, Receiver-Dryer, Air Conditioner Condenser (- 275163).....	254
POWER ANGLE BLADE DECALS.....	156	Receiver Dryer, Receiver-Dryer, Air Conditioner Condenser (275164 -).....	256
Power Angle Blade Frame.....	304	Receiver-Dryer, Air Conditioner (- 275163)	254
Power Angle Blade Lever.....	366	Receiver-Dryer, Air Conditioner (275164 -).....	256
POWER ANGLE BLADE RELIEF VALVES.....	416	Receiver-Dryer, Air Conditioner Condenser (275164 -).....	256
POWER ANGLE BLADE SPOOL SECTION, MAIN CONTROL VALVE	412	Reflector, Labels and Decals (Cab).....	150
POWER ANGLE BLADE, BLADE ANGLE CYLINDER.....	308	Reflector, Labels and Decals (Canopy).....	152
POWER ANGLE BLADE, BLADE ANGLE CYLINDER COMPONENTS	484	REFRIGERANT HOSE, AIR CONDITIONER	248
POWER ANGLE BLADE, BLADE ANGLE CYLINDER GUARD.....	302	REGULATOR, ALTERNATOR VOLTAGE	126
POWER ANGLE BLADE, BLADE CYLINDER GUARD	306	Relay, Air Conditioner.....	246
POWER ANGLE BLADE, BLADE CYLINDERS HYDRAULIC LINES.....	458	Relay, Alternator.....	126
POWER ANGLE BLADE, TRAVEL MOTOR HYDRAULIC LINES.....	84	RELAY, ALTERNATOR.....	126
Power Cord, Engine Coolant Heater	130	Relay, Battery Compartment	162
PRESSURE SENSOR, CONSOLE WIRING HARNESS	164	Relay, Console Wiring Harness.....	164
PROPEL LINES, CONTROL VALVE	428	RELAY, CONSOLE WIRING HARNESS	164
PROPEL MOTOR.....	80	RELAY, GLOW	162
PROPEL MOTOR COMPONENTS (1 OF 4)	86	RELAY, POWER ANGLE BLADE.....	366
PROPEL MOTOR COMPONENTS (2 OF 4)	88	Relay, Power Angle Blade Lever.....	366
PROPEL MOTOR COMPONENTS (3 OF 4).....	90	RELAY, SAFETY, CONSOLE WIRING HARNESS	164
PROPEL MOTOR COMPONENTS (4 OF 4).....	92	RELAYS, AIR CONDITIONER	246
Propel Motor Covers (275361 -).....	48	RELIEF VALVE, ARM SPOOL SECTION	402
Propel Motor Covers (SN -275360) (- 275360).....	46	RELIEF VALVE, AUXILIARY SPOOL SECTION.....	406
PROPEL MOTOR FLOW CONTROL VALVE.....	92	RELIEF VALVE, BOOM SPOOL SECTION	426
PROPEL MOTOR GEARBOX COMPONENTS	90	RELIEF VALVE, BOOM SWING SPOOL SECTION	424
PROPEL MOTOR HYDRAULIC LINES	82	RELIEF VALVE, BUCKET SPOOL SECTION.....	404
PROPEL MOTOR HYDRAULIC LINES (POWER ANGLE BLADE).....	84	RELIEF VALVE, MAIN CONTROL VALVE INLET SECTION	392
Propel Pilot Control Valve Components	370	RELIEF VALVE, POWER ANGLE BLADE	416
PROTECTOR, BOOM LINE.....	448	Relief Valves (Power Angle Blade).....	416
Pulley, Air Conditioner Compressor.....	258	Reservoir, Flywheel Housing and Oil Pan	100
Pulley, Alternator	126	RESERVOIR, HYDRAULIC.....	292
PULLEY, ALTERNATOR.....	126	RESERVOIR, HYDRAULIC OIL.....	294
PULLEY, COMPRESSOR	258	Reservoir, Hydraulic Reservoir, Hydraulic Oil Reservoir	294
Pulley, Crankshaft, Pistons, and Flywheel.....	110	Reservoir, Hydraulic Reservoir, Hydraulic Reservoir Installation.....	292
Pulley, Water Pump.....	114	RESISTOR, AIR CONDITIONER	248
PULLEY, WATER PUMP	114	Resistor, Air Conditioner Components	248
PUMP COVER (ENGINE MOUNT).....	144	Retainer, Arm Section (Control Valve).....	402
Pump, Control Valve Lines (Pump & Filter).....	436		
PUMP, ENGINE OIL.....	112		
PUMP, FUEL	122, 148		

Alphabetical Index - Continued

<i>Page</i>	<i>Page</i>		
Retainer, Auxiliary Section (Control Valve).....	406	RUBBER PAD SHOE TRACK CHAIN ASSEMBLY (275775 -).....	64
Retainer, Auxiliary Section Control Valve (Power Angle Blade).....	414	Rubber Track Adjuster (SN -275360) (- 275360).....	70
Retainer, Blade Section (Control Valve).....	400	Rubber Track Adjuster (SN 275361-) (275361 -).....	72
Retainer, Bucket Section (Control Valve).....	404	Rubber Tracks.....	44
Retainer, Control Valve Section (Boom Swing).....	424		
Retainer, Control Valve Section (Boom).....	426	S	
Retainer, Cylinder Head, Rocker Arms, and Valves.....	102	SAFETY RELAY, CONSOLE WIRING HARNESS.....	164
Retainer, Fuel Injection Nozzles and Lines.....	120	Scraper, Scraper Ring, Boom Cylinder (Cab) (- 275296).....	480
Retainer, Governor.....	118	Scraper, Scraper Ring, Boom Cylinder (Canopy) (- 275367).....	476
Retainer, Inlet Section (Main Valve).....	392	SEAL FOR ENGINE COMPARTMENT.....	282
Retainer, Main Control Valve, Spool Section (Power Angle Blade).....	412	Seal Kit, Arm Cylinder (SN -275292) (- 275292).....	490
Retainer, Main Hydraulic Pump Components.....	288	Seal Kit, Arm Cylinder (SN -275292) (275293 -).....	492
Retainer, Retainer Kit, Cylinder Head, Rocker Arms, and Valves.....	102	SEAL KIT, BLADE CYLINDER (- 275344).....	494
Retainer, Swing Motor Components.....	512	SEAL KIT, BLADE CYLINDER (275344 - 275860).....	496
Retainer, Swing Section (Control Valve).....	396	SEAL KIT, BLADE CYLINDER (275361 -).....	498
Retainer, Track Chain Assembly, Rubber Pad Shoe (275775 -).....	64	Seal Kit, Boom Cylinder (Cab) (275297 -).....	482
Retainer, Travel Section (Control Valve).....	398	Seal Kit, Boom Cylinder (Cab) (SN -275296) (- 275296).....	480
Retractable Seat Belt (76 mm) (3 in.) Wide.....	242	Seal Kit, Boom Cylinder (Canopy) (275368 -).....	478
Retractable Seat Belt (Suspension Seat) (275134 -).....	244	Seal Kit, Boom Cylinder (Canopy) (SN -275367) (- 275367).....	476
Retractable Seat Belt 76mm (3 in.).....	242	SEAL KIT, BOOM SWING CYLINDER (- 275356).....	472
Right Console.....	356	Seal Kit, Boom Swing Cylinder (275357 -).....	474
RIGHT CONSOLE COVER AND PILOT CONTROL VALVE.....	356	SEAL KIT, BUCKET CLAMP CYLINDER.....	500
RIGHT COVER, INTERIOR.....	190	SEAL KIT, BUCKET CYLINDER (- 275287).....	486
RIGHT LOWER WINDOW, CAB.....	208	SEAL KIT, BUCKET CYLINDER (275288 -).....	488
RING GEAR.....	110	SEAL KIT, MAIN HYDRAULIC PUMP.....	288
RING SET, PISTONS.....	110	SEAL KIT, PROPEL MOTOR (1 OF 4).....	86
ROD BEARINGS.....	110	SEAL KIT, PROPEL MOTOR (2 OF 4).....	88
Rod, Arm Cylinder Components (275293 -).....	492	SEAL KIT, PROPEL MOTOR GEARBOX.....	90
Rod, Blade Cylinder Components (- 275344).....	494	SEAL KIT, ROTARY VALVE.....	420
Rod, Blade Cylinder Components (275344 - 275860).....	496	SEAL KIT, SWING MOTOR.....	512
Rod, Blade Cylinder Components (275361 -).....	498	SEAL KIT, THUMB CYLINDER.....	500
Rod, Boom Cylinder (Cab) (- 275296).....	480	SEAL KIT, TRAVEL MOTOR (1 OF 4).....	86
Rod, Boom Cylinder (Canopy) (- 275367).....	476	SEAL KIT, TRAVEL MOTOR (2 OF 4).....	88
Rod, Boom Cylinder (Canopy) (275368 -).....	478	SEAL KIT, TRAVEL MOTOR GEARBOX.....	90
Rod, Boom Cylinder Components, Cab (275297 -).....	482	Seal, Cab Door Hinge Area.....	198
Rod, Boom Swing Cylinder (- 275356).....	472	SEAL, CRANKSHAFT; ENGINE REAR.....	100
ROD, BUCKET CLAMP CYLINDER.....	500	Seal, Door, Cab Middle.....	198
Rod, Bucket Clamp Cylinder Components.....	502	SEAL, OIL; VALVE GUIDE.....	102
Rod, BUCKET CLAMP CYLINDER COMPONENTS.....	500	SEAL, SECONDARY EXIT KIT.....	212
Rod, Bucket Cylinder Components (275288 -).....	488	Seal, Swing Bearing.....	504
Rod, Cab Door.....	198	Seat Base.....	216
Rod, Connecting Rod, Crankshaft, Pistons, and Flywheel.....	110	Seat Belt.....	232
Rod, Hydr. Cylinder Rod Guide, Bucket Clamp Cylinder Components.....	502	Seat Belt, Retractable (76 mm) (3 in.) Wide.....	242
Rod, Hydr. Cylinder Rod Guide, BUCKET CLAMP CYLINDER COMPONENTS.....	500	Seat Belt, Retractable, Suspension Seat (SN 275134-) (275134 -).....	244
Rod, Hydraulic Cylinder Rod, Arm Cylinder Components (- 275292).....	490	Seat, Cab Hardware.....	204
Rod, Hydraulic Cylinder Rod, Blade Angle Hydraulic Cylinder Components.....	484	Seat, Cloth.....	234
Rod, Hydraulic Cylinder Rod, Boom Swing Cylinder (275357 -).....	474	Seat, Seat Belt, Retractable Seat Belt (Suspension Seat) (275134 -).....	244
Rod, Hydraulic Cylinder Rod, Bucket Cylinder Components (- 275287).....	486	Seat, Seat Belt, Retractable Seat Belt 76mm (3 in.).....	242
Rod, Hydraulic Oil Reservoir.....	294	Seat, Seat Belt, Seat Belt.....	232
Rod, Main Hydraulic Pump Components.....	288	Seat, Seat Belt, Suspension Cloth Seat (Cab) (- 275123).....	238
Rod, Push Rod, Camshaft and Drive Gears.....	108	Seat, Seat Belt, Suspension Cloth Seat (Cab) (275124 -).....	240
Rod, Track Adjuster (Rubber) (- 275360).....	70	Seat, Seat Kit, Standard Seat, Canopy.....	234
Rod, Track Adjuster (Rubber) (275361 -).....	72	Seat, Selector Valve (Power Angle Blade).....	418
Rod, Track Adjuster (Steel).....	74	Seat, Standard Seat, Canopy.....	234
Rod, Track Adjuster (Steel) (275361 -).....	76	SEAT, SUSPENSION CAB CLOTH (- 275123).....	238
RODS, CONNECTING.....	110	Seat, Suspension Cab Cloth (275124 -).....	240
Roller, Cab Front Window.....	200	SEAT, SUSPENSION CANOPY VINYL.....	236
ROLLER, LOWER.....	78	Seat, Suspension Cloth Seat (Cab) (- 275123).....	238
Roller, Lower Roller.....	78	Seat, Suspension Cloth Seat (Cab) (275124 -).....	240
Roller, Tapered Roller Bearing, Swing Drive Gear Box.....	514	Seat, Suspension Vinyl Seat.....	236
Roller, Track Frame (275361 -).....	48	Seat, Valve Seat Insert, Fuel Injection Nozzles and Lines.....	120
Roller, Travel Motor Components (3 of 4).....	90	Seat, Valve Seat, Arm Section (Control Valve).....	402
Roller, Upper (SN -275360) (- 275360).....	54	Seat, Valve Seat, Blade Section (Control Valve).....	400
Roller, Upper (SN 275361-) (275361 -).....	56	Seat, Valve Seat, Bucket Section (Control Valve).....	404
Roller, Upper Roller (- 275360).....	54	Seat, Valve Seat, Control Valve Section (Boom Swing).....	424
Roller, Upper Roller (275361 -).....	56	Seat, Valve Seat, Control Valve Section (Boom).....	426
ROPS Decal (Canopy).....	152	Seat, Valve Seat, Cylinder Head, Rocker Arms, and Valves.....	102
ROPS Label (Cab).....	150	Seat, Valve Seat, Main Control Valve, Spool Section (Power Angle Blade).....	412
Rotary Manifold.....	510	Seat, Valve Seat, Swing Section (Control Valve).....	396
Rotary Manifold (Power Angle Blade).....	508	Seat, Valve Seat, Travel Section (Control Valve).....	398
Rotary Valve.....	420	Secondary Exit (Fixed Rear Window).....	212
ROTARY VALVE (COMPONENTS).....	420	SECONDARY EXIT KIT.....	212
ROTARY VALVE, 2-WAY.....	446	SECTION, ARM SPOOL.....	402
ROTARY VALVE, PATTERN CHANGER.....	444	SECTION, AUXILIARY SPOOL.....	406
Rotational Motor Pilot Valve.....	360	SECTION, AUXILIARY SPOOL (POWER ANGLE BLADE).....	414
Rotor, Alternator.....	126	SECTION, BLADE SPOOL.....	400
Rotor, Rotary Manifold (Power Angle Blade).....	508	SECTION, BOOM SPOOL.....	426
RUBBER PAD SHOE TRACK CHAIN ASSEMBLY (- 275774).....	62	SECTION, BOOM SWING SPOOL.....	424

Alphabetical Index - Continued

	Page		Page
SECTION, BUCKET SPOOL.....	404	Sleeve, Oil Cooler Lines and Fittings	290
SECTION, POWER ANGLE BLADE SPOOL.....	412	Sleeve, Pilot Lines	438
SECTION, SWING SPOOL.....	396	Sleeve, Pilot Valve (LH) Lines	462
SECTION, TRAVEL SPOOL.....	398	Sleeve, Pilot Valve (RH) Lines and Manifolds	464
Selector Valve (Power Angle Blade).....	418	Sleeve, Radiator	132
SELECTOR VALVE (POWER ANGLE BLADE).....	460	Sleeve, Swing Motor Pilot Valve Components	360
SELECTOR VALVE COMPONENTS (POWER ANGLE BLADE).....	418	Sleeve, Travel Pilot Control Valve Components	370
SELECTOR VALVE TO CONTROL VALVE LINES	446	Solenoid Valve.....	422
Sender, Sensor, Console Wiring Harness.....	164	SOLENOID VALVE (COMPONENTS)(TWO-WAY).....	422
Sender, Sensor, ENGINE SPEED CONTROL LINKAGE.....	138	Solenoid Valve (Power Angle Blade).....	408
Sender, Sensor, Water Pump.....	114	Solenoid Valve Control Levers, Auxiliary Function	362
Sensor Sender , Rotary Switch, Console Wiring Harness.....	164	Solenoid Valve Lines To Hydraulic Reservoir (Power Angle Blade) ..	454
Sensor Sender , Switch, Cab Floor Parts.....	184	Solenoid Valve Lines To Power Angle Blade Spool.....	456
Sensor Sender , Switch, Cab Front Window	200	SOLENOID VALVE, AIR CONDITIONER.....	260
Sensor Sender , Switch, Console (LH).....	358	Solenoid Valve, Cab Control Levers, Auxiliary Function	362
Sensor Sender , Switch, Console Wiring Harness.....	164	SOLENOID, ENGINE STOP, FUEL INJECTION PUMP	118
Sensor Sender , Switch, Engine Oil Filter, Oil Pump, and Oil Line.....	112	Solenoid, Fuel Injection Pump Shutoff	118
Sensor Sender , Switch, Water Pump.....	114	Solenoid, Governor.....	118
Sensor, Console Wiring Harness.....	164	Solenoid, Solenoid Hydraulic Valve, Solenoid Valve.....	422
Sensor, ENGINE SPEED CONTROL LINKAGE	138	Solenoid, Solenoid Hydraulic Valve, Solenoid Valve (Power Angle Blade).....	408
SENSOR, ENGINE TEMPERATURE.....	114	Solenoid, Solenoid Valve.....	422
SENSOR, OIL.....	112	Solenoid, Solenoid Valve, Air Conditioner Solenoid and Lines	260
SENSOR, OVERHEAT WARNING.....	114	Solenoid, Solenoid Valve, Cab Control Levers (Auxiliary Function) ..	362
SENSOR, PRESSURE, CONSOLE WIRING HARNESS	164	Solenoid, Solenoid Valve, Solenoid Valve	422
SENSOR, PRESSURE, ENGINE SPEED.....	138	Solenoid, Solenoid Valve, Solenoid Valve (Power Angle Blade).....	408
Sensor, Water Pump	114	Solenoid, Solenoid Valve, Solenoid Valve Lines To Hydraulic Reservoir (Power Angle Blade).....	454
Separator, Fuel Filters.....	122	Solenoid, Solenoid Valve, Swing Motor Lines and Fittings.....	466
SEPARATOR, FUEL TANK.....	148	SPEAKER.....	204
Separator, Fuel Tank Lines.....	148	Speaker, Cab Hardware	204
Shaft, Camshaft and Drive Gears.....	108	SPEED CONTROL CABLE AND LEVER, ENGINE.....	138
Shaft, Console (LH).....	358	SPEED CONTROL LINKAGE, ENGINE	138
Shaft, Cylinder Head, Rocker Arms, and Valves	102	SPEED CONTROL WIRE HARNESS	138
Shaft, Front Idler (- 275360).....	50	Spindle, Rotary Valve	420
Shaft, Front Idler (275361 -).....	52	SPOOL SECTION, MAIN CONTROL VALVE	390
Shaft, Lower Roller.....	78	Spool, Pilot Control Valve	368
Shaft, Main Hydraulic Pump Components.....	288	Spool, Solenoid Valve.....	422
Shaft, Pinion Shaft, Starter.....	124	Spool, Solenoid Valve (Power Angle Blade).....	408
SHAFT, ROCKER ARM.....	102	Spool, Swing Motor Pilot Valve Components	360
Shaft, Rocker Arm Shaft, Cylinder Head, Rocker Arms, and Valves.....	102	Spool, Travel Motor Components (1 of 4)	86
Shaft, Rotary Manifold.....	510	Spool, Travel Motor Components (4 of 4)	92
Shaft, Rotary Manifold (Power Angle Blade).....	508	Spool, Valve Spool, Arm Section (Control Valve).....	402
Shaft, Shaft Key, Camshaft and Drive Gears	108	Spool, Valve Spool, Auxiliary Section (Control Valve).....	406
Shaft, Shaft Key, Crankshaft, Pistons, and Flywheel	110	Spool, Valve Spool, Auxiliary Section Control Valve (Power Angle Blade).....	414
Shaft, Shaft Key, Fuel Injection Pump.....	116	Spool, Valve Spool, Blade Section (Control Valve)	400
Shaft, Solenoid Valve	422	Spool, Valve Spool, Bucket Section (Control Valve).....	404
Shaft, Solenoid Valve (Power Angle Blade)	408	Spool, Valve Spool, Control Valve Section (Boom Swing)	424
Shaft, Swing Drive Gear Box.....	514	Spool, Valve Spool, Control Valve Section (Boom)	426
Shaft, Swing Motor Components.....	512	Spool, Valve Spool, Inlet Section (Main Valve).....	392
Shaft, Travel Motor Components (2 of 4)	88	Spool, Valve Spool, Main Control Valve, Spool Section (Power Angle Blade).....	412
Shaft, Upper Roller (- 275360)	54	Spool, Valve Spool, Swing Section (Control Valve).....	396
Shank, TF Tooth, Heavy Duty Bucket (12", 2.1 Cu Ft).....	312	Spool, Valve Spool, Travel Section (Control Valve).....	398
Shank, TF Tooth, Heavy Duty Bucket (18", 3.6 Cu Ft).....	320	SPRING, VALVE	102
Shank, TF Tooth, Heavy Duty Bucket (24", 5.2 Cu Ft).....	324	Sprocket, Drive Sprocket, Travel Motor.....	80
Shank, TF Tooth, Heavy Duty Bucket (30", 6.8 Cu Ft).....	328	SPROCKET, PROPEL MOTOR	80
Shank, TK Tooth, Heavy Duty Bucket (12", 2.1 Cu Ft).....	316	SPROCKET, TRAVEL MOTOR	80
Shank, TK Tooth, Heavy Duty Bucket (18", 3.6 Cu Ft).....	322	STANDARD AIR CLEANER	140
Shank, TK Tooth, Heavy Duty Bucket (24", 5.2 Cu Ft).....	326	Standard Arm 1.38m	374
Shank, TK Tooth, Heavy Duty Bucket (30", 6.8 Cu Ft).....	330	STANDARD ARM, PINS AND BUCKET CYLINDER HOSES.....	376
Shank, TK Tooth, Heavy Duty Bucket (36", 8.3 Cu Ft).....	332	Standard Seat, Canopy	234
SHIMS, SWING BOOM POST	170	Starter.....	124
SHOE, RUBBER PAD TRACK (- 275774)	62	STARTER RING GEAR.....	110
SHOE, RUBBER PAD TRACK (275775 -)	64	Starter, Starter Motor, Starter	124
Shoe, Track Chain Assembly (- 275360).....	58	Steel Track Adjuster	74
Shoe, Track Chain Assembly (275361 -)	60	Steel Track Adjuster (SN 275361-) (275361 -)	76
Shoe, Track Chain Assembly, Rubber Pad Shoe (275775 -)	64	Stop, Arm Bushings, Pins, Bucket Link and Bucket Cylinder Lines ..	376
Shoe, Triple Bar Shoe, Track Chain Assembly, Rubber Pad Shoe (275775 -).....	64	Stop, Arm Bushings, Pins, Bucket Link and Bucket Cylinder Lines (Long Arm).....	380
Shoes, Track Chain Assembly (- 275360).....	58	Stop, Cab Floor Plate Hardware.....	180
Shoes, Track Chain Assembly (SN 275361-) (275361 -)	60	Stop, Cab Hardware	204
Shroud, Radiator	132	Stop, Cab Levers.....	210
SHROUD, RADIATOR.....	132	Stop, Front Lower Window	208
Side Cover.....	276	Stop, Main Frame	172
SIDE COVER	276	Stop, Rear Cover Hinge	284
Side Covers (1).....	268	Strainer, Fuel Tank.....	146
Side Covers (2).....	270	Strainer, Hydraulic Oil Reservoir	294
Sleeve, Blade Pilot Lines (Power Angle Blade).....	460	Strainer, Inlet Mid-Section Control Valve	394
Sleeve, Boom Hose Protectors	448	Strainer, Inlet Section (Main Valve)	392
Sleeve, Cab Control Levers (Auxiliary Function).....	362	Strap, Solenoid Valve	422
Sleeve, Console (LH).....	358	Striker, Cab Door.....	198
Sleeve, Control Valve Lines.....	434		
Sleeve, Control Valve Lines To Selector Valve.....	446		
Sleeve, Control Valve Section (Boom)	426		
Sleeve, Main Hydraulic Pump Components.....	288		

Alphabetical Index - Continued

<i>Page</i>	<i>Page</i>		
Striker, Cab Hardware.....	204	Tooth, Heavy Duty Bucket TF (30", 6.8 Cu Ft).....	328
SUCTION FILTER, HYDRAULIC OIL RESERVOIR.....	294	Tooth, Heavy Duty Bucket TK (12 In 2.1 Cu Ft).....	316
SUPPORT, AIR CONDITIONER.....	252	Tooth, Heavy Duty Bucket TK (18", 3.6 Cu Ft).....	322
Support, Blade.....	300	Tooth, Heavy Duty Bucket TK (24", 5.2 Cu Ft).....	326
SUPPORT, CANOPY INTERIOR.....	218	Tooth, Heavy Duty Bucket TK (30", 6.8 Cu Ft).....	330
Suspension Cloth Seat (Cab) (- 275123).....	238	Tooth, Heavy Duty Bucket TK (36", 8.3 Cu Ft).....	332
Suspension Cloth Seat (Cab) (275124 -).....	240	Track Adjuster (Rubber) (- 275360).....	70
SUSPENSION SEAT, CAB CLOTH (- 275123).....	238	Track Adjuster (Rubber) (275361 -).....	72
Suspension Seat, Cab Cloth (275124 -).....	240	Track Adjuster (Steel).....	74
SUSPENSION SEAT, CANOPY VINYL.....	236	Track Adjuster (Steel) (275361 -).....	76
Suspension Seat, Retractable Seat Belt (SN 275134-) (275134 -).....	244	Track Adjuster, Rubber (SN -275360) (- 275360).....	70
Suspension Vinyl Seat.....	236	Track Adjuster, Rubber (SN 275361-) (275361 -).....	72
Swing Bearing.....	504	Track Adjuster, Steel.....	74
Swing Bearing Seal.....	504	Track Adjuster, Steel (SN 275361-) (275361 -).....	76
SWING BOOM CYLINDER COVER.....	280	TRACK ASSEMBLY WITH RUBBER PAD SHOES (- 275774).....	62
Swing Boom Pilot Control Valve Components.....	368	TRACK ASSEMBLY WITH RUBBER PAD SHOES (275775 -).....	64
Swing Boom Post.....	170	Track Chain Assembly (- 275360).....	58
SWING BOOM POST COLLAR.....	170	Track Chain Assembly (275361 -).....	60
SWING BOOM POST SHIMS.....	170	TRACK CHAIN ASSEMBLY, RUBBER PAD SHOE (- 275774).....	62
SWING CYLINDER, BOOM (- 275356).....	472	Track Chain Assembly, Rubber Pad Shoe (275775 -).....	64
Swing Cylinder, Boom (275357 -).....	474	Track Frame (- 275360).....	46
SWING DEVICE.....	506	Track Frame (275361 -).....	48
Swing Drive Gear Box.....	514	Track Frame Covers (275361 -).....	48
SWING DRIVE GEARBOX.....	514	Track Frame Covers (SN -275360) (- 275360).....	46
SWING GEAR BOX (PILOT LINES).....	466	Track Frame Hardware.....	42
Swing Motor and Gear Box Mounting.....	506	TRACK FRAME ROLLER, LOWER.....	78
Swing Motor Components.....	512	Track Frame Roller, Upper (SN -275360) (- 275360).....	54
Swing Motor Lines and Fittings.....	466	Track Frame Roller, Upper (SN 275361-) (275361 -).....	56
SWING MOTOR MOUNTING.....	506	Track Guards (Steel) (- 275360).....	66
Swing Motor Pilot Valve Components.....	360	Track Guards (Steel) (275361 -).....	68
SWING MOTOR SEAL KIT.....	512	TRACK LINK, RUBBER PAD SHOES (- 275774).....	62
Swing Pedal (Cab).....	354	TRACK LINK, RUBBER PAD SHOES (275775 -).....	64
Swing Pedal (Canopy).....	352	TRACK PIN, RUBBER PAD SHOES (- 275774).....	62
Swing Section (Control Valve).....	396	TRACK PIN, RUBBER PAD SHOES (275775 -).....	64
Switch, Auto Idle.....	164	TRACK SHOES (RUBBER).....	44
Switch, Cab Floor Parts.....	184	TRACKS (RUBBER).....	44
Switch, Cab Front Window.....	200	Travel Alarm.....	160
Switch, Cab Tilt.....	164	Travel Alarm Cancel Switch.....	164
Switch, Console (LH).....	358	Travel Alarm Controller.....	164
Switch, Console Wiring Harness.....	164	TRAVEL CONTROL VALVE.....	372
SWITCH, CONSOLE WIRING HARNESS.....	164	TRAVEL CONTROL VALVE HOSES.....	428
Switch, Engine Oil Filter, Oil Pump, and Oil Line.....	112	TRAVEL CONTROL VALVE LINES.....	428
SWITCH, FLOOR PARTS (CAB).....	184	TRAVEL CONTROLS (CAB).....	350
Switch, Freeze.....	248	TRAVEL CONTROLS (CANOPY).....	348
SWITCH, FRONT WINDOW.....	200	Travel Levers and Pedals (Cab).....	350
Switch, Ignition.....	164	Travel Levers and Pedals (Canopy).....	348
SWITCH, OIL SENSOR.....	112	Travel Motor.....	80
SWITCH, OVERHEAT WARNING.....	114	Travel Motor Components (1 of 4).....	86
Switch, Pilot Enable Control.....	358	Travel Motor Components (2 of 4).....	88
Switch, Rotary Switch, Console Wiring Harness.....	164	Travel Motor Components (3 of 4).....	90
Switch, Travel Alarm Cancel.....	164	TRAVEL MOTOR COMPONENTS (3 OF 4).....	90
Switch, Travel Speed.....	164	Travel Motor Components (4 of 4).....	92
Switch, Water Pump.....	114	TRAVEL MOTOR COMPONENTS (4 OF 4).....	92
Switch, Work Lights.....	164	Travel Motor Covers (275361 -).....	48
		Travel Motor Covers (SN -275360) (- 275360).....	46
T		TRAVEL MOTOR FLOW CONTROL VALVE.....	92
TANK FLOAT, FUEL.....	162	TRAVEL MOTOR GEARBOX COMPONENTS.....	90
TANK, FUEL.....	146	Travel Motor Hydraulic Lines.....	82
Tank, Fuel Tank, Fuel Tank.....	146	Travel Motor Hydraulic Lines (Power Angle Blade).....	84
TANK, OIL.....	294	Travel Pilot Control Valve Components.....	370
TANK, OIL, MOUNTING.....	292	Travel Section (Control Valve).....	398
Tank, Radiator.....	132	Travel Speed Switch.....	164
TANK, WATER, RADIATOR.....	132	TRAVEL WARNING ALARM, MONITOR.....	166
TAPPET, CAMSHAFT.....	108	Tube, Air Conditioner Compressor.....	258
TEMPERATURE SENSOR, ENGINE.....	114	Tube, Air Conditioner Condenser (- 275163).....	254
THERMOSTAT.....	114	Tube, Air Conditioner Condenser (275164 -).....	256
Thermostat, Water Pump.....	114	Tube, Air Conditioner Lines.....	250
THUMB CYLINDER COMPONENTS.....	500	Tube, Arm Cylinder Components (275293 -).....	492
TILT ASSEMBLY, CAB.....	178	Tube, Battery Compartment.....	162
TIMER, CONSOLE WIRING HARNESS.....	164	Tube, Boom Cylinder (Cab) (- 275296).....	480
Timing Gear Cover.....	98	Tube, Boom Cylinder (Canopy) (- 275367).....	476
TIMING GEAR, CAMSHAFT.....	108	Tube, Boom Cylinder (Canopy) (275368 -).....	478
TIMING GEAR, CRANKSHAFT.....	110	Tube, Boom Cylinder Components, Cab (275297 -).....	482
TK225 Series Bucket Tooth System.....	336	TUBE, BREATHER.....	104
Tool Box.....	264	Tube, Fuel Tank Lines.....	148
TOOLBOX.....	264	Tube, Main Frame.....	172
Toolbox, Tool Box.....	264	TUBE, RADIATOR TO DRAIN COCK.....	132
Tooth, Bucket, TK225 Series.....	336	Tube, Structural Tube, Air Conditioner Condenser (- 275163).....	254
Tooth, Heavy Duty Bucket (18 in. 3.6 cu ft).....	320	Tube, Structural Tube, Air Conditioner Condenser (275164 -).....	256
Tooth, Heavy Duty Bucket TF (12 In 2.1 Cu Ft).....	312	Tube, Structural Tube, Fuel Tank Lines.....	148
Tooth, Heavy Duty Bucket TF (24 In. 5.2 Cu Ft).....	324	TWO-WAY SOLENOID VALVE (COMPONENTS).....	422

Alphabetical Index - Continued

	Page		Page
U			
Undercarriage Covers (275361 -).....	48	Valve, Swing Boom Pilot Control, Components.....	368
Undercarriage Covers (SN -275360) (- 275360).....	46	Valve, Swing Device Pilot.....	360
Upper Roller (- 275360).....	54	VALVE, TRAVEL CONTROL.....	372
Upper Roller (275361 -).....	56	VALVE, TRAVEL MOTOR FLOW CONTROL.....	92
		Valve, Travel Pilot Control Components.....	370
		VOLTAGE REGULATOR, ALTERNATOR.....	126
V			
V BELT, AIR CONDITIONER.....	258	W	
V-Belt, Air Conditioner Compressor.....	258	WATER HOSE, AIR CONDITIONER.....	250
V-Belt, Water Pump.....	114	WATER HOSE, RADIATOR.....	132
VALVE COVER.....	102	WATER LINES, FUEL INJECTION PUMP.....	114
VALVE GUIDE OIL SEAL.....	102	WATER OULET PIPE, ENGINE.....	114
VALVE GUIDE, CYLINDER HEAD.....	102	Water Pump.....	114
VALVE SEAT, ENGINE CYLINDER HEAD.....	102	WATER SEPARATOR, FUEL FILTER.....	122
VALVE SPRING.....	102	WATER SEPARATOR, FUEL TANK.....	148
VALVE STACK, MAIN CONTROL VALVE.....	390	WATER TANK, RADIATOR.....	132
VALVE STACK, MAIN CONTROL VALVE (POWER ANGLE BLADE).....	410	WEATHER STRIP, CAB DOOR.....	206
Valve, Auxiliary Pilot Control, Components.....	368	WEATHER STRIPING FOR ENGINE COMPARTMENT.....	282
Valve, Blade Pilot Control, Components.....	368	WEATHER STRIPPING, COVERS.....	272
VALVE, CHECK; ARM SPOOL SECTION.....	402	Weatherstrip, Cab.....	192
VALVE, CHECK; AUXILIARY SPOOL SECTION.....	406	Weatherstrip, Cab Door.....	198
VALVE, CHECK; AUXILIARY SPOOL SECTION (POWER ANGLE BLADE).....	414	Weatherstrip, Cab Front Window.....	200
VALVE, CHECK; BLADE SPOOL SECTION.....	400	Weatherstrip, Cylinder Guard (Boom Swing).....	280
VALVE, CHECK; BOOM SPOOL SECTION.....	426	Weatherstrip, Isolators (Cover).....	272
VALVE, CHECK; BOOM SWING SPOOL SECTION.....	424	Weatherstrip, Isolators (Interior Cover).....	274
VALVE, CHECK; BUCKET SPOOL SECTION.....	404	WEATHERSTRIP, SWING BOOM CYLINDER COVER.....	280
VALVE, CHECK; POWER ANGLE BLADE SPOOL SECTION.....	412	WINDOW, CAB DOOR.....	198
VALVE, CHECK; SWING MOTOR.....	512	WINDOW, CAB FRONT.....	200
VALVE, CHECK; SWING SPOOL SECTION.....	396	WINDOW, CAB FRONT LOWER.....	208
VALVE, CONTROL.....	390	WINDOW, CAB RIGHT.....	202
VALVE, CONTROL (POWER ANGLE BLADE).....	410	WINDOW, RIGHT LOWER CAB.....	208
VALVE, CONTROL; ARM SPOOL SECTION.....	402	Window, Secondary Exit (Fixed Rear Window).....	212
VALVE, CONTROL; AUXILIARY SPOOL SECTION.....	406	Window, Window Kit, Cab Front Window.....	200
VALVE, CONTROL; AUXILIARY SPOOL SECTION (POWER ANGLE BLADE).....	414	WINDOWS, CAB.....	206
VALVE, CONTROL; BLADE SPOOL SECTION.....	400	WIPER MOTOR.....	200
VALVE, CONTROL; BOOM SPOOL SECTION.....	426	WIPER MOTOR WIRING HARNESS.....	200, 204
VALVE, CONTROL; BOOM SWING SPOOL SECTION.....	424	Wiper, Wiper Arm, Cab Front Window.....	200
VALVE, CONTROL; BUCKET SPOOL SECTION.....	404	Wiper, Wiper Blade, Cab Front Window.....	200
VALVE, CONTROL; HYDRAULIC LINES (1) (POWER ANGLE BLADE).....	450	Wiper, Wiper Motor Wiring Harness, Cab Hardware.....	204
VALVE, CONTROL; HYDRAULIC LINES (2) (POWER ANGLE BLADE).....	452	Wiper, Wiper Motor, Cab Front Window.....	200
VALVE, CONTROL; INLET SECTION.....	392	WIRE HARNESS, ENGINE SPEED CONTROL.....	138
VALVE, CONTROL; MID-INLET SECTION.....	394	WIRING HARNESS, AIR CONDITIONER.....	246, 248
VALVE, CONTROL; POWER ANGLE BLADE SPOOL SECTION.....	412	Wiring Harness, Antenna.....	204
VALVE, CONTROL; RELIEF VALVES (POWER ANGLE BLADE).....	416	Wiring Harness, Boom.....	160
VALVE, CONTROL; SWING SPOOL SECTION.....	396	Wiring Harness, Cab Control Levers, Auxiliary Function.....	362
VALVE, CONTROL; TRAVEL SPOOL SECTION.....	398	WIRING HARNESS, CANOPY HEADLIGHT.....	220
VALVE, EXHAUST; ENGINE.....	102	WIRING HARNESS, CONSOLE.....	164
VALVE, FUEL INJECTION.....	120	WIRING HARNESS, GLOW PLUG.....	102
VALVE, INLET; ENGINE.....	102	Wiring Harness, Machine.....	160
VALVE, INTAKE; ENGINE.....	102	WIRING HARNESS, POWER ANGLE BLADE LEVER.....	366
VALVE, LEFT-HAND CONTROL.....	358	WIRING HARNESS, SOLENOID VALVE (POWER ANGLE BLADE).....	454
Valve, Pilot (LH) Lines.....	462	WIRING HARNESS, WIPER MOTOR.....	200, 204
VALVE, PILOT CONTROL, RIGHT CONSOLE.....	356	WIRING LEAD, REAR COVER.....	266
VALVE, PILOT, (RH) LINES.....	464	WITHOUT RADIO, BRACKET.....	214
VALVE, PROPEL MOTOR FLOW CONTROL.....	92	WITHOUT RADIO, COVER.....	214
VALVE, RELIEF; ARM SPOOL SECTION.....	402	Work Lights Switch.....	164
VALVE, RELIEF; AUXILIARY SPOOL SECTION.....	406	WRIST REST, CONSOLE.....	186
VALVE, RELIEF; BOOM SPOOL SECTION.....	426		
VALVE, RELIEF; BOOM SWING SPOOL SECTION.....	424		
VALVE, RELIEF; BUCKET SPOOL SECTION.....	404		
VALVE, RELIEF; MAIN CONTROL VALVE INLET SECTION.....	392		
VALVE, RELIEF; POWER ANGLE BLADE.....	416		
VALVE, ROTARY (COMPONENTS).....	420		
VALVE, ROTARY, PATTERN CHANGER.....	444		
VALVE, SELECTOR (POWER ANGLE BLADE).....	460		
VALVE, SELECTOR; COMPONENTS (POWER ANGLE BLADE).....	418		
VALVE, SOLENOID (COMPONENTS)(TWO-WAY).....	422		
VALVE, SOLENOID (POWER ANGLE BLADE).....	408		
VALVE, SOLENOID, AIR CONDITIONER.....	260		
Valve, Solenoid, Cab Control Levers, Auxiliary Function.....	362		
VALVE, SOLENOID; HYDRAULIC LINES TO POWER ANGLE BLADE SPOOL.....	456		
VALVE, SOLENOID; HYDRAULIC LINES TO RESERVOIR (POWER ANGLE BLADE).....	454		
VALVE, SPOOL; MAIN CONTROL VALVE.....	390		

This as a preview PDF file from best-manuals.com



Download full PDF manual at best-manuals.com