

The CASE logo is displayed in white, bold, italicized capital letters. It is positioned on a black trapezoidal background that tapers to the left. A horizontal orange bar is located directly beneath the letters.

**PARTS CATALOG**  
**LOADER LANDSCAPER**

**570MXT**  
**SERIES 3**  
**TIER 3**

87659341 NA

Issued 01May 08



---

# PARTS CATALOG

---

## LOADER LANDSCAPER

---

### 570MXT SERIES 3 TIER 3

---



BD08C002

#### TABLE OF CONTENTS

- General Information
- Section 2 – Engine
- Section 3 – Fuel System
- Section 4 – Electrical System
- Section 5 – Tracks / Steering
- Section 6 – Power train
- Section 7 – Brakes
- Section 8 – Hydraulics
- Section 9 – Chassis/Attachments
- Index

CNH America, LLC reserves the right to make improvements in design or changes in specifications at any time without incurring any obligation to install them on units previously sold.

All data given in this publication is subject to production variations. Dimensions and weights are only approximate. Illustrations do not necessarily show products in standard condition. For exact information about any particular product, please consult your Dealer

This unit first became available 05-2008			
REVISION HISTORY			
Issue	Issue Date	Applicable Machines	Remarks
First Edition	01May 08	570MXT Series 3 Tier 3	87659341 NA

---

# TABLE OF CONTENTS

---

02-01	RADIATOR - MOUNTING
02-02	DEAERATION SYSTEM - MOUNTING
02-04	AIR CLEANER - AIR INTAKE PARTS
02-05	AIR CLEANER - PRECLEANER ASSY
02-06	MUFFLER - EXHAUST SYSTEM
02-07	ENGINE MOUNTING
02-08	ENGINE
02-09	CYLINDER BLOCK
02-10	CYLINDER BLOCK
02-11	OIL PUMP, PAN
02-12	CRANKCASE COVERS
02-13	CYLINDER BLOCK - COVERS
02-14	CRANKCASE COVERS
02-15	BREATHER - ENGINE
02-16	CYLINDER HEAD
02-17	CYLINDER HEAD - COVERS
02-18	CYLINDER HEAD - VALVE MECHANISM
02-19	MANIFOLD - INTAKE
02-20	EXHAUST MANIFOLD
02-21	CRANKSHAFT
02-22	CONNECTING ROD
02-23	PISTON - ENGINE
02-24	FLYWHEEL - ENGINE
02-25	PULLEY - CRANKSHAFT
02-26	DYNAMIC BALANCER, GEARS & SHAFTS
02-28	CAMSHAFT
02-29	TURBOCHARGER
02-30	ENGINE OIL DIPSTICK
02-31	OIL PUMP - ENGINE
02-32	OIL FILTERS - ENGINE
02-33	PIPING - ENGINE OIL
02-34	HEAT EXCHANGER - ENGINE
02-35	WATER PUMP
02-36	COOLING SYSTEM - ENGINE
02-37	THERMOSTAT - ENGINE COOLING SYSTEM
02-38	WATER PUMP - CONTROL
02-39	FAN DRIVE
02-41	ENGINE - LIFT HOOK
03-01	FUEL TANK AND LINES
03-02	CONTROLS - THROTTLE, HAND
03-03	CONTROLS - THROTTLE, FOOT
03-04	FUEL INJECTION PUMP
03-05	FUEL INJECTION SYSTEM
03-06	FUEL INJECTION SYSTEM
03-07	INJECTION EQUIPMENT - PIPING
03-08	FUEL FILTER
03-09	FUEL PUMP
03-10	PIPING - FUEL
03-11	FUEL INJECTION SYSTEM
04-01	STARTER
04-02	ALTERNATOR

---

# TABLE OF CONTENTS

---

04-03	STARTER MOUNTING - ALTERNATOR MOUNTING
04-04	HARNESS, ENGINE - MOUNTING AND CONNECTIONS
04-05	BATTERY - CABLES
04-06	BATTERY, DUAL
04-06A	COLD START GRID HEATER
04-07	HARNESS, FRONT CONSOLE AND SWITCHES
04-08	HARNESS, SIDE CONSOLE - MOUNTING AND CONNECTIONS
04-09	HARNESS, SIDE CONSOLE - SWITCHES
04-10	INSTRUMENT PANEL, FRONT - COVERS
04-11	INSTRUMENT PANEL, SIDE - SWITCHES AND COVERS
04-12	INSTRUMENT CLUSTER
04-13	ELECTRICAL - LAMPS, ROPS CANOPY (STANDARD)
04-14	ELECTRICAL - LAMPS, SHORT ROPS CANOPY WITH MINIMAL ROOF
04-15	ELECTRICAL - LAMPS, ROPS CAB
04-16	LAMP ASSY - ROPS CANOPY MODELS
04-17	LAMP ASSY- ROPS CANOPY MODELS
04-18	LAMP ASSY - CAB MODELS
04-19	HORN - ALARM, BACKUP
04-20	BEACON, ROTATING
04-21	ANTENNA, RADIO - HARNESS, RADIO
05-01	STEERING WHEEL - COLUMN
05-02	HYDRAULICS - STEERING
05-03	STEERING COLUMN
05-04	AXLE, FRONT (86990837) (2WD) - MOUNTING (IF USED)
05-05	AXLE, FRONT (86990837) (2WD) - HOUSING (IF USED)
05-06	AXLE, FRONT (86990837) (2WD) - HOUSING, SWIVEL (IF USED)
05-07	AXLE, FRONT (86990837) (2WD) - CYLINDER, STEERING (IF USED)
05-08	AXLE, FRONT (86990837) (2WD) - HUB AND BEARINGS (IF USED)
05-09	WHEELS, FRONT - TIRES
06-01	AXLE, FRONT DRIVE (4WD) - MOUNTING (IF USED)
06-02	AXLE, FRONT DRIVE (4WD) - HOUSING (IF USED)
06-03	AXLE, FRONT DRIVE (4WD) - HOUSING, SWIVEL (IF USED)
06-04	AXLE, FRONT DRIVE (4WD) - CYLINDER, STEERING (IF USED)
06-05	AXLE, FRONT DRIVE (4WD) - SHAFTS, AXLE (IF USED)
06-06	AXLE, FRONT DRIVE (4WD) - PLANETARY (IF USED)
06-07	AXLE, FRONT DRIVE (4WD) - DIFFERENTIAL (IF USED)
06-08	AXLE, FRONT DRIVE (4WD) - RING AND PINION (IF USED)
06-09	DRIVE SHAFT, FRONT AXLE
06-10	COOLING SYSTEM - TRANSMISSION
06-12	TRANSMISSION - MOUNTING
06-13	TRANSMISSION ASSY - FILTER, OIL
06-14	TRANSMISSION ASSY (2WD) - HOUSING
06-15	TRANSMISSION ASSY (4WD) - HOUSING
06-16	TRANSMISSION ASSY - PUMP, OIL
06-17	TRANSMISSION ASSY - SHIFTER MECHANISM
06-18	TRANSMISSION ASSY - SHAFT, IDLER AND PRIMARY
06-19	TRANSMISSION ASSY - SHAFT, INPUT
06-20	TRANSMISSION ASSY - SHAFT, SECONDARY
06-21	TRANSMISSION ASSY (4WD) - SHAFT, OUTPUT
06-22	TRANSMISSION ASSY - VALVE, CONTROL
06-23	TRANSMISSION ASSY (4WD) - VALVE, SOLENOID

---

# TABLE OF CONTENTS

---

06-24	WHEELS, REAR - TIRES
06-24A	WHEEL WEIGHTS
06-25	AXLE, REAR DRIVE - MOUNTING
06-26	AXLE, REAR - DIFFERENTIAL LOCK
06-27	AXLE, REAR DRIVE - HOUSING
06-28	AXLE, REAR DRIVE - DIFFERENTIAL
06-29	AXLE, REAR DRIVE - RING AND PINION
06-30	AXLE, REAR DRIVE - DIFFERENTIAL LOCK
06-31	AXLE, REAR DRIVE - PLANETARY
06-32	DRIVE SHAFT, REAR AXLE
07-01	AXLE, REAR DRIVE - BRAKE, DIFFERENTIAL
07-02	AXLE, REAR DRIVE - BRAKE, PARKING
07-03	BRAKE - PEDALS
07-04	HYDRAULICS - BRAKE MASTER CYLINDER
07-05	CYLINDER ASSY - BRAKE MASTER
07-06	CONTROLS - BRAKE, PARKING
08-01	HYDRAULICS - PUMP, FILTER AND LOADER VALVE
08-02	HYDRAULICS - CYLINDER, LOADER LIFT
08-03	HYDRAULICS - CYLINDER, LOADER BUCKET
08-04	HYDRAULICS - CYLINDER, LOADER CLAM
08-05	HYDRAULICS - CYLINDER, LOADER CLAM
08-06	HYDRAULICS - RIDE CONTROL
08-07	HYDRAULICS - COUPLER, LOADER TOOL QUICK
08-08	HYDRAULICS - COUPLER, LOADER TOOL QUICK, AT LOADER LIFT FRAME
08-09	VALVE, COUPLER - LOADER TOOL
08-10	HYDRAULICS - HITCH, THREE POINT
08-11	HYDRAULICS - HITCH LOCK VALVE, THREE POINT
08-12	HYDRAULICS - VALVE, LASER CONTROL (MODELS WITH THREE POINT HITCH LOCK VALVE)
08-13	PUMP, EQUIPMENT HYDRAULIC
08-14	VALVE ASSY - LOADER CONTROL, TWO SPOOL (HUSCO - WITH BUILT-IN PRIORITY VALVE)
08-15	VALVE ASSY - LOADER CONTROL, THREE SPOOL (HUSCO - WITH BUILT-IN PRIORITY VALVE)
08-16	VALVE ASSY - HITCH, THREE POINT (FOUR SPOOL CONTROL VALVE)
08-17	VALVE ASSY - HITCH, THREE POINT (FIVE SPOOL CONTROL VALVE)
08-18	VALVE SECTION - HITCH INLET
08-19	VALVE SECTION - HITCH LIFT
08-20	VALVE SECTION - HITCH LIFT
08-21	VALVE SECTION - HITCH PITCH, TILT AND IMPLEMENT
08-22	VALVE, LOCK - HITCH, THREE POINT
08-23	ACCUMULATOR ASSY - RIDE CONTROL
08-24	FILTER ASSY, OIL
08-25	CYLINDER ASSY - LOADER LIFT
08-26	CYLINDER ASSY - LOADER BUCKET
08-27	CYLINDER ASSY - LOADER CLAM
08-28	CYLINDER ASSY - HITCH LIFT, THREE POINT
08-29	CYLINDER ASSY - HITCH TILT, THREE POINT
08-30	CYLINDER ASSY - HITCH PITCH, THREE POINT
09-01	CONTROLS - LOADER LIFT AND BUCKET
09-02	CONTROLS - LOADER CLAM

---

# TABLE OF CONTENTS

---

09-03	CONTROLS - LOADER SELF-LEVELING
09-04	FRAME - LOADER LIFT
09-05	FRAME - LOADER LINKAGE
09-06	BUCKETS, LOADER LONG LIP
09-07	BUCKET, LOADER LONG LIP
09-08	BUCKET, LOADER CLAM
09-09	GUARD - VALVE, LOADER
09-10	COUPLER, TOOL QUICK
09-11	CONTROLS - HITCH, THREE POINT
09-12	COVERS - HITCH CONTROL, THREE POINT
09-13	FRAME - HITCH, THREE POINT
09-14	DRAWBAR, RIGID - HITCH, THREE POINT
09-15	COUNTERWEIGHT, FRONT
09-16	COUNTERWEIGHT, REAR (STACKABLE)
09-17	COUNTERWEIGHT, REAR (W/PTO ACCESS)
09-18	COUNTERWEIGHT, REAR (3000 LBS)
09-19	CHASSIS - MOUNTS, POD
09-20	TANK, OIL - BOX, BATTERY AND TOOL
09-23	BAFFLE - PLATE (MODELS WITH AIR CONDITIONING)
09-25	HOOD - PANELS, SIDE
09-26	HOOD - GRILLE, CHAFF SCREEN AND RADIATOR WRAPPER
09-27	PLATES, FLOOR - FLOORMATS
09-28	FENDER, REAR (CANOPY MODELS)
09-29	FENDER, REAR (CAB MODELS)
09-30	PANEL, REAR CLOSURE (CAB MODELS)
09-31	GUARD, MUD
09-32	SEAT - MOUNTING (SEARS)
09-33	SEAT - MOUNTING (SEARS MECHANICAL SUSPENSION)
09-34	SEAT ASSY, MECHANICAL SUSPENSION (SEARS)
09-37	CAB - GLASS AND MIRROR
09-38	CAB - FRAME AND COVERS
09-39	CAB - DOORS, EXTERIOR
09-40	CAB - DOORS, INTERIOR
09-41	CAB - DOOR MOUNTING
09-42	CAB - WINDOW, REAR
09-43	CAB - PANEL, CONTROL
09-44	CAB - WASHER, WINDSHIELD
09-45	CAB - WIPER, FRONT
09-46	CAB - WIPER, REAR
09-47	CAB - HEADLINER FILTER, LOUVERS, DOME LAMP
09-48	CAB - FILTER, AIR
09-49	CAB - BLOWER HOUSING, VENTILATION DUCTS, DRAIN LINES
09-50	CAB - HEATER
09-51	CAB - AIR CONDITIONING LINES, EVAPORATOR CORE
09-52	CAB - AIR CONDITIONING, CONDENSER, RECEIVER-DRIER
09-53	CAB - AIR CONDITIONING COMPRESSOR
09-54	CANOPY, ROPS - FRAME, COVERS, MIRROR, VISOR
09-55	CANOPY, ROPS - FRAME (SHORT ROPS CANOPY WITH MINIMAL ROOF)
09-56	CANOPY, ROPS - HANDLE, GRAB
09-57	MIRROR, REAR VIEW - MOUNTING (CAB MODELS)
09-58	SLOW MOVING VEHICLE EMBLEM

---

## TABLE OF CONTENTS

---

09-59	DECALS
09-60	DECALS
09-61	DECALS - ENGLISH
09-62	DECALS - LATIN AMERICAN SPANISH
09-63	DECALS - CANADIAN FRENCH
09-64	DECALS - ENGLISH
09-65	DECALS - LATIN AMERICAN SPANISH
09-66	DECALS - CANADIAN FRENCH



---

## NOTES

---

# GENERAL INFORMATION

## PROPRIETARY NOTICE

The contents of this manual are proprietary data of this company. Reproduction or use of any part for other than the operation and maintenance of our equipment is permissible only if expressly authorized in writing.

Additional copies may be obtained from your dealer. Address requests for copies to your Dealer and refer to the publication part number appearing on the bottom of the rear catalog cover or on the title page.

## COMPANY POLICY

Company policy, which is one of continuous improvement, reserves the right to change prices and to make changes in design and specification at any time without notice and without obligation to modify units previously built.

All data given in this book is subject to production variations. Dimensions and weights are approximate only and the illustrations do not necessarily show machines in standard condition. For exact information about any particular machine please consult your dealer.

## PARTS AND ACCESSORIES

Genuine parts and accessories have been specifically designed for these machines.

We would like to point out that “non-genuine” parts and accessories have NOT been examined and released by the Company. The installation and or use of such products could have negative effects upon the design characteristics of your machine and thereby affect its safety. The company is not liable for any damage caused by the use of “non-genuine” parts and accessories.

## IMPROVEMENTS

We are continually striving to improve our products. We reserve the right to make improvements or changes when it becomes practical and possible to do so, without incurring any obligation to make changes or additions to the equipment sold previously.

## MODEL CODES

The range of machines listed may not be available in all countries or markets therefore, for the latest information consult your local dealer.

## OWNER ASSISTANCE

We want you to be completely satisfied with your investment. Normally any problems with your equipment will be handled by your dealer's Service Department; however, misunderstandings can occur. If your problem has not been handled to your satisfaction, we suggest the following:

1. Contact the owner or General Manager of the dealership, explain the problem, and request assistance. When additional assistance is needed, your dealer has direct access to our office.
2. Provide your dealer with:
  - Your Name, Address, and Telephone number
  - Machine Model and Serial Number
  - Dealership Name and Address
  - Machine purchase date and amount of use
  - Nature of problem

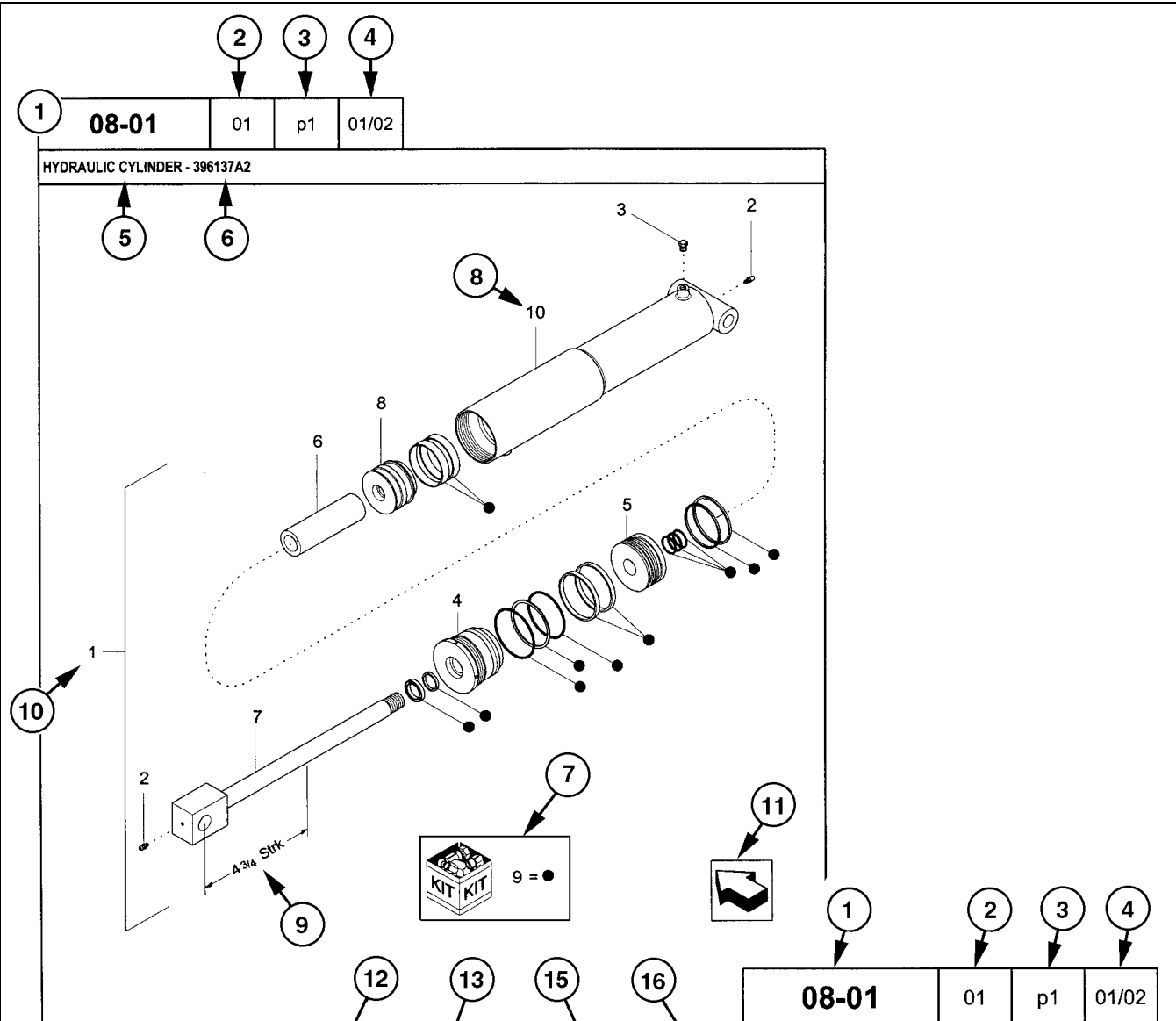
Be aware that your problem will likely be resolved in the dealership using the dealer's facilities, equipment, and personnel. So it is important that your initial contact be with the dealer.

## SPARE PARTS

To maintain operating efficiency, use original spare parts.

When ordering parts, give the following information:

- Machine Model
- Machine and Engine Serial Numbers
- Part Number from the Parts Catalog



REF	FN	PART NUMBER	YR/SN	QTY	DESCRIPTION
1	1	396137A2	BTW 01/85 & 02/02	1	CYLINDER ASSY. 4-3/4 in strk, Inc 2-10
2		31-95	Before 01/85	2	FITTING
2		219-8	From 01/85	2	NIPPLE, LUBE Grease, 1/4 tpr x 17/32
3		{402475A2}		1	BREATHER
4		402474A1		1	CAP CYLINDER END
5		402468A1	BSN JJC0189199	1	PISTON ROD/GLAND
5		145221C3	ASN JJC0189200	1	PISTON
6		402471A1		1	SPACER
7		402473A1		1	ROD, PISTON
8		402469A1		1	PISTON ROD/GLAND
9		402476A1		1	PACKAGE, SEALS
10		NSS		1	NOT SERVICED SEPARAT CASE ASSEMBLY
(1)	08-20				
		STANDARD			
		MODELS			

## HOW TO USE YOUR PARTS CATALOG

1. Figure Number
2. Sequence Code within the Figure Number
3. Page Number within the Sequence Code
4. Date of Printing (month / year)
5. Figure Description
6. General information regarding the figure
7. Parts supplied in repair kits per symbol reference
8. Figure call-out of the part number (REF)
9. Technical specifications relating to the part indicated
10. Figure call-out includes bracketed items, the included items may also be listed in the additional description area
11. Orientation - Arrow indicates front of the machine
12. Footnote - Additional information relating to the part number. In this example, 08-20 equals another figure that this part is shown on
13. Part Number
  - NSS = Not Serviced Separately (Non-serviced parts)
  - Bracketed numbers = not available as service parts in this market
14. Not Available as service part in this market
15. YR/SN
  - Year
    - Before 01/85 = Part valid for production January 1985 and before
    - From 01/85 = Part valid for production from January 1985 and after
    - BTW 01/85 & 02/02 = Part valid for machines produced between January 1985 and February 2002.
  - Serial Number (P.I.N.)
    - BSN JJC0268800 = Part valid for serial number JJC0268800 and below
    - ASN JJC0268800 = Part valid for serial number JJC0268800 and above
    - BTW JJC0178000 & JJC0179000 = Part valid for serial numbers between JJC0178000 & JJC0179000
16. Total Quantity of the Part referred to in the page. The quantity can be replaced by the following indications:
  - AR = As Required
  - X = As required
17. Part Description
18. Additional description of the part to help confirm identification
19. Figure Notes
20. Model Number(s)

### RIGHT-HAND AND LEFT-HAND

The reference to right-hand and left-hand in this catalog is identified by the operator standing at the rear of the basic unit (without rear attachment), looking toward the front of the machine (in normal forward travel).

For pages covering any machine attachments, right-hand and left-hand are defined by the operator sitting in the position for proper operation of the attachment.

### DIMENSIONS

Metric and U.S. hardware dimensions do not show the numeric designations of standard coarse threads. A number following a semi colon (;) is the class or grade of hardware. A comma (,) represents the decimal point (.) used in U.S. dimensions.

## EXPLANATION OF ABBREVIATIONS

AC	Alternating Current
adj	adjustable
amp	ampere
AR	As required
ASN	Serial number and after P.I.N. and after
blkhd	bulkhead
br	branch
BSN	before Serial number before P.I.N.
BTW	between
cc	cubic centimetre
cl	class
cmprsn	compression
cn pt	cone point
cp pt	cup point
CRS	Chrome Alloy Steel
CST	Carbon Steel
cu yd	cubic yard
DC	Direct Current
deg	degree
dg pt	dog point
dia	diameter
dr type	drive type
fc	face
fc sl	face seal
fem	female
fem PT	female pipe thread
fl	flare
flat pt	flat point
ft	feet or foot
ga	gauge
gal	gallon or gallons
gpm	gallons per minute
gr	grade
hd	head
hdg pt	half dog point
hp	horsepower
ID	inside diameter
in	inch or inches
Incl.	Includes
inv fl	inverted flare
K	kilo
kg	kilogram
km/h	kilometers per hour

L	litre
lb	pounds
lb-ft	pound-foot
lg	long
LH	left-hand
LH thd	left-hand thread
M	(prefix) metric thread size
m	metre
ml	milliliter
mm	millimetre
NF	National Fine
No.	number
NPT	National Pipe Thread
NS	National Super Fine
OD	outside diameter
ohm	electrical unit of resistance
Or	O-ring
ORB	O-ring boss
ORFS	O-ring face seal
ov cntr	over center
ov pt	oval point
oz	ounce
P	pitch
psi	pounds per square inch
pt	pint
PT	pipe thread
rd	round
rd holes	round holes
RH	right-hand
RH thd	right-hand thread
rpm	revolutions per minute
sl	self-locking
sq	square
SST	Stainless Steel
st	self-tapping
strk	stroke
sw	swivel
T	teeth
thk	thick
tpr	taper
tube OD	tube outside diameter
V	volt or volts
W	watt or watts
X	as required
yd	yard

---

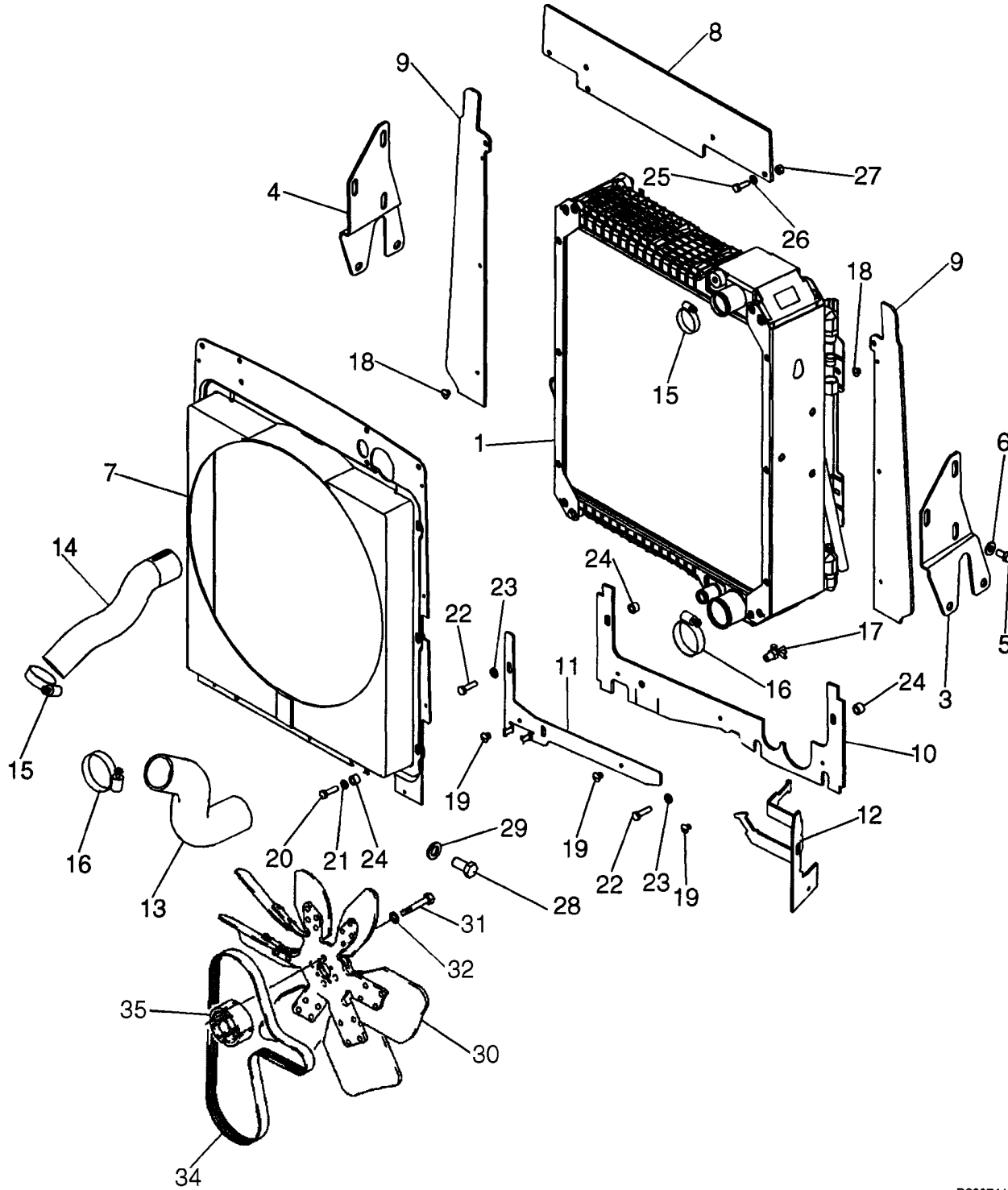
# SECTION INDEX

## Engine

---

02-01	RADIATOR - MOUNTING
02-02	DEAERATION SYSTEM - MOUNTING
02-04	AIR CLEANER - AIR INTAKE PARTS
02-05	AIR CLEANER - PRECLEANER ASSY
02-06	MUFFLER - EXHAUST SYSTEM
02-07	ENGINE MOUNTING
02-08	ENGINE
02-09	CYLINDER BLOCK
02-10	CYLINDER BLOCK
02-11	OIL PUMP, PAN
02-12	CRANKCASE COVERS
02-13	CYLINDER BLOCK - COVERS
02-14	CRANKCASE COVERS
02-15	BREATHER - ENGINE
02-16	CYLINDER HEAD
02-17	CYLINDER HEAD - COVERS
02-18	CYLINDER HEAD - VALVE MECHANISM
02-19	MANIFOLD - INTAKE
02-20	EXHAUST MANIFOLD
02-21	CRANKSHAFT
02-22	CONNECTING ROD
02-23	PISTON - ENGINE
02-24	FLYWHEEL - ENGINE
02-25	PULLEY - CRANKSHAFT
02-26	DYNAMIC BALANCER, GEARS & SHAFTS
02-28	CAMSHAFT
02-29	TURBOCHARGER
02-30	ENGINE OIL DIPSTICK
02-31	OIL PUMP - ENGINE
02-32	OIL FILTERS - ENGINE
02-33	PIPING - ENGINE OIL
02-34	HEAT EXCHANGER - ENGINE
02-35	WATER PUMP
02-36	COOLING SYSTEM - ENGINE
02-37	THERMOSTAT - ENGINE COOLING SYSTEM
02-38	WATER PUMP - CONTROL
02-39	FAN DRIVE
02-41	ENGINE - LIFT HOOK

RADIATOR - MOUNTING



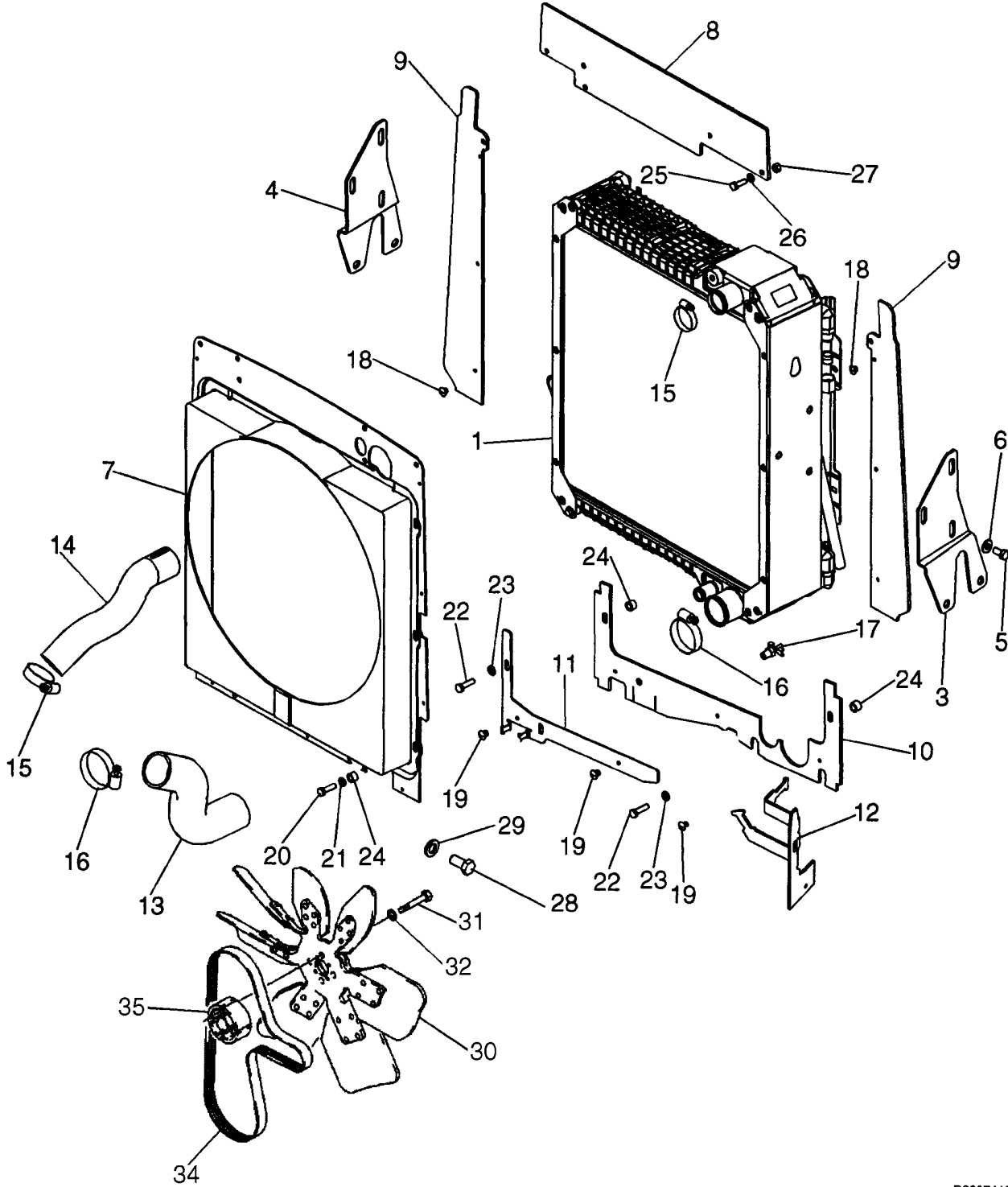
## RADIATOR - MOUNTING

REF	FN	PART NUMBER	YR/SN	QTY	DESCRIPTION
1		87576643		1	RADIATOR, 3 Row, Component Parts Not Available At Time Of Printing; With Or Without Air Conditioning
3		87740954		1	BRACKET, SUPPORTING, Bracket, RH Radiator Support
4		87740955		1	BRACKET, SUPPORTING, Bracket, LH Radiator Support
5		614-10020		6	BOLT, Hex, M10 x 20, 8.8, Full Thd
6		895-15010		6	WASHER, M11 x 24 x 2
7		87686669		1	SHROUD, Shroud, Fan
8		87687546		1	SEAL, RUBBER, Seal, Radiator, Top
9		87687548		2	SEAL, RUBBER, Seal, Radiator, RH and LH
10		87740962		1	SEAL, RUBBER, Seal, Radiator, Bottom
11		87686110		1	PLATE, Plate, LH Lower Shroud
12		87740975		1	PLATE, FIXING, Plate, RH Lower Shroud
13		87454378		1	HOSE, LARGE, Lower Radiator
14		87454377		1	HOSE, LARGE, Upper Radiator
15		214-1432		2	CLAMP, HOSE, #32, 1.56/2.50 Type F Worm
16		214-1440		2	CLAMP, HOSE, #40, 2.06/3.00 Type F Worm
17		76904		1	VALVE, Drain
18		87301355		6	RIVET, Pop, 3/16" x .575"
19		87301356		3	RIVET, Pop, 3/16" x .700"
20		806-8016		4	BOLT, Hex, Lock, M8 x 16, CI 10.9, 20 x 490 x 8 mm; Adhesive Back; Vertical; Radiator to Oil Cooler
21		895-11008		4	WASHER, M8 x 16 x 1.6
22		614-8030		2	BOLT, Hex, M8 x 30, 8.8
23		895-11008		2	WASHER, M8 x 16 x 1.6
24		407962A1		2	SPACER
25		614-8025		2	BOLT, Hex, M8 x 25, 8.8
26		895-11008		4	WASHER, M8 x 16 x 1.6
27		832-10408		2	NUT, LOCK, M8 x 1.25, CI 8
28		614-12025		4	BOLT, Hex, M12 x 25, 8.8
29		896-12012		4	WASHER, M12 x 24.5 x 3, HT
30		228133A2		1	FAN, Models With Air Conditioning
30		185377A1		1	FAN, Models Without Air Conditioning
31		814-10090		4	BOLT, Hex, M10 x 90, 8.8

570MXT



RADIATOR - MOUNTING

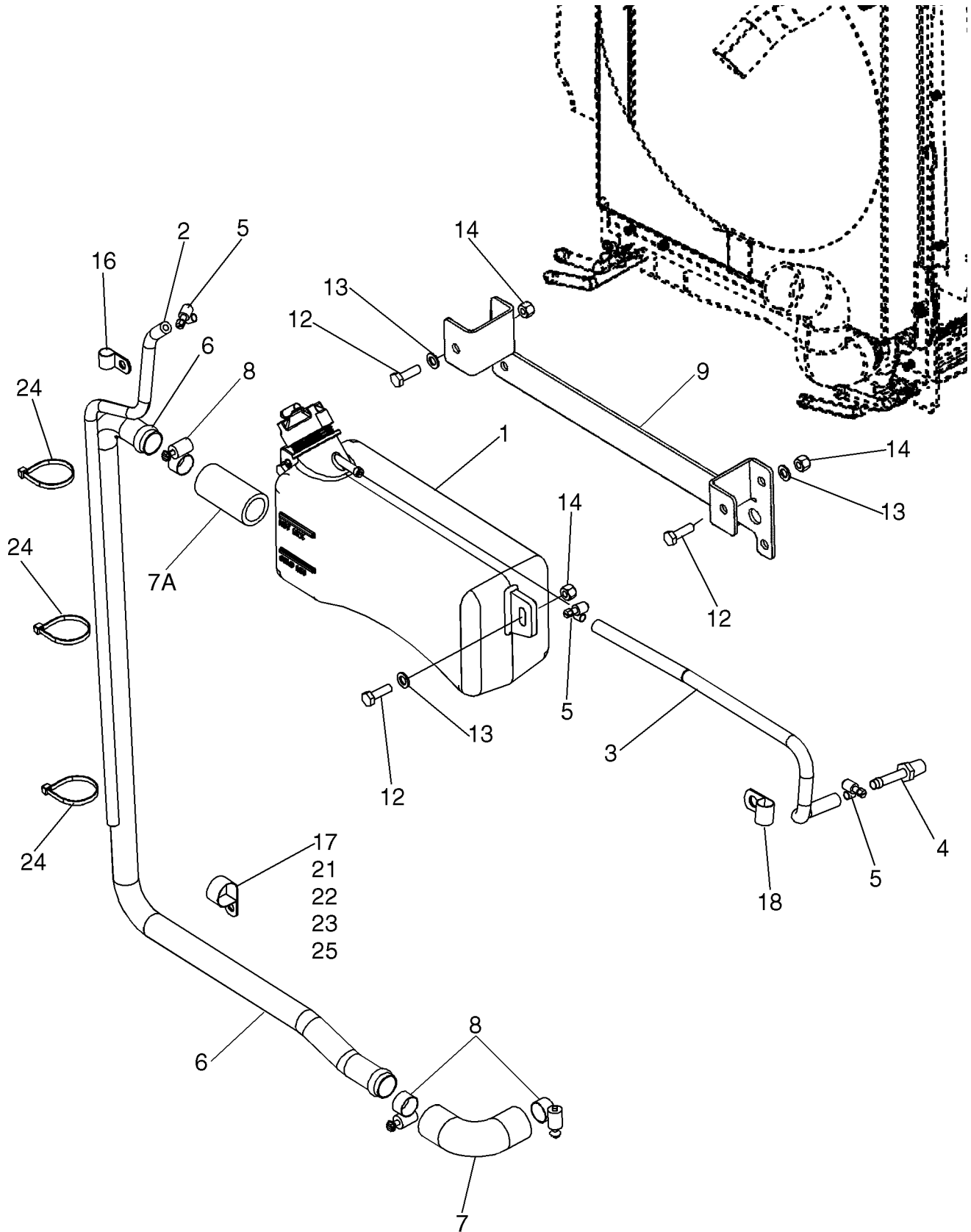


**RADIATOR - MOUNTING**

REF	FN	PART NUMBER	YR/SN	QTY	DESCRIPTION
32		496-21041		4	WASHER, 13/32" x 13/16" x .089", HDN
33		87353191		1	SPACER
34		85826230		1	BELT

	<b>570MXT</b>
--	---------------

DEAERATION SYSTEM - MOUNTING

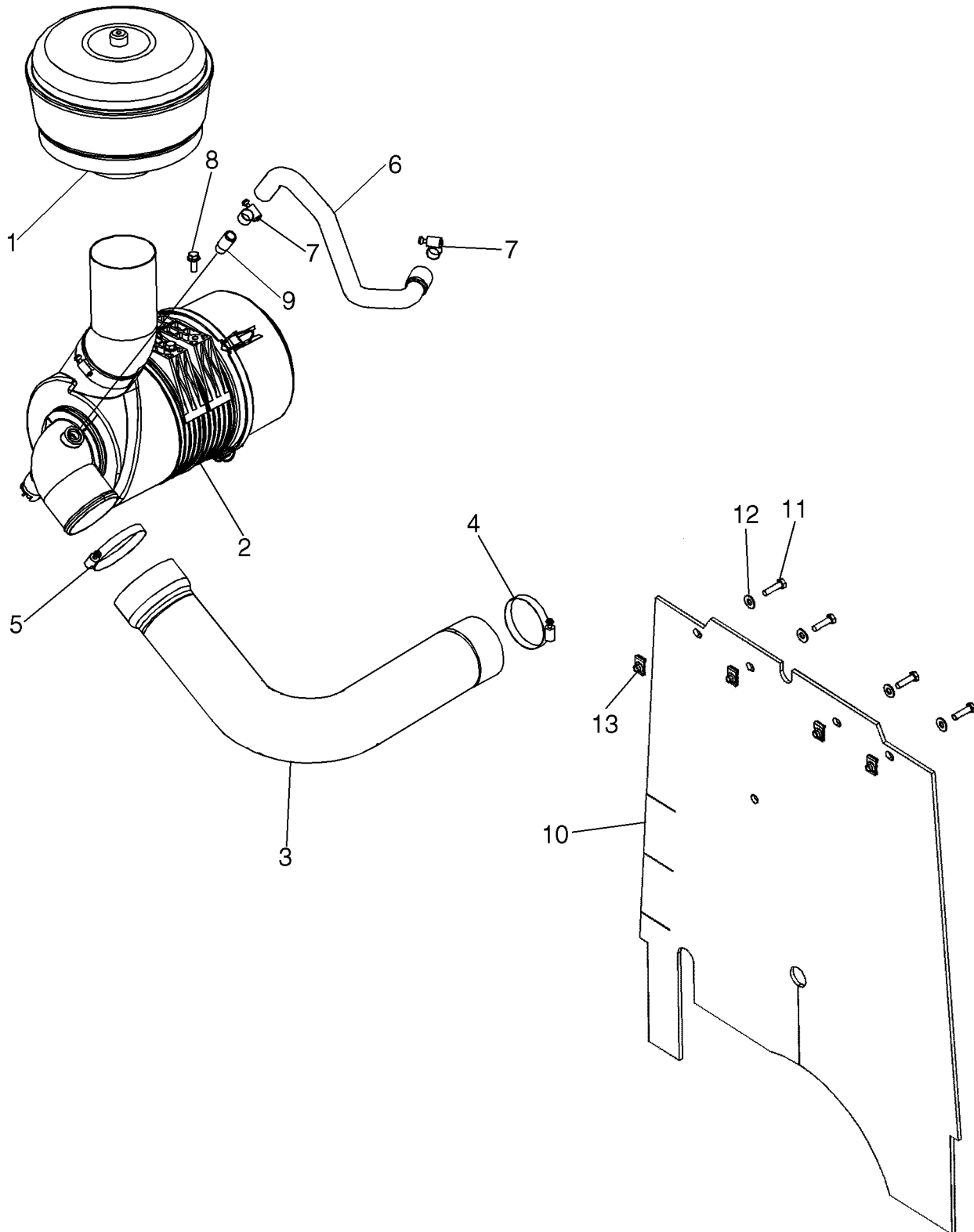


## DEAERATION SYSTEM - MOUNTING

REF	FN	PART NUMBER	YR/SN	QTY	DESCRIPTION
1		87674844		1	RESERVOIR, COOLANT EXPNSN, Deaeration Reservoir, 3.0 Liters; Includes 85803019 Cap
		85803019		1	CAP, FILLER, 13 psi
2		87616934		1	HOSE, Overflow Hose; 750 mm
3		87715487		1	HOSE, Recovery, 440 mm; Reservoir to Radiator
4		87301325		1	FITTING, 5/16" Hose X 1/4" NPTF Beaded
5		214-1704		3	CLAMP, HOSE, #4, 0.25/0.62 Type M Worm
6		87557237		1	TUBE, RIGID
7		87454376		1	HOSE, Deaeration Elbow
7A		87367622		1	HOSE, 70 mm
8		214-1416		4	CLAMP, HOSE, #16, 0.81/1.50 Type F Worm
9		87687521		1	BRACKET, SUPPORTING, Bracket, Bottle Retaining
12		614-8025		6	BOLT, Hex, M8 x 25, 8.8
13		895-11008		6	WASHER, M8 x 16 x 1.6
14		832-10408		6	NUT, LOCK, M8 x 1.25, CI 8
16		515-23143		1	CLAMP, 9/16", Insul, 3/8" Bolt
17		515-22254		1	CLAMP, 1", Insul, 5/16" Bolt
18		515-23143		1	CLAMP, 9/16", Insul, 3/8" Bolt
21		614-8040		1	BOLT, Hex, M8 x 40, 8.8, Full Thd
22		87418360		1	SPACER, 8 x 16 mm
23		895-11008		1	WASHER, M8 x 16 x 1.6
24		L11541		3	STRAP, CABLE
25		832-10408		1	NUT, LOCK, M8 x 1.25, CI 8

570MXT

AIR CLEANER - AIR INTAKE PARTS

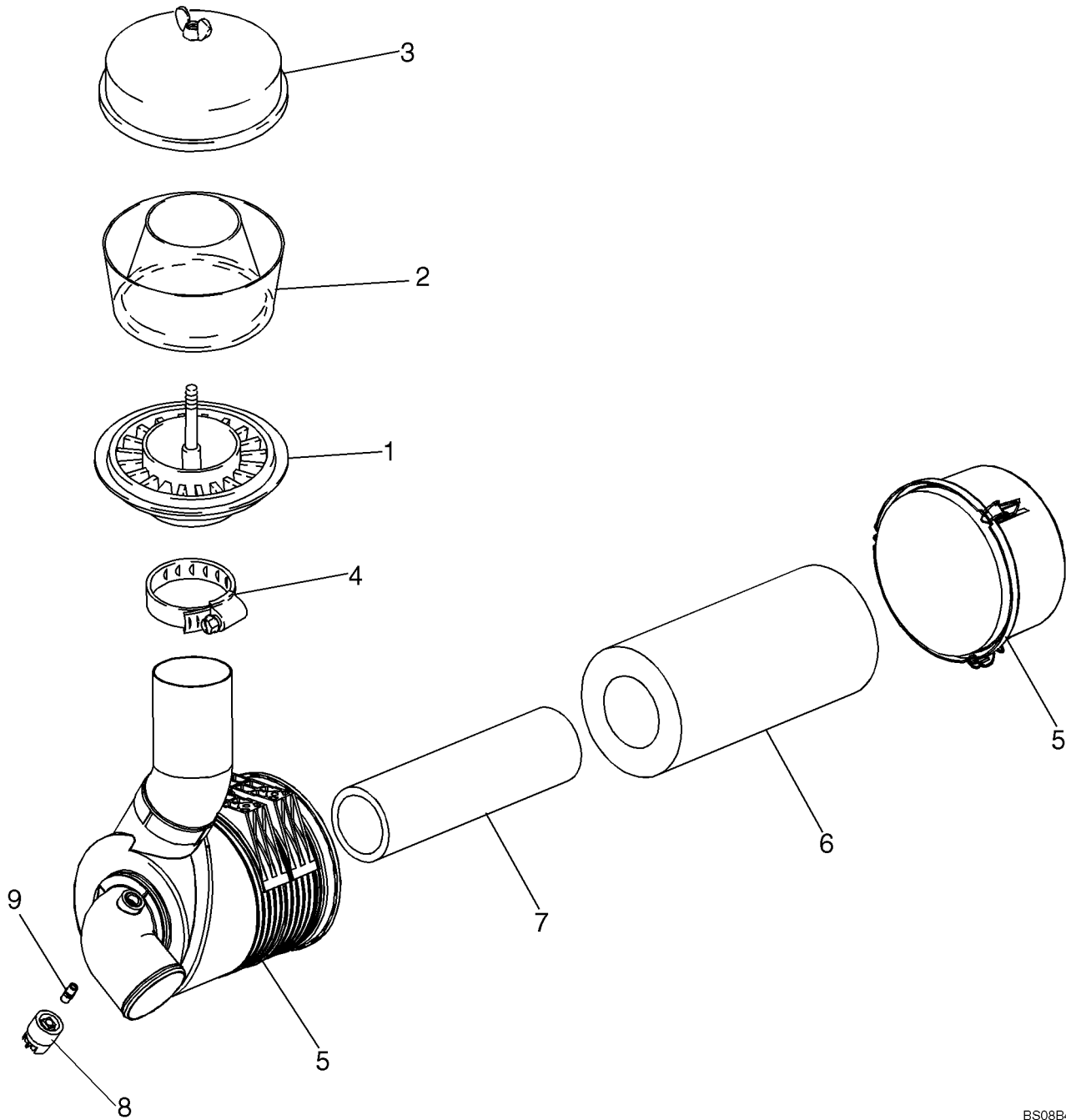


## AIR CLEANER - AIR INTAKE PARTS

REF	FN	PART NUMBER	YR/SN	QTY	DESCRIPTION
1		228120A1		1	PRECLEANER, See Figure 02-05
2		87687227		1	AIR CLEANER, Air Cleaner Assy; See Figure 02-05
3		87687235		1	HOSE, LARGE, Hose, Air Cleaner To Engine
4		214-1456		1	CLAMP, HOSE, #56, 3.06/4.00 Type F Worm
5		214-1464		2	CLAMP, HOSE, #64, 3.56/4.50 Type F Worm
6		87687237		4	HOSE, LARGE, Hose
7		214-1412		2	CLAMP, HOSE, #12, 0.69/1.25 Type F Worm
8		844-8020		4	BOLT, Hex Flg, M8 x 20, 8.8
9		L17985		1	FITTING
10		87687190		1	CURTAIN, Curtain, Barrier; Heat and Noise Reduction
11		87026277		4	BOLT, Hex, Lock, M8 x 30, CI 10.9
12		895-15008		4	WASHER, M8 x 20 x 1.6
13		833-40408		4	NUT, M8, U

570MXT

AIR CLEANER - PRECLEANER ASSY



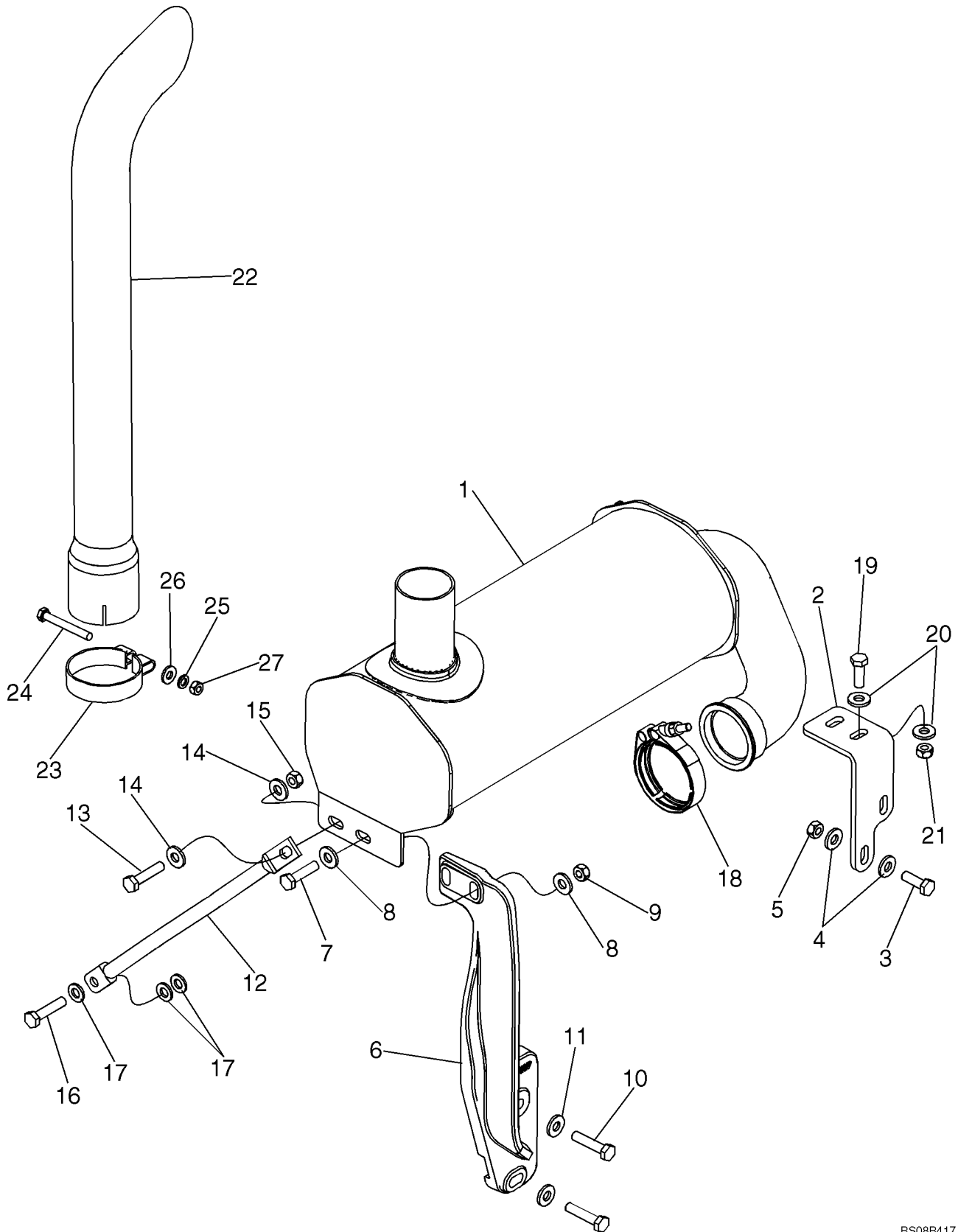
## AIR CLEANER - PRECLEANER ASSY

REF	FN	PART NUMBER	YR/SN	QTY	DESCRIPTION
		228120A1		1	PRECLEANER, Incl. Of 1 - 4
1		NSS		1	NOT SERVICED SEPARATELY, Body
2		277377R1		1	HOUSING
3		A42281		1	COVER
4		214-1464		1	CLAMP, HOSE, #64, 3.56/4.50 Type F Worm
		87687227		1	AIR CLEANER, Air Cleaner Assy; Incl. Ref 5 - 9
5		NSS		1	NOT SERVICED SEPARATELY, Housing
6		82981152		1	FILTER, AIR, Primary
7		82981153		1	FILTER, AIR, Secondary
8		79081900		1	SWITCH, PRESSURE, Air Restriction
9		86976679		1	ADAPTER

570MXT



MUFFLER - EXHAUST SYSTEM

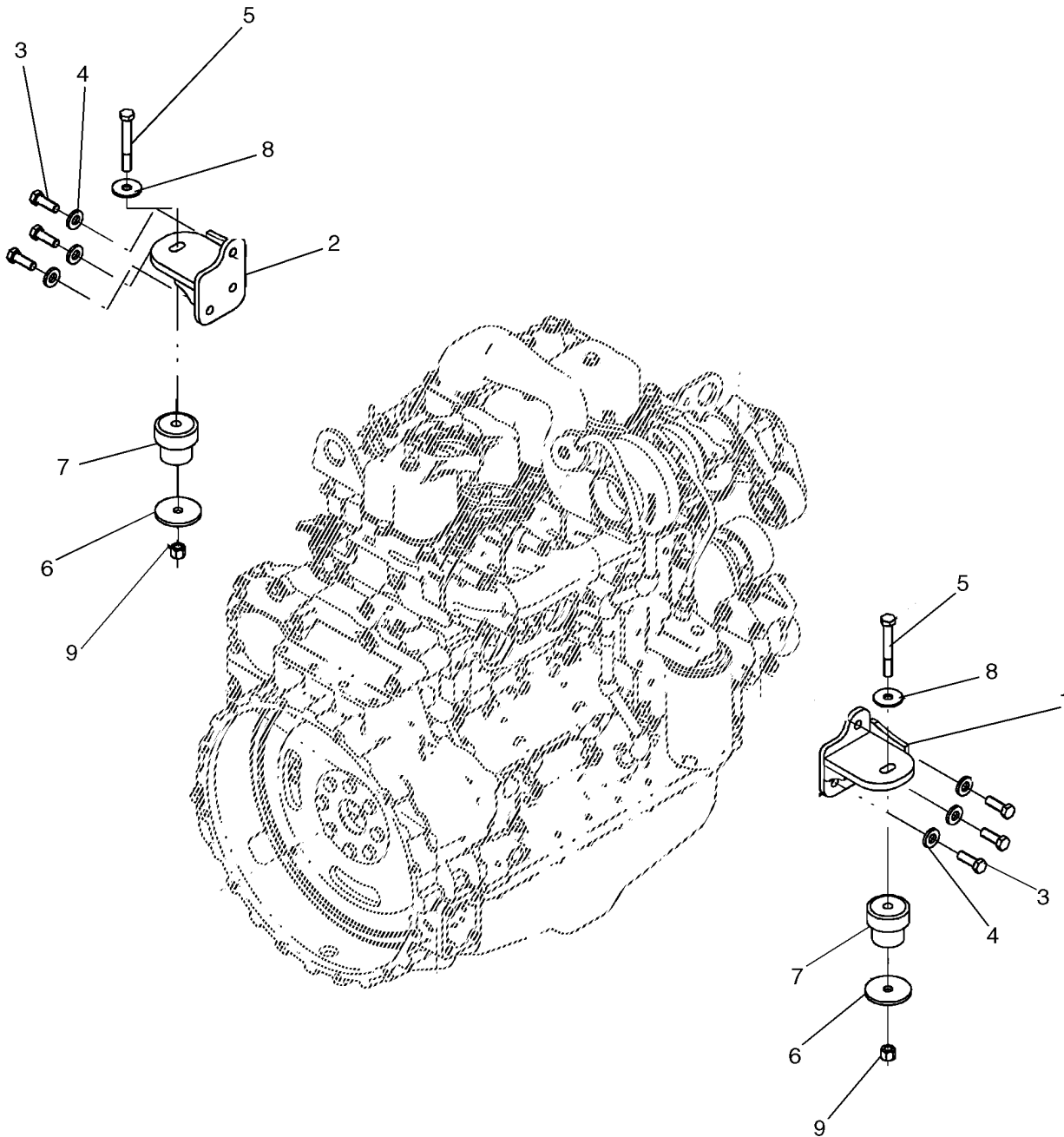


## MUFFLER - EXHAUST SYSTEM

REF	FN	PART NUMBER	YR/SN	QTY	DESCRIPTION
1		87310639		1	MUFFLER
2		87423531		1	BRACKET, SUPPORTING
3		627-10030		2	BOLT, Hex, M10 x 30, 10.9, Full Thd
4		896-15010		4	WASHER, M10 x 24.5 x 3, HT
5		829-1410		2	NUT, M10, CI 10
6		87451167		1	BRACKET, SUPPORTING
7		827-10040		1	BOLT, Hex, M10 x 40, 10.9, Full Thd
8		896-15010		2	WASHER, M10 x 24.5 x 3, HT
9		829-1410		1	NUT, M10, CI 10
10		827-10045		2	BOLT, Hex, M10 x 45, 10.9
11		896-15010		2	WASHER, M10 x 24.5 x 3, HT
12		87442357		1	BRACE
13		827-10045		1	BOLT, Hex, M10 x 45, 10.9
14		896-15010		2	WASHER, M10 x 24.5 x 3, HT
15		829-1410		1	NUT, M10, CI 10
16		814-10045		1	BOLT, Hex, M10 x 45, 8.8
17		896-11010		3	WASHER, M10 x 21.5 x 2.5, HT
18		A170467		1	CLAMP
19		627-10030		2	BOLT, Hex, M10 x 30, 10.9, Full Thd
20		896-15010		4	WASHER, M10 x 24.5 x 3, HT
21		829-1410		2	NUT, M10, CI 10
22		87309656		1	VERTICAL EXHAUST
23		87437804		1	PIPE CLAMP
24		614-10080		1	BOLT, Hex, M10 x 80, 8.8, Full Thd
25		892-11010		1	WASHER, LOCK, M10
26		896-15010		1	WASHER, M10 x 24.5 x 3, HT
27		829-1410		1	NUT, M10, CI 10

570MXT

ENGINE MOUNTING



## ENGINE MOUNTING

REF	FN	PART NUMBER	YR/SN	QTY	DESCRIPTION
1		87475322		1	BRACKET, SUPPORTING, Bracket, RH Engine Mounting
2		87475321		1	BRACKET, SUPPORTING, Bracket, LH Engine Mounting
3		614-12035		6	BOLT, Hex, M12 x 35, 8.8, Full Thd
4		896-15012		6	WASHER, M12 x 28.5 x 4, HT
5		814-12090		2	BOLT, Hex, M12 x 90, 8.8
6		85801585		2	WASHER, SEALING
7		87416966		2	ISOLATOR
8		85802618		2	WASHER, SEALING
9		832-10412		2	NUT, LOCK, M12 x 1.75, CI 8

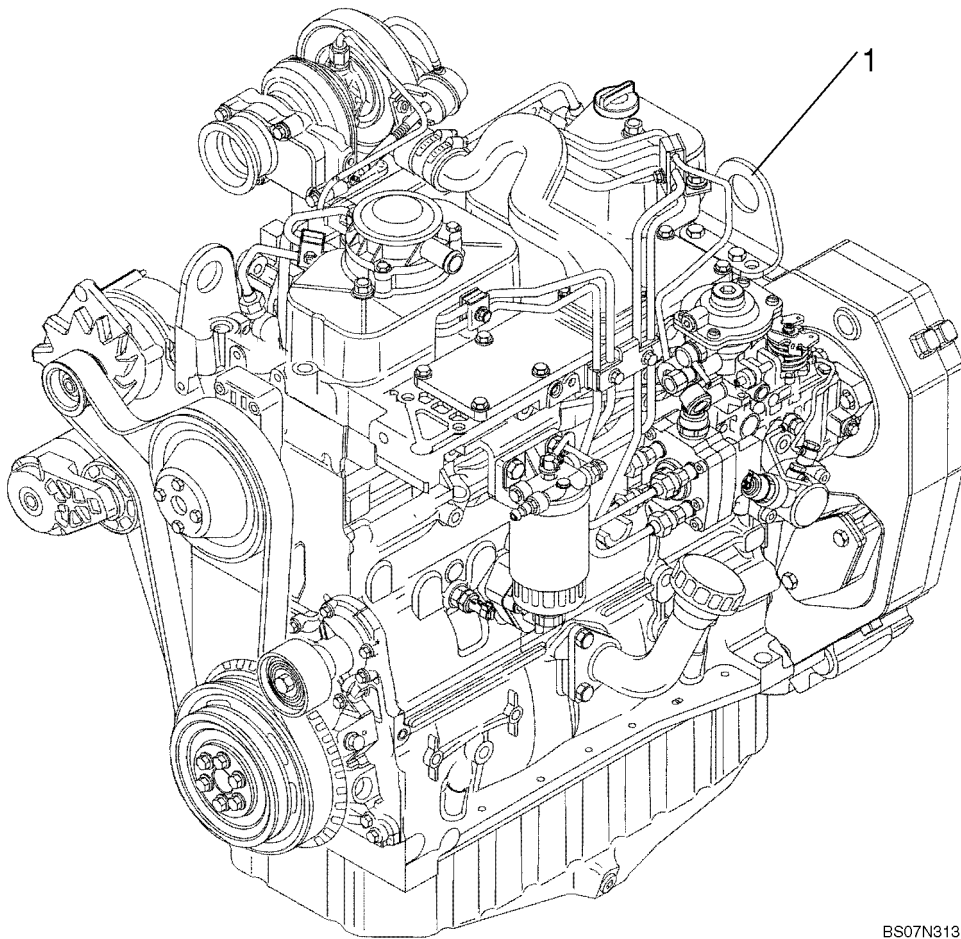
570MXT

02-08

p1

01/08

ENGINE



BS07N313

**ENGINE**

REF	FN	PART NUMBER	YR/SN	QTY	DESCRIPTION
1		87603948		1	ENGINE, 85 hp, Internal Intake EGR; Bosch Injection Pump; Turbocharged Engine; Includes Parts On Figures 02-08 - 02-41, 03-04 - 03-11

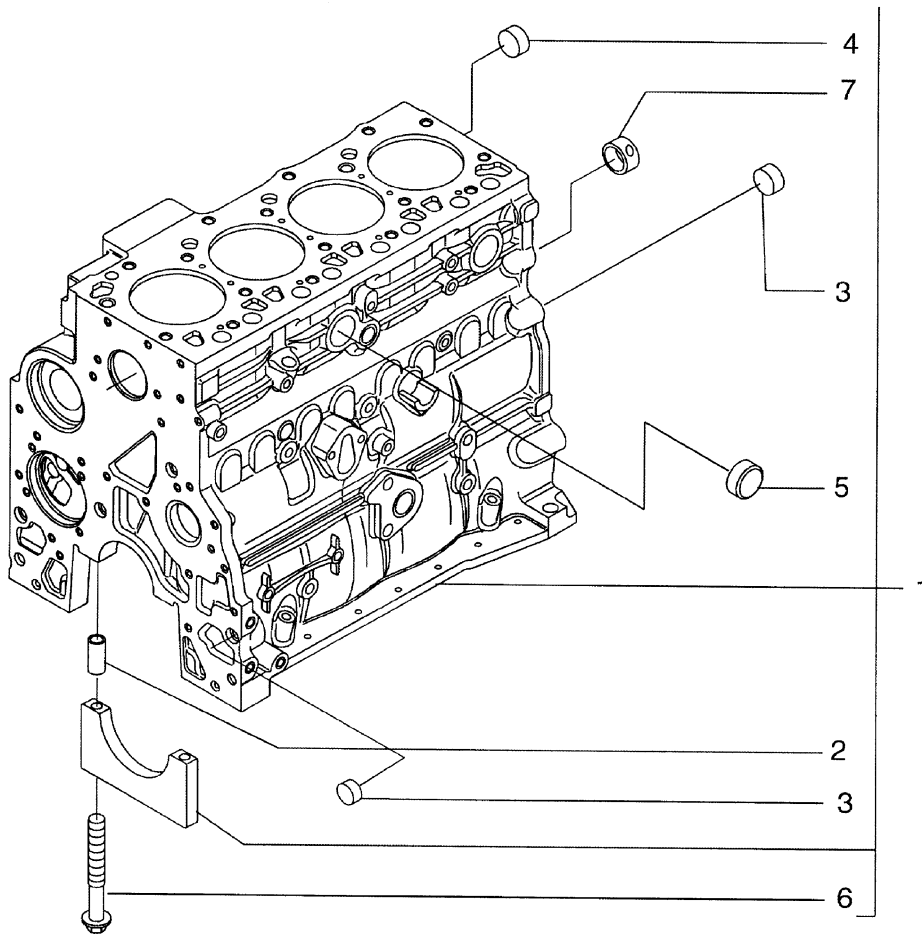
	<b>570MXT</b>
--	---------------

02-09

p1

01/08

CYLINDER BLOCK



02-09

p1

01/08

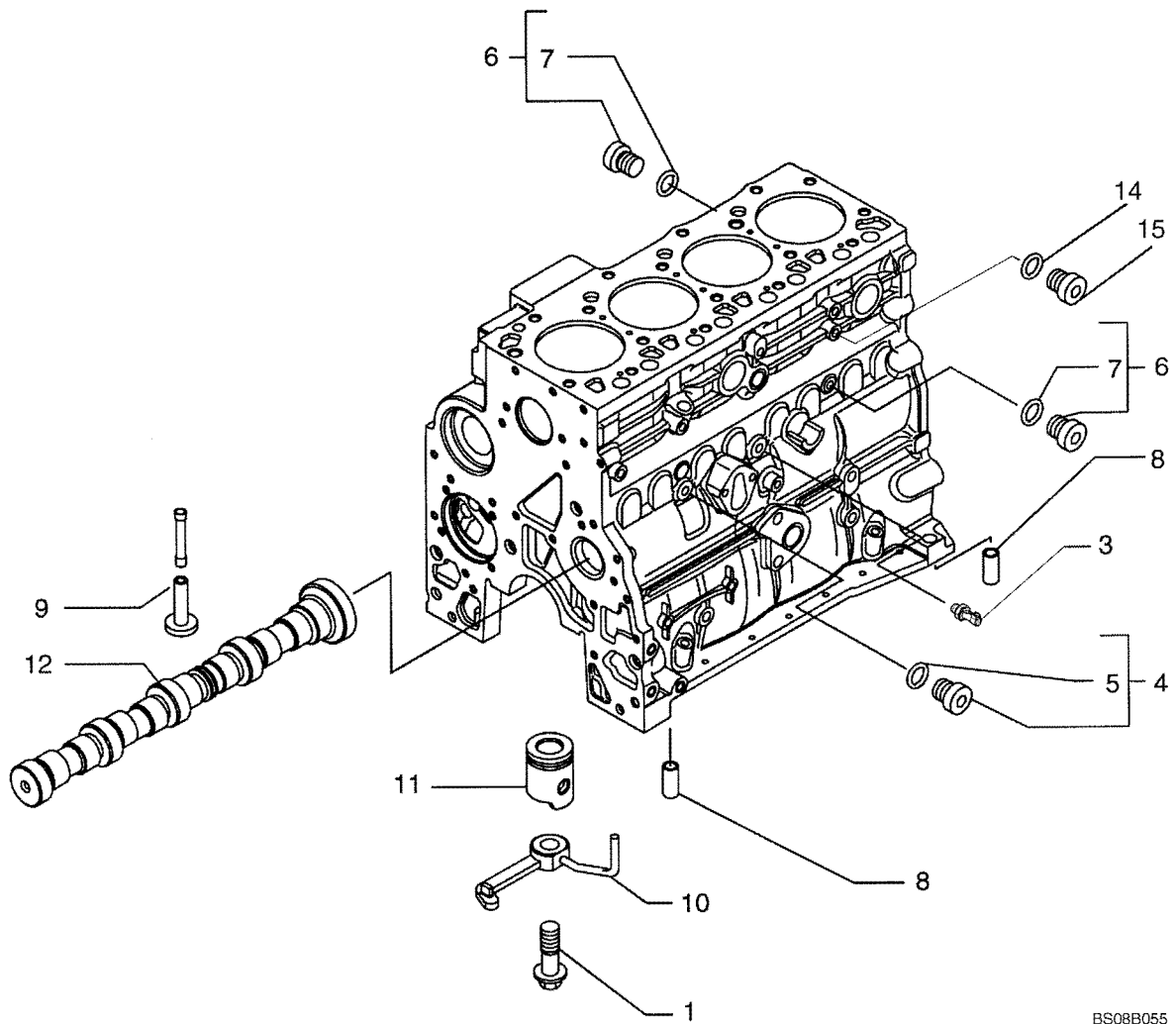
## CYLINDER BLOCK

REF	FN	PART NUMBER	YR/SN	QTY	DESCRIPTION
1		2830082		1	CYLINDER BLOCK, - ASSY; Incl. Ref 2 - 7, Plus Main Bearing Caps
		4895919		4	BEARING, CRANKSHAFT, Main Bearing Cap; Not Serviced Separately
		4895921		1	BEARING, CRANKSHAFT, Main Bearing Cap; Not Serviced Separately
2		4899026		10	DOWEL
3		4895039		3	PLUG
4		4895038		4	PLUG
5		4895228		2	PLUG
6		4891353		10	SCREW, Flg Hd, M12 x 1.5 x 120
7		4895040		1	BUSHING

570MXT



CYLINDER BLOCK

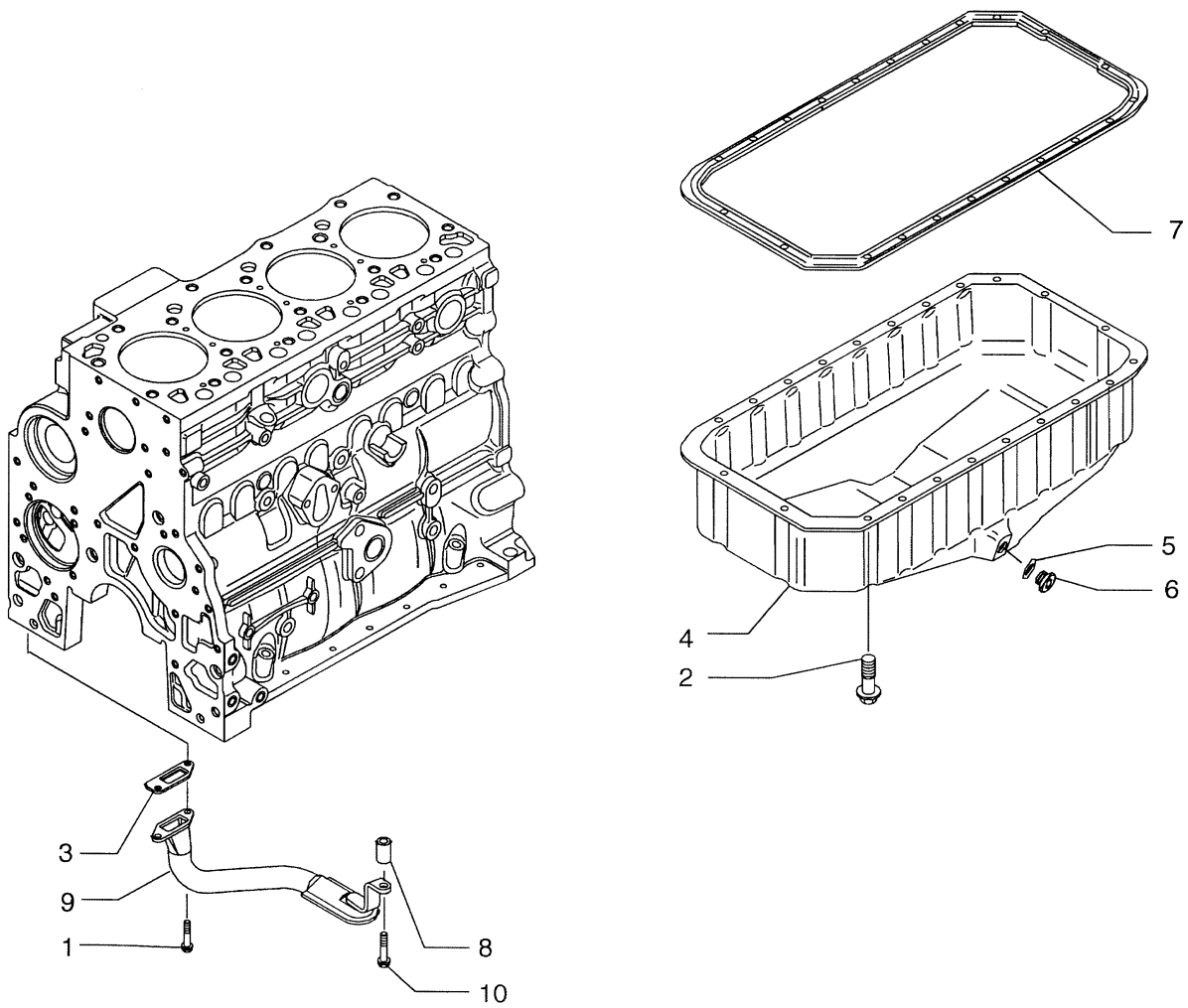


## CYLINDER BLOCK

REF	FN	PART NUMBER	YR/SN	QTY	DESCRIPTION
1		4894218		4	SCREW
3		2852889		1	SWITCH, PRESSURE
4		4899009		1	PLUG, M10 x 1; Incl. Ref 5
5		4899072		1	O-RING
6		4895392		2	PLUG, 18 x 1.5; Incl. Ref 7
7		4895393		1	O-RING
8		4895049		2	DOWEL
9		4895180		8	TAPPET
10		2852202		4	NOZZLE, LUB. OIL JET, Incl. Ref 1
11		REF		1	INSTRUCTION, PISTON; See Figure 02-23
12		REF		1	INSTRUCTION, CAMSHAFT; See Figure 02-28
14		4895623		1	PLUG
15		4895625		1	O-RING

570MXT

OIL PUMP, PAN

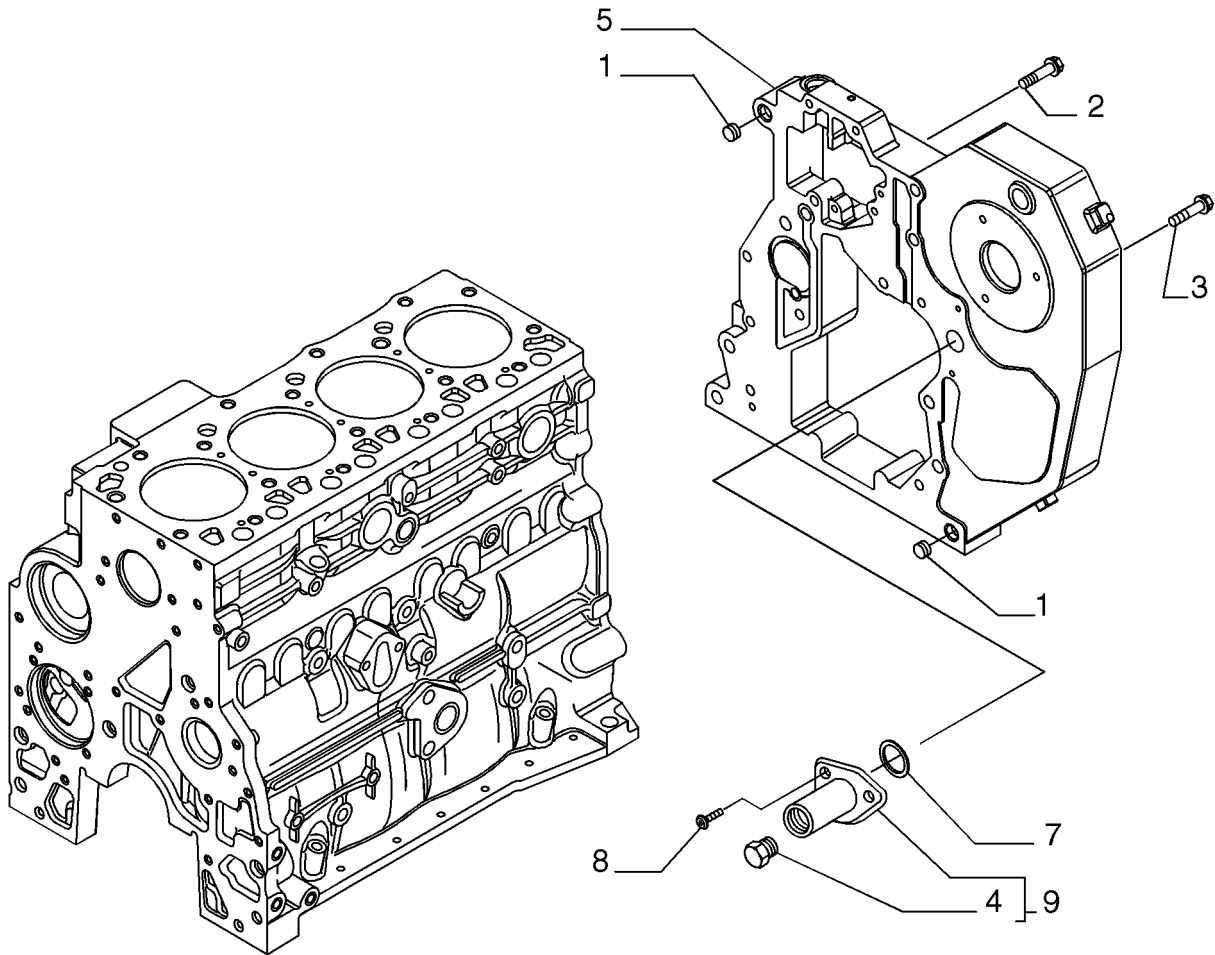


## OIL PUMP, PAN

REF	FN	PART NUMBER	YR/SN	QTY	DESCRIPTION
1		16673635		2	SCREW, M8 x 1.25 x 20mm
2		4899091		22	SCREW, Hex Fig, M8 x 1.25 x 40
2		4895489		2	SCREW, Flange, M8 x 110
3		4898301		1	GASKET
4		2852011		1	PAN, ENGINE OIL
5		2852978		1	O-RING
6		2856086		1	PLUG, 22 x 1.5; Does Not Include Seal, Purchase Seal Separately
7		2852012		1	GASKET
8		2852016		1	SPACER
9		2852013		1	STRAINER, ELEMENT, Tube; Oil Suction, Includes Screen Which Is Not Serviced Separately
10		4895538		1	SCREW, Flange, M10 x 120

570MXT

CRANKCASE COVERS



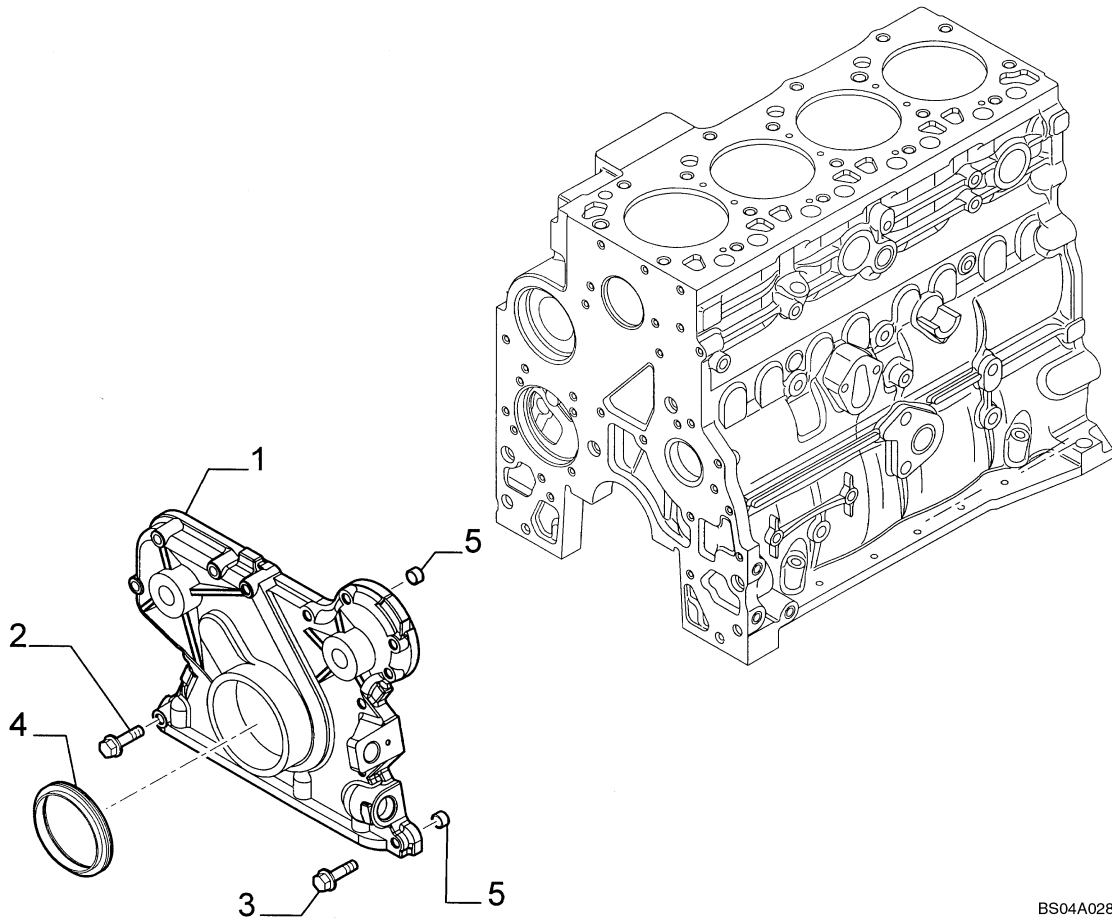
BS07M802

## CRANKCASE COVERS

REF	FN	PART NUMBER	YR/SN	QTY	DESCRIPTION
1		4899026		2	DOWEL
2		4899091		4	SCREW, Hex Flg, M8 x 1.25 x 40
3		4899093		5	SCREW, Hex Flg, M10 x 1.5 x 30
3		4899073		1	SCREW, Hex Flg, M12 x 1.75 x 30
4		16882515		1	PLUG, Plug
		4899115		1	O-RING, (Part of 16882515), Not Shown
5		2853671		1	HOUSING
7		2852519		1	O-RING
8		4895355		2	SCREW, Torx Rd Hd, M5 x .8 x 17
9		2855287		1	HOUSING, - ASSY

570MXT

CYLINDER BLOCK - COVERS



BS04A028

02-13

p1

03/08

**CYLINDER BLOCK - COVERS**

REF	FN	PART NUMBER	YR/SN	QTY	DESCRIPTION
1		4897024		1	COVER, Front Gear
2		4899078		5	SCREW, Hex Flg, M8 x 1.25 x 45
3		4899063		8	SCREW, Hex Flg, M8 x 1.25 x 30
4		4890832		1	SEAL
5		4891209		2	DOWEL

570MXT



This as a preview PDF file from [best-manuals.com](http://best-manuals.com)



Download full PDF manual at [best-manuals.com](http://best-manuals.com)