

FENDT 5270 C from serial No. 552310097

FENDT 5270 C-AL from serial No. 552410055

FENDT 6300 C from serial No. 563010120

FENDT 6300 C-AL from serial No. 563410051

**OPERATOR'S
MANUAL**

FENDT

TABLE OF CONTENTS

- 1. General Information**
- 2. Operation - Controls and Instruments**
- 3. Field Operations**
- 4. Lubrication and Maintenance**
- 5. Adjustments**
- 6. Troubleshooting**
- 7. Off-season storage**
- 8. Optional Equipment**
- 9. Technical Specifications**
- 10. Alphabetical Index**

CONTENTS

Section-Page

1. GENERAL INFORMATION

Customer information	1-1
Combine identification	1-3
Ecology: information for the prevention of environmental pollution	1-8
Safety	1-9
Emergency exit	1-31
Safety devices	1-32
Machine lifting	1-38
Appropriate use	1-39
Noise level in the cab	1-40
Fire resistance inside the cab	1-40
Statutory regulations	1-40
Vibrations in the cab	1-41
Hydraulic systems: hose safety requirements	1-41
Scrapping and disposal	1-42
Electromagnetic emissions	1-42
Notes for road transport	1-43
Weight distribution	1-45

2. OPERATION - CONTROLS AND INSTRUMENTS

Operation - Crop Processing	2-1
Steering column	2-5
Control Pedals	2-6
Multifunction lever	2-7
Gearshift lever and reversing lever	2-8
Control panel (5270 C and 6300 C models)	2-9
Control panel (5270 C-AL and 6300 C-AL models)	2-10
Agritronicplus	2-16
Levelling system	2-35
Cab	2-37
Access to combine components	2-46
Engine: starting	2-49
Stopping the engine	2-50
Driving the combine	2-51
Operations to be carried out before road transport	2-51
Before using the combine	2-53
Towing the combine	2-54
Moving the machine in emergency situations	2-54

3. FIELD OPERATIONS

General Information	3-1
Starting and Stopping the Combine	3-2
Cutting table	3-3
Main Crop Elevator	3-11
Cylinder Housing	3-17
Concave	3-18
Rear beater	3-23
Multi Crop Separator	3-24
Straw walkers	3-27
Main Grain Pan	3-28
Fanning mill	3-29
Top sieve	3-30
Bottom sieve	3-31
Returns	3-32
Grain tank	3-33

4. LUBRICATION AND MAINTENANCE

General information	4-1
Preliminary Service Inspection	4-2
Scheduled Service Inspection	4-3
Where and When to Carry Out Service Inspection	4-4
Routine Service Inspection	4-8
Scheduled Service Inspection	4-10
Capacities and Specifications (5270 C - 6300 C)	4-33
Capacities and Specifications (5270 C-AL - 6300 C-AL)	4-37

5. ADJUSTMENTS

Belt and chain adjustment	5-1
Belts and chains (left-hand side)	5-2
Belts and chains (right-hand side)	5-10
Slip clutches	5-16
Tyres	5-17
Brakes	5-21
Rear axle	5-22
Engine	5-25
Hydraulic System	5-28
Electrical System	5-30

6. TROUBLESHOOTING

Feeding	6-1
Threshing	6-1
Separation and cleaning	6-3
Hydrostatic Transmission	6-5
Engine	6-6
Hydraulic system	6-14
Levelling Hydraulics System	6-15
Electrical System	6-15
Air conditioning circuit	6-15
Straw Chopper	6-19

7. OFF-SEASON STORAGE**8. OPTIONAL EQUIPMENT****9. TECHNICAL SPECIFICATIONS**

Wheels and tyres	9-1
Combine Dimensions with Tyres (mm)	9-4
Combine Dimensions with Tracks (mm)	9-5
Tracks with runners	9-6
Clearance between unloading auger and table (mm)	9-7
Technical specifications - 5270 C - 6300 C	9-8
Dimensions of 5270 C-AL - 6300 C-AL models (mm)	9-14
Technical specifications - 5270 C-AL and 6300 C-AL models	9-15

10. ALPHABETICAL INDEX

1. GENERAL INFORMATION

1.1 CUSTOMER INFORMATION

INTRODUCTION

Your new self-propelled combine is manufactured for harvesting seed and cereal crops, for threshing, separating, cleaning and conveying the grain into the tank and depositing the straw on the ground.

This Operator's Manual contains all the necessary practical information on the operation, adjustment and maintenance of your new machine and should be used as a practical reference guide.

The combine is designed and built to ensure optimum performance, comfort and ease-of-operation in a wide variety of crops and conditions.

The combine has been thoroughly inspected prior to delivery both at the factory and by your Dealer, to ensure you receive it in perfect condition.

To keep the combine in perfect condition and to ensure trouble-free performance, the periodical maintenance operations listed in this manual should be carried out at the recommended intervals.

Before operating or driving the combine, read this Operator's Manual carefully, paying particular attention to the section on safety rules. Always keep this manual on hand for further reference.

The terms "left" and "right" are always used with reference to the travelling direction.

Should you require further information about the machine, please do not hesitate to contact your authorised Dealer. Your Dealer provides specially trained personnel, genuine quality spare parts and the required tools to solve any problems that may arise.

NOTE:

- This combine has been designed and built in compliance with the Machine Directive 98/37/EC. A CE Declaration of Conformity is supplied with the machine. The manufacturer disclaims all liability to any claim resulting from unauthorised modification or alteration.
- This manual is published for world wide distribution, and the availability of equipment shown as basic or accessory varies according to the territory in which the combine is to be used. Specifications may differ from those contained in this Operator's Manual according to the customer's requirements.
- In order to provide a better view, certain illustrations in this manual may show an assembly with standard guards, or the guards required by law in different countries, open or removed. **However, a machine should never be operated in this condition. For your own safety, always ensure all safety guards are closed and correctly fitted before operating the machine.**
- **This Operator's Manual, along with the Operator's Manual for table and PTO shaft, must always be kept in the pocket provided on the right-hand side of the operator seat for convenient reference..**

Modifications and improvements

In accordance with the Company's policy of continuous improvements to its products, the Company reserves the right to modify and improve its products whenever necessary and to the required extent, without any obligation to apply such modifications to previously sold products.

GENERAL INFORMATION

OPTIONAL EQUIPMENT

The machine has been designed to operate in a wide variety of crops and conditions. However, in certain cases it may be necessary to fit additional accessories to improve machine performance and adapt the machine to special crops or harvesting conditions. A list of available accessories is provided in the section "Optional Equipment".

SPARE PARTS AND ACCESSORIES

The genuine spare parts and accessories have been specifically designed for this type of machine.

Only genuine parts supplied by your authorised Dealer can guarantee correct operation and optimum performance.

Never use non-genuine spare parts or accessories: Some accessories (e.g. PTO shafts, straw choppers, tables) require a CE certification, which can be provided only by the manufacturer or his qualified and recognised sub-suppliers.

Non-genuine spare parts have not been tested and are not authorised by the manufacturer. The fitting and/or use of such equipment may have a damaging effect on the design features of the machine and jeopardise operational safety.

The manufacturer disclaims all liability in the event of loss or damage arising as a result of non-genuine parts or accessories being fitted.

It is expressly prohibited to make any modification to the combine without the prior written authorisation by the manufacturer.

When ordering spare parts and/or optional equipment, always quote combine model and serial number (see section "Combine Identification").

WARRANTY

Your combine is warranted in compliance with the regulations in force in your country and the agreements made with your Dealer.

However, the warranty becomes void in the following situations:

- a.) If the machine has been used inappropriately.
- b.) If adjustments and maintenance have not been carried out according to the instructions in this manual.
- c.) If the failures are caused by the use of non-genuine spare parts or accessories.
- d.) If damage is the result of carelessness, negligence, inappropriate use of the machine or operational errors.

If the safety devices are removed, the warranty becomes void automatically and the manufacturer disclaims any liability. The warranty also becomes void if non-genuine spare parts are used.

The warranty applies only to repair or free replacement of parts proving defective after a careful inspection by the manufacturer (excluding wear parts and tyres), as described in the Combine Service Record Book. In the event that warranted parts are replaced or repaired, warranty terms are not extended. The customer can assert his warranty rights only insofar as the warranty conditions contained in the Service Record Book have been observed.

LUBRICANTS

Your Dealer can provide a wide range of special lubricants, produced according to the specific technical specifications of the combine.

For these combines, we recommend the use of the lubricants listed on page 4-33 (5270 C and 6300 C models) and on page 4-37 (5270 C-AL and 6300 C-AL models).

Always use genuine **AGCO** parts.



1.2 COMBINE IDENTIFICATION

The combine and its main components are identified by serial numbers and/or production codes. The position of the different identification data is described below.

NOTE: Always quote the combine serial number in any communication to your Dealer.

Combine type plate

Fig. 1 and Fig. 2

The manufacturer's type plate (1), statutory for all countries (or (2), for France only), is positioned on the outer right-hand side of the operator platform and shows the following information:

- Combine type.
- Combine serial number.
- Manufacturing year.
- Weight.
- Engine power in kW and rpm according to ISO/TR 14396.
- CE marking.
- Road type approval number, where applicable.

For further details, please refer to the type approval certificate.

In certain countries (e.g. Russia) the manufacturer's type plate is positioned next to a decal/plate (3) corresponding to the type approval.

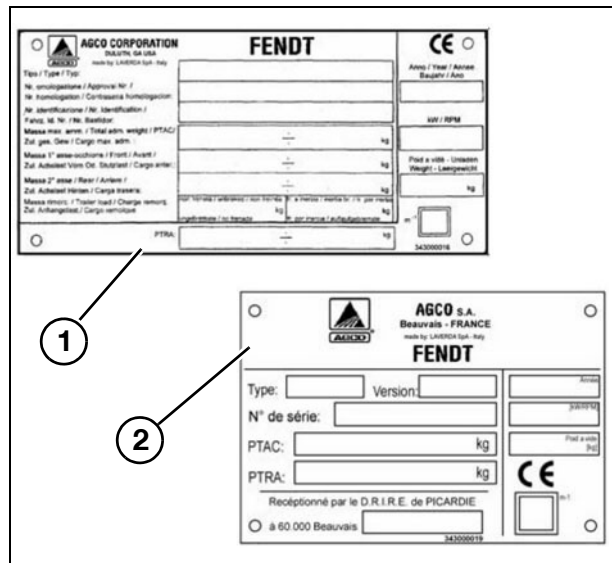


Fig. 1

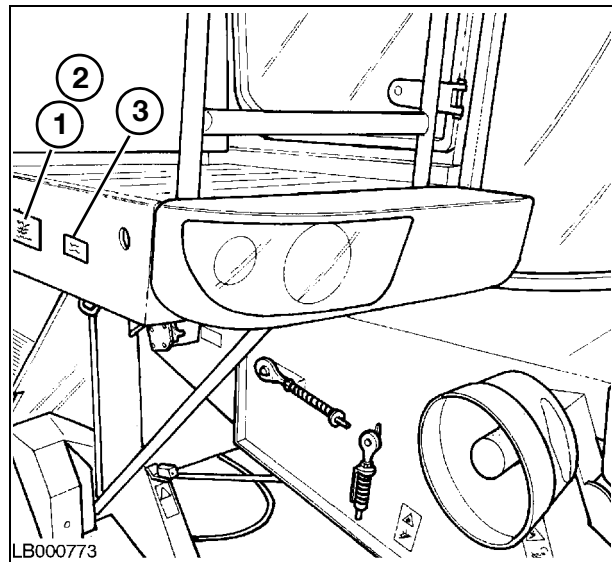


Fig. 2

Combine identification details

Fig. 3

Combine type and serial number appear on the plate and are also punched into the rear right-hand side of the frame (1).

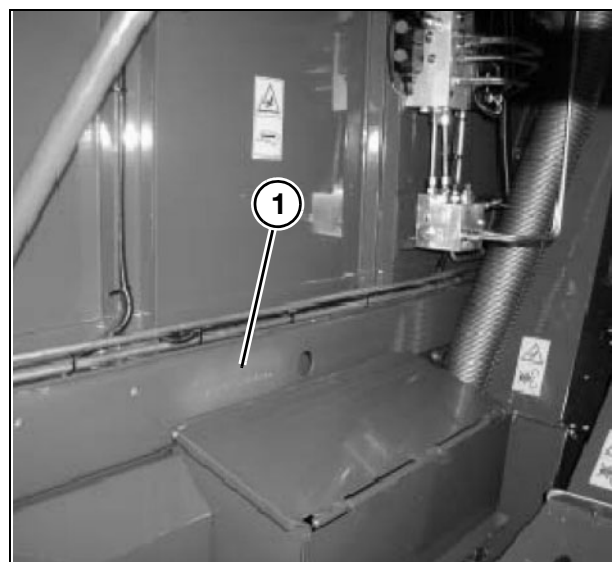


Fig. 3

GENERAL INFORMATION

Engine Identification

Fig. 4 and Fig. 5

The engine is identified by the type plate (1) in the middle of the cylinder block.

The following information appears on the plate (1):

- Engine manufacturer
- Engine type
- Engine power and rated speed
- Engine serial number
- Valve clearance
- Injection timing (static)
- Idling speed
- 97/68 EC approval engine family code
- EPA 40 CFR 89 approval family code
- 97/98/EC approval number
- Name of the engine assembler.

The engine serial number is always stamped on the cylinder block as illustrated (black arrows).

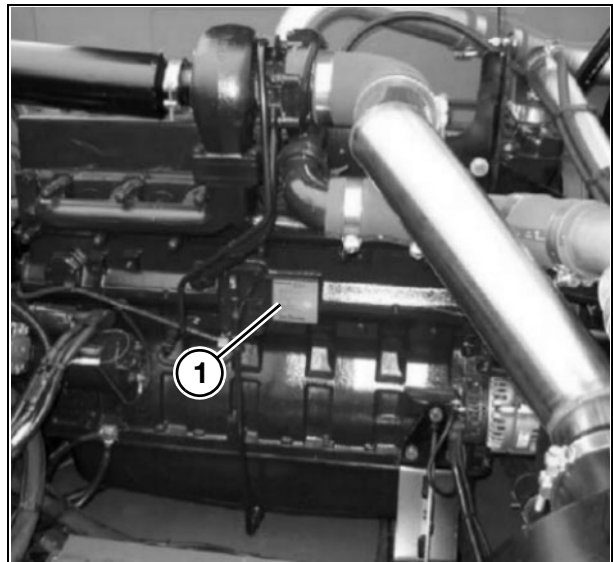


Fig. 4

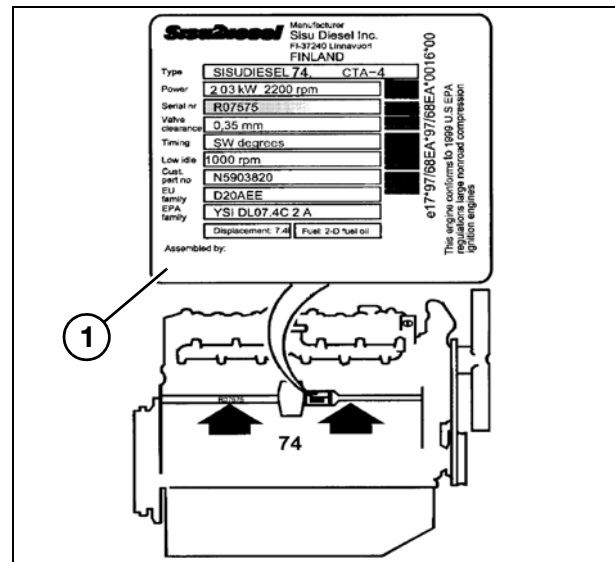


Fig. 5

Cutting table identification

Fig. 6

The cutting table is identified by a metal plate positioned on the left-hand side of the table body.

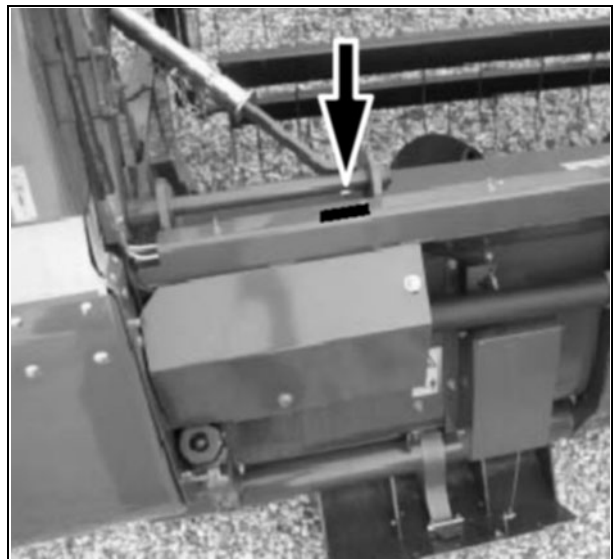


Fig. 6

Cab identification

Fig. 7

The type plate is located on the outside of the cab, in the bottom left-hand corner.

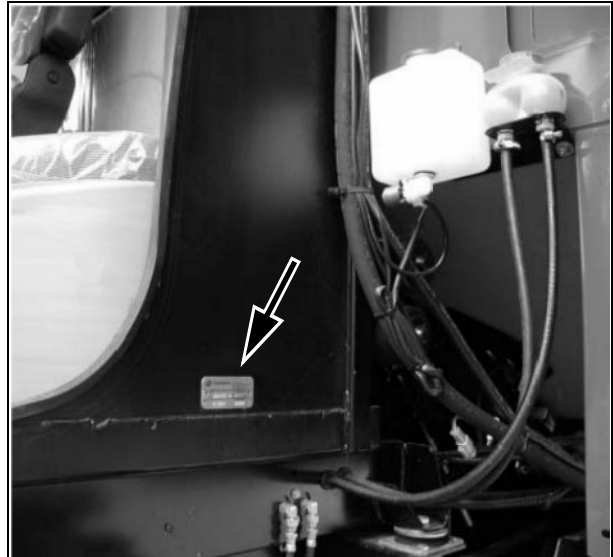


Fig. 7

Hydrostatic pump identification

Fig. 8

Identification of the hydrostatic pump is facilitated by means of a plate located on the pump body front part.

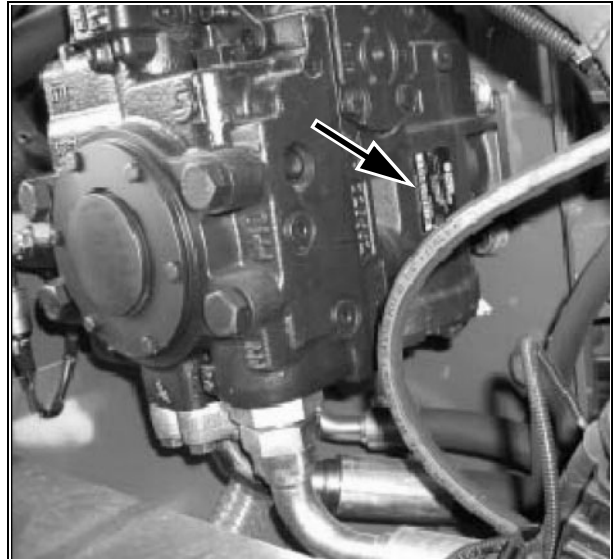
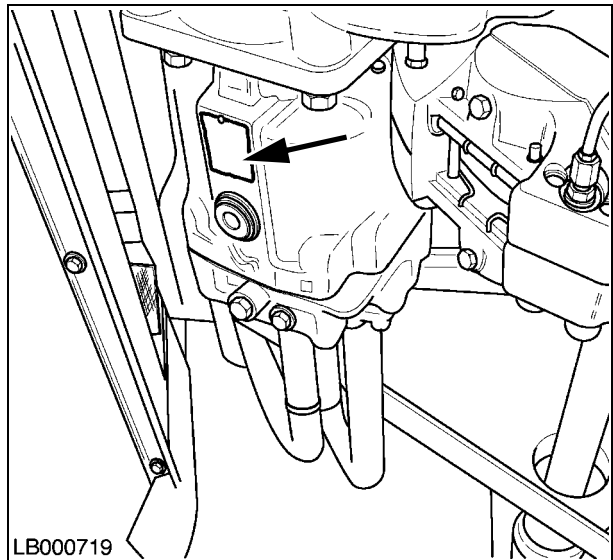


Fig. 8

Hydrostatic motor identification

Fig. 9

Identification of the hydrostatic motor is facilitated by means of a plate located on the motor body lower part.



LB000719

Fig. 9

GENERAL INFORMATION

Straw chopper identification (if fitted)

Fig. 10

The straw chopper type plate is located on the right-hand side next to the rotor support.

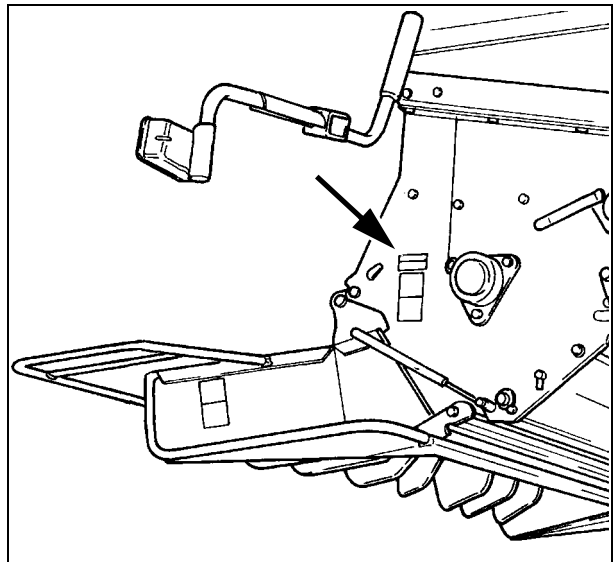


Fig. 10

Chaff spreader identification (if fitted)

Fig. 11

The type plate is located on the right-hand side next to the chaff spreader adjustment lever.

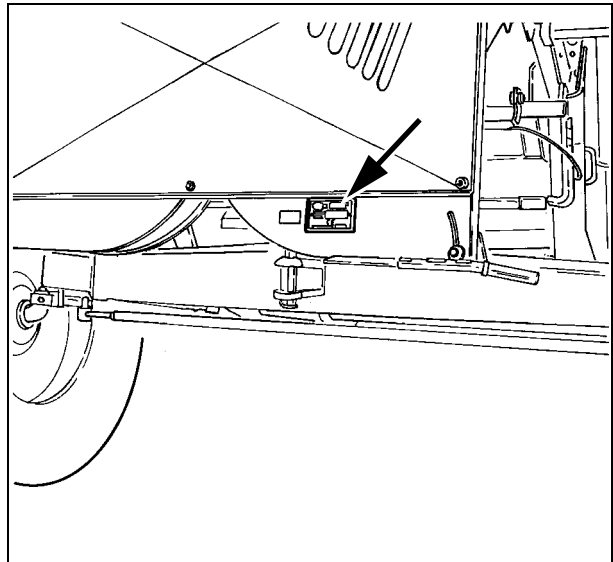


Fig. 11

Rockinger trailer hitch identification (if fitted)

Fig. 12

The plate is positioned on the top part of the Rockinger trailer hitch.

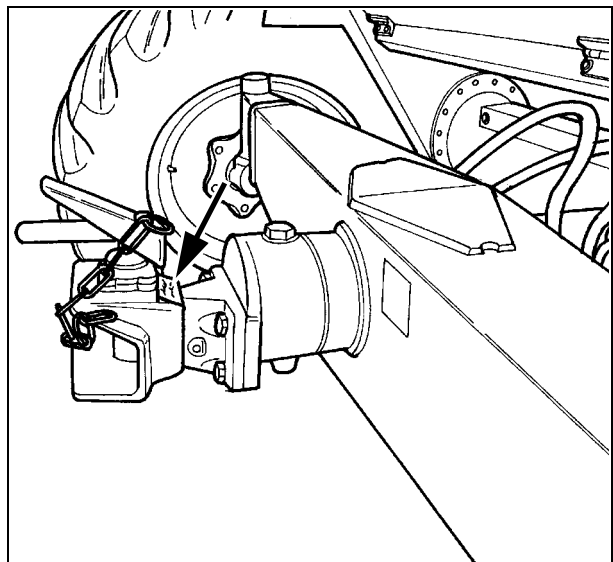


Fig. 12

Please enter the identification details of your combine for convenient reference:

Combine model
Combine serial number
Engine type and serial number
Cab serial number
Straw chopper serial number
Cutting table serial number
Date of initial startup
Dealer's telephone number

TABLE TYPES

C series combines can be equipped with a 4.80, 5.40, 6.00, 6.60 or 7.60 m cutting table.

NOTE: *In this manual, the term "table/s" signifies both the cutting table and the maize header when used generically. The term "cutting table" refers to the assembly consisting of reel, cutting bar, table auger, etc. used to harvest cereal, rice, soya, etc. The term "maize header" refers to the assembly consisting of stalk grippers, stripping blades, conveyor chains, etc. used for harvesting maize.*

1.3 ECOLOGY: INFORMATION FOR THE PREVENTION OF ENVIRONMENTAL POLLUTION

Soil, air and water are essential to agriculture and to all life on earth. **PROTECT THEM.** In areas where no local regulations impose standards for the use and disposal of chemicals and petrochemical products required by modern technology, all necessary precautions must be adopted to avoid any risk of pollution.

The following guidelines may be helpful:

- Find out about the legal requirements in your country and comply strictly with them.
- If no regulations are in force, ask your Dealer about the effects of lubricants, fuels, antifreeze mixtures, cleaners, etc. on people and environment; also ask how to store, use and dispose of such products correctly. In most cases, agricultural advisers will be able to answer your questions satisfactorily.

Instructions:

- 1.) When refuelling the machine, take all necessary precautions to avoid fuel spillage. In particular, avoid using pressurised containers or fuel supply systems, as these are unsuitable.
- 2.) As a rule, avoid any skin contact with liquid fuels, lubricants, acids, solvents, etc. Most of these products contain substances potentially injurious to health.
- 3.) **Do not dispose of lubricants by burning (they contain substances which may evolve gases injurious to health).**
- 4.) Whenever possible, use biodegradable oil for lubricating the chains, as this oil cannot be collected.
In many countries, biodegradable rape oil and other vegetable lubricants are available on the market.
- 5.) Avoid spillage while draining oil, brake fluid, coolant etc. from the engine, gearbox and hydraulic system. Collect the fluids in suitable containers and dispose of them properly, according to regulations in force.
- 6.) Modern coolants and mixtures, e.g. antifreeze and other additives, must be replaced every two years. Never let them drain into the ground; collect and dispose of them safely.
- 7.) Never open or modify the air-conditioning system. It contains gases which must not be released in the atmosphere. Contact your Dealer or a specialist who has the correct equipment for emptying and recharging the system and for carrying out any required maintenance or repair.
- 8.) Immediately repair any leaks or defects in the engine cooling or hydraulic system to prevent any risk of pollution.
- 9.) Never increase the pressure in a pressurised system. This may cause the components to burst.
- 10.) When welding, protect the hoses properly against welding spatters that could damage or weaken hoses and sleeves, resulting in oil and coolant leaks.

1.4 SAFETY

Accidents can be prevented with your help.

All accident prevention depends on the full cooperation of the persons using or involved with service or maintenance of the machine.

Most accidents can be avoided by observing simple safety rules.

The safety system is only as comprehensive as the operator allows in practising caution whenever running or servicing the machine.

Some of the illustrations contained in this manual pertain to combine models of the same series, which may be differently equipped. This means that apparent discrepancies may result between any particular combine and those depicted in this manual.



This symbol is used in this manual whenever your safety is involved.

**ATTENTION! BECOME ALERT! READ AND FOLLOW THE INSTRUCTIONS!
YOU CAN NEVER BE TOO PRUDENT.**

IN ORDER TO PROVIDE A BETTER VIEW, CERTAIN PHOTOGRAPHS OR ILLUSTRATIONS IN THIS MANUAL MAY SHOW AN ASSEMBLY WITH THE SAFETY GUARDS OPEN OR REMOVED.

ENSURE THAT ALL GUARDS ARE FITTED AND CLOSED PRIOR TO MACHINE OPERATION.

WARNING SYMBOLS AND SAFETY INSTRUCTIONS

Personal Safety

Three types of warning signs appear in this manual and on the decals applied to the machine ("CAUTION", "WARNING" and "DANGER"), followed by specific instructions or decals with symbols clearly illustrating the type of hazard. These instructions involve your safety and the safety of people working nearby.

Pay particular attention to these warnings.



CAUTION: *Indicates a potentially dangerous situation which, if not avoided, may result in minor injuries.*



WARNING: *Indicates a potentially dangerous situation which, if not avoided, may result in serious injuries.*



DANGER: *Indicates a potentially dangerous situation which, if not avoided, may result in very serious injuries or even death.*

FAILURE TO FOLLOW THE INSTRUCTIONS RELATED TO THE TERMS "CAUTION", "WARNING" AND "DANGER" MAY RESULT IN SERIOUS INJURIES OR EVEN DEATH.

Machine safety

Other types of advice ("**NOTE**", "**IMPORTANT**" and "**ATTENTION**") are followed by special instructions referring to the safeguarding of the machine.

NOTE: *Highlights and describes correct techniques or procedures to be adopted by the operator.*

IMPORTANT: *Informs the operator of procedures that may prevent damage to the machine.*

ATTENTION: *Informs the operator that unless a special procedure is followed, severe damage could be caused to the machine.*

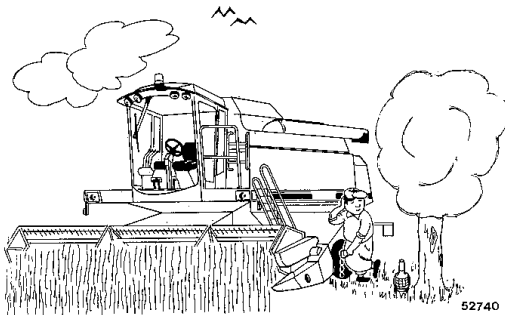
SAFETY PRECAUTIONS

Most agricultural accidents can be avoided by observing simple safety rules.

ROAD TRANSPORT

Combine road transport

- 1.) The combine may be operated only by responsible personnel, trained and authorised to work with the machine. Avoid operating the combine when physically unfit; it is better to interrupt work than to risk an accident.



- 2.) In many countries (e.g. Italy and France) a driving licence is required if the combine is to be driven on public roads.
- 3.) Operators should familiarise themselves with the provisions of the Road Traffic Acts and of the regulations thereunder in order to ensure that, when taking the combine on public roads, they comply with the relevant statutory requirements. They should keep a suitable speed for road and traffic conditions and ensure that all the machine safety devices (if required) are fitted and working properly.

The grain tank must be empty and the unloading auger must be turned in.

- 4.) For safety reasons, the two brake pedals must be latched when travelling on roads. To hold the machine on inclined ground, the brakes must be used (the braking effect of the hydrostatic drive, only, is not sufficient).

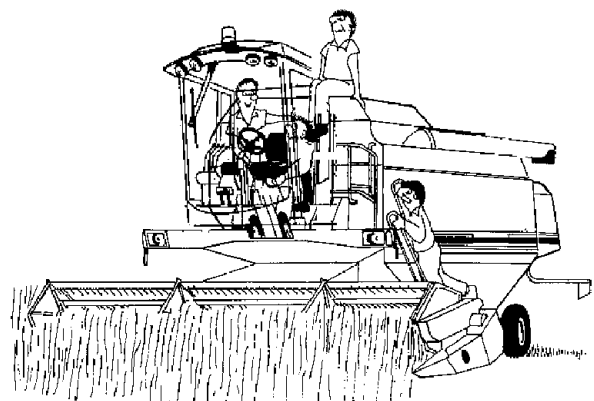


- 5.) When travelling on roads, make sure that the rotating beacons and the other additional signals required to warn that the vehicle is abnormally large and slow-moving, are working properly.
- 6.) When driving on roads, turn the cab access ladder forward. When entering and leaving the combine always use the ladders, handrails and the handles provided. It is strictly forbidden to ride on the access ladders to the cab, engine compartment and grain tank when the machine is moving.
- 7.) On the left-hand side of the operator seat there is an additional seat that can be used by a trainee during harvest. **No other persons are allowed on the machine.**

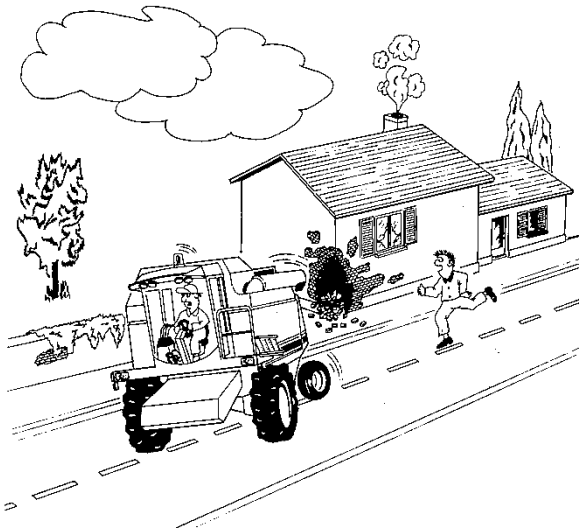


CAUTION: This seat is not intended for children.

In road transport, one person employed for agricultural jobs is allowed in the passenger seat, provided this is permitted by local regulations and provided that a seat for transport of a passenger on public roads is in accordance with the combine documentation.



- 8.) It is advisable to keep a first-aid kit on hand.
- 9.) Do not brake abruptly as this could cause the machine to swerve.
- 10.) When driving downhill, never exceed 20 km/h and always stay in gear; never change into neutral.
On steep slopes, change into a lower gear: please see relevant specifications on page 1-37 of this section.
Gradually engage the multifunction lever. Avoid abrupt turns when driving up or downhill or across steep slopes.



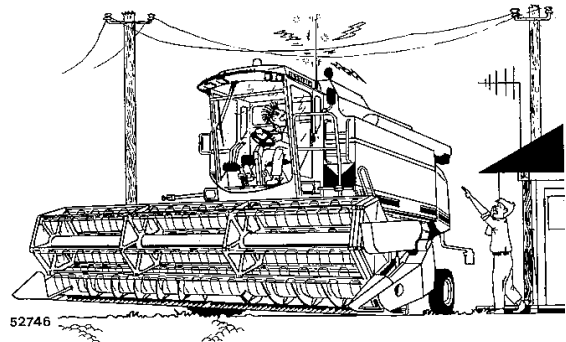
- 11.) In countries where travelling on roads with the table attached is allowed when circumstances permit, the table must be secured against lowering by engaging the safety stops on the hydraulic cylinders and locking the main crop elevator adapter.



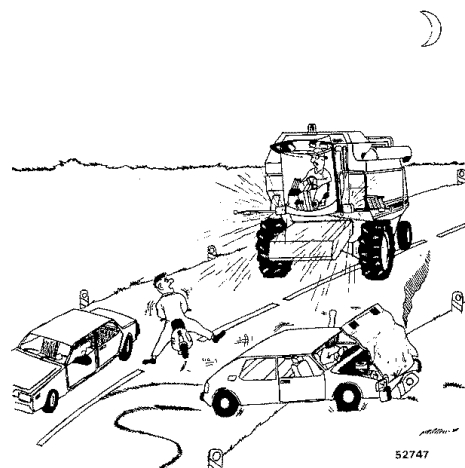
DANGER: Risk of electrocution.

- 12.) Beware of overhead lines and check that the combine can easily pass under without touching the lines, particularly if equipped with an antenna. Take particular care when driving through underpasses; make sure the machine is able to pass through easily. In case of contact between the machine and the power supply line, the following procedure must be adopted:
 - a) Disengage all drives.
 - b) Switch off the engine.
 - c) Apply the parking brake.
 - d) Ensure that you can leave the operator seat safely without touching the electrical cables.
 - e) Jump from the last step, making sure there is no contact of body parts, ground and machine.

- f) Do not touch the machine until the power has been cut off. Anyone approaching the machine must be informed not to touch it.
- g) Ask the power station to cut off the power.



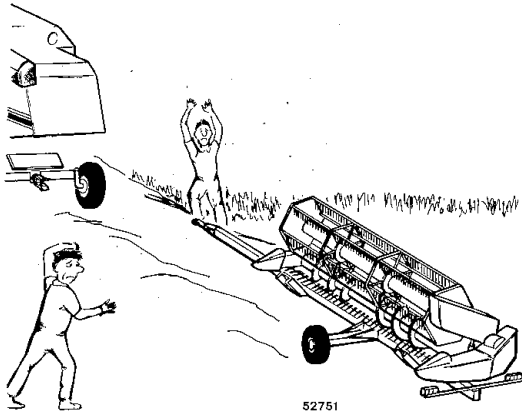
- 13.) When driving on the road at night, the front headlights must be dipped so that the low beam line hits the ground no further than 10 m in front of the vehicle. The rotating beacons must always be operating, even when there is no need for visual signalling and lighting devices. Switch off the work lights.



- 14.) Before driving on public roads, ensure the machine is equipped for road transport (see page 2-51).

GENERAL INFORMATION

- 15.) When driving on public roads towing the cutting table, ensure that the local traffic regulations (lights, correctly fitted trailer hitch etc.) are complied with. Ensure the cutter bar protection shield is fitted.



drive, pull the multifunction lever slightly backward until the drive engages, switch off the engine and lock the parking brake. Get off the machine and place sprags (if available) or a solid object of a suitable size in front of the traction wheels.

- Uphill parking: Engage the first gear, push the multifunction lever forward until the drive engages, switch off the engine and pull the parking brake. Get off the machine and place sprags (if available) or a solid object of a suitable size behind the traction wheels.

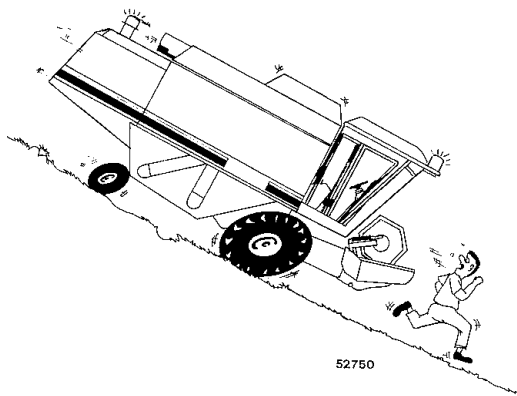
In any case, before leaving the combine unattended, switch off the engine, remove the ignition key and lower the cutting table.

Parking the Combine



DANGER: Risk of squeezing, cutting or getting trapped.

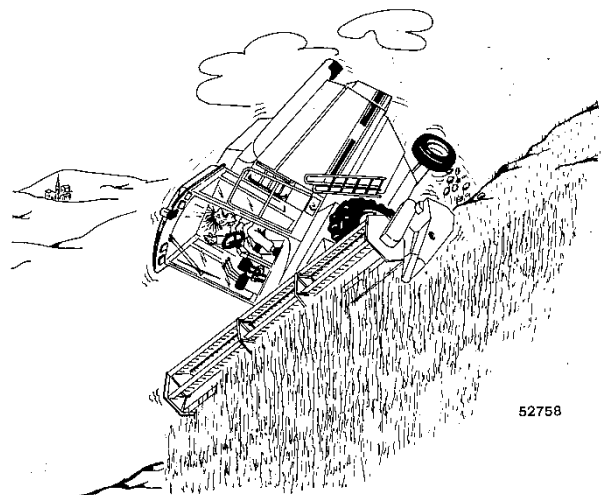
- 1.) Never leave the cutting table in raised position when the combine is stationary.



- 2.) Always park the combine on level ground. If parking on level ground is not possible, park the combine across the slope, engage first gear and apply the handbrake before stopping the engine. If it is not possible to park as described above, proceed as follows:

- Downhill parking: Engage the lowest reverse gear. On machines with hydrostatic

Always keep the parking brake in good repair to ensure it is capable of holding the machine on inclinations up to 18-20% max. both uphill and downhill when the grain tank is empty. Sprags under the wheels will hold the machine uphill and downhill provided the ground is sufficiently firm. Sprags are supplied even for countries where they are not required by law. The sprags may be used only as additional safety not as parking means, on inclinations of more than 18-20%.

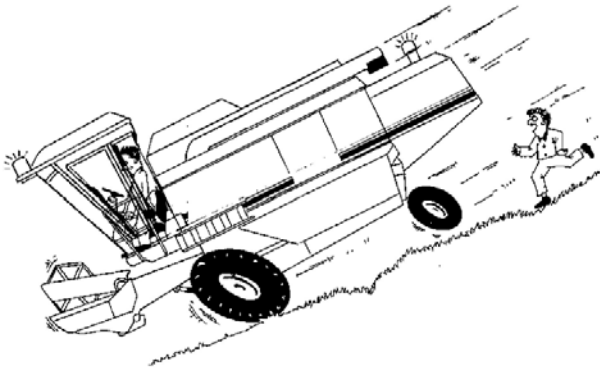


FIELD OPERATIONS



DANGER: To provide a better view, certain illustrations in this manual show the machine with the safety guards removed. However, the machine should never operate in this condition. Keep all guards in place.

- 1.) Before starting work the operator should familiarise himself thoroughly with all machine controls.
- 2.) Always drive the combine at a speed which, depending on ground conditions, provides the necessary safety. When working **on rough ground** proceed with greatest care reducing speed to ensure stability.



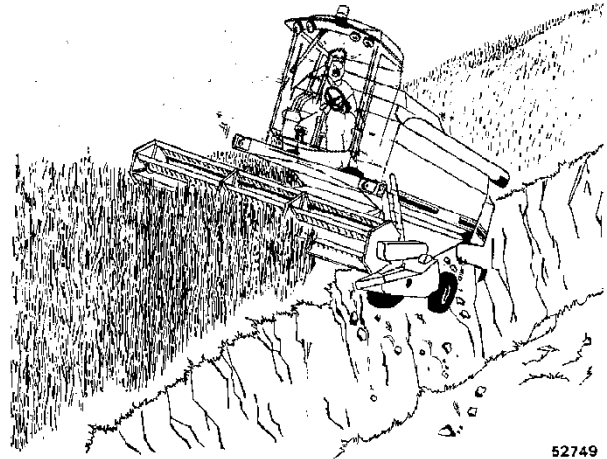
DANGER: Risk of overturning.

- 3.) When taking the combine to work on slopes, the operator must be thoroughly familiar with machine controls and with working on sloping grounds. Drive at slow speed, in particular while turning and when the grain tank is full. **Ensure that the ground is sufficiently firm with no sudden surface changes and that the tyres have enough grip on the ground.**



DANGER: Risk of electrocution.

- 4.) Beware of overhead lines and check that the machine can easily pass under without touching the lines, particularly if the unloading tube is turned out (see page 1-11).
- 5.) Proceed with greatest care when working with the wheels **close to the edge of ditches or steep drops.**



52749

- 6.) If the machine tends to tilt forward when working on slopes, lower the cutting table completely.
- 7.) **Avoid turning at high speeds.**



DANGER: Risk of squeezing, cutting or getting trapped.

- 8.) If any moving part becomes blocked or jammed, **release it only when the engine is switched off and all drives have come to a complete stop. Never push the crop into the main crop elevator by hand or feet. This could result in danger to life or severe injury.**



DANGER: Risk of breathing in dust.

- 9.) Threshing dust may cause allergic lung diseases. The dust may also contain residues of pesticides injurious to health. Keep the cab door shut when threshing. Wear a protection mask when carrying out service work involving exposure to dust (cab filters, rotary screen etc.) and when working with compressed air.
- 10.) Keep a fire extinguisher within easy reach. Check the extinguisher at the intervals prescribed by national law. Replace or recharge it whenever it has been used, even if only partially.
The type of extinguisher approved for Europe contains 6 kg of extinguishing agent and belongs to fire class ABC.
A 160 mm Ø extinguisher is recommended since a suitable bracket is already fitted on the machine, near the hydraulic control valve.

MAINTENANCE WORK

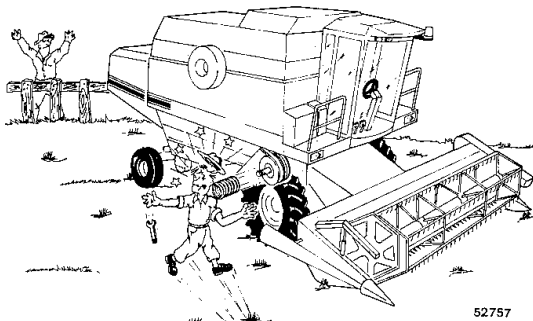
Work on the Machine

- 1.) Before inspecting, cleaning, adjusting or servicing combine and table (grain or maize), always ensure that the engine is stopped, the brakes are applied and all moving parts have come to a complete stop.
- 2.) To lift one side of the machine (for example to remove a wheel), use lifting equipment with suitable capacity, e.g. a column hydraulic jack or a lift with a minimum capacity of 10,000 kg.
- 3.) Pay special attention while removing preloaded parts.



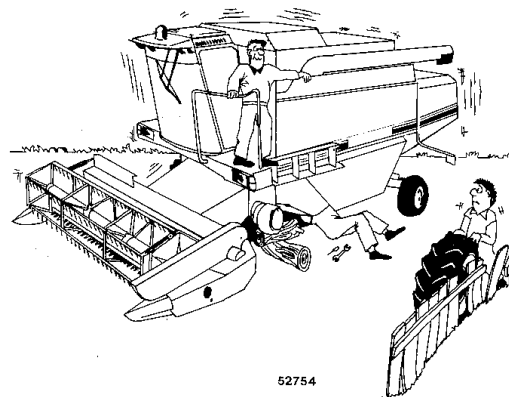
DANGER: Risk of shocks.

It is strictly forbidden to loosen the nut fastening the cylinder variator pulley without using proper tools. This operation may be carried out only by your Dealer's skilled staff.



52757

- 4.) Work on tyres requires correct tools and expert knowledge. **An incorrect assembly can seriously compromise your safety.** When in doubt, refer to specialised staff.
- 5.) Before refitting the wheels, ensure that the contact surfaces of wheel rim and final drive hub are perfectly clean (remove paint); check that the thread of bolts and nuts is in perfect condition. The front wheel nuts must be tightened to 550 Nm (56 kgm) crosswise and the rear wheel nuts to 304 Nm (31 kgm). Check that the nuts are sufficiently tightened after the first working hours and then at least every 80 hours. It is advisable to check, at least once a day, that no parts are loose.



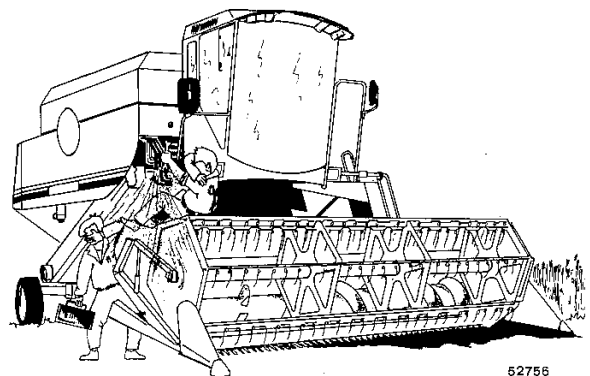
52754

- 6.) Do not carry out any work (inspection or maintenance) on the machine when the wheels have been removed, unless the machine is properly supported.



DANGER: Risk of high pressure fluid splashes.

- 7.) The hydraulic, hydrostatic and diesel oil injection systems can be pressurised. Maintenance work on the systems may be carried out only by specially trained staff.



52756

- 8.) Before working on any part of the electrical system, remove the battery ground cable or switch off the main battery switch.

- 9.) When carrying out **welding** on the machine, heat and welding splatters may cause serious damage. If possible, have this work carried out by skilled staff.

To prevent damage to the engine electronic components, remove the specific component from the combine and weld it separately.

If the component cannot be removed, proceed as follows:

- a) **Stop the engine.**
- b) **Disconnect the negative cable from the battery.**
- c) **Detach the ECU shield.**
- d) **Disconnect all of the harnesses from the ECU.**
- e) **Tie up the harnesses to the machine so that they cannot touch the ECU.**
- f) **Connect the welder ground cable as close as possible to the area where the welding is to be carried out.**
- g) **Protect hydraulic and electric components exposed to welding spatters.**

- 10.) After any maintenance or repair work, collect all tools used and store them in the toolbox on the combine. Always check the combine for loose parts, and ensure all guards have been correctly reinstalled.

- 11.) Before starting the combine, make sure all guards are fitted and that safety guards with locks are properly secured. These guards can be opened with a tool or with the suitable key supplied with the ignition key. Also check table, grain tank and sieves for loose/disassembled parts.



DANGER: Risk of shocks, squeezing or getting trapped.
Always sound the horn three times to warn persons nearby of your intention to start the engine.

- 12.) Before starting the engine, make sure no one is carrying out service or inspection on the machine or standing in the combine operating range.

- 13.) Always keep children away from the combine.

- 14.) Check wheel nut torque after the first hours in operation, as described in section "PRELIMINARY SERVICE INSPECTION" (page 4-2) and after any maintenance work involving dismounting of wheels. **It is good practice to check daily that the nuts have not loosened or become defective in any way.**



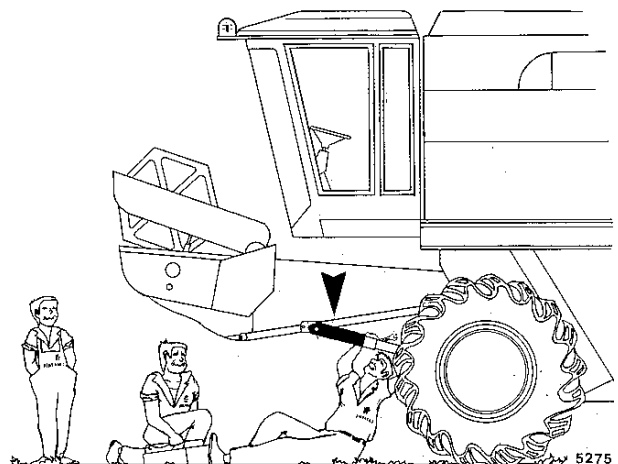
DANGER: Risk of shocks, squeezing or getting trapped.

- 15.) It is strictly forbidden to enter the grain tank without stopping the engine and removing the ignition key from the switch. Before inspecting, cleaning, adjusting or servicing combine and table (grain, maize etc.), always ensure that the engine is stopped, the brakes are applied and all moving parts have come to a complete stop.



DANGER: Risk of squeezing.

- 16.) Never work under the cutting table without securing it firmly and/or engaging the safety stops on the crop elevator lifting rams.

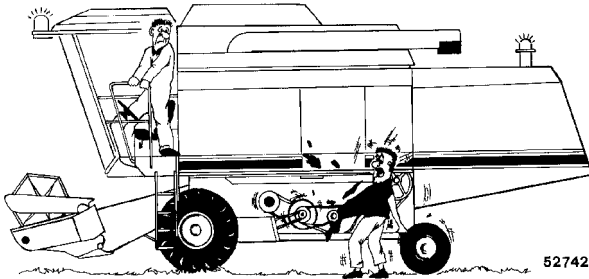


GENERAL INFORMATION



DANGER: Risk of getting trapped.

- 17.) Never work on the machine wearing loose clothing that could get caught in a moving part. Check that all rotating parts are protected with safety guards.



- 18.) Keep clear of all moving parts on the machine and particularly on the table.

- 19.) After any lubrication, adjustment or repair work, always refit all safety guards. Replace or repair missing or damaged safety guards immediately.



DANGER: Risk of falling.

- 20.) Do not step onto the grain tank cover or cab roof. To reach high areas (for example inspection lids on the unloading tube) use the access ladder for the engine area.

- 21.) While operating the combine, pay special attention to correct function and the efficiency of the braking system, checking the oil level in the tank and replacing friction pads before they wear out completely.

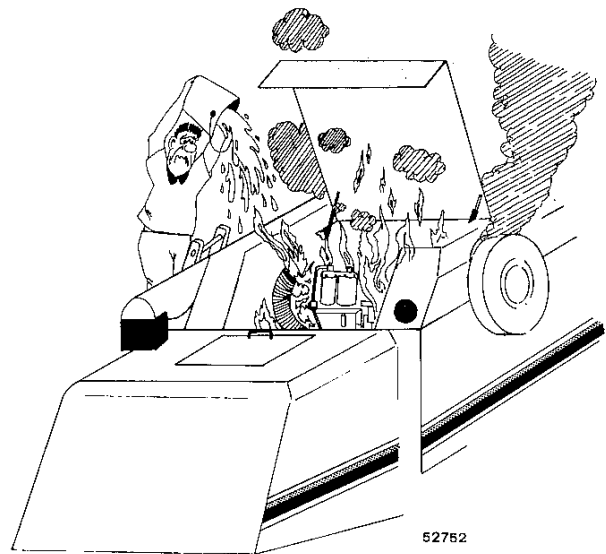


DANGER: Risk of explosion.

- 22.) It is strictly forbidden to modify a hydraulic accumulator by mechanical machining, welding, etc. For the accumulator inspection or replacement, refer to your local Dealer.

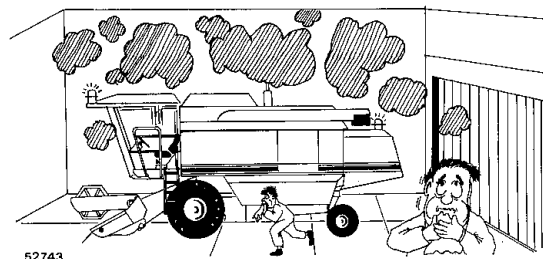
Engine

- 1.) Never start the engine if battery recharging equipment is connected to the machine.
- 2.) Always keep the engine and the engine compartment clean. Dust, diesel oil, oil and accumulated straw are highly flammable. For the same reason, also keep the transmission housing and the brake system clean.



DANGER: Risk of breathing in toxic gases.

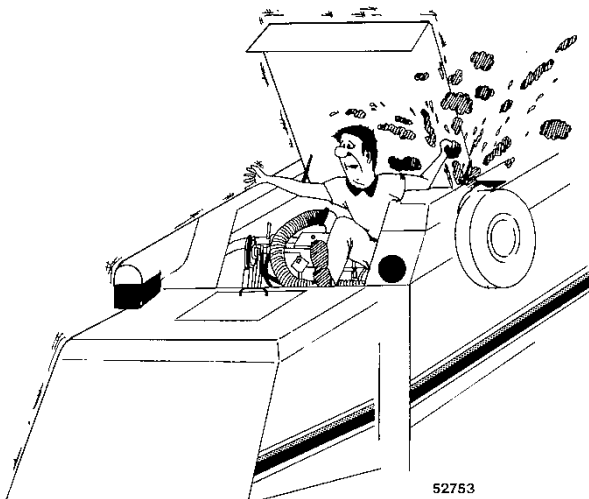
- 3.) Never operate the engine in an enclosed area without ensuring proper ventilation, since highly toxic exhaust gases are generated.



- 4.) Wear hearing protectors (ear muffs or plugs) if exposed to irritating noise.



- 5.) The cooling system is pressurised, and the pressure is checked at the radiator plug or the radiator expansion tank. **Removing the cap when the engine is hot is extremely dangerous. Switch off the engine and wait until it has cooled down sufficiently.** Even when the engine is cold, remove the cap with extreme caution covering it with a cloth and turning it slowly to the first stop to release pressure before removing it completely. Coolant may be added only when the engine is switched off and cold. **Failure to comply with these instructions may cause severe burns by sprays of liquid or steam, and damage to the engine cooling system.**



- 6.) The coolant (antifreeze) contains monoethylene glycol and other chemicals which are toxic if ingested; prolonged contact with the skin should also be avoided. When working with antifreeze, take the following precautions:

- Use rubber gloves and goggles to prevent injury from splashes.
- Do not ingest the solution. If swallowed, see a doctor immediately.
- If any part of the body should come into contact with the solution, wash immediately under running water.
- Keep the antifreeze in sealed containers, out of reach of children, livestock and pets.



DANGER: Risk of burning and scalding.

- 7.) The diesel oil in the injection system is pressurised and sprays may penetrate your skin. The injectors or other parts of the injection system must not be modified, opened or repaired by unauthorised personnel. Non-compliance with this precaution may result in serious injuries.
- 8.) In any event, avoid contact with hot engine oil. If the oil is very hot, let it cool off to a moderate temperature before draining it.
- 9.) Replace the oil filter only when the engine is cold and under no circumstances with bare hands, to avoid contact with the oil.
- 10.) Continuous contact with used engine oil may cause skin cancer. Protect your skin with rubber gloves, specifically suited for mineral oils. If the oil should come into contact with your skin, wash immediately in running water and soap; never use solvents.

GENERAL INFORMATION

Diesel oil



DANGER: Risk of explosion.

- 1.) Petrol, alcohol or mixtures of combustible oils or fuels should under no circumstances be added to the diesel oil. Mixtures of this type can generate unpredictable hazards and increase the risk of fire or explosion. **When shut up in the fuel tank, these mixtures can be more explosive than pure petrol. Never use these mixtures for any reason whatsoever.** Special additives may be added only if expressly approved by your local Dealer.
- 2.) Never open the tank cap when the engine is running or still hot. Under no circumstances refuel when the engine is running or still hot. Smoking and naked flames should be avoided when refuelling.
- 3.) When refuelling, keep an eye on the fuel filler pipe nozzle at all times.
- 4.) Do not top up the tank completely, leave room for the fuel to expand.
- 5.) Immediately wipe up any traces of spilled fuel.
- 6.) Always tighten the tank cap securely.
- 7.) If the original fuel tank cap is lost, replace it only by a cap approved by the manufacturer. Another type of cap may not provide adequate safety.
- 8.) Refuelling systems must always be kept clean and operational.
- 9.) Never operate refuelling systems next to naked flames.
- 10.) Never use diesel oil for cleaning purposes.

Battery



The battery contains an electrolytic solution with sulphuric acid, which may cause burns and produce serious explosions. Avoid contact with skin, eyes and clothing. Do not ingest. During recharging, hydrogen may be released (the gas is explosive in certain concentrations and when kept in enclosed areas).

Respect the basic precautions listed below:

- **Do not approach sparks, flames and cigarettes or other incandescent material to the battery.**
- **Avoid producing sparks with the cable terminals when charging the battery or when starting the engine with an auxiliary battery.**
- **Wear safety goggles and rubber gloves suited for use with acids when working near the battery.**
- **When charging the battery in an enclosed area, make sure it is properly ventilated.**
- **Before recharging, remove the plugs and check the liquid level; top up, if required.**
- **Make sure the plugs are fitted correctly and properly tightened to the battery.**

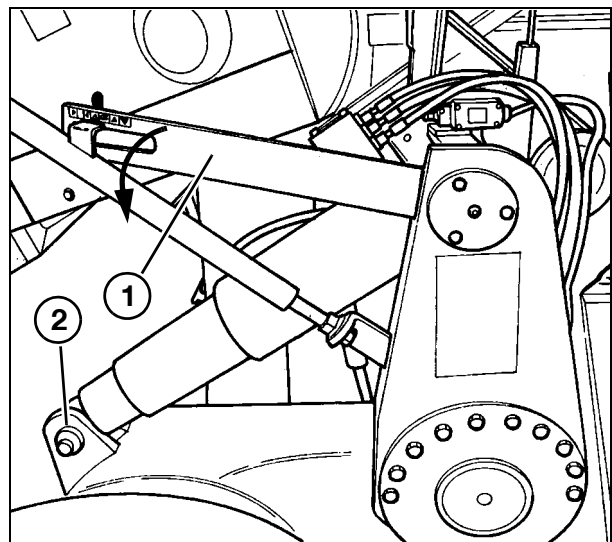
If electrolyte gets in contact with your skin, eyes or is ingested, proceed as follows:

- Skin = wash in abundant cold running water.
- Eyes = wash immediately in abundant cold running water for at least 15 minutes and call a doctor immediately.
- If swallowed = call a doctor immediately.

To replace the battery, see page 5-39.

Special notes on the 5270 C-AL and 6300 C-AL models

- 1.) Note the working conditions for C-AL combines on firm ground when levelling is activated:
 - Crosswise 20%
 - Lengthwise 8%
- 2.) Pay attention to the slope and the type of ground, as this could reduce the machine grip; on rough ground, drive carefully and reduce speed.
- 3.) **Never exceed permitted limits during crosswise levelling; this is signalled by the buzzer and the light indicator. Only work if the machine body is vertical; it is extremely dangerous to drive when the machine is inclined to one side.**
- 4.) Never exceed the working limits for downhill operation; these are signalled by the light indicator. If the machine tends to lift at the rear, whatever the situation, lower the cutting table completely.
- 5.) Preferably work in crosswise passes; **when changing direction, always point the cutting table uphill.**
- 6.) Make no sudden turns, especially when the grain tank is full: **Note that the levelling system has a technical response time.**
- 7.) Couple the brake pedals to prevent braking errors. Keep the braking system perfectly efficient. Check the oil level in the tank frequently and replace the friction pads before they are completely worn.
- 8.) Change direction on flat ground or where there is only a slight gradient.
- 9.) **Overconfidence in the use of the combine can result in a lack of attention and can therefore create dangerous situations.**
- 10.) **Frequently check the efficiency of the manual levelling systems, as they must provide additional safety in case the automatic levelling is deactivated: Note that the manual systems override the automatic systems, although they are not normally in operation.**
- 11.) Never operate the machine, not even for a short time, when it is manually inclined on flat ground, as the engine lubrication may be inadequate.
- 12.) Check tyre pressure: Insufficient pressure endangers tyre integrity, with potentially serious consequences.
- 13.) When lifting one side of an AL combine to remove a front wheel, first lock the final drive by securing the catch (1) in the pin (2).
- 14.) During road transport, lock the final drives using the catches (1) and disengage the automatic levelling systems. Lower the rear of the combine manually in order not to change the overall dimensions and settings of the machine, specified in the type-approval certificate.



SAFETY DECALS

Safety decals are positioned on the machine as illustrated below.

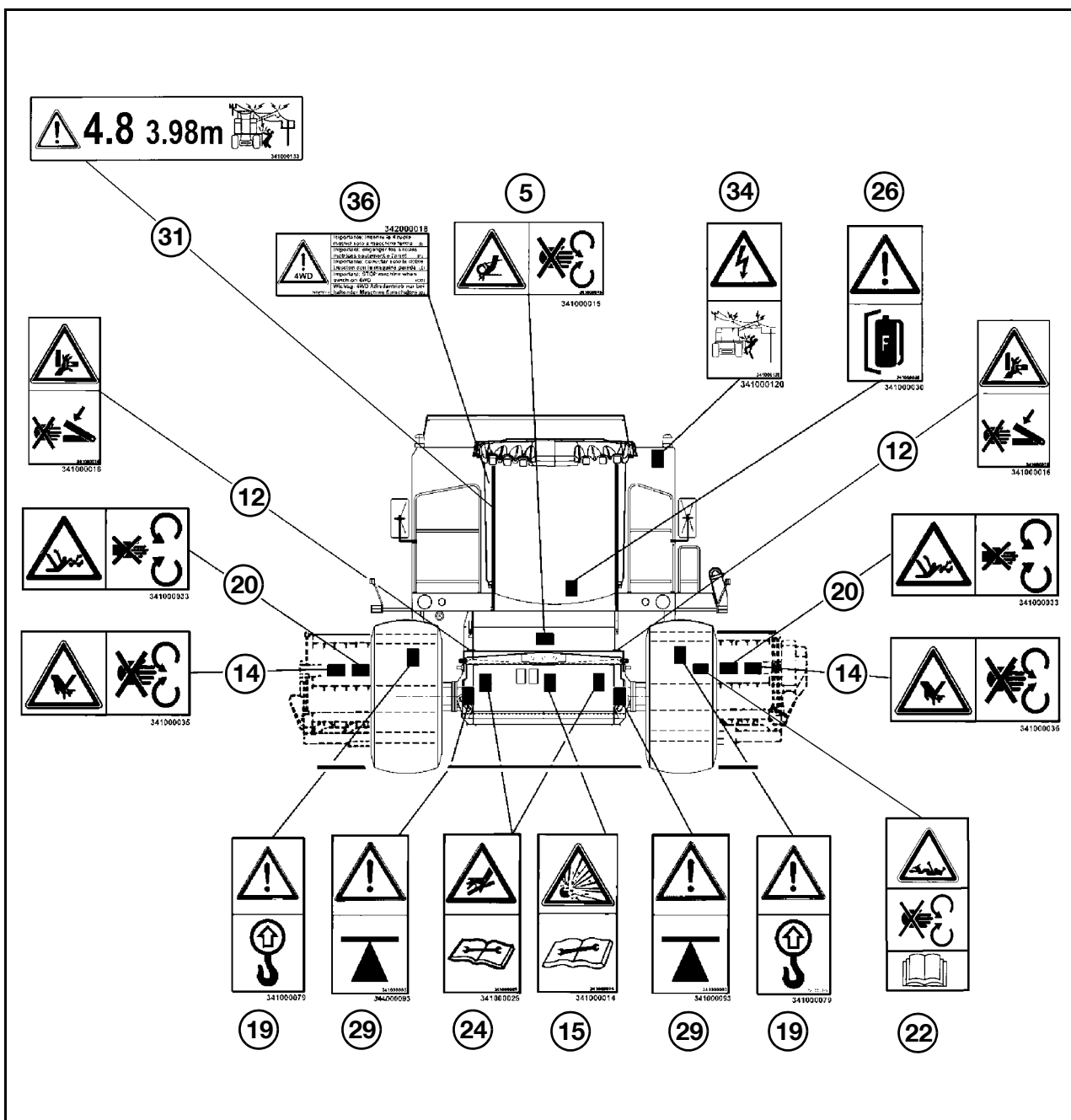
The decals provide immediate, easy and clear warning for operator and personnel about the unavoidable hazard areas, under the guards or in special sections of the machine, involving personal safety.

Using this manual as a guide, look over the machine and note the position and the meaning of each safety decal.

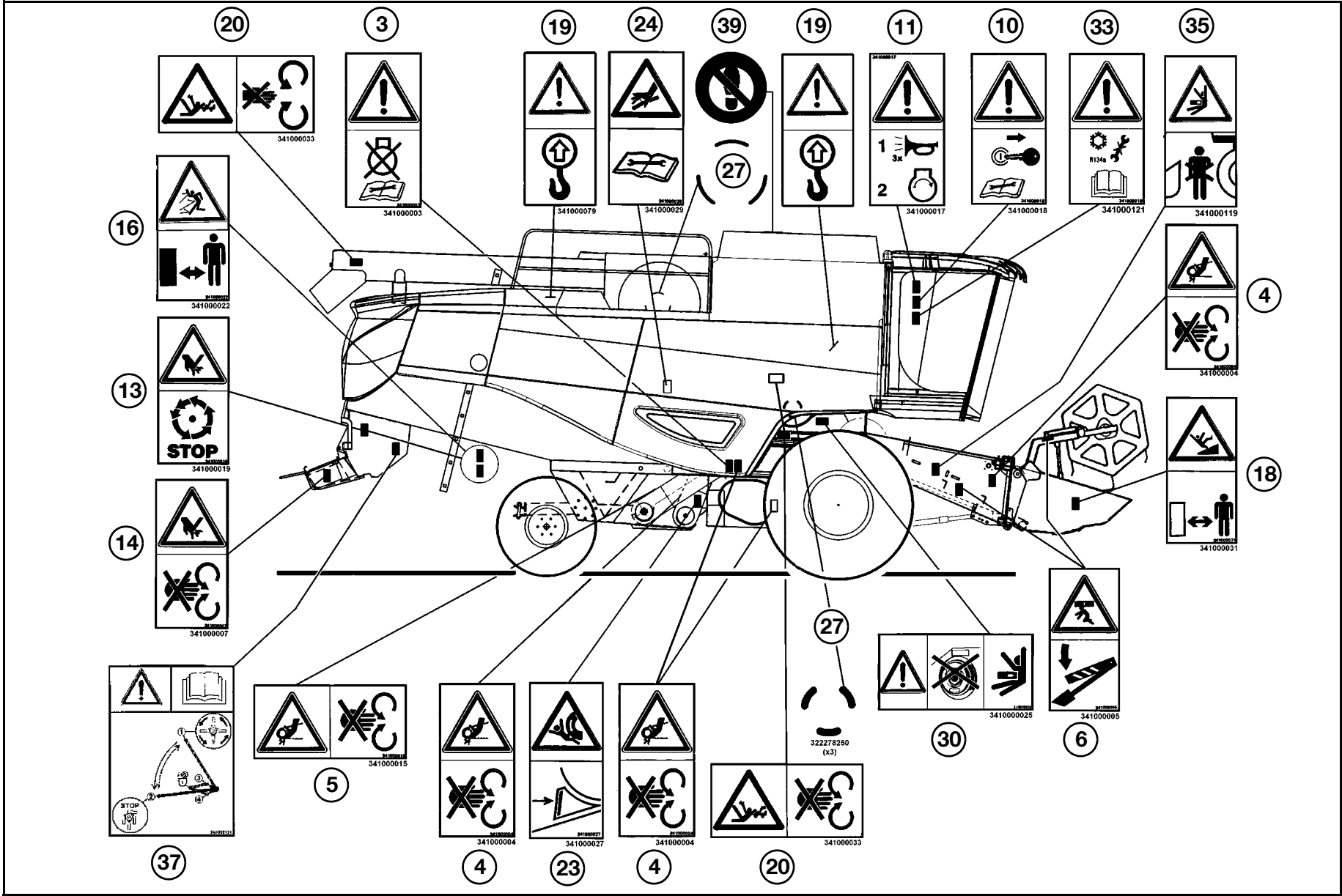
Review the safety decals with the machine operators, along with the operating instructions of this manual.



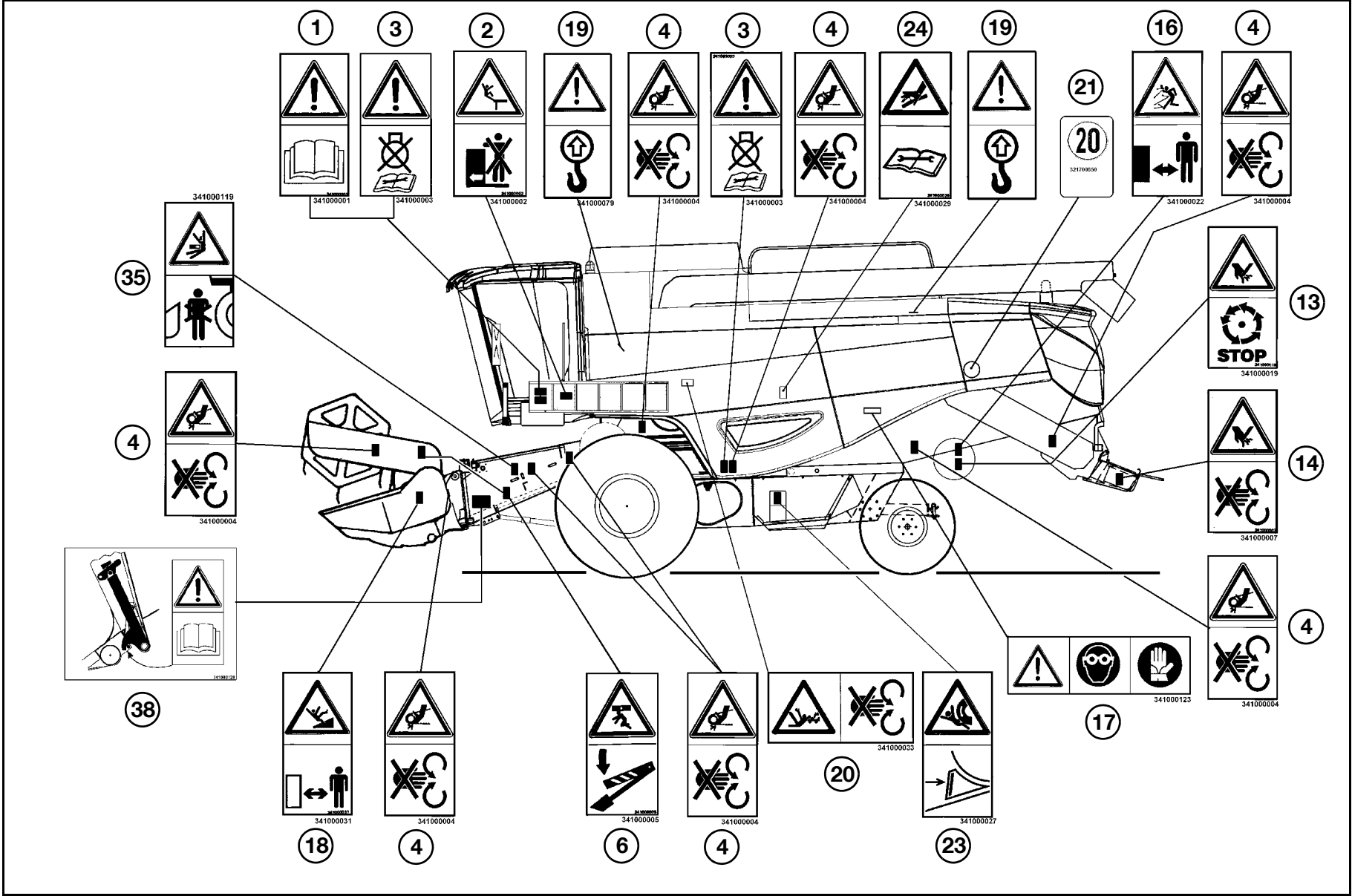
WARNING: Make sure the decals are always legible; otherwise, ask for replacements from your local Dealer.



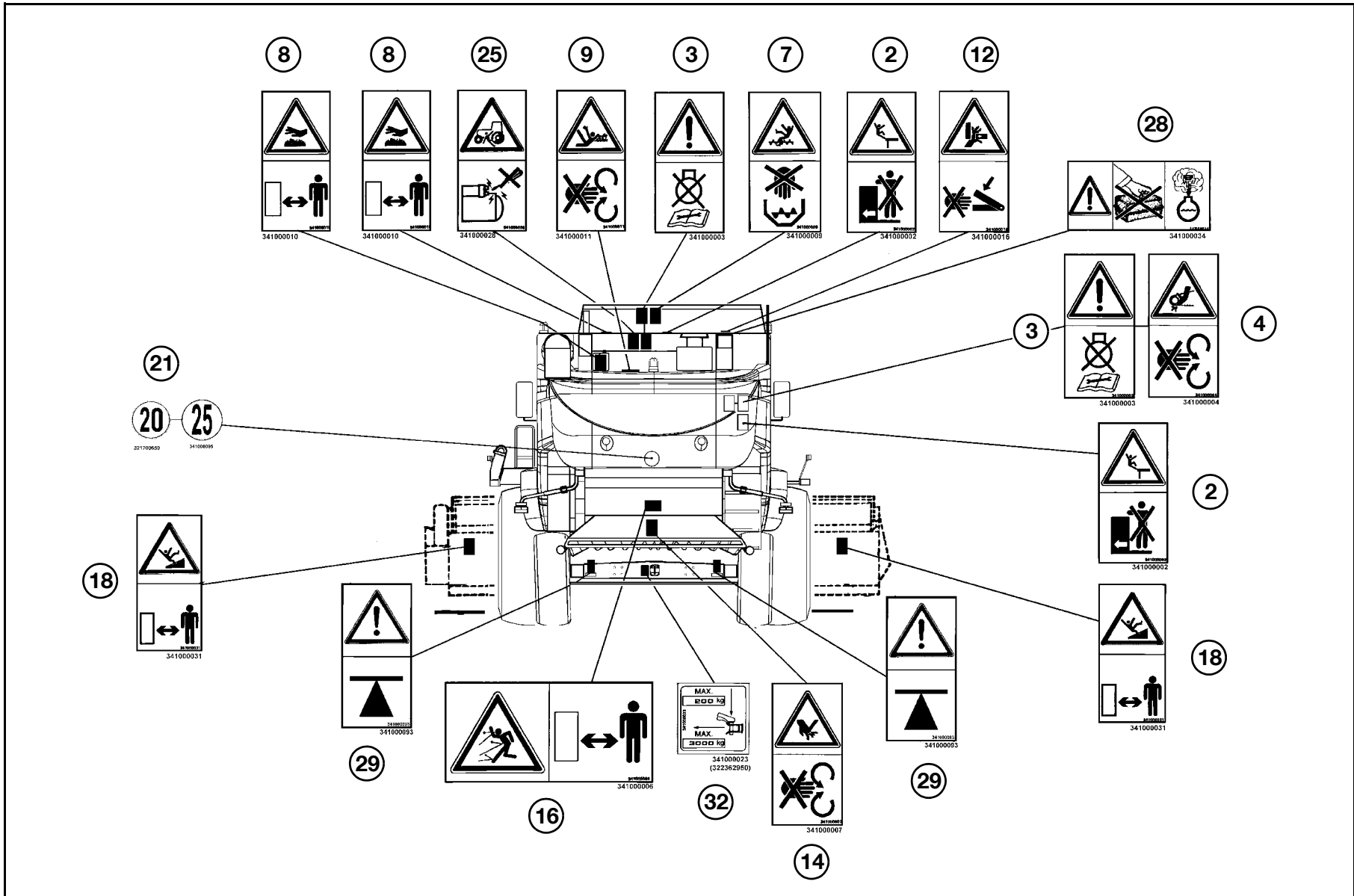
Decal position - front



Decal position - right-hand side

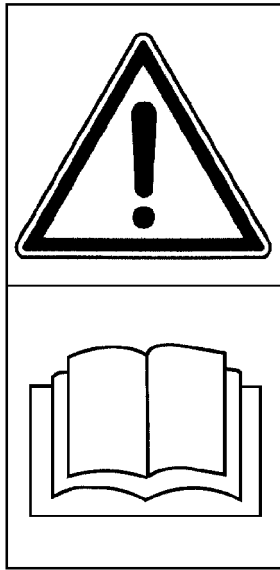


Decal position - left-hand side



Decal position - rear

DESCRIPTION OF DECALS



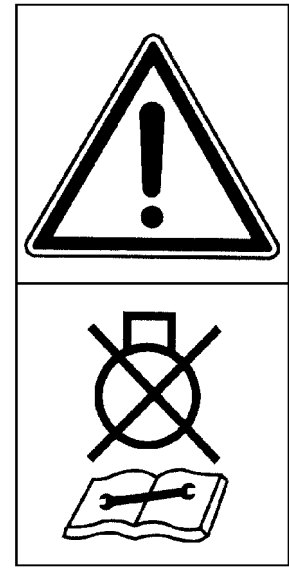
(341000001)
Decal 1

Read this Operator's Manual carefully before operating the machine. Pay special attention to instructions on operational safety.



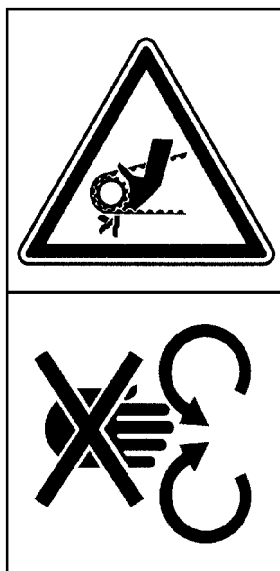
(341000002)
Decal 2

Do not ride on the platform or the ladder when the machine is moving.

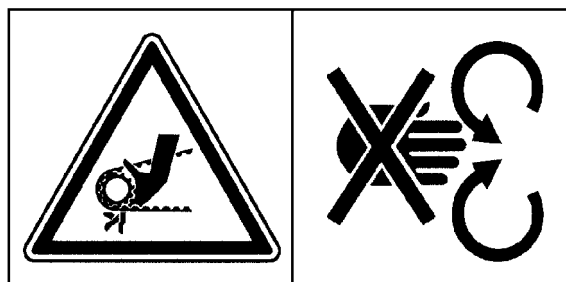


(341000003)
Decal 3

Disengage all drives, switch off the engine and wait until all rotating parts have come to a complete stop before cleaning or servicing the machine.



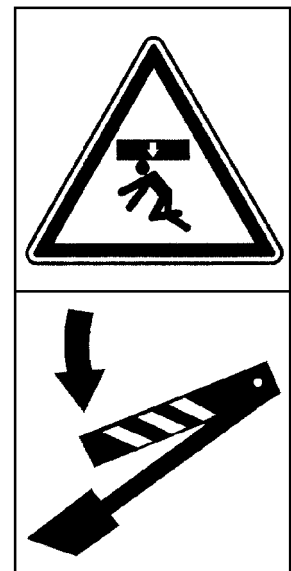
(341000004)



(341000015)

Decals 4 and 5

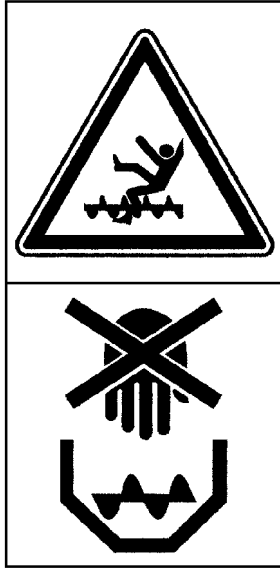
Do not open or remove the safety guards when the engine is running.



(341000005)

Decal 6

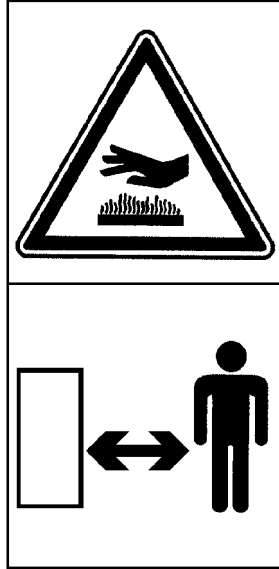
Engage the safety stops on the lifting rams before carrying out any maintenance work under the cutting table, and during road transport with the table attached.



(341000009)

Decal 7

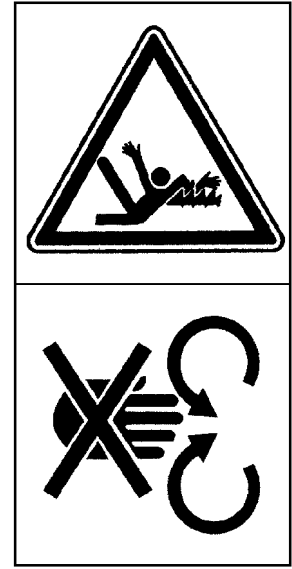
Do not enter the grain tank when the engine is running.



(341000010)

Decal 8

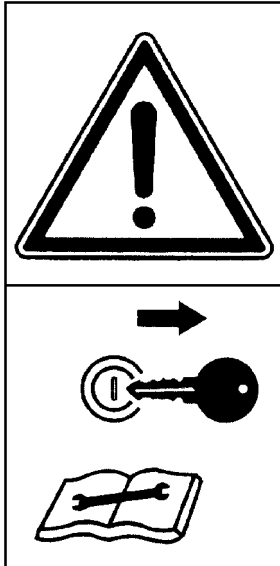
Stay clear of hot surfaces.



(341000011)

Decal 9

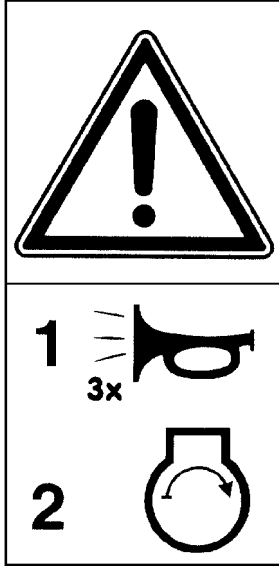
Do not enter the straw walkers when the engine is running.



(341000018)

Decal 10

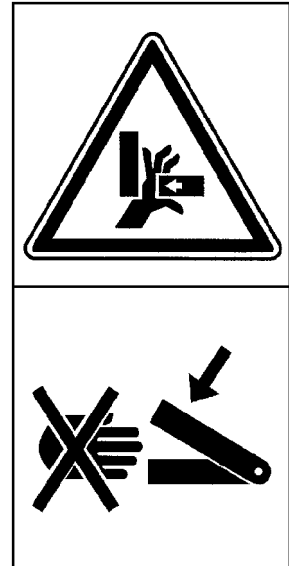
Switch off the engine and remove the ignition key before carrying out any maintenance or repair work and before leaving the machine unattended.



(341000017)

Decal 11

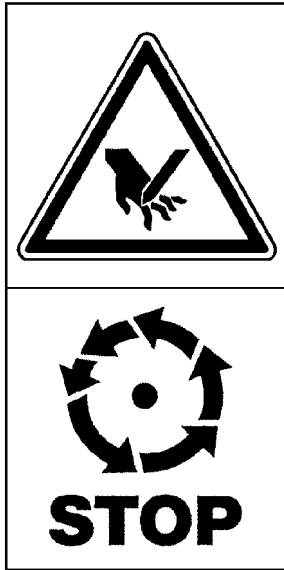
Always sound the horn three times to warn persons nearby of your intention to start the engine.



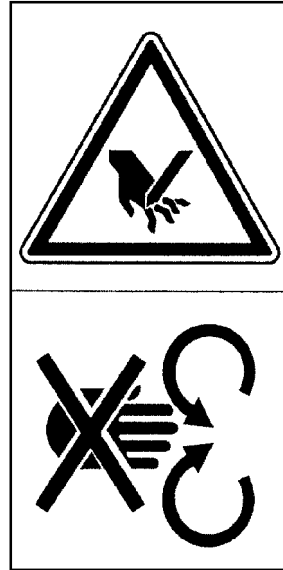
(341000016)

Decal 12

Do not reach into this area with hands or other parts of the body: Reciprocally moving parts may cause severe crushing injuries or wounds. Before approaching, switch off the engine and wait until all moving parts have come to a complete stop.



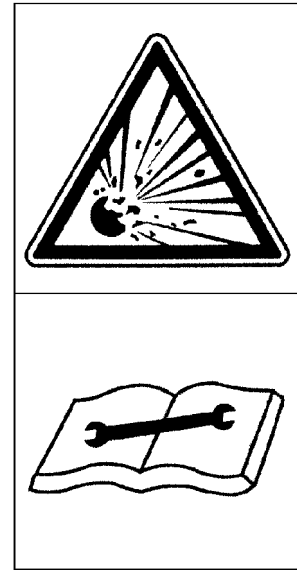
(341000019)



(341000007)

Decals 13 and 14

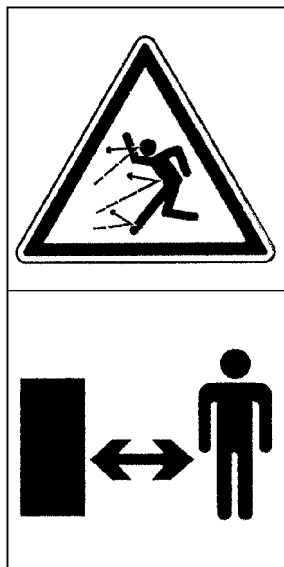
Stay clear of straw chopper, maize stalk chopper and chaff spreader: Knives (or cutting edges) rotating at high speed; any contact with these rotating parts may result in serious mutilation of fingers, hands, arms and other parts of the body. Before approaching this area, switch off the engine and wait until all rotating parts have come to a complete stop.



(341000014)

Decal 15

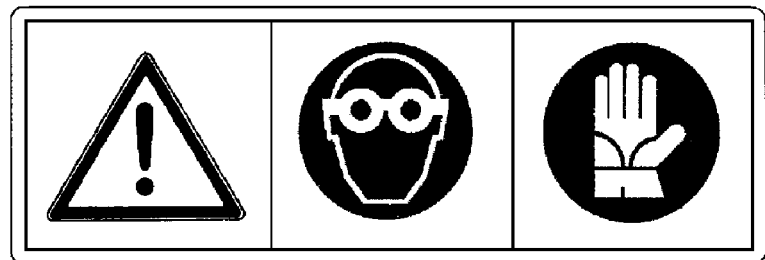
Hydraulic accumulators contain pressurised gas and oil. **To check or replace hydraulic accumulators, consult your local Dealer.**



341000022

Decal 16

Indicating areas from which material other than crop (grain) is violently ejected (short straw, maize stalks etc.) to be spread evenly on the ground; also indicating the hazard involved in standing close to straw chopper, maize-stalk chopper, chaff spreader, straw spreader etc.



341000123

Decal 17

Wear appropriate protective clothing when working on the battery.

This as a preview PDF file from best-manuals.com



Download full PDF manual at best-manuals.com