



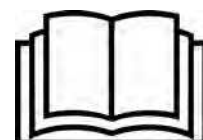
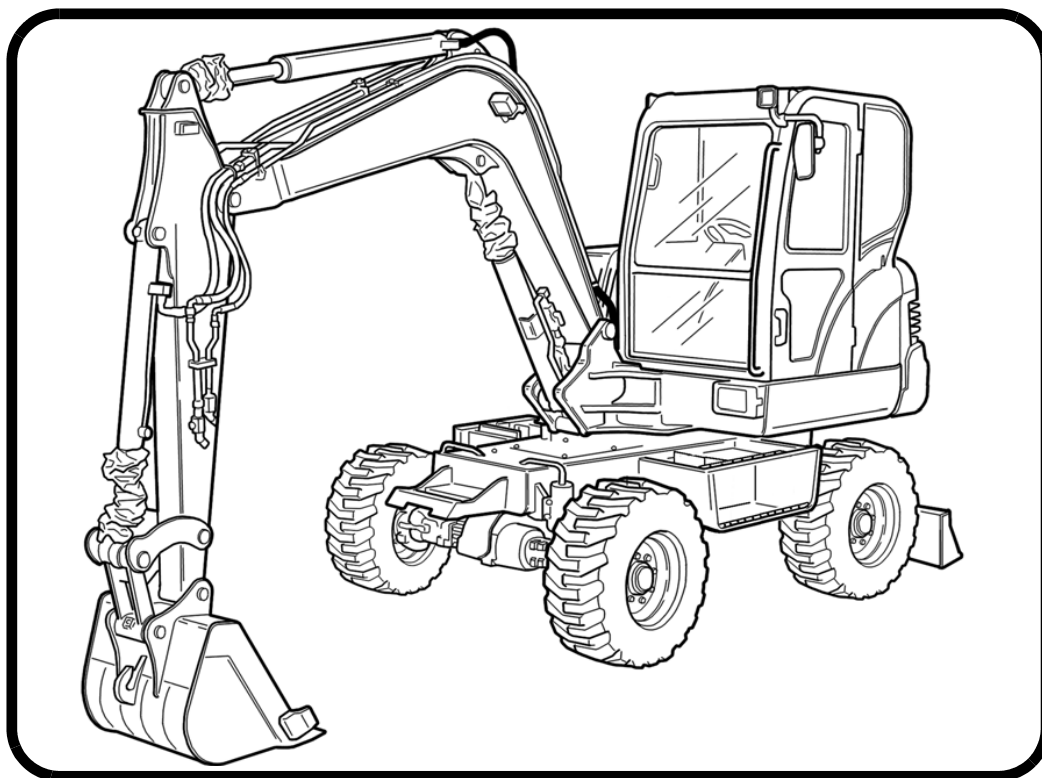
# Bobcat®

---

## Operation & Maintenance Manual E55W Compact Excavator

---

S/N AEFB11001 & Above





# OPERATOR SAFETY WARNINGS



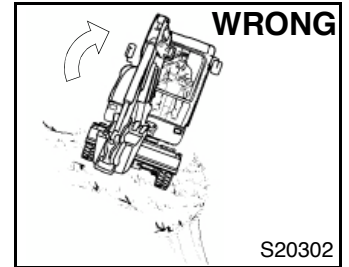
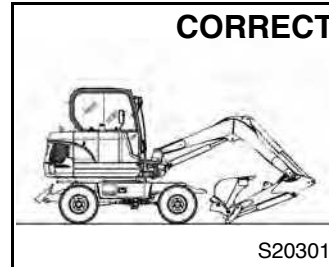
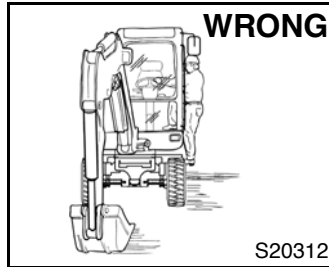
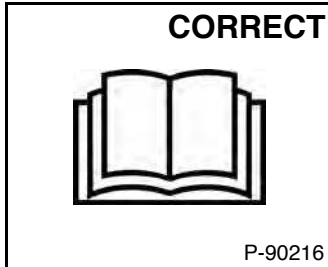
## WARNING

Operator must have instructions before operating the machine. Untrained operators can cause injury or death.

W-2001-0502



**Safety Alert Symbol:** This symbol with a warning statement means: "Warning, be alert! Your safety is involved!". Carefully read the message that follows.



⚠ Never operate without instructions.

⚠ Do not grasp steering wheel when entering cab.

⚠ Never operate without approved cab.

⚠ Avoid steep areas or banks that could break away.

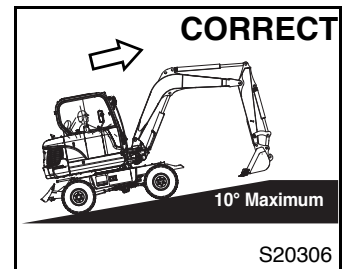
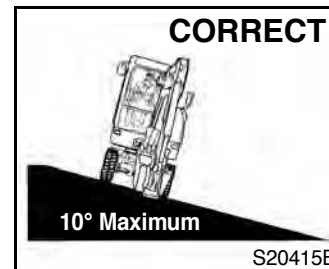
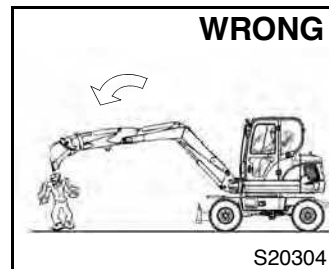
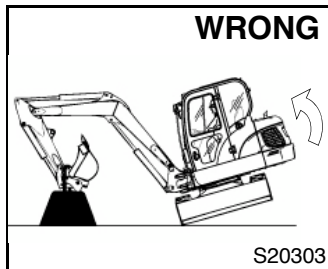
⚠ Read machine signs, Operation & Maintenance Manual, and Operator's Handbook.

⚠ Be sure controls are in neutral before starting.

⚠ Never modify equipment.

⚠ Sound horn and check behind machine before starting.

⚠ Never use attachments not approved by Bobcat Company.



⚠ Use caution to avoid tipping - do not swing heavy load over the side.

⚠ Keep bystanders out of maximum reach area.

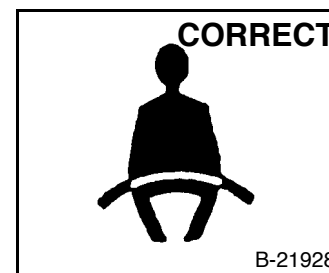
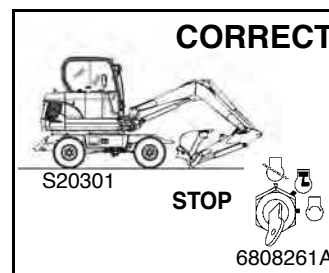
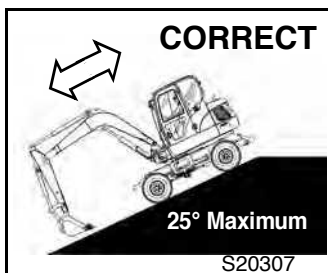
⚠ Avoid exceeding a 10° slope to the side.

⚠ Never travel up a slope that exceeds 10°.

⚠ Operate on flat, level ground.

⚠ Do not travel or turn with bucket extended.

⚠ Never carry riders.



### SAFETY EQUIPMENT

1. Seat Belt
2. Safety Signs (Decals)
3. ROPS/TOPS Cab
4. Slew Lock
5. Grab Handles
6. Operator's Handbook
7. Parking Brake

⚠ Avoid exceeding 25° when going down or backing up a slope.

⚠ To exit excavator, lower the attachment and blade to the ground.

⚠ Fasten seat belt securely.

⚠ Engage parking brake

⚠ Operate controls only from operator's seat.

⚠ Stop the engine.

OSW62-0409



**Bobcat®**

# CONTENTS

CONTENTS .....	4
FOREWORD .....	6
SAFETY & TRAINING RESOURCES .....	16
OPERATING INSTRUCTIONS .....	32
PREVENTIVE MAINTENANCE .....	100
SYSTEM SETUP AND ANALYSIS .....	150
SPECIFICATIONS .....	158
WARRANTY .....	170
ALPHABETICAL INDEX .....	174

## REFERENCE INFORMATION

Write the correct information for YOUR Bobcat excavator in the spaces below. Always use these numbers when referring to your Bobcat excavator.

Excavator Serial  
Number

Engine Serial Number

---

NOTES:

---

---

---

---

YOUR BOBCAT DEALER:

ADDRESS:

PHONE:

Bobcat Company Europe  
Drève Richelle 167  
B-1410 WATERLOO  
Belgium





**Bobcat®**

## FOREWORD

This Operation & Maintenance Manual was written to give the owner / operator instructions on the safe operation & maintenance of the Bobcat excavator. READ AND UNDERSTAND THIS OPERATION & MAINTENANCE MANUAL BEFORE OPERATING YOUR BOBCAT EXCAVATOR. If you have any questions, see your Bobcat dealer. This manual can illustrate options and accessories not installed on your excavator.

DECLARATION OF CONFORMITY .....	8
BOBCAT COMPANY IS ISO 9001 CERTIFIED .....	10
REGULAR MAINTENANCE ITEMS .....	10
LUBRICANTS AND FLUIDS .....	11
SERIAL NUMBER LOCATIONS .....	12
Excavator Serial Number .....	12
Engine Serial Number .....	12
DELIVERY REPORT .....	12
EXCAVATOR IDENTIFICATION .....	13
FEATURES, ACCESSORIES AND ATTACHMENTS .....	14
Standard Items .....	14
Options and Accessories .....	14
Attachments .....	14
Buckets Available .....	14
Falling Object Guards (FOGS) .....	15
Falling Object Guards Kit Inspection And Maintenance .....	15



**Bobcat®**




## DECLARATION OF CONFORMITY

### Contents of EC Declaration of Conformity

This information is provided in the operators manual to comply with clause 1.7.4.2(c) of Annex I of Machinery Directive 2006/42/EC.

The official EC Declaration of Conformity is supplied in a separate document.

<p>Manufacturer</p>  <p>Bobcat Company World Headquarters 250 East Beaton Drive West Fargo, ND 58078-6000 UNITED STATES OF AMERICA</p>	<p>Directive 2000/14/EC: Noise Emission in the Environment by Equipment Use out Outdoors</p> <p>Notified Body TÜV SÜD Industrie Service GmbH Germany Notified Body Number: 0036</p> <p>EC Certificate No. OR/013113/003</p>				
<p>Technical Documentation Doosan Benelux SA Drève Richelle 167 B-1410 Waterloo BELGIUM</p>	<p>Conformity Assessment Procedure(s) 2000/14/EC, Annex VI</p> <p>Sound Power Levels [Lw(A)]</p> <table border="0"> <tr> <td>Measured sound Power</td> <td>97 dBA</td> </tr> <tr> <td>Guaranteed sound Power</td> <td>98 dBA</td> </tr> </table>	Measured sound Power	97 dBA	Guaranteed sound Power	98 dBA
Measured sound Power	97 dBA				
Guaranteed sound Power	98 dBA				
<p>Description of Equipment Type of Equipment: Wheeled Excavator Model Name: E55W**EA Model Code: AEFB</p> <p>Engine Manufacturer: Yanmar Engine Model: 4TNV98-EPDBW Engine Power: 42.4 kW @ 2400 RPM</p>	<p>Equipment conforms to CE Directive(s) Listed Below 2006/42/EC: Machinery Directive 2004/108/EC: Electromagnetic Compatibility Directive</p>				
<p>Declaration of Conformance This equipment conforms to the requirements specified in all the EC Directives listed in this declaration.</p>					
<p>Effective From:</p> <p>29 December 2009</p>					



**Bobcat®**

**BOBCAT COMPANY IS ISO 9001 CERTIFIED**

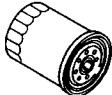
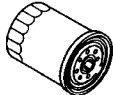
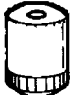

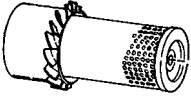
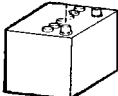





ISO 9001 is an international standard that specifies requirements for a quality management system that controls the processes and procedures which we use to design, develop, manufacture and distribute Bobcat products.

British Standards Institute (BSI) is the Certified Registrar Bobcat Company chose to assess the Company’s compliance with the ISO 9001 at Bobcat’s manufacturing facilities in Gwinner and Bismarck, North Dakota (U.S.A.), Pontchateau (France), Dobris (Czech Republic) and the Bobcat corporate offices (Gwinner, Bismarck & West Fargo) in North Dakota. Only certified assessors, like BSI, can grant registrations.

ISO 9001 means that as a company we say what we do and do what we say. In other words, we have established procedures and policies, and we provide evidence that the procedures and policies are followed.

**REGULAR MAINTENANCE ITEMS**

 <p>ENGINE OIL FILTER (6 pack)</p>	 <p>HYDRAULIC FILTER</p>
 <p>FUEL FILTER</p>	 <p>CASE DRAIN FILTER, In-Line</p>
 <p>AIR FILTER, Outer</p>	 <p>BATTERY</p>
 <p>AIR FILTER, Inner</p>	 <p>ETHYLENE GLYCOL ANTI-FREEZE, 6988096 Premixed [-34 F (-37C)] 6988097 Concentrate</p>
	 <p>COOLANT PRESSURE CAP</p>

**NOTE: Always verify Part Numbers with your Bobcat dealer.**

Lubrication and service chart is on the inside of tool box cover. The icons shown here are used in the lubrication and service chart on the next page.

## LUBRICANTS AND FLUIDS

The lubricants and fuels described below are standard for operating conditions in European temperate climate areas. Please consult your Bobcat dealer for requirements under other weather conditions

All Bobcat Equipment		Only for T.L.S., Wheeled EXC and AL		
		AXLE / TRANSMISSION	BRAKE FLUID	
ENGINE / LOADER TRANSMISSION	Bobcat Engine Power SAE 0W/30		Bobcat Engine Power SAE 0W/30	Bobcat Brake Fluid LHM
			Bobcat Engine Power SAE 10W/30	Bobcat Axle / Transmission Oil SAE 85W/90
			Bobcat Engine Power SAE 15W/40	Bobcat Axle / Transmission Oil ISO 100
			Bobcat Engine Power SAE 20W/50	Bobcat Axle / Transmission Oil ISO 100
	HYDRAULIC/ HYDROSTATIC	Bobcat Superior SH Hydraulic/Hydrostatic		Bobcat EG Coolant Premixed
		Bobcat Bio Hydraulic Hydraulic/Hydrostatic		Bobcat EG Coolant Concentrated
	ANTIFREEZE COOLANT	Bobcat PG Coolant Concentrated		Bobcat EG Coolant 4 Seasons
		Bobcat PG Coolant Concentrated		Bobcat EG Coolant Concentrated
		Bobcat PG Coolant Concentrated		Bobcat EG Coolant Concentrated
		Bobcat PG Coolant Concentrated		Bobcat EG Coolant Concentrated
	HYDRAULIC/ HYDROSTATIC	Bobcat Superior SH Hydraulic/Hydrostatic		Bobcat EG Coolant Concentrated
		Bobcat Bio Hydraulic Hydraulic/Hydrostatic		Bobcat EG Coolant Concentrated
		Bobcat Superior SH Hydraulic/Hydrostatic		Bobcat EG Coolant Concentrated
		Bobcat Bio Hydraulic Hydraulic/Hydrostatic		Bobcat EG Coolant Concentrated
	ENGINE / LOADER TRANSMISSION	Bobcat Engine Power SAE 0W/30		Bobcat EG Coolant Concentrated
		Bobcat Engine Power SAE 10W/30		Bobcat EG Coolant Concentrated
Bobcat Engine Power SAE 15W/40			Bobcat EG Coolant Concentrated	
Bobcat Engine Power SAE 20W/50			Bobcat EG Coolant Concentrated	
Packaging	Lineart		Bobcat EG Coolant Concentrated	
	5 L Can		Bobcat EG Coolant Concentrated	
	25 L Container		Bobcat EG Coolant Concentrated	
	209 L Drum		Bobcat EG Coolant Concentrated	
1000 L Tank		Bobcat EG Coolant Concentrated	Bobcat EG Coolant Concentrated	
Bobcat Multi-Purpose Grease			6903122	
Bobcat Supreme HD Grease			6687884	
Bobcat Extreme HP Grease			6687885	
4700300-EN (10-09)				

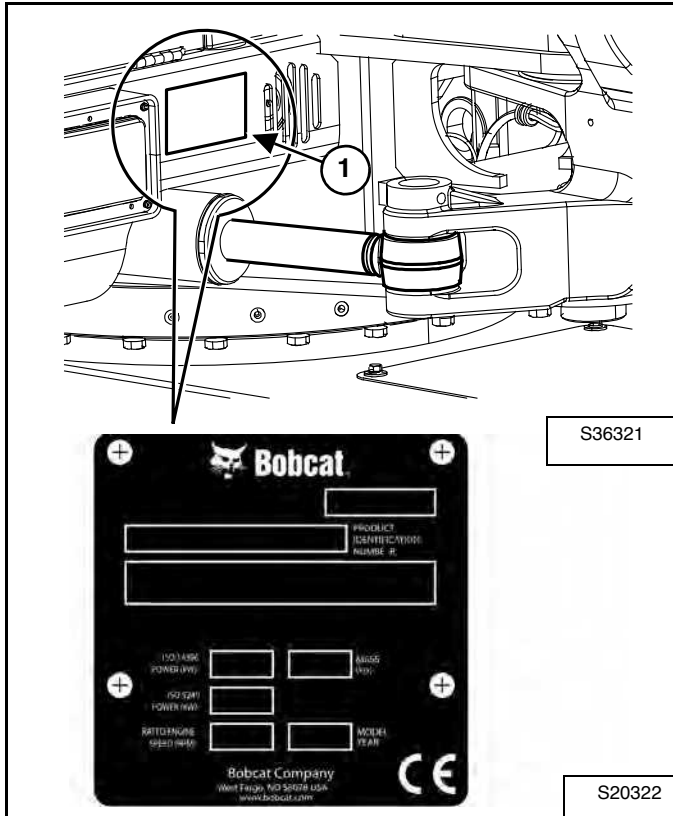
**NOTE: Always verify Part Numbers with your Bobcat dealer.**

## SERIAL NUMBER LOCATIONS

Always use the serial number of the excavator when requesting service information or when ordering parts. Early or later models (identification made by serial number) can use different parts, or it can be necessary to use a different procedure in doing a specific service operation.

### Excavator Serial Number

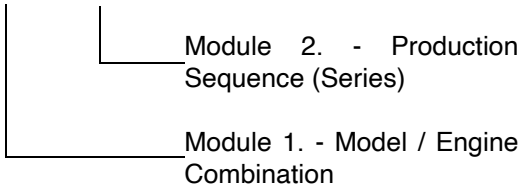
Figure 1



The excavator serial number plate (Item 1) [Figure 1] is located on the swing frame on the front of the upperstructure.

Explanation of Excavator Serial Number:

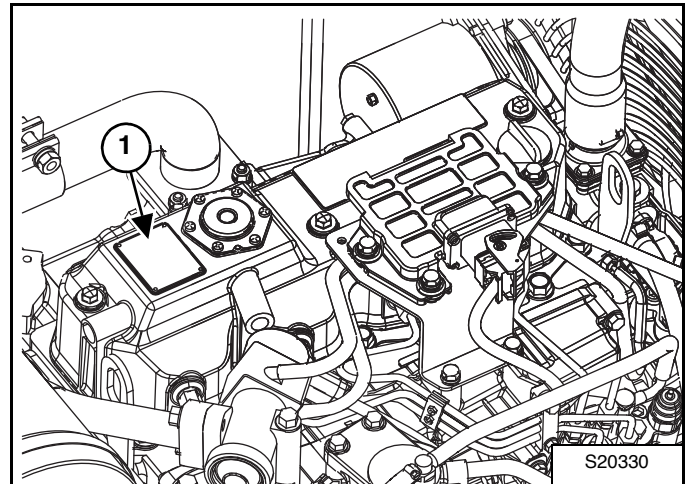
XXXX XXXXXX



1. The four digit Model/Engine Combination Module number identifies the model number and engine combination.
2. The five digit Production Sequence Number identifies the order which the excavator is produced.

### Engine Serial Number

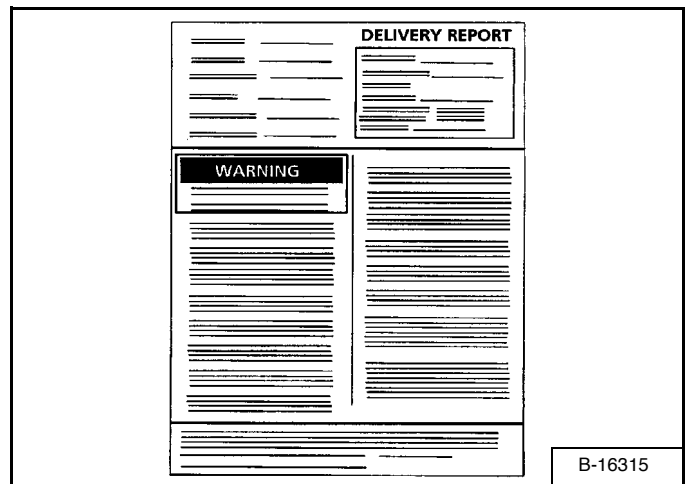
Figure 2



The engine serial number (Item 1) [Figure 2] is located on the top cover.

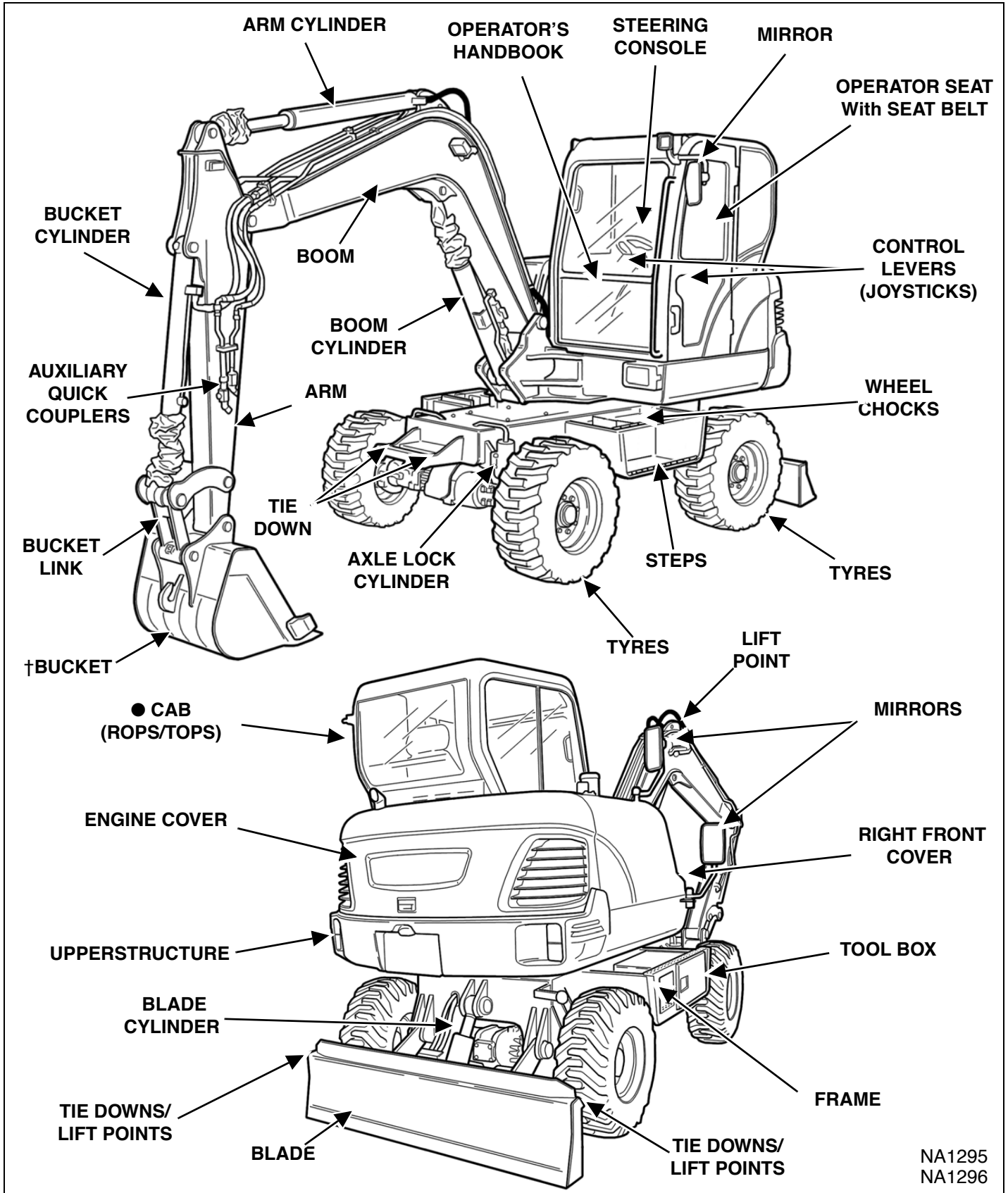
### DELIVERY REPORT

Figure 3



The delivery report must be completed by the dealer and signed by the owner or operator when the Bobcat Excavator is delivered. An explanation of the form must be given to the owner. Make sure it is complete [Figure 3].

**EXCAVATOR IDENTIFICATION**



- † BUCKET - Several different buckets and other attachments are available for the Bobcat Excavator.
- ROPS, TOPS - (Roll Over Protective Structure / Tip Over Protective Structure) as standard equipment. The ROPS/ TOPS meets ISO 3471 and ISO 12117.

## FEATURES, ACCESSORIES AND ATTACHMENTS

### Standard Items

Model E55W Bobcat Excavators are equipped with the following standard items:

- Cab with ROPS / TOPS Approval, Heater and A.C
- 1600 mm Arm
- 1920 mm Blade
- Two-Speed Travel
- Auxiliary Hydraulics
- Second Auxiliary Hydraulics
- Hydraulic and Travel Control Lockout
- Work Lights - Boom and Frame Mounted
- Hydraulic Joystick Controls
- Suspension Seat
- Overload Warning
- Sunvisor
- Advanced Diagnostics

### Options and Accessories

Below is a list of some equipment available from your Bobcat Excavator dealer as Dealer and/or Factory Installed Accessories and Factory Installed Options. See your Bobcat dealer for other available options, accessories and attachments.

- 3th Aux / Clamshell Piping - SA (Short Arm)
- 3th Aux / Clamshell Piping - LA (Long Arm)
- Arm - Long
- Arm - Short
- Arm Load Holding Valve (Safety Valve)
- Rotating Beacon
- Strobe Light
- Single Tyre
- Twin Tyre
- Special Applications (FOGS)
- Roof Guard
- Electric Fuel Pump

Specifications subject to change without notice

### Attachments

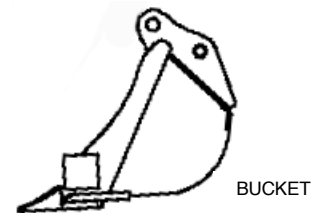
These and other attachments are approved for use on this model excavator. Do not use unapproved attachments. Attachments not manufactured by Bobcat can not be approved.

The versatile Bobcat Excavator quickly turns into a multi-job machine with a variety of attachments.

See your Bobcat dealer for more details on these and other attachments and field accessories.

- Ejector bucket
- Grading bucket
- Ripping tooth
- Rotating clamshell bucket
- Tilt bucket
- Trenching bucket
- Hydraulic Breaker

### Buckets Available



Many bucket styles, widths and different capacities are available for a variety of different applications. See your Bobcat dealer for the correct bucket for your Bobcat Excavator and application.

## FEATURES, ACCESSORIES AND ATTACHMENTS (CONT'D)

### Falling Object Guards (FOGS)

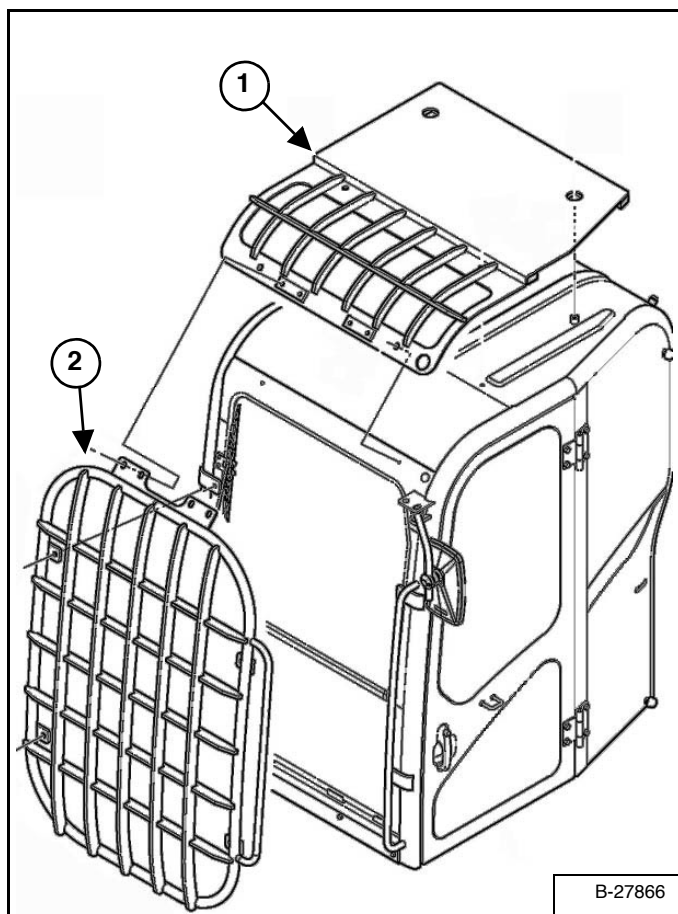
Available for special applications that require protection from smaller objects that can fall on the cab and restrict material from entering cab.

The excavator must have the overhead guard (Item 1) and the front guard (Item 2) installed to meet FOGS ISO 10262 - level 1.

See your Bobcat Dealer for availability.

### Falling Object Guards Kit Inspection And Maintenance

The Falling Object Guards Kit must be regularly inspected and maintained. Inspect the screen for damage. Replace parts as necessary.





## SAFETY & TRAINING RESOURCES

SAFETY INSTRUCTIONS .....	18
Before Operation .....	18
Safe Operation Is The Operator’s Responsibility .....	19
Safe Operation Needs A Qualified Operator .....	19
Avoid Silica Dust .....	20
FIRE PREVENTION .....	20
Maintenance .....	20
Operation .....	20
Electrical .....	20
Hydraulic System .....	21
Fueling .....	21
Starting .....	21
Welding And Grinding .....	21
Fire Extinguishers .....	21
SAFETY SIGNS .....	22
PUBLICATIONS AND TRAINING RESOURCES .....	23
MACHINE SIGNS (DECALS) .....	24
1. Back-up Alarm .....	26
2. Thrown or Flying Objects .....	26
3. Crush Hazard .....	26
4. Transporting And Lifting .....	27
5. General Hazard .....	27
6. Stay Away .....	28
7. Lift Capacity .....	28
8. High Pressure, Battery, Rotating Fan, Exhaust Gases and Service Schedule .....	29
9. Rotating Fan .....	29
10. Hot Surfaces .....	30



**Bobcat®**

## SAFETY INSTRUCTIONS

### Before Operation

Carefully follow the operating and maintenance instructions in this manual.

The Bobcat excavator is highly maneuverable and compact. It is rugged and useful under a wide variety of conditions. This presents an operator with hazards associated with off motorway, rough terrain applications, common with Bobcat excavator usage.

The Bobcat excavator has an internal combustion engine with resultant heat and exhaust. All exhaust gases can kill or cause illness so use the excavator with adequate ventilation.

The dealer explains the capabilities and restrictions of the Bobcat excavator and attachment for each application. The dealer demonstrates the safe operation according to Bobcat instructional materials, which are also available to operators. The dealer can also identify unsafe modifications or use of unapproved attachments. The attachments and buckets are designed for a Rated Lift Capacity. They are designed for secure fastening to the Bobcat excavator. The user must check with the dealer, or Bobcat literature, to determine safe loads of materials of specified densities for the machine - attachment combination.

The following publications and training materials provide information on the safe use and maintenance of the Bobcat machine and attachments:

- The Delivery Report is used to assure that complete instructions have been given to the new owner and that the machine and attachment is in safe operating condition.
- The Operation & Maintenance Manual delivered with the machine or attachment gives operating information as well as routine maintenance and service procedures. It is a part of the machine and can be stored in a container provided on the machine. Replacement Operation & Maintenance Manuals can be ordered from your Bobcat dealer.
- Machine signs (decals) instruct on the safe operation and care of your Bobcat machine or attachment. The signs and their locations are shown in the Operation & Maintenance Manual. Replacement signs are available from your Bobcat dealer.
- An Operator's Handbook is fastened to the operator cab of the excavator. Its brief instructions are convenient to the operator. See your Bobcat dealer for more information on translated versions.

The dealer and owner / operator review the recommended uses of the product when delivered. If the owner / operator will be using the machine for a different application(s) he or she must ask the dealer for recommendations on the new use.

## SAFETY INSTRUCTIONS (CONT'D)

### Safe Operation Is The Operator's Responsibility



#### Safety Alert Symbol

This symbol with a warning statement means:  
"Warning, be alert! Your safety is involved!"  
Carefully read the message that follows.



## WARNING

Operator must have instructions before operating the machine. Untrained operators can cause injury or death.

W-2001-0502

## IMPORTANT

This notice identifies procedures which must be followed to avoid damage to the machine.

I-2019-0284



## DANGER

The signal word DANGER on the machine and in the manuals indicates a hazardous situation which, if not avoided, will result in death or serious injury.

D-1002-1107



## WARNING

The signal word WARNING on the machine and in the manuals indicates a potentially hazardous situation which, if not avoided, could result in death or serious injury.

W-2044-1107

The Bobcat excavator and attachment must be in good operating condition before use.

Check all of the items on the Bobcat Service Schedule Decal under the 8-10 hour column or as shown in the Operation & Maintenance Manual.

### Safe Operation Needs A Qualified Operator

For an operator to be qualified, he or she must not use drugs or alcoholic drinks which impair alertness or coordination while working. An operator who is taking prescription drugs must get medical advice to determine if he or she can safely operate a machine.

#### *A Qualified Operator Must Do The Following:*

*Understand the Written Instructions, Rules and Regulations*

- The written instructions from Bobcat Company include the Delivery Report, Operation & Maintenance Manual, Operator's Handbook and machine signs (decals).
- Check the rules and regulations at your location. The rules may include an employer's work safety requirements. For driving on public roads, the machine must be equipped as stipulated by the local regulations authorising operation on public roads in your specific country. Regulations may identify a hazard such as a utility line.

#### *Have Training with Actual Operation*

- Operator training must consist of a demonstration and verbal instruction. This training is given by your Bobcat dealer before the product is delivered.
- The new operator must start in an area without bystanders and use all the controls until he or she can operate the machine and attachment safely under all conditions of the work area. Always fasten seat belt before operating.

#### *Know the Work Conditions*

- Know the weight of the materials being handled. Avoid exceeding the Rated Lift Capacity of the machine. Material which is very dense will be heavier than the same volume of less dense material. Reduce the size of load if handling dense material.
- The operator must know any prohibited uses or work areas, for example, he or she needs to know about excessive slopes.
- Know the location of any underground lines.
- Wear tight fitting clothing. Always wear safety glasses when doing maintenance or service. Safety glasses, respiratory equipment, hearing protection or Special Applications Kits are required for some work. See your Bobcat dealer about Bobcat Safety Equipment for your model.

SI EXC DSN EMEA-1009

This as a preview PDF file from [best-manuals.com](https://best-manuals.com)



Download full PDF manual at [best-manuals.com](https://best-manuals.com)