



EN

Operation & Maintenance Manual

Compact Track Loader



T66 S/N: B4SB11001 & Above



7353049enUS (C)
November 2020

Printed in USA
Original Instructions



© 2020 Bobcat Company.
All Rights Reserved.
T4-B

OPERATOR SAFETY WARNINGS



- Never operate without instructions. Read machine signs (decals), Operation & Maintenance Manual, and Operator's Handbook.
- Operator must have instructions before operating the machine. Untrained operators can cause injury or death.

SAFETY EQUIPMENT

The Bobcat® machine must be equipped with safety items necessary for each job. Ask your Bobcat dealer for information on the availability and safe use of attachments and accessories.

- SEAT BELT: Check belt fasteners and check for damaged webbing or buckle.
- SEAR BAR: When up, it must lock loader controls.
- OPERATOR CAB (ROPS AND FOPS): It must be on the loader with all fasteners tight.
- OPERATOR'S HANDBOOK: Must be in the cab.
- SAFETY SIGNS (DECALS): Replace if damaged.
- SAFETY TREADS: Replace if damaged.
- GRAB HANDLES: Replace if damaged.
- LIFT ARM SUPPORT: Replace if damaged.
- PARKING BRAKE
- BOBCAT INTERLOCK CONTROL SYSTEM (BICS)

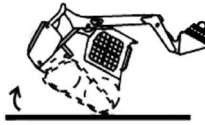
OPERATOR SAFETY WARNINGS



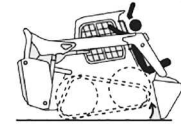
This Safety Alert Symbol means: "Attention! Be Alert! Your Safety is Involved!" Carefully read the message that follows.



- Always fasten seat belt snugly and use the seat bar.
- Always keep feet on foot pedals or footrests when operating.



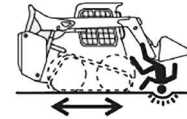
- Never exceed Rated Operating Capacity (ROC).
- Always carry bucket or attachment as low as possible.
- Do Not travel or turn with the lift arms up.
- Load, unload, and turn on flat level ground.



- Never leave loader with engine running or with lift arms up.
- To park: engage parking brake, put attachment flat on the ground, and stop the engine.



- Never use machine without operator cab with ROPS and FOPS approval.
- Fasten your seat belt!



- Never carry riders.
- Keep bystanders away from work area.



- Never modify equipment.
- Use only attachments approved by Bobcat Company for this machine model.



- Do Not use machine in atmosphere with explosive dust, explosive gas, or where exhaust can contact flammable material.



- Never use loader as a personnel lift or work platform.



FOREWORD	9
INTRODUCTION	9
Bobcat Company Is ISO 9001 Certified.....	9
MANUFACTURING LOCATIONS	9
North America.....	9
Czech Republic.....	9
REGULAR MAINTENANCE ITEMS	10
SERIAL NUMBER LOCATIONS	11
Machine Serial Number Location.....	11
Engine Serial Number Location.....	11
DELIVERY REPORT	11
LOADER IDENTIFICATION	12
Front View.....	12
Rear View.....	12
FEATURES, ACCESSORIES, AND ATTACHMENTS	13
Standard Items.....	13
Options And Accessories.....	13
Buckets Available.....	14
Attachments.....	14
High-Flow Attachments.....	14
Clear Side Enclosed Cab Option.....	15
Inspecting And Maintaining Clear Side Enclosed Cab Option.....	15
Special Applications Kit.....	15
Inspecting And Maintaining Special Applications Kit.....	16
Forestry Door And Window Kit.....	16
Inspecting And Maintaining Forestry Door And Window Kit.....	16
SAFETY AND TRAINING RESOURCES	17
SAFETY INSTRUCTIONS	17
Before Operation.....	17
Call Before You Dig.....	17
Safe Operation Is The Operator’s Responsibility.....	17
Safe Operation Needs A Qualified Operator.....	18
A Qualified Operator Must Do The Following.....	18
Silica Dust Exposure.....	18
FIRE PREVENTION	19
Maintenance.....	19
Operation.....	19
Electrical.....	19
Hydraulic System.....	19
Fueling.....	19
Starting.....	19
Spark Arrester Exhaust System.....	19
Welding And Grinding.....	19
Fire Extinguishers.....	20
PUBLICATIONS AND TRAINING RESOURCES	20
PICTORIAL ONLY SAFETY SIGNS	21
MACHINE SIGNS (DECALS)	22
OPERATING INSTRUCTIONS	42
INTENDED USE	42

INSTRUMENT PANEL OVERVIEW	43
STANDARD DISPLAY	44
TOUCH DISPLAY	46
LEFT CONTROL PANEL	48
RIGHT CONTROL PANEL	49
JOG SHUTTLE	49
Jog Shuttle (Standard Display)	49
Jog Shuttle (Touch Display)	50
HEATING, VENTILATION, AND AIR CONDITIONING (HVAC) CONTROLS	50
TOUCH DISPLAY RADIO INPUT PORTS	51
KEYED IGNITION KIT	51
RADIO	52
Radio Identification	52
Adjusting Radio Settings	52
Operating Radio Timer	53
Operating The Radio Clock	53
REAR VIEW CAMERA SYSTEM	54
Rear View Camera System Description	54
Maintaining Rear View Camera System	54
Adjusting Rear View Camera System	55
CONTROL IDENTIFICATION	56
Standard Controls Identification	56
Selectable Joystick Controls (SJC) Identification	57
OPERATOR CAB	58
Operator Cab Description	58
Operating Loader Lights	58
Operating Front Wiper And Washer	59
Operating Front Door	59
Filling Front Washer Tank	59
Operating Side Windows	60
BOBCAT INTERLOCK CONTROL SYSTEM (BICS)	60
Bobcat Interlock Control System (BICS) Description	60
Operating Bobcat Interlock Control System (BICS)	61
SEAT BAR RESTRAINT SYSTEM	61
Seat Bar Restraint System Description	61
Operating Seat Bar Restraint System	61
PARKING BRAKE	62
Operating Parking Brake	62
Operating Hydraulic Controls With Parking Brake Engaged	62
ENGINE SPEED CONTROL	63
Operating Engine Speed Control (Hand)	63
Operating Engine Speed Control (Foot)	63
AUTO IDLE	64
Auto Idle Description	64
Operating Auto Idle	64
LIFT ARM BYPASS CONTROL	65
Operating Lift Arm Bypass Control	65
EMERGENCY EXITS	66
Emergency Exit Locations	66
Making An Emergency Exit Through Rear Window With Latches	66
Making An Emergency Exit Through Rear Window With Rubber Cord	67
Removing Rear Window With Latches From Outside Loader	67
Removing Rear Window With Latches From Outside Loader With Knob Kit	67

Removing Rear Window With Rubber Cord From Outside Loader	67
Making An Emergency Exit Through Front Door	68
Front Door Reassembly	68
BACK-UP ALARM SYSTEM	70
Back-Up Alarm Description	70
Operating Back-Up Alarm	70
DRIVING AND STEERING THE LOADER	71
Available Control Configurations	71
Operating Standard Controls	71
Operating SJC In 'ISO' Control Pattern	72
Operating SJC In 'H' Control Pattern	73
STOPPING THE LOADER	74
Stopping Loader Using Control Levers Or Joysticks	74
TWO-SPEED CONTROL	74
Two-Speed Control Description	74
Operating Two-Speed	75
SPEED MANAGEMENT	75
Speed Management Description	75
Operating Speed Management	75
Changing Speed Management Default Setting	76
DRIVE RESPONSE	77
Drive Response Description	77
Adjusting Drive Response	77
STEERING DRIFT COMPENSATION	78
Steering Drift Compensation Description	78
Adjusting Steering Drift Compensation	78
LIFT AND TILT COMPENSATION	80
Lift And Tilt Compensation Description	80
Adjusting Lift And Tilt Compensation	80
HYDRAULIC CONTROLS	82
Hydraulic Controls Description	82
Operating Standard Hydraulic Controls	82
Operating SJC Hydraulic Controls In 'ISO' Control Pattern	83
Operating SJC Hydraulic Controls In 'H' Control Pattern	83
Operating Dual Direction Bucket Positioning	84
Operating Automatic Ride Control	84
Operating Reversing Fan	85
Operating Front Auxiliary Hydraulics	86
Operating Front Auxiliary Hydraulics In Continuous Flow Mode	86
Operating Front Auxiliary Hydraulics In Reverse Continuous Flow Mode	87
Operating Rear Auxiliary Hydraulics	88
Operating High-Flow Auxiliary Hydraulics	88
Connecting And Disconnecting Standard Auxiliary Hydraulic Couplers	89
Troubleshooting Auxiliary Hydraulic Couplers	90
Relieving Auxiliary Hydraulic Pressure (Front Auxiliary Couplers)	90
Relieving Auxiliary Hydraulic Pressure (Rear Auxiliary Couplers)	90
ATTACHMENT CONTROL DEVICE (ACD)	91
Attachment Control Device (ACD) Description	91
DAILY INSPECTION	92
Daily Inspection And Maintenance List	92
PRE-STARTING PROCEDURE	94
Entering The Machine	94
Operation & Maintenance Manual And Operator's Handbook Locations	94

Adjusting Seat	95
Adjusting Suspension Seat	95
Adjusting Heated Cloth Air Ride Suspension Seat	95
Adjusting Retractable Seat Belt	96
Adjusting 3-Point Restraint Seat Belt	96
Lowering Seat Bar	96
Adjusting Joystick Position	97
STARTING THE ENGINE	97
Quick Start Description	97
Starting Engine	98
Warming The Hydraulic / Hydrostatic System	100
Cold Temperature Starting Tips	100
Cold Temperature Engine Speed Control Description	100
Cold Temperature Hydrostatic Drive Description	100
MONITORING THE DISPLAY	101
Monitoring Standard Display During Operation	101
Monitoring Touch Display During Operation	101
Derate And Shutdown Conditions	102
STOPPING THE ENGINE AND LEAVING THE MACHINE	103
Stopping The Engine And Leaving The Machine Procedure	103
COUNTERWEIGHTS	104
Counterweight Description	104
Effect Of Counterweight Use On The Loader And Loader Operation	104
When To Consider Using Frame Mounted Counterweights	104
When To Consider Removing Frame Mounted Counterweights	104
Accessories That Affect Machine Weight	104
ATTACHMENTS	105
Choosing The Correct Bucket	105
Pallet Fork Information	106
Inspecting Pallet Fork	106
INSTALLING AND REMOVING ATTACHMENTS (HAND LEVER BOB-TACH SYSTEM)	107
Installing Attachments	107
Removing Attachments	109
INSTALLING AND REMOVING ATTACHMENTS (POWER BOB-TACH SYSTEM)	110
Installing Attachments	110
Removing Attachments	112
TRACK UNDERCARRIAGE SYSTEM	114
Track Loader Introduction	114
Compact Track Loader Operating And Maintenance Tips	114
OPERATING PROCEDURE	116
Inspect The Work Area	116
Basic Operating Instructions	116
Driving On Public Roads	116
Operating On Slopes With A Full Bucket	116
Operating On Slopes With An Empty Bucket	117
TOWING THE MACHINE	117
Towing Procedure	117
LIFTING THE MACHINE	118
Single-Point Lift Description	118
Four-Point Lift Description	118
TRANSPORTING THE MACHINE	119
Loading And Unloading Machine	119
Fastening Machine To Transport Vehicle	120

PREVENTIVE MAINTENANCE	122
MAINTENANCE SAFETY WARNINGS	122
MAINTENANCE SAFETY WARNINGS	123
SERVICE SCHEDULE	124
Maintenance Intervals	124
As Indicated (Per Display)	125
Every 10 Hours (Before Starting The Loader)	125
First 100 Hours	125
Every 100 Hours	126
Every 500 Hours Or Every 12 Months	126
Every 750 Hours or Every 12 Months	126
Every 1000 Hours or Every 12 Months	126
Every 1500 Hours or Every 24 Months	126
BOBCAT INTERLOCK CONTROL SYSTEM (BICS)	126
Inspecting The Bobcat Interlock Control System (BICS)	126
Inspecting The Lift Arm Bypass Control	128
SEAT BAR RESTRAINT SYSTEM	129
Seat Bar Restraint System Control Description	129
Inspecting Seat Bar Restraint System	129
Maintaining Seat Bar Restraint System	130
SEAT BELT	131
Inspecting And Maintaining The Seat Belt	131
LIFT ARM SUPPORT	132
Lift Arm Support Description	132
Installing Lift Arm Support	132
Removing Lift Arm Support	133
BACK-UP ALARM SYSTEM	135
Inspecting Back-Up Alarm System	135
Adjusting Back-Up Alarm Switches	136
OPERATOR CAB	137
Inspecting Operator Cab	137
Cab Door Sensor Description	137
Raising Operator Cab	137
Lowering Operator Cab	139
REAR DOOR (TAILGATE)	141
Opening And Closing Rear Door	141
Using Rear Door Stop	141
Adjusting Rear Door Latch	141
REAR GRILLE	142
Raising Rear Grille	142
Lowering Rear Grille	142
HEATING, VENTILATION, AND AIR CONDITIONING (HVAC)	143
Cleaning HVAC Filters	143
Cleaning Air Conditioning Evaporator And Heater Coil	143
Cleaning Air Conditioning Condenser	145
Lubricating Air Conditioning System	145
Troubleshooting HVAC System	145
ENGINE AIR CLEANER	145
Replacing Engine Air Filter Element (Outer)	145
Replacing Engine Air Filter Element (Inner)	146
FUEL SYSTEM	147
Fuel Specifications	147
Biodiesel Blend Fuel	147

Filling The Fuel Tank	148
Removing Water From Main Fuel Filter	149
Replacing Fuel Pre-Filter	149
Replacing Main Fuel Filter	150
Replacing Fuel Tank Vent Filter	151
ENGINE LUBRICATION SYSTEM	152
Checking And Adding Engine Oil	152
Engine Oil Chart	153
Replacing Engine Oil And Filter	153
ENGINE COOLING SYSTEM	155
Cleaning Engine Cooling System	155
Checking And Adding Coolant	156
Replacing Coolant	157
ELECTRICAL SYSTEM	159
Electrical System Description	159
Fuse And Relay Identification	159
Battery Maintenance	164
Maintaining Battery Charge Level	164
Battery Service During Machine Storage	164
Testing The Battery	165
Battery Charging	165
Using A Booster Battery (Jump Starting)	165
Replacing Battery	166
HYDRAULIC SYSTEM	168
Checking And Adding Hydraulic Fluid	168
Hydraulic Fluid Chart	169
Replacing Hydraulic Fluid	169
Replacing Main Hydraulic Filter	172
Replacing Hydraulic Case Drain Filter	174
Replacing Hydraulic Charge Filter	175
Replacing Hydraulic Reservoir Vent Filter	176
TRACK TENSION	177
Checking Track Tension	177
Increasing Track Tension	177
Decreasing Track Tension	178
HYDROSTATIC DRIVE MOTOR	180
Replacing Brake Cavity Fluid	180
TRACK SPROCKET MAINTENANCE	180
Checking Track Sprocket Torque	180
BELTS	181
Adjusting Belt (Machines Without Air Conditioning)	181
Replacing Belt (Machines Without Air Conditioning)	181
Adjusting Belt (Machines With Air Conditioning)	182
Replacing Belt (Machines With Air Conditioning)	182
AUTOMATIC RIDE CONTROL ACCUMULATOR	183
Checking Automatic Ride Control Accumulator Charge	183
PIVOT PINS	183
Checking Pivot Pin Torque	183
MACHINE LUBRICATION	184
Lubricating Grease Fittings	184
BOB-TACH (HAND LEVER)	185
Inspecting And Maintaining Hand-Lever Bob-Tach	185
BOB-TACH (POWER)	186

Inspecting And Maintaining Power Bob-Tach	186
MACHINE STORAGE AND RETURN TO SERVICE	188
Machine Extended Storage Procedure.....	188
Machine Return To Service Procedure	188
SYSTEM SETUP AND ANALYSIS.....	189
NAVIGATION (STANDARD DISPLAY)	189
Navigation Bar.....	189
Viewing Active Shortcuts	189
VITALS (STANDARD DISPLAY).....	190
Vital Detail And Machine Performance.....	190
SERVICE (STANDARD DISPLAY)	191
Record A Service	191
View Service Codes	191
SETTINGS (STANDARD DISPLAY)	192
Display Settings.....	192
Machine Settings	193
Security Settings.....	194
Security Settings (Manage Operators)	194
Language Settings	195
Units	196
Software	196
GAUGES (TOUCH DISPLAY).....	197
Vital Detail And Machine Performance.....	197
Notification Drawer	198
CAMERA (TOUCH DISPLAY).....	199
Camera Settings.....	199
PHONE (TOUCH DISPLAY)	200
AUDIO (TOUCH DISPLAY).....	200
SERVICE (TOUCH DISPLAY)	201
Record A Service	201
View Service Schedule.....	202
View Service Record	203
View Service Codes	204
ATTACHMENTS (TOUCH DISPLAY)	205
Attachment Information	205
SETTINGS (TOUCH DISPLAY)	206
Favorites.....	206
Display Settings.....	208
Machine Settings	209
Security Settings.....	210
Security Settings (Manage Operators)	211
Operator Statistics.....	213
Job Clocks.....	214
Adding And Removing Job Clocks	215
Language Settings	216
Units	216
Camera Settings.....	217
Bluetooth Settings.....	217
Audio Settings.....	217
Dealer	217
Software	218
DIAGNOSTIC SERVICE CODES.....	219

Service Codes List	219
SPECIFICATIONS	233
MACHINE DIMENSIONS	233
LOADER SPECIFICATIONS	235
Performance Specifications	235
Engine Specifications	235
Drive System Specifications	236
Control Specifications	236
Hydraulic System Specifications	237
Hydraulic Cylinder Specifications	237
Electrical System Specifications	237
Fluid Capacities	238
Tracks	238
Ground Pressure	238
WARRANTY	239
BOBCAT LOADER WARRANTY	239
EMISSION — RELATED WARRANTY	240
Bobcat Company	240
FEDERAL & CALIFORNIA EMISSION CONTROL SYSTEMS LIMITED WARRANTY for NON-ROAD ENGINES (CI)	240
OWNER'S WARRANTY RIGHTS AND OBLIGATIONS	240
MANUFACTURER'S WARRANTY COVERAGE	240
OWNER'S WARRANTY RESPONSIBILITIES	240

INTRODUCTION

This Operation & Maintenance Manual was written to give the owner / operator instructions on the safe operation and maintenance of the Bobcat machine. Read and understand this Operation & Maintenance Manual before operating your Bobcat machine. If you have any questions, see your Bobcat dealer. This manual may illustrate options and accessories not installed on your machine.

Bobcat Company Is ISO 9001 Certified



ISO 9001 is an international standard that specifies requirements for a quality management system that controls the processes and procedures that we use to design, develop, manufacture, and distribute Bobcat products.

British Standards Institute (BSI) is the Certified Registrar that Bobcat Company chose to assess the company's compliance with ISO 9001 at Bobcat's manufacturing facilities in Gwinner, North Dakota (U.S.A.), Pontchâteau (France), and the Bobcat corporate offices (Gwinner, Bismarck, and West Fargo) in North Dakota. TÜV Rheinland is the Certified Registrar that Bobcat Company chose to assess the company's compliance with ISO 9001 at Bobcat's manufacturing facility in Dobříš (Czech Republic). Only certified assessors, like BSI and TÜV Rheinland, can grant registrations.

ISO 9001 means that as a company we say what we do and do what we say. In other words, we have established procedures and policies, and we provide evidence that the procedures and policies are followed.

MANUFACTURING LOCATIONS

North America

Bobcat Company
 P.O. Box 128
 Gwinner, ND 58040-0128
 United States of America

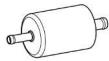
Czech Republic

Doosan Bobcat EMEA s.r.o.
 U Kodetky 1810
 263 12 Dobříš
 Czech Republic

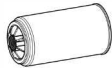
REGULAR MAINTENANCE ITEMS



ENGINE OIL FILTER
7343102



FUEL FILTER, PRE-FILTER
7348032



FUEL FILTER, MAIN
7336334



FUEL TANK VENT FILTER
7340277



ENGINE AIR FILTER, OUTER
7386225



ENGINE AIR FILTER, INNER
7386224



HYDRAULIC MAIN FILTER, Kit with O-rings
7414582



HYDRAULIC CASE DRAIN FILTER
7334208



HYDRAULIC CHARGE FILTER
7319444



HYDRAULIC RESERVOIR VENT FILTER
7390732



BATTERY
7269857



HYDROSTATIC DRIVE MOTOR FLUID
7270874 (12 U.S. fl oz)



HYDRAULIC FLUID
6903117 (2.5 U.S. gal)
6903118 (5 U.S. gal)
6903119 (55 U.S. gal)



PROPYLENE GLYCOL COOLANT
6983128 - Premixed (U.S. gal)
6983129 - Concentrate (U.S. gal)

ENGINE OIL	1 qt
SAE 15W40	7354881
SAE 10W30	7354875
Synthetic SAE 5W-40	7403513

ENGINE OIL	1 U.S. gal
SAE 15W40	7354882
SAE 10W30	7354876
Synthetic SAE 5W-40	7403514

ENGINE OIL	2.5 U.S. gal
SAE 15W40	7354883
SAE 10W30	7354877

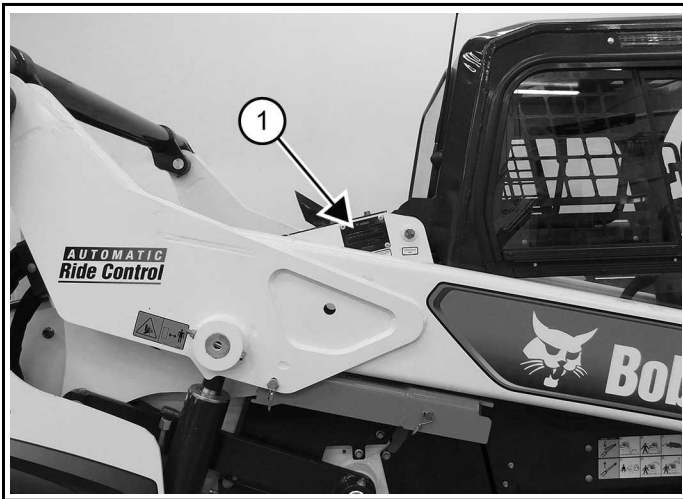
NOTE: Always verify Part Numbers with your Bobcat dealer.

SERIAL NUMBER LOCATIONS

Always use the serial number of the machine when requesting service information or when ordering parts. Earlier or later models (identification made by serial number) may use different parts, or it may be necessary to use a different procedure to do a specific service operation.

Machine Serial Number Location

Figure 1

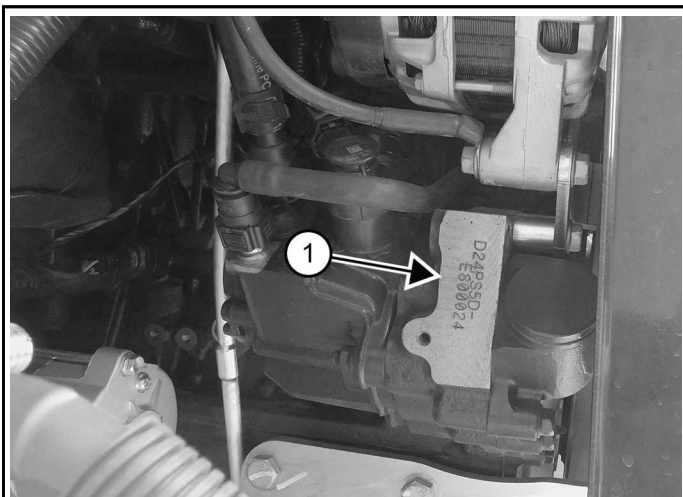


C200190A

The machine serial number plate (Item 1) [Figure 1] is located on the right rear of the machine frame.

Engine Serial Number Location

Figure 2



C200191A

The engine serial number (Item 1) [Figure 2] is located on the left side of the engine below the alternator.

DELIVERY REPORT

Figure 3

NA15473

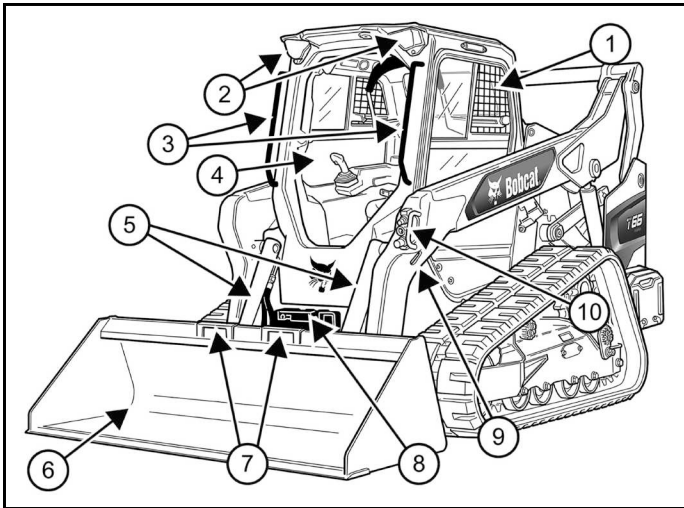
The delivery report contains a list of items that must be explained or shown to the owner or operator by the dealer when the machine is delivered.

The delivery report must be reviewed and signed by the owner or operator and the dealer.

LOADER IDENTIFICATION

Front View

Figure 4



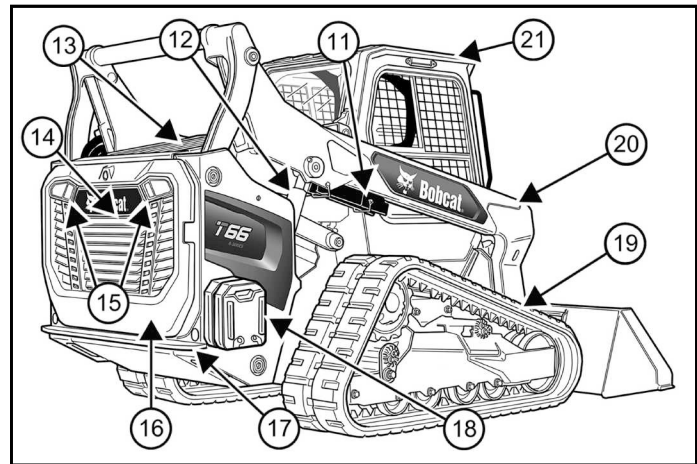
NA18804A

REF	DESCRIPTION
1	Operation & Maintenance Manual and Operator's Handbook
2	Front Lights
3	Grab Handles
4	Operator Seat with Seat Belt and Seat Bar
5	Tilt Cylinders
6	Bucket [A]
7	Bucket Steps
8	Step
9	Alternate Front Tie-down (Both Sides)
10	Front Auxiliary Quick Couplers

[A] Bucket — Several different buckets and other attachments are available for the Bobcat loader.

Rear View

Figure 5



NA18805A

REF	DESCRIPTION
11	Lift Arm Support
12	Lift Cylinder (Both Sides)
13	Rear Grille
14	Back-up Alarm
15	Rear Work Lights and Taillights
16	Rear Door
17	Rear Tie-down (Both Sides) Front Tie-down located behind Bucket
18	Frame Mounted Counterweights (Both Sides)
19	Track [A]
20	Lift Arm
21	Operator Cab (ROPS and FOPS) [B]

[A] Track — Standard tracks are shown. Track options are available for the Bobcat loader.

[B] ROPS — Roll-Over Protective Structure per ISO 3471 and FOPS — Falling-Object Protective Structure per ISO 3449, Level I. Level II is available.

FEATURES, ACCESSORIES, AND ATTACHMENTS

Standard Items

This model T66 Bobcat loader is equipped with the following standard items:

- 74 hp Bobcat Engine Turbo Tier 4 Diesel Engine
- Adjustable Seat
- Auxiliary Hydraulics: Variable Flow
- Bobcat Interlock Control System (BICS™)
- Bobcat Standard Display
- Bob-Tach® Attachment Mounting System
- Controls: Bobcat Standard
- Counterweights: Frame Mounted
- Enclosed Cab (includes: rear window and polycarbonate top window) ROPS and FOPS (Level I) Approved
- Engine / Hydraulic Systems Protection
- Front Horn / Back-up Alarm
- Glow Plugs (Automatically activated)
- LED Lights: Front and Rear
- Lift Arm Support
- Parking Brake
- Seat Bar
- Retractable Seat Belt
- Solid-Mounted Undercarriage with 8 Rollers
- Spark Arrester Device
- Tracks, Rubber – 320 mm (12.6 in)
- Cab Reseal Plug Kit
- Clear Side Enclosed Cab
- Controls: Selectable Joystick Controls (SJC) (Selectable 'ISO' or 'H' Pattern Control)
- Dual Direction Bucket Positioning (With On / Off Selection)
- Engine Block Heater
- Fire Extinguisher
- FOPS Kit (Level II)
- FOPS Window Kit
- Forestry Door and Window Kit
- Forestry Door Wiper
- Four-Way Flashers
- Front and Rear Light Guards
- High-Flow Auxiliary Hydraulics
- Hose Guide
- Hydraulic Muffler
- Keyed Ignition Kit
- LED Side Lighting
- Lift Kit (Four-Point, Single-Point)
- Power Bob-Tach Attachment Mounting System
- Premium LED Front Lights
- Radio
- Rear Auxiliary Hydraulics
- Rear Bumper Kit
- Rear Camera Kit
- Rear Window Wiper
- Reversing Fan
- Rotating Beacon
- Seat Belt with 3-Point Restraint (Standard on Two-Speed Models)
- Seat Belt – 3 in. Wide
- Sound Reduction Kit (Reduces noise at operator ear)
- Special Applications Kit
- Strobe Light
- Tailgate Guard Kit
- Tailgate Lock
- Torsion Suspension Undercarriage with 8 Rollers
- Track:
 - ▷ Multi-Bar Lug – 320 mm (12.6 in)
 - ▷ Rubber – 400 mm (15.75 in)
- Two-Speed Travel
- Windows:
 - ▷ Externally Removable Rear Window

Options And Accessories

Below is a list of some equipment available from your Bobcat dealer as Dealer and / or Factory Installed Accessories and Factory Installed Options. See your Bobcat dealer for other available options and accessories.

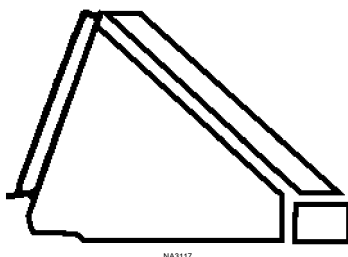
- Adjustable Heated Air Ride Suspension Seat
- Adjustable Suspension Seat
- Air Conditioning
- Attachment Control Device (ACD) (7-Pin, 14-Pin)
- Auto HVAC
- Auto Idle (Available only on SJC equipped loaders)
- Automatic Ride Control
- Auxiliary Hydraulics Coupler Guard
- Battery Disconnect Switch Kit
- Bobcat Touch Display
- Cab Door with Emergency Exit
- Cab Heater

- ▷ Polycarbonate Rear Window
- ▷ Polycarbonate Side Windows
- ▷ Side Windows

Specifications subject to change without notice and standard items may vary.

Buckets Available

Increase the versatility of your Bobcat machine with a variety of bucket styles and sizes.



Many bucket styles, widths, and different capacities are available for a variety of different applications. They include Construction and Industrial, Low Profile, Fertilizer, and Snow, to name a few. See your Bobcat dealer for the correct bucket for your Bobcat loader and application.

Attachments

These and other attachments are approved for use on this model loader. Do not use unapproved attachments. Attachments not manufactured by Bobcat may not be approved.

The versatile Bobcat loader quickly turns into a multijob machine with a tight-fit attachment hook-up ... from bucket to grapple to pallet fork, and a variety of other attachments.

See your Bobcat dealer for information about approved attachments and attachment Operation & Maintenance Manuals.

- Angle Broom
- Auger
- Bale Handler
- Blades — Box, Dozer, Snow, Snow V-Blade
- Breaker, Hydraulic
- Brush Saw
- Brushcat™ Rotary Cutter
- Buckets
- Chipper
- Combination Bucket
- Concrete Mixer
- Concrete Pump

- Digger
- Drop Hammer
- Dumping Hopper
- Flail Cutter
- Grader
- Grapples — Farm / Utility, Industrial, Root
- Landplane
- Landscape Rake
- Laser Equipment
- Mower
- Packer Wheel
- Pallet Fork
- Planer
- Rock Bucket
- Scarifier
- Scraper
- Seeder
- Silt Fence Installer
- Snow Pusher
- Snowblower
- Sod Layer
- Soil Conditioner
- Spreader
- Stabilizer, Rear
- Stump Grinder
- Sweeper
- Tiller
- Tilt-Tatch™
- Tree Spade
- Trench Compactor
- Trencher
- Utility Fork
- Utility Frame
- Vibratory Roller
- Water Kit
- Wheel Saw
- X-Change™ Frame

High-Flow Attachments

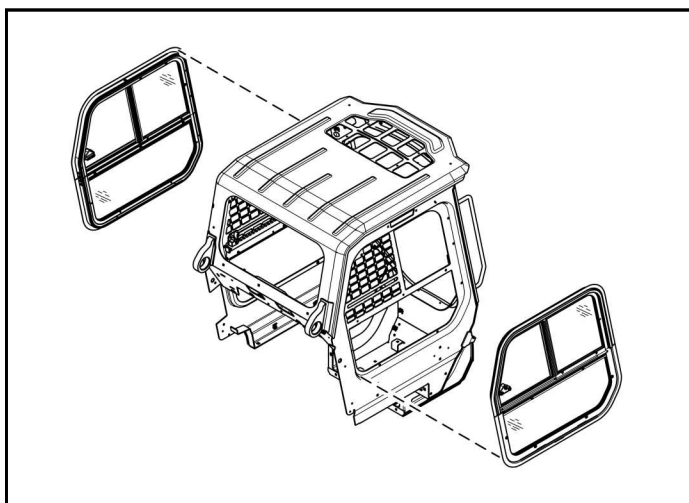
The following attachments are approved for use on High-Flow machines. See your Bobcat dealer for an updated list of approved attachments.

- Angle Broom
- Auger

- Brushcat™ Rotary Cutter
- Chipper
- Concrete Pump
- Flail Cutter
- Planer
- Snowblower
- Soil Conditioner
- Stump Grinder
- Tiller
- Trencher

Clear Side Enclosed Cab Option

Figure 6



Depending on machine specifications, windows are provided to function as guards. Damaged windows must be replaced with those of equivalent specification before the machine is used again. The machine must not be used with the window removed. The clear side enclosed cab windows are polycarbonate [Figure 6].

⚠ DANGER

MODIFICATION HAZARD

Crushing can cause serious injury or death.

- **DO NOT** operate if cab side windows are damaged or missing.
- Replace damaged or missing windows with Bobcat approved parts only. ◀

131-F07853PB

Inspecting And Maintaining Clear Side Enclosed Cab Option

- Inspect for cracks or damage. Replace if required.
- Prerinse with water to remove gritty materials.

- Wash with a mild household detergent and warm water.
- Use a sponge or soft cloth. Rinse well with water and dry with a clean soft cloth or rubber squeegee.

⚠ IMPORTANT

MACHINE DAMAGE HAZARD

Avoid polycarbonate window damage:

- Do not use abrasive or highly alkaline cleaners.
- Do not use cleaners containing ammonia.
- Do not clean with metal blades or scrapers. ◀

I-2402

Special Applications Kit

⚠ WARNING

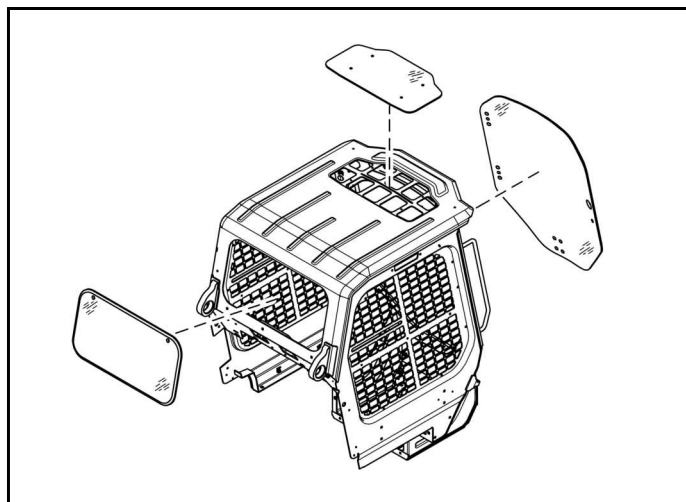
IMPACT AND PUNCTURE HAZARD

Flying debris or objects entering the operator cab can cause serious injury or death.

Some attachment applications can cause flying debris or objects to enter the front, top or rear cab openings. Install the Special Applications Kit and Top Guard (if applicable) to provide added operator protection in these applications. ◀

W-2737

Figure 7



NA15671

Available for special applications to restrict material from entering cab openings. Kit includes 12,7 mm (0.5 in) thick polycarbonate front door and polycarbonate rear window [Figure 7].

Polycarbonate top window (standard item) must be installed for special applications to restrict material from entering cab openings.

See your Bobcat dealer for availability.

Inspecting And Maintaining Special Applications Kit

- Inspect for cracks or damage. Replace if required.
- Prerinse with water to remove gritty materials.
- Wash with a mild household detergent and warm water.
- Use a sponge or soft cloth. Rinse well with water and dry with a clean soft cloth or rubber squeegee.

⚠ IMPORTANT

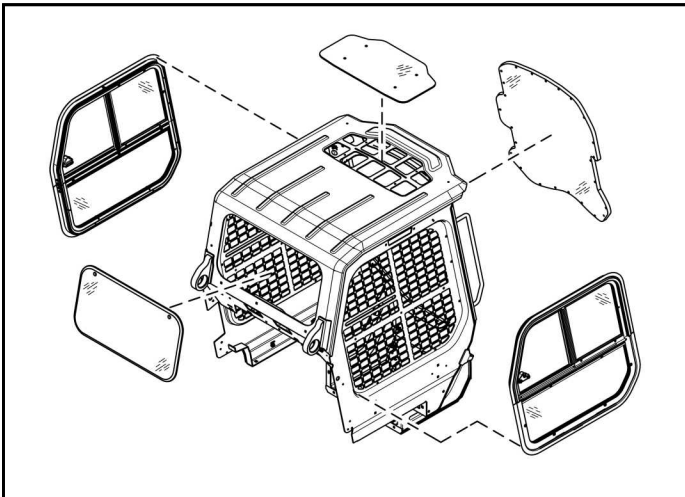
MACHINE DAMAGE HAZARD

Avoid polycarbonate window damage:
Do not use abrasive or highly alkaline cleaners.
Do not use cleaners containing ammonia.
Do not clean with metal blades or scrapers. ◀

I-2402

Forestry Door And Window Kit

Figure 8



NA15972

Available for special applications to prevent flying debris and objects from entering the cab. Kit includes 19,1 mm (0.75 in) thick laminated polycarbonate front door, polycarbonate side windows, and polycarbonate rear window [Figure 8].

Polycarbonate top window (standard item) must be installed as part of the Forestry Door And Window Kit to restrict material from entering cab openings.

The side windows of the clear side enclosed cab are polycarbonate and meet the side window requirements of the Forestry Door and Window kit to restrict material from entering cab openings.

Inspecting And Maintaining Forestry Door And Window Kit

- Inspect for cracks or damage. Replace if required.

- Order part number 7349287 if door frame is damaged and needs to be replaced.
- Order kit part number 7401369 if door polycarbonate is damaged and needs to be replaced.
- Prerinse with water to remove gritty materials.
- Wash with a mild household detergent and warm water.
- Use a sponge or soft cloth. Rinse well with water and dry with a clean soft cloth or rubber squeegee.

⚠ IMPORTANT

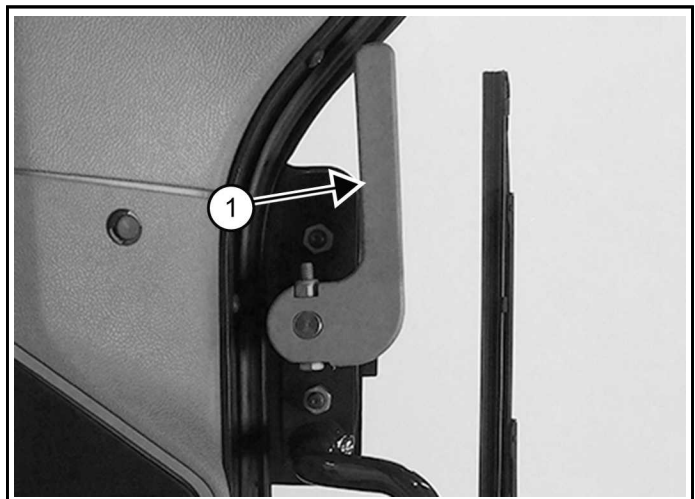
MACHINE DAMAGE HAZARD

Avoid polycarbonate window damage:
Do not use abrasive or highly alkaline cleaners.
Do not use cleaners containing ammonia.
Do not clean with metal blades or scrapers. ◀

I-2402

Forestry Door Emergency Exit

Figure 9



C200179b

- Inspect both emergency exit levers (Item 1) [Figure 9], linkages, and hardware for loose or damaged parts.
- Repair or replace if necessary.

SAFETY INSTRUCTIONS

Before Operation

Carefully follow the operating and maintenance instructions in this manual.

The Bobcat machine is highly maneuverable and compact. It is rugged and useful under a wide variety of conditions. This presents an operator with hazards associated with off highway, rough terrain applications, common with Bobcat machine usage.

The Bobcat machine has an internal combustion engine with resultant heat and exhaust. All exhaust gases can kill or cause illness so use the machine with adequate ventilation.

The dealer explains the capabilities and restrictions of the Bobcat machine and attachment for each application. The dealer demonstrates the safe operation according to Bobcat instructional materials, which are also available to operators. The dealer can also identify unsafe modifications or use of unapproved attachments. The attachments and buckets are designed for a Rated Operating Capacity. They are designed for secure fastening to the machine. The user must check with the dealer, or Bobcat literature, to determine safe loads of materials of specified densities for the machine - attachment combination.

The following publications and training materials provide information on the safe use and maintenance of the Bobcat machine and attachments:

- The Delivery Report is used to assure that complete instructions have been given to the new owner and that the machine and attachment are in safe operating condition.
- The Operation & Maintenance Manual delivered with the machine or attachment gives operating information as well as routine maintenance and service procedures. It is a part of the machine and can be stored in a container provided on the machine. Replacement Operation & Maintenance Manuals can be ordered from your Bobcat dealer.
- Machine signs (decals) instruct on the safe operation and care of your Bobcat machine or attachment. The signs and their locations are shown in the Operation & Maintenance Manual. Replacement signs are available from your Bobcat dealer.
- An Operator's Handbook is fastened to the operator cab of the machine. Its brief instructions are convenient for the operator. The handbook is available from your dealer in an English edition or one of many other languages. See your Bobcat dealer for more information on translated versions.
- The AEM Safety Manual delivered with the machine gives general safety information.

- Operator and Service Safety Training courses are available through your Bobcat dealer. These courses provide information on safe and efficient operation and correct service procedures.
- See the Publications and Training Resources page in this manual or your Bobcat dealer for Service and Parts Manuals, printed materials, videos, or training courses available. Also check the Bobcat website www.bobcat.com or www.bobcat.com/training.
- Online operator training courses are also available. Go to www.bobcatonlinetraining.com for a listing of available courses and more information.

The dealer and owner / operator review the recommended uses of the product when delivered. If the owner / operator will be using the machine for a different application(s) he or she must ask the dealer for recommendations on the new use.

Call Before You Dig



Dial 811 (USA Only)

Dial 1-888-258-0808 (USA & Canada)

When you call, you will be directed to a location in your state / province / city for information about buried lines (telephone, cable TV, water, sewer, gas, etc.).

Safe Operation Is The Operator's Responsibility



Safety Alert Symbol

This symbol with a warning statement means:
"Warning, be alert! Your safety is involved!" Carefully read the message that follows.

⚠ WARNING

INSUFFICIENT INSTRUCTIONS HAZARD
Untrained operators or failure to follow instructions can cause serious injury or death.
Operators must have adequate training and instruction before operating. ◀

W-2001

⚠ IMPORTANT

This notice identifies procedures which must be followed to avoid damage to the machine. ◀

I-2015

⚠ WARNING

The signal word **WARNING** on the machine and in the manuals indicates a potentially hazardous situation which, if not avoided, could result in death or serious injury. ◀

W-2044

⚠ DANGER

The signal word **DANGER** on machine signs and in the manuals indicates a hazardous situation which, if not avoided, will result in death or serious injury. ◀

D-1002

The machine and attachment must be in good operating condition before use.

Check all of the items on the Service Schedule decal in the Every 10 Hours section or as shown in the Operation & Maintenance Manual.

Safe Operation Needs A Qualified Operator

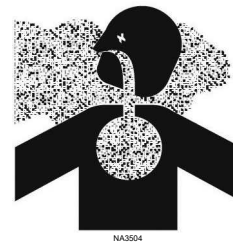
For an operator to be qualified, he or she must not use drugs or alcoholic drinks which impair alertness or coordination while working. An operator who is taking prescription drugs must get medical advice to determine if he or she can safely operate a machine.

A Qualified Operator Must Do The Following

- Understand the written instructions, rules, and regulations.
 - ▷ The written instructions from Bobcat Company include the Delivery Report, Operation & Maintenance Manual, Operator's Handbook, Safety Manual, and machine signs (decals).
 - ▷ Check the rules and regulations at your location. The rules may include an employer's work safety requirements. Regulations may apply to local driving requirements or use of a Slow Moving Vehicle (SMV) emblem. Regulations may identify a hazard such as a utility line.
- Have training with actual operation.
 - ▷ Operator training must consist of a demonstration and verbal instruction. This training is given by your Bobcat dealer before the product is delivered.
 - ▷ The new operator must start in an area without bystanders and use all the controls until he or she can operate the machine and attachment safely

under all conditions of the work area. Always fasten seat belt before operating.

- ▷ Operator Training Courses are available from your Bobcat dealer in English and Spanish. They provide information for safe and efficient equipment operation. Safety videos are also available.
- ▷ Service Safety Training Courses are available from your Bobcat dealer. They provide information for safe and correct service procedures.
- Know the work conditions.
 - ▷ Know the weight of the materials being handled. Avoid exceeding the Rated Operating Capacity of the machine. Material that is very dense will be heavier than the same volume of less dense material. Reduce the size of load if handling dense material.
 - ▷ The operator must know any prohibited uses or work areas, for example, he or she needs to know about excessive slopes.
 - ▷ Know the location of any underground lines. Call local utilities or the toll free phone number found in the Before Operation section of this manual.
 - ▷ Wear tight fitting clothing. Always wear safety glasses when doing maintenance or service. Safety glasses, respiratory equipment, hearing protection or Special Applications Kits are required for some work. See your Bobcat dealer about Bobcat safety equipment for your model.

Silica Dust Exposure

Silica dust can cause lung disease and is known to the state of California to cause cancer.

Cutting or drilling concrete containing sand or rock containing quartz may result in exposure to silica dust.

Do not exceed Permissible Exposure Limits (PEL) to silica dust as determined by OSHA or other job site Rules and Regulations. Use a respirator, water spray or other means to control dust.

FIRE PREVENTION



Maintenance

The machine and some attachments have components that are at high temperatures under normal operating conditions. The primary source of high temperatures is the engine and exhaust system. The electrical system, if damaged or incorrectly maintained, can be a source of arcs or sparks.

Flammable debris (leaves, straw, etc.) must be removed regularly. If flammable debris is allowed to accumulate, it can cause a fire hazard. Clean often to avoid this accumulation. Flammable debris in the engine compartment is a potential fire hazard.

The operator's area, engine compartment, and engine cooling system must be inspected every day and cleaned if necessary to prevent fire hazards and overheating.

All fuels, most lubricants, and some coolants mixtures are flammable. Flammable fluids that are leaking or spilled onto hot surfaces or onto electrical components can cause a fire.

Operation

Do not use the machine where exhaust, arcs, sparks, or hot components can contact flammable material, explosive dust, or gases.

Electrical



P200082

Check all electrical wiring and connections for damage. Keep the battery terminals clean and tight. Repair or replace any damaged part or wires that are loose or frayed.

Battery gas can explode and cause serious injury. Use the procedure in the Operation & Maintenance Manual for connecting the battery and for jump starting. Do not jump start or charge a frozen or damaged battery. Keep any open flames or sparks away from batteries. Do not smoke in battery charging area.

Hydraulic System

Check hydraulic tubes, hoses and fittings for damage and leakage. Never use open flame or bare skin to check for

leaks. Hydraulic tubes and hoses must be properly routed and have adequate support and secure clamps. Tighten or replace any parts that show leakage.

Always clean fluid spills. Do not use gasoline or diesel fuel for cleaning parts. Use commercial nonflammable solvents.

Fueling



P200084

Stop the engine and let it cool before adding fuel. No smoking! Do not refuel a machine near open flames or sparks. Fill the fuel tank outdoors.

Ultra Low Sulfur Diesel (ULSD) poses a greater static ignition hazard than earlier diesel formulations with higher sulfur content. Avoid death or serious injury from fire or explosion. Consult with your fuel or fuel system supplier to ensure the delivery system is in compliance with fueling standards for proper grounding and bonding practices.

Starting

Do not use ether or starting fluids on any engine that has glow plugs or air intake heater. These starting aids can cause explosion and injure you or bystanders.

Use the procedure in the Operation & Maintenance Manual for connecting the battery and for jump starting.

Spark Arrester Exhaust System

The spark arrester exhaust system is designed to control the emission of hot particles from the engine and exhaust system, but the muffler and the exhaust gases are still hot.

Check the spark arrester exhaust system regularly to make sure it is maintained and working properly. Use the procedure in the Operation & Maintenance Manual for cleaning the spark arrester muffler (if equipped).

Welding And Grinding

Always clean the machine and attachment, disconnect the battery, and disconnect the wiring from the Bobcat controllers before welding. Cover rubber hoses, battery, and all other flammable parts. Keep a fire extinguisher near the machine when welding.

Have good ventilation when grinding or welding painted parts. Wear a dust mask when grinding painted parts. Toxic dust or gas can be produced.

Dust generated from repairing nonmetallic parts such as hoods, fenders, or covers can be flammable or explosive.

Repair such components in a well ventilated area away from open flames or sparks.

Fire Extinguishers



P200083

Know where fire extinguishers and first aid kits are located and how to use them. Inspect the fire extinguisher and service the fire extinguisher regularly. Obey the recommendations on the instructions plate.

PUBLICATIONS AND TRAINING RESOURCES

The following publications are also available for your Bobcat loader. You can order them from your Bobcat dealer. For the latest information on Bobcat products and the Bobcat Company, visit our website at Bobcat.com/training.



OPERATION & MAINTENANCE MANUAL

Complete instructions on the correct operation and the routine maintenance of your Bobcat loader.

7353049enUS



SKID-STEER LOADER ONLINE OPERATOR TRAINING

Provides information on safe and efficient operation and introduces the key components and safety features of skid-steer loaders.

See your Bobcat dealer to purchase an enrollment card or visit bobcatonlinetraining.com for more information.

7341494



SKID-STEER LOADER OPERATOR TRAINING COURSE

Introduces operator to step-by-step basics of skid-steer loader operation.

7249275 (English)

7249278 (Spanish)



SAFETY MANUAL

Gives basic safety procedures and warnings for your Bobcat loader.

6556500 (English and Spanish)



OPERATOR SAFETY DVD

Gives basic safety instructions for many Bobcat products including loaders.

6904762 (English and Spanish)

LOADER SAFETY VIDEO



Scan the code to watch the loader safety video or view at Bobcat.com/training.

(Mobile device with quick response code application required)



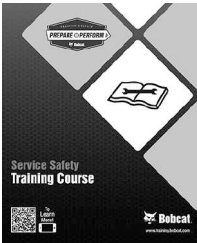
SERVICE MANUAL



Complete maintenance instructions for your Bobcat loader.

Compact Track Loader
S670TR & S690

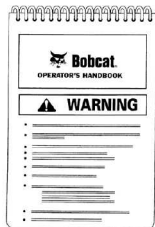
7353050enUS



SERVICE SAFETY TRAINING COURSE

Introduces service technicians to step-by-step basics of proper and safe maintenance and servicing procedures.

7297250



OPERATOR'S HANDBOOK

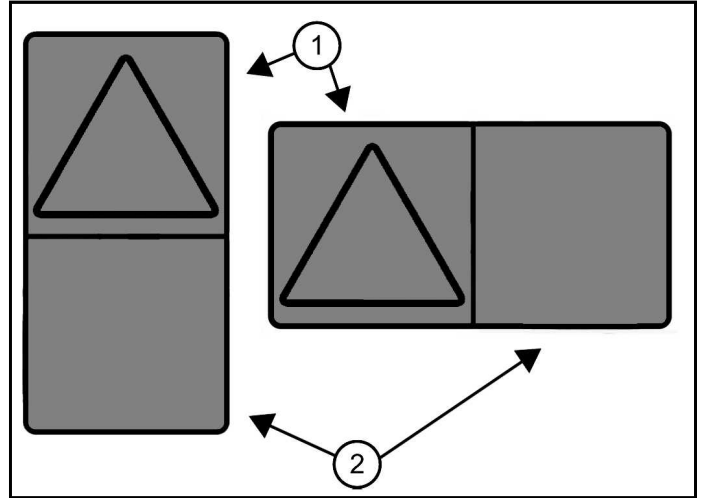
Gives basic operation instructions and safety warnings.

7418150enUS

PICTORIAL ONLY SAFETY SIGNS

Safety signs are used to alert the equipment operator or maintenance person to hazards that may be encountered in the use and maintenance of the equipment. The location and description of the safety signs are detailed in this section. Please become familiarized with all safety signs installed on the machine / attachment.

Figure 10



The format consists of the hazard panel(s) (Item 1) [Figure 10] and the avoidance panel(s) (Item 2) [Figure 10].

Hazard Panels: Depict a potential hazard enclosed in a safety alert triangle.

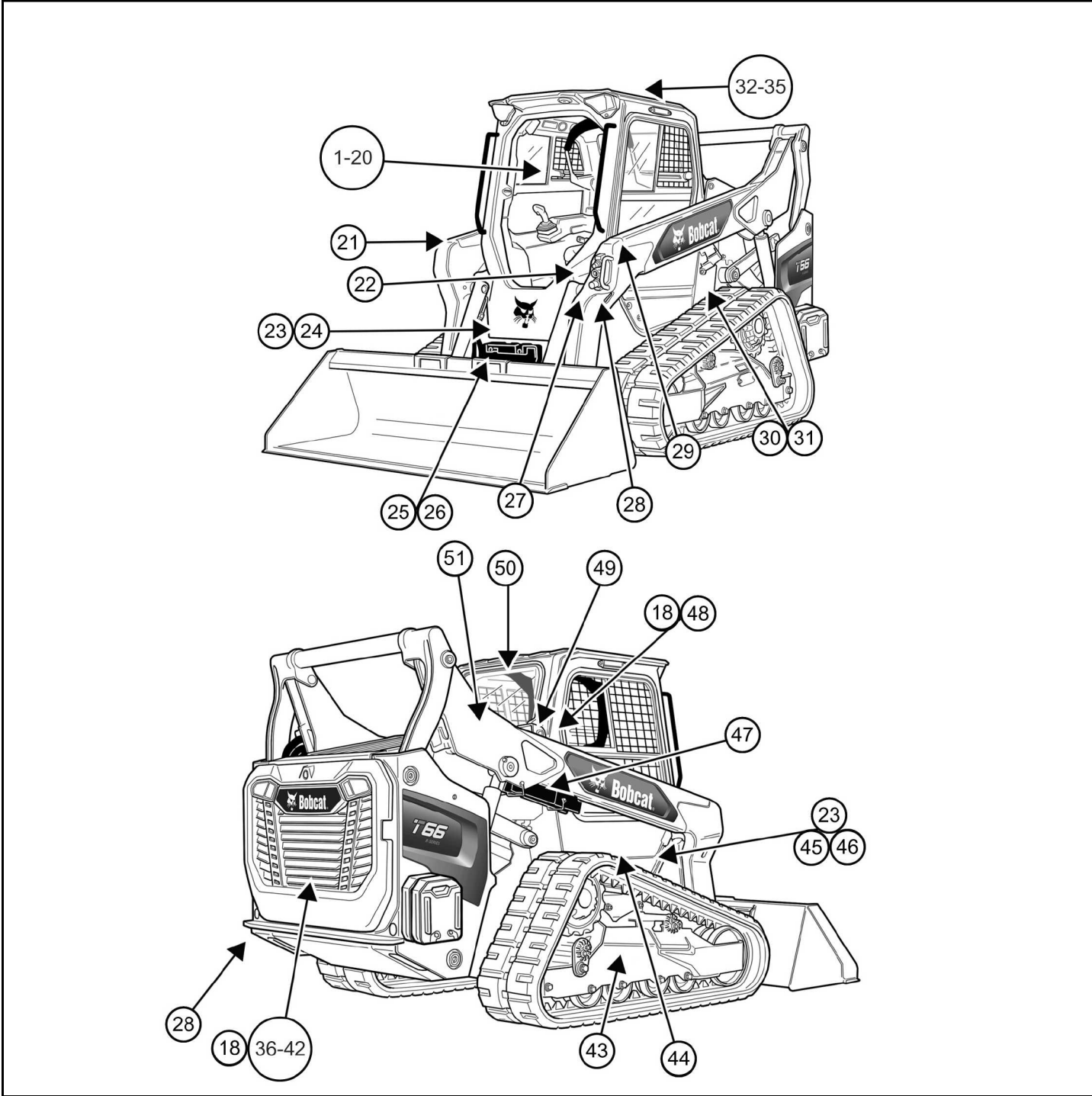
Avoidance Panels: Depict actions required to avoid the hazards.

A safety sign may contain more than one hazard panel and more than one avoidance panel.

MACHINE SIGNS (DECALS)

Follow the instructions on all Machine Signs (Decals) that are on the machine. Replace any damaged machine signs and be sure they are in the correct locations. Machine signs are available from your Bobcat dealer.

Figure 11



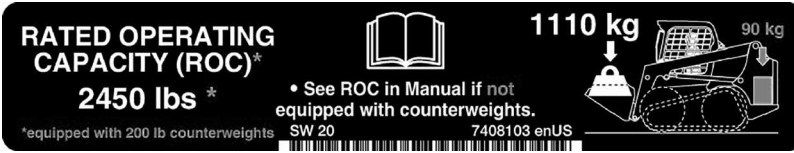
NA3842A

REF	DECAL	WARNING (IF APPLICABLE)
-----	-------	----------------------------

Rated Operating Capacity (7408103)

This safety sign is located inside the operator cab on the left side of loaders equipped with a solid-mounted undercarriage.

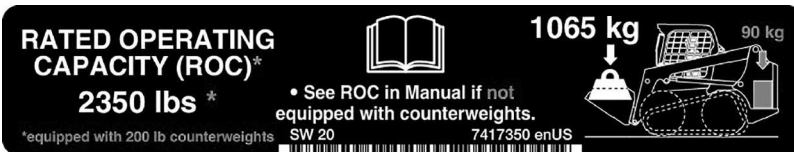
1



Rated Operating Capacity (7417350)

This safety sign is located inside the operator cab on the left side of loaders equipped with a torsion suspension undercarriage.

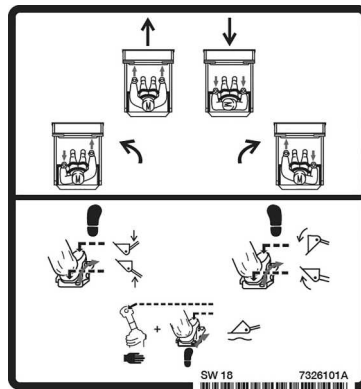
2



Standard Controls (7326101)

This safety sign is located inside the operator cab on the lower left side of loaders equipped with standard controls.

3



REF

DECAL

WARNING
(IF APPLICABLE)

To Leave The Loader (7341319)

This safety sign is located inside the operator cab on the lower left side of loaders equipped with standard controls.

4


 **WARNING**
GENERAL HAZARD

Failure to follow instructions can cause serious injury or death.

To leave the loader safely:

1. Lower the lift arms and put attachment flat on the ground.
2. Stop the engine.
3. Engage the brake.
4. Raise seat bar.
5. Move pedals and hand controls until both lock.
6. Exit the loader. ◀

W-2538

Standard Controls Operation (7326100)

This safety sign is located inside the operator cab on the lower left side of loaders equipped with standard controls.

5

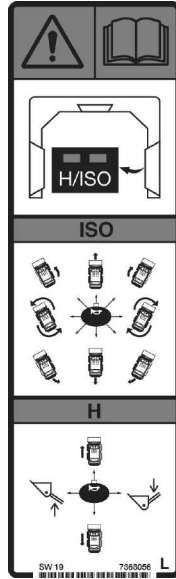


REF	DECAL	WARNING (IF APPLICABLE)
-----	-------	----------------------------

SJC Controls (7368056)

This safety sign is located inside the operator cab on the left armrest of loaders equipped with SJC controls.

6



! WARNING

UNINTENDED MACHINE MOVEMENT HAZARD
Accidental loader movement can cause serious injury or death.

- Drive, lift arm and tilt functions operate on different joysticks in each control mode.
- Know and understand the selected control mode before operating.

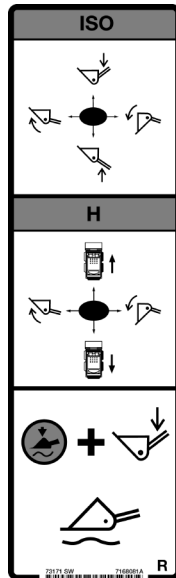
READ AND UNDERSTAND THE OPERATION & MAINTENANCE MANUAL FOR MORE INFORMATION. ◀

W2785

SJC Controls (7168081)

This safety sign is located inside the operator cab on the right armrest of loaders equipped with SJC controls.

7



REF

DECAL

WARNING
(IF APPLICABLE)

To Leave The Loader (7330860)

This safety sign is located inside the operator cab on the lower left side of loaders equipped with SJC controls.

8


 **WARNING**
GENERAL HAZARD

Failure to follow instructions can cause serious injury or death
To leave the loader safely:

1. Lower the lift arms and put attachment flat on the ground.
2. Stop the engine.
3. Engage the brake.
4. Raise seat bar.
5. Exit the loader. ◀

W-2839

General Hazard Warning (7323814)

This safety sign is located inside the operator cab on the lower right side.

9


 **WARNING**
GENERAL HAZARD

Untrained operators or failure to follow instructions can cause serious injury or death.

Operators must have adequate training and instruction before operating the machine. Read Operation & Maintenance Manual and Handbook. Never modify equipment or use attachments not approved by Bobcat Company.

- On slopes, keep heavy end of machine uphill.
- Do not travel or turn with lift arms up. Load, unload, and turn on flat level ground. **DO NOT** exceed Rated Operating Capacity (See decal in cab). ◀

W-2837

This as a preview PDF file from best-manuals.com



Download full PDF manual at best-manuals.com