



PARTS CATALOG

WHEEL LOADER

621E
TIER 3



BD07G056-01

TABLE OF CONTENTS

- General Information
- Section 2 – Engine
- Section 3 – Fuel System
- Section 4 – Electrical System
- Section 5 – Tracks / Steering
- Section 6 – Power train
- Section 7 – Brakes
- Section 8 – Hydraulics
- Section 9 – Chassis/Attachments
- Index

CNH America, LLC reserves the right to make improvements in design or changes in specifications at any time without incurring any obligation to install them on units previously sold.

All data given in this publication is subject to production variations. Dimensions and weights are only approximate. Illustrations do not necessarily show products in standard condition. For exact information about any particular product, please consult your Dealer

This unit first became available 09-2007			
REVISION HISTORY			
Issue	Issue Date	Applicable Machines	Remarks
First Edition	01Sept07	621E Tier 3 Wheel Loader	87519729 NA

TABLE OF CONTENTS

02-01	MOUNTING, ENGINE
02-02	RADIATOR - HOSES AND TUBES
02-03	COOLER, CHARGE AIR
02-04	COOLER, CHARGE AIR - HOSES AND TUBES
02-05	FAN DRIVE
02-06	AIR CLEANER - AIR INTAKE PARTS
02-06A	AIR CLEANER ASSY
02-07	AIR CLEANER ASSY - PRECLEANER ASSY
02-08	MUFFLER - EXHAUST SYSTEM
02-09	OIL FILL, ENGINE
02-10	OIL PUMP - ENGINE
02-11	OIL FILTER - ENGINE
02-12	OIL FILTER AND COOLER
02-13	OIL PUMP, PAN
02-14	OIL PUMP, PAN - DRAIN LINE - COVER
02-15	BREATHER - ENGINE
02-16	TURBOCHARGER - DRAIN LINE
02-17	TURBOCHARGER
02-18	WATER PUMP
02-19	WATER PUMP - TENSIONER ASSY
02-20	CYLINDER BLOCK
02-21	CYLINDER BLOCK - PLUG ASSY
02-22	CYLINDER BLOCK - NOISE CONTROL
02-23	CYLINDER HEAD
02-24	CYLINDER HEAD - ASSEMBLY
02-25	CYLINDER HEAD - COVERS
02-26	CRANKSHAFT
02-27	CRANKSHAFT - PULLEY
02-28	FLYWHEEL - ENGINE
02-29	FLYWHEEL HOUSING
02-30	GEAR COVER - REAR HOUSING
02-31	GEAR COVER - PLATE
02-32	FRONT GEAR COVER
02-33	ROCKER ARMS
02-33A	ROCKER ARMS - ASSEMBLY
02-34	CAMSHAFT
02-35	PISTONS
02-36	CONNECTING ROD
02-37	INTAKE MANIFOLD
02-38	EXHAUST MANIFOLD
02-39	COOLING SYSTEM - ENGINE
02-40	THERMOSTAT - ENGINE COOLING SYSTEM
02-41	ENGINE - LIFT HOOKS
02-42	ENGINE - BLOCK HEATER
03-01	FUEL LINES - COOLER, FUEL
03-02	FILTER, FUEL - WATER SEPERATOR
03-03	FILTER, FUEL
03-04	FUEL TANK FILLER - SENDER
03-04A	FUEL TANK - BREATHER
03-05	FUEL INJECTION PUMP
03-06	FUEL INJECTION SYSTEM

TABLE OF CONTENTS

03-07	FUEL INJECTION SYSTEM - INJECTOR
03-08	FUEL INJECTION SYSTEM - FUEL, SUPPLY
03-09	FUEL INJECTION SYSTEM - MODULE, ENGINE CONTROL
03-10	FUEL INJECTION SYSTEM - HARNESS, ENGINE
03-11	FUEL INJECTION SYSTEM - DRAIN LINE
04-01	STARTER
04-02	ALTERNATOR ASSY
04-02A	ALTERNATOR - MOUNTING WITH AIR CONDITIONING
04-02B	ALTERNATOR - MOUNTING WITHOUT AIR CONDITIONING
04-03	HARNESS, FRONT - Z-BAR
04-03A	HARNESS, FRONT - XT
04-04	HARNESS - PANEL, CONTROL
04-05	HARNESS, ENGINE
04-06	HARNESS, ENGINE - THROTTLE CONTROL
04-07	HARNESS, ENGINE - FUSES AND RELAYS
04-08	HARNESS - CAB ROOF
04-09	HARNESS, HOOD - ALARM, BACKUP
04-10	HARNESS, TRANSMISSION
04-11	HARNESS - GRID HEATER
04-11A	GRID HEATER
04-12	HORN, FRONT
04-13	PANEL, CONTROL - SWITCHES
04-14	PANEL, CONTROL - FUSE AND RELAY MOUNTING
04-15	ELECTRICAL - STEERING COLUMN / INSTRUMENT CLUSTER
04-16	ELECTRICAL - TRANSMISSION CONTROL
04-17	ELECTRICAL - STEERING, AUXILIARY
04-18	MOUNTING - LAMPS, FRONT
04-19	LAMP ASSY - LAMPS, FRONT
04-20	MOUNTING - LAMPS, REAR COMBINATION
04-21	CAB - WORK LAMPS
04-22	BEACON ASSY, ROTATING - MOUNTING
04-23	CAB - WIPER, FRONT
04-23A	CAB - WIPER, REAR
04-24	RADIO - 12 VOLT
04-24A	RADIO - 12 VOLT INSTALLATION
04-25	BATTERY MOUNTING
04-25A	BATTERY MOUNTING - HEAVY DUTY
04-26	BATTERY - CABLES
04-27	LICENSE PLATE LIGHT
04-28	WINDSHIELD WASHER MOUNTING
05-01	STEERING WHEEL
05-02	STEERING COLUMN
05-02A	STEERING COLUMN - ACCESSORY
05-03	STEERING COLUMN - TRIM
05-04	HYDRAULICS - STEERING
05-05	HYDRAULICS - STEERING - AUXILIARY
05-06	STEERING CONTROL VALVE
05-07	STEERING - AUXILIARY - MANIFOLD ASSEMBLY
05-08	STEERING - AUXILIARY - PUMP
05-09	STEERING - CYLINDER - HYDRAULICS
05-10	STEERING - CYLINDER ASSY

TABLE OF CONTENTS

06-01	MOUNTING - TRANSMISSION - TRANSMISSION FILL TUBE
06-02	HYDRAULICS - TRANSMISSION
06-03	TRANSMISSION - FILTER, OIL AND FILLER COVER
06-04	TRANSMISSION - CONVERTER, COVER AND INPUT SHAFT
06-05	TRANSMISSION - INPUT SHAFT
06-06	TRANSMISSION ASSY - HOUSING
06-07	TRANSMISSION ASSY - HOUSING TUBES
06-08	TRANSMISSION - CLUTCH ASSY, FIRST
06-09	TRANSMISSION - CLUTCH ASSY, SECOND
06-10	TRANSMISSION - CLUTCH ASSY, THIRD
06-11	TRANSMISSION - CLUTCH ASSY, FOURTH
06-12	TRANSMISSION - CLUTCH ASSY, FORWARD
06-13	TRANSMISSION - CLUTCH ASSY, REVERSE
06-14	TRANSMISSION - SHAFT, OUTPUT
06-15	TRANSMISSION - POWER TAKE OFF
06-16	TRANSMISSION - VALVE PLATES
06-17	TRANSMISSION - VALVE, CONTROL
06-18	TRANSMISSION - VALVE, CONTROL
06-19	TRANSMISSION - VALVE, REGULATOR AND OIL PUMP
06-20	TRANSMISSION - SENSOR, SPEED AND PUMP COVER
06-21	AXLE, REAR - STOP
06-22	AXLE, FRONT - MOUNTING
06-22A	AXLE, FRONT - HOUSING
06-22B	AXLE, FRONT - DIFFERENTIAL CARRIER
06-22C	AXLE, FRONT - DIFFERENTIAL
06-22D	AXLE, FRONT - BRAKE
06-22E	AXLE, FRONT - HUB, PLANETARY
06-23	AXLE, REAR - MOUNTING
06-23A	AXLE, REAR - HOUSING
06-23B	AXLE, REAR - DIFFERENTIAL CARRIER
06-23C	AXLE, REAR - DIFFERENTIAL
06-23D	AXLE, REAR - BRAKE
06-23E	AXLE, REAR - HUB, PLANETARY
06-24	DRIVE SHAFT MOUNTING
06-25	DRIVE SHAFT, FRONT
06-26	DRIVE SHAFT, CENTER
06-27	DRIVE SHAFT, REAR
06-28	DRIVE SHAFT, ENGINE
06-29	WHEELS
07-01	BRAKE, PARKING
07-02	BRAKE PEDALS
07-03	HYDRAULICS - BRAKE, MAIN - PUMP
07-03A	HYDRAULICS - BRAKE, MAIN - AXLE
07-03B	HYDRAULICS - BRAKE, MAIN - ACCUMULATOR
07-03C	HYDRAULICS - BRAKE, MAIN - PARKING BRAKE
07-03D	HYDRAULICS - BRAKE, MAIN - RESERVOIR
07-04	HYDRAULICS - BRAKE - PUMP ASSY
07-05	VALVE ASSY - BRAKE
08-01	HYDRAULIC RESERVOIR - ASSEMBLY
08-01A	HYDRAULICS - OIL COOLER MOUNTING
08-02	HYDRAULIC RESERVOIR - FILTER

TABLE OF CONTENTS

08-02A	HYDRAULICS - FILTER, OIL
08-03	HYDRAULICS - RESERVOIR TO HYDRAULIC PUMP
08-04	PUMP ASSY
08-05	HYDRAULICS - LOADER LIFT AND BUCKET (Z BAR, XR LOADER)
08-06	HYDRAULICS - LOADER LIFT (XT LOADER)
08-07	HYDRAULICS - LOADER BUCKET (XT LOADER) - RIGHT SIDE
08-07A	HYDRAULICS - LOADER BUCKET (XT LOADER) - LEFT SIDE
08-08	HYDRAULICS - LOADER AUXILIARY (Z BAR LOADER)
08-09	HYDRAULICS - LOADER AUXILIARY (XR LOADER)
08-10	HYDRAULICS - LOADER AUXILIARY (XT LOADER)
08-11	HYDRAULICS - COUPLER (Z BAR LOADER)
08-12	HYDRAULICS - COUPLER (XR LOADER)
08-13	HYDRAULICS - COUPLER (XT LOADER)
08-14	HYDRAULICS - COUPLER LOCKING
08-15	CYLINDER ASSY - LOADER LIFT
08-16	CYLINDER ASSY - LOADER BUCKET (Z BAR LOADER)
08-17	CYLINDER ASSY - LOADER BUCKET (XR LOADER)
08-18	CYLINDER ASSY - LOADER BUCKET (XT LOADER)
08-19	HYDRAULICS - STANDARD BYPASS
08-19A	HYDRAULICS - COOLER WITHOUT BYPASS
08-19B	HYDRAULICS - THERMAL BYPASS
08-20	HYDRAULICS - RIDE CONTROL
08-20A	VALVE ASSY - RIDE CONTROL DIRECTIONAL (RSM2-16)
08-21	HYDRAULICS - NON- RIDE CONTROL
08-22	HYDRAULICS - FAN DRIVE
08-23	VALVE, FAN RELIEF - MOUNTING
08-23A	VALVE ASSY - FAN RELIEF
08-24	VALVE, FAN SPEED AND REVERSER - MOUNTING
08-24A	VALVE ASSY - FAN SPEED AND REVERSER
08-25	HYDRAULICS - LOADER CONTROL, REMOTE
08-26	VALVE, CONTROL - MOUNTING, TWO SPOOL - (Z-BAR/XR/XT)
08-26A	VALVE, CONTROL - MOUNTING, THREE SPOOL - (Z-BAR/XR/XT)
08-26B	VALVE, CONTROL - MOUNTING, FOUR SPOOL - (Z-BAR/XR/XT)
08-27	VALVE ASSY - LOADER CONTROL - TWO, THREE, FOUR SPOOL - (Z-BAR/XR)
08-27A	VALVE ASSY - PISTON AXIS - (Z-BAR/XR)
08-27B	VALVE ASSY - LOADER CONTROL -VALVE SECTION - (Z-BAR/XR)
08-28	VALVE ASSY - LOADER CONTROL - TWO, THREE, FOUR SPOOL - (XT)
08-28A	VALVE ASSY - PISTON AXIS - (XT)
08-28B	VALVE ASSY - LOADER CONTROL - VALVE SECTION - (XT)
08-29	LOADER CONTROL - JOYSTICK CONTROL MOUNTING
08-29A	VALVE ASSY - JOYSTICK CONTROL
08-29B	VALVE ASSY - JOYSTICK CONTROL
08-30	LOADER CONTROL - JOYSTICK WITH SINGLE LEVER MOUNTING
08-30A	VALVE ASSY - JOYSTICK WITH SINGLE LEVER
08-31	LOADER CONTROL - JOYSTICK WITH DUAL LEVER MOUNTING
08-31A	VALVE ASSY - JOYSTICK WITH DUAL LEVER
08-32	LOADER CONTROL - THREE LEVER MOUNTING
08-32A	VALVE ASSY - 3 LEVER LOADER CONTROL
08-33	BLOCK MOUNTING - COUPLER, 3 SPOOL HOSES
09-01	CONTROL - RETURN-TO-DIG (Z-BAR)
09-02	CONTROL - RETURN-TO-DIG (XR)

TABLE OF CONTENTS

09-03	CONTROL - RETURN-TO-DIG (XT LOADER)
09-04	CONTROL - BUCKET HEIGHT AND RETURN-TO-TRANSPORT (Z-BAR LOADER)
09-05	CONTROL - BUCKET HEIGHT AND RETURN-TO-TRANSPORT (XR LOADER)
09-06	CONTROL - BUCKET HEIGHT AND RETURN-TO-TRANSPORT (XT LOADER)
09-07	FRAME - LOADER LIFT (Z-BAR)
09-07A	FRAME - LOADER LIFT (XR)
09-07B	FRAME - LOADER LIFT (XT)
09-08	BUCKETS - ATTACHMENT (Z BAR LOADER)
09-08A	BUCKETS - ATTACHMENT (XT LOADER)
09-09	COUPLER, HYDRAULIC - Z-BAR - JRB
09-09A	COUPLER, HYDRAULIC - Z-BAR - ACS
09-09B	COUPLER, HYDRAULIC - XT - JRB
09-09C	COUPLER, HYDRAULIC - XT - ACS
09-10	LOADER BUCKET - WITH BOLT ON TEETH, SEGMENTS AND SKID PADS
09-11	LOADER BUCKET - WITH BOLT ON EDGE AND SKID PADS
09-12	FRAME, FRONT (Z-BAR, XR)
09-13	FRAME, FRONT (XT)
09-14	FRAME, REAR
09-15	ARTICULATION JOINT
09-16	HOOD
09-17	HOOD - MOUNTING
09-18	COVERS - BATTERY BOX
09-19	COVERS - CAB AND CANOPY, LOWER
09-19A	COVERS - FRAME, REAR
09-20	FENDERS, FRONT
09-20A	FENDERS, FRONT - WIDE
09-21	FENDERS, REAR - STANDARD
09-22	FENDERS, REAR - WIDE
09-23	FENDERS, REAR - GUARD
09-24	STEPS - LEFT
09-25	STEPS - RIGHT
09-26	SOUNDPROOFING - ENGINE
09-27	PLATE, SKID
09-28	CAB - MOUNTING
09-29	CAB - GLASS, FRONT
09-30	CAB - GLASS, REAR
09-31	CAB - INTERIOR TRIM
09-31A	CAB - INTERIOR TRIM - COLUMNS
09-31B	CAB - INTERIOR TRIM - ROOF
09-32	CAB - EXTERIOR TRIM
09-33	CAB - WINDOW, RIGHT-HAND-UPPER
09-33A	CAB - WINDOW, RIGHT-HAND-UPPER
09-34	CAB - WINDOW, RIGHT-HAND-LOWER
09-35	CAB - DOOR MOUNTING
09-35A	CAB - DOOR
09-36	CAB - MIRRORS
09-37	CAB - CARPET
09-38	CAB - SUNVISOR
09-39	CAB - COMPONENTS
09-40	CAB - WORK LAMPS
09-41	CAB - CONVENIENCE PACKAGE

TABLE OF CONTENTS

09-42	SEAT - MOUNTING/SEAT BELTS
09-42A	SEAT ASSY, MECHANICAL SUSPENSION
09-42B	SEAT ASSY, MECHANICAL SUSPENSION
09-42C	SEAT ASSY, AIR SUSPENSION
09-42D	SEAT ASSY, AIR SUSPENSION
09-43	CAB - HEATER AND AIR CONDITIONING DUCTS
09-43A	CAB - HEATER AND AIR CONDITIONING DUCTS
09-44	COVERS - DRIVE BELT (WITH AIR CONDITIONING)
09-44A	COVERS - DRIVE BELT (WITHOUT AIR CONDITIONING)
09-44B	COVERS - CAB - WITHOUT AIR CONDITIONING
09-45	HEATER - MOUNTING
09-45A	HEATER
09-46	HEATING HOSES
09-47	AIR CONDITIONING - MOUNTING
09-47A	AIR CONDITIONING
09-48	AIR CONDITIONING - CONDENSER
09-49	AIR CONDITIONING HOSES
09-50	COUNTERWEIGHT
09-50A	COUNTERWEIGHT - HEAVY DUTY
09-51	FIRE EXTINGUISHER
09-52	TOOL BOX
09-53	LICENSE PLATE MOUNTING
09-54	DECALS - MODEL
09-55	DECALS - COMMON TO MODEL
09-56	DECALS - CAB
09-57	DECALS - ENGLISH
09-58	DECALS - FRENCH CANADIAN
09-59	DECALS - LATIN AMERICAN SPANISH

GENERAL INFORMATION

PROPRIETARY NOTICE

The contents of this manual are proprietary data of this company. Reproduction or use of any part for other than the operation and maintenance of our equipment is permissible only if expressly authorized in writing.

Additional copies may be obtained from your dealer. Address requests for copies to your Dealer and refer to the publication part number appearing on the bottom of the rear catalog cover or on the title page.

COMPANY POLICY

Company policy, which is one of continuous improvement, reserves the right to change prices and to make changes in design and specification at any time without notice and without obligation to modify units previously built.

All data given in this book is subject to production variations. Dimensions and weights are approximate only and the illustrations do not necessarily show machines in standard condition. For exact information about any particular machine please consult your dealer.

PARTS AND ACCESSORIES

Genuine parts and accessories have been specifically designed for these machines.

We would like to point out that “non-genuine” parts and accessories have NOT been examined and released by the Company. The installation and or use of such products could have negative effects upon the design characteristics of your machine and thereby affect its safety. The company is not liable for any damage caused by the use of “non-genuine” parts and accessories.

IMPROVEMENTS

We are continually striving to improve our products. We reserve the right to make improvements or changes when it becomes practical and possible to do so, without incurring any obligation to make changes or additions to the equipment sold previously.

MODEL CODES

The range of machines listed may not be available in all countries or markets therefore, for the latest information consult your local dealer.

OWNER ASSISTANCE

We want you to be completely satisfied with your investment. Normally any problems with your equipment will be handled by your dealer's Service Department; however, misunderstandings can occur. If your problem has not been handled to your satisfaction, we suggest the following:

1. Contact the owner or General Manager of the dealership, explain the problem, and request assistance. When additional assistance is needed, your dealer has direct access to our office.
2. Provide your dealer with:
 - Your Name, Address, and Telephone number
 - Machine Model and Serial Number
 - Dealership Name and Address
 - Machine purchase date and amount of use
 - Nature of problem

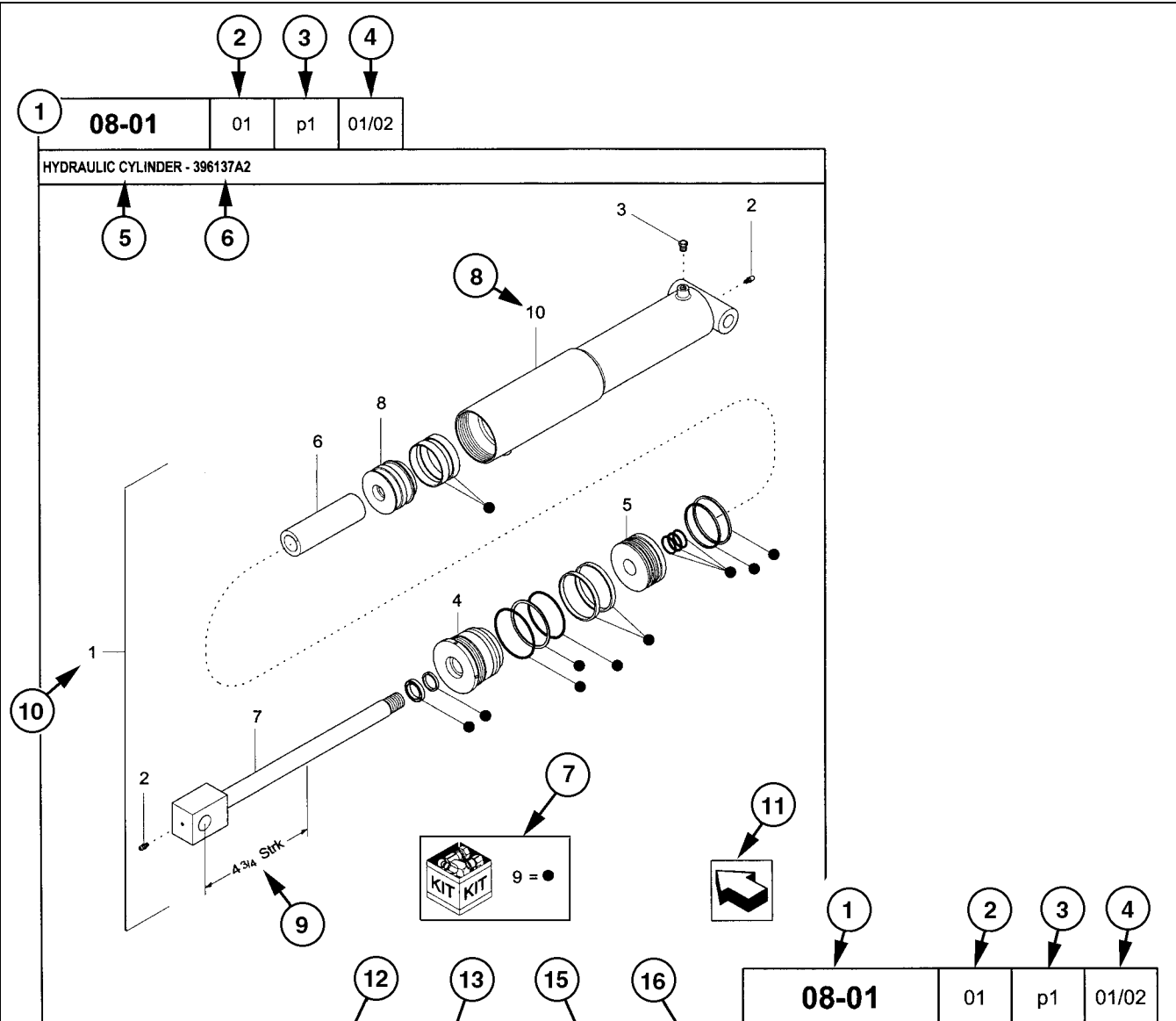
Be aware that your problem will likely be resolved in the dealership using the dealer's facilities, equipment, and personnel. So it is important that your initial contact be with the dealer.

SPARE PARTS

To maintain operating efficiency, use original spare parts.

When ordering parts, give the following information:

- Machine Model
- Machine and Engine Serial Numbers
- Part Number from the Parts Catalog



REF	FN	PART NUMBER	YR/SN	QTY	DESCRIPTION
1	1	396137A2	BTW 01/85 & 02/02	1	CYLINDER ASSY. 4-3/4 in strk, Inc 2-10
2		31-95	Before 01/85	2	FITTING
2		219-8	From 01/85	2	NIPPLE, LUBE Grease, 1/4 tpr x 17/32
3		{402475A2}		1	BREATHER
4		402474A1		1	CAP CYLINDER END
5		402468A1	BSN JJC0189199	1	PISTON ROD/GLAND
5		145221C3	ASN JJC0189200	1	PISTON
6		402471A1		1	SPACER
7		402473A1		1	ROD, PISTON
8		402469A1		1	PISTON ROD/GLAND
9		402476A1		1	PACKAGE, SEALS
10		NSS		1	NOT SERVICED SEPARAT CASE ASSEMBLY
(1)	08-20				
		STANDARD			
		MODELS			

HOW TO USE YOUR PARTS CATALOG

1. Figure Number
2. Sequence Code within the Figure Number
3. Page Number within the Sequence Code
4. Date of Printing (month / year)
5. Figure Description
6. General information regarding the figure
7. Parts supplied in repair kits per symbol reference
8. Figure call-out of the part number (REF)
9. Technical specifications relating to the part indicated
10. Figure call-out includes bracketed items, the included items may also be listed in the additional description area
11. Orientation - Arrow indicates front of the machine
12. Footnote - Additional information relating to the part number. In this example, 08-20 equals another figure that this part is shown on
13. Part Number
 - NSS = Not Serviced Separately (Non-serviced parts)
 - Bracketed numbers = not available as service parts in this market
14. Not Available as service part in this market
15. YR/SN
 - Year
 - Before 01/85 = Part valid for production January 1985 and before
 - From 01/85 = Part valid for production from January 1985 and after
 - BTW 01/85 & 02/02 = Part valid for machines produced between January 1985 and February 2002.
 - Serial Number (P.I.N.)
 - BSN JJC0268800 = Part valid for serial number JJC0268800 and below
 - ASN JJC0268800 = Part valid for serial number JJC0268800 and above
 - BTW JJC0178000 & JJC0179000 = Part valid for serial numbers between JJC0178000 & JJC0179000
16. Total Quantity of the Part referred to in the page. The quantity can be replaced by the following indications:
 - AR = As Required
 - X = As required
17. Part Description
18. Additional description of the part to help confirm identification
19. Figure Notes
20. Model Number(s)

RIGHT-HAND AND LEFT-HAND

The reference to right-hand and left-hand in this catalog is identified by the operator standing at the rear of the basic unit (without rear attachment), looking toward the front of the machine (in normal forward travel).

For pages covering any machine attachments, right-hand and left-hand are defined by the operator sitting in the position for proper operation of the attachment.

DIMENSIONS

Metric and U.S. hardware dimensions do not show the numeric designations of standard coarse threads. A number following a semi colon (;) is the class or grade of hardware. A comma (,) represents the decimal point (.) used in U.S. dimensions.

EXPLANATION OF ABBREVIATIONS

AC	Alternating Current
adj	adjustable
amp	ampere
AR	As required
ASN	Serial number and after P.I.N. and after
blkhd	bulkhead
br	branch
BSN	before Serial number before P.I.N.
BTW	between
cc	cubic centimetre
cl	class
cmprsn	compression
cn pt	cone point
cp pt	cup point
CRS	Chrome Alloy Steel
CST	Carbon Steel
cu yd	cubic yard
DC	Direct Current
deg	degree
dg pt	dog point
dia	diameter
dr type	drive type
fc	face
fc sl	face seal
fem	female
fem PT	female pipe thread
fl	flare
flat pt	flat point
ft	feet or foot
ga	gauge
gal	gallon or gallons
gpm	gallons per minute
gr	grade
hd	head
hdg pt	half dog point
hp	horsepower
ID	inside diameter
in	inch or inches
Incl.	Includes
inv fl	inverted flare
K	kilo
kg	kilogram
km/h	kilometers per hour

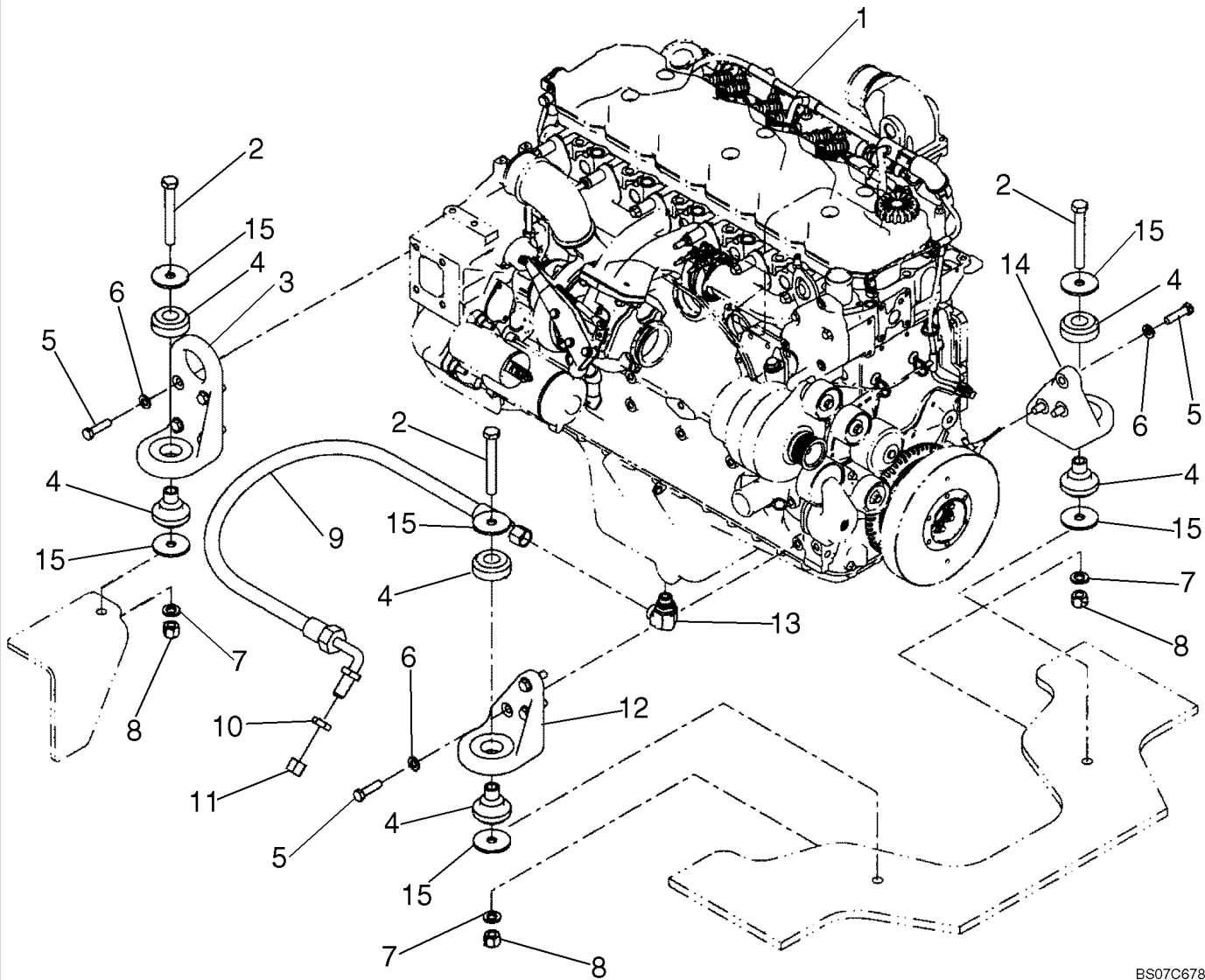
L	litre
lb	pounds
lb-ft	pound-foot
lg	long
LH	left-hand
LH thd	left-hand thread
M	(prefix) metric thread size
m	metre
ml	milliliter
mm	millimetre
NF	National Fine
No.	number
NPT	National Pipe Thread
NS	National Super Fine
OD	outside diameter
ohm	electrical unit of resistance
Or	O-ring
ORB	O-ring boss
ORFS	O-ring face seal
ov cntr	over center
ov pt	oval point
oz	ounce
P	pitch
psi	pounds per square inch
pt	pint
PT	pipe thread
rd	round
rd holes	round holes
RH	right-hand
RH thd	right-hand thread
rpm	revolutions per minute
sl	self-locking
sq	square
SST	Stainless Steel
st	self-tapping
strk	stroke
sw	swivel
T	teeth
thk	thick
tpr	taper
tube OD	tube outside diameter
V	volt or volts
W	watt or watts
X	as required
yd	yard

SECTION INDEX

Engine

02-01	MOUNTING, ENGINE
02-02	RADIATOR - HOSES AND TUBES
02-03	COOLER, CHARGE AIR
02-04	COOLER, CHARGE AIR - HOSES AND TUBES
02-05	FAN DRIVE
02-06	AIR CLEANER - AIR INTAKE PARTS
02-06A	AIR CLEANER ASSY
02-07	AIR CLEANER ASSY - PRECLEANER ASSY
02-08	MUFFLER - EXHAUST SYSTEM
02-09	OIL FILL, ENGINE
02-10	OIL PUMP - ENGINE
02-11	OIL FILTER - ENGINE
02-12	OIL FILTER AND COOLER
02-13	OIL PUMP, PAN
02-14	OIL PUMP, PAN - DRAIN LINE - COVER
02-15	BREATHER - ENGINE
02-16	TURBOCHARGER - DRAIN LINE
02-17	TURBOCHARGER
02-18	WATER PUMP
02-19	WATER PUMP - TENSIONER ASSY
02-20	CYLINDER BLOCK
02-21	CYLINDER BLOCK - PLUG ASSY
02-22	CYLINDER BLOCK - NOISE CONTROL
02-23	CYLINDER HEAD
02-24	CYLINDER HEAD - ASSEMBLY
02-25	CYLINDER HEAD - COVERS
02-26	CRANKSHAFT
02-27	CRANKSHAFT - PULLEY
02-28	FLYWHEEL - ENGINE
02-29	FLYWHEEL HOUSING
02-30	GEAR COVER - REAR HOUSING
02-31	GEAR COVER - PLATE
02-32	FRONT GEAR COVER
02-33	ROCKER ARMS
02-33A	ROCKER ARMS - ASSEMBLY
02-34	CAMSHAFT
02-35	PISTONS
02-36	CONNECTING ROD
02-37	INTAKE MANIFOLD
02-38	EXHAUST MANIFOLD
02-39	COOLING SYSTEM - ENGINE
02-40	THERMOSTAT - ENGINE COOLING SYSTEM
02-41	ENGINE - LIFT HOOKS
02-42	ENGINE - BLOCK HEATER

MOUNTING, ENGINE

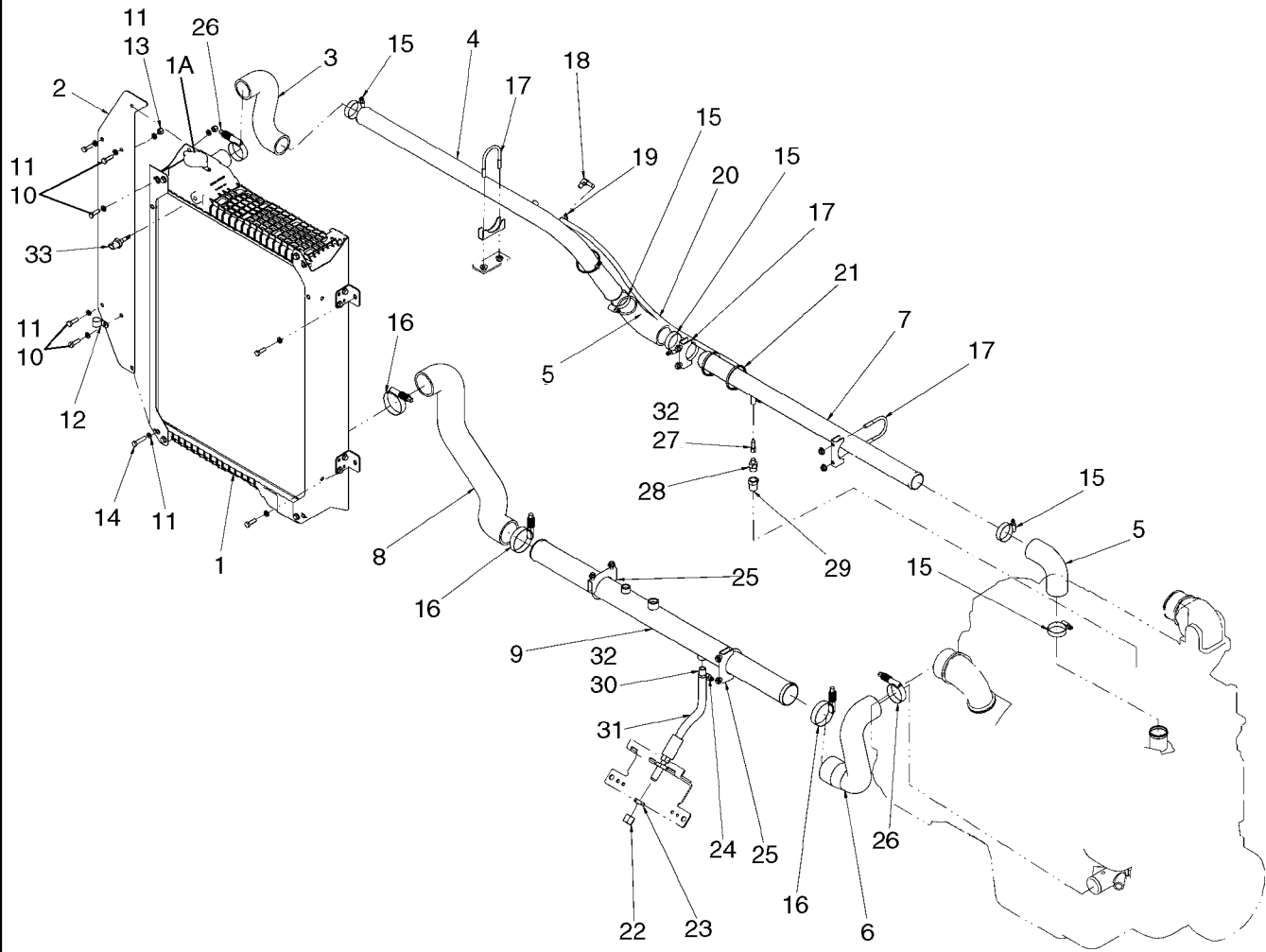


MOUNTING, ENGINE

REF	FN	PART NUMBER	YR/SN	QTY	DESCRIPTION
1		87579400		1	ENGINE, 6 Cylinder 6.7L Turbo, Tier III; See Figures 02-09 - 02-13, 02-15 - 02-41, 03-05 - 03-11
2		827-16120		4	BOLT, Hex, M16 x 120, 10.9
3		8602302		2	MOUNT, ENGINE, Flywheel Housing
4		361811A1		4	ISOLATOR
5		627-12045		14	BOLT, Hex, M12 x 45, 10.9, Full Thd
6		896-11012		14	WASHER, M13.5 x 24.5 x 3, HT
7		896-11016		4	WASHER, M17.5 x 30 x 4, HT
8		832-10416		4	NUT, LOCK, M16 x 2, CI 8
9		397437A1		1	HOSE ASSY.
10		218-1251		1	NUT, LOCK, Blkhd, 7/8"-14
11		218-756		1	CAP, 37°, 7/8"-14
12		8602304		1	MOUNT, ENGINE, Rear Left
13		87426452		1	FITTING
14		8602303		1	MOUNT, ENGINE, Rear Right
15		496-81025		8	WASHER, 21/32" x 2 1/2" x .188", HDN

621E

RADIATOR - HOSES AND TUBES

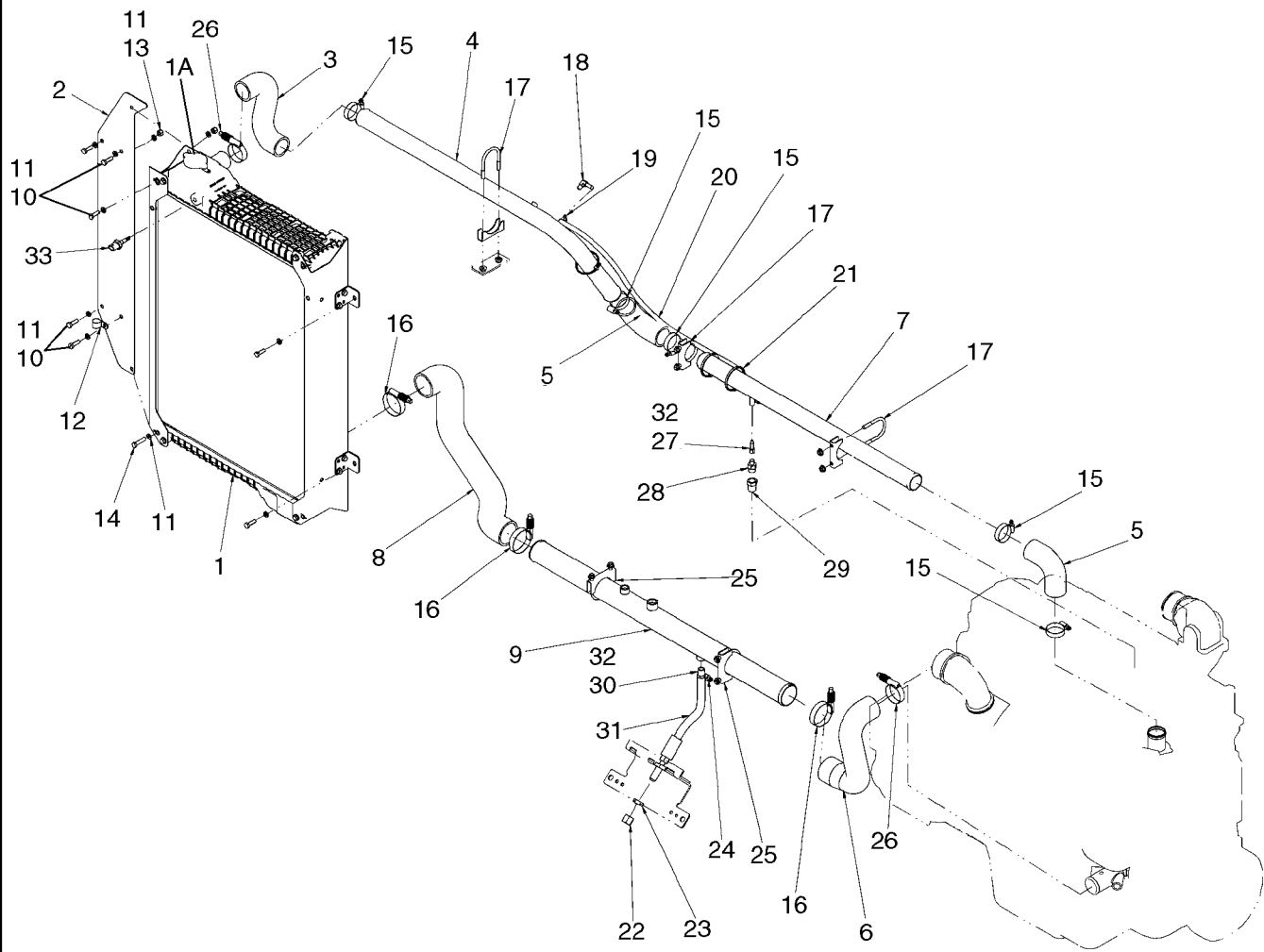


RADIATOR - HOSES AND TUBES

REF	FN	PART NUMBER	YR/SN	QTY	DESCRIPTION
1		8602421		1	RADIATOR, Incl. Ref. 1A
1A		A170241		1	CAP, RADIATOR
2		87324042		1	PLATE, Radiator
3		8500083		1	HOSE, Radiator Top
4		87552495		1	TUBE, Top Coolant
5		381232A1		2	HOSE, Elbow
6		8500084		1	HOSE, Engine Bottom
7		87446950		1	TUBE, Top Coolant
8		87552485		1	HOSE, Radiator Bottom
9		87325208		1	TUBE, Bottom Coolant
10		627-8025		7	BOLT, Hex, M8 x 25, 10.9
11		892-11008		12	WASHER, LOCK, M8
12		515-22190		4	CLAMP, 3/4", Insul, 5/16" Bolt
13		832-10408		4	NUT, LOCK, M8 x 1.25, Cl 8
14		627-8035		1	BOLT, Hex, M8 x 35, 10.9
15		214-1436		5	CLAMP, HOSE, #36, 1.81/2.75 Type F Worm
16		L115548		3	CLAMP
17		382189A1		3	CLAMP
18		217-292		1	FITTING, 90°, 1/4" Hose x 1/8" NPTF, Barbed
19		214-1704		2	CLAMP, HOSE, #4, 0.25/0.62 Type M Worm
20		87552499		1	HOSE, Coolant Breather, 885 mm (33 - 1/2 in)
21		L11541		3	STRAP
22		218-755		1	CAP, 37°, 3/4"-16
23		218-1255		1	NUT, LOCK, Blkhd, 3/4"-16
24		214-1410		1	CLAMP, HOSE, #10, 0.56/1.06 Type F Worm
25		393632A1		2	CLAMP
26		254026A1		2	CLAMP
27		217-191		1	FITTING, 1/4" Hose x 1/8" NPTF, Fem, Barbed
28		J911901		1	VALVE, CHECK
29		217-1035		1	REDUCER, 1/2"-14 Male NPTF x 3/8"-18 Female NPTF
30		217-152		1	FITTING, 1/2" Hose X 3/8" NPTF Beaded
31		87536091		1	HOSE ASSY., Remote Coolant Drain, 330 mm (13 in)
32		345-87		AR	LOCTITE

621E

RADIATOR - HOSES AND TUBES

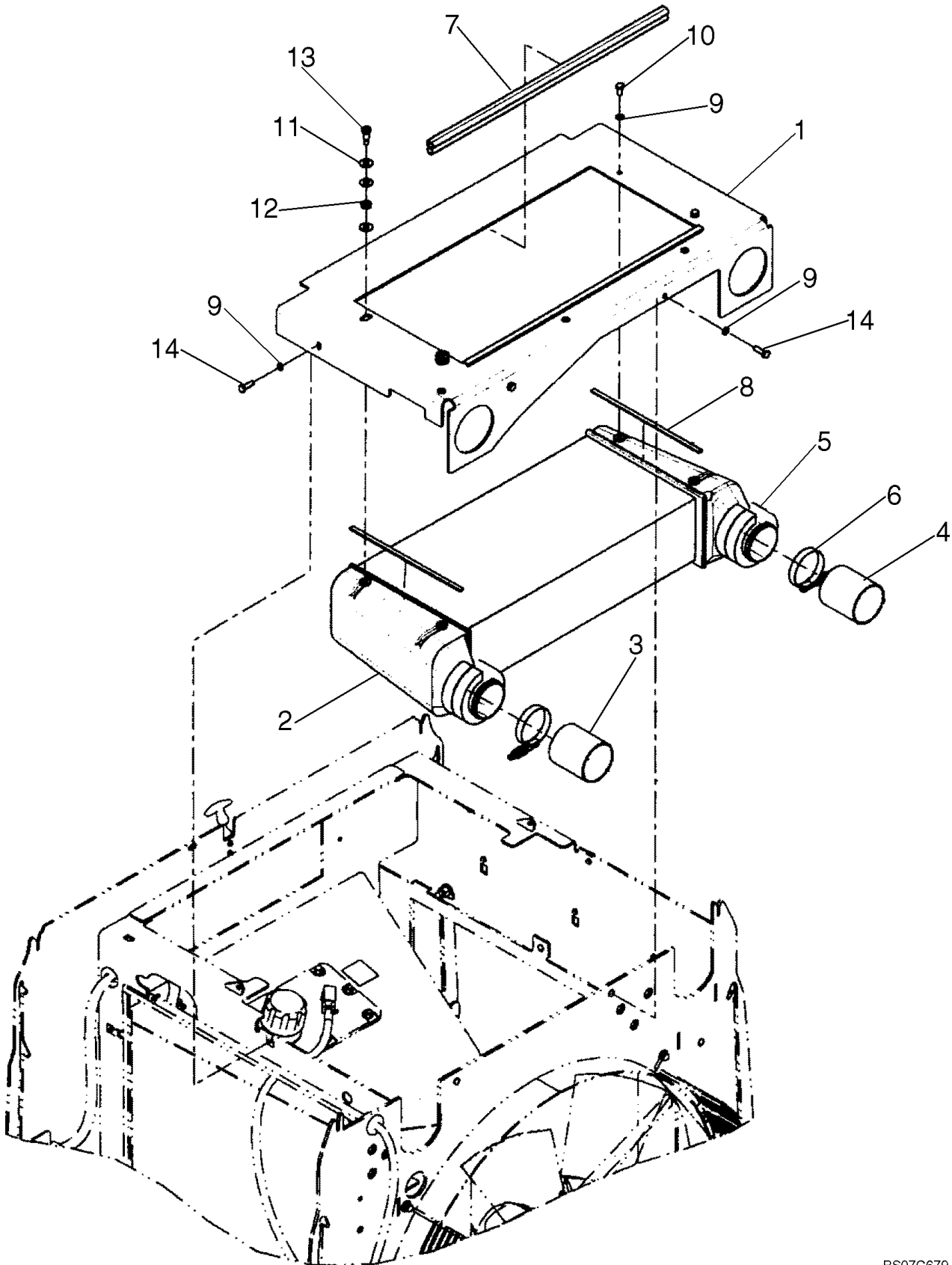


RADIATOR - HOSES AND TUBES

REF	FN	PART NUMBER	YR/SN	QTY	DESCRIPTION
33		419792A2		1	SENSOR, Coolant Level

621E

COOLER, CHARGE AIR

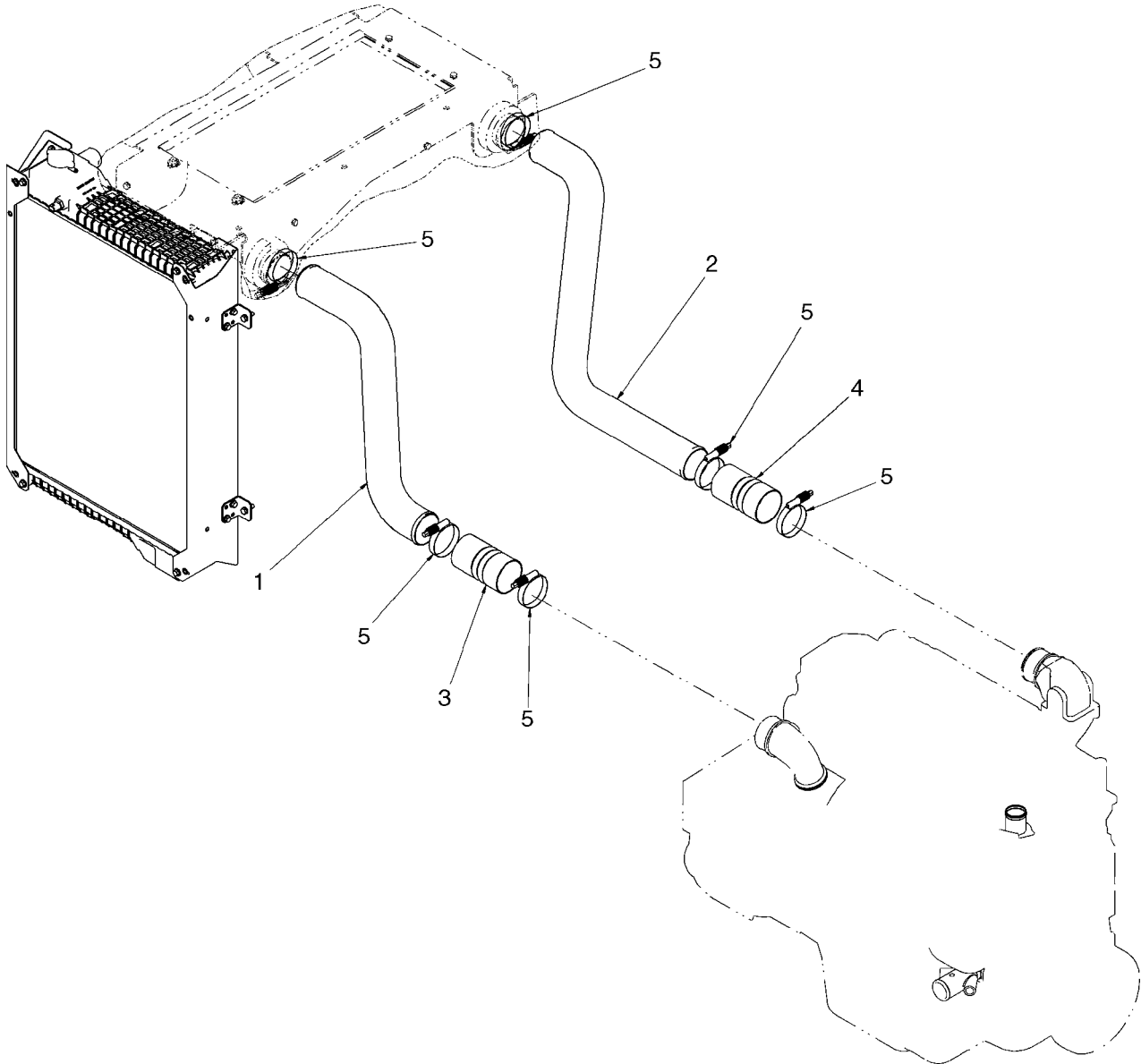


COOLER, CHARGE AIR

REF	FN	PART NUMBER	YR/SN	QTY	DESCRIPTION
1		87381953		1	PLATE ASSY., Charge Air
2		347613A1		1	COOLER, Charge Air
3		{87572375}		1	HOSE, Air Intake
4		{87572378}		1	HOSE, Air Intake
5		8500167		2	SEAL
6		L115549		2	CLAMP
7		8500144		2	SEAL
8		8500143		2	SEAL, Foam
9		892-11008		6	WASHER, LOCK, M8
10		627-8016		2	BOLT, Hex, M8 x 16, 10.9
11		895-15010		6	WASHER, M11 x 24 x 2
12		386040R1		2	SPRING
13		561-703		2	SCREW, Hex Soc, Shoulder, M8 10 X 16mm, Cl 12.9
14		627-8025		4	BOLT, Hex, M8 x 25, 10.9

621E

COOLER, CHARGE AIR - HOSES AND TUBES

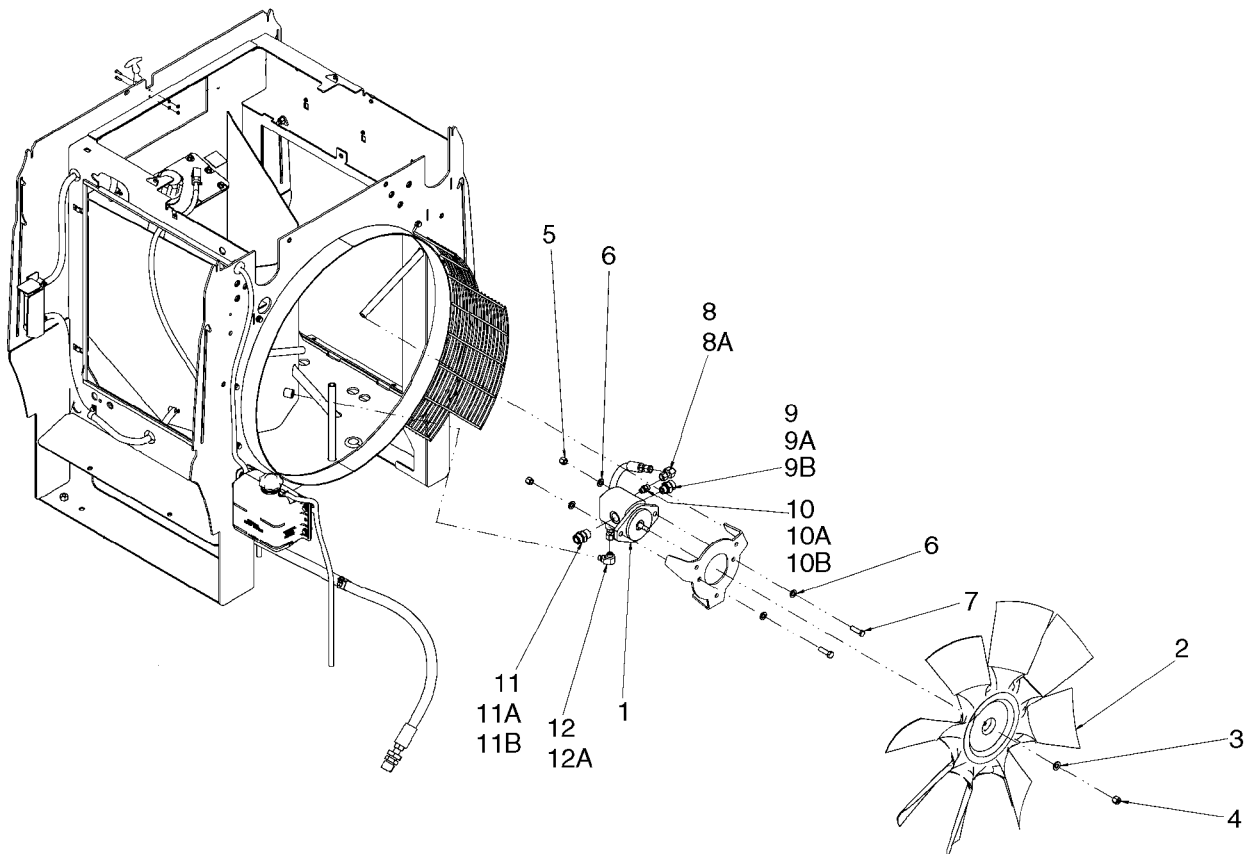


COOLER, CHARGE AIR - HOSES AND TUBES

REF	FN	PART NUMBER	YR/SN	QTY	DESCRIPTION
1		87552496		1	TUBE, Charge Air - Turbo
2		87644742		1	TUBE, AIR INTAKE, Charge Air - Intake
3		87340284		1	HOSE, Charge Air, 76X140 mm
4		87340015		1	HOSE, Air Intake, 76X140 mm
5		L115549		6	CLAMP

621E

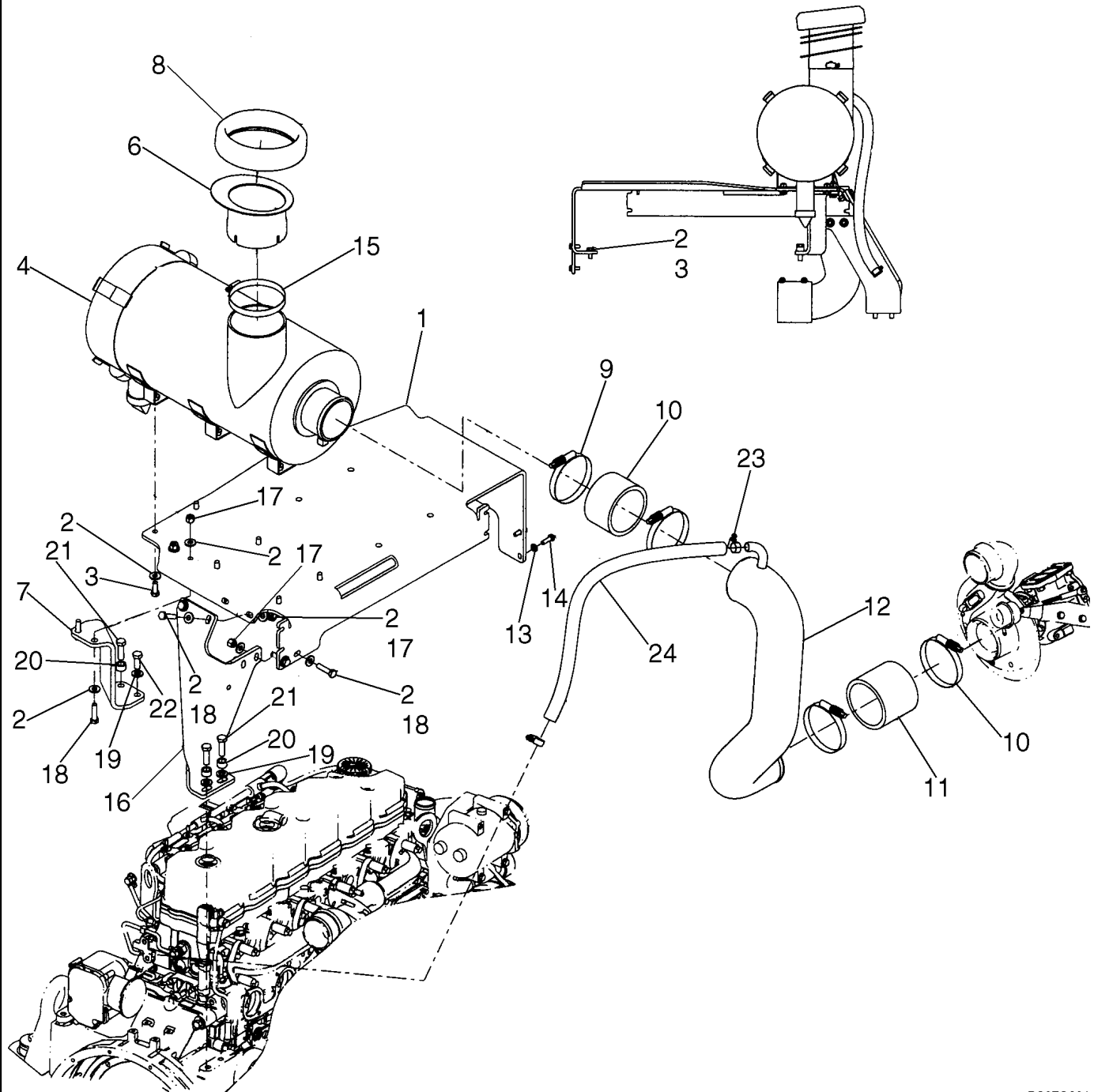
FAN DRIVE



FAN DRIVE

REF	FN	PART NUMBER	YR/SN	QTY	DESCRIPTION
		REF			INSTRUCTION, FAN DRIVE MOUNTING, FOR HYDRAULICS AND FAN VALVES SEE FIGURES 08-22 - 08-24A
1		8500105		1	MOTOR, HYDRAULIC, Reversible Fan; Incl. 1A
1A		86991683		1	KIT, Seals, For Fan Drive Motor; Not Illustrated
2		8500471		1	FAN
3		496-21053		1	WASHER, 17/32" x 1 1/6" x .134"
4		232-2448		1	NUT, LOCK, 1/2"-20, GC
5		832-10412		2	NUT, LOCK, M12 x 1.75, CI 8
6		896-11012		4	WASHER, M13.5 x 24.5 x 3, HT
7		627-12040		2	BOLT, Hex, M12 x 40, 10.9, Full Thd
8		84989392		1	ELBOW, 90°, 11/16"-16 ORFS x 11/16"-16 Fem Sw, Incl. Ref. 8A
8A		9993141		1	O-RING, -012, 90 Duro, .364" ID x .070" Thk
9		86579681		1	CONNECTOR, HYD., 1 3/16"-12 ORFS x M22 x 1.5 ORB, Incl. Refs. 9A, 9B
9A		238-6018		1	O-RING, -018, 90 Duro, .739" ID x .070" Thk, Face Seal
9B		637-63193		1	O-RING, CI 6, 19.3MM ID x 2.2 Thk, Boss Seal
10		86579671		1	CONNECTOR, HYD., 11/16"-16 ORFS x M14 x 1.5 ORB
10A		238-6012		1	O-RING, -012, 90 Duro, .364" ID x .070" Thk, Face Seal
10B		637-63113		1	O-RING, CI 6, 11.3MM ID x 2.2 Thk, Boss Seal
11		86579682		1	CONNECTOR, HYD., 1 3/16"-12 ORFS x M27 x 2 ORB, Incl. Refs. 11A, 11B
11A		238-6018		1	O-RING, -018, 90 Duro, .739" ID x .070" Thk, Face Seal
11B		637-64236		1	O-RING, CI 6, 23.6MM ID x 2.9 Thk, Boss Seal
12		86579686		1	ELBOW, 90°, 11/16"-18 ORFS x M14 x 1.5 ORB, Incl. Ref. 12A
12A		238-6012		1	O-RING, -012, 90 Duro, .364" ID x .070" Thk, Face Seal
					621E

AIR CLEANER - AIR INTAKE PARTS

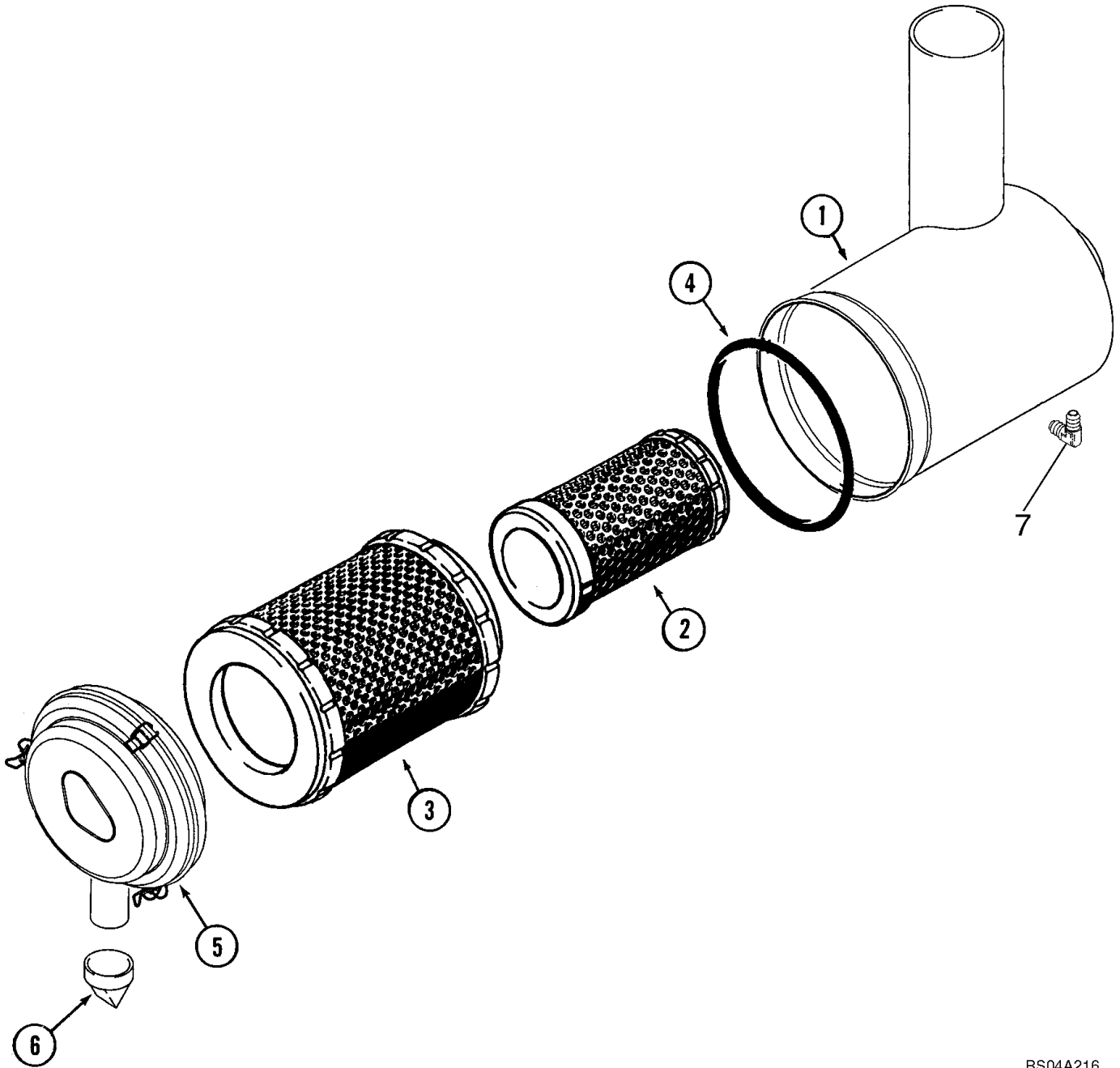


AIR CLEANER - AIR INTAKE PARTS

REF	FN	PART NUMBER	YR/SN	QTY	DESCRIPTION
1		87535471		1	SUPPORT, Air Cleaner
2		896-15010		20	WASHER, M10 x 24.5 x 3, HT
3		627-10025		8	BOLT, Hex, M10 x 25, 10.9, Full Thd
4		87590238		1	AIR CLEANER, See Figure 02-06A
6		87557216		1	TUBE, Under Hood Intake
7		87535473		1	SUPPORT, Air Cleaner
8		8500403		1	SEAL
9		8501205		1	HOSE, 73 mm (2 7/8 in); Air Cleaner
10		L127771		4	CLAMP
11		8602478		1	HOSE, 100 mm (4 in); Air Cleaner
12		8602473		1	TUBE, Air Cleaner Intake
13		896-11008		2	WASHER, M8 x 17.5 x 2, HT
14		627-8025		2	BOLT, Hex, M8 x 25, 10.9
15		214-3188		1	CLAMP, HOSE, 4.75/6.625 HD Worm
16		87535472		1	SUPPORT, Left
17		832-10410		6	NUT, LOCK, M10 x 1.5, Cl 8
18		627-10040		6	BOLT, Hex, M10 x 40, 10.9, Full Thd
19		896-11012		3	WASHER, M13.5 x 24.5 x 3, HT
20		D44696		2	BUSHING, 1/2 Pipe x 1/2
21		627-12040		3	BOLT, Hex, M12 x 40, 10.9, Full Thd
22		627-12030		1	BOLT, Hex, M12 x 30, 10.9
23		214-1416		2	CLAMP, HOSE, #16, 0.81/1.50 Type F Worm
24		87342638		1	HOSE, 800 mm (31-1/2in); Crankcase Ventilation

621E

AIR CLEANER ASSY

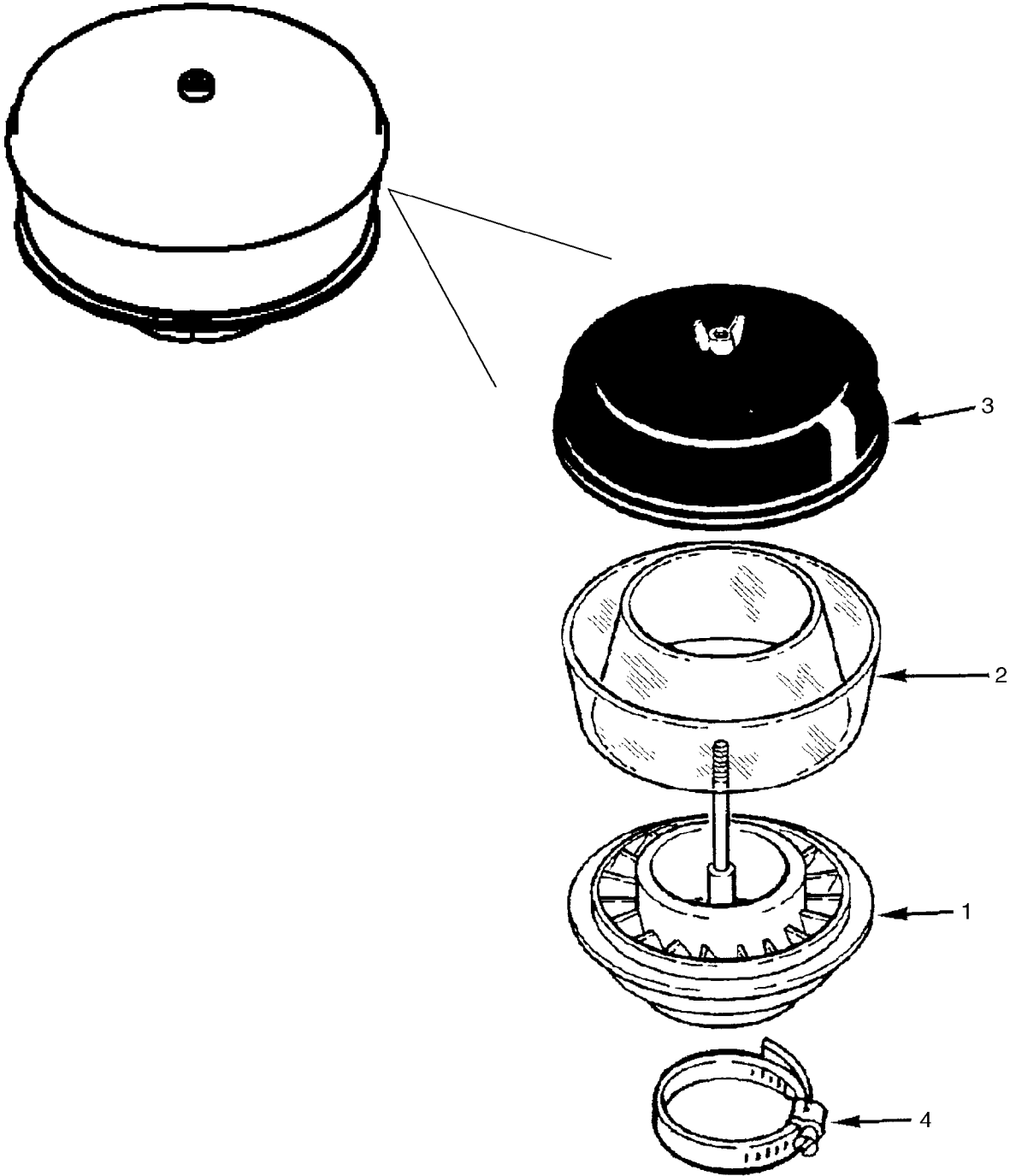


AIR CLEANER ASSY

REF	FN	PART NUMBER	YR/SN	QTY	DESCRIPTION
		87590238		1	AIR CLEANER, Incl. Refs. 1 - 7
1		NSS		1	NOT SERVICED SEPARATELY, Body
2		8605140		1	FILTER, AIR, Secondary
3		8605139		1	FILTER, AIR, Primary
4		8605078		1	O-RING
5		8605079		1	COVER
6		8604231		1	VALVE
7		217-1227		1	ELBOW, 90°, 1/8"-27 Male

621E

AIR CLEANER ASSY - PRECLEANER ASSY

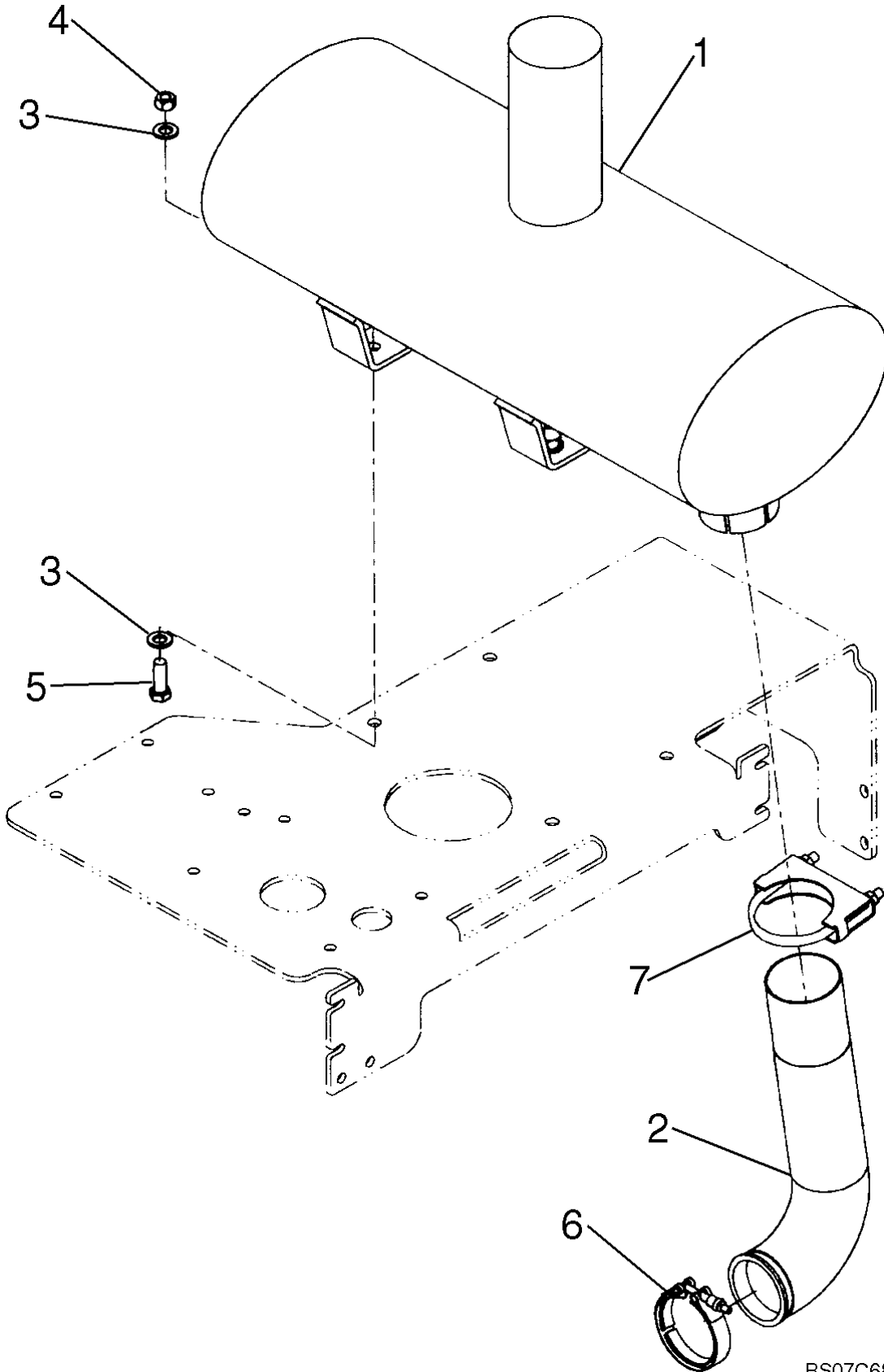


AIR CLEANER ASSY - PRECLEANER ASSY

REF	FN	PART NUMBER	YR/SN	QTY	DESCRIPTION
		REF			INSTRUCTION, PRECLEANER COMPONENT PARTS
		258541A1		1	PRECLEANER, Incl. Refs. 1 - 4
1		NSS		1	NOT SERVICED SEPARATELY, Base
2		L30671		1	HOUSING
3		L30669		1	COVER
4		214-1480		1	CLAMP, HOSE, #80, 4.62/5.50 Type F Worm

621E

MUFFLER - EXHAUST SYSTEM

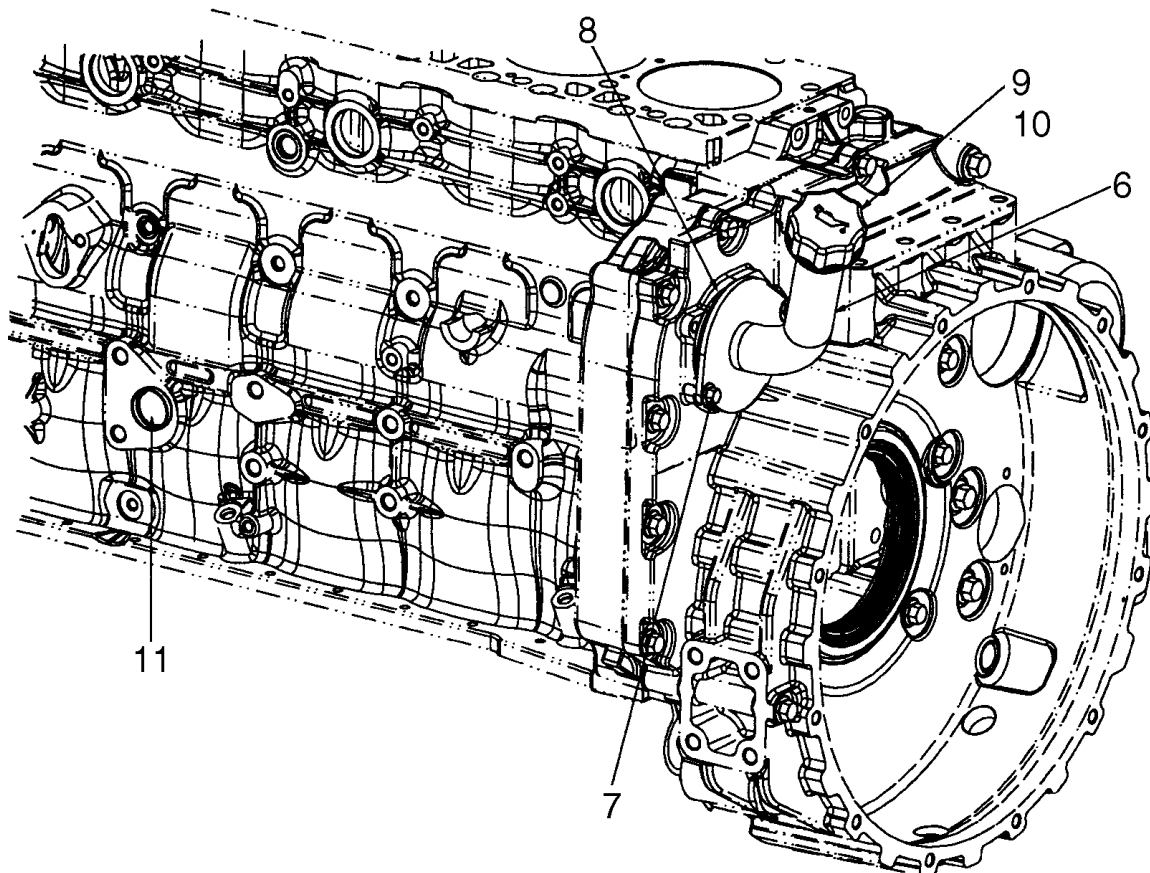
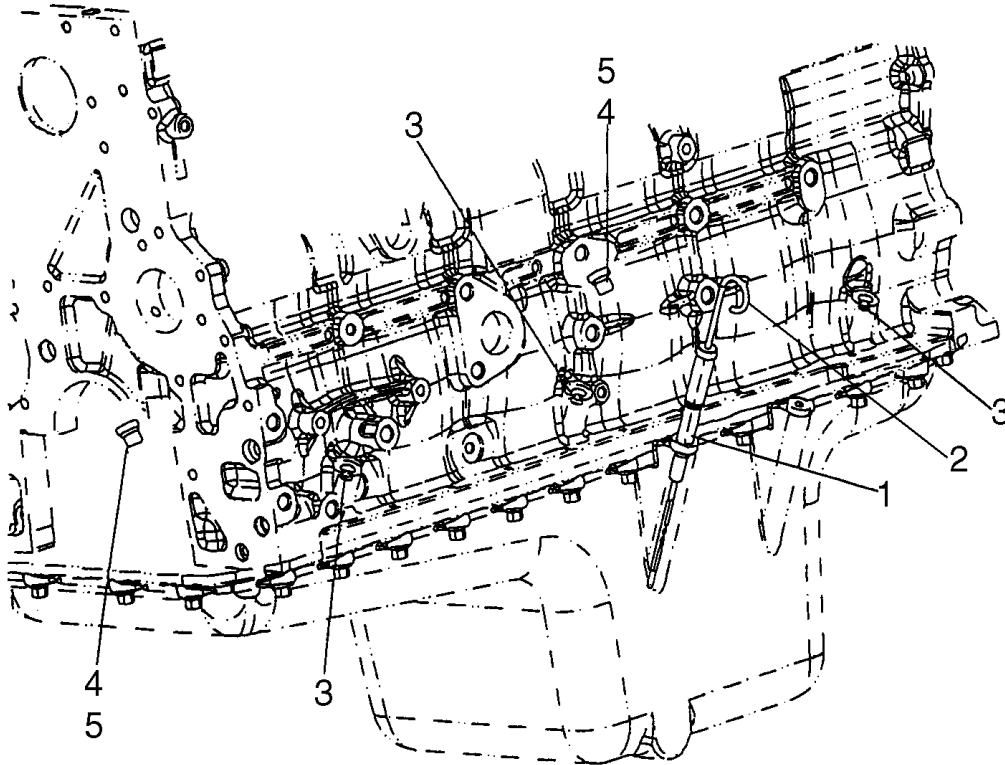


MUFFLER - EXHAUST SYSTEM

REF	FN	PART NUMBER	YR/SN	QTY	DESCRIPTION
1		87365731		1	MUFFLER
2		87365709		1	TUBE, Exhaust
3		896-11012		8	WASHER, M13.5 x 24.5 x 3, HT
4		829-1412		4	NUT, M12, CI 10
5		627-12035		4	BOLT, Hex, M12 x 35, 10.9
6		J903652		1	CLAMP
7		299456A1		1	COLLAR CLAMP

621E

OIL FILL, ENGINE

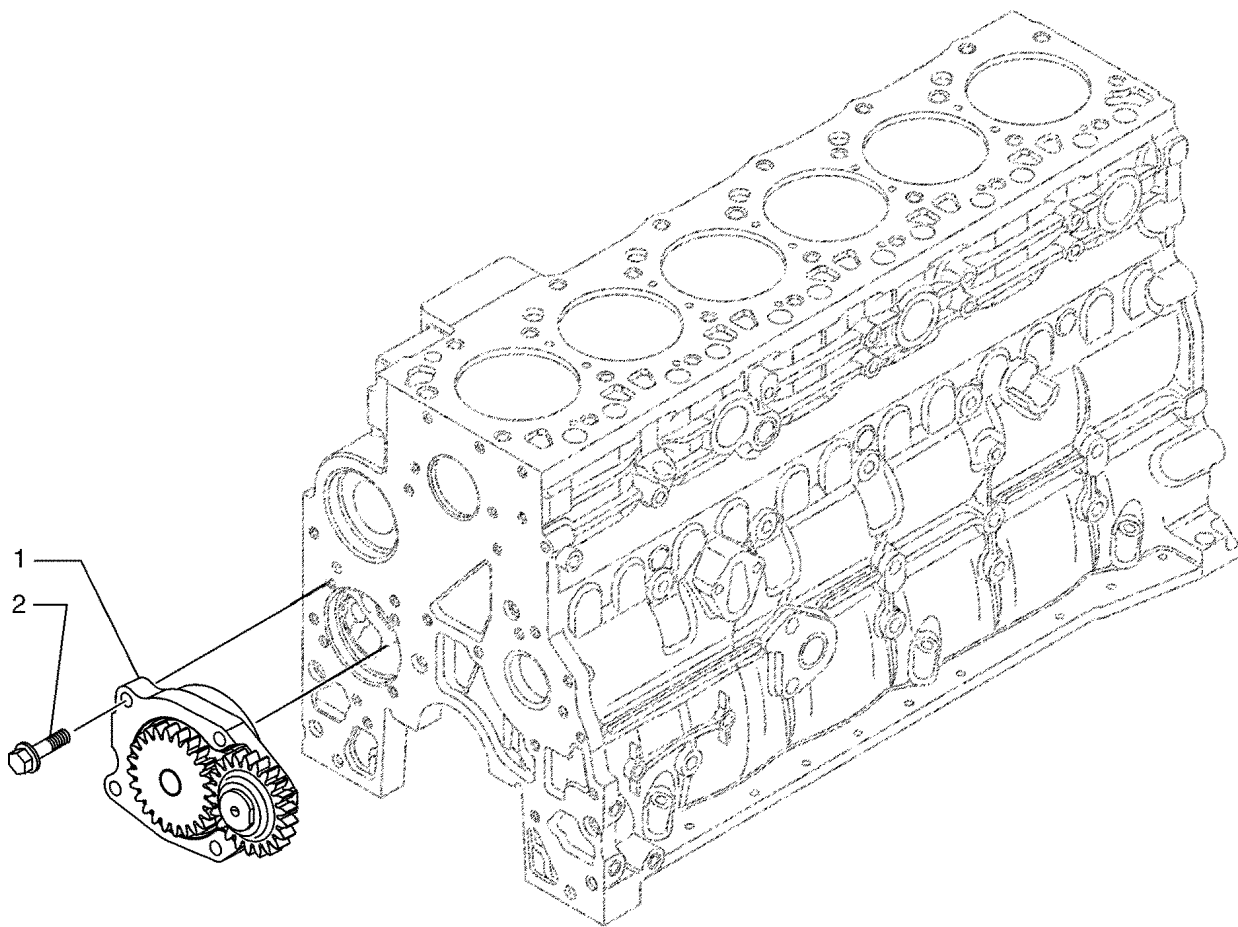


OIL FILL, ENGINE

REF	FN	PART NUMBER	YR/SN	QTY	DESCRIPTION
		87579400		1	ENGINE, 6 Cylinder 6.7L Turbo, Tier III; Includes Figures 02-09 - 02-13, 02-15 - 02-41, 03-05 - 03-11; Incl. Refs. 1 - 11
		2852463		1	DIPSTICK, ASSY. Incl. Refs. 1, 2
1		2852122		1	TUBE, RIGID
2		2852464		1	DIPSTICK
3		4899036		3	PLUG, Expansion
4		4897330		4	PLUG, ASSY. Incl. Ref. 5
5		4895610		1	O-RING
6		2856132		1	NECK FILLER
7		4899020		2	SCREW
8		2854075		1	O-RING
9		2853410		1	CAP, INTRODUCTION, ASSY. Incl. Ref. 10
10		2853412		1	O-RING
11		4895037		1	PLUG

621E

OIL PUMP - ENGINE

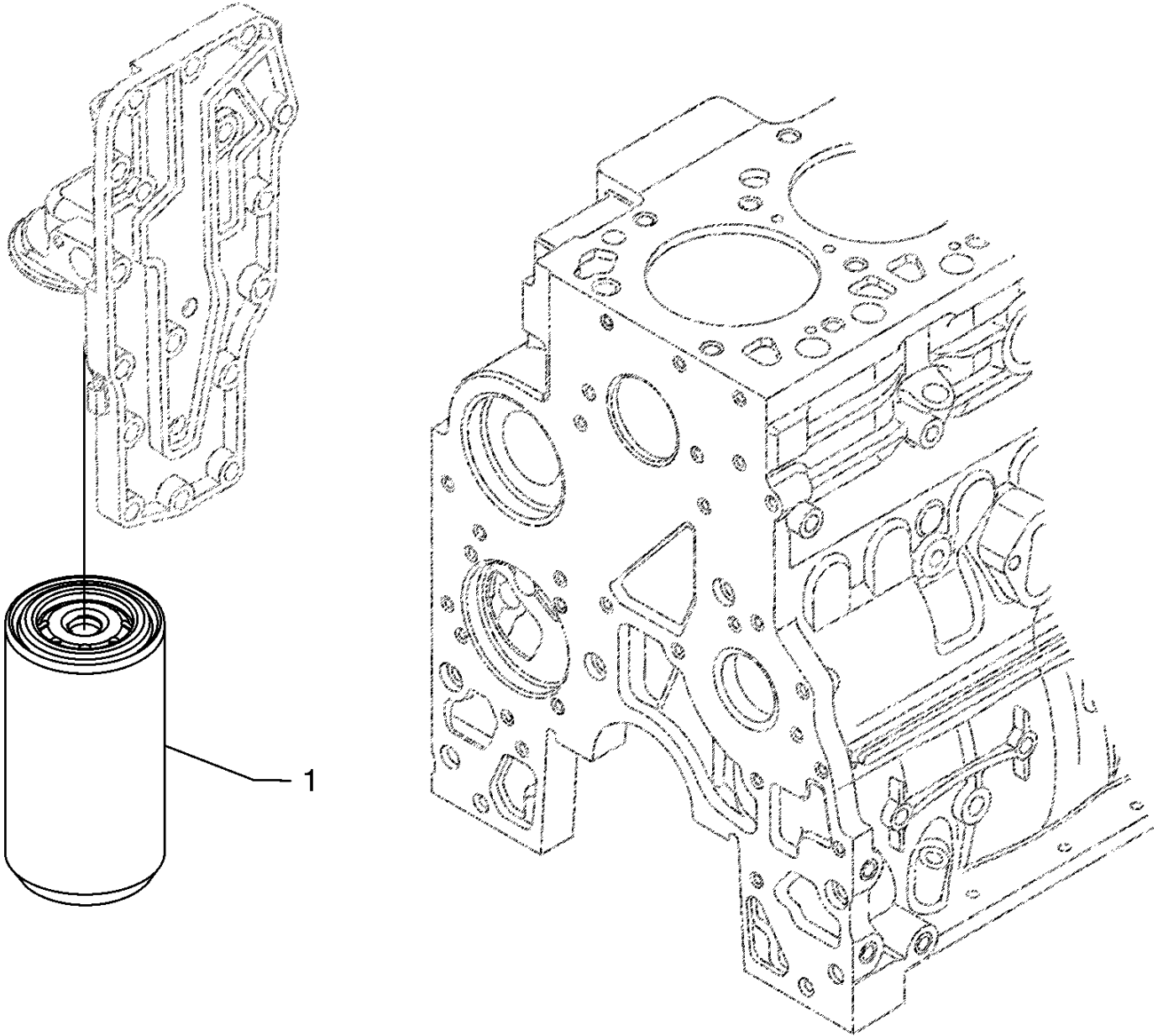


OIL PUMP - ENGINE

REF	FN	PART NUMBER	YR/SN	QTY	DESCRIPTION
		87579400		1	ENGINE, 6 Cylinder 6.7L Turbo, Tier III; Includes Figures 02-09 - 02-13, 02-15 - 02-41, 03-05 - 03-11; Incl. Refs. 1 - 2
1		4897481		1	PUMP, ENGINE OIL
1		2853591		1	PUMP, ENGINE OIL, In Alternative
2		4899090		4	SCREW, Hex Flg, M8 x 1.25 x 30

621E

OIL FILTER - ENGINE

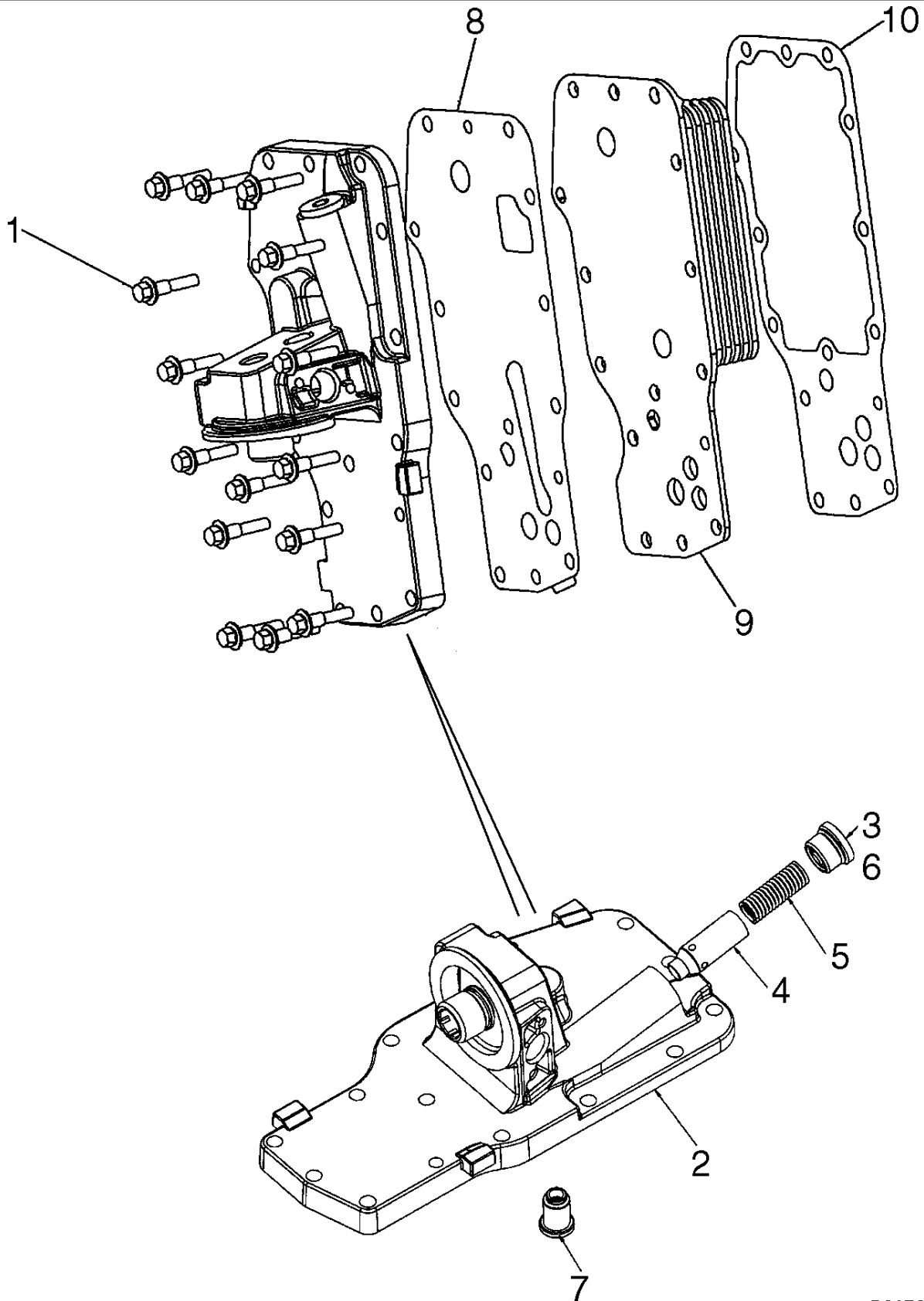


OIL FILTER - ENGINE

REF	FN	PART NUMBER	YR/SN	QTY	DESCRIPTION
		87579400		1	ENGINE, 6 Cylinder 6.7L Turbo, Tier III; Includes Figures 02-09 - 02-13, 02-15 - 02-41, 03-05 - 03-11; Incl. Ref. 1
1		87803261		1	FILTER, ENGINE OIL

	621E
--	-------------

OIL FILTER AND COOLER

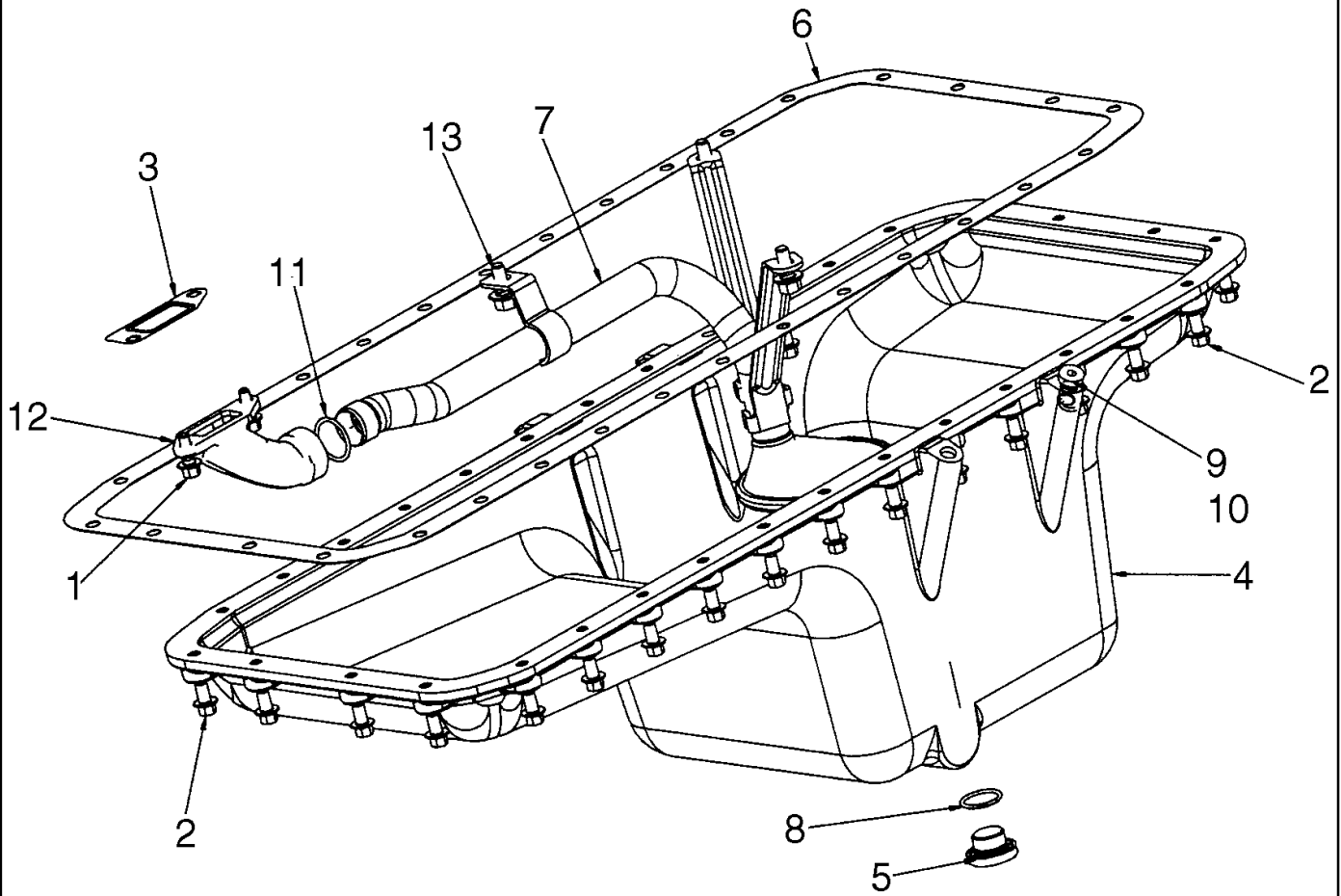


OIL FILTER AND COOLER

REF	FN	PART NUMBER	YR/SN	QTY	DESCRIPTION
		87579400		1	ENGINE, 6 Cylinder 6.7L Turbo, Tier III; Includes Figures 02-09 - 02-13, 02-15 - 02-41, 03-05 - 03-11; Incl. Refs. 1 - 10
1		4899019		15	SCREW, Hex Flg, M8 x 1.25 x 35
		2853780		1	HEAD, FILTER, Housing Assy. Incl. Refs. 2 - 7
2		4899566		1	HEAT EXCHANGER, Housing
3		2853781		1	PLUG, Incl. Ref. 6
4		4896404		1	PLUNGER, Pressure Reg.
5		4895045		1	SPRING
6		4899035		1	O-RING
7		4896410		1	VALVE, PRESSURE RELIEF
8		4896409		1	GASKET
9		4896407		1	RADIATOR
9		2853604		1	COOLER, OIL, In Alternative
10		2830559		1	GASKET

621E

OIL PUMP, PAN



OIL PUMP, PAN

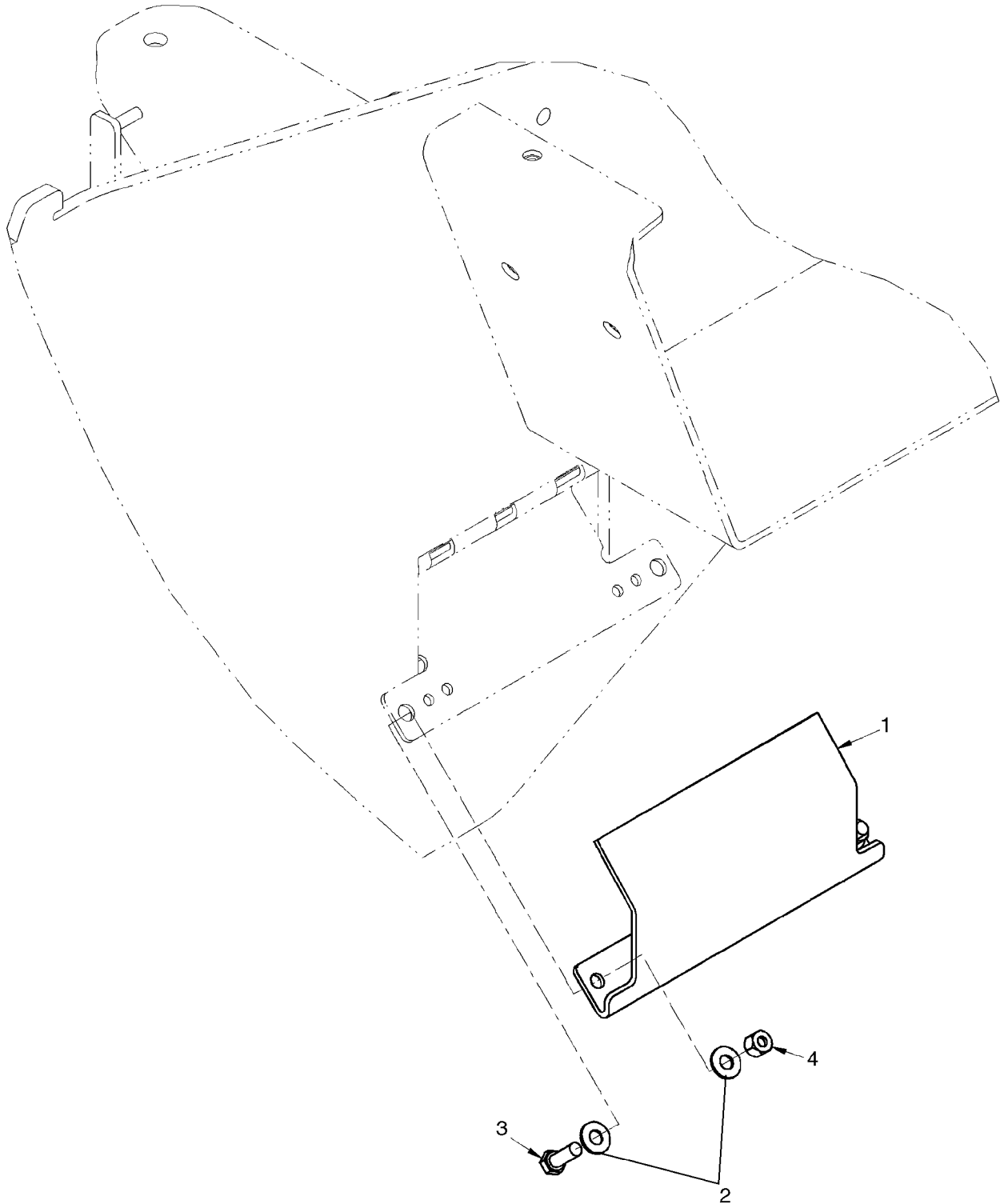
REF	FN	PART NUMBER	YR/SN	QTY	DESCRIPTION
		87579400		1	ENGINE, 6 Cylinder 6.7L Turbo, Tier III; Includes Figures 02-09 - 02-13, 02-15 - 02-41, 03-05 - 03-11; Incl. Refs. 1 - 13
1		4899020		2	SCREW, M8 x 1.25 x 20
2		4899019		32	SCREW, Hex Flg, M8 x 1.25 x 35
3		4898301		1	GASKET
4		2852419		1	PAN, ENGINE OIL
5		4894139		1	PLUG
6		2852420		1	GASKET
7		2852770		1	STRAINER, ELEMENT, PIPE, Oil Suction, Incl. Ref. 7A
7A		2852217		1	MESH, ASSY, Gasket And Gauze Oil Strainer, Not Illustrated
8		2853728		1	O-RING
9		4897330		1	PLUG
10		4895610		1	O-RING, 9.3 ID x 2.2
11		2852237		1	GASKET, 26.64 ID x 2.62
12		2852238		1	TUBE, RIGID
13		4895291		3	SCREW, Hex Flg, M10 x 1.5 x 20
					621E

02-14

p1

07/07

OIL PUMP, PAN - DRAIN LINE - COVER



02-14

p1

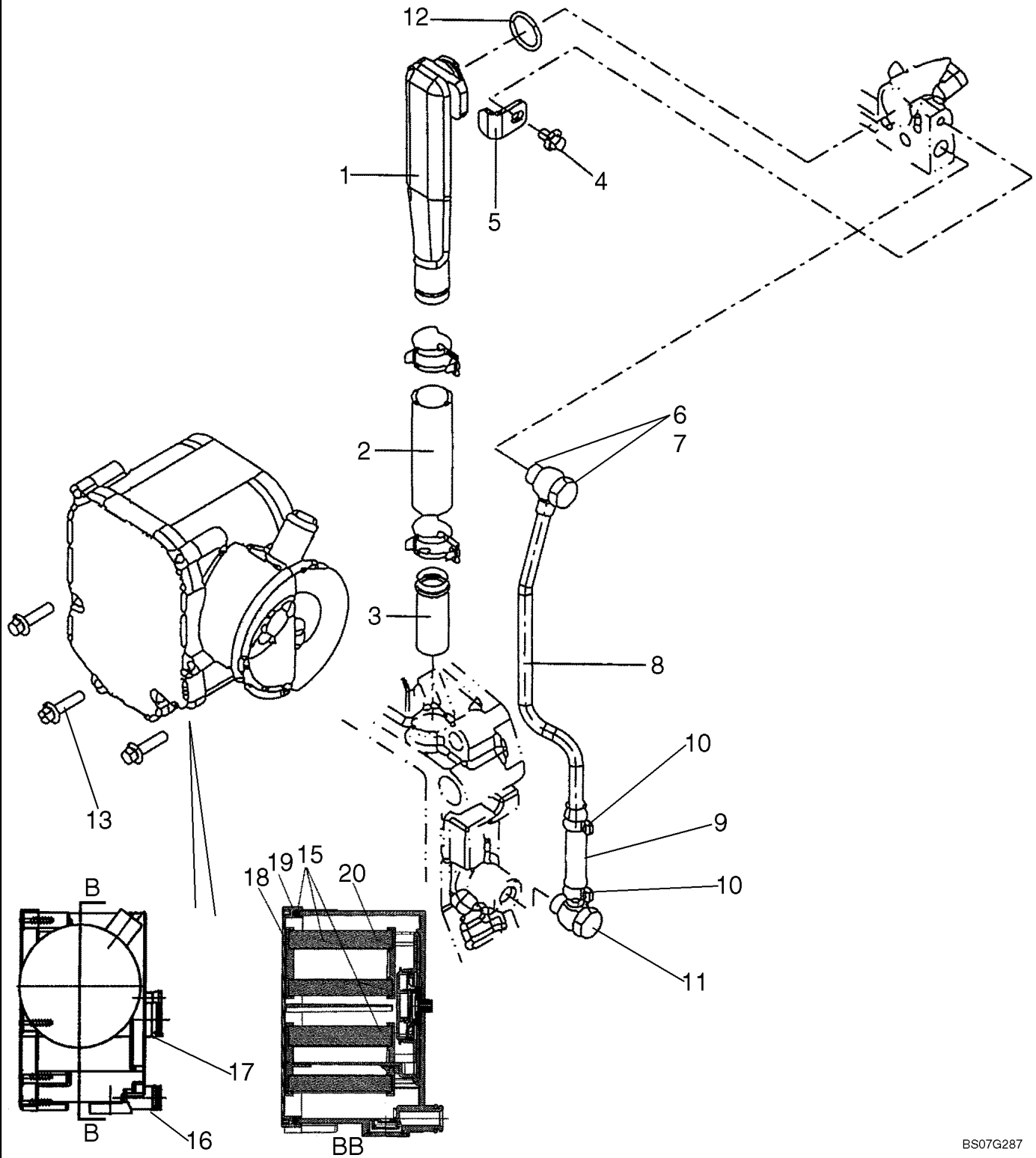
07/07

OIL PUMP, PAN - DRAIN LINE - COVER

REF	FN	PART NUMBER	YR/SN	QTY	DESCRIPTION
1		407632A1		1	COVER, Remote Drain
2		895-15010		4	WASHER, M11 x 24 x 2
3		627-10030		2	BOLT, Hex, M10 x 30, 10.9, Full Thd
4		832-10410		2	NUT, LOCK, M10 x 1.5, Cl 8

621E

BREATHER - ENGINE

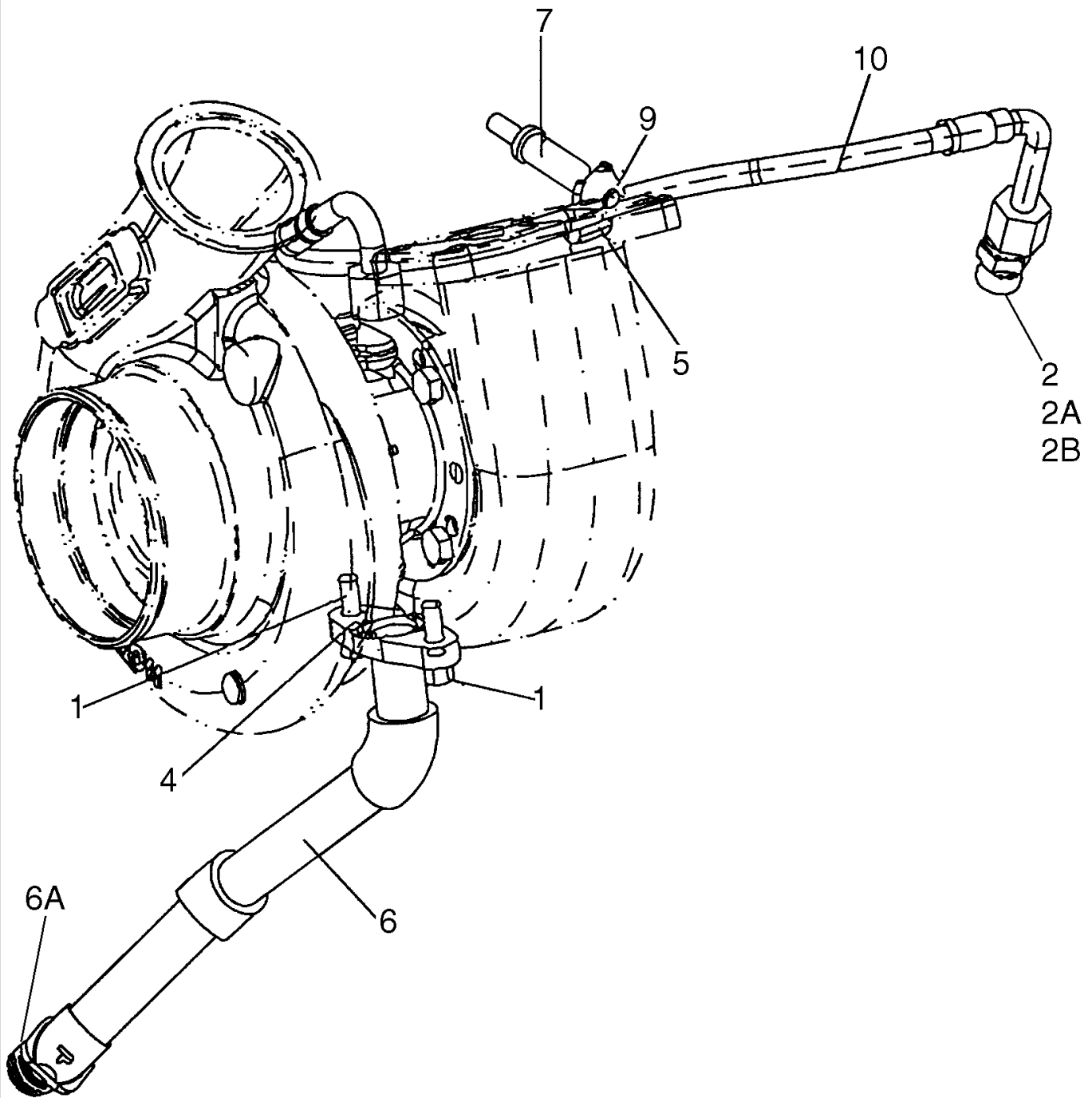


BREATHER - ENGINE

REF	FN	PART NUMBER	YR/SN	QTY	DESCRIPTION
		87579400		1	ENGINE, 6 Cylinder 6.7L Turbo, Tier III; Includes Figures 02-09 - 02-13, 02-15 - 02-41, 03-05 - 03-11; Incl. Refs. 1 - 21
1		4897534		1	TUBE, RIGID, Breather
2		4897546		1	SLEEVE, Tube
3		4897547		1	TUBE, RIGID, Connector
4		4897537		1	SCREW
5		4897536		1	BRACKET
		4899219		1	TUBE, RIGID, Breather Assy. Incl. Refs. 6 - 11
6		2852772		2	BOLT, BANJO
7		4899926		4	O-RING
8		NSS		1	NOT SERVICED SEPARATELY, Hose
9		4899240		1	HOSE, Plain
10		4899242		2	CLAMP
11		4899243		1	CONNECTOR, HYD.
12		4898439		1	O-RING
13		4899092		3	SCREW, Hex Flg, M6 x 1 x 25
		4892871		1	BREATHER, Assy. Incl. Refs. 14 - 21
14		2830301		6	SCREW, Breather Case, Not Illustrated
15		2830307		1	BREATHER, Crankcase
16		4898372		1	O-RING
17		2830304		1	O-RING
18		{2820302}		1	COVER, Protective
19		2830303		1	GASKET, Breather
20		2830592		2	FILTER, Breather
21		4893234		2	COLLAR, RETAINER, Not Illustrated

621E

TURBOCHARGER - DRAIN LINE

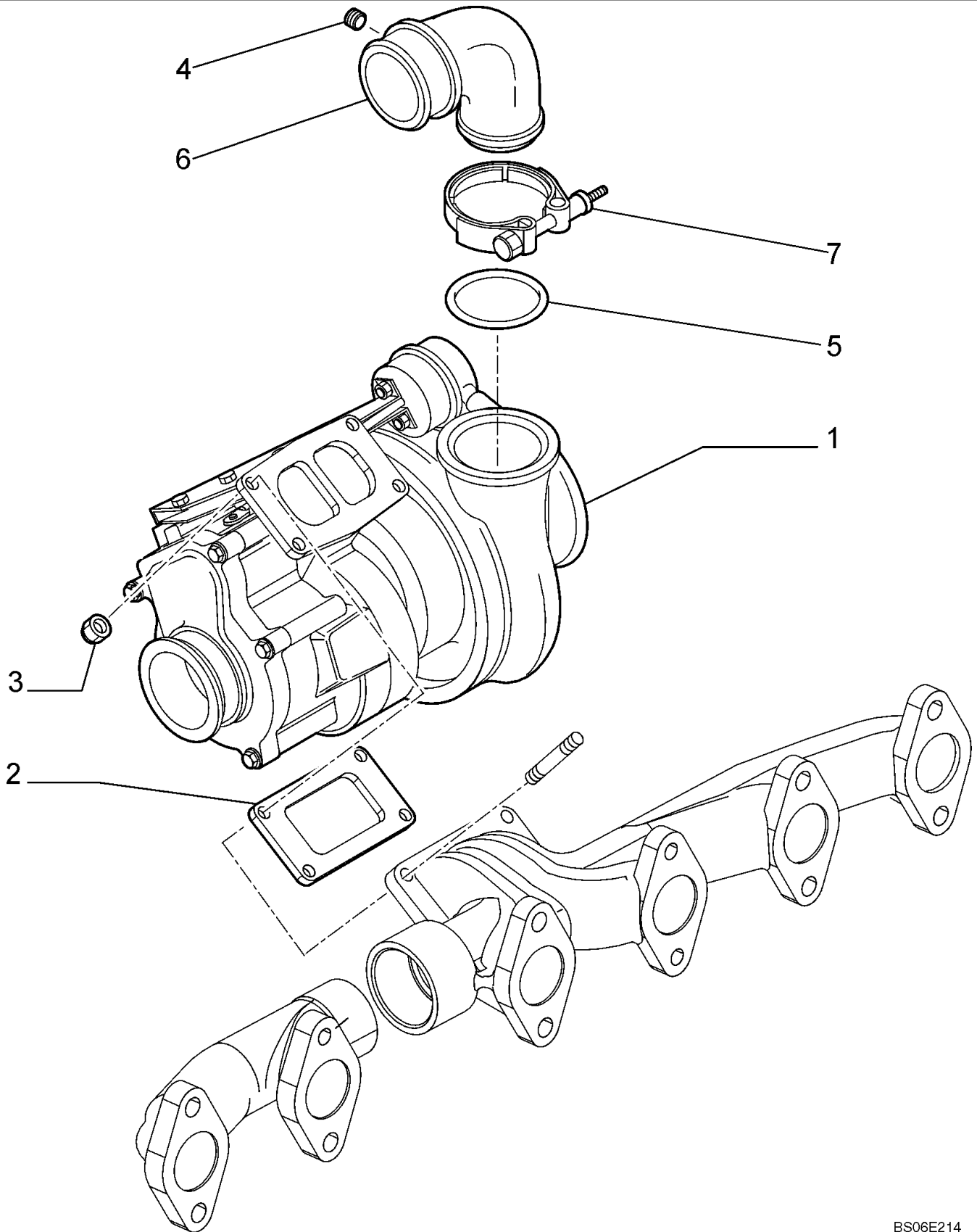


TURBOCHARGER - DRAIN LINE

REF	FN	PART NUMBER	YR/SN	QTY	DESCRIPTION
		87579400		1	ENGINE, 6 Cylinder 6.7L Turbo, Tier III; Includes Figures 02-09 - 02-13, 02-15 - 02-41, 03-05 - 03-11; Incl. Refs. 1 - 9
1		4899079		2	SCREW, Hex Flg, M8 x 1.25 x 25
2		4895107		1	CONNECTOR, HYD., Incl. Refs. 2A, 2B
2A		4899107		1	O-RING
2B		4899108		1	O-RING
4		4891288		1	GASKET
5		4899436		1	CLAMP
6		{2858402}		1	PIPE ASSY. Turbo Oil Drain, Incl. Ref. 6A
6A		2852801		1	O-RING
7		4896991		1	SCREW
7		2854375		1	STUD, In Alternative
8		4895089		1	PLUG, Not Illustrated
9		4899003		1	NUT, M8X1.25
10		4899377		1	HOSE, Flexible

621E

TURBOCHARGER

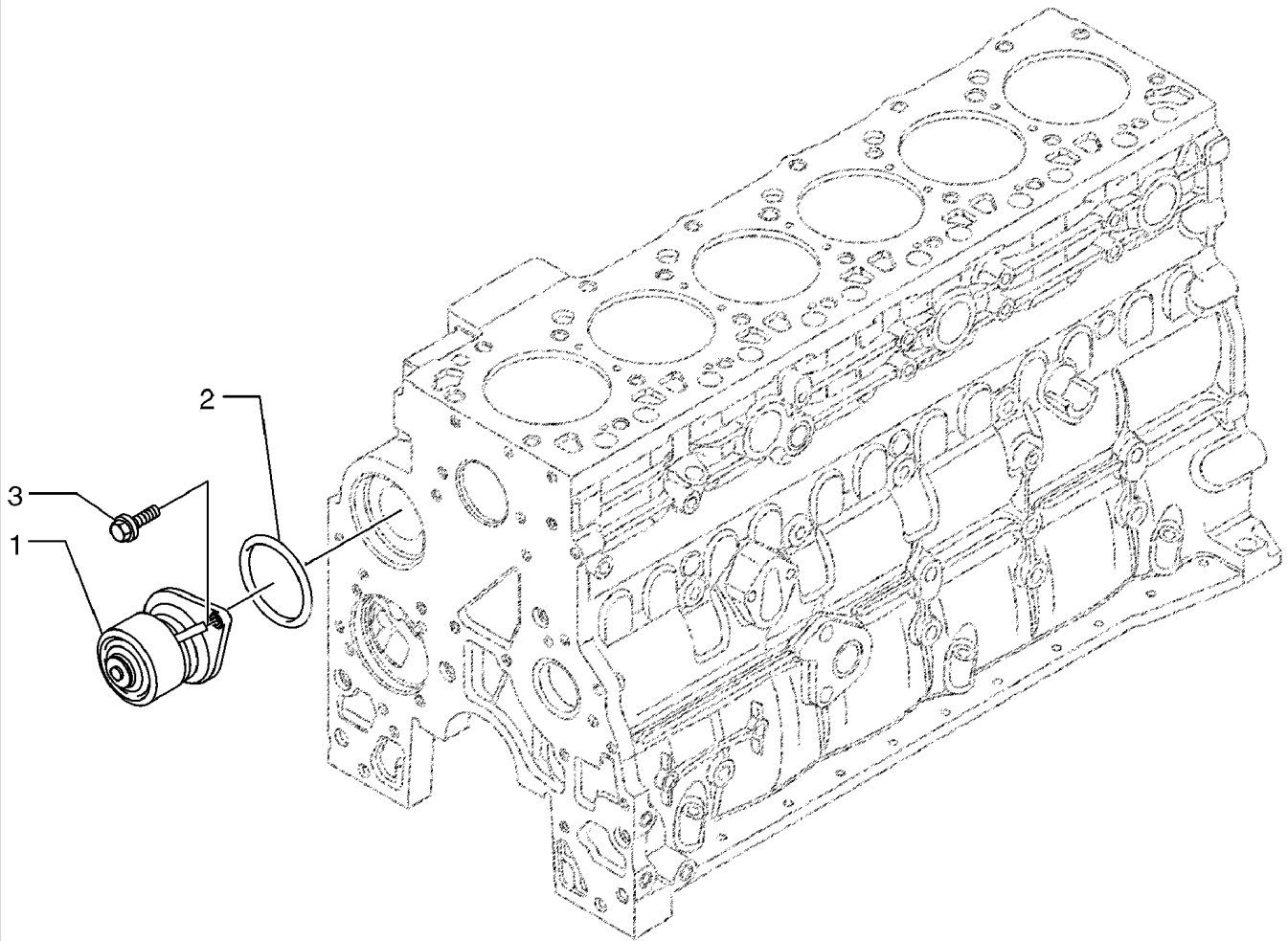


TURBOCHARGER

REF	FN	PART NUMBER	YR/SN	QTY	DESCRIPTION
		87579400		1	ENGINE, 6 Cylinder 6.7L Turbo, Tier III; Includes Figures 02-09 - 02-13, 02-15 - 02-41, 03-05 - 03-11; Incl. Refs. 1 - 7
1		2855124		1	TURBOCHARGER
2		4895132		1	GASKET
3		4899086		4	NUT
4		4895098		1	PLUG
5		4899087		1	O-RING
6		4895141		1	ELBOW
7		2852407		1	COLLAR CLAMP

621E

WATER PUMP

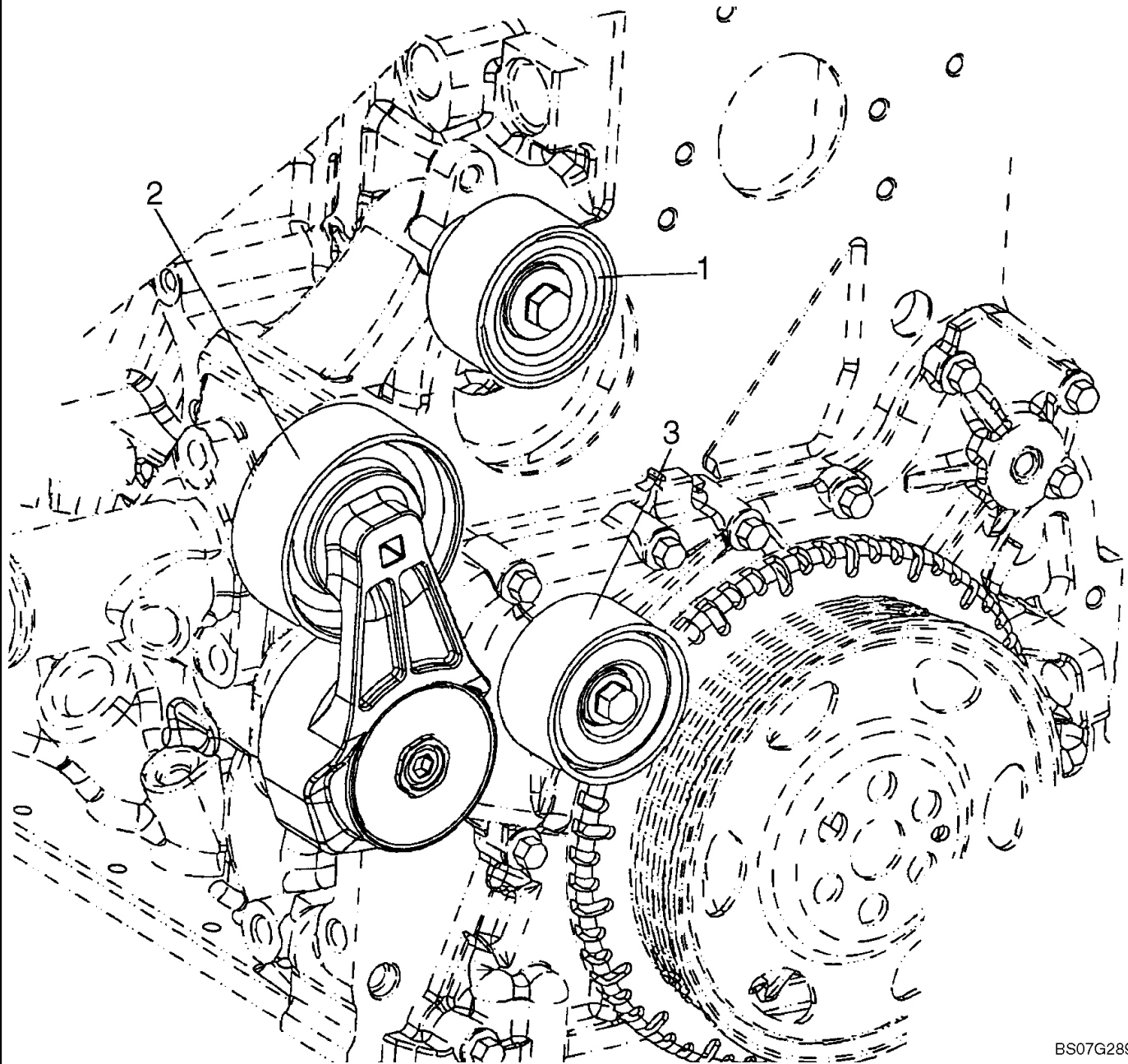


WATER PUMP

REF	FN	PART NUMBER	YR/SN	QTY	DESCRIPTION
		87579400		1	ENGINE, 6 Cylinder 6.7L Turbo, Tier III; Includes Figures 02-09 - 02-13, 02-15 - 02-41, 03-05 - 03-11; Incl. Refs. 1 - 3
1		4891252		1	PUMP, WATER
1		2852114		1	PUMP, WATER, In Alternative
2		2852047		1	GASKET
3		4899079		2	SCREW, Hex Flg, M8 x 1.25 x 25

	621E
--	-------------

WATER PUMP - TENSIONER ASSY

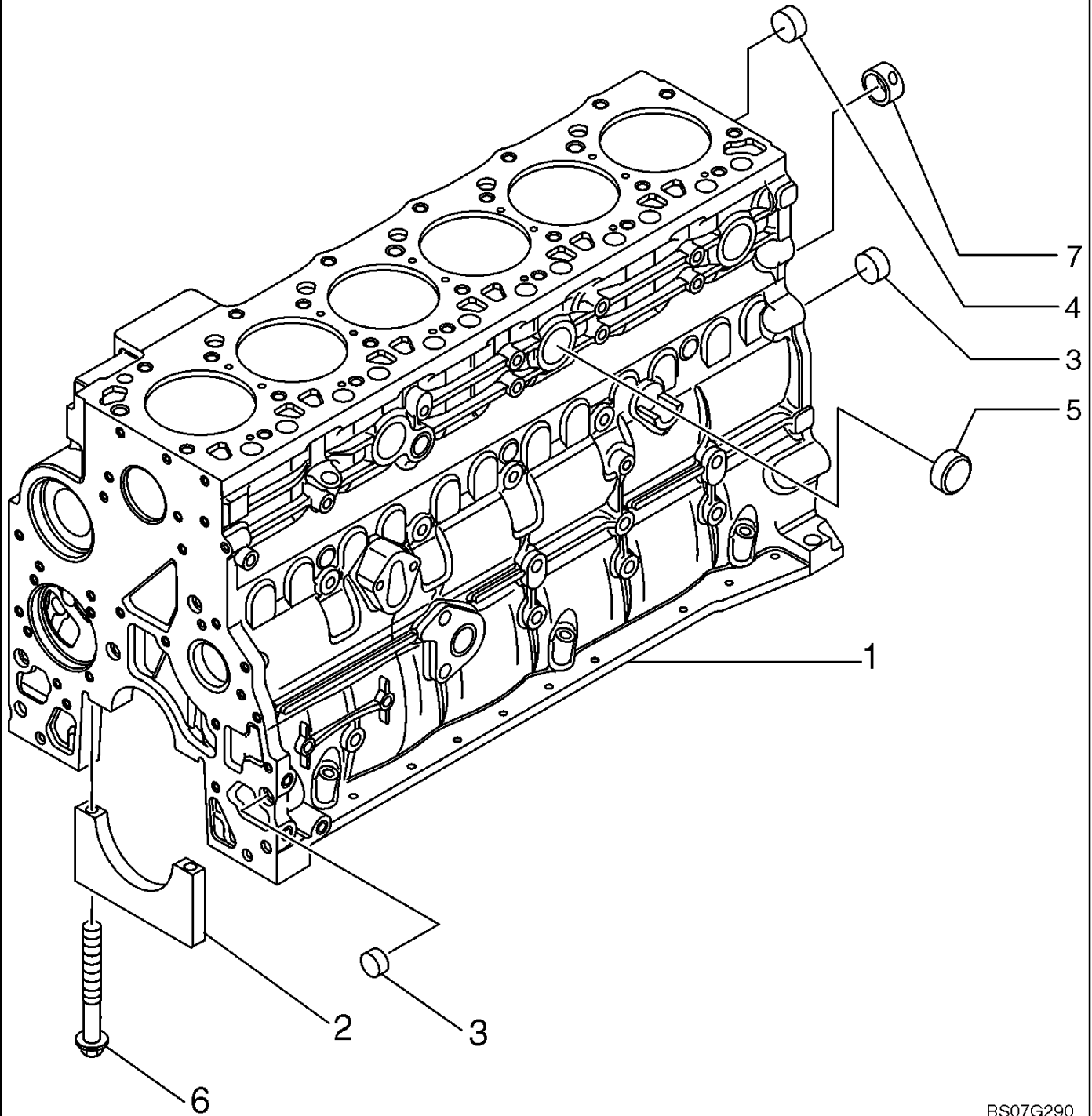


WATER PUMP - TENSIONER ASSY

REF	FN	PART NUMBER	YR/SN	QTY	DESCRIPTION
		87579400		1	ENGINE, 6 Cylinder 6.7L Turbo, Tier III; Includes Figures 02-09 - 02-13, 02-15 - 02-41, 03-05 - 03-11; Incl. Refs. 1 - 3
1		2852398		1	TENSIONER, BELT
2		2852396		1	TENSIONER, BELT
3		2852397		1	ROLLER, SHIFTER

621E

CYLINDER BLOCK

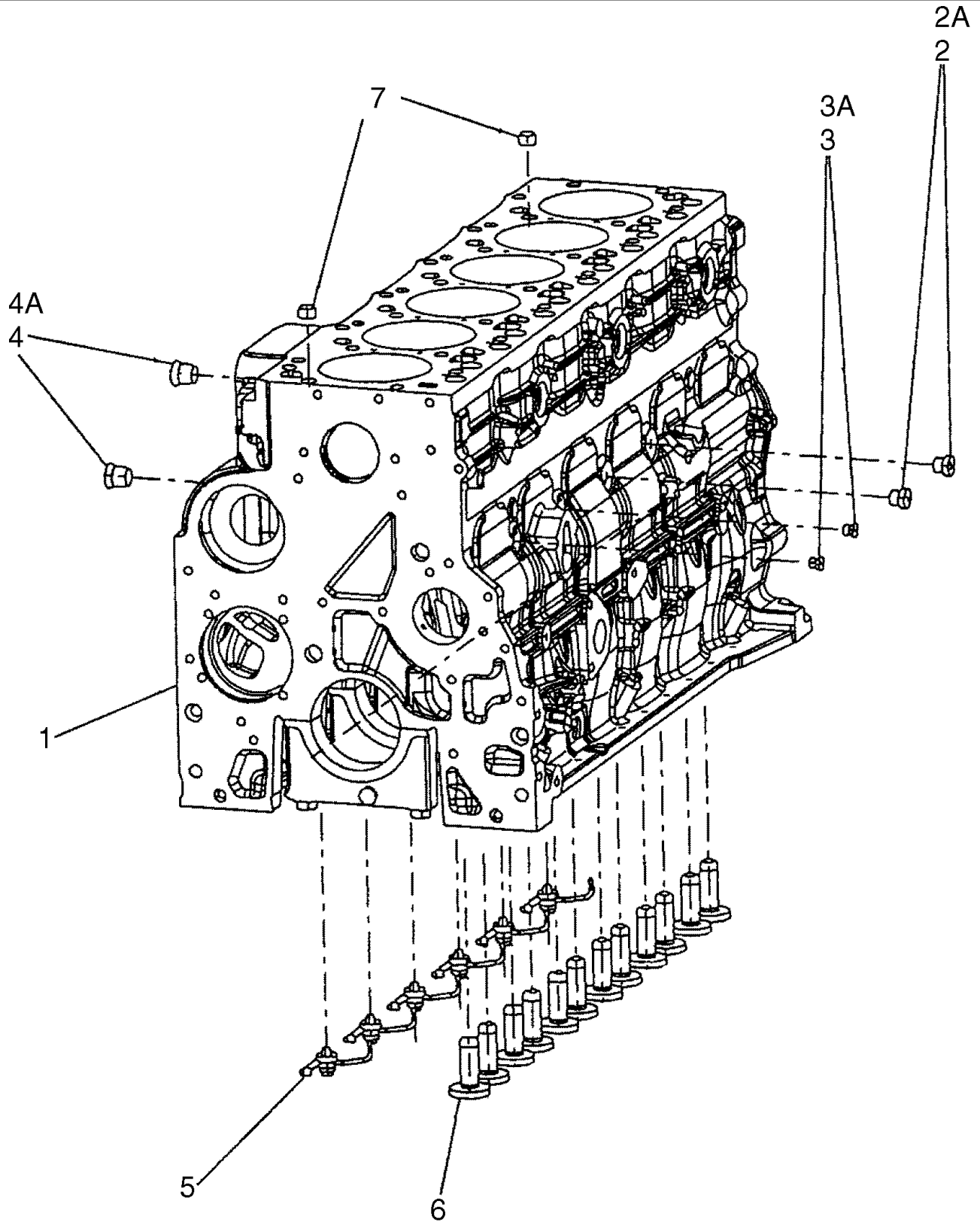


CYLINDER BLOCK

REF	FN	PART NUMBER	YR/SN	QTY	DESCRIPTION
		87579400		1	ENGINE, 6 Cylinder 6.7L Turbo, Tier III; Includes Figures 02-09 - 02-13, 02-15 - 02-41, 03-05 - 03-11; Incl. Refs. 1 - 8
		2830076		1	CYLINDER BLOCK, ASSY. Incl. Refs. 1 - 8
1		NSS		1	NOT SERVICED SEPARATELY, Cylinder Block
2		4895921		1	BEARING, CRANKSHAFT
3		4895039		3	PLUG
4		4895038		6	PLUG
5		4895228		3	PLUG
6		4891353		14	SCREW, Flg Hd, M12 x 1.5 x 120
7		4895040		1	BUSHING
8		4895919		6	BEARING, CRANKSHAFT, Not Illustrated

621E

CYLINDER BLOCK - PLUG ASSY

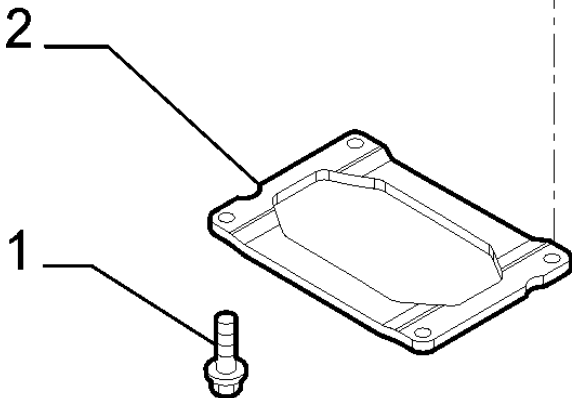
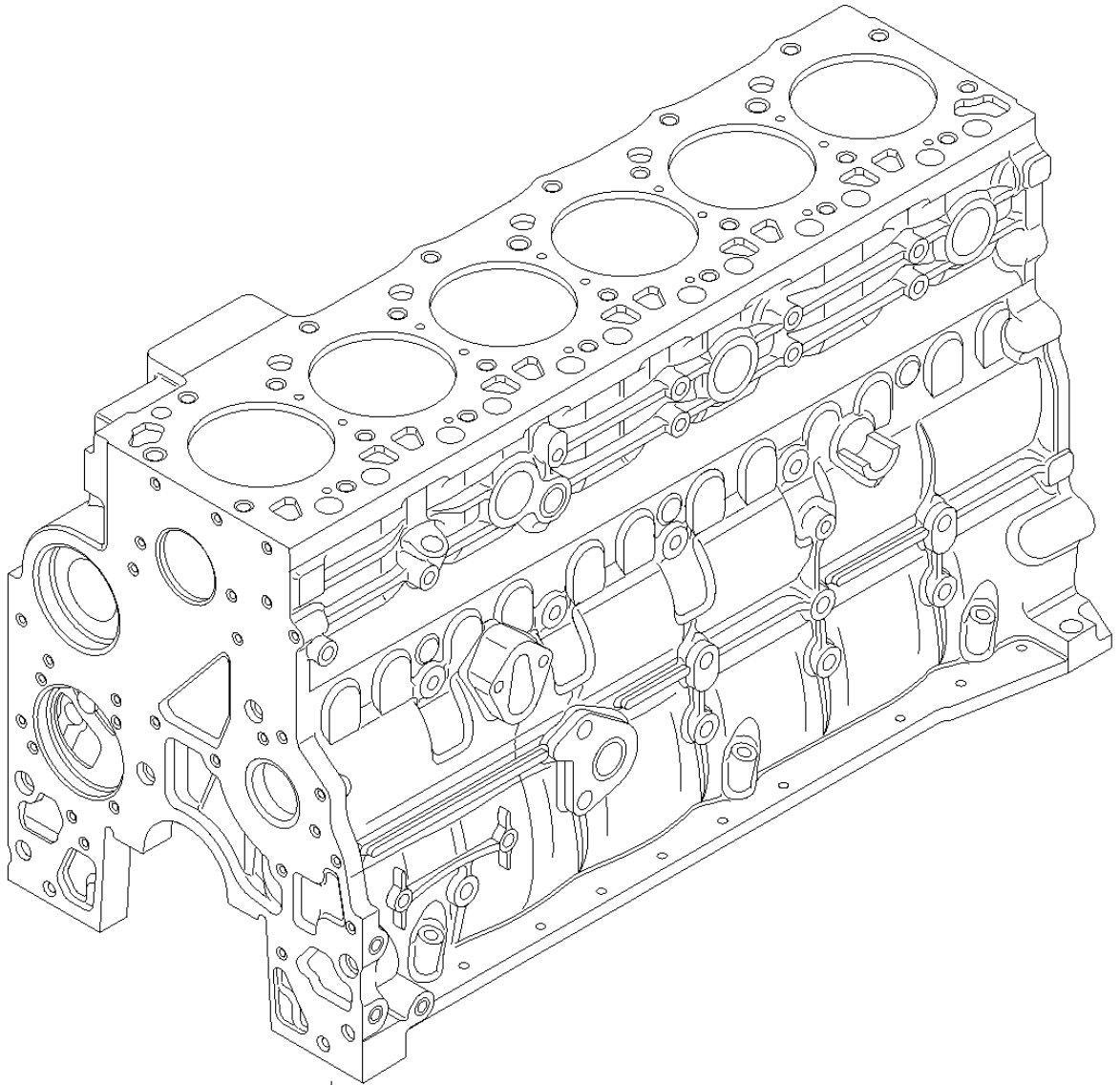


CYLINDER BLOCK - PLUG ASSY

REF	FN	PART NUMBER	YR/SN	QTY	DESCRIPTION
		87579400		1	ENGINE, 6 Cylinder 6.7L Turbo, Tier III; Includes Figures 02-09 - 02-13, 02-15 - 02-41, 03-05 - 03-11; Incl. Refs. 1 - 7
1		2830076		1	CYLINDER BLOCK, ASSY. See Figure 02-20
2		4895605		2	PLUG, M14 x 1.5, Incl. Ref. 2A
2A		4899115		1	O-RING
3		4899009		2	PLUG, M10 x 1.5, Incl. Ref. 3A
3A		4899072		1	O-RING
4		4895392		2	PLUG, M18 x 1.5, Incl. Ref. 4A
4A		4895393		1	O-RING
5		2852202		6	NOZZLE, LUB. OIL JET
6		4899803		12	TAPPET
7		4895049		2	DOWEL

621E

CYLINDER BLOCK - NOISE CONTROL



This as a preview PDF file from best-manuals.com



Download full PDF manual at best-manuals.com