

# 329D and 333D Compact Track Loaders



## OPERATOR'S MANUAL 329D and 333D Compact Track Loaders OMT253017 ISSUE A2 (ENGLISH)

CALIFORNIA  
Proposition 65 Warning

Diesel engine exhaust and some of its constituents are known to the State of California to cause cancer, birth defects, and other reproductive harm.

If this product contains a gasoline engine:

**⚠ WARNING**

The engine exhaust from this product contains chemicals known to the State of California to cause cancer, birth defects or other reproductive harm.

The State of California requires the above two warnings.  
Additional Proposition 65 Warnings can be found in this manual.

**Worldwide Construction  
And Forestry Division**  
PRINTED IN U.S.A.

# Introduction

## Foreword

READ THIS MANUAL carefully to learn how to operate and service machine correctly. Personal injury or equipment damage can result if manual is not read. This manual and safety signs on the machine may also be available in other languages; see an authorized John Deere dealer to order.

THIS MANUAL SHOULD BE CONSIDERED a permanent part of the machine and should remain with machine when machine is sold.

MEASUREMENTS in this manual are given in both metric and customary U.S. unit equivalents. Use only correct replacement parts and fasteners. Metric and inch fasteners may require a specific metric or inch wrench.

RIGHT-HAND AND LEFT-HAND sides are determined by facing in the direction of forward travel.

WRITE PRODUCT IDENTIFICATION NUMBERS (P.I.N.) in the Machine Numbers section. Accurately record all the numbers to help in tracing the machine if machine is ever stolen. A dealer also needs these numbers when parts are ordered. File the identification numbers in a secure place off machine.

WARRANTY is provided as part of John Deere's support program for customers who operate and maintain their equipment as described in this manual. The warranty is explained on the warranty certificate or statement which should have been received from the dealer.

This warranty provides the assurance that John Deere backs the products where defects appear within the warranty period. In some circumstances, John Deere also provides field improvements, often without charge to the customer, even if the product is out of warranty. Should the equipment be abused, or modified to change its performance beyond the original factory specifications, the warranty will become void and field improvements may be denied. Setting fuel delivery above specifications or otherwise overpowering machines results in such action.

If current owner is not the original owner of this machine, contact an authorized John Deere dealer to inform them of this unit's serial number. This will help John Deere notify current owner of any issues or product improvements.

TX,FOREWORD -19-30APR20-1/1

## IMPORTANT

Warranty will not apply to engine and drivetrain failures resulting from unauthorized adjustments to this engine.

Unauthorized adjustments are in violation of the emissions regulations applicable to this engine and may result in substantial fines and penalties.

VD76477,000104D -19-27JUN12-1/1

## EPA Non-road Emissions Control Warranty Statement—Compression Ignition

DXLOGOV1 —UN—28APR09



**JOHN DEERE**

### U.S. AND CANADA EMISSION CONTROL WARRANTY STATEMENT YOUR WARRANTY RIGHTS AND OBLIGATIONS

To determine if the John Deere engine qualifies for the additional warranties set forth below, look for the "Emissions Control Information" label located on the engine. If the engine is operated in the United States or Canada and the Emissions Control information label states: "This engine complies with US EPA regulations for nonroad and stationary diesel engines", or "This engine conforms to US EPA nonroad compression-ignition regulations", refer to the "U.S. and Canada Emission Control Warranty Statement." If the engine is operated in California, and the label states: "This engine complies with US EPA and CARB regulations for nonroad diesel engines", or "This engine conforms to US EPA and California nonroad compression-ignition emission regulations", also refer to the "California Emission Control Warranty Statement."

Warranties stated on this certificate refer only to emissions-related parts and components of your engine. The complete engine warranty, less emissions-related parts and components, is provided separately. If you have any questions about your warranty rights and responsibilities, you should contact John Deere at 1-319-292-5400.

#### JOHN DEERE'S WARRANTY RESPONSIBILITY

John Deere warrants to the ultimate purchaser and each subsequent purchaser that this off-road diesel engine including all parts of its emission-control system was designed, built and equipped so as to conform at the time of the sale with Section 213 of the Clean Air Act and is free from defects in materials and workmanship which would cause the engine to fail to conform with applicable US EPA regulations for a period of five years from the date the engine is placed into service or 3,000 hours of operation, whichever first occurs.

Where a warrantable condition exists, John Deere will repair or replace, as it elects, any part or component with a defect in materials or workmanship that would increase the engine's emissions of any regulated pollutant within the stated warranty period at no cost to you, including expenses related to diagnosing and repairing or replacing emission-related parts. Warranty coverage is subject to the limitations and exclusions set forth herein. Emission-related components include engine parts developed to control emissions related to the following:

Air-Induction System	Aftertreatment Devices
Fuel System	Crankcase Ventilation Valves
Ignition System	Sensors
Exhaust Gas Recirculation Systems	Engine Electronic Control Units

#### EMISSION WARRANTY EXCLUSIONS

John Deere may deny warranty claims for malfunctions or failures caused by:

- Non-performance of maintenance requirements listed in the Operator's Manual
- The use of the engine/equipment in a manner for which it was not designed
- Abuse, neglect, improper maintenance or unapproved modifications or alterations
- Accidents for which it does not have responsibility or by acts of God

The off-road diesel engine is designed to operate on diesel fuel as specified in the Fuels, Lubricants and Coolants section in the Operators Manual. Use of any other fuel can harm the emissions control system of the engine/equipment and is not approved for use.

To the extent permitted by law John Deere is not liable for damage to other engine components caused by a failure of an emission-related part, unless otherwise covered by standard warranty.

**THIS WARRANTY IS EXPRESSLY IN LIEU OF ANY OTHER WARRANTIES, EXPRESS OR IMPLIED, INCLUDING ANY WARRANTY OF MERCHANTABILITY OR FITNESS FOR A PARTICULAR PURPOSE. REMEDIES UNDER THIS WARRANTY ARE LIMITED TO THE PROVISIONS OF MATERIAL AND SERVICES AS SPECIFIED HEREIN. WHERE PERMITTED BY LAW, NEITHER JOHN DEERE NOR ANY AUTHORIZED JOHN DEERE ENGINE DISTRIBUTOR, DEALER, OR REPAIR FACILITY OR ANY COMPANY AFFILIATED WITH JOHN DEERE WILL BE LIABLE FOR INCIDENTAL OR CONSEQUENTIAL DAMAGES.**

Emission\_CI\_EPA (18Dec09)

Continued on next page

DX,EMISSIONS,EPA -19-12DEC12-1/2



**JOHN DEERE**

**U.S. AND CANADA EMISSION CONTROL WARRANTY STATEMENT  
YOUR WARRANTY RIGHTS AND OBLIGATIONS**

To determine if the John Deere engine qualifies for the additional warranties set forth below, look for the "Emissions Control Information" label located on the engine. If the engine is operated in the United States or Canada and the Emissions Control information label states: "This engine complies with US EPA regulations for nonroad and stationary diesel engines", or "This engine conforms to US EPA nonroad compression-ignition regulations", refer to the "U.S. and Canada Emission Control Warranty Statement." If the engine is operated in California, and the label states: "This engine complies with US EPA and CARB regulations for nonroad diesel engines", or "This engine conforms to US EPA and California nonroad compression-ignition emission regulations", also refer to the "California Emission Control Warranty Statement."

Warranties stated on this certificate refer only to emissions-related parts and components of your engine. The complete engine warranty, less emissions-related parts and components, is provided separately. If you have any questions about your warranty rights and responsibilities, you should contact John Deere at 1-319-292-5400.

**JOHN DEERE'S WARRANTY RESPONSIBILITY**

John Deere warrants to the ultimate purchaser and each subsequent purchaser that this off-road diesel engine including all parts of its emission-control system was designed, built and equipped so as to conform at the time of the sale with Section 213 of the Clean Air Act and is free from defects in materials and workmanship which would cause the engine to fail to conform with applicable US EPA regulations for a period of five years from the date the engine is placed into service or 3,000 hours of operation, whichever first occurs.

Where a warrantable condition exists, John Deere will repair or replace, as it elects, any part or component with a defect in materials or workmanship that would increase the engine's emissions of any regulated pollutant within the stated warranty period at no cost to you, including expenses related to diagnosing and repairing or replacing emission-related parts. Warranty coverage is subject to the limitations and exclusions set forth herein. Emission-related components include engine parts developed to control emissions related to the following:

Air-Induction System	Aftertreatment Devices
Fuel System	Crankcase Ventilation Valves
Ignition System	Sensors
Exhaust Gas Recirculation Systems	Engine Electronic Control Units

**EMISSION WARRANTY EXCLUSIONS**

John Deere may deny warranty claims for malfunctions or failures caused by:

- Non-performance of maintenance requirements listed in the Operator's Manual
- The use of the engine/equipment in a manner for which it was not designed
- Abuse, neglect, improper maintenance or unapproved modifications or alterations
- Accidents for which it does not have responsibility or by acts of God

The off-road diesel engine is designed to operate on diesel fuel as specified in the Fuels, Lubricants and Coolants section in the Operators Manual. Use of any other fuel can harm the emissions control system of the engine/equipment and is not approved for use.

To the extent permitted by law John Deere is not liable for damage to other engine components caused by a failure of an emission-related part, unless otherwise covered by standard warranty.

**THIS WARRANTY IS EXPRESSLY IN LIEU OF ANY OTHER WARRANTIES, EXPRESS OR IMPLIED, INCLUDING ANY WARRANTY OF MERCHANTABILITY OR FITNESS FOR A PARTICULAR PURPOSE. REMEDIES UNDER THIS WARRANTY ARE LIMITED TO THE PROVISIONS OF MATERIAL AND SERVICES AS SPECIFIED HEREIN. WHERE PERMITTED BY LAW, NEITHER JOHN DEERE NOR ANY AUTHORIZED JOHN DEERE ENGINE DISTRIBUTOR, DEALER, OR REPAIR FACILITY OR ANY COMPANY AFFILIATED WITH JOHN DEERE WILL BE LIABLE FOR INCIDENTAL OR CONSEQUENTIAL DAMAGES.**

Emission\_CI\_EPA (18Dec09)

TS1721—UN—15JUL13

## CARB Non-road Emissions Control Warranty Statement—Compression Ignition

### Emissions Control Warranty Statement 2019 through 2021

DXLOGOV1 —UN—28APR09



**JOHN DEERE**

#### **CALIFORNIA EMISSIONS CONTROL WARRANTY STATEMENT YOUR WARRANTY RIGHTS AND OBLIGATIONS**

To determine if the John Deere engine qualifies for the additional warranties set forth below, look for the “Emission Control Information” label located on the engine. If the engine is operated in the United States or Canada and the engine label states: “This engine complies with US EPA regulations for nonroad and stationary diesel engines”, or “This engine complies with US EPA regulations for stationary emergency diesel engines”, refer to the “U.S. and Canada Emission Control Warranty Statement.” If the engine is operated in California, and the engine label states: “This engine complies with US EPA and CARB regulations for nonroad diesel engines” also refer to the “California Emissions Control Warranty Statement.”

Warranties stated on this certificate refer only to emissions-related parts and components of your engine. The complete engine warranty, less emission-related parts and components, is provided separately. If you have any questions about your warranty rights and responsibilities, you should contact John Deere at 1-319-292-5400.

#### **CALIFORNIA EMISSIONS CONTROL WARRANTY STATEMENT:**

The California Air Resources Board (CARB) is pleased to explain the emission-control system warranty on 2019 through 2021 off-road diesel engines. In California, new off-road engines must be designed, built and equipped to meet the State’s stringent anti-smog standards. John Deere must warrant the emission control system on your engine for the periods of time listed below provided there has been no abuse, neglect or improper maintenance of your engine.

Your emission control system may include parts such as the fuel injection system and the air induction system. Also included may be hoses, belts, connectors and other emission-related assemblies.

John Deere warrants to the ultimate purchaser and each subsequent purchaser that this off-road diesel engine was designed, built, and equipped so as to conform at the time of sale with all applicable regulations adopted by CARB and is free from defects in materials and workmanship which would cause the failure of a warranted part to be identical in all material respects to the part as described in John Deere’s application for certification for a period of five years from the date the engine is delivered to an ultimate purchaser or 3,000 hours of operation, whichever occurs first for all engines rated at 19 kW and greater. In the absence of a device to measure hours of use, the engine shall be warranted for a period of five years.

#### **EMISSIONS WARRANTY EXCLUSIONS:**

John Deere may deny warranty claims for failures caused by the use of an add-on or modified part which has not been exempted by the CARB. A modified part is an aftermarket part intended to replace an original emission-related part which is not functionally identical in all respects and which in any way affects emissions. An add-on part is any aftermarket part which is not a modified part or a replacement part.

In no event will John Deere, any authorized engine distributor, dealer, or repair facility, or any company affiliated with John Deere be liable for incidental or consequential damage.

## Introduction

### JOHN DEERE'S WARRANTY RESPONSIBILITY:

Where a warrantable condition exists, John Deere will repair or replace, as it elects, your off-road diesel engine at no cost to you, including diagnosis, parts or labor. Warranty coverage is subject to the limitations and exclusions set forth herein. The off-road diesel engine is warranted for a period of five years from the date the engine is delivered to an ultimate purchaser or 3,000 hours of operation, whichever occurs first. The following are emissions-related parts:

#### Air Induction System

- Intake manifold
- Turbocharger
- Charge air cooler

#### Fuel Metering system

- Fuel injection system

#### Exhaust Gas Recirculation

- EGR valve

#### Catalyst or Thermal Reactor Systems

- Catalytic converter
- Exhaust manifold

#### Emission control labels

#### Particulate Controls

- Any device used to capture particulate emissions
- Any device used in the regeneration of the capturing system
- Enclosures and manifolding
- Smoke Puff Limiters

#### Positive Crankcase Ventilation (PCV) System

- PCV valve
- Oil filler cap

#### Advanced Oxides of Nitrogen (NOx) Controls

- NOx absorbers and catalysts

#### SCR systems and urea containers/dispensing systems

#### Miscellaneous Items used in Above Systems

- Electronic control units, sensors, actuators, wiring harnesses, hoses, connectors, clamps, fittings, gasket, mounting hardware

Any warranted emissions-related part scheduled for replacement as required maintenance is warranted by John Deere for the period of time prior to the first scheduled replacement point for the part. Any warranted emissions-related part not scheduled for replacement as required maintenance or scheduled only for regular inspection is warranted by John Deere for the stated warranty period.

### OWNER'S WARRANTY RESPONSIBILITIES:

As the off-road diesel engine owner you are responsible for the performance of the required maintenance listed in your Operator's Manual. John Deere recommends that the owner retain all receipts covering maintenance on the off-road diesel engine, but John Deere cannot deny warranty solely for the lack of receipts or for the owner's failure to ensure the performance of all scheduled maintenance. However, as the off-road diesel engine owner, you should be aware that John Deere may deny you warranty coverage if your off-road diesel engine or a part has failed due to abuse, neglect, improper maintenance or unapproved modifications.

The off-road diesel engine is designed to operate on diesel fuel as specified in the Fuels, Lubricants and Coolants section in the Operators Manual. Use of any other fuel may result in the engine no longer operating in compliance with applicable emissions requirements.

The owner is responsible for initiating the warranty process, and should present the machine to the nearest authorized John Deere dealer as soon as a problem is suspected. The warranty repairs should be completed by the authorized John Deere dealer as quickly as possible.

Emissions regulations require the customer to bring the unit to an authorized servicing dealer when warranty service is required. As a result, John Deere is NOT liable for travel or mileage on emissions warranty service calls.

Emission\_CI\_CARB (01Feb17)

Continued on next page

DX,EMISSIONS,CARB -19-26AUG20-2/8

**Emissions Control Warranty Statement 2019 through 2021**

DXLOGOV1 —UN—28APR09



**JOHN DEERE**

**CALIFORNIA EMISSIONS CONTROL WARRANTY STATEMENT  
YOUR WARRANTY RIGHTS AND OBLIGATIONS**

To determine if the John Deere engine qualifies for the additional warranties set forth below, look for the "Emission Control Information" label located on the engine. If the engine is operated in the United States or Canada and the engine label states: "This engine complies with US EPA regulations for nonroad and stationary diesel engines", or "This engine complies with US EPA regulations for stationary emergency diesel engines", refer to the "U.S. and Canada Emission Control Warranty Statement." If the engine is operated in California, and the engine label states: "This engine complies with US EPA and CARB regulations for nonroad diesel engines" also refer to the "California Emissions Control Warranty Statement."

Warranties stated on this certificate refer only to emissions-related parts and components of your engine. The complete engine warranty, less emission-related parts and components, is provided separately. If you have any questions about your warranty rights and responsibilities, you should contact John Deere at 1-319-292-5400.

**CALIFORNIA EMISSIONS CONTROL WARRANTY STATEMENT:**

The California Air Resources Board (CARB) is pleased to explain the emission-control system warranty on 2019 through 2021 off-road diesel engines. In California, new off-road engines must be designed, built and equipped to meet the State's stringent anti-smog standards. John Deere must warrant the emission control system on your engine for the periods of time listed below provided there has been no abuse, neglect or improper maintenance of your engine.

Your emission control system may include parts such as the fuel injection system and the air induction system. Also included may be hoses, belts, connectors and other emission-related assemblies.

John Deere warrants to the ultimate purchaser and each subsequent purchaser that this off-road diesel engine was designed, built, and equipped so as to conform at the time of sale with all applicable regulations adopted by CARB and is free from defects in materials and workmanship which would cause the failure of a warranted part to be identical in all material respects to the part as described in John Deere's application for certification for a period of five years from the date the engine is delivered to an ultimate purchaser or 3,000 hours of operation, whichever occurs first for all engines rated at 19 kW and greater. In the absence of a device to measure hours of use, the engine shall be warranted for a period of five years.

**EMISSIONS WARRANTY EXCLUSIONS:**

John Deere may deny warranty claims for failures caused by the use of an add-on or modified part which has not been exempted by the CARB. A modified part is an aftermarket part intended to replace an original emission-related part which is not functionally identical in all respects and which in any way affects emissions. An add-on part is any aftermarket part which is not a modified part or a replacement part.

In no event will John Deere, any authorized engine distributor, dealer, or repair facility, or any company affiliated with John Deere be liable for incidental or consequential damage.

Continued on next page

DX,EMISSIONS,CARB -19-26AUG20-3/8

RG29280 —UN—02FEB17

## Introduction

### JOHN DEERE'S WARRANTY RESPONSIBILITY:

Where a warrantable condition exists, John Deere will repair or replace, as it elects, your off-road diesel engine at no cost to you, including diagnosis, parts or labor. Warranty coverage is subject to the limitations and exclusions set forth herein. The off-road diesel engine is warranted for a period of five years from the date the engine is delivered to an ultimate purchaser or 3,000 hours of operation, whichever occurs first. The following are emissions-related parts:

#### Air Induction System

- Intake manifold
- Turbocharger
- Charge air cooler

#### Fuel Metering system

- Fuel injection system

#### Exhaust Gas Recirculation

- EGR valve

#### Catalyst or Thermal Reactor Systems

- Catalytic converter
- Exhaust manifold

#### Emission control labels

##### Particulate Controls

- Any device used to capture particulate emissions
- Any device used in the regeneration of the capturing system
- Enclosures and manifolding
- Smoke Puff Limiters

##### Positive Crankcase Ventilation (PCV) System

- PCV valve
- Oil filler cap

#### Advanced Oxides of Nitrogen (NOx) Controls

- NOx absorbers and catalysts

#### SCR systems and urea containers/dispensing systems

#### Miscellaneous Items used in Above Systems

- Electronic control units, sensors, actuators, wiring harnesses, hoses, connectors, clamps, fittings, gasket, mounting hardware

Any warranted emissions-related part scheduled for replacement as required maintenance is warranted by John Deere for the period of time prior to the first scheduled replacement point for the part. Any warranted emissions-related part not scheduled for replacement as required maintenance or scheduled only for regular inspection is warranted by John Deere for the stated warranty period.

### OWNER'S WARRANTY RESPONSIBILITIES:

As the off-road diesel engine owner you are responsible for the performance of the required maintenance listed in your Operator's Manual. John Deere recommends that the owner retain all receipts covering maintenance on the off-road diesel engine, but John Deere cannot deny warranty solely for the lack of receipts or for the owner's failure to ensure the performance of all scheduled maintenance. However, as the off-road diesel engine owner, you should be aware that John Deere may deny you warranty coverage if your off-road diesel engine or a part has failed due to abuse, neglect, improper maintenance or unapproved modifications.

The off-road diesel engine is designed to operate on diesel fuel as specified in the Fuels, Lubricants and Coolants section in the Operators Manual. Use of any other fuel may result in the engine no longer operating in compliance with applicable emissions requirements.

The owner is responsible for initiating the warranty process, and should present the machine to the nearest authorized John Deere dealer as soon as a problem is suspected. The warranty repairs should be completed by the authorized John Deere dealer as quickly as possible.

Emissions regulations require the customer to bring the unit to an authorized servicing dealer when warranty service is required. As a result, John Deere is NOT liable for travel or mileage on emissions warranty service calls.

Emission\_CI\_CARB (01Feb17)

Continued on next page

DX,EMISSIONS,CARB -19-26AUG20-4/8

RG29281 —UN—27FEB17



## Emissions Control Warranty Statement 2022 through 2024

DXLOGOV1 —UN—28APR09



**JOHN DEERE**

### **CALIFORNIA EMISSIONS CONTROL WARRANTY STATEMENT YOUR WARRANTY RIGHTS AND OBLIGATIONS**

To determine if the John Deere engine qualifies for the additional warranties set forth below, look for the "Emission Control Information" label located on the engine. If the engine is operated in the United States or Canada and the engine label states: "This engine complies with US EPA regulations for nonroad and stationary diesel engines", or "This engine complies with US EPA regulations for stationary emergency diesel engines", refer to the "U.S. and Canada Emission Control Warranty Statement." If the engine is operated in California, and the engine label states: "This engine complies with US EPA and California regulations for nonroad/off-road diesel engines" also refer to the "California Emissions Control Warranty Statement."

Warranties stated on this certificate refer only to emissions-related parts and components of your engine. The complete engine warranty, less emission-related parts and components, is provided separately. If you have any questions about your warranty rights and responsibilities, you should contact John Deere at 1-319-292-5400.

#### **CALIFORNIA EMISSIONS CONTROL WARRANTY STATEMENT:**

The California Air Resources Board (CARB) is pleased to explain the emission-control system warranty on 2022 through 2024 off-road diesel engines. In California, new off-road engines must be designed, built and equipped to meet the State's stringent anti-smog standards. John Deere must warrant the emission control system on your engine for the periods of time listed below provided there has been no abuse, neglect or improper maintenance of your engine.

Your emission control system may include parts such as the fuel injection system and the air induction system. Also included may be hoses, belts, connectors and other emission-related assemblies.

John Deere warrants to the ultimate purchaser and each subsequent purchaser that this off-road diesel engine was designed, built, and equipped so as to conform at the time of sale with all applicable regulations adopted by CARB. John Deere warrants that this engine is free from defects in materials and workmanship which would cause the failure of emissions warranted parts to be identical in all material respects to the part as described in John Deere's application for certification for a period of five years from the date the engine is delivered to an ultimate purchaser or 3,000 hours of operation, whichever occurs first. This applies to all engines rated at 19 kW and greater. In the absence of a device to measure hours of use, the engine shall be warranted for a period of five years.

#### **EMISSIONS WARRANTY EXCLUSIONS:**

John Deere may deny warranty claims for failures caused by the use of an add-on or modified part which has not been exempted by the CARB. A modified part is an aftermarket part intended to replace an original emission-related part which is not functionally identical in all respects and which in any way affects emissions. An add-on part is any aftermarket part which is not a modified part or a replacement part.

In no event will John Deere, any authorized engine distributor, dealer, or repair facility, or any company affiliated with John Deere be liable for incidental or consequential damage.

## Introduction

### JOHN DEERE'S WARRANTY RESPONSIBILITY:

Where a warrantable condition exists, John Deere will repair or replace, as it elects, your off-road diesel engine at no cost to you, including diagnosis, parts or labor. Warranty coverage is subject to the limitations and exclusions set forth herein. The off-road diesel engine is warranted for a period of five years from the date the engine is delivered to an ultimate purchaser or 3,000 hours of operation, whichever occurs first. The following are emissions-related parts:

#### Air Induction System

- Intake manifold
- Turbocharger
- Charge air cooler

#### Fuel Metering system

- Fuel injection system

#### Exhaust Gas Recirculation

- EGR valve

#### Catalyst or Thermal Reactor Systems

- Catalytic converter
- Exhaust manifold

#### Emission control labels

#### Particulate Controls

- Any device used to capture particulate emissions
- Any device used in the regeneration of the capturing system
- Enclosures and manifolding
- Smoke Puff Limiters

#### Positive Crankcase Ventilation (PCV) System

- PCV valve
- Oil filler cap

#### Advanced Oxides of Nitrogen (NOx) Controls

- NOx absorbers and catalysts

#### SCR systems and urea containers/dispensing systems

#### Miscellaneous Items used in Above Systems

- Electronic control units, sensors, actuators, wiring harnesses, hoses, connectors, clamps, fittings, gasket, mounting hardware

Any warranted emissions-related part scheduled for replacement as required maintenance is warranted by John Deere for the period of time prior to the first scheduled replacement point for the part. Any warranted emissions-related part not scheduled for replacement as required maintenance or scheduled only for regular inspection is warranted by John Deere for the stated warranty period.

### OWNER'S WARRANTY RESPONSIBILITIES:

As the off-road diesel engine owner you are responsible for the performance of the required maintenance listed in your Operator's Manual. John Deere recommends that the owner retain all receipts covering maintenance on the off-road diesel engine, but John Deere cannot deny warranty solely for the lack of receipts or for the owner's failure to ensure the performance of all scheduled maintenance. However, as the off-road diesel engine owner, you should be aware that John Deere may deny you warranty coverage if your off-road diesel engine or a part has failed due to abuse, neglect, improper maintenance or unapproved modifications.

The off-road diesel engine is designed to operate on diesel fuel as specified in the Fuels, Lubricants and Coolants section in the Operators Manual. Use of any other fuel may result in the engine no longer operating in compliance with applicable emissions requirements.

The owner is responsible for initiating the warranty process, and should present the machine to the nearest authorized John Deere dealer as soon as a problem is suspected. The warranty repairs should be completed by the authorized John Deere dealer as quickly as possible.

Emissions regulations require the customer to bring the unit to an authorized servicing dealer when warranty service is required. As a result, John Deere is NOT liable for travel or mileage on emissions warranty service calls.

Emission\_CI\_CARB (14Apr20)

Continued on next page

DX,EMISSIONS,CARB -19-26AUG20-6/8

**Emissions Control Warranty Statement 2022 through 2024**

DXLOGOV1 —UN—28APR09



**JOHN DEERE**

**CALIFORNIA EMISSIONS CONTROL WARRANTY STATEMENT  
YOUR WARRANTY RIGHTS AND OBLIGATIONS**

To determine if the John Deere engine qualifies for the additional warranties set forth below, look for the "Emission Control Information" label located on the engine. If the engine is operated in the United States or Canada and the engine label states: "This engine complies with US EPA regulations for nonroad and stationary diesel engines", or "This engine complies with US EPA regulations for stationary emergency diesel engines", refer to the "U.S. and Canada Emission Control Warranty Statement." If the engine is operated in California, and the engine label states: "This engine complies with US EPA and California regulations for nonroad/off-road diesel engines" also refer to the "California Emissions Control Warranty Statement."

Warranties stated on this certificate refer only to emissions-related parts and components of your engine. The complete engine warranty, less emission-related parts and components, is provided separately. If you have any questions about your warranty rights and responsibilities, you should contact John Deere at 1-319-292-5400.

**CALIFORNIA EMISSIONS CONTROL WARRANTY STATEMENT:**

The California Air Resources Board (CARB) is pleased to explain the emission-control system warranty on 2022 through 2024 off-road diesel engines. In California, new off-road engines must be designed, built and equipped to meet the State's stringent anti-smog standards. John Deere must warrant the emission control system on your engine for the periods of time listed below provided there has been no abuse, neglect or improper maintenance of your engine.

Your emission control system may include parts such as the fuel injection system and the air induction system. Also included may be hoses, belts, connectors and other emission-related assemblies.

John Deere warrants to the ultimate purchaser and each subsequent purchaser that this off-road diesel engine was designed, built, and equipped so as to conform at the time of sale with all applicable regulations adopted by CARB. John Deere warrants that this engine is free from defects in materials and workmanship which would cause the failure of emissions warranted parts to be identical in all material respects to the part as described in John Deere's application for certification for a period of five years from the date the engine is delivered to an ultimate purchaser or 3,000 hours of operation, whichever occurs first. This applies to all engines rated at 19 kW and greater. In the absence of a device to measure hours of use, the engine shall be warranted for a period of five years.

**EMISSIONS WARRANTY EXCLUSIONS:**

John Deere may deny warranty claims for failures caused by the use of an add-on or modified part which has not been exempted by the CARB. A modified part is an aftermarket part intended to replace an original emission-related part which is not functionally identical in all respects and which in any way affects emissions. An add-on part is any aftermarket part which is not a modified part or a replacement part.

In no event will John Deere, any authorized engine distributor, dealer, or repair facility, or any company affiliated with John Deere be liable for incidental or consequential damage.

Continued on next page

DX,EMISSIONS,CARB -19-26AUG20-7/8

RC32768 —UN—19AUG20

## Introduction

### JOHN DEERE'S WARRANTY RESPONSIBILITY:

Where a warrantable condition exists, John Deere will repair or replace, as it elects, your off-road diesel engine at no cost to you, including diagnosis, parts or labor. Warranty coverage is subject to the limitations and exclusions set forth herein. The off-road diesel engine is warranted for a period of five years from the date the engine is delivered to an ultimate purchaser or 3,000 hours of operation, whichever occurs first. The following are emissions-related parts:

#### Air Induction System

- Intake manifold
- Turbocharger
- Charge air cooler

#### Fuel Metering system

- Fuel injection system

#### Exhaust Gas Recirculation

- EGR valve

#### Catalyst or Thermal Reactor Systems

- Catalytic converter
- Exhaust manifold

#### Emission control labels

#### Particulate Controls

- Any device used to capture particulate emissions
- Any device used in the regeneration of the capturing system
- Enclosures and manifolding
- Smoke Puff Limiters

#### Positive Crankcase Ventilation (PCV) System

- PCV valve
- Oil filler cap

#### Advanced Oxides of Nitrogen (NOx) Controls

- NOx absorbers and catalysts

SCR systems and urea containers/dispensing systems

#### Miscellaneous Items used in Above Systems

- Electronic control units, sensors, actuators, wiring harnesses, hoses, connectors, clamps, fittings, gasket, mounting hardware

Any warranted emissions-related part scheduled for replacement as required maintenance is warranted by John Deere for the period of time prior to the first scheduled replacement point for the part. Any warranted emissions-related part not scheduled for replacement as required maintenance or scheduled only for regular inspection is warranted by John Deere for the stated warranty period.

### OWNER'S WARRANTY RESPONSIBILITIES:

As the off-road diesel engine owner you are responsible for the performance of the required maintenance listed in your Operator's Manual. John Deere recommends that the owner retain all receipts covering maintenance on the off-road diesel engine, but John Deere cannot deny warranty solely for the lack of receipts or for the owner's failure to ensure the performance of all scheduled maintenance. However, as the off-road diesel engine owner, you should be aware that John Deere may deny you warranty coverage if your off-road diesel engine or a part has failed due to abuse, neglect, improper maintenance or unapproved modifications.

The off-road diesel engine is designed to operate on diesel fuel as specified in the Fuels, Lubricants and Coolants section in the Operators Manual. Use of any other fuel may result in the engine no longer operating in compliance with applicable emissions requirements.

The owner is responsible for initiating the warranty process, and should present the machine to the nearest authorized John Deere dealer as soon as a problem is suspected. The warranty repairs should be completed by the authorized John Deere dealer as quickly as possible.

Emissions regulations require the customer to bring the unit to an authorized servicing dealer when warranty service is required. As a result, John Deere is NOT liable for travel or mileage on emissions warranty service calls.

Emission\_CI\_CARB (14Apr20)

DX,EMISSIONS,CARB -19-26AUG20-8/8

RG32759—UN—19AUG20

### Technical Information Feedback Form

We need your help to continually improve our technical publications. Please copy this page and FAX or mail your comments, ideas and improvements.

**SEND TO:** John Deere Dubuque Works  
18600 South John Deere Road  
Attn: Publications, Dept. 324  
Dubuque, IA 52004-0538  
USA

**FAX NUMBER:** 1-563-589-5800 (USA)

Publication Number: \_\_\_\_\_

Page Number: \_\_\_\_\_

Ideas, Comments: \_\_\_\_\_  
\_\_\_\_\_  
\_\_\_\_\_  
\_\_\_\_\_  
\_\_\_\_\_  
\_\_\_\_\_  
\_\_\_\_\_  
\_\_\_\_\_  
\_\_\_\_\_  
\_\_\_\_\_  
\_\_\_\_\_  
\_\_\_\_\_  
\_\_\_\_\_  
\_\_\_\_\_

Name: \_\_\_\_\_

Phone: \_\_\_\_\_

Email Address: \_\_\_\_\_

**THANK YOU!**



# Contents

Page	Page
<b>Safety—Safety and Operator Conveniences</b>	
Safety and Operator Convenience Features .....	1-1-1
<b>Safety—General Precautions</b>	
Recognize Safety Information .....	1-2-1
Follow Safety Instructions .....	1-2-1
Operate Only If Qualified .....	1-2-1
Wear Protective Equipment .....	1-2-2
Avoid Unauthorized Machine Modifications .....	1-2-2
Inspect Machine .....	1-2-2
Stay Clear of Moving Parts .....	1-2-2
Avoid High-Pressure Fluids .....	1-2-3
Avoid High-Pressure Oils .....	1-2-3
Work In Ventilated Area .....	1-2-4
Prevent Fires .....	1-2-4
Prevent Battery Explosions .....	1-2-5
Handle Chemical Products Safely .....	1-2-5
Decommissioning — Proper Recycling and Disposal of Fluids and Components .....	1-2-6
Prepare for Emergencies .....	1-2-6
Clean Debris from Machine .....	1-2-7
<b>Safety—Operating Precautions</b>	
Use Steps and Handholds Correctly .....	1-3-1
Start Only From Operator's Seat .....	1-3-1
Use and Maintain Seat Belt .....	1-3-1
Prevent Unintended Machine Movement .....	1-3-1
Avoid Work Site Hazards .....	1-3-2
Keep Riders Off Machine .....	1-3-2
Avoid Backover Accidents .....	1-3-3
Avoid Machine Tip Over and Machine Damage .....	1-3-3
Operating on Slopes .....	1-3-3
Operating Or Traveling On Public Roads .....	1-3-4
Inspect and Maintain ROPS .....	1-3-4
Add and Operate Attachments Safely .....	1-3-4
<b>Safety—Maintenance Precautions</b>	
Park and Prepare for Service Safely .....	1-4-1
Service Cooling System Safely .....	1-4-1
Remove Paint Before Welding or Heating .....	1-4-2
Make Welding Repairs Safely .....	1-4-2
Drive Metal Pins Safely .....	1-4-2
Handle Cab Door Safely .....	1-4-3
<b>Safety—Safety Signs</b>	
Replace Safety Signs .....	1-5-1
Safety Signs .....	1-5-2
<b>Operation—Operator's Station</b>	
Machine Control .....	2-1-1
Control Panel .....	2-1-3
Control Panel Functions .....	2-1-4
Engagement and Monitor Unit Operation .....	2-1-6
Engagement and Monitor Unit Display Messages .....	2-1-8
Anti-Theft Security System Operation—If Equipped .....	2-1-9
Reading Diagnostic Trouble Codes .....	2-1-12
Gauges and Indicator Lights .....	2-1-12
Gauge and Indicator Light Functions .....	2-1-13
Auto Shutdown With Alarm .....	2-1-13
Interlocking Seat Bar .....	2-1-14
Cab Door—If Equipped .....	2-1-14
Opening Side Windows—If Equipped .....	2-1-17
Top Window .....	2-1-18
Rear Window (Alternative Exit) .....	2-1-18
Fire Extinguisher Location .....	2-1-18
12-Volt Power Outlet .....	2-1-19
Heating/Defrosting Controls—If Equipped .....	2-1-19
Air Conditioning Controls—If Equipped .....	2-1-19
Seat Adjustment .....	2-1-20
Dome Light .....	2-1-21
Horn Button—If Equipped .....	2-1-21
Beacon—If Equipped .....	2-1-21
<b>Operation—Operating the Machine</b>	
Before Starting Work .....	2-2-1
Operator's Daily Machine Check Before Starting .....	2-2-1
Entering and Exiting Skid Steer .....	2-2-2
Engine Break-In Period .....	2-2-3
Starting the Engine .....	2-2-3
Cold Weather Starting .....	2-2-4
Engine Block Heater—If Equipped .....	2-2-4
Engine Speed Control .....	2-2-5
Stopping the Engine .....	2-2-5
Boom Lock .....	2-2-6
Boom Release .....	2-2-7
Steering—Manual Controls .....	2-2-8

Continued on next page

*Original Instructions. All information, illustrations and specifications in this manual are based on the latest information available at the time of publication. The right is reserved to make changes at any time without notice.*

COPYRIGHT © 2022  
DEERE & COMPANY  
Moline, Illinois  
All rights reserved.  
A John Deere ILLUSTRATION™ Manual  
Previous Editions  
Copyright © 2009,2010,2011,2013, 2018

Page	Page		
Operating Boom—Manual Controls.....	2-2-9	Hydrostatic Planetary Gear Case Oil.....	3-1-14
Operating Bucket—Manual Controls.....	2-2-11	Multipurpose Extreme Pressure (EP)	
Steering—EH Controls.....	2-2-12	Grease.....	3-1-14
Operating Boom—EH Controls.....	2-2-14	<b>Maintenance—Periodic Maintenance</b>	
Operating Bucket—EH Controls.....	2-2-16	Service Machine at Specified Intervals.....	3-2-1
Operating Auxiliary Hydraulics.....	2-2-18	Fuel Tank.....	3-2-1
Hydraulic System Pressure		Raising and Blocking Machine.....	3-2-2
Release—EH Controls.....	2-2-21	Raising Operator's Station.....	3-2-3
Hydraulic System Pressure		Opening and Closing Engine Cover.....	3-2-4
Release—Manual Controls.....	2-2-21	Engine Side Panels—Remove and Install.....	3-2-4
Using Attachment Mounting		Footwell Removal.....	3-2-6
System—Quik-Tatch™.....	2-2-23	Fluid Analysis Program Test Kits and	
Self Leveling Hydraulics—If Equipped.....	2-2-25	3-Way Coolant Test Kit.....	3-2-6
High Flow Hydraulics—If Equipped.....	2-2-25	Service Intervals.....	3-2-7
Creep Mode Operation—If Equipped.....	2-2-26	Required Parts.....	3-2-8
Auto Idle Operation.....	2-2-27	<b>Maintenance—As Required</b>	
Boom and Bucket Speed Settings—If		Inspect and Clean Cooling Package.....	3-3-1
Equipped.....	2-2-27	Check and Clean Cab Fresh Air and	
Loading Machine On a Trailer.....	2-2-28	Recirculation Air Filters—If Equipped.....	3-3-2
<b>Operation—Track Information</b>		Inspect and Clean Fuel Tank Vent Tube.....	3-3-2
Undercarriage Component Identification.....	2-3-1	Check Coolant.....	3-3-3
Rubber Track Structure.....	2-3-2	<b>Maintenance—Every 10 Hours or Daily</b>	
Rubber Track Usage.....	2-3-3	Check Engine Oil Level.....	3-4-1
Sprocket Teeth Wear.....	2-3-4	Check Hydraulic Reservoir Oil Level.....	3-4-1
Normal Break-In.....	2-3-5	Check Coolant Level.....	3-4-2
Normal Track Wear in Dirt Conditions.....	2-3-5	Check and Drain Water Separator Fuel Filter.....	3-4-2
Rubber Track—Types of Damage.....	2-3-6	<b>Maintenance—Initial Service - 50 Hours</b>	
<b>Maintenance—Machine</b>		Change Hydrostatic Planetary Gear	
Diesel Fuel.....	3-1-1	Case Oil (S.N. 192142—).....	3-5-1
Lubricity of Diesel Fuel.....	3-1-2	<b>Maintenance—Every 50 Hours</b>	
Handling and Storing Diesel Fuel.....	3-1-2	Lubricate Boom Linkage, Cylinder	
Biodiesel Fuel.....	3-1-3	Pivot Points, and Quik-Tatch™ Linkage.....	3-6-1
Testing Diesel Fuel.....	3-1-4	Check Track Tension.....	3-6-2
Minimizing the Effect of Cold Weather		<b>Maintenance—Initial Service - 250 Hours</b>	
on Diesel Engines.....	3-1-5	Change Engine Oil and Replace Filter.....	3-7-1
Operating in Cold Temperature Climates.....	3-1-6	Change Hydrostatic Planetary Gear	
Alternative and Synthetic Lubricants.....	3-1-6	Case Oil (S.N. —192141).....	3-7-2
Diesel Engine Break-In Oil.....	3-1-6	<b>Maintenance—Every 250 Hours</b>	
Diesel Engine Oil—Interim Tier 4 and		Take Engine Oil Sample.....	3-8-1
Stage III B Engines.....	3-1-7	<b>Maintenance—Every 500 Hours</b>	
Engine Oil and Filter Service Intervals		Change Engine Oil and Replace Filter.....	3-9-1
— Interim Tier 4, Final Tier 4, Stage		Replace Fuel Filter and Water Separator.....	3-9-2
IIIB, Stage IV, and Stage V Engines.....	3-1-8	Replace In-Line Fuel Filter.....	3-9-3
Diesel Engine Coolant (engine without		Replace Primary Engine Air Filter.....	3-9-4
wet sleeve cylinder liners).....	3-1-9	Replace Hydraulic Oil Reservoir Breather.....	3-9-5
Drain Intervals for Diesel Engine Coolant.....	3-1-10	Replace Hydraulic Oil Filter.....	3-9-5
John Deere COOL-GARD™ II Coolant			
Extender.....	3-1-10		
Supplemental Coolant Additives.....	3-1-11		
Operating in Warm Temperature Climates.....	3-1-11		
Additional Information About Diesel			
Engine Coolants and John Deere			
COOL-GARD™ II Coolant Extender.....	3-1-12		
Testing Diesel Engine Coolant.....	3-1-13		
Hydraulic and Hydrostatic Oil.....	3-1-13		

Continued on next page

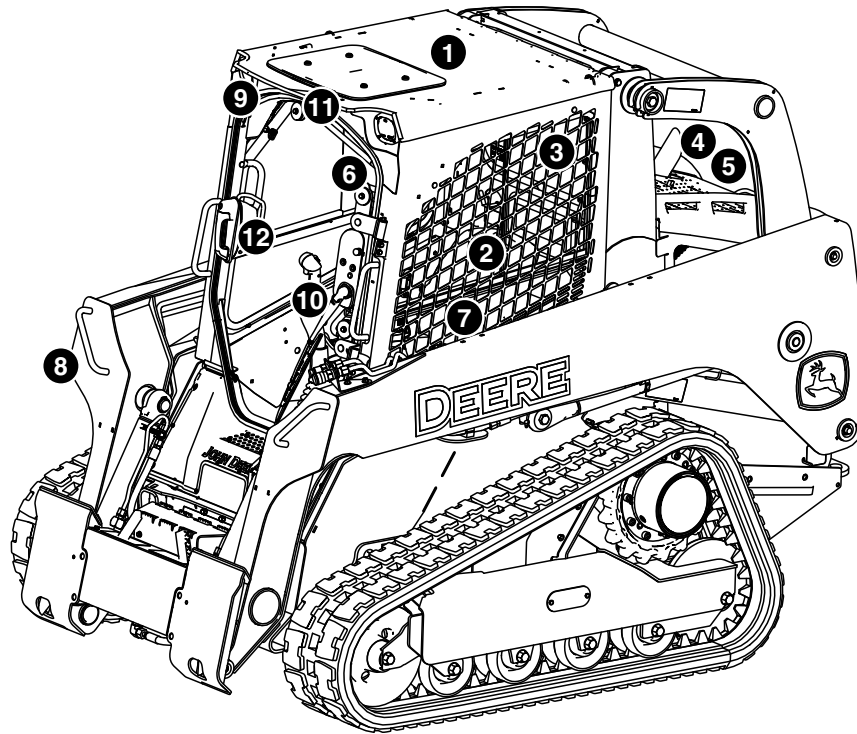


Page	Page
Change Hydrostatic Planetary Gear	Monthly Storage Procedure.....4-4-2
Case Oil (S.N. —192141) .....3-9-6	
Lubricate Steering Linkage—If Equipped .....3-9-6	
Drain Fuel Tank Sump .....3-9-7	
Take Fluid Samples .....3-9-7	
<b>Maintenance—Every 1000 Hours</b>	
Check Coolant .....3-10-1	
Replace Secondary Engine Air Filter .....3-10-2	
Change Hydraulic Reservoir Oil .....3-10-3	
Change Hydrostatic Planetary Gear	
Case Oil (S.N. 192142—) .....3-10-4	
<b>Maintenance—Every 6000 Hours</b>	
Drain Cooling System .....3-11-1	
Flush Cooling System .....3-11-2	
Fill Cooling System .....3-11-2	
<b>Miscellaneous—Machine</b>	
Bleed Fuel System .....4-1-1	
Do Not Service Control Valves,	
Cylinders, Pumps, or Motors .....4-1-1	
Precautions for Alternator and Regulator .....4-1-1	
Check Battery Electrolyte Level and Terminals ..4-1-2	
Handling, Checking, and Servicing	
Batteries Carefully .....4-1-4	
Using Battery Charger .....4-1-5	
Using Booster Batteries—12-Volt System .....4-1-7	
Removing Battery .....4-1-8	
Replacing Battery .....4-1-8	
Welding On Machine .....4-1-9	
Welding Near Electronic Control Units .....4-1-9	
Keep Electronic Control Unit	
Connectors Clean .....4-1-9	
Remove and Install Halogen Bulbs .....4-1-10	
Adding Rear Counterweights .....4-1-11	
Replacing Alternator Belt .....4-1-12	
Adjusting Boom and Bucket	
Linkage—Hands Only Machines .....4-1-12	
Adjusting Pedal Angle—Hand and	
Foot Machines .....4-1-13	
Replacing Fuses .....4-1-13	
Replacing Glow Plug Fuse .....4-1-14	
Hardware Torque Specifications .....4-1-15	
Unified Inch Bolt and Screw Torque Values .....4-1-16	
Metric Bolt and Screw Torque Values .....4-1-17	
<b>Miscellaneous—Operational Checkout</b>	
Operational Checkout .....4-2-1	
<b>Miscellaneous—Troubleshooting</b>	
Troubleshooting Procedure .....4-3-1	
Engine .....4-3-2	
Electrical System .....4-3-3	
Hydraulic System .....4-3-4	
<b>Miscellaneous—Machine Storage</b>	
Prepare Machine for Storage .....4-4-1	
	<b>Miscellaneous—Machine Numbers</b>
	Record Product Identification Number (PIN) .....4-5-1
	Record Engine Serial Number .....4-5-1
	Keep Proof of Ownership .....4-5-1
	Keep Machines Secure .....4-5-1
	<b>Miscellaneous—Specifications</b>
	329D Machine Dimensions .....4-6-1
	329D Machine Specifications .....4-6-2
	333D Machine Dimensions .....4-6-3
	333D Machine Specifications .....4-6-4
	329D and 333D Drain and Refill Capacities .....4-6-5
	Rated Operating Capacity .....4-6-5
	Pallet Fork Lift Chart .....4-6-5



# Safety—Safety and Operator Conveniences

## Safety and Operator Convenience Features



TX1063621

Please remember that the operator is the key to preventing accidents.

**1. ROPS/FOPS Protection.** Structures designed to help protect the operator are certified to ISO and OSHA. Enclosure also deflects sun and rain.

**2. Window Guarding.** Side screens prevent contact with a moving boom.

**3. Secondary Exit.** The rear window provides an exit path if the front door is blocked.

**4. Bypass Start Protection.** Shielding over the starter terminals helps prevent dangerous bypass starting.

**5. Engine Fan Guard.** Enclosing the fan fully inside the cooling package helps prevent contact with rotating fan blades.

**6. Loader Boom Service Lock.** A mechanical lock is provided for working on or around this machine with the boom raised.

**7. Seat Belt with Automatic Retractor.** Retractor helps protect the operator and keeps the belt and operator's station clean. A convenient integrated seat and shoulder belt system is also provided.

**8. Handholds.** Conveniently placed handholds make it easy to enter or exit the operator's station.

**9. Independent Parking Brake.** Electrically controlled parking brake engages whenever the engine is stopped.

**10. Cab with Air Conditioner, Heater, and Defroster.** Options are available.

**11. Rearview Mirror.** For operator convenience, a rearview mirror is available.

**12. Swing Out Front Door.** A sealed swing out front door is available. It allows the cab to be pressurized. Also provides easy access into cab and more headroom inside cab.

OUT4001.000046F -19-28OCT09-1/1

TX1063621 — JUN — 02NOV09

# Safety—General Precautions

## Recognize Safety Information

**This is the safety alert symbol. When you see this symbol on your machine or in this manual, be alert for the potential of personal injury.**

Follow the precautions and safe operating practices highlighted by this symbol.

A signal word — DANGER, WARNING, or CAUTION — is used with the safety alert symbol. DANGER identifies the most serious hazards.

On your machine, DANGER signs are red in color, WARNING signs are orange, and CAUTION signs are yellow. DANGER and WARNING signs are located near specific hazards. General precautions are on CAUTION labels.



TX,RECOGNIZE -19-28JUN10-1/1

T133555 —UN—15APR13

T133588 —19—28AUG00

## Follow Safety Instructions

Carefully read all safety messages in this manual and on your machine safety signs. Keep safety signs in good condition. Replace missing or damaged safety signs. Use this operator's manual for correct safety sign placement. Be sure new equipment components and repair parts include the current safety signs. Replacement safety signs are available from your John Deere dealer.

There can be additional safety information contained on parts and components sourced from suppliers that is not reproduced in this operator's manual.

Learn how to operate the machine and how to use controls properly. Do not let anyone operate without instruction.

Keep your machine in proper working condition. Unauthorized modifications to the machine may impair the function and/or safety and affect machine life.



If you do not understand any part of this manual and need assistance, contact your John Deere dealer.

VD76477,0000510 -19-01JUN12-1/1

TS201 —UN—15APR13

## Operate Only If Qualified

Do not operate this machine unless the operator's manual has been read carefully, and you have been qualified by supervised training and instruction.

Operator should be familiar with the job site and surroundings before operating. Try all controls and

machine functions with the machine in an open area before starting to work.

Know and observe all safety rules that may apply to every work situation and work site.

TX03679,00016FA -19-03JAN07-1/1

This as a preview PDF file from [best-manuals.com](https://best-manuals.com)



Download full PDF manual at [best-manuals.com](https://best-manuals.com)