

SERVICE MANUAL

Workmaster™ 25S Tier 4B (final) Compact Tractor

Part number 51421067
1st edition English
April 2018





SERVICE MANUAL

Workmaster™ 25S 25 Hp, without cab

Contents

INTRODUCTION

Engine.....	10
[10.001] Engine and crankcase	10.1
[10.216] Fuel tanks	10.2
[10.206] Fuel filters	10.3
[10.202] Air cleaners and lines	10.4
[10.254] Intake and exhaust manifolds and muffler	10.5
[10.400] Engine cooling system	10.6
[10.414] Fan and drive	10.7
Four-Wheel Drive (4WD) system	23
[23.314] Drive shaft.....	23.1
Front axle system	25
[25.100] Powered front axle	25.1
[25.102] Front bevel gear set and differential	25.2
[25.108] Final drive hub, steering knuckles, and shafts	25.3
Rear axle system.....	27
[27.100] Powered rear axle.....	27.1
[27.106] Rear bevel gear set and differential.....	27.2
[27.120] Planetary and final drives	27.3
Hydrostatic drive.....	29
[29.200] Mechanical control	29.1
[29.218] Pump and motor components.....	29.2
[29.202] Hydrostatic transmission	29.3
Power Take-Off (PTO)	31
[31.101] Rear mechanical control	31.1
[31.104] Rear electro-hydraulic control.....	31.2

[31.110] One-speed rear Power Take-Off (PTO)	31.3
Brakes and controls	33
[33.120] Mechanical service brakes	33.1
[33.110] Parking brake or parking lock	33.2
Hydraulic systems.....	35
[35.000] Hydraulic systems.....	35.1
[35.300] Reservoir, cooler, and filters.....	35.2
[35.104] Fixed displacement pump.....	35.3
[35.350] Safety and main relief valves	35.4
[35.114] Three-point hitch control valve	35.5
[35.355] Hydraulic hand control	35.6
[35.726] Excavator and backhoe hydraulic controls.....	35.7
Hitches, drawbars, and implement couplings.....	37
[37.120] Rear three-point hitch linkage.....	37.1
Steering.....	41
[41.101] Steering control	41.1
[41.106] Tie rods.....	41.2
[41.206] Pump	41.3
[41.216] Cylinders	41.4
Wheels	44
[44.511] Front wheels.....	44.1
[44.520] Rear wheels	44.2
Electrical systems	55
[55.000] Electrical system	55.1
[55.100] Harnesses and connectors.....	55.2
[55.201] Engine starting system	55.3
[55.301] Alternator.....	55.4

[55.302] Battery.....	55.5
[55.202] Cold start aid	55.6
[55.011] Fuel tank system	55.7
[55.010] Fuel injection system	55.8
[55.012] Engine cooling system	55.9
[55.013] Engine oil system	55.10
[55.610] Ground speed control	55.11
[55.522] Cab Power Take-Off (PTO) controls	55.12
[55.031] Parking brake electrical system	55.13
[55.404] External lighting	55.14
[55.405] External lighting switches and relays	55.15
[55.510] Cab or platform harnesses and connectors.....	55.16
[55.408] Warning indicators, alarms, and instruments	55.17
[55.027] Cruise control	55.18
Platform, cab, bodywork, and decals	90
[90.114] Operator protections	90.1
[90.120] Mechanically-adjusted operator seat.....	90.2
[90.100] Engine hood and panels	90.3



INTRODUCTION

Contents

INTRODUCTION

Foreword - Important notice regarding equipment servicing (*)	3
Safety rules (*)	4
Safety rules - Ecology and the environment (*)	5
Torque - Standard torque data for hydraulic connections (*)	6
Basic instructions - Shop and assembly (*)	13
General specification (*)	15
General specification (*)	19
Consumables (*)	20
Dimension (*)	21
Product identification (*)	24
Product identification machine orientation (*)	25

(*) See content for specific models

Foreword - Important notice regarding equipment servicing

Workmaster™ 25S 25 Hp, without cab

NA

All repair and maintenance work listed in this manual must be carried out only by qualified dealership personnel, strictly complying with the instructions given, and using, whenever possible, the special tools.

Anyone who performs repair and maintenance operations without complying with the procedures provided herein shall be responsible for any subsequent damages.

The manufacturer and all the organizations of its distribution chain, including - without limitation - national, regional, or local dealers, reject any responsibility for damages caused by parts and/or components not approved by the manufacturer, including those used for the servicing or repair of the product manufactured or marketed by the manufacturer. In any case, no warranty is given or attributed on the product manufactured or marketed by the manufacturer in case of damages caused by parts and/or components not approved by the manufacturer.

The manufacturer reserves the right to make improvements in design and changes in specifications at any time without notice and without incurring any obligation to install them on units previously sold. Specifications, descriptions, and illustrative material herein are as accurate as known at time of publication but are subject to change without notice.

In case of questions, refer to your NEW HOLLAND Sales and Service Networks.

Safety rules

Workmaster™ 25S 25 Hp, without cab

NA


Personal safety





This is the safety alert symbol. It is used to alert you to potential personal injury hazards. Obey all safety messages that follow this symbol to avoid possible death or injury.

Throughout this manual you will find the signal words DANGER, WARNING, and CAUTION followed by special instructions. These precautions are intended for the personal safety of you and those working with you.

Read and understand all the safety messages in this manual before you operate or service the machine.

 DANGER indicates a hazardous situation that, if not avoided, will result in death or serious injury.

 WARNING indicates a hazardous situation that, if not avoided, could result in death or serious injury.

 CAUTION indicates a hazardous situation that, if not avoided, could result in minor or moderate injury.

FAILURE TO FOLLOW DANGER, WARNING, AND CAUTION MESSAGES COULD RESULT IN DEATH OR SERIOUS INJURY.

Machine safety

NOTICE: Notice indicates a situation that, if not avoided, could result in machine or property damage.

Throughout this manual you will find the signal word Notice followed by special instructions to prevent machine or property damage. The word Notice is used to address practices not related to personal safety.

Information

NOTE: Note indicates additional information that clarifies steps, procedures, or other information in this manual.

Throughout this manual you will find the word Note followed by additional information about a step, procedure, or other information in the manual. The word Note is not intended to address personal safety or property damage.

Safety rules - Ecology and the environment

Workmaster™ 25S 25 Hp, without cab

NA

Soil, air, and water quality is important for all industries and life in general. When legislation does not yet rule the treatment of some of the substances that advanced technology requires, sound judgment should govern the use and disposal of products of a chemical and petrochemical nature.

Familiarize yourself with the relative legislation applicable to your country, and make sure that you understand this legislation. Where no legislation exists, obtain information from suppliers of oils, filters, batteries, fuels, anti-freeze, cleaning agents, etc., with regard to the effect of these substances on man and nature and how to safely store, use, and dispose of these substances.

Helpful hints

- Avoid the use of cans or other inappropriate pressurized fuel delivery systems to fill tanks. Such delivery systems may cause considerable spillage.
- In general, avoid skin contact with all fuels, oils, acids, solvents, etc. Most of these products contain substances that may be harmful to your health.
- Modern oils contain additives. Do not burn contaminated fuels and or waste oils in ordinary heating systems.
- Avoid spillage when you drain fluids such as used engine coolant mixtures, engine oil, hydraulic fluid, brake fluid, etc. Do not mix drained brake fluids or fuels with lubricants. Store all drained fluids safely until you can dispose of the fluids in a proper way that complies with all local legislation and available resources.
- Do not allow coolant mixtures to get into the soil. Collect and dispose of coolant mixtures properly.
- The air-conditioning system contains gases that should not be released into the atmosphere. Consult an air-conditioning specialist or use a special extractor to recharge the system properly.
- Repair any leaks or defects in the engine cooling system or hydraulic system immediately.
- Do not increase the pressure in a pressurized circuit as this may lead to a component failure.
- Protect hoses during welding. Penetrating weld splatter may burn a hole or weaken hoses, allowing the loss of oils, coolant, etc.

Battery recycling

Batteries and electric accumulators contain several substances that can have a harmful effect on the environment if the batteries are not properly recycled after use. Improper disposal of batteries can contaminate the soil, groundwater, and waterways. NEW HOLLAND strongly recommends that you return all used batteries to a NEW HOLLAND dealer, who will dispose of the used batteries or recycle the used batteries properly. In some countries, this is a legal requirement.



Mandatory battery recycling

NOTE: *The following requirements are mandatory in Brazil.*

Batteries are made of lead plates and a sulfuric acid solution. Because batteries contain heavy metals such as lead, CONAMA Resolution 401/2008 requires you to return all used batteries to the battery dealer when you replace any batteries. Do not dispose of batteries in your household garbage.

Points of sale are obliged to:

- Accept the return of your used batteries
- Store the returned batteries in a suitable location
- Send the returned batteries to the battery manufacturer for recycling

Torque - Standard torque data for hydraulic connections

Workmaster™ 25S 25 Hp, without cab

NA

General information

- Hydraulic connections require a minimum assembly torque in order to provide zero leakage at rated pressure with adequate fatigue resistance. Over-torquing of a hydraulic connection can also lead to leakage or failure. For some connections, NEW HOLLAND requires a different torque value than is listed in the ISO and SAE standards.
- The torque values in this document should be used whenever possible or applicable.

NOTICE: Always follow the instructions in this manual for specific torque values when you service components. The information in this section is for general guidance only when a procedure contains no specific torque value.

Tolerance

- The tolerance for all torque values is $\pm 10\%$. This tolerance must include all assembly variation, not only the torque wrench repeatability.

Lubrication

Application of grease or other lubricants to hydraulic connectors should be avoided. If clean hydraulic oil is already on the connection, it is not required to remove the oil. Generally, application of grease:

- May cause a significant change in the torque required to properly tighten the connection.
- May reduce the connection's resistance to vibration.
- Excessive grease may displace an elastomer seal during tightening.
- Grease extrusion when connection is tightened may be mistaken for leakage.

NEW HOLLAND products generally use O-Ring Boss (ORB) connectors that have Teflon™-coated O-rings, eliminating the need for O-ring lubrication during installation. For connections which are made into aluminum manifolds or with stainless steel connectors, it may be required to apply a lubricant to prevent galling.

Use of **LOCTITE®** and other thread-locking compounds is prohibited. These compounds:

- May cause a significant change in the torque required to properly tighten the connections.
- Reduce the serviceability of the joint.
- May prevent the O-ring from properly sealing if the compound gets on the O-ring.

INTRODUCTION

Torque values for metric O-Ring Boss (ORB) port connections

Metric thread	S-Series *		L-Series **	
	Ferrous N·m (lb ft) ± 10%	Non-Ferrous N·m (lb ft) ± 10%	Ferrous N·m (lb ft) ± 10%	Non-Ferrous N·m (lb ft) ± 10%
M8 x 1	10.5 (7.7)	6.3 (4.6)	8.5 (6.3)	5 (3.7)
M10 x 1	21 (15.5)	12.5 (9.2)	15.5 (11.4)	9.3 (6.9)
M12 x 1.5	37 (27.3)	22 (16.2)	27 (19.9)	16 (11.8)
M14 x 1.5	47 (34.7)	28 (20.7)	37 (27.3)	22 (16.2)
M16 x 1.5	58 (42.8)	35 (25.8)	42 (31)	25 (18.4)
M18 x 1.5	74 (54.6)	44 (32.5)	47 (34.7)	28 (20.7)
M22 x 1.5	105 (77.4)	63 (46.5)	63 (46.5)	38 (28)
M27 x 2	178 (131.3)	107 (78.9)	105 (77.4)	63 (46.5)
M30 x 2	225 (166)	135 (99.6)	136 (100.3)	82 (60.5)
M33 x 2	325 (239.7)	195 (143.8)	168 (123.9)	101 (74.5)
M42 x 2	345 (254.5)	207 (152.7)	220 (162.3)	132 (97.4)
M48 x 2	440 (324.5)	264 (194.7)	273 (201.4)	164 (121)
M60 x 2	525 (387.2)	315 (232.3)	330 (243.4)	198 (146)

* S-Series connectors are used with O-Ring Face Seals (ORFS).

** L-Series connectors are used with 37° flare.

Torque values for metric O-Ring Boss (ORB) port plugs

Metric thread	Ferrous		Non-ferrous
	Internal hex N·m (lb ft) ± 10%	External hex N·m (lb ft) ± 10%	N·m (lb ft) ± 10%
M8 x 1	8.5 (6.3)	10.5 (7.7)	6.3 (4.6)
M10 x 1	16 (11.8)	21 (15.5)	12.5 (9.2)
M12 x 1.5	23 (17)	37 (27.3)	22 (16.2)
M14 x 1.5	47 (34.7)	47 (34.7)	28 (20.7)
M16 x 1.5	58 (42.8)	58 (42.8)	35 (25.8)
M18 x 1.5	74 (54.6)	74 (54.6)	44 (32.5)
M22 x 1.5	105 (77.4)	105 (77.4)	63 (46.5)
M27 x 2	178 (131.3)	178 (131.3)	107 (78.9)
M30 x 2	225 (166)	225 (166)	135 (99.6)
M33 x 2	325 (239.7)	325 (239.7)	195 (143.8)
M42 x 2	345 (254.5)	345 (254.5)	207 (152.7)
M48 x 2	440 (324.5)	440 (324.5)	264 (194.7)
M60 x 2	525 (387.2)	525 (387.2)	315 (232.3)

INTRODUCTION

Torque values for port connections (British Standard Pipe Parallel (BSPP) thread ports and stud ends)

BSPP thread G- Gas; A- medium coarse threads	Metric tube Outside Diameter (OD) mm (in)		Ferrous		Non-Ferrous	
	S-Series *	L-Series **	S-Series N·m (lb ft) ± 10%	L-Series N·m (lb ft) ± 10%	S-Series N·m (lb ft) ± 10%	L-Series N·m (lb ft) ± 10%
G 1/8 A	–	6 (0.236)	–	21 (15.5)	–	12.5 (9.2)
G 1/4 A	6 (0.236) or 8 (0.315)	8 (0.315) or 10 (0.394)	63 (46.5)	53 (39.1)	38 (28)	32 (23.6)
G 3/8 A	10 (0.394) or 12 (0.472)	12 (0.472)	95 (70.1)	84 (62)	57 (42)	50 (36.9)
G 1/2 A	16 (0.630)	15 (0.591) or 18 (0.709)	136 (100.3)	105 (77.4)	82 (60.5)	63 (46.5)
G 3/4 A	20 (0.787)	22 (0.866)	210 (154.9)	210 (154.9)	126 (92.9)	126 (92.9)
G 1 A	25 (0.984)	28 (1.102)	400 (295)	400 (295)	240 (177)	240 (177)
G 1 1/4 A	30 (1.181)	35 (1.378)	525 (387.2)	525 (387.2)	315 (232.3)	315 (232.3)
G 1 1/2 A	38 (1.496)	42 (1.654)	660 (486.8)	660 (486.8)	396 (292.1)	396 (292.1)

* S-Series connectors are used with O-Ring Face Seals (ORFS).

** L-Series connectors are used with 37° flare.

Torque values for metric port connections (Metric face-seal ports and stud ends)

Metric thread	Metric tube Outside Diameter (OD) mm (in)		Ferrous		Non-Ferrous	
	S-Series *	L-Series **	S-Series N·m (lb ft) ± 10%	L-Series N·m (lb ft) ± 10%	S-Series N·m (lb ft) ± 10%	L-Series N·m (lb ft) ± 10%
M10 x 1	–	4 (0.157)	–	21 (15.5)	–	12.5 (9.2)
M12 x 1.5	4 (0.157)	6 (0.236)	47 (34.7)	32 (23.6)	28 (20.7)	19 (14)
M14 x 1.5	5 (0.197)	7 (0.276)	63 (46.5)	53 (39.1)	38 (28)	32 (23.6)
M16 x 1.5	7 (0.276)	9 (0.354)	84 (62)	63 (46.5)	50 (36.9)	38 (28)
M18 x 1.5	8 (0.315)	11 (0.433)	105 (77.4)	84 (62)	63 (46.5)	50 (36.9)
M20 x 1.5	10 (0.394)	–	147 (108.4)	–	88 (64.9)	–
M22 x 1.5	12 (0.472)	14 (0.551)	158 (116.5)	147 (108.4)	95 (70.1)	88 (64.9)
M26 x 1.5	–	18 (0.709)	–	210 (154.9)	–	126 (92.9)
M27 x 1.2	16 (0.630)	–	210 (154.9)	–	126 (92.9)	–
M33 x 2	20 (0.787)	23 (0.906)	400 (295)	400 (295)	240 (177)	240 (177)
M42 x 2	25 (0.984)	30 (1.181)	525 (387.2)	525 (387.2)	315 (232.3)	315 (232.3)
M48 x 2	32 (1.260)	36 (1.417)	630 (464.7)	630 (464.7)	396 (292.1)	396 (292.1)

* S-Series connectors are used with O-Ring Face Seals (ORFS).

** L-Series connectors are used with 37° flare.

INTRODUCTION

Torque values for Inch O-Ring Boss (ORB) port non-adjustable connections

SAE dash size	UN/UNF thread size	Inch tube OD mm (in)	S-Series *		L-Series **	
			Ferrous N·m (lb ft) ± 10%	Non-Ferrous N·m (lb ft) ± 10%	Ferrous N·m (lb ft) ± 10%	Non-Ferrous N·m (lb ft) ± 10%
2	5/16-24	3.18 (0.125)	–	–	8.5 (6.3)	5 (3.7)
3	3/8-24	4.76 (0.187)	15.5 (11.4)	9.3 (6.9)	10.5 (7.7)	6.3 (4.6)
4	7/16-20	6.35 (0.250)	37 (27.3)	22 (16.2)	19 (14)	11.5 (8.5)
5	1/2-20	7.94 (0.313)	42 (31)	25 (18.4)	26 (19.2)	15.5 (11.4)
6	9/16-18	9.52 (0.375)	47 (34.7)	28 (20.7)	32 (23.6)	19 (14)
8	3/4-16	12.7 (0.500)	89 (65.6)	53 (39.1)	53 (39.1)	32 (23.6)
10	7/8-14	15.88 (0.625)	121 (89.2)	73 (53.8)	63 (46.5)	38 (28)
12	1-1/16-12	19.05 (0.750)	178 (131.3)	107 (78.9)	100 (73.8)	60 (44.3)
14	1-3/16-12	22.22 (0.875)	225 (166)	135 (99.6)	131 (96.6)	79 (58.3)
16	1-5/16-12	25.4 (1.000)	283 (208.7)	170 (125.4)	156 (115.1)	94 (69.3)
20	1-5/8-12	31.75 (1.250)	300 (221.3)	180 (132.8)	210 (154.9)	126 (92.9)
24	1-7/8-12	38.1 (1.500)	388 (286.2)	233 (171.9)	220 (162.3)	132 (97.4)
32	2-1/2-12	50.8 (2.000)	388 (286.2)	233 (171.9)	315 (232.3)	189 (139.4)

* S-Series connectors are used with O-Ring Face Seals (ORFS).

** L-Series connectors are used with 37° flare.

Torque values for inch O-Ring Boss (ORB) port adjustable connections

SAE dash size	UN/UNF thread size	Inch tube OD mm (in)	S-Series *		L-Series **	
			Ferrous N·m (lb ft) ± 10%	Non-Ferrous N·m (lb ft) ± 10%	Ferrous N·m (lb ft) ± 10%	Non-Ferrous N·m (lb ft) ± 10%
2	5/16-24	3.18 (0.125)	–	–	8.5 (6.3)	5 (3.7)
3	3/8-24	4.76 (0.187)	10.5 (7.7)	9.3 (6.9)	10.5 (7.7)	6.3 (4.6)
4	7/16-20	6.35 (0.250)	21 (15.5)	21 (15.5)	19 (14)	11.5 (8.5)
5	1/2-20	7.94 (0.313)	42 (31)	25 (18.4)	26 (19.2)	15.5 (11.4)
6	9/16-18	9.52 (0.375)	47 (34.7)	28 (20.7)	32 (23.6)	19 (14)
8	3/4-16	12.7 (0.500)	89 (65.6)	53 (39.1)	53 (39.1)	32 (23.6)
10	7/8-14	15.88 (0.625)	121 (89.2)	73 (53.8)	63 (46.5)	38 (28)
12	1-1/16-12	19.05 (0.750)	178 (131.3)	107 (78.9)	100 (73.8)	60 (44.3)
14	1-3/16-12	22.22 (0.875)	225 (166)	135 (99.6)	131 (96.6)	79 (58.3)
16	1-5/16-12	25.4 (1.000)	285 (210.2)	170 (125.4)	156 (115.1)	94 (69.3)
20	1-5/8-12	31.75 (1.250)	300 (221.3)	180 (132.8)	210 (154.9)	126 (92.9)
24	1-7/8-12	38.1 (1.500)	388 (286.2)	233 (171.9)	220 (162.3)	132 (97.4)
32	2-1/2-12	50.8 (2.000)	388 (286.2)	233 (171.9)	315 (232.3)	189 (139.4)

* S-Series connectors are used with O-Ring Face Seals (ORFS).

** L-Series connectors are used with 37° flare.

INTRODUCTION

Torque values for inch O-Ring Boss (ORB) port plugs

SAE dash size	UN/UNF thread size	Ferrous		Non-Ferrous
		Internal hex N·m (lb ft) ± 10%	External hex N·m (lb ft) ± 10%	N·m (lb ft) ± 10%
2	5/16-24	7.5 (5.5)	12.5 (9.2)	7.5 (5.5)
3	3/8-24	14.5 (10.7)	21 (15.5)	12.5 (9.2)
4	7/16-20	21 (15.5)	37 (27.3)	22 (16.2)
5	1/2-20	28 (20.7)	42 (31)	25 (18.4)
6	9/16-18	47 (34.7)	47 (34.7)	28 (20.7)
8	3/4-16	89 (65.6)	89 (65.6)	53 (39.1)
10	7/8-14	116 (85.6)	116 (85.6)	70 (51.6)
12	1-1/16-12	176 (129.8)	176 (129.8)	106 (78.2)
14	1-3/16-12	247 (182.2)	247 (182.2)	148 (109.2)
16	1-5/16-12	284 (209.5)	284 (209.5)	170 (125.4)
20	1-5/8-12	357 (263.3)	357 (263.3)	214 (157.8)
24	1-7/8-12	441 (325.3)	441 (325.3)	265 (195.5)
32	2-1/2-12	536 (395.3)	536 (395.3)	322 (237.5)

Torque values for four-bolt flange connections (Metric Screws, Class 10.9)

Metric size mm	Imperial size in	Screw code 61	Code 61 N·m (lb ft) ± 10%	Screw code 62	Code 62 N·m (lb ft) ± 10%
13	1/2	M8 x 1.25	34 (25.1)	M8 x 1.25	34 (25.1)
19	3/4	M10 x 1.5	74 (54.6)	M10 x 1.5	74 (54.6)
25	1	M10 x 1.5	74 (54.6)	M12 x 1.75	137 (101)
32	1-1/4	M10 x 1.5	74 (54.6)	M12 x 1.75	137 (101)
				M14 x 1.5	189 (139.4)
38	1-1/2	M12 x 1.75	137 (101)	M16 x 2	310 (228.6)
51	2	M12 x 1.75	137 (101)	M20 x 2.5	575 (424.1)
64	2-1/2	M12 x 1.75	137 (101)	M24 x 3	575 (424.1)
76	3	M16 x 2	310 (228.6)	M30 x 3.5	680 (501.5)
89	3-1/2	M16 x 2	310 (228.6)	–	–
102	4	M16 x 2	310 (228.6)	–	–
127	5	M16 x 2	310 (228.6)	–	–

Torque values for four-bolt flange connections (Metric Screws, Class 8.8)

Metric size mm	Imperial size in	Screw code 61	Code 61 N·m (lb ft) ± 10%	Screw code 62	Code 62 N·m (lb ft) ± 10%
13	1/2	M8 x 1.25	29 (21.4)	M8 x 1.25	29 (21.4)
19	3/4	M10 x 1.5	57(42)	M10 x 1.5	57(42)
25	1	M10 x 1.5	57(42)	M12 x 1.75	100 (73.8)
32	1-1/4	M10 x 1.5	57(42)	M12 x 1.75	100 (73.8)
				M14 x 1.5	160 (118)
38	1-1/2	M12 x 1.75	100 (73.8)	M16 x 2	250 (184.4)
51	2	M12 x 1.75	100 (73.8)	M20 x 2.5	500 (368.8)
64	2-1/2	M12 x 1.75	100 (73.8)	M24 x 3	575 (424.1)
76	3	M16 x 2	250 (184.4)	M30 x 3.5	680 (501.5)
89	3-1/2	M16 x 2	250 (184.4)	–	–
102	4	M16 x 2	250 (184.4)	–	–
127	5	M16 x 2	250 (184.4)	–	–

INTRODUCTION

Torque values for four-bolt flange connections (Inch Screws, Grade 8)

Metric size mm	Imperial size in	Screw code 61	Code 61 N·m (lb ft) ± 10%	Screw code 62	Code 62 N·m (lb ft) ± 10%
13	1/2	5/16-18	34 (25.1)	5/16-18	34 (25.1)
19	3/4	3/8-16	63 (46.5)	3/8-16	63 (46.5)
25	1	3/8-16	63 (46.5)	7/16-14	97 (71.5)
32	1-1/4	7/16-14	97 (71.5)	1/2-13	158 (116.5)
38	1-1/2	1/2-13	158 (116.5)	5/8-11	310 (228.6)
51	2	1/2-13	158 (116.5)	3/4-10	473 (348.9)
64	2-1/2	1/2-13	158 (116.5)	–	–
76	3	5/8-11	310 (228.6)	–	–
89	3-1/2	5/8-11	310 (228.6)	–	–
102	4	5/8-11	310 (228.6)	–	–
127	5	5/8-11	310 (228.6)	–	–

Tapered thread connection tightening

British Standard Pipe Taper (BSPT) thread size (inch)	National Pipe Thread Fuel (NPTF) thread size (inch)	Turns from finger tight
1/8-28	1/8-27	2 - 3
1/4-19	1/4-18	2 - 3
3/8-19	3/8-18	2 - 3
1/2-14	1/2-14	2 - 3
3/4-14	3/4-14	2 - 3
1-11	1-11 1/2	1.5 - 2.5
1-1/4-11	1-1/4-11 1/2	1.5 - 2.5
1-1/2-11	1-1/2-11 1/2	1.5 - 2.5
2-11	2-11 1/2	1.5 - 2.5

Torque values for banjo bolt connections (Copper washer style)

Bolt thread (metric)	Hex size (mm)	Torque N·m (lb ft) ± 10%
M8 x 1.25	13	13 (9.6)
M10 x 1.25	17	16 (11.8)
M12 x 1.5	17	40 (29.5)
M14 x 1.5	19	45 (33.2)
M16 x 1.5	22	48 (35.4)
M18 x 1.5	24	50 (36.9)
M20 x 1.5	27	73 (53.8)
M22 x 1.5	32	73 (53.8)
M24 x 1.5	32	73 (53.8)

INTRODUCTION

Torque values for O-Ring Face Seals (ORFS) connections

SAE dash size	UN/UNF thread size	Inch tube OD (mm)	Metric tube OD (mm)	Hex size (mm) (Reference only)	* Swivel nut torque N·m (lb ft) ± 10%	** Swivel nut torque N·m (lb ft) ± 10%
4	9/16-18	6.35	6	17	27 (19.9)	27 (19.9)
5	5/8-18	7.94	8	19	34 (25.1)	34 (25.1)
6	11/16-16	9.52	10	22	44 (32.5)	44 (32.5)
8	13/16-16	12.7	12	24	65 (47.9)	65 (47.9)
10	1-14	15.88	16	30	100 (73.8)	100 (73.8)
12	1-3/16-12	19.05	20	36	150 (110.6)	131 (96.6)
14	1-5/16-12	22.23	22	41	163 (120.2)	131 (96.6)
16	1-7/16-12	25.4	25	41	210 (154.9) ***	131 (96.9)
20	1-11/16-12	31.75	30	50	280 (206.5) ***	178 (131.3)
24	2-12	38.1	38	60	375 (276.6) ***	210 (154.9)

* High/Medium-pressure applications > 50 bar (725 psi).

** Low-pressure applications < 50 bar (725 psi).

*** It is recommended to use a four-bolt flange connection instead of O-Ring Face Seals (ORFS) sizes "16" and up.

Torque values for 37° flare connections - Joint Industry Council (JIC)

SAE dash size	UN/UNF thread size	Metric tube OD (mm)	Inch tube OD (mm)	Swivel nut torque N·m (lb ft) ± 10%
2	5/16-24	–	3.18	8.25 (6.1)
3	3/8-24	–	4.76	11.5 (8.5)
4	7/16-20	6	6.35	15.5 (11.4)
5	1/2-20	8	7.94	20 (14.8)
6	9/16-18	10	9.52	25 (18.4)
8	3/4-16	12	12.7	52 (38.4)
10	7/8-14	16	15.88	81 (59.7)
12	1-1/16-12	20	19.05	112 (82.6)
14	1-3/16-12	–	22.22	133 (98.1)
16	1-5/16-12	25	25.4	155 (114.3)
20	1-5/8-12	30/32	31.75	180 (132.8)
24	1-7/8-12	38	38.1	225 (166)
32	2-1/2-12	50	50.8	348 (256.7)

Torque values for 30° flare, 60° cone connections

Nominal size (mm)	British Standard Pipe Parallel (BSPP) thread size	Hex size (mm)	Swivel nut torque N·m (lb ft) ± 10%
5, 6, 6.3	G 1/4	17	25 (18.4)
8, 9, 10	G 3/8	19	34 (25.1)
12, 12.5	G 1/2	22	64 (47.2)
15, 16, 19	G 3/4	30	132 (97.4)
25	G 1	36	196 (144.6)
31.5, 32	G 1-1/4	46	225 (166)
38	G 1-1/2	50	255 (188.1)
50, 51	G 2	65	316 (223.1)

Basic instructions - Shop and assembly

Workmaster™ 25S 25 Hp, without cab

NA

Shimming

For each adjustment operation, select adjusting shims and measure the adjusting shims individually using a micrometer, then add up the recorded values. Do not rely on measuring the entire shimming set, which may be incorrect, or the rated value shown on each shim.

Rotating shaft seals

For correct rotating shaft seal installation, proceed as follows:

1. Before assembly, allow the seal to soak in the oil it will be sealing for at least thirty minutes.
2. Thoroughly clean the shaft and check that the working surface on the shaft is not damaged.
3. Position the sealing lip facing the fluid.

NOTE: *With hydrodynamic lips, take into consideration the shaft rotation direction and position the grooves so that they will move the fluid towards the inner side of the seal.*

4. Coat the sealing lip with a thin layer of lubricant (use oil rather than grease). Fill the gap between the sealing lip and the dust lip on double lip seals with grease.
5. Insert the seal in its seat and press down using a flat punch or seal installation tool. Do not tap the seal with a hammer or mallet.
6. While you insert the seal, check that the seal is perpendicular to the seat. When the seal settles, make sure that the seal makes contact with the thrust element, if required.
7. To prevent damage to the seal lip on the shaft, position a protective guard during installation operations.

O-ring seals

Lubricate the O-ring seals before you insert them in the seats. This will prevent the O-ring seals from overturning and twisting, which would jeopardize sealing efficiency.

Sealing compounds

Apply a sealing compound on the mating surfaces when specified by the procedure. Before you apply the sealing compound, prepare the surfaces as directed by the product container.

Spare parts

Only use CNH Original Parts or NEW HOLLAND Original Parts.

Only genuine spare parts guarantee the same quality, duration, and safety as original parts, as they are the same parts that are assembled during standard production. Only CNH Original Parts or NEW HOLLAND Original Parts can offer this guarantee.

When ordering spare parts, always provide the following information:

- Machine model (commercial name) and Product Identification Number (PIN)
- Part number of the ordered part, which can be found in the parts catalog

Protecting the electronic and/or electrical systems during charging and welding

To avoid damage to the electronic and/or electrical systems, always observe the following practices:

1. Never make or break any of the charging circuit connections when the engine is running, including the battery connections.
2. Never short any of the charging components to ground.
3. Always disconnect the ground cable from the battery before arc welding on the machine or on any machine attachment.
 - Position the welder ground clamp as close to the welding area as possible.
 - If you weld in close proximity to a computer module, then you should remove the module from the machine.
 - Never allow welding cables to lie on, near, or across any electrical wiring or electronic component while you weld.
4. Always disconnect the negative cable from the battery when charging the battery in the machine with a battery charger.

NOTICE: *If you must weld on the unit, you must disconnect the battery ground cable from the machine battery. The electronic monitoring system and charging system will be damaged if this is not done.*

5. Remove the battery ground cable. Reconnect the cable when you complete welding.

WARNING

Battery acid causes burns. Batteries contain sulfuric acid.

Avoid contact with skin, eyes or clothing. Antidote (external): Flush with water. Antidote (eyes): flush with water for 15 minutes and seek medical attention immediately. Antidote (internal): Drink large quantities of water or milk. Do not induce vomiting. Seek medical attention immediately. Failure to comply could result in death or serious injury.

W0111A

Special tools

The special tools that NEW HOLLAND suggests and illustrate in this manual have been specifically researched and designed for use with NEW HOLLAND machines. The special tools are essential for reliable repair operations. The special tools are accurately built and rigorously tested to offer efficient and long-lasting operation.

By using these tools, repair personnel will benefit from:

- Operating in optimal technical conditions
- Obtaining the best results
- Saving time and effort
- Working in safe conditions

General specification

Workmaster™ 25S 25 Hp, without cab		NA
		Model Workmaster™ 25S Hydrostatic
Engine		
Type	Diesel	
Model	3TNV80F	
Emission level (tier)	Tier 4B (final)	
Aspiration	Indirect swirl chamber	
Engine gross horsepower	18.4 kW (24.7 Hp) @ 3000 RPM	
Cylinders	3	
Bore	80 mm (3.15 in)	
Stroke	84 mm (3.3 in)	
Displacement	1115 cm³ (68.0 in³)	
Compression ratio	23.0:1	
Firing order	1-3-2	
Low idle speed	1320 RPM	
Maximum speed:		
High Idle	3235 RPM	
Rated	3000 RPM	
Block type:		
	Cast iron	
Lubrication:		
	Forced lubrication type	
Pump	Trochoid gear pump	
Capacities		
Fuel tank	25 L (6.6 US gal)	
Cooling system capacity	3.3 L (3.49 US qt)	
Engine crankcase:		
With Filter	2.9 L (3 US qt)	
Rear axle & transmission (Includes hydraulics)		
HST	12.5 L (3 US gal)	
Front axle	2 L (1 US gal)	
Cooling system		
Type	Pressurized liquid with recirculating bypass	
Water pump:		
Type	Centrifugal	
Drive	V-Belt	
Cooling system capacity	3.3 L (3.49 US qt)	
Belt deflection	10 – 14 mm (0.39 – 0.55 in) when 10 kgf (22 lbf) pressure is applied midway between belt pulleys	
Fan diameter	330 mm (13 in)	
Thermostat:		
Start to open	82 °C (179.6 °F)	
Fully Open	95 °C (203 °F)	
Radiator cap	90 kPa (12.8 psi)	
Electrical system		
Alternator	12 V, Heavy duty, 40 A	
Battery	12 V, 45 A·h	
Starting motor	12 V electric solenoid	
Cold - start aid	Glow plug	

INTRODUCTION

		Model Workmaster™ 25S Hydrostatic
Fuel system		
Fuel type	Diesel	
Type of fuel to use if above -7 °C (19 °F)	No. 2-Diesel, Cetane rating: minimum 40	
Type of fuel to use if below -7 °C (19 °F)	No. 1-Diesel, Cetane rating: minimum 40	
Sulphur content (Maximum) :	No. 1-Diesel	
Sulphur content (Maximum) :	No. 2-Diesel	
HST Transmission		
Number of range gears and speeds	2	
Range synchronization	None	
Number of gear levers	1	
Cruise control offering	STD	
Cruise control type	Electrical	
High pressure relief valve setting	16603 kPa (2408 psi)	
Trans/rear axle oil capacity	12.5 L (3.3 US gal)	
Control	Forward / reverse ,individual pedal	
Differential lock	Mechanical, foot	
Service brake		
Type	Wet disc, oil bath	
Actuation	Mechanical; one pedal	
Number of plates - per axle	2	
Total number pf Plates	4	
Disc lining diameter OD	108 mm (4.25 in)	
Disc lining diameter ID	65 mm (2.56 in)	
Disc thickness	3.4 mm (0.1338 in)	
Lining type (Material)	Paper	
Service brake pedal parking lock	Yes	
Minimum wear thickness	0.4 mm (0.0157 in)	
Stator disc thickness	2.0 mm (0.0787 in)	
Parking brake		
Type	Latch	
Location	Seat side	
Actuation	Mechanical	
Number of plates	4	
Lever latching	Cable activated	
Steering		
Type	Central support, bevel gear type	
Turns lock-to-lock:		
FWD	2.86 L to R 2.89 R to L	
Front wheel		
Toe-in	0 – 8 mm (0 – 0.314 in)	
Camber	2°	
Steering angle	Inner 54° , Outer 44°	

INTRODUCTION

	Model Workmaster™ 25S Hydrostatic
Front axle oscillation	0° +/- 7
Turning radius w/o brakes:	
FWD	2400 mm (94 in) Left turn 2400 mm (94 in) Right turn
Steering system relief valve setting	8329 – 8825 kPa (1208 – 1280 psi)
Maximum pump flow	8 L/min (2.1 US gpm) HST
Power Take-Off (PTO) (Rear)	
Type	Independent
Clutch type	Wet disc
Clutch material, asbestos free (Yes or No)	Yes
Number of plates	6
Plate diameter	90.0 mm (3.5 in)
Plate surface area	3145.0 mm² (4.9 in²)
Activation	Electro-hydraulic
Selector	Rear / mid / rear + mid
Number of splines	6
Shaft size:	34.9 mm (1/38 in)
Engine speed for 540 RPM rear PTO operation	2933 RPM
PTO Horsepower observed	12.8 kW (17.2 Hp) - HST
Mid Power Take-Off (PTO)	
Type	Independent
Clutch type	Wet disc
Number of plates	6
Actuation	Switch
Selector	Rear / mid / rear + mid
Direction of rotation (As viewed from rear of tractor)	Clockwise
Number of splines	15
Shaft size:	25.0 mm (0.98 in)
Engine speed for 2500 RPM mid PTO operation	2841 RPM
Engine speed for 540 RPM	2933 RPM
Hydraulic lift system	
Category	CAT-1
Type	Open center
Pump type	Gear
Pump capacity	25 L/min (6.6 US gpm)
System relief valve setting	12997 – 13500 kPa (1885 – 1958 psi)
Control type	Position control
Drop rate control valve	Standard
Mower cut height control	Standard
Lift capacity at ball end	450 kg (992 lb)
Lift capacity at 24 in behind	330 kg (728 lb)
Rear hitch point	Standard
Unbrake towable mass	800 kg (1764 lb)
Independent brake, towable mass	1600 kg (3527 lb)
Loader valve	Standard with float
Transmission speeds (Hydrostatic)	
	(2600 RPM Engine rated speed with 11.2-24 Rear tires)

INTRODUCTION

		Model Workmaster™ 25S Hydrostatic
Gear position:		
Low Forward		0.0 – 6.1 km/h (0.0 – 3.8 mph)
High Forward		0.0 – 9.1 km/h (0.0 – 14.6 mph)
Reverse low		0.0 – 3.7 km/h (0.0 – 2.3 mph)
Reverse high		0.0 – 8.8 km/h (0.0 – 5.5 mph)
Drawbars		
Adjustable		Standard
Unbrake towable mass		800 kg (1764 lb)
Independent brake, towable mass		1600 kg (3527 lb)
Tires		
Front :		
Turf:		18x 8.50-10, 4PR, R3
Industrial:		18x 8.50-10, 4PR, R4
Rear :		
Turf		26 x 12.0–12, 4PR, R3
Industrial		26 x 12.0–12, 4PR, R4
Wheel bolt torques		
Front wheel --- disc-to-hub:		
FWD		43 – 57 N·m (32 – 42 lb ft)
Rear wheel --- disc-to axle		43 – 57 N·m (32 – 42 lb ft)
Roll Over Protective Structure (ROPS) attaching bolt torques		
ROPS to rear axle		76 N·m (56 lb ft)
Seat belt		54 N·m (40 lb ft)

General specification

Workmaster™ 25S 25 Hp, without cab	NA
------------------------------------	----

Fatty Acid Methyl Ester Biodiesel (Biodiesel Fuel) consists of a family of fuels derived from vegetable oils treated with methyl esters.

NOTICE: Biodiesel Fuel blends are approved for your engine only if they comply with **EN14214** Specification Standards or **ASTM D6751**.

NOTICE: It is imperative that you check which blend is approved for your engine with your NEW HOLLAND dealer. Be aware that the use of Biodiesel Fuel that does not comply with the Standards mentioned above could lead to severe damage to the engine and fuel system of your machine. The use of fuels that are not approved may void NEW HOLLAND Warranty coverage.

Biodiesel fuel usage conditions

NOTICE: The Biodiesel Fuel must meet the fuel Specification mentioned above.

Biodiesel Fuel must be purchased from a trusted supplier that understands the product and maintains good fuel quality. Biodiesel Fuel must be pre-blended by the supplier. Mixing Biodiesel Fuels on-site can result incorrect mixture that can lead to problems with both engine and fuel system.

Engine performance is affected by the use of Biodiesel Fuel. There may be up to **12%** reduction in power or torque depending on the blend used.

NOTICE: DO NOT modify the engine and/or injection pump settings to recover the reduced performance.

The reduced power must be accepted if using any Biodiesel Fuel blend.

Some modification may be required to allow your engine to run Biodiesel Fuel. Consult you dealer for complete information on these modifications.

Biodiesel Fuel has a higher cloud point than Diesel Fuel.

NOTICE: The use of high Biodiesel Fuel blends are not recommended in cold weather conditions.

With Biodiesel Fuels, it may be necessary to change the engine oil, engine oil filter and fuel filter elements more frequently than with Diesel Fuels. Biodiesel Fuel can remove rust and particles from the inside of on-site fuel storage tanks that would normally adhere to the sides of the tank. Like particle deposits that commonly occur with Diesel Fuel, these particles can become trapped by the machine fuel filters, causing blockage and shortening filter life. In cold weather, this is more likely to happen. Consult your NEW HOLLAND dealer for information on cold weather operation and proper maintenance intervals when using any Biodiesel Fuel blend.

When handling Biodiesel Fuel, care must be taken not to allow water into the fuel supply. Biodiesel Fuel will actually attract moisture from the atmosphere.

Fuel tanks must be kept as full as possible to limit the amount of air and water vapors in them. It may be necessary to drain the fuel filter water tap more frequently.

Potential oxidation and stability could be a problem with the fuel stored in the machine.

NOTICE: Machines must not be stored for more than three months with Biodiesel Fuel blends in the fuel system.

If long storage periods are necessary, the engine must run on Diesel Fuel for 20 hours to flush the Biodiesel Fuel out of the engine fuel system prior to storage.

NOTICE: Biodiesel Fuel must not be stored in on-site storage tanks for more than three months.

Any spillage of Biodiesel Fuel must be cleaned up immediately before it can cause damage to the environment and the paint finish of the machine.

Before using Biodiesel Fuel blends you should consult with your dealer to receive full information about the approved blend for your machine and any detailed conditions of its usage.

NOTICE: Be aware that not fulfilling the requirements and conditions of Biodiesel Fuel usage will void your machine's NEW HOLLAND Warranty coverage.

Consumables

Workmaster™ 25S 25 Hp, without cab	NA
------------------------------------	----

Lubricant	Type and Description
Engine Oil	NEW HOLLAND AMBRA UNITEK MASTERGOLD SSL CJ-4 SAE 0W-40
	NEW HOLLAND AMBRA SUPER GOLD 10W-30
	NEW HOLLAND AMBRA SUPER GOLD 15W-40
Transmission/Hydraulic Oil	NEW HOLLAND AMBRA MULTI G 134™ HYDRAULIC TRANSMISSION OIL
	NEW HOLLAND AMBRA F200A HYDRAULIC FLUID
Front Axle/Gear Oil	NEW HOLLAND AMBRA HYPOIDE 90 GEAR LUBE
Grease	NEW HOLLAND AMBRA GR-9 MULTI-PURPOSE GREASE
Coolant	CNH XHD HEAVY DUTY COOLANT / ANTI-FREEZE

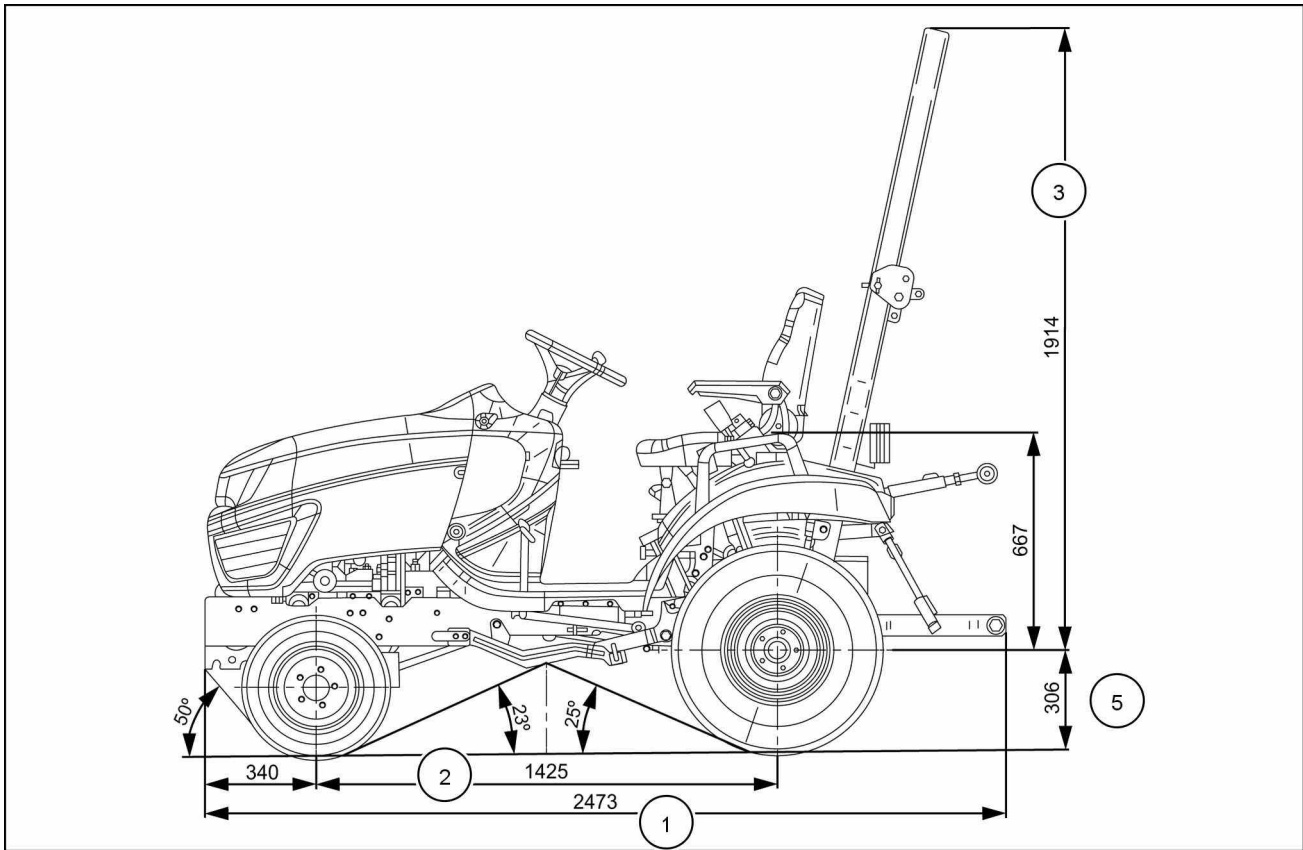
Dimension

Workmaster™ 25S 25 Hp, without cab	NA
------------------------------------	----

Workmaster 25S	
(1) - LENGTH:	
FWD:	
	2473 mm (97.4 in)
(2) - WHEEL BASE:	
FWD	1425 mm (56.1 in)
(3) - Top of ROPS - Folding:	
Turf Tires: 26 x 12.0-12, 4PR	
Up Position	TBD
Down Position	TBD
Ind. Tires: 26 x 12.0-12, 4PR	
Up Position	2220 mm (87 in)
Down Position	1626 mm (64 in)
(4) - WIDTH:	
Rear Axle - Outside to Outside of tire:	
Turf Tires: 26 x 12.0-12, 4PR	TBD
Ind. Tires: 26 x 12.0-12, 4PR	1187 mm (47 in)
(5) - MINIMUM GROUND CLEARANCE (under drawbar support):	
Turf Tires: 26 x 12.0-12, 4PR	TBD
Ind. Tires: 26 x 12.0-12, 4PR	306 mm (12 in)

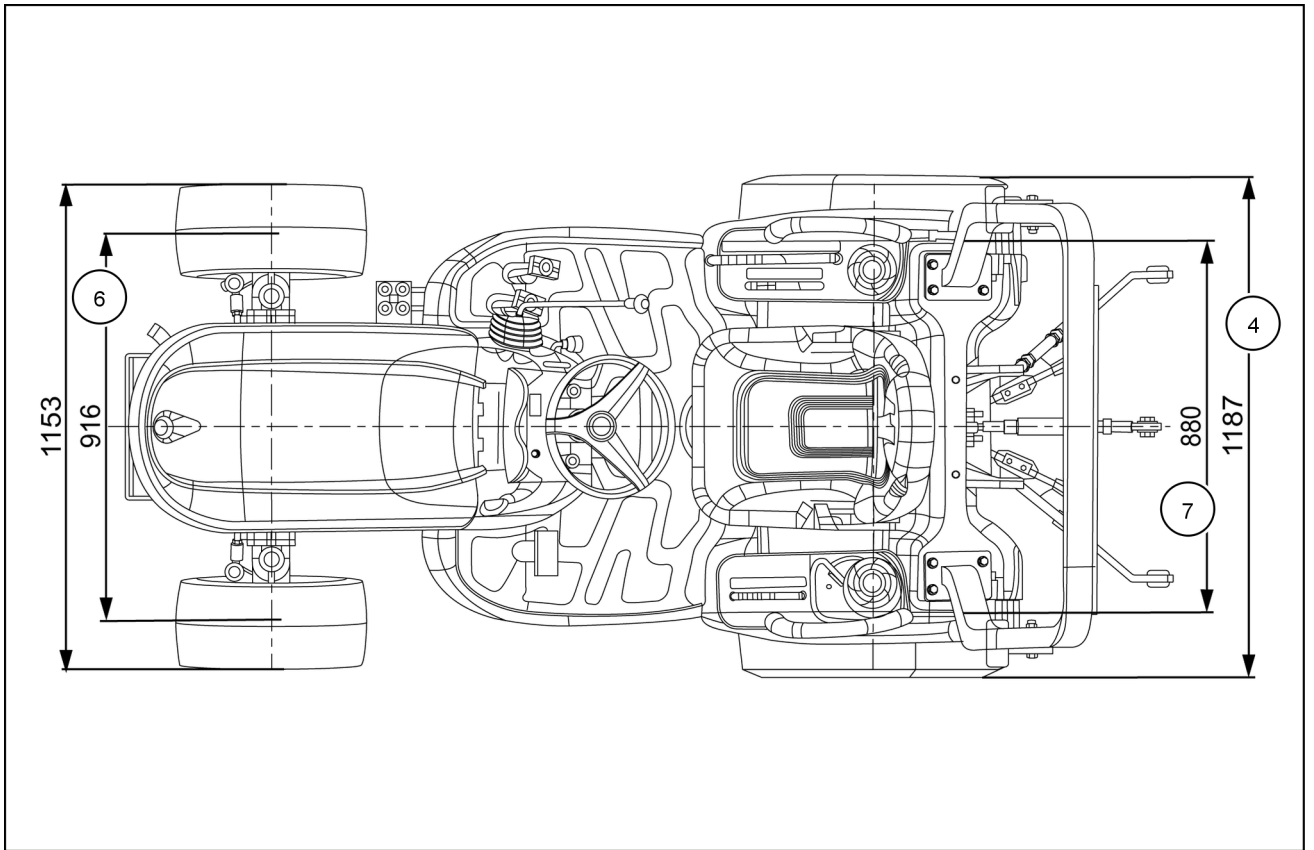
INTRODUCTION

Workmaster 25S	
WHEEL TREAD SETTINGS:	
(6)-FRONT:	
Turf Tires: 26 x 12.0-12, 4PR	TBD
Ind. Tires: 26 x 12.0-12, 4PR	916 mm (36 in)
(7)-REAR:	
Turf Tires: 26 x 12.0-12, 4PR	TBD
Ind. Tires: 26 x 12.0-12, 4PR	880 mm (35 in)
WEIGHT: less tires:	
HST (FWD)	1175 kg (2590 lb)



NHIL17CT01125FA 1

INTRODUCTION



NHIL17CT01124FA 2

Product identification

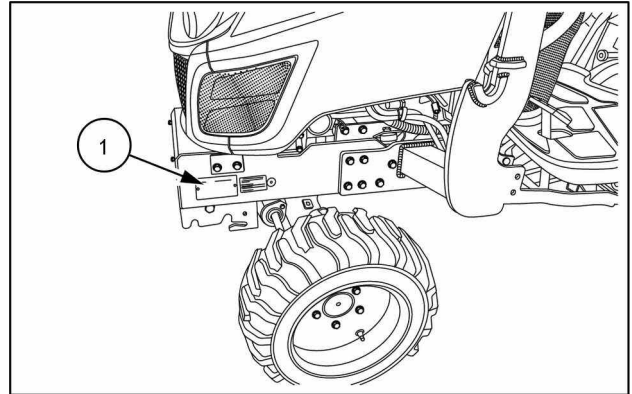
Workmaster™ 25S 25 Hp, without cab

NA

Chassis number

The Product Identification Number (PIN) plate **(1)** is located on the left-hand side of the frame, near the left front wheel.

The numbers on the plate are important in the event your tractor should require future service.

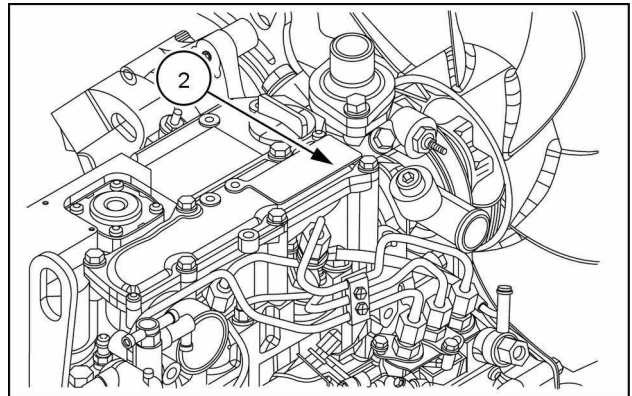


NHIL17CT01347AA 1

Engine number

The Product Identification Number (PIN) plate **(2)**, for the engine is located on the forward end of the valve cover.

The numbers on the plate are important in the event your engine should require future service.

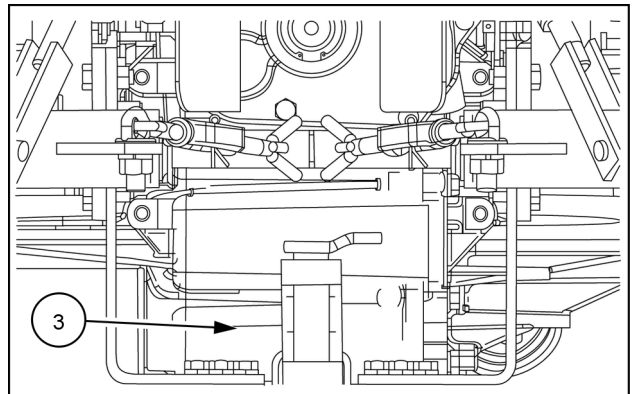


NHIL17CT01119AA 2

Transmission number

The Product Identification Number (PIN) plate **(3)**, for the transmission is located below the Power Take-Off (PTO) shield.

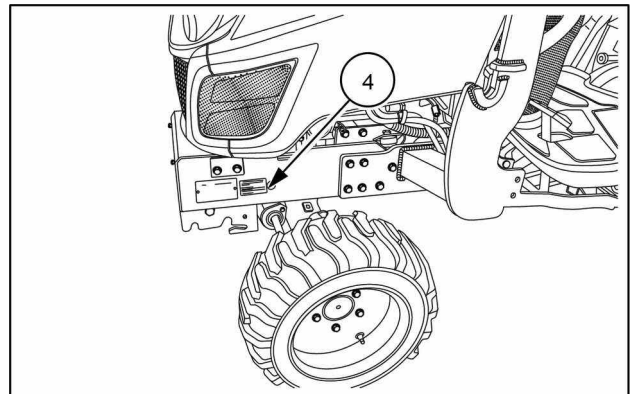
The numbers on the plate are important in the event your transmission should require future service.



NHIL17CT01120AA 3

Emissions plate

The emissions plate **(4)** is located aft of the PIN plate.



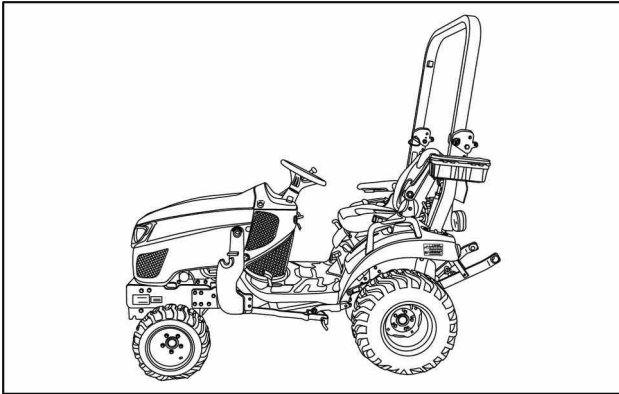
NHIL17CT01347AA 4

Product identification machine orientation

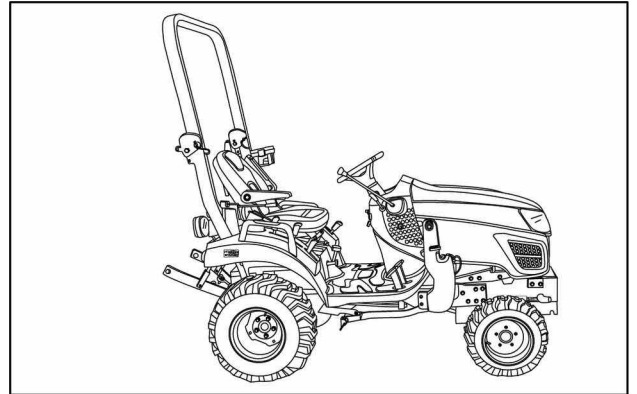
Workmaster™ 25S 25 Hp, without cab

NA

NOTE: On this equipment, left-hand and right-hand are determined by standing behind the unit, looking in the direction of travel.



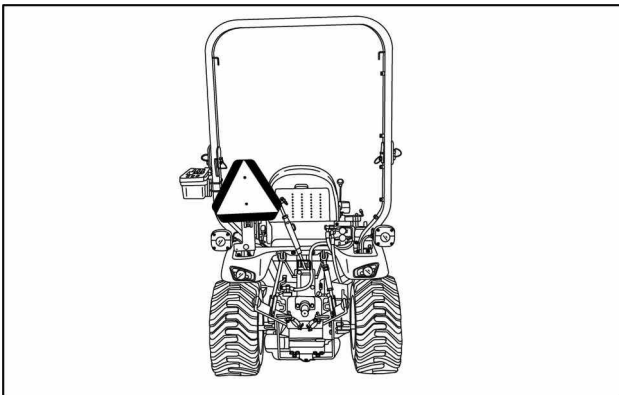
NHIL17CT01343AA 1



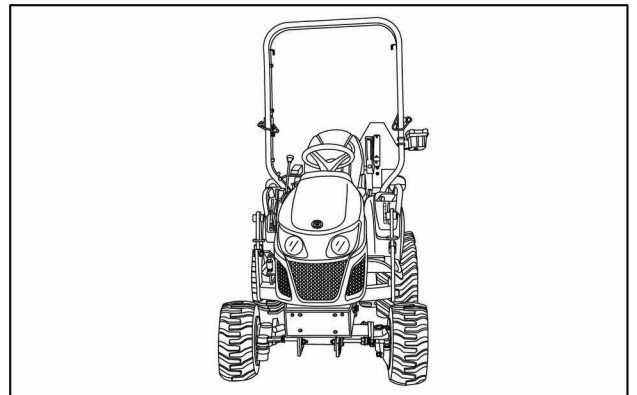
NHIL17CT01345AA 2

Left-hand view

Right-hand view



NHIL17CT01346AA 3



NHIL17CT01344AA 4

Rear view

Front view

CONSUMABLES INDEX

Consumable	Reference	PAGE
Loctite®	Torque - Standard torque data for hydraulic connections	6
NEW HOLLAND AMBRA UNITEK MASTERGOLD SSL CJ-4 SAE 0W-40	Consumables	20
NEW HOLLAND AMBRA SUPER GOLD 10W-30	Consumables	20
NEW HOLLAND AMBRA SUPER GOLD 15W-40	Consumables	20
NEW HOLLAND AMBRA MULTI G 134™ HYDRAULIC TRANSMISSION OIL	Consumables	20
NEW HOLLAND AMBRA F200A HYDRAULIC FLUID	Consumables	20
NEW HOLLAND AMBRA HYPOIDE 90 GEAR LUBE	Consumables	20
NEW HOLLAND AMBRA GR-9 MULTI-PURPOSE GREASE	Consumables	20
CNH XHD Heavy Duty Coolant / Anti-freeze	Consumables	20



SERVICE MANUAL

Engine

Workmaster™ 25S 25 Hp, without cab

Contents

Engine - 10

[10.001] Engine and crankcase	10.1
[10.216] Fuel tanks	10.2
[10.206] Fuel filters	10.3
[10.202] Air cleaners and lines	10.4
[10.254] Intake and exhaust manifolds and muffler	10.5
[10.400] Engine cooling system	10.6
[10.414] Fan and drive	10.7

CONSUMABLES INDEX

Consumable	Reference	PAGE
Loctite® 271™	Engine - Remove	10.1 / 10
Loctite® 271™	Engine - Install	10.1 / 13
NEW HOLLAND AMBRA AGRIFLU	Radiator - Filling	10.6 / 14



Engine - 10

Engine and crankcase - 001

Workmaster™ 25S 25 Hp, without cab

Contents

Engine - 10

Engine and crankcase - 001

SERVICE

Engine

Remove (*)	4
Install (*)	12

(*) See content for specific models

CONSUMABLES INDEX

Consumable	Reference	PAGE
Loctite® 271™	Engine - Remove	10.1 / 10
Loctite® 271™	Engine - Install	10.1 / 13

Engine - Remove

Workmaster™ 25S 25 Hp, without cab

NA

⚠ WARNING

Hot liquid under pressure!

Scalding can result from fast removal of the radiator cap. Check and service the engine cooling system according to the maintenance instructions in this manual.

Failure to comply could result in death or serious injury.

W0163A

⚠ WARNING

Avoid injury!

Handle all parts carefully. Do not place your hands or fingers between parts. Use Personal Protective Equipment (PPE) as indicated in this manual, including protective goggles, gloves, and safety footwear.

Failure to comply could result in death or serious injury.

W0208A

⚠ WARNING

Heavy objects!

Lift and handle all heavy components using lifting equipment with adequate capacity. Always support units or parts with suitable slings or hooks. Make sure the work area is clear of all bystanders.

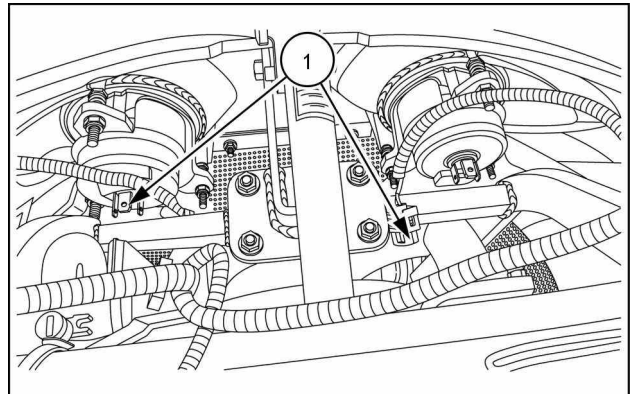
Failure to comply could result in death or serious injury.

W0398A

Prior operation:

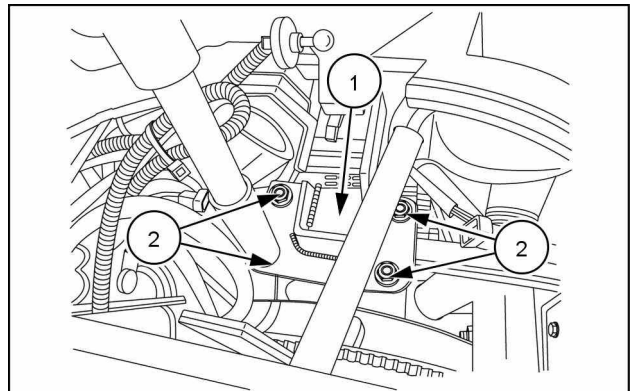
Engine hood and panels - Remove (90.100)

1. Disconnect the two lighting harness electrical connectors (1).



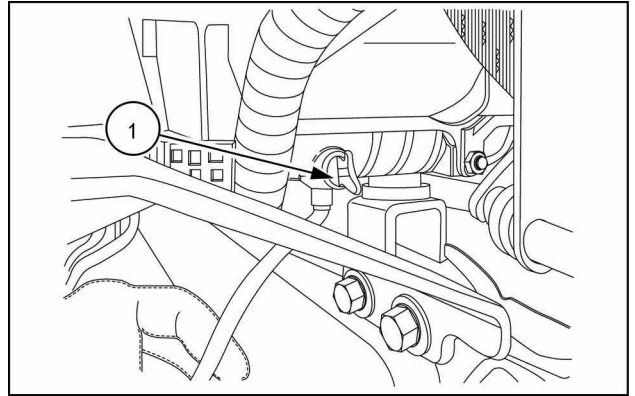
NHIL17CT01380AA 1

2. Remove the hood hinge bracket (1) by removing four M8 flange nuts (2).



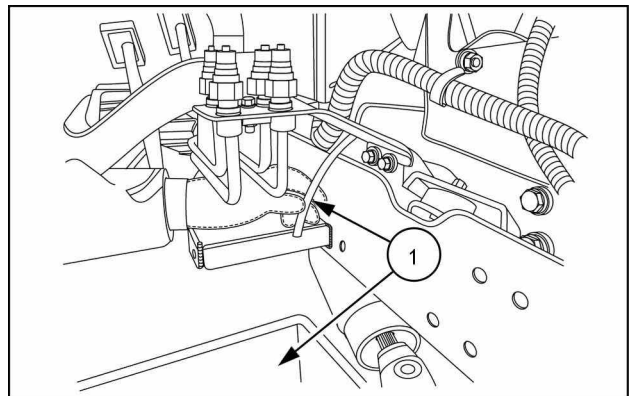
NHIL17CT01958AA 2

3. Open the drain cock (1) under the right-hand side of the radiator.



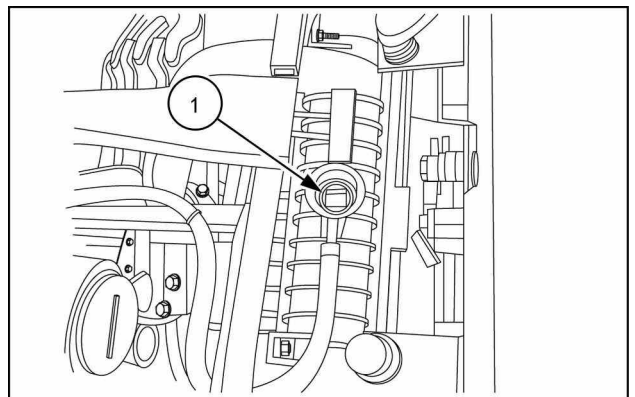
NHIL17CT01957AA 3

4. Drain the engine coolant into a clean container (1).
NOTE: The cooling system capacity is 3.3 L (3.49 US qt).



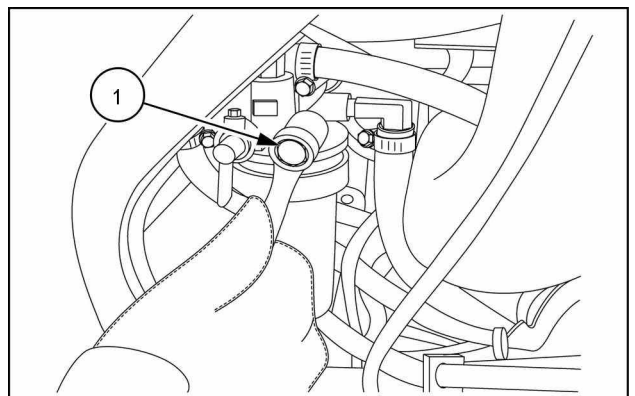
NHIL17CT01959AA 4

5. Remove the radiator cap (1) to accelerate draining all of the fluid.



NHIL17CT01960AA 5

6. Remove the fuel filter by removing one bolt (1).



NHIL17CT01962AA 6

This as a preview PDF file from best-manuals.com



Download full PDF manual at best-manuals.com