

CLAAS



AXION 850-840-830-820-810 C.I.S.

Operator's manual

SERVICE & PARTS

ABOUT THIS OPERATOR'S MANUAL

6543

This is the original operator's manual. It will simply be referred to as the "operator's manual" throughout this document

This operator's manual complies with the regulations currently in force in the first country the tractor has been delivered to.

This operator's manual contains the instructions for using, adjusting, servicing, cleaning and transporting the tractor. It is essential to be familiar with all of these instructions in order to:

- Improve the performance of the tractor
- Increase the tractor's availability
- Extend the service life of the tractor
- Ensure the correct working conditions in terms of both safety and comfort

If any maintenance operations are missed or if the tractor is used incorrectly, the following is possible:

- An increased safety risk
- Premature wear of the tractor
- A reduction in tractor performance
- Loss of output and time

Have the tractor serviced regularly by an approved CLAAS distributor.

This operator's manual can be considered contractual. CLAAS has a policy of continuous technical improvement to all its products, and therefore reserves the right to change without notice and at any time the details contained in this operator's manual.

The description of the models contained in this operator's manual was established from technical specifications known at the time this operator's manual was written. The operator's manual contains all of the equipment (standard or optional) that exists for these models. The presence of this equipment in the tractor depends on the tractor version and options chosen by the purchaser and the country of sale for this tractor.

Servicing operations during the warranty period are mandatory; failure to carry them out will nullify the contractual warranty.

Failure to observe the instructions for use and maintenance of the tractor as described in this operator's manual definitively excludes any possibility of recourse to the CLAAS warranty system.

The instruction and warning plates affixed to the tractor give important information about possible risks of use. Following these instructions will guarantee your safety!

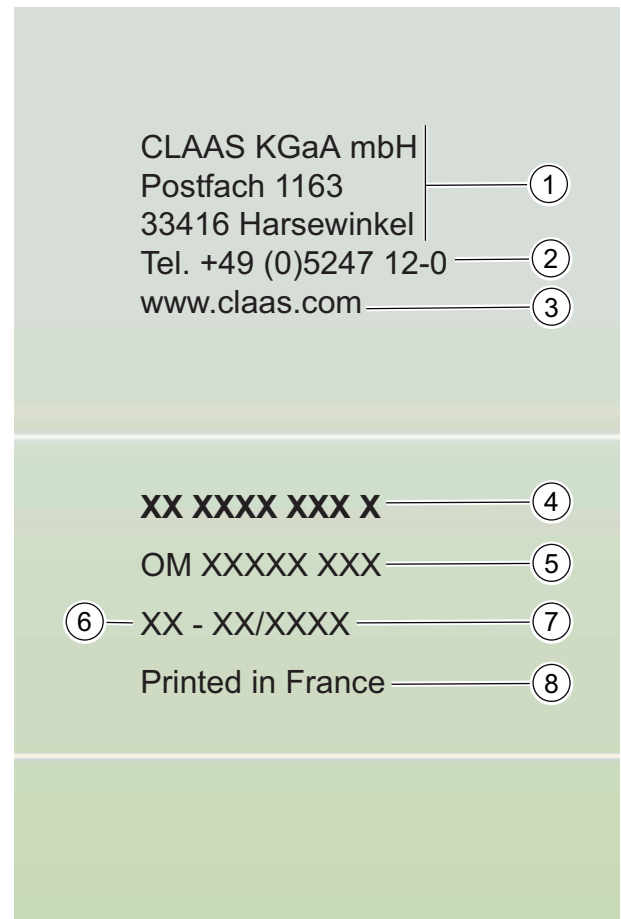
Front/rear tools have a separate operator's manual.

The CLAAS distribution network is available to respond to any questions that you may have relating to the content of this operator's manual.

Important information concerning this operator's manual

Important information concerning this operator's manual appears at the end of the manual:

- 1 – Address of CLAAS company headquarters
- 2 – Phone number to call if necessary
- 3 – Address of CLAAS company website
- 4 – Reference of this operator's manual
- 5 – Designation of this operator's manual
- 6 – Language code for this operator's manual
- 7 – Publication date of this operator's manual
- 8 – Country where this operator's manual was printed



000msn00gm

The reference, designation and publication date of this operator's manual also appear at the bottom of each page of the operator's manual. The reference of the operator's manual should be quoted in any query concerning the operator's manual and when ordering additional copies.

Classification into modules

The sections in this manual are categorised into modules, as far as the contents permit. The structure of these modules is identical in each section.

The different product groups have different module structures. CLAAS always endeavours to retain these module structures in each document.

Direction indications

Indications such as front, rear, right-hand and left-hand are always in the context of the direction of travel of the tractor.

In the illustrations, the direction of travel may be indicated by a direction arrow.

Text and illustrations

Photos and graphics have been kept neutral wherever possible. If this is not the case, additional information is added underneath the illustration.

Texts and illustrations have been kept neutral wherever possible. If this is not the case, the preceding subtitle takes into account the differences.

Highlighting dangers and warnings

In the operator's manual, all points concerning personal safety and the safe use of the tractor are indicated by the following symbols. Ensure that other users are also made aware of all safety advice.



CAUTION

Instructions which must be strictly followed to prevent any risk of personal injury.

Important: *Instructions which must be strictly followed to prevent damage to the tractor and its environment.*

Note: *Instructions to be followed to ensure more efficient/suitable use of the tractor*

Specific terminology

In this operator's manual, "tool" refers to any equipment hitched to the tractor, whether carried or towed.

Likewise, the term "risk zone" refers to all locations with an increased risk of accident.

- Around the tractor and the tools hitched to the tractor
- Between the tractor and the carried/towed tools
- In the deployment or movement area of the tools

Technical specifications

The technical specifications, dimensions and weights are provided on a non-binding basis. CLAAS reserves the right to modify them as part of the technical development, subject to errors.

Optional and additional equipment

Optional equipment consists of tractor equipment variants. Different variants are available but only one can be fitted at a time.

Additional equipment consists of tractor equipment variants which can be fitted as accessories but which are not part of the tractor's standard equipment.

The two terms refer to the possible variants. Standard equipment and equipment variants may vary according to the country.

VALIDITY OF THE INSTRUCTIONS

5543

This operator's manual is valid for the following tractors:

| Type of tractor | Tractor serial number | |
|-----------------|-----------------------|----|
| | From | To |
| AXION | A3000050 | |

The operator's manual describes the possible equipment for your tractor. Your tractor's equipment is listed in your order confirmation.

UNITS

The units used in this document are in line with international system of units:

| <i>Physical</i> | <i>Unit Name</i> | <i>Symbol of unity</i> | <i>Multiples and sub-multiples of the unit</i> |
|------------------------|-------------------------|-------------------------------|---|
| Size | Metre | m | mm - cm |
| Volume | Cubic meter | m ³ | cm ³ - dm ³ |
| | Liter | l | ml - cl |
| Angle | Degree | ° | |
| Time | Second | s | |
| | Minute | min | |
| | Hour | h | |
| Linear speed | Kilometer per hour | km/h | m/h |
| Rotation speed | Revolution per minute | 1/min | |
| Weight | Kilogram | kg | g |
| Forced | Newton | N | |
| Torque | Newton meter | Nm | |
| Pressure | Pascal | Pa | |
| Power | Watt | W | kW |
| Flow rate | Liter per minute | l/min | |
| Temperature | Degree Celsius | °C | |
| Power voltage | Volt | V | mV |
| Electric intensity | Ampere | A | mA |
| Resistor | Ohm | Ω | kΩ |
| Sound level | Bel | B(A) | dB(A) |









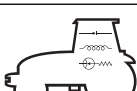



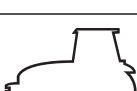
The date format used in this document also complies with the international system:

Year-Month-Day

Example: 2010-07-15

CHAPTER SYMBOLS

5887

| REF | CHAPTERS | SYMBOLS |
|-----|---|---|
| A | IDENTIFICATION - CERTIFICATION - SAFETY |  |
| B | CAB |  |
| C | ELECTRICAL SERVICES |  |
| D | ENGINE |  |
| E | TRANSMISSION |  |
| F | FRONT AXLE |  |
| G | REAR EQUIPMENT |  |
| H | FRONT EQUIPMENT |  |
| I | CLAAS INFORMATION SYSTEM |  |
| J | WHEELS AND TYRES |  |
| K | CHARACTERISTICS |  |
| L | MAINTENANCE |  |
| M | OPERATIONS THAT ARE MANDATORY UNDER THE GUARANTEE |  |

CONTENTS

A - IDENTIFICATION - CERTIFICATION - SAFETY

| | | |
|----------|---|-------------|
| 1 | TRACTOR INFORMATION PLATE | A. 2 |
| 2 | TRACTOR POWER LABEL | A. 4 |
| 3 | MOTOR INFORMATION PLATE | A. 5 |
| 4 | CAB IDENTIFICATION PLATE | A. 6 |
| 5 | EUROPEAN REGULATION | A. 7 |
| 6 | SAFETY | A. 8 |
| 6.1 | SAFETY INSTRUCTIONS | A. 8 |
| 6.2 | SAFETY STICKERS WITH WARNING PICTOGRAMS | A. 23 |

B - CAB

| | | |
|----------|---|--------------|
| 1 | OPERATING AND WORKING ENVIRONMENT | B. 2 |
| 1.1 | INSTRUMENTS AND CONTROLS (DRIVING POSITION) | B. 2 |
| 1.2 | INSTRUMENTS AND CONTROLS (PANEL) | B. 4 |
| 1.3 | STOWAGE AND ACCESSORIES | B. 5 |
| 2 | LIGHTING, INDICATORS AND SAFETY | B. 6 |
| 2.1 | DESCRIPTION | B. 6 |
| 2.2 | LOW/HIGH BEAMS AND HORN | B. 7 |
| 2.3 | WORKING LIGHTS AND ROTATING BEACON | B. 8 |
| 2.4 | OVERHEAD LIGHT | B. 9 |
| 2.5 | REAR VIEW MIRRORS | B. 9 |
| 3 | STARTING CONTACT | B. 11 |
| 4 | MULTIFUNCTION ARMREST | B. 12 |
| 5 | SEATS | B. 13 |
| 5.1 | DRIVER'S SEAT | B. 13 |
| 5.2 | PASSENGER SEAT | B. 15 |
| 6 | STEERING WHEEL | B. 17 |
| 7 | INSTRUMENT PANEL | B. 18 |
| 7.1 | DESCRIPTION | B. 18 |
| 7.2 | OPERATION | B. 20 |
| 7.3 | OPERATION | B. 23 |
| 7.4 | CALIBRATION | B. 24 |
| 8 | DISPLAY | B. 25 |
| 8.1 | TRANSMISSION DISPLAY | B. 25 |

| | | |
|-----------|--|--------------|
| 9 | HINGED PANELS AND WINDOWS | B. 26 |
| 10 | SIGHT | B. 30 |
| 11 | HEATING - VENTILATION - MANUAL AIR CONDITIONING | B. 31 |
| 11.1 | DESCRIPTION | B. 31 |
| 11.2 | OPERATION | B. 31 |
| 12 | HEATING/VENTILATION/AUTOMATIC CLIMATE CONTROL | B. 36 |
| 12.1 | DESCRIPTION | B. 36 |
| 12.2 | OPERATION | B. 36 |
| 13 | CAB SUSPENSION | B. 40 |

C - ELECTRICAL SYSTEM

| | | |
|----------|--|--------------|
| 1 | CHARACTERISTICS | C. 2 |
| 2 | TRAILER/IMPLEMENT LIGHT SOCKET | C. 3 |
| 3 | ELECTRIC CABINET SUPPLY SOCKET | C. 5 |
| 4 | EVENT COUNTER SOCKET | C. 6 |
| 5 | ISO SOCKET | C. 7 |
| 6 | ISOBUS SOCKET | C. 8 |
| 7 | PROVISION FOR THE INSTALLATION OF A CONTROL CASING IN THE CAB | C. 9 |
| 7.1 | FITTING BOX MOUNTING | C. 9 |
| 7.2 | CABLE ROUTING | C. 9 |
| 8 | BATTERY | C. 10 |
| 8.1 | BATTERY COMPARTMENT | C. 10 |
| 8.2 | BATTERY MASTER SWITCH | C. 11 |
| 9 | FUSES AND RELAYS | C. 12 |
| 9.1 | RECOMMENDATIONS | C. 12 |
| 9.2 | CAB-MOUNTED SERVICES FUSE BOX | C. 12 |
| 9.3 | CAB TOP FUSE BOX | C. 15 |
| 9.4 | PRIMARY SERVICES FUSE BOX | C. 18 |

D - ENGINE

| | | |
|----------|------------------------------|-------------|
| 1 | CHARACTERISTICS | D. 2 |
| 2 | DISPLAYS | D. 4 |
| 2.1 | INSTRUMENT PANEL | D. 4 |
| 3 | SAFETY | D. 5 |
| 3.1 | OPERATION | D. 5 |
| 3.2 | INSTRUMENT PANEL | D. 5 |
| 3.3 | RECOMMENDATIONS | D. 5 |
| 4 | ENGINE HOOD | D. 7 |
| 4.1 | ONE-PIECE HOOD | D. 7 |
| 4.2 | SIDE PANELS | D. 7 |

| | | |
|----------|--|--------------|
| 5 | ENGINE CONTROL | D. 9 |
| 5.1 | STARTING THE ENGINE | D. 9 |
| 5.2 | USING THE ACCELERATOR PEDAL AND LEVER | D. 13 |
| 5.3 | STOPPING THE ENGINE | D. 15 |
| 6 | CLAAS POWER MANAGEMENT | D. 16 |
| 7 | FUEL | D. 17 |
| 7.1 | RECOMMENDATIONS | D. 17 |
| 7.2 | BLEEDING AIR FROM THE INJECTION SYSTEM | D. 18 |

E - TRANSMISSION

GEARBOX

| | | |
|----------|---|--------------|
| 1 | CHARACTERISTICS | E. 4 |
| 2 | FORWARD SPEEDS | E. 5 |
| 3 | DISPLAY | E. 25 |
| 3.1 | TRANSMISSION DISPLAY | E. 25 |
| 3.2 | INSTRUMENT PANEL | E. 25 |
| 4 | SAFETY | E. 27 |
| 4.1 | REVERSER NEUTRAL | E. 27 |
| 4.2 | TRANSMISSION NEUTRAL | E. 29 |
| 4.3 | PROTECTION OF MECHANICAL PARTS | E. 30 |
| 5 | STARTING THE TRACTOR | E. 32 |
| 5.1 | TRANSMISSION DISPLAY | E. 32 |
| 5.2 | CLUTCH | E. 32 |
| 5.3 | SELECTION OF MOVEMENT DIRECTION | E. 33 |
| 5.4 | REVERSER PROGRESSIVITY ADJUSTMENT | E. 34 |
| 5.5 | COUPLING/DECOUPLING FORWARD/REVERSE GEARS | E. 36 |
| 6 | MANUAL GEAR CHANGES | E. 38 |
| 6.1 | START RATIO | E. 38 |
| 6.2 | WORK MODE | E. 39 |
| 6.3 | ROAD MODE | E. 40 |
| 7 | AUTOMATIC GEAR CHANGES | E. 42 |
| 7.1 | SKIP SHIFT | E. 42 |
| 7.2 | AUTOMATIC SPEED ADAPTATION (SPEED MATCHING) | E. 42 |
| 7.3 | MANOEUVRING GEAR | E. 43 |
| 7.4 | HEXACTIV | E. 45 |
| 8 | RATIO MANAGEMENT | E. 51 |
| 8.1 | OPERATION | E. 51 |
| 8.2 | TRANSMISSION DISPLAY | E. 51 |

| | | |
|----------|-------------------------------|--------------|
| 9 | CREEP GEAR RANGE | E. 52 |
| 9.1 | OPERATION | E. 52 |
| 9.2 | OPERATION | E. 52 |

REAR AXLE

| | | |
|----------|---|--------------|
| 1 | CHARACTERISTICS | E. 54 |
| 2 | PROTECTION OF MECHANICAL PARTS | E. 56 |
| 2.1 | OPERATION | E. 56 |
| 2.2 | INSTRUMENT PANEL | E. 56 |
| 2.3 | TRANSMISSION DISPLAY | E. 56 |
| 3 | DIFFERENTIAL LOCK | E. 57 |
| 3.1 | RECOMMENDATIONS | E. 57 |
| 3.2 | OPERATION | E. 57 |
| 3.3 | AUTOMATIC MODE | E. 57 |
| 3.4 | PERMANENT MODE | E. 58 |
| 4 | BRAKES | E. 60 |
| 4.1 | SERVICE BRAKES | E. 60 |
| 4.2 | HANDBRAKE (AUXILIARY AND PARKING BRAKE) | E. 60 |
| 5 | TRAILER BRAKE | E. 63 |
| 5.1 | HYDRAULIC BRAKE | E. 63 |
| 5.2 | PNEUMATIC BRAKE | E. 64 |

F - FRONT AXLE

| | | |
|----------|---|--------------|
| 1 | CHARACTERISTICS | F. 2 |
| 2 | PROTECTION OF MECHANICAL PARTS | F. 5 |
| 2.1 | OPERATION | F. 5 |
| 2.2 | INSTRUMENT PANEL | F. 5 |
| 3 | FRONT AXLE ENGAGEMENT | F. 6 |
| 3.1 | OPERATION | F. 6 |
| 3.2 | AUTOMATIC MODE | F. 6 |
| 3.3 | PERMANENT MODE | F. 7 |
| 4 | DIFFERENTIAL LOCK | F. 8 |
| 4.1 | RECOMMENDATIONS | F. 8 |
| 4.2 | OPERATION | F. 8 |
| 4.3 | AUTOMATIC MODE | F. 8 |
| 4.4 | PERMANENT MODE | F. 9 |
| 5 | SUSPENDED FRONT AXLE | F. 11 |
| 5.1 | OPERATION | F. 11 |
| 5.2 | FIXED MODE | F. 11 |
| 5.3 | AUTOMATIC MODE | F. 12 |

G - REAR EQUIPMENT

HYDRAULIC SYSTEMS

| | | |
|----------|--|--------------|
| 1 | CHARACTERISTICS | G. 4 |
| 2 | AUXILIARY SPOOL VALVES | G. 5 |
| 2.1 | ASSOCIATION BETWEEN CONTROLS/REAR PRESSURE CONNECTORS | G. 5 |
| 2.2 | PRESSURE CONNECTORS | G. 6 |
| 2.3 | CONTROLS | G. 8 |
| 2.4 | CONTROL LEVERS | G. 8 |
| 2.5 | ADJUSTING FLOW RATE FOR MECHANICALLY-CONTROLLED SPOOL VALVES | G. 10 |
| 3 | POWER BEYOND | G. 11 |
| 3.1 | DESCRIPTION | G. 11 |
| 3.2 | OPERATION | G. 11 |
| 3.3 | OPERATION | G. 11 |
| 4 | STATIONARY WORKING | G. 12 |
| 4.1 | REQUIREMENTS | G. 12 |

REAR LIFT

| | | |
|-----------|---|--------------|
| 1 | CHARACTERISTICS | G. 14 |
| 2 | CONTROLS | G. 15 |
| 3 | SAFETY | G. 17 |
| 3.1 | PROTECTION OF MECHANICAL PARTS | G. 17 |
| 3.2 | WARNING LIGHT | G. 17 |
| 3.3 | ROAD TRANSPORT SAFETY | G. 17 |
| 4 | USING THE LINKAGE | G. 19 |
| 5 | MODE SELECTION | G. 20 |
| 6 | POSITION CONTROL | G. 21 |
| 7 | FORCE CONTROL | G. 22 |
| 8 | UPPER LIMIT | G. 24 |
| 9 | LOWERING SPEED | G. 25 |
| 10 | TRANSPORT DAMPER | G. 26 |
| 11 | ACTIVE WHEEL SLIP MANAGEMENT | G. 27 |
| 11.1 | OPERATION | G. 27 |
| 11.2 | ADJUSTMENT | G. 27 |
| 11.3 | OPERATION | G. 28 |
| 12 | EXTERNAL CONTROLS | G. 29 |
| 12.1 | OPERATION | G. 29 |
| 12.2 | OPERATION | G. 29 |

REAR POWER TAKE-OFF

| | | |
|-----------|--|--------------|
| 1 | CHARACTERISTICS | G. 32 |
| 2 | RECOMMENDATIONS | G. 33 |
| 3 | CONTROLS | G. 34 |
| 4 | DISPLAY | G. 35 |
| 5 | PTO SPEED SELECTION | G. 36 |
| 6 | OPERATION | G. 37 |
| 7 | EXTERNAL CONTROLS | G. 38 |
| 8 | OPERATION | G. 39 |
| 9 | PTO AUTOMATION | G. 40 |
| 9.1 | OPERATION | G. 40 |
| 9.2 | ADJUSTMENT | G. 40 |
| 10 | POWER TAKE-OFF END FITTING | G. 41 |
| 11 | CONNECTING IMPLEMENTS TO THE POWER TAKE-OFF | G. 42 |
| 12 | STATIONARY WORKING | G. 43 |
| 12.1 | REQUIREMENTS | G. 43 |

REAR HITCH

| | | |
|----------|--------------------------------|--------------|
| 1 | CHARACTERISTICS | G. 46 |
| 2 | RECOMMENDATIONS | G. 48 |
| 3 | ADJUSTABLE LINKS | G. 50 |
| 4 | UPPER LINK | G. 51 |
| 4.1 | MECHANICAL UPPER ROD | G. 51 |
| 4.2 | UPPER TOP LINKAGE | G. 51 |
| 5 | AUTOMATIC HOOKS | G. 52 |
| 6 | STABILISERS | G. 54 |
| 6.1 | OPERATION | G. 54 |
| 6.2 | MECHANICAL STABILISERS | G. 54 |
| 6.3 | SELF-LOCKING STABILISERS | G. 54 |

| | | |
|----|--------------------------------------|-------|
| 7 | DRAW BAR COUPLINGS | G. 55 |
| 8 | TOW HOOK | G. 57 |
| 9 | SWINGING DRAWBAR | G. 58 |
| 10 | AUTOMATIC PICK-UP HITCH | G. 60 |

H - FRONT EQUIPMENT

HYDRAULIC SYSTEMS

| | | |
|-----|--|-------|
| 1 | CHARACTERISTICS | H. 4 |
| 2 | FRONT PRESSURE TAPS CONTROLLED BY SPOOL VALVE 3 | H. 5 |
| 2.1 | ASSOCIATION BETWEEN CONTROLS/FRONT PRESSURE CONNECTORS | H. 5 |
| 2.2 | PRESSURE CONNECTORS | H. 5 |
| 2.3 | OPERATION | H. 7 |
| 2.4 | FLOW CONTROL | H. 8 |
| 3 | FRONT PRESSURE TAPS CONTROLLED BY SPOOL VALVE 7 | H. 9 |
| 3.1 | ASSOCIATION BETWEEN CONTROLS/FRONT PRESSURE CONNECTORS | H. 9 |
| 3.2 | PRESSURE CONNECTORS | H. 9 |
| 3.3 | SAFETY | H. 11 |
| 3.4 | CONTROLS | H. 12 |
| 3.5 | PRELIMINARY OPERATIONS | H. 12 |
| 3.6 | OPERATION | H. 13 |
| 3.7 | MANAGEMENT OF ELECTROHYDRAULIC SPOOL VALVES | H. 14 |

FRONT LINKAGE

| | | |
|-----|--|-------|
| 1 | CHARACTERISTICS | H. 20 |
| 2 | FRONT LINKAGE CONTROLLED BY SPOOL VALVE 1 | H. 21 |
| 2.1 | CONTROLS | H. 21 |
| 2.2 | SAFETY | H. 21 |
| 2.3 | PRELIMINARY OPERATIONS | H. 22 |
| 2.4 | OPERATION | H. 23 |
| 3 | FRONT LINKAGE CONTROLLED BY SPOOL VALVE 6 | H. 25 |
| 3.1 | CONTROLS | H. 25 |
| 3.2 | SAFETY | H. 26 |
| 3.3 | PRELIMINARY OPERATIONS | H. 27 |
| 3.4 | OPERATION | H. 28 |
| 3.5 | EXTERNAL CONTROLS | H. 29 |
| 4 | TRANSPORT DAMPER | H. 31 |
| 5 | 3-POINT HITCH | H. 32 |
| 5.1 | LOWER LINKS | H. 32 |
| 5.2 | UPPER LINK | H. 33 |
| 5.3 | HITCHING AND UNHITCHING THE TOOL | H. 33 |

FRONT POWER TAKE-OFF

| | | |
|---|--|-------|
| 1 | CHARACTERISTICS | H. 38 |
| 2 | DISPLAY | H. 39 |
| 3 | RECOMMENDATIONS | H. 40 |
| 4 | FRONT POWER TAKE-OFF ENGAGEMENT | H. 42 |
| 5 | STOP OF THE FRONT POWER TAKE-OFF | H. 43 |

FRONT LOADER

| | | |
|---|---|-------|
| 1 | FITTING A FRONTAL LOADER ADAPTATION FRAME | H. 46 |
| 2 | OPERATION | H. 48 |

I - CLAAS INFORMATION SYSTEM

| | | |
|-----|------------------------------|-------|
| 1 | DESCRIPTION | I. 2 |
| 2 | OPERATION | I. 4 |
| 2.1 | OPERATION | I. 4 |
| 2.2 | MAIN MENU | I. 5 |
| 2.3 | HYDRAULIC MENU | I. 6 |
| 2.4 | ON-BOARD COMPUTER MENU | I. 8 |
| 2.5 | TRANSMISSION WINDOW | I. 10 |
| 2.6 | CONSUMPTION MENU | I. 12 |
| 2.7 | MAINTENANCE MENU | I. 13 |
| 2.8 | CONFIGURATION MENU | I. 18 |

J - WHEELS AND TYRES

| | | |
|-----|--------------------------|-------|
| 1 | TYRES | J. 2 |
| 1.1 | RECOMMENDATIONS | J. 2 |
| 1.2 | INFLATION PRESSURE | J. 3 |
| 1.3 | LOAD INDEX | J. 4 |
| 1.4 | SPEED CODE | J. 5 |
| 2 | TRACK WIDTHS | J. 6 |
| 2.1 | SETTING THE TRACK | J. 6 |
| 2.2 | FRONT TRACKS | J. 8 |
| 2.3 | REAR TRACKS | J. 24 |
| 2.4 | TYRE COMBINATIONS | J. 42 |
| 3 | WHEELS | J. 46 |
| 3.1 | GENERAL | J. 46 |
| 3.2 | DUAL WHEELS | J. 46 |

K - CHARACTERISTICS

| | | |
|-----|-------------------------------------|-------|
| 1 | DIMENSIONS | K. 2 |
| 2 | WEIGHT | K. 3 |
| 3 | LOAD-BEARING CAPABILITIES | K. 4 |
| 4 | MAXIMUM TOW WEIGHT AUTHORIZED | K. 5 |
| 5 | CAPACITIES | K. 6 |
| 6 | BALLAST | K. 8 |
| 6.1 | BALLASTING AVAILABLE | K. 8 |
| 6.2 | TRACTOR BALANCING | K. 13 |
| 7 | CAB COMFORT | K. 16 |
| 7.1 | SOUND LEVEL | K. 16 |
| 7.2 | VIBRATION LEVEL | K. 17 |

L - MAINTENANCE

| | | |
|-----|--|-------|
| 1 | RECOMMENDATIONS | L. 2 |
| 2 | TOWING | L. 8 |
| 3 | TRANSPORT | L. 10 |
| 4 | USING A JACK | L. 11 |
| 5 | REPLACING A WHEEL | L. 12 |
| 6 | LOADING AND STOWING THE TRACTOR | L. 13 |
| 7 | STORAGE | L. 14 |
| 8 | DECOMMISSIONING AND DESTRUCTION | L. 16 |
| 9 | FREQUENCIES | L. 17 |
| 9.1 | SUMMARY TABLE | L. 17 |
| 9.2 | OPERATIONS | L. 20 |
| 10 | BLEEDING AIR FROM THE INJECTION SYSTEM | L. 67 |
| 11 | MAINTENANCE LOGBOOK | L. 68 |

M - OPERATIONS THAT ARE MANDATORY UNDER THE GUARANTEE

| | | |
|-----|---|------|
| 1 | OPERATIONS MANDATORY UNDER THE TERMS OF THE CONTRACTUAL GUARANTEE | M. 2 |
| 1.1 | PRE-DELIVERY INSPECTION | M. 2 |
| 1.2 | HANDING OVER TO THE CUSTOMER | M. 2 |
| 1.3 | MANDATORY ROUTINE MAINTENANCE | M. 2 |
| 1.4 | MANDATORY INSPECTIONS | M. 3 |

A - IDENTIFICATION - CERTIFICATION - SAFETY

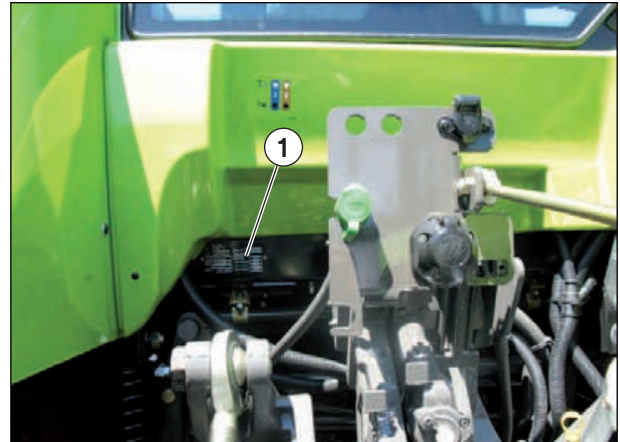




1 TRACTOR INFORMATION PLATE

6623

In any mail or order, always indicate the tractor identification number, tractor model, and engine serial number. The tractor information plate (1) is located on the left, behind the cab.



841msn44m

| | |
|--|---------------------------------------|
| | Type : |
| | Vehicle identification number: |

- A – Type of tractor.
- B – Tractor identification number (This number is also stamped on the right-hand side of the front chassis).
- C – Reception number per CE type.
- D – Maximum acceptable weight (kg).
- E – Maximum acceptable load on the front axle according to the tires (kg).
- F – Maximum load acceptable on the rear axle according to the tires (kg).
- G – Acceptable tow weight without brake (kg).
- H – Acceptable tow weight with independent brake (kg).
- I – Acceptable tow weight with inertia brake (kg).
- J – Acceptable tow weight with power brakes (hydraulic/pneumatic) (kg).

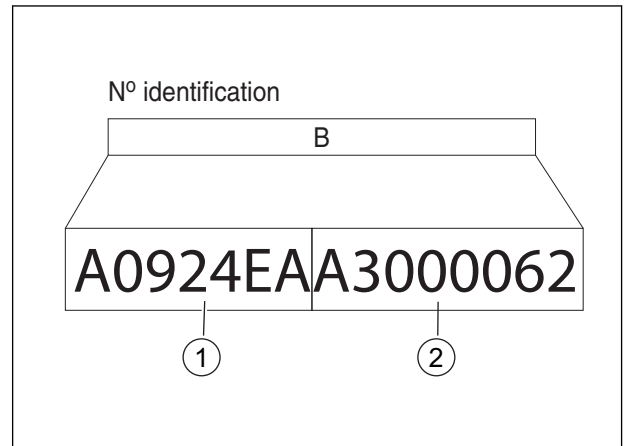
1

| CLAAS | | | |
|---|---|-----------------------------------|---|
| Type | A | Essieu AR | F |
| N° CEE | C | Masse remorquable admissible (Kg) | |
| N° identification | B | sans frein | G |
| Masse totale admissible (Kg) (suivant pneumatiques) | | frein mécanique | H |
| | D | frein à inertie | I |
| Essieu AV | E | freins assistés | J |

841hsn50m



The tractor's identification number (B) is composed of the regulation type (1) and serial number (2) of the tractor (the example given opposite is completely fictitious).



841hsn03m

Tractor regulation type

The regulation type (1) is broken down in the following manner:

| Type of tractor | Engine power code | Number of drive wheels | Cabin type | Maximum tractor speed |
|-----------------|--|------------------------|--------------------|--------------------------|
| A09 | 5: AXION 810 6: AXION 820 2: AXION 830 3: AXION 840 4: AXION 850 | 4 | E: Suspended cabin | A: 40 km/h C: 50 km/h |

Tractor serial number

The tractor's serial number (2) is composed of the tractor type "A30" followed by a 5 digit number.

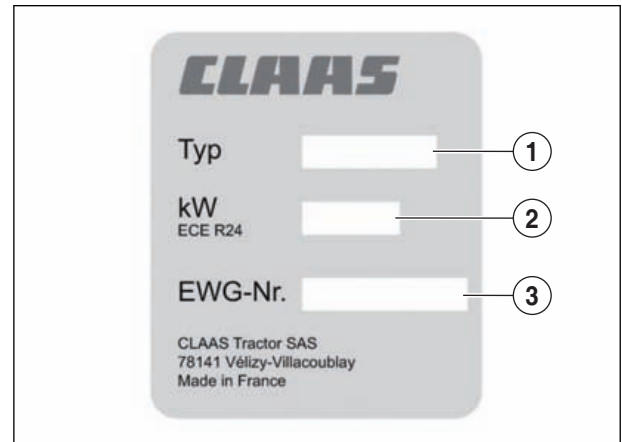


2 TRACTOR POWER LABEL

6564

A label indicating the tractor's power is affixed to the left-hand side of the cab's rear apron (according to the national legislation in force in the country where the tractor is used).

- 1 – Tractor type.
- 2 – Power.
- 3 – EEC certification number.



841hsn04m



3 MOTOR INFORMATION PLATE

6565

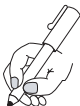
Remove the cover (2) located on the right side of the engine to expose the identification plate (3).
This plate contains the engine type and serial number.



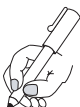
101hsn04



101hsn00



Type :

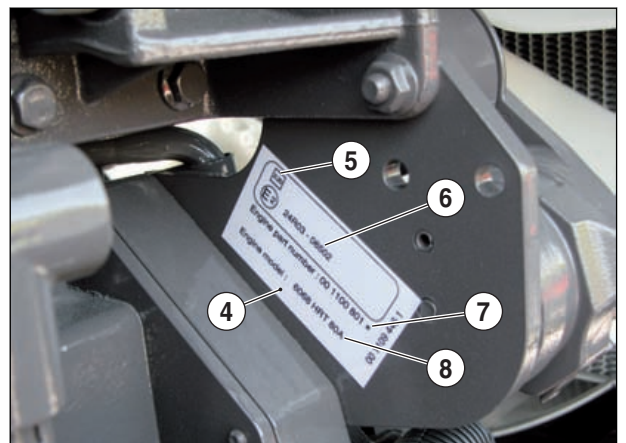


Serial number:

The emissions (4) certification label is located on the right-hand side of the engine.

This label provides information on the engine (Manufacturer data).

- 5- The rate of absorption.
- 6- The certification Nr.
- 7- Engine serial n°.
- 8- The type of engine.



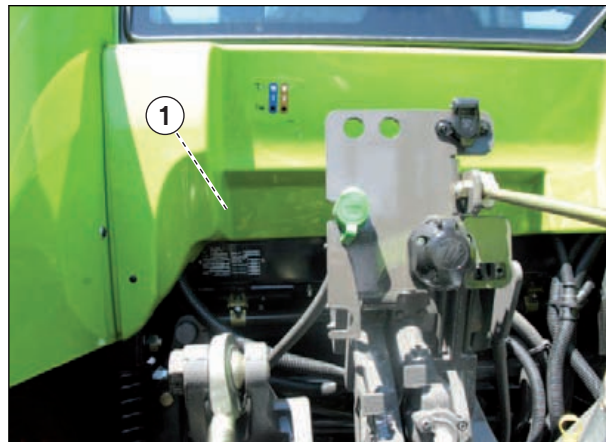
101hsn14



4 CAB IDENTIFICATION PLATE

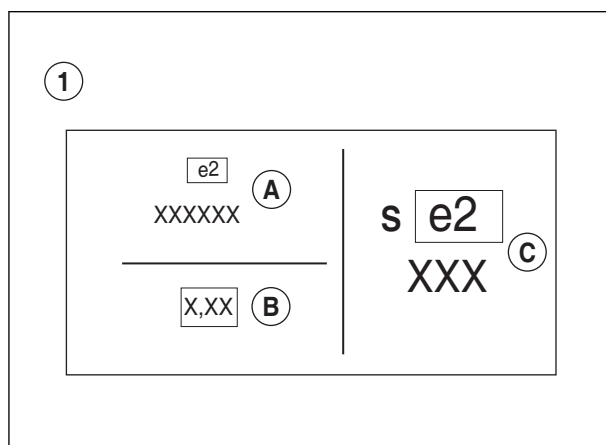
6566

Plate (1) is located behind the rear panel.



841msn03m

- A – Reception number per EMC type (Electromagnetic compatibility).
- B – Absorption ratio.
- C – Homologation number per cab type.



841hsn01m



5 EUROPEAN REGULATION

6552

CLAAS tractors put in circulation in the European Community meet modified European Directive 2003/37. A certificate of conformity is supplied when each tractor is delivered. Hence, the tractor's manufacturer ensures conformance of the tractor with the CE directive mentioned previously upon initial marketing.

In countries outside the European Union, apply the appropriate national provisions.



6 SAFETY

6.1 SAFETY INSTRUCTIONS

6.1.1 Appropriate use

6568

CLAAS tractors and farm tractors have been designed exclusively for professional use in line with the recognised rules governing farming practices and agricultural work.

CLAAS farm tractors have been designed and adapted to tow, move or carry tools / equipment / loads authorised by the manufacturer, and to control certain tools or compact using tools (weights) authorised by the manufacturer in the field and on public highways in line with the provisions of the highway code.

The agricultural tractor must be used, serviced and overhauled only by persons with perfect knowledge of the tractor, and informed of any risks.

A use conforming with the purpose presumes compliance with the instructions in the user manual, as well as rules of use, maintenance, and overhaul indicated by the manufacturer.

The user and owner is liable for complying with particular accident prevention instructions, as well as general rules in terms of safety, occupational medicine, and road legislation.

Any use other than that defined above is considered to be non-compliant with the purpose, and waives the manufacturer from any liability in case of damage ; the user will support alone any risks resulting from such a use.

Please call CLAAS for detailed and customised information to ensure compliant use in particular cases.

6.1.2 Use non conformant with the purpose

6569

Any use not foreseen by the manufacturer shall be considered to be inappropriate, and therefore incorrect. The manufacturer waives any liability in case of damage ; the user will support alone any risks resulting from such a use.

Examples of incorrect use of CLAAS tractors / farm tractors:

- Use of surfaces and spaces not defined as being work or maintenance zones in the user manual.
- Adjustment, cleaning, and maintenance operations contrary to the indications in the user manual.
- Performing repair and maintenance work while the system is on and / or the engine running.
- Non-compliance with the warnings on the tractor and in the user manual.
- Overhauling and repairing by staff not trained to this effect.
- Arbitrary modifications made to the tractor.
- Installation of unauthorised optional equipment.
- Use of spare parts not manufactured by CLAAS.
- Use of devices / equipment not authorised by the manufacturer.
- Use of the tractor to participate in sports events.
- Exceeding the total technical weight acceptable.
- Transporting persons outside of the seats intended for this purpose (Depending on the tractor equipment, a passenger seat may be used to transport one person).



6.1.3 Precautions to be taken before starting up

5747

Caution is the best guarantee against any risk of accident. Before starting the operation of the tractor, read the operator's manual and all safety tips. Take into account all this information when using the tractor. This rule applies to everyone who uses the tractor involved in its maintenance, maintenance or inspections.

When the tractor is used by a person other than the owner, the latter must provide all explanations necessary to ensure risk-free work. The driver's position must be clean (Dashboard - Steering wheel - Floor - Pedals - Windscreen - Rear view mirrors - etc.).



001hsn25

Foosteps must always be clean (no mud) to avoid slipping when climbing or descending.

To climb into the tractor:

- Turn towards the driving position.
- Open the left-/right-hand door (Depending on equipment fit).
- When climbing the steps, always use the handles/handrails provided:
 - Only move one hand when both feet are supported.
 - Only move one foot when gripping with both hands.
- Sit in the driver's seat.
- Close the door (Depending on equipment fit).
- Buckle your seatbelt.

Do not climb into/out of a moving tractor.

Do not use the front wheels or any other accessory to climb into or out of the tractor.

Before starting the engine, make sure that all controls are in the neutral position, particularly the power take-off lever.

Only run the engine in well ventilated areas.

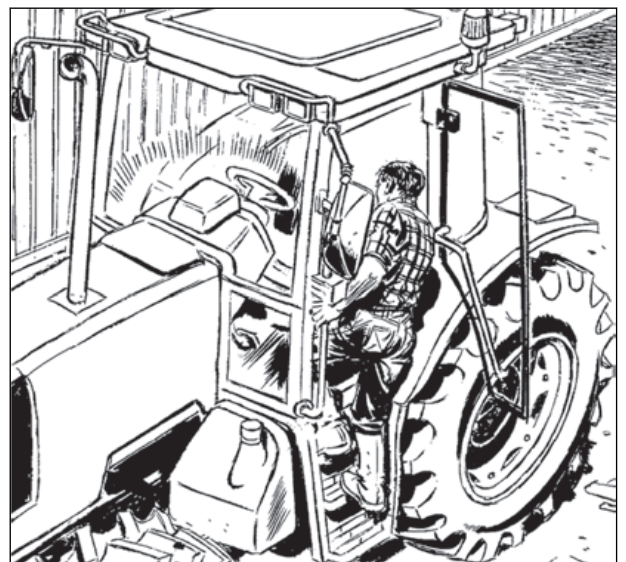
Make sure there is nobody nearby before starting the tractor.

Fully release the handbrake before moving the tractor forward.

Do not start work if the tractor is not working properly.

To climb down the tractor:

- Check that all commands are in neutral.
- Lower the tools against the ground.
- If required, stop the engine.
- Apply the handbrake.
- Remove your seatbelt.
- Open the door (Depending on equipment fit).
- Turn round to face the driving position when leaving the tractor.
- When descending the steps, always use the handles/handrails provided:



001hsn26



- Only move one hand when both feet are supported.
- Only move one foot when gripping with both hands.
- Close the door (Depending on equipment fit).

Do not exit the tractor by jumping.

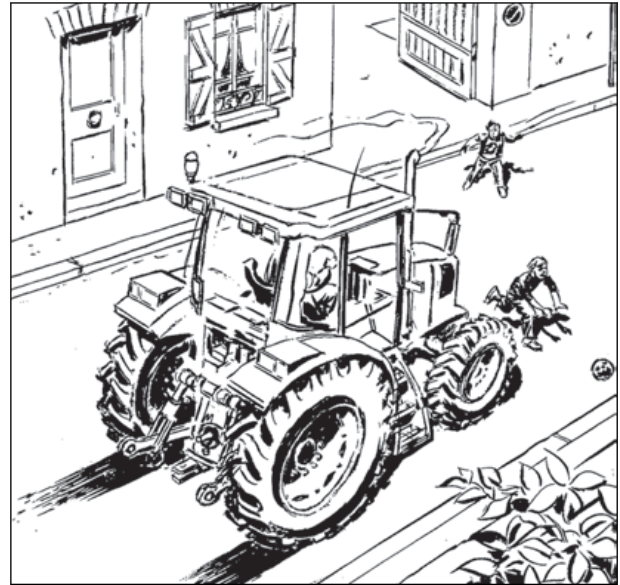
6.1.4 Tractor state

5748

Maintaining the tractor in the best possible condition, by carrying out all routine maintenance (oil changes, level checks, overhauls, adjustments and thorough cleaning) will allow it to be used in the safest and most profitable way.

Check the following items first:

- High temperature components:
 - Check that airborne particles such as straw, grass, wood chips etc., do not accumulate in high temperature areas.
 - Clear debris from around the engine and the exhaust system.
 - For tools attached to the front or the side of the tractor, inspect and clean the areas around the attachments for the various supports.
- Brakes:
 - Check that the brakes work properly.
 - Check the operation of the hand brake and foot brake.
 - Check that the front axle of the tractor is engaged when the brakes are actuated (service brakes or handbrake) (For tractors with 4 wheel drive).
- Steering:
 - Check the operation of the hydrostatic steering.
- Transmission:
 - Check the transmission fluid level (especially if external services are used).
- Hydraulic system:
 - Check the condition of the system (unions, pipes, hoses), particularly the hoses to the steering actuators.
- Electrical system:
 - Check the condition of the electrical system (batteries, wiring, headlights, indicator lights, hazard lights, rotating beacons, windscreen wipers, etc.).
- Lighting - indicators:
 - All lighting and indicating equipment must not only be in working order, but must be fully visible; clean them.
 - Carry a spare set of bulbs.
 - Replace any defective element.



001hsn27

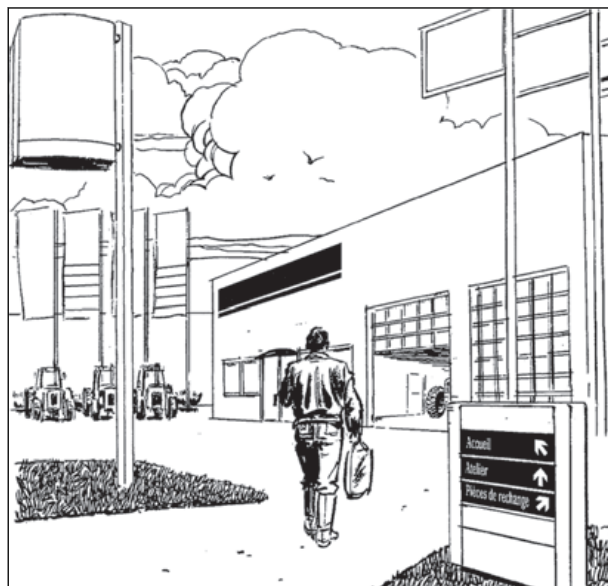


001hsn28



Only fit genuine CLAAS parts. Your CLAAS approved shop is available to supply all parts and products required for maintaining your tractor in perfect condition.

Using components not authorised by CLAAS reduces the machine operating capacity, as well as driving and operating safety.



001hsn29

6.1.5 Adjustment or maintenance tasks - repairs

6.1.5.1 General rule

5749

Stay away from the tractor's hot parts. For example:

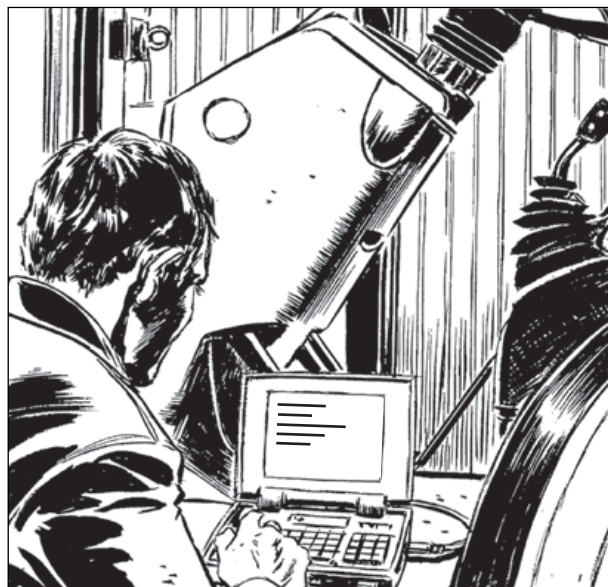
- Engine
- Exhaust
- Transmission

For any intervention on hot or pointed parts, wear gloves or use a rag. Wear safety goggles.

Only carry out operations well within your capabilities. A number of simple adjustments are described in the manual (clutch and brake free travel, etc.). Never attempt to work on your tractor unless you have perfectly understood the procedure and have all the basic equipment required.

Removing, disassembling, reassembling and refitting vital parts (e.g. cab, engine, transmission or front axle) require specific equipment. Only the use of adapted equipment allows safe intervention while guaranteeing to achieve the results expected.

Please refer to CLAAS approved workshops for all these interventions. CLAAS approved workshops have specific tools, the skills required and original spare parts. To secure your repairs and adjustments, call a CLAAS approved workshop.



001hsn30

6.1.5.2 Use of axle stands

5835

If the tractor is to be placed on axle stands, always work on a flat, horizontal, hard surface.



Check the axle stands are suitable for the load. For information, refer to chapter K to check that the props and the lifting device are suited to the load to be lifted.

- To place the rear axle on axle stands, position the axle stands under the rear axle tubes.
- To place the front axle on axle stands, position the axle stands under the front axle on either side of the differential housing.

4-4-wheel drive tractor:

- If the rear axle is on stands, do not start the engine (Risk of the tractor moving if the brakes are activated (foot brake or hand brake)).
- If the rear axle is laid on props, and if the engine must be started, the front axle must also be laid on props.



001hsn31

6.1.5.3 Electrical services

5753

Knowledge and skill are required to work on the electrical system. If required (installation of miscellaneous accessories, radio accessories, etc.), call your CLAAS approved workshop .

Moreover:

- Always disconnect the battery negative terminal before working on the electrical system.
- Never replace a defective fuse with a larger calibre fuse. Risk of fire.
- Never intervene on elements such as the alternator or fan when the engine is running.
- Comply with safety instructions when welding (See chapter L).



001hsn32

- Avoid generating sparks or open flames next to the battery.
- Handle the battery with great care because it contains sulphuric acid that must not come into contact with the eyes or skin. Wear gloves and goggles. In case of projection of acid on your skin or in your eyes, thoroughly rinse with water immediately, and call a doctor.

Use a torch to check the level of electrolyte.

Do not check the battery's charge by placing a metallic object between the terminals. Use a voltmeter or acidimeter.

6.1.5.4 Fuel

6574

- Always switch off the engine before refuelling.
- Do not smoke while refuelling and stay away from any flame or source of sparks.
- Before filling the fuel tank, check that no cell phone is nearby.

This as a preview PDF file from best-manuals.com



Download full PDF manual at best-manuals.com