

Liftall 1253/1202/1553/1554

Service Manual - Liftall 1253/1202/1553/1554

[Section 1 - General Information](#)

[Section 2 - Care and Safety](#)

[Section 3 - Routine Maintenance](#)

[Section B - Body and Framework](#)

[Section C - Electrics](#)

[Section D - Controls](#)

[Section E - Hydraulics](#)

[Section F - Transmission](#)

[Section G - Brakes](#)

[Section K - Engine](#)



Publication No.
9813/1650



Copyright © 2007 JCB SERVICE. All rights reserved. No part of this publication may be reproduced, stored in a retrieval system, or transmitted in any form or by any other means, electronic, mechanical, photocopying or otherwise, without prior permission from JCB SERVICE.

General Information

Service Manual - Liftall 1253/1202/1553/1554

[Section 1 - General Information](#)

[Section 2 - Care and Safety](#)

[Section 3 - Routine Maintenance](#)

[Section B - Body and Framework](#)

[Section C - Electrics](#)

[Section D - Controls](#)

[Section E - Hydraulics](#)

[Section F - Transmission](#)

[Section G - Brakes](#)

[Section K - Engine](#)



Publication No.
9813/1650



Copyright © 2007 JCB SERVICE. All rights reserved. No part of this publication may be reproduced, stored in a retrieval system, or transmitted in any form or by any other means, electronic, mechanical, photocopying or otherwise, without prior permission from JCB SERVICE.



Notes:



Section 1 - General Information

Contents	Page No.
General Information	
Machine Identification	1-1
Machine Identification Plate	1-1
Load Chart	1-3
Torque	1-7
Torque Settings	1-7
Tightening Torque Values for Metric Hardware	1-8
Tightening Torque Values for Hydraulic Hoses	1-8
Tightening Torque Values for Hydraulic Adaptor	1-8
Service Tools	1-9
Numerical List	1-13
Tool Detail Reference	1-15
Section B - Body and Framework	1-15
Section C - Electrics	1-19
Section E - Hydraulics	1-20
Section K - Engine	1-34

General Information

Machine Identification

Machine Identification Plate

Your machine has an identification plate **X** mounted on the Chassis as shown. The serial numbers of the machine and its major units are stamped on the plate.

The serial number of each major unit is also stamped on the unit itself. If a major unit is replaced by a new one, the serial number on the identification plate will be wrong. Either stamp the new number of the unit on the identification plate, or simply stamp out the old number. This will prevent the wrong number being quoted when replacement parts are ordered.

The machine and engine serial numbers can help identify exactly the type of equipment you have → [Fig 1.](#) ([□ 1-1](#)).

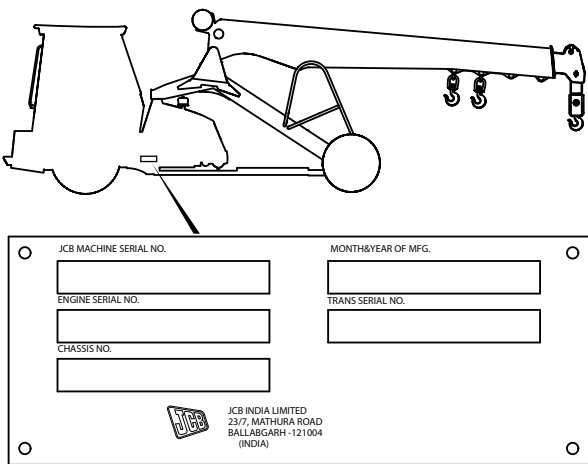


Fig 1.

P009450

Unit Identification

Engine Serial Plate

The engine serial number is stamped on a label which is fastened to the left side of the cylinder block (looking from the rear) → [Fig 2.](#) ([□ 1-1](#)).

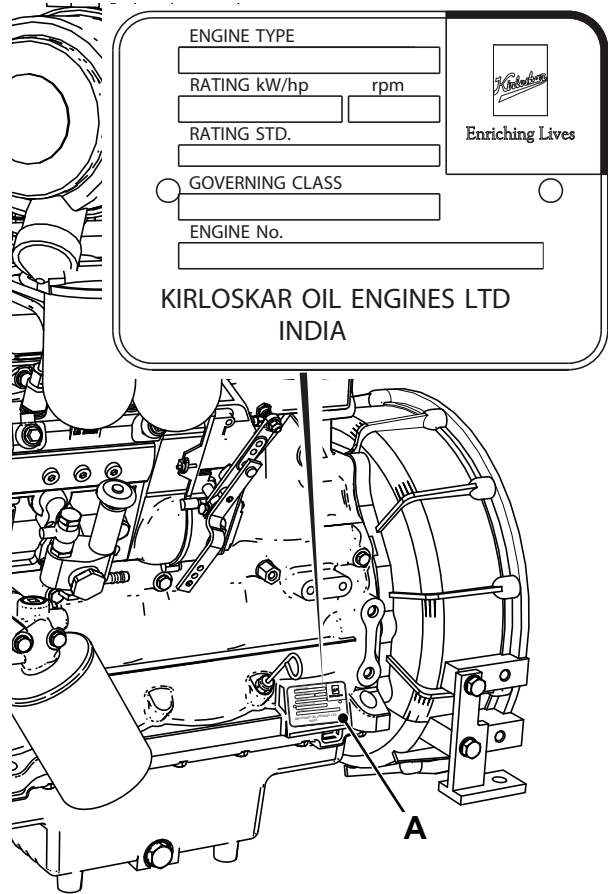


Fig 2.

D023815

Transmission Axle Serial Plate

The transmission axle serial number is stamped on a plate mounted to the front face of the axle, as shown → [Fig 3.](#) ([□ 1-2](#)).

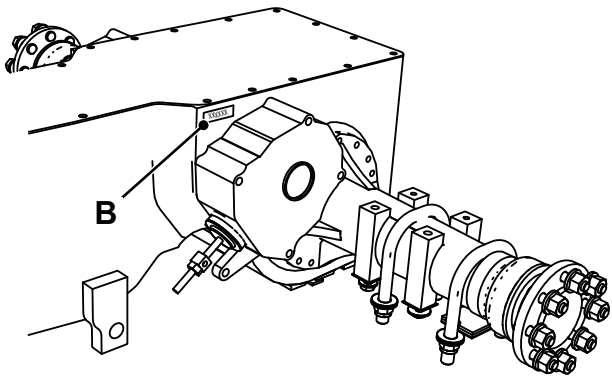


Fig 3.

D025810

Hydraulic Pump Serial Plate

The hydraulic pump serial number is stamped on a label which is mounted on the pump → [Fig 4.](#) (□ 1-2).

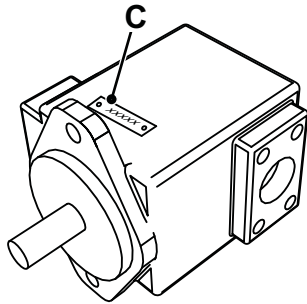


Fig 4.

D025820

Winch Motor Serial Plate

The winch motor serial number is stamped on a label **D** which is mounted on motor → [Fig 5.](#) (□ 1-2).

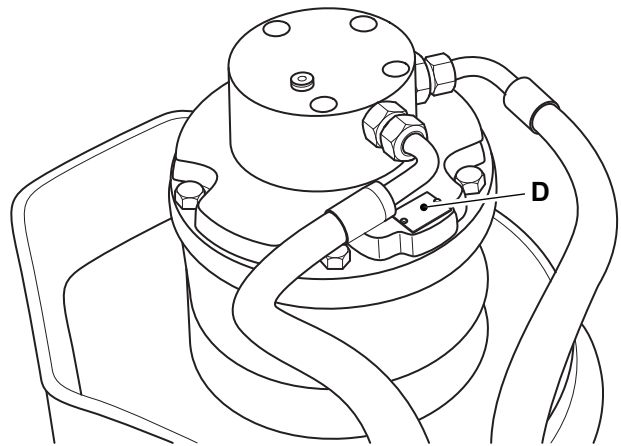
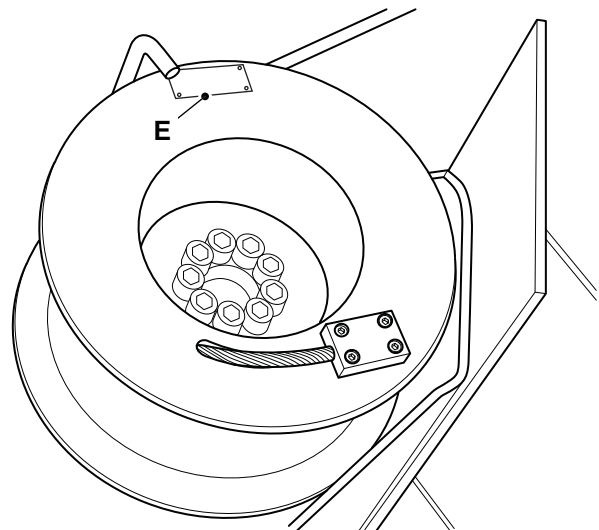


Fig 5.

D003150

Winch Serial Plate

The winch serial number is stamped on a lable **E** which is mounted on winch drum.



Load Chart

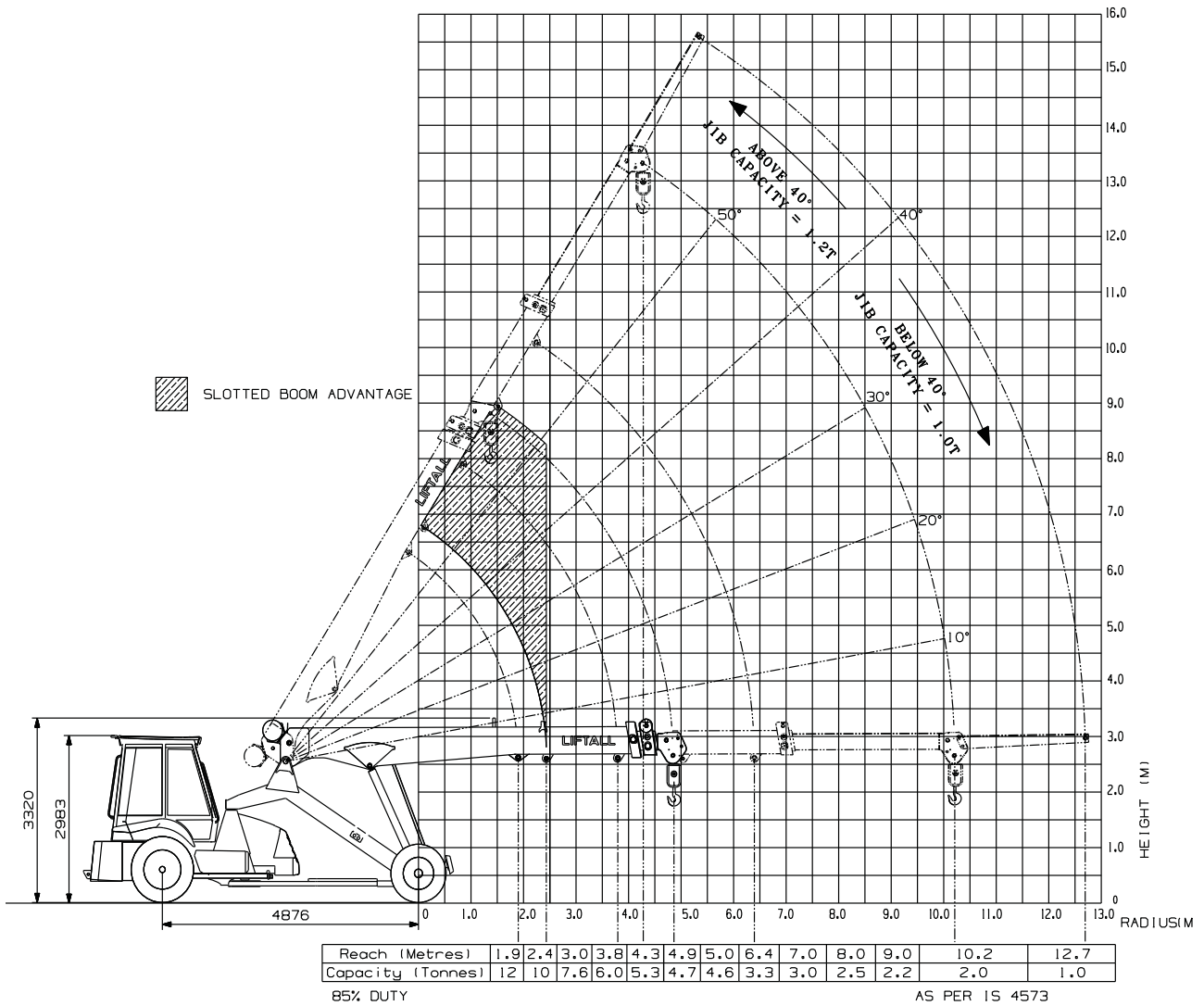


Fig 6. Liftall 1253

D029380

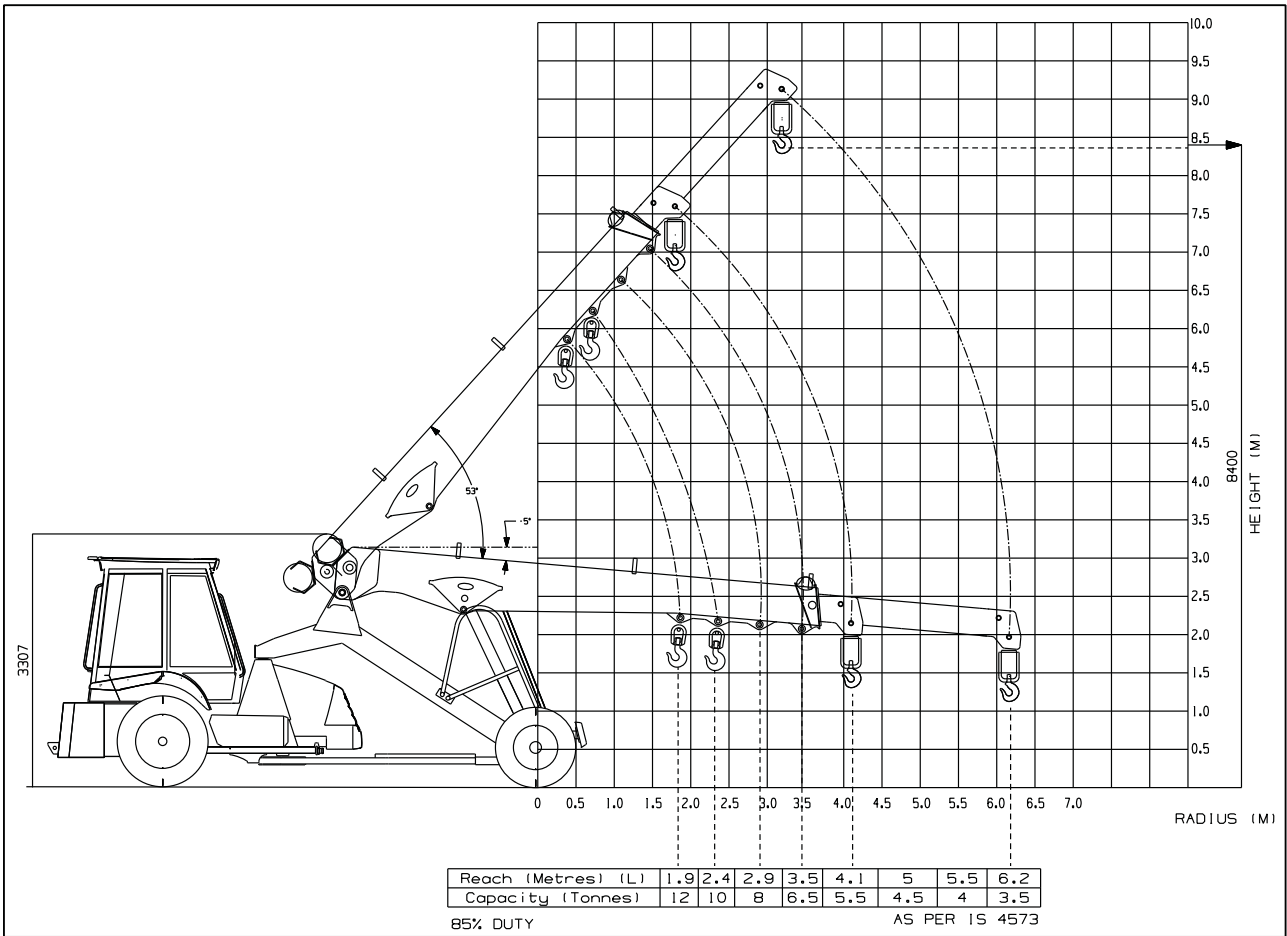


Fig 7. Liftall 1202

D029390

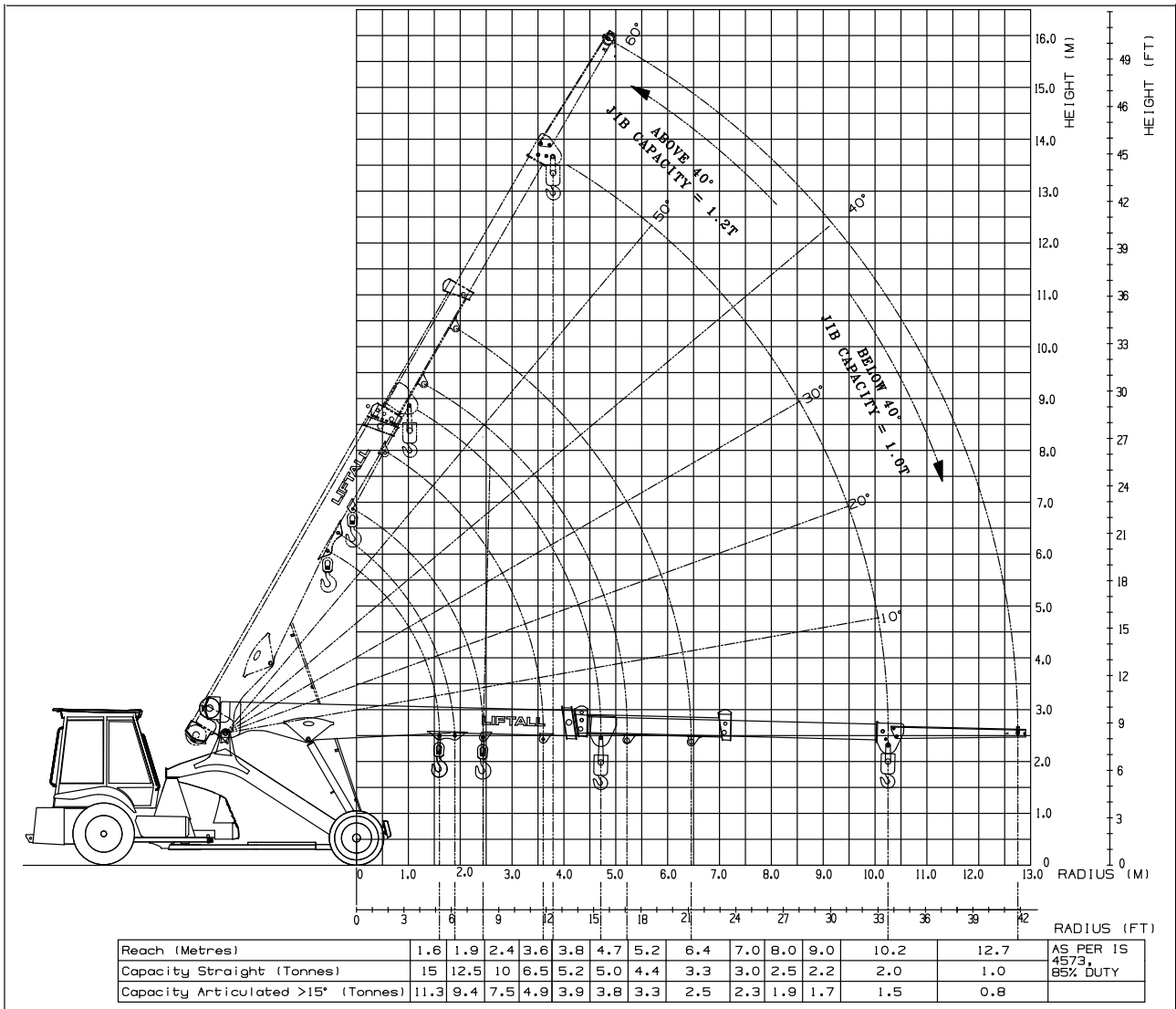
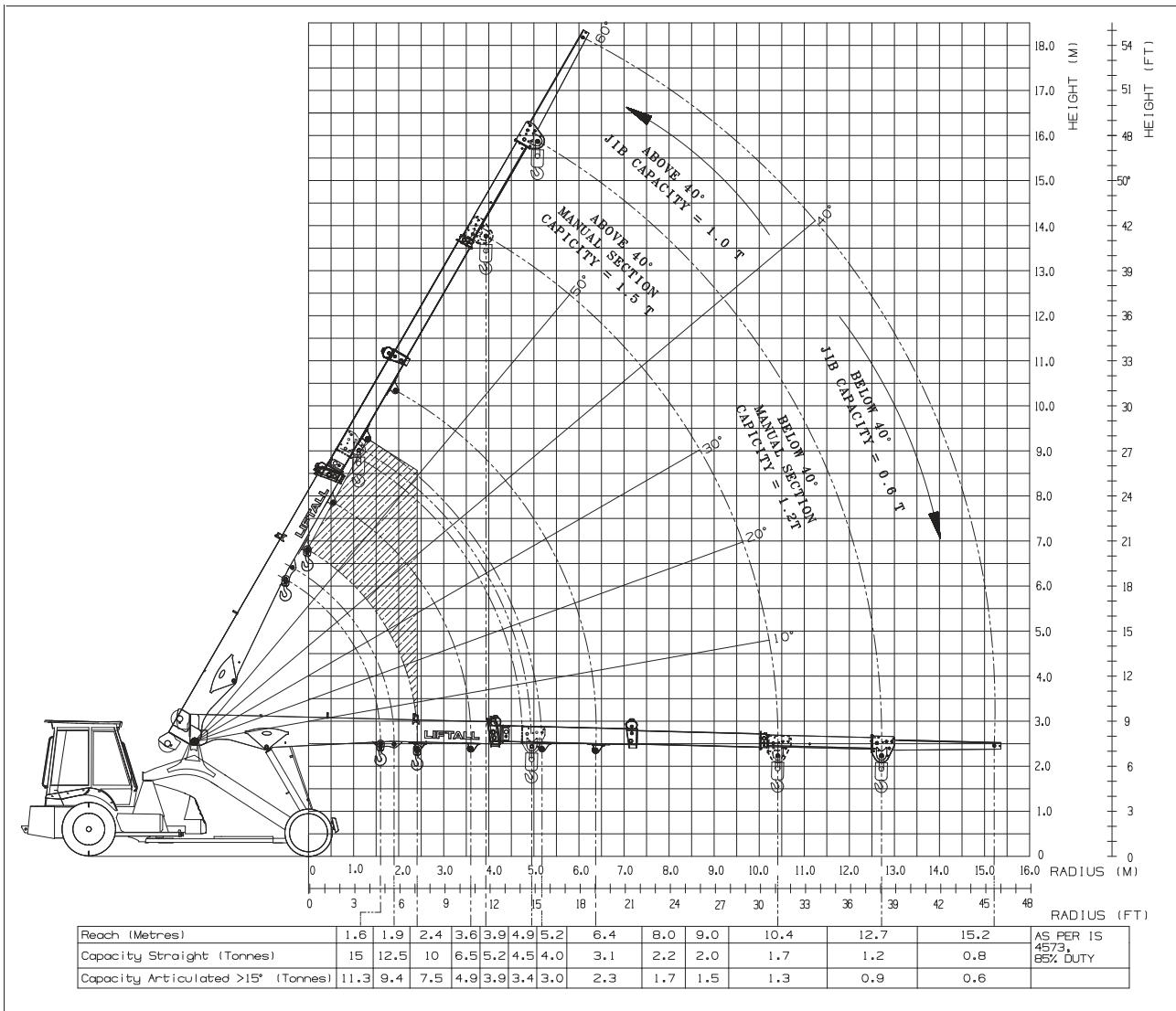


Fig 8. Liftall 1553

D031140



D064850

Fig 9. Liftall 1554

Torque

Torque Settings

Values are for dry threads and may be within three percent of the figures stated. For lubricated thread the values should be reduced by one third.

Use only where no torque setting is specified in the test.

Table 1.

Bolt Size	Hexagon (A/F)		Torque Setting		
	In	(mm)	In	Nm	Kgfm
1/4	(6.3)	7/16	14	1.4	10
5/18	(7.9)	1/2	28	2.8	20
3/8	(9.5)	9/16	49	5.0	36
7/16	(11.1)	5/8	78	8.0	58
1/2	(12.7)	3/4	117	12.0	87
9/10	(14.3)	13/16	170	17.3	125
5/8	(15.9)	15/16	238	24.3	175
3/4	(19.0)	11/8	407	41.5	300
7/8	(22.2)	15/16	650	66.3	480
1	(25.4)	11/2	970	99.0	715
11/4	(31.7)	17/8	1940	198.0	1430
11/2	(38.1)	21/4	3390	345.0	2500

Table 2. Metric Grade 8.8 Bolts

Bolt Size	Hexagon (A/F)		Torque Setting		
	In	(mm)	In	Nm	Kgfm
M5	(5)	8	7	0.7	5
M6	(8)	10	12	1.2	9
M8	(8)	13	28	3.0	21
M10	(10)	17	56	5.7	42
M12	(12)	19	98	10	72
M16	(16)	24	244	25	180
M20	(20)	30	476	48	352
M24	(24)	36	822	84	607
M30	(30)	46	1633	166	1205
M36	(36)	55	2854	291	2105

Note: All bolts used on JCB machines are high tensile and must not be replaced by bolts of a lesser tensile specification.



Tightening Torque Values for Metric Hardware

Condition I Un-Lubricated, zinc, and yellow plated fasteners

Condition II Lubricated, zinc, and yellow plated fasteners

Hardware	Torque (Nm)	
	Condition I	Condition II
M4 x 0.7	2.9	2.6
M5 x 0.8	5.8	5.2
M6 x 1	9.9	9
M8 x 1.25	24	22
M10 x 1.5	47	43
M12 x 1.75	83	74
M14 x 2	132	119
M16 x 2	205	184
M20 x 2.5	400	360
M24 x 3	690	621
M30 x 3.5	1372	1235
M36 x 4	2399	2159

Tightening Torque Values for Hydraulic Adaptor

Nominal Size of Nut	Tightening (Nm)
1/8" BSP	20
1/4" BSP	34
3/8" BSP	75
1/2" BSP	102
5/8" BSP	122
3/4" BSP	183
1" BSP	203
1-1/4" BSP	305
1-1/2" BSP	305

Tightening Torque Values for Hydraulic Hoses

Thread Size	Torque (Nm)	
	Hose connections with O-ring	Hose connections with bonded washers
1/8" BSP	14-16	20
1/4" BSP	24-27	34
3/8" BSP	33-40	75
1/2" BSP	44-50	102
5/8" BSP	58-65	122
3/4" BSP	84-92	183
1" BSP	115-126	203
1-1/4" BSP	189-200	305
1-1/2" BSP	244-260	305

Service Tools

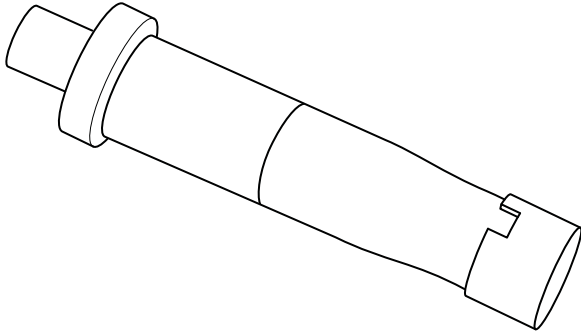


Fig 10. Needle Bush Pressing Tool (332/Y4023)

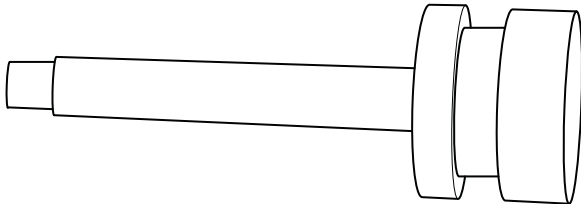


Fig 11. Box Spanner Nut

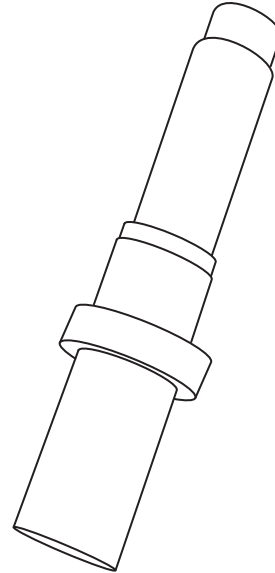


Fig 12. Needle Bush Pressing Tool (332/Y4026)

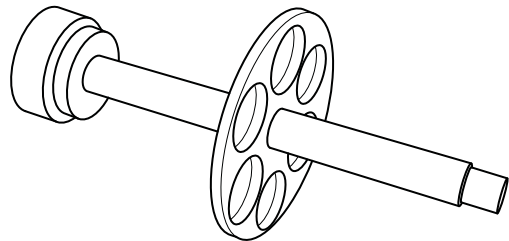


Fig 13. Box Spanner Nut (332/Y4024)

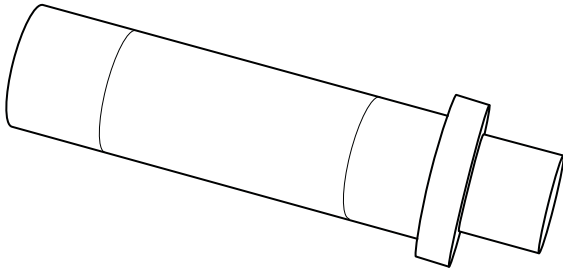


Fig 14. Oil Seal Pressing Tool (332/Y4025)

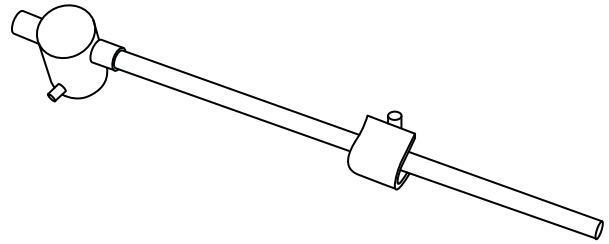


Fig 17. Pre-loading Bar (332/Y4031)

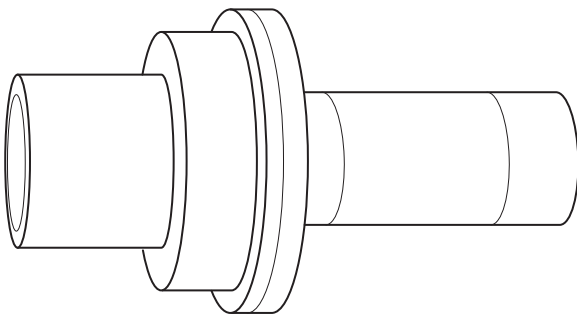


Fig 15. Oil Seal Pressing Tool (332/Y4027)

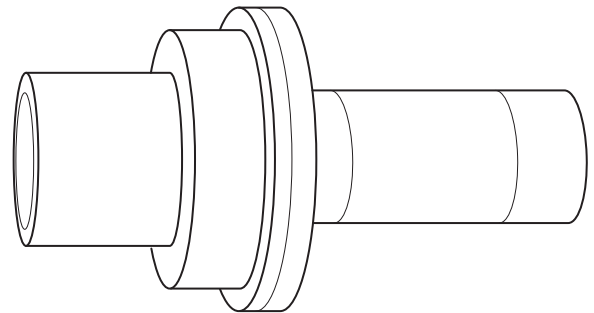


Fig 18. Cone Pressing Tool (332/Y4034)



Fig 16. Withdrawal Nut Fitting Tool (332/Y4028)

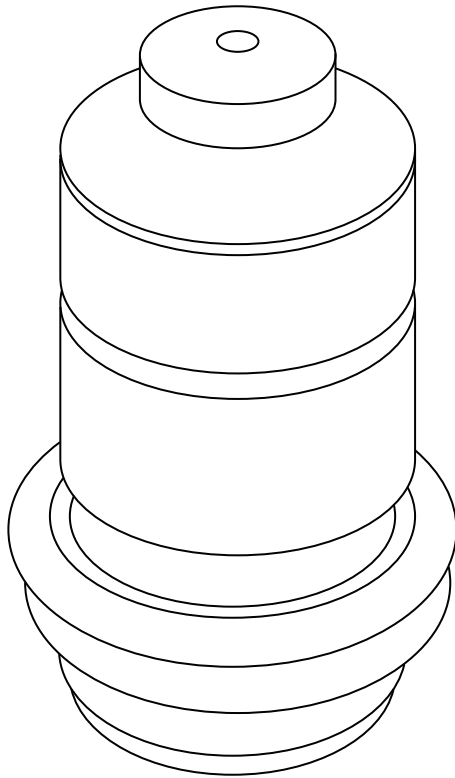


Fig 19. Oil Seal Pressing Tool (332/Y4029)

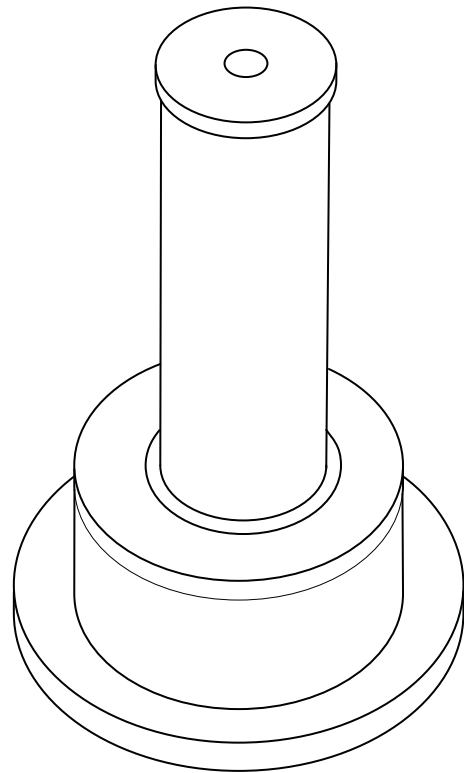


Fig 20. Oil Seal Pressing Tool (332/Y4033)

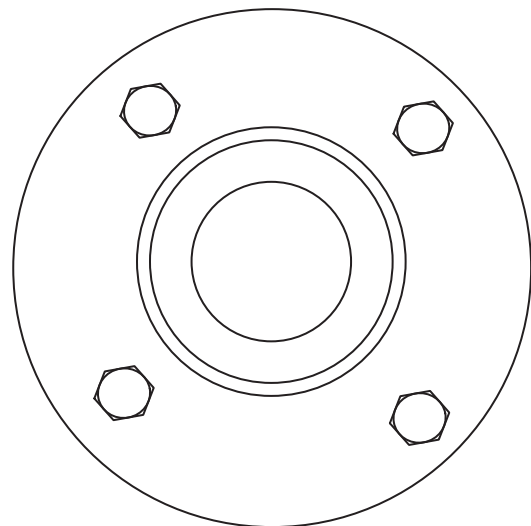


Fig 21. Bearing Puller (332/Y4036)

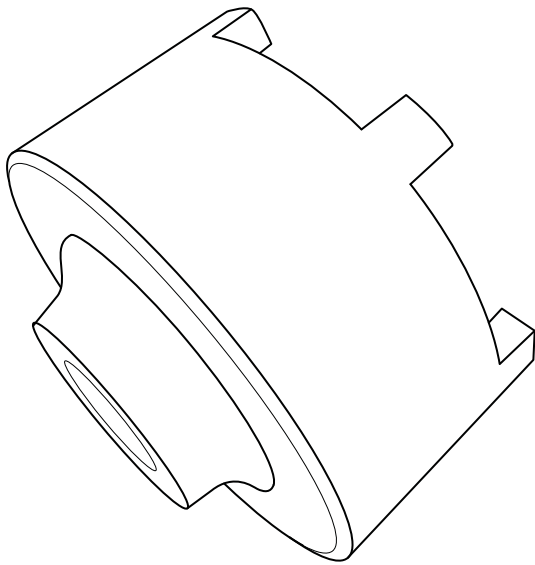


Fig 22.

Front Wheel Hub Lock Nut Adjusting Tool – 333/Y0761
[⇒ Fig 22. \(□ 1-12\)](#)

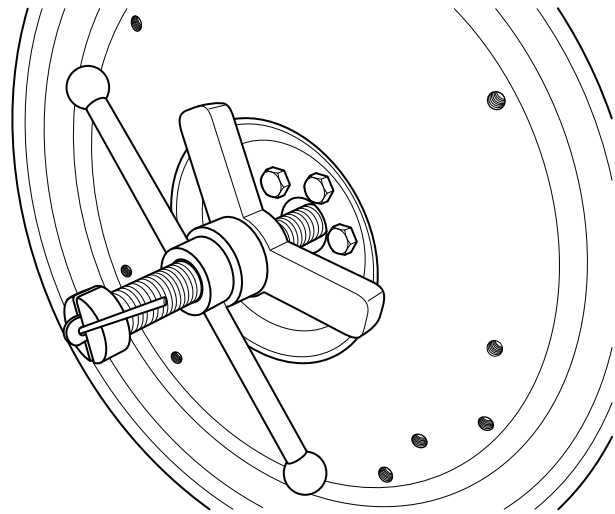


Fig 24.

Engine Pilot Bearing Puller – 333/Y7810.
[⇒ Fig 24. \(□ 1-12\)](#)

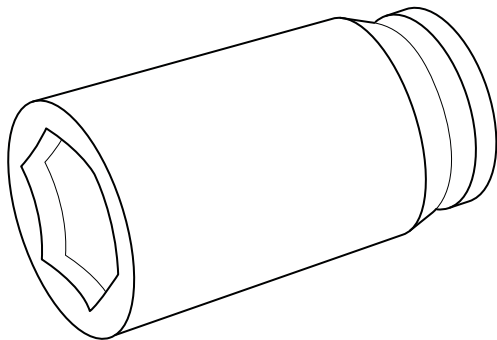


Fig 23.

Engine Foot Mounting Bolt Socket – 333/Y0290.
[⇒ Fig 23. \(□ 1-12\)](#)



Numerical List

The tools listed in the table are special tools required for carrying out the procedures described in this manual. These tools are available from JCB Service.

Some tools are available as kits or sets, the part numbers for parts within such kits or sets are not listed here. For full

details of all tools, including the content of kits and sets, refer to **Tool Detail Reference, Section 1**.

Note: Tools other than those listed will be required. It is expected that such general tools will be available in any well equipped workshop or be available locally from any good tool supplier.

Part Number	Description	See Section
993/68100	Slide Hammer Kit - see Tool Detail Reference (Section 1) for content	B
-	Rivet Nut Tool - see Tool Detail Reference (Section 1)	B
892/00842	Glass Lifter	B
892/00843	Folding Stand for Holding Glass	B
892/00845	Cartridge Gun	B
892/00846	Glass Extractor (Handles)	B
892/00847	Nylon Spatula	B
892/00848	Wire Starter	B
892/00849	Braided Cutting Wire	B
926/15500	Rubber Spacer Blocks	B
992/12300	12V Mobile Oven	B
992/12400	240V Static Oven (2 Cartridge)	B
992/12800	Cut-Out Knife	B
992/12801	'L' Blades	B
4104/1310	Hand Cleaner	B
892/00281	AVO Meter (not illustrated)	C
892/00298	Fluke Meter	C
892/00285	Hyd. Oil Temperature Probe	C
892/00284	Digital Tachometer	C
892/01174	DLA Kit	C
331/22966	Pump Drive Alignment Tool (not illustrated)	E
-	Male Adapters - BSP x BSP - see Tool Detail Reference (Section 1)	E
-	Male Adapters - BSP x NPT (USA only) - see Tool Detail Reference (Section 1)	E
-	Pressure Test Points - Adaptors - see Tool Detail Reference (Section 1)	E
-	Pressure Test Points - 'T' Adaptors - see Tool Detail Reference (Section 1)	E
-	'T' Adaptors - see Tool Detail Reference (Section 1)	E
-	Female Blanking Caps - see Tool Detail Reference (Section 1)	E
-	Male Cone Blanking Caps - see Tool Detail Reference (Section 1)	E
-	Female Connectors - see Tool Detail Reference (Section 1)	E



Section 1 - General Information

General Information

Numerical List

Part Number	Description	See Section
-	Bonded Washers - see <i>Tool Detail Reference (Section 1)</i>	E
-	Ram Protection Sleeves - see <i>Tool Detail Reference (Section 1)</i>	E
892/00334	Ram Seal Fitting Tool	E
	Hexagon Spanners - see <i>Tool Detail Reference (Section 1)</i>	E
892/01027	Piston Seal Assembly Tool	E
-	Hydraulic Flow Test Equipment - see <i>Tool Detail Reference (Section 1)</i>	E
-	Hydraulic Circuit Pressure Test Kit - see <i>Tool Detail Reference (Section 1)</i> for content	E
-	Hydraulic Hand Pump Equipment - see <i>Tool Detail Reference (Section 1)</i>	E
992/10100	Spool Clamp	E
892/00039	Spool Clamp	E
992/02800	ARV Extractor	E
331/31069	Test Block for A.R.V.	E
892/00891	Valve Spool Seal Fitting Tool	E
892/00346	Gauge	E
892/00279	Gauge	E
892/00280	Gauge	E
892/00347	Connector	E
892/00254	Hose	E
-	Ram Jigs - see <i>Tool Detail Reference (Section 1)</i>	E
-	Ram Piston Nut Spanners - see <i>Tool Detail Reference (Section 1)</i>	E
-	Socket Box Wrench	E
-	Nut Adapter	E
-	Seal Ring Tool	E
-	Stopper	E
-	Bearing Rig	E
-	Inserting Seal Ring and Correction Jig - see <i>Tool Detail Reference (Section 1)</i>	E
-	Jig for Pulling Out, Press-fitting Bushing - see <i>Tool Detail Reference (Section 1)</i>	E
-	Jig for Press-fitting Wiper Ring - see <i>Tool Detail Reference (Section 1)</i>	E
-	Jig for Inserting Cylinder Head - see <i>Tool Detail Reference (Section 1)</i>	E
-	Seal Ring and Connector Jig - see <i>Tool Detail Reference (Section 1)</i>	E
-	Bush Removal Jig - see <i>Tool Detail Reference (Section 1)</i>	E
-	Bush Fitting Jig - see <i>Tool Detail Reference (Section 1)</i>	E
-	Wiper Ring Fitting Jig - see <i>Tool Detail Reference (Section 1)</i>	E
-	Wiper Ring Fitting Jig - see <i>Tool Detail Reference (Section 1)</i>	E
892/00041	De-glazing Tool	K

Tool Detail Reference

Section B - Body and Framework

Note: Not all service tools are illustrated.

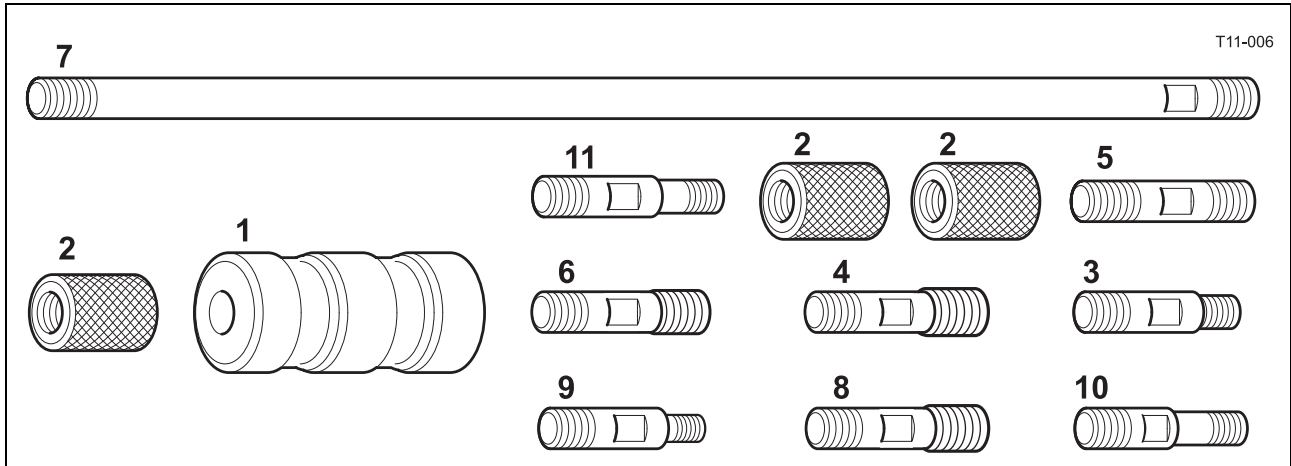


Fig 25. 993/68100 Slide Hammer Kit

1	993/68101	Slide Hammer	7	993/68107	Bar - M20 x M20 X 800 mm
2	993/68102	End Stops	8	993/68108	Adaptor - M20 x 7/8" UNF
3	993/68103	Adaptor - M20 x 5/8" UNF	9	993/68109	Adaptor - M20 x M12
4	993/68104	Adaptor - M20 x 1" UNF	10	993/68110	Adaptor - M20 x 5/8" UNF (Shoulder)
5	993/68105	Adaptor - M20 x M20	11	993/68111	Adaptor - M20 x 1/2" UNF
6	993/68106	Adaptor - M20 x M24			

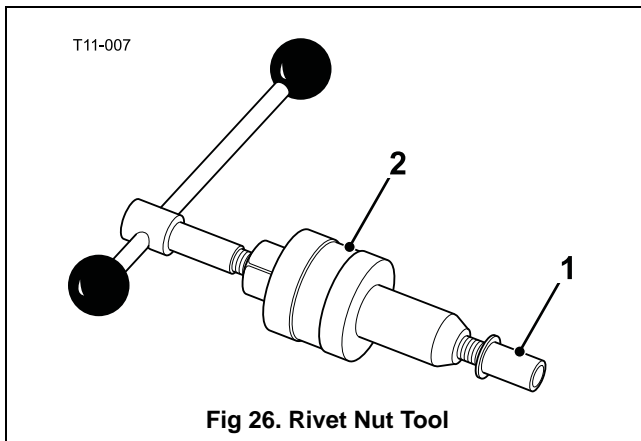


Fig 26. Rivet Nut Tool

1	826/01099	M6 x 16 mm Rivet Nut
	826/01101	M6 x 19 mm Rivet Nut
	826/01102	M8 x 18 mm Rivet Nut
	826/01103	M8 x 21 mm Rivet Nut
	826/01104	M10 x 23 mm Rivet Nut
	826/01105A	M10 x 26 mm Rivet Nut
2	-	Installation Tool available from: Bollhoff Fastenings Ltd (www.bollhoff.com)

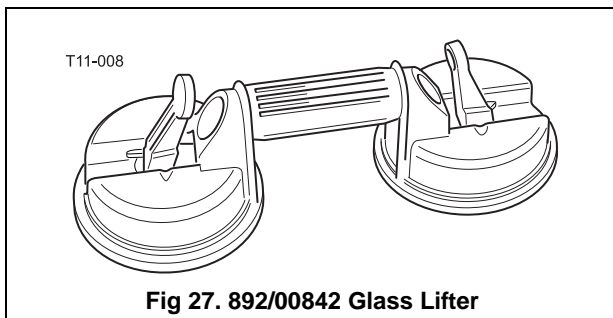


Fig 27. 892/00842 Glass Lifter

Minimum 2 off - Essential for glass installation, 2 required to handle large panes of glass. Ensure suction cups are protected from damage during storage.

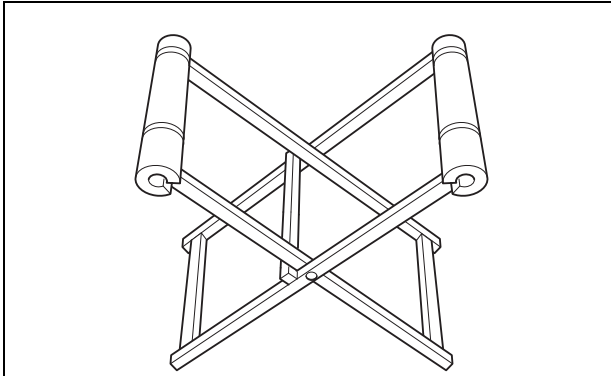
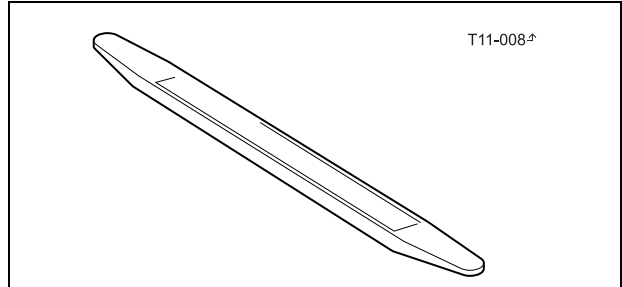


Fig 28. 892/00843 Folding Stand

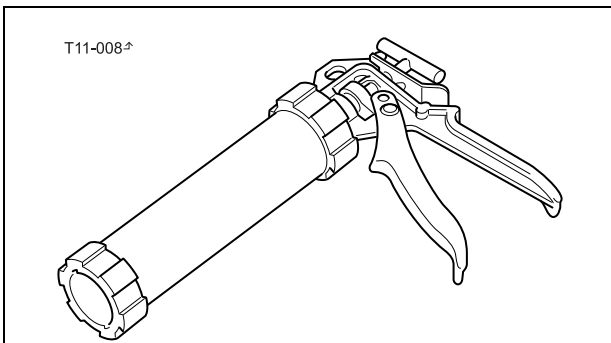
Essential for preparing new glass prior to installation.



T11-008-⁺

Fig 31. 892/00847 Nylon Spatula

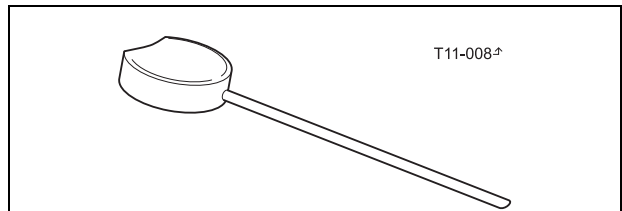
General tool used for smoothing sealants - also used to re-install glass in rubber glazing because metal tools will chip the glass edge.



T11-008-⁺

Fig 29. 892/00845 Cartridge Gun

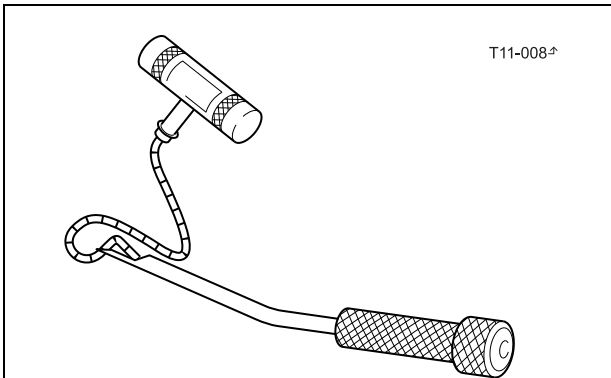
Hand operated. Essential for the application of sealants, polyurethane materials etc.



T11-008-⁺

Fig 32. 892/00848 Wire Starter

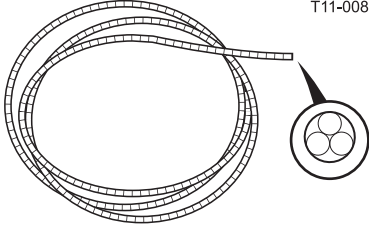
Used to access braided cutting wire through original polyurethane seal. → [Fig 33. \(□ 1-17\)](#).



T11-008-⁺

Fig 30. 892/00846 Glass Extractor (Handles)

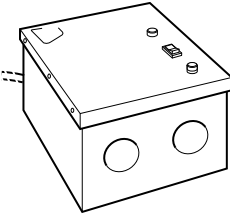
Used with braided cutting wire to cut out broken glass. → [Fig 33. \(□ 1-17\)](#).



T11-008[±]

Fig 33. 892/00849 Braided Cutting Wire

Consumable heavy duty cut-out wire used with the glass extraction tool. ⇒ [Fig 30.](#) (□ 1-16). Approx 25 m length.

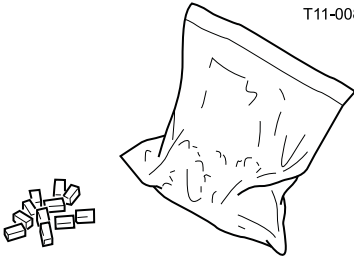


T11-008[±]

Fig 36. 992/12400 Static Oven 240V

Required to pre-heat adhesive prior to use. No plug supplied.

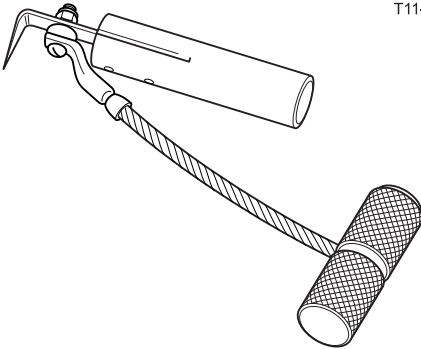
Note: 110V models available upon request - contact JCB Technical Service.



T11-008[±]

Fig 34. 926/15500 Rubber Spacer Blocks

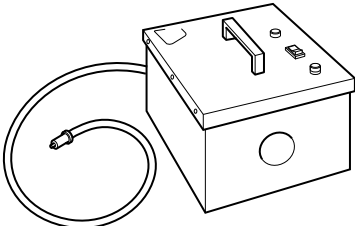
Used to provide the correct set clearance between glass edge and cab frame. Unit quantity = 500 off.



T11-008[±]

Fig 37. 992/12800 Cut-Out Knife

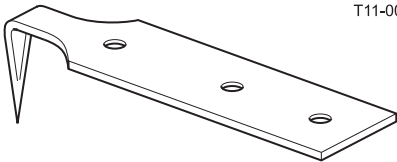
Used to remove broken glass.



T11-008[±]

Fig 35. 992/12300 Mobile Oven 12V

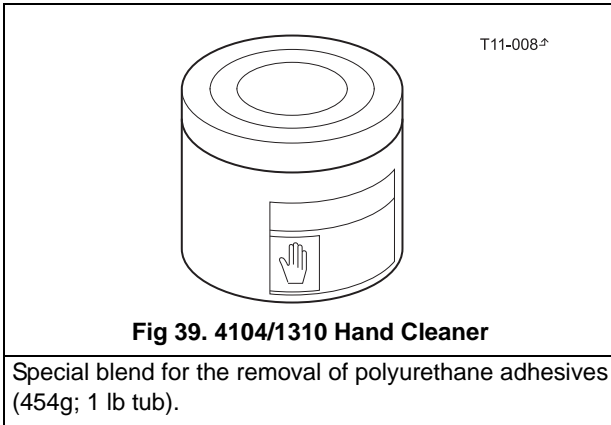
1 cartridge capacity. Required to pre-heat adhesive prior to use. It is fitted with a male plug (703/23201) which fits into a female socket (715/04300).



T11-008[±]

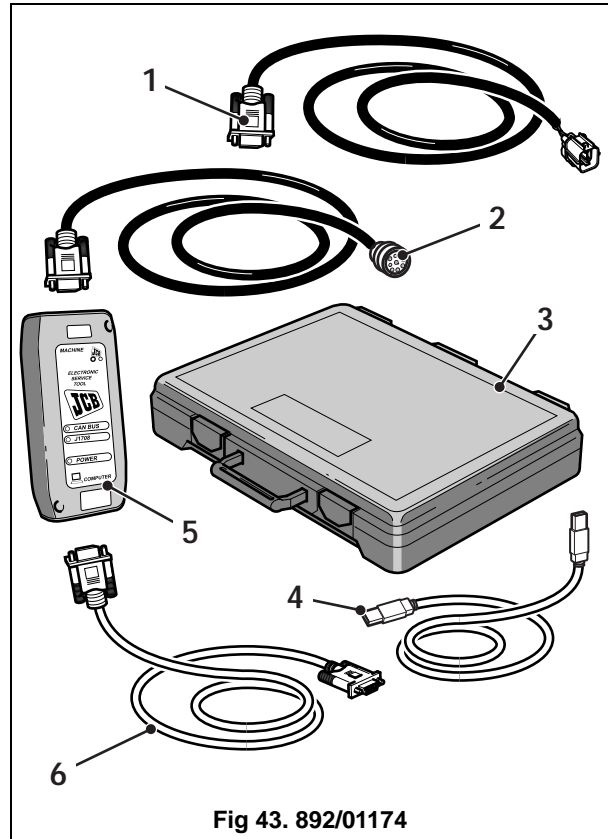
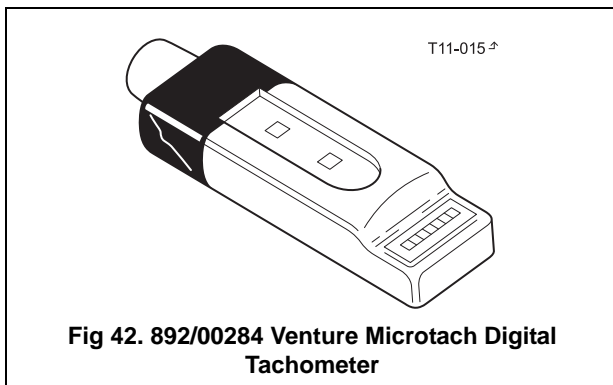
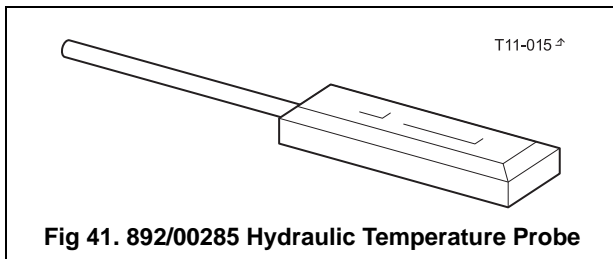
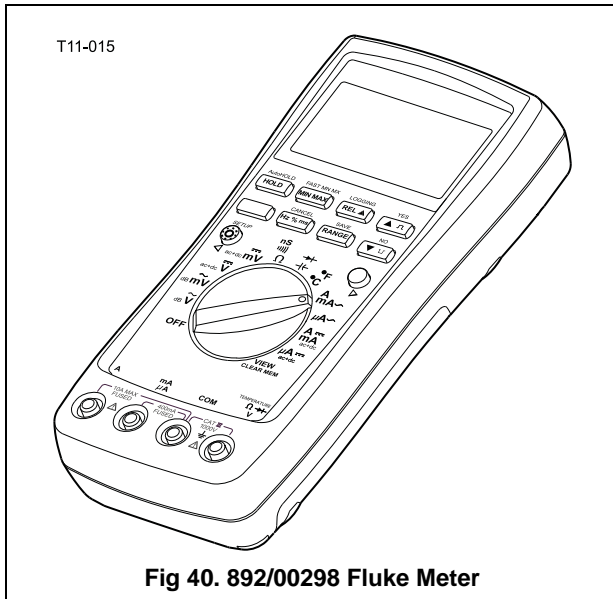
Fig 38. 992/12801 'L' Blades

25 mm (1 in.) cut. Replacement blades for cut-out knife. ⇒ [Fig 37.](#) (□ 1-17). Unit quantity = 5 off.



Section C - Electrics

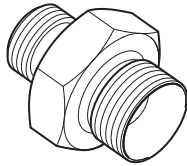
Note: Not all service tools are illustrated.

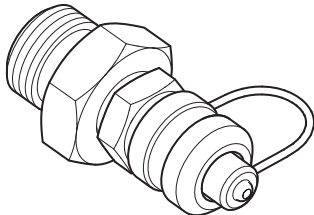


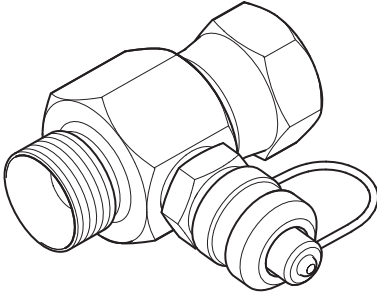
1	Interconnecting cable, DLA to machine ECU diagnostics socket.
2	Interconnecting cable, DLA to machine ECU diagnostics socket.
3	Kit carrying case.
4	Interconnecting cable, DLA to laptop PC.
5	Data Link Adaptor (DLA), enables data exchange between the machine ECU (Electronic Control Unit) and a laptop PC loaded with the applicable diagnostics software.
6	Interconnecting cable, DLA to laptop PC.

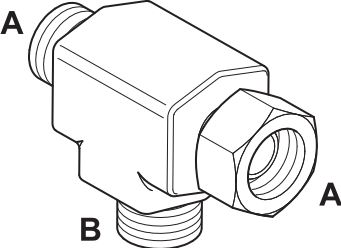
Section E - Hydraulics

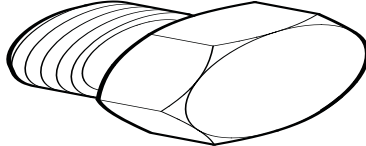
Note: Not all service tools are illustrated.

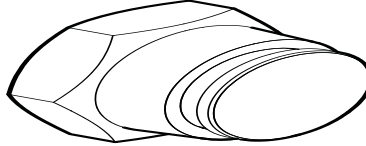
<p>T11-010</p>  <p>Fig 44. Male Adaptors</p>		Male Adaptors - BSP x BSP	
	1606/2052	3/8 in. x 1/4 in.	
	1604/0003A	3/8 in. x 3/8 in.	
	892/00071	3/8 in. x 3/8 in. taper	
	1606/0004	1/2 in. x 1/4 in.	
	1606/0007A	1/2 in. x 3/8 in.	
	1604/0004A	1/2 in. x 1/2 in.	
	1606/0017	5/8 in. x 1/2 in.	
	1606/0008	3/4 in. x 3/8 in.	
	Male Adaptors - BSP x NPT (USA only)	1606/0009	3/4 in. x 1/2 in.
816/00439	3/8 in. x 1/4 in.	1604/2055	3/4 in. x 3/4 in.
816/00440	1/2 in. x 1/4 in.	1606/0012	3/4 in. x 1 in.
816/15007A	3/8 in. x 3/8 in.	1606/0014	3/4 in. x 1.1/4 in.
816/15008	1/2 in. x 3/8 in.	1606/0015	1 in. x 1.1/4 in.

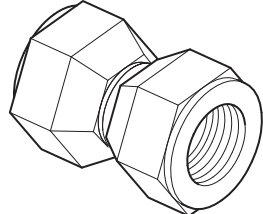
<p>T11-010[±]</p>  <p>Fig 45. Pressure Test Adaptors</p>	892/00255	1/4 in. BSP x Test Point
	892/00256	3/8 in. BSP x Test Point
	892/00257	1/2 in. BSP x Test Point
	892/00258	5/8 in. BSP x Test Point
	816/15118	3/4 in. BSP x Test Point
	892/00259	1 in. BSP x Test Point
	892/00260	1.1/4 in. BSP x Test Point
	892/00261	5/8 in. UNF x Test Point

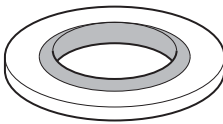
<p>T11-010[±]</p>  <p>Fig 46. Pressure Test 'T' Adaptors</p>	816/55045	1/4 in. M BSP x 1/4 in. F BSP x Test Point
	816/55038	3/8 in. M BSP x 3/8 in. F BSP x Test Point
	816/55040	1/2 in. M BSP x 1/2 in. F BSP x Test Point
	892/00263	5/8 in. M BSP x 5/8 in. F BSP x Test Point
	892/00264	3/4 in. M BSP x 3/4 in. F BSP x Test Point
	892/00265	1 in. M BSP x 1 in. F BSP x Test Point
	892/00266	1.1/4 in. M BSP x 1.1/4 in. F BSP x Test Point
	892/00267	1.1/4 in. M BSP x 1.1/2 in. F BSP x Test Point

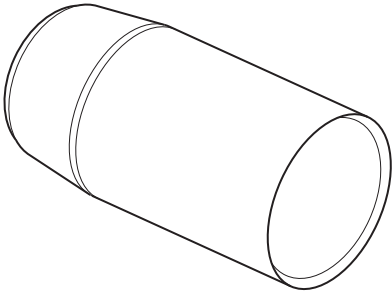
<p>T11-010[±]</p>  <p>Fig 47. 'T' Adapters</p>	892/00047	3/8 in. BSP (A) x 1/4 in. BSP (B)
	892/00048	1/2 in. BSP (A) x 1/4 in. BSP (B)
	892/00049	5/8 in. BSP (A) x 1/4 in. BSP (B)
	816/50043	3/4 in. BSP (A) x 1/4 in. BSP (B)
	892/00051	1 in. BSP (A) x 1/4 in. BSP (B)
	816/50005	1/2 in. BSP (A) x 1/2 in. BSP (B)
	816/60096	3/4 in. BSP (A) x 3/4 in. BSP (B)
	816/00017	1 in. BSP (A) x 1 in. BSP (B)

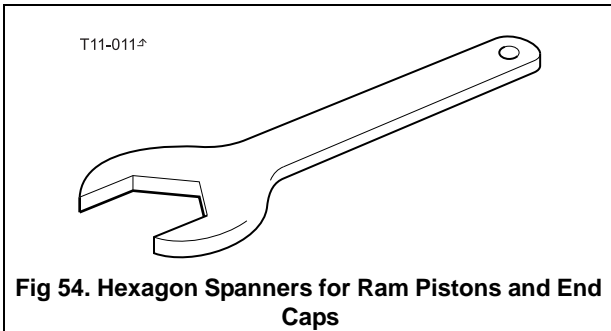
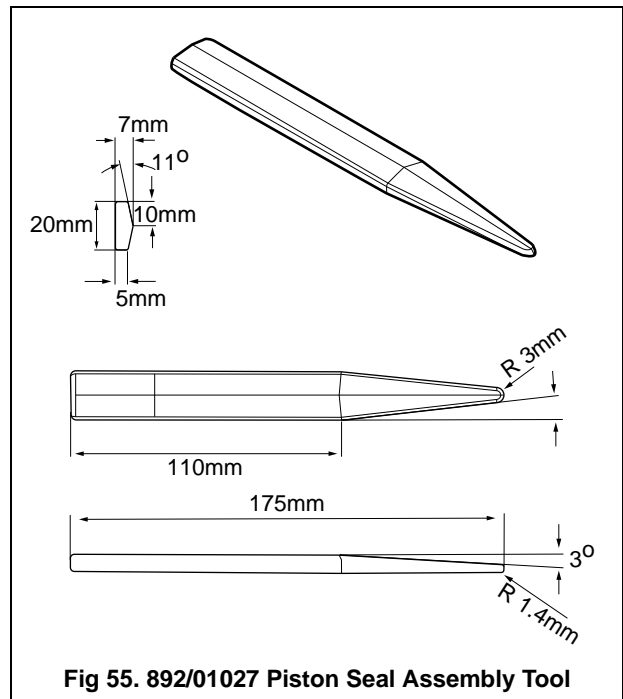
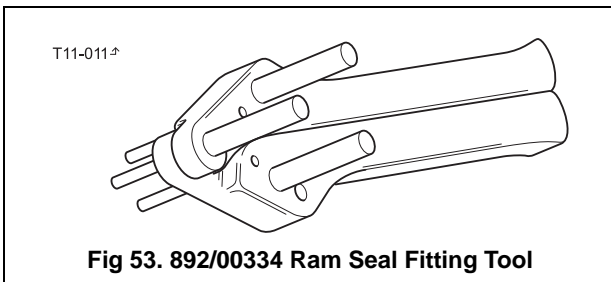
 <p>Fig 48. Female Blanking Caps</p>	892/00055A	1/4 in. BSP
	892/00056A	3/8 in. BSP
	892/00057	1/2 in. BSP
	892/00058A	5/8 in. BSP
	892/00059A	3/4 in. BSP
	892/00060	1 in. BSP

 <p>Fig 49. Male Cone Blanking Caps</p>	816/90045	1/4 in. BSP
	816/00189A	3/8 in. BSP
	816/00190A	1/2 in. BSP
	816/90022	5/8 in. BSP
	816/90274	3/4 in. BSP
	816/90205	1 in. BSP

<p>T11-010[±]</p>  <p>Fig 50. Female Connectors</p>	892/00074	3/8 in. BSP x 3/8 in. BSP
	892/00075	1/2 in. BSP x 1/2 in. BSP
	892/00076	5/8 in. BSP x 5/8 in. BSP
	892/00077	3/4 in. BSP x 3/4 in. BSP

<p>T11-010[±]</p>  <p>Fig 51. Bonded Washers</p>	1406/0011	1/4 in. BSP
	1406/0018	1/2 in. BSP
	1406/0014	5/8 in. BSP
	1406/0021	3/4 in. BSP
	1406/0029	1.1/4 in. BSP

 <p>Fig 52. Ram Protection Sleeves</p>	892/01016	For 25 mm Rod Diameter
	892/01017	For 30 mm Rod Diameter
	892/01018	For 40 mm Rod Diameter
	892/01019	For 50 mm Rod Diameter
	892/01020	For 50 mm Rod Diameter (slew ram)
	892/01021	For 60 mm Rod Diameter
	892/01022	For 60 mm Rod Diameter (slew ram)
	892/01023	For 65 mm Rod Diameter
	892/01024	For 70 mm Rod Diameter
	892/01025	For 75 mm Rod Diameter
	892/01026	For 80 mm Rod Diameter
892/00167	For 90 mm Rod Diameter	



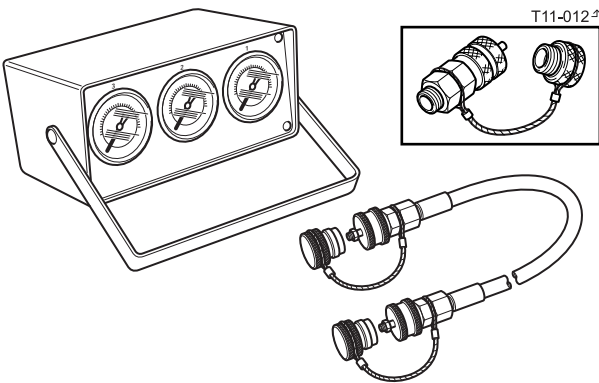
992/09300	55mm A/F
992/09400	65mm A/F
992/09500	75mm A/F
992/09600	85mm A/F
992/09700	95mm A/F
992/09900	115mm A/F
992/10000	125mm A/F

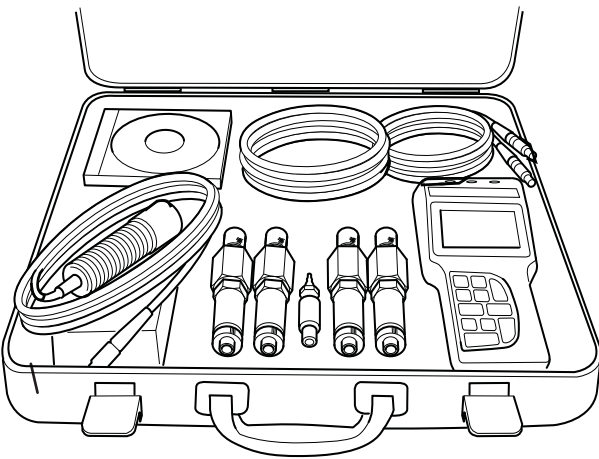
<p>Note: No longer available, refer to 998/11046 JCB ServiceMaster Flow Test Kit. → Fig 57. (1-23).</p>		892/00268	Flow Monitoring Unit
<p>T11-012</p>	892/00269	Sensor Head 0 - 100 l/min (0 - 22 UK gal/min)	
	892/00273	Sensor Head 0 - 380 l/min (0 - 85.5 UK gal/min)	
	892/00293	Connector Pipe	
	892/00270	Load Valve	
	1406/0021	Bonded Washer	
	1604/0006A	Adapter 3/4 in M x 3/4 in M BSP	
	1612/2054	Adapter 3/4 in F x 3/4 in M BSP	
	892/00271	Adapter 3/4 in F x 5/8 in M BSP	
	892/00272	Adapter 5/8 in F x 3/4 in M BSP	
	816/20008	Adapter 3/4 in F x 1/2 in M BSP	
	892/00275	Adapter 1/2 in F x 3/4 in M BSP	
	892/00276	Adapter 3/4 in F x 3/8 in M BSP	
	892/00277	Adapter 3/8 in F x 3/4 in M BSP	
	1606/0015	Adapter 1.1/4 in M BSP x 1 in M BSP	
	892/00078	Connector 1 in F x 1 in F BSP	
	1604/0008	Adapter 1 in M x 1 in M BSP	
	1606/0012	Adapter 1 in M x 3/4 in M BSP	
816/20013	Adapter 3/4 in F x 1 in M BSP		

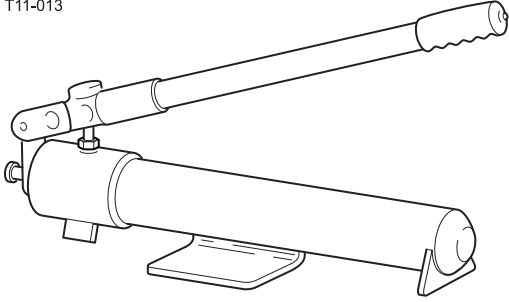
Fig 56. Flow Test Equipment

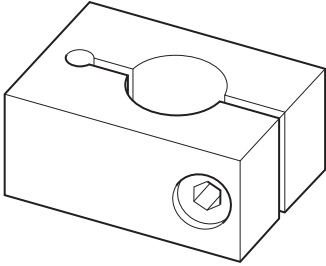
	998/11047	600 LPM Flow Turbine with Loading Valve
	998/11048	1-7/8" UNF x1 - 1/4" BSP Flow Block Adaptors x2
	998/11049	Carrying Case for Flow Test Kit
	998/11050	Temperature Sensor (125°C Max)

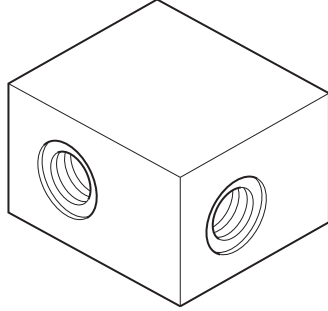
Fig 57. 998/11046 JCB ServiceMaster Flow Test Kit

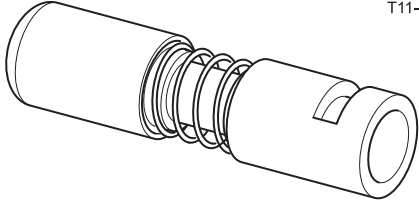
<p>Note: No longer available, refer to 998/11051 JCB ServiceMaster Digital Hydraulic Datalogger Pressure Test Kit. → Fig 59. (1-24).</p>  <p>Fig 58. 892/ 00253 Hydraulic Circuit Pressure Test Kit</p>	892/00201	Replacement Gauge 0-20 bar (0-300 lbf/in ²)
	892/00202	Replacement Gauge 0-40 bar (0-600 lbf/in ²)
	892/00203	Replacement Gauge 0-400 bar (0-6000 lbf/in ²)
	892/00254	Replacement Hose
	993/69800	Seal Kit for 892/00254 (can also be used with probe 892/00706)
	892/00706	Test Probe
	892/00347	Connector - Hose to gauge

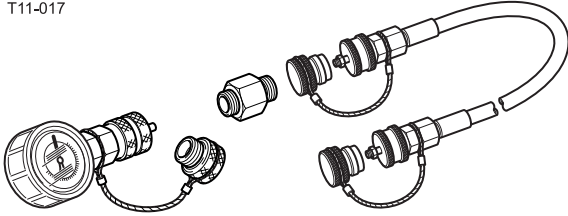
 <p>Fig 59. 998/11051 JCB ServiceMaster Digital Hydraulic Datalogger Pressure Test Kit</p>	998/11052	Hand Held 4-Channel ServiceMaster Unit
	998/11053	SensoWin Software Kit and PC Cable
	998/11054	Equipment Case SCC-750
	998/11055	0-600 Bar Pressure Transduce x2
	998/11056	0-100 Bar pressure Transducer x2
	998/11057	RPM Tachometer (includes fixed cable, 2 meters)
	998/11058	5 Meter Connecting Cable
	998/11059	M16 Metric Adaptors for Test Points x4
	998/11060	400mm Test Hose 90° HSP to M16 x2
	998/11061	400mm Test Hose Straight HSP to M16 x2

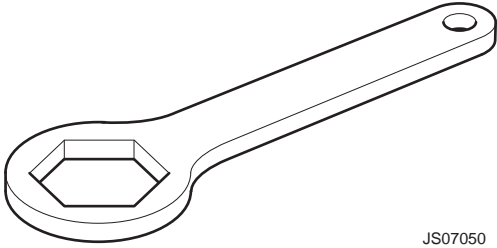
 <p>T11-013</p> <p>Fig 60. Hand Pump Equipment</p>	892/00223	Hand Pump
	892/00137	Micro-bore Hose 1/4 in BSP x 3 metres
	892/00274	Adapter 1/4 in M BSP x 3/8 in M BSP Taper
	892/00262	1/4 in M BSP x 1/4 in F BSP x Test Point
	892/00706	Test Probe
	892/00278	Gauge 0 - 40 bar (0 - 600 lbf/in ²)
	892/00279	Gauge 0 - 400 bar (0 - 6000 lbf/in ²)

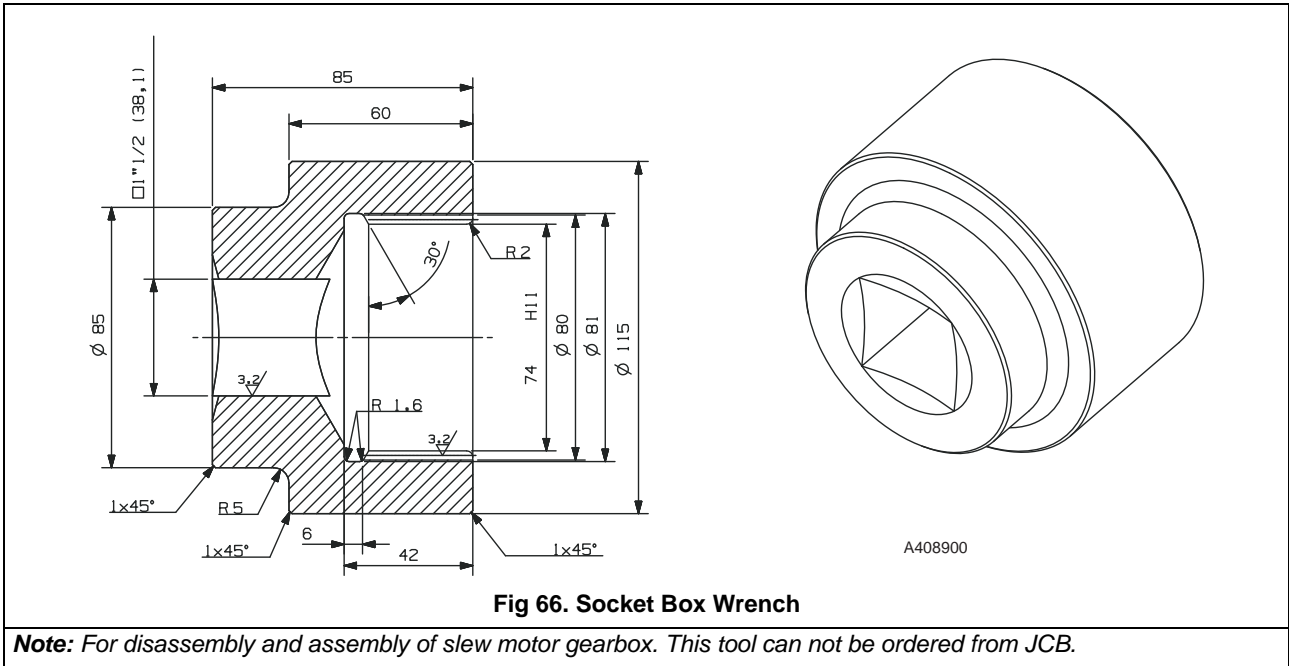
 <p>Fig 61. Spool Clamps</p>	
892/00039	Spool Clamp
992/10100	Spool Clamp - Diameter 19mm (3/4 in)
992/02800	ARV Extractor

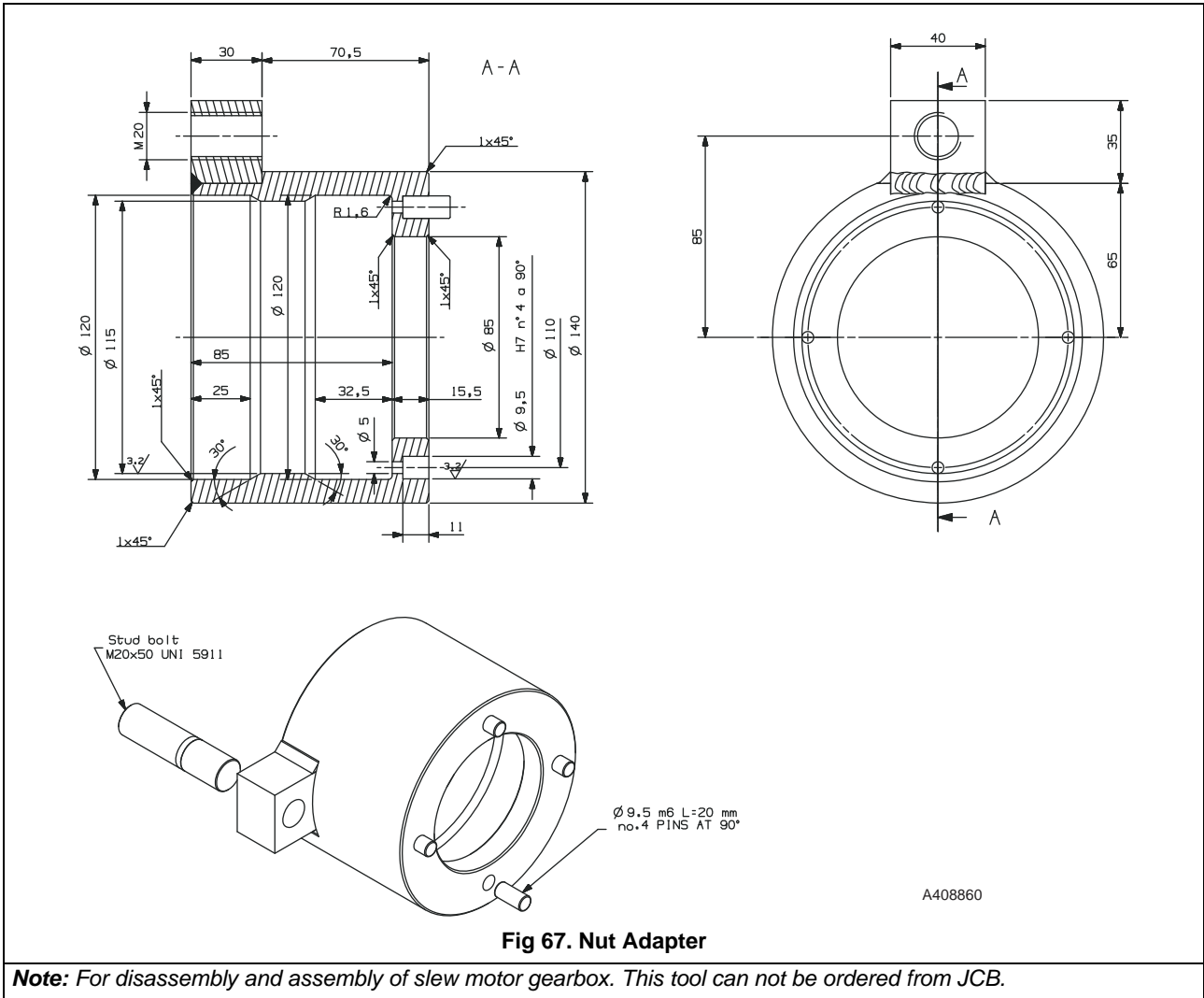
 <p>Fig 62. 331/31069 - Test Block for A.R.V.</p>	
--	--

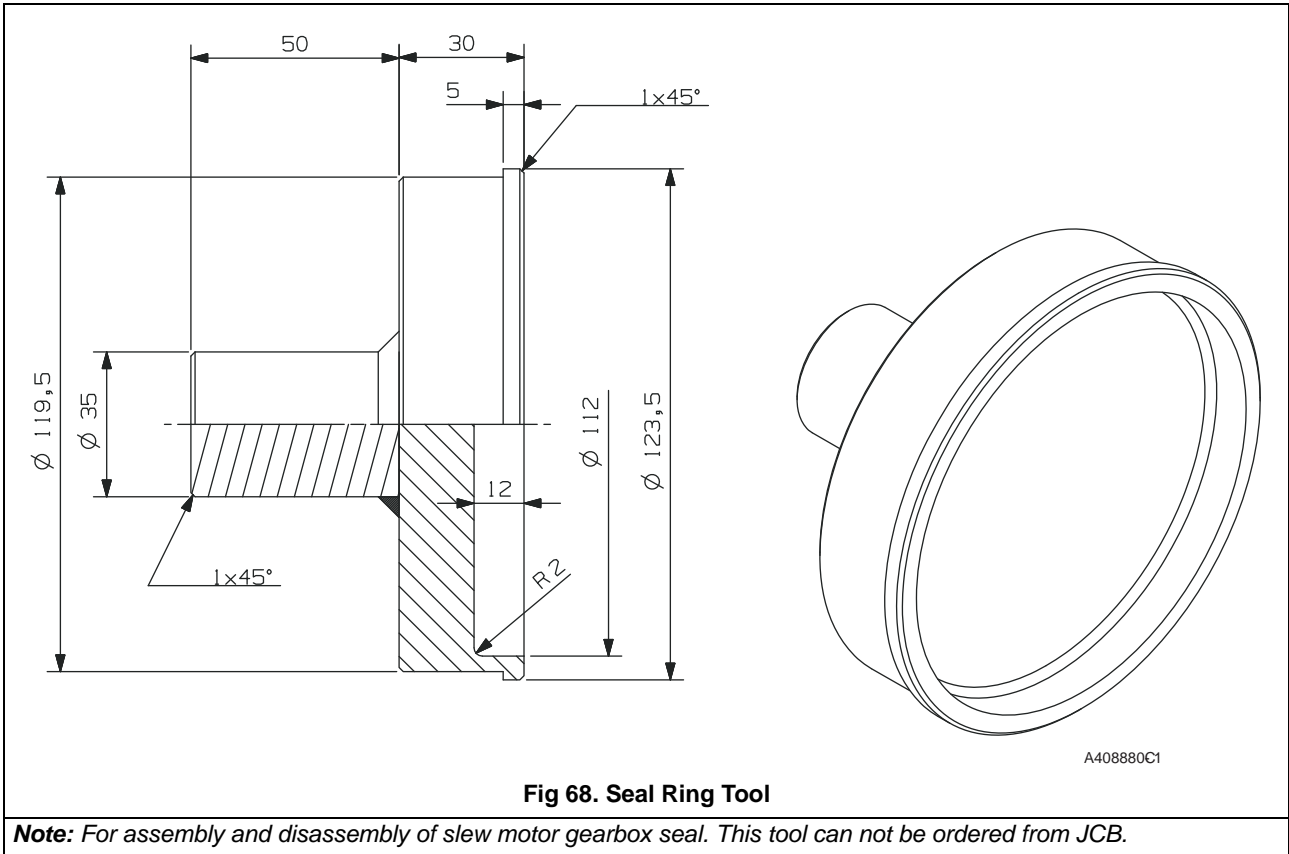
 <p>T11-014[±]</p> <p>Fig 63. 892/00881 Valve Spool Seal Fitting Tool</p>	
---	--

 <p>T11-017</p> <p>Fig 64. Hydraulic Circuit Test Gauges and Connections</p>	892/00280	Pressure Gauge 0-600 bar (0-9000 lbf/in ²)
	892/00279	Pressure Gauge 0-400 bar (0-6000 lbf/in ²)
	892/00346	Pressure Gauge 0-70 bar (0-1000 lbf/in ²)
	892/00347	Connector
	892/00254	Hose

 <p style="text-align: right;">JS07050</p> <p>Fig 65. Ram Piston Nut Removal/Fitting Spanner</p>	993/99512	Spanner 55 mm A/F
	993/99513	Spanner 60 mm A/F
	993/99514	Spanner 65 mm A/F
	993/99515	Spanner 70 mm A/F
	993/99516	Spanner 75 mm A/F
	993/99517	Spanner 85 mm A/F
	993/99518	Spanner 90 mm A/F
	993/99519	Spanner 100 mm A/F
	993/99520	Spanner 110 mm A/F
	993/99521	Spanner 115 mm A/F
	SSP0046	Spanner 80 mm A/F
	SSP0047	Spanner 95 mm A/F







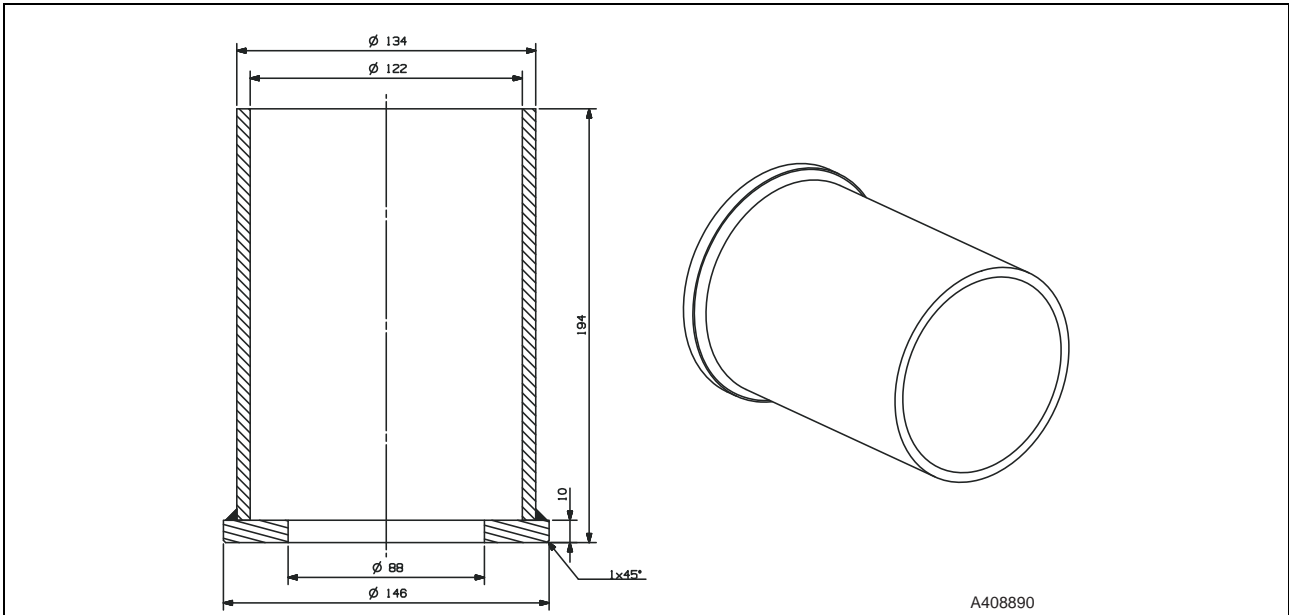
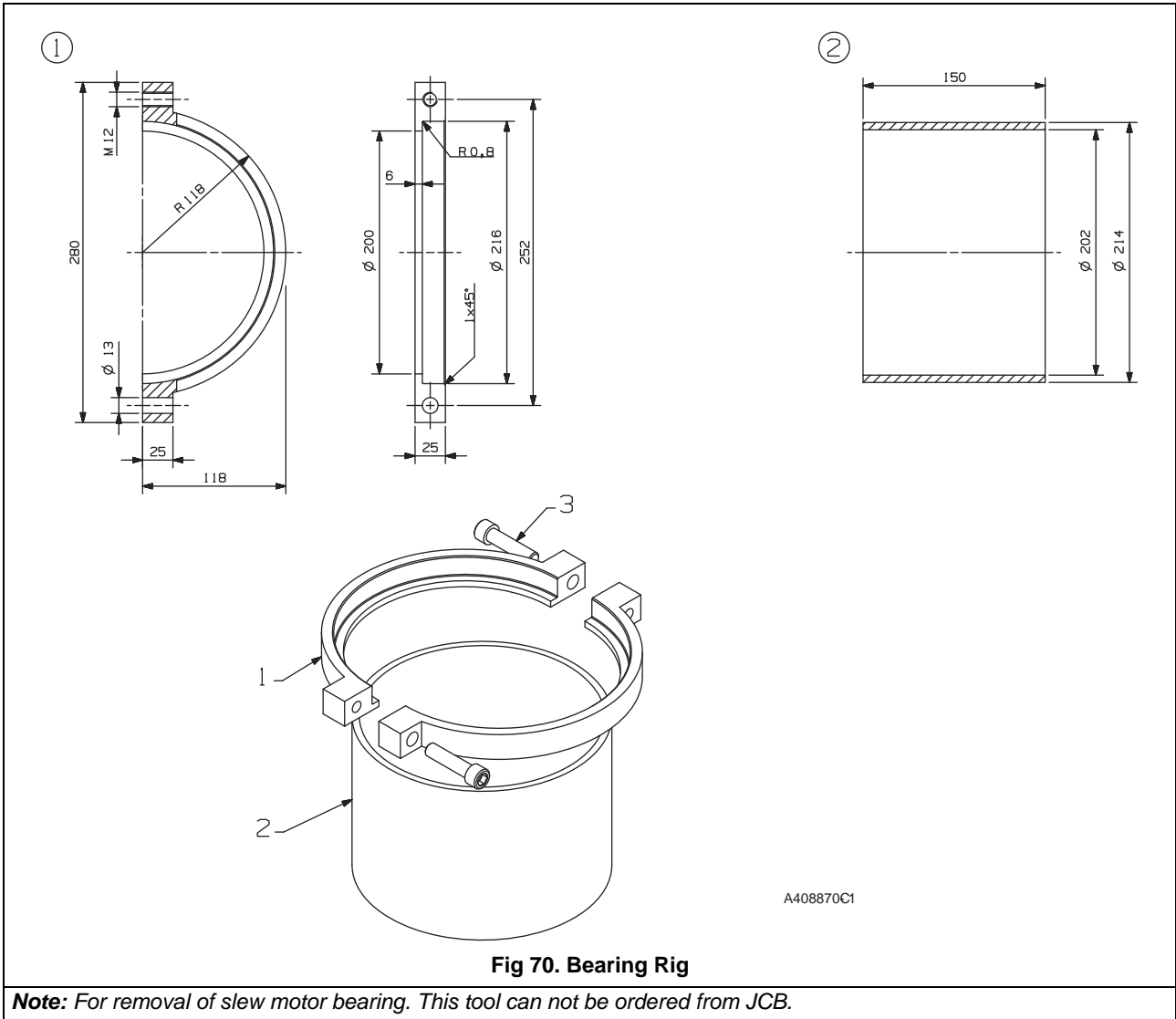


Fig 69. Stopper

Note: For assembly of slew motor gearbox. This tool can not be ordered from JCB.



Inserting Seal Ring and Correction Jig

WDB 2052	Bucket	120mm Cylinder inner diameter
WDB 2054	Boom	125mm Cylinder inner diameter
WDB 2164	Boom	130mm Cylinder inner diameter
WDB 2056	Arm	150mm Cylinder inner diameter

Jig for Pulling Out, Press-fitting Bushing

WDB 2166	Bucket	80mm Piston Rod diameter
WDB 2167	Boom	85mm Piston Rod diameter
WDB 2170	Arm	100mm Piston Rod diameter
WDB 2168	Bucket	90mm Piston Rod diameter
WDB 2168	Boom	90mm Piston Rod diameter
WDB 2171	Arm	105mm Piston Rod diameter

Jig for Press-fitting Wiper Ring

WDB 2166-1	Bucket	80mm Piston Rod diameter
WDB 2167-1	Boom	85mm Piston Rod diameter
WDB 2170-1	Arm	100mm Piston Rod diameter
WDB 2168-1	Bucket	90mm Piston Rod diameter
WDB 2168-1	Boom	90mm Piston Rod diameter
WDB 2171-1	Arm	105mm Piston Rod diameter

Jig for Inserting Cylinder Head

WDB 2174	Bucket	80mm Piston Rod inner diameter
WDB 2175	Boom	85mm Piston Rod inner diameter
WDB 2178	Arm	100mm Piston Rod inner diameter
WDB 2176	Bucket	90mm Piston Rod inner diameter
WDB 2176	Boom	90mm Piston Rod inner diameter
WDB 2179	Arm	105mm Piston Rod inner diameter

Seal Ring and Connector Jig

WDB 2052	Seal Ring insert and connection jig set
Note: The above Part no. is applicable to a tube diameter of 120mm	

Bush Removal Jig

WDB 2166	Bush removal jig
----------	------------------



Section 1 - General Information

General Information

Tool Detail Reference

WDB 2166-1	Retainer
Note: The above Part no. is applicable to a rod diameter of 80mm	

Bush Fitting Jig

WDB 2166	Bush press fitting jig
WDB 2166-1	Retainer
Note: The above Part no. is applicable to a rod diameter of 80mm	

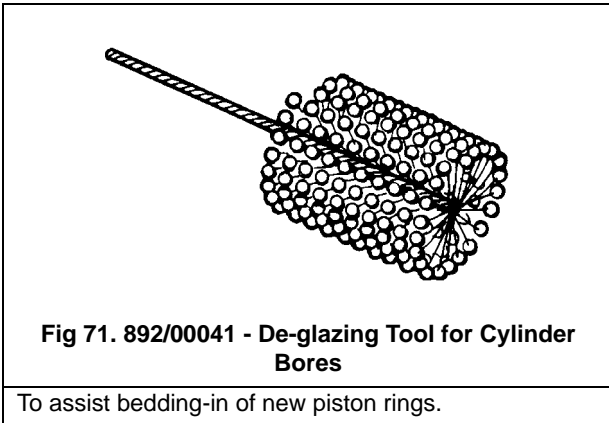
Wiper Ring Fitting Jig

WDB 2166-1	Wiper Ring fitting
Note: The above Part no. is applicable to a rod diameter of 80mm	

Wiper Ring Fitting Jig

WDB 2174	Cylinder Head insertion guide jig
Note: The above Part no. is applicable to a rod diameter of 80mm	

Section K - Engine



Care and Safety

Service Manual - Liftall 1253/1202/1553/1554

[Section 1 - General Information](#)

[Section 2 - Care and Safety](#)

[Section 3 - Routine Maintenance](#)

[Section B - Body and Framework](#)

[Section C - Electrics](#)

[Section D - Controls](#)

[Section E - Hydraulics](#)

[Section F - Transmission](#)

[Section G - Brakes](#)

[Section K - Engine](#)



Publication No.
9813/1650



Copyright © 2007 JCB SERVICE. All rights reserved. No part of this publication may be reproduced, stored in a retrieval system, or transmitted in any form or by any other means, electronic, mechanical, photocopying or otherwise, without prior permission from JCB SERVICE.

This as a preview PDF file from best-manuals.com



Download full PDF manual at best-manuals.com