



PARTS CATALOG

BACKHOE LOADER

B95B
TIER 3

CNH America LLC reserves the right to make improvements in design or changes in specifications at any time without incurring any obligation to install them on units previously sold.

All data given in this publication is subject to production variations. Dimensions and weights are only approximate. Illustrations do not necessarily show products in standard condition. For exact information about any particular product, please consult your Dealer.

This unit first became available 02-2008			
REVISION HISTORY			
Issue	Issue Date	Applicable Machines	Remarks
First Edition	01Feb 08	B95B Tier 3 Backhoe Loader	87659788 NA

TABLE OF CONTENTS

MAIN		SECTIONS
MPARTS	00	MAINTENANCE PARTS
SEC. 01	03	ENGINE
SEC. 01	04	ENGINE
SEC. 02		FUEL TANK - MUFFLER - RADIATOR - AIR CLEANER - CHASSIS
SEC. 03	01	TRANSMISSION
SEC. 04		FRONT AXLE
SEC. 05		REAR AXLE
SEC. 06		ELECTRICAL
SEC. 07		SLIDES VALVES
SEC. 08		BODY & HOOD
SEC. 09	01	LOADER
SEC. 09	03	BACKHOE
SEC. 11		WHEELS
SEC. 18		VARIATION
0.0040/01	01	OPTIONAL EQUIPMENT - NA
0.0040/01	02	OPTIONAL EQUIPMENT - NA
0.0040/01	03	OPTIONAL EQUIPMENT - NA
0.02.1/01		ENGINE
0.04.0/01		CRANKCASE
0.04.2		ENGINE OIL SUMP
0.04.3/01	01	CRANKCASE COVERS
0.04.3/01	02	CRANKCASE COVERS
0.04.3/01	03	CRANKCASE COVERS
0.06.0/01		CYLINDER HEAD
0.06.3/01	01	CYLINDER HEAD COVERS
0.06.3/01	02	CYLINDER HEAD COVERS
0.06.6/01		ROCKER SHAFT
0.07.1/01		MANIFOLD - INTAKE
0.07.7/01		EXHAUST MANIFOLD
0.08.0		CRANKSHAFT
0.08.1/01		CONNECTING ROD
0.08.2/01		PISTON - ENGINE
0.08.3		FLYWHEEL - ENGINE
0.08.4		PULLEY - CRANKSHAFT
0.10.5	01	DYNAMIC BALANCER, GEARS & SHAFTS
0.10.5	02	DYNAMIC BALANCER, GEARS & SHAFTS
0.12.0/01		CAMSHAFT - TIMING CONTROL
0.14.0/01	01	INJECTION PUMP
0.14.0/01	02	INJECTION EQUIPMENT - INJECTOR
0.14.0/01A		INJECTION PUMP - COMPONENTS
0.14.9/01		INJECTION EQUIPMENT - PIPING
0.17.0		ELECTRONIC INJECTION
0.17.3		MOTOR ELECTRIC INSTALLATION
0.20.0/01		FUEL FILTER
0.20.3/01		PIPING - FUEL
0.20.4/01		INJECTION EQUIPMENT - PIPING
0.24.0/01		TURBOCHARGER
0.27.0/01		ENGINE OIL DIPSTICK
0.30.0		OIL PUMP - ENGINE
0.30.2		OIL FILTERS - ENGINE

TABLE OF CONTENTS

0.30.5/01		PIPING - ENGINE OIL
0.31.5/01		HEAT EXCHANGER - ENGINE
0.32.0		WATER PUMP
0.32.3/01		COOLING SYSTEM - ENGINE
0.32.6/01		THERMOSTAT - ENGINE COOLING SYSTEM
0.34.0/01		WATER PUMP - CONTROL
0.34.5		FAN DRIVE
0.36.0		ACCESSORY ENGINE
0.40.0/01		ALTERNATOR
0.45.0/01		HOOKS - ENGINE
1.14.0		FUEL TANK & RELATED PARTS
1.14.6		FUEL PIPE
1.14.6/ A		FILTER FUEL - BREAKDOWN
1.15.0	01	MUFFLER & EXTENSIONS
1.15.0	02	EXHAUST TUBE
1.19.1		AIR CLEANER & HOSES
1.21.5		FRAME (CENTER PIVOT)
1.28.0		TRANSMISSION
1.28.0/ A	01	TORQUE CONVERTER COMPONENTS (2WD POWER-SHUTTLE)
1.28.0/ A	02	GEARSHIFT OUTER COMPONENTS (2WD POWER-SHUTTLE)
1.28.0/ A	03	GEARSHIFT HYDRAULIC COMPONENTS (2WD POWER-SHUTTLE)
1.28.0/ A	04	PARKING BRAKE (2WD POWER-SHUTTLE)
1.28.0/ A	05	TRANSMISSIONGEARING SPEED GEAR (2WD POWER-SHUTTLE)
1.28.0/ A	06	FRONT TRANSMISSION SHAFT (2WD POWER-SHUTTLE)
1.28.0/ A	07	GEARSHIFT GEAR DRIVES (2WD POWER-SHUTTLE)
1.28.0/ B	01	TORQUE CONVERTER COMPONENTS AND GEARSHIFT GEAR DRIVES (4WD POWER-SHUTTLE)
1.28.0/ B	02	GEARSHIFT OUTER COMPONENTS (4WD POWER-SHUTTLE)
1.28.0/ B	03	GEARSHIFT HYDRAULIC COMPONENTS (4WD POWER-SHUTTLE)
1.28.0/ B	04	PARKING BRAKE (4WD POWER-SHUTTLE)
1.28.0/ B	05	TRANSMISSIONGEARING SPEED GEAR (4WD POWER-SHUTTLE)
1.28.0/ B	06	FRONT TRANSMISSION SHAFT (4WD POWER-SHUTTLE)
1.28.0/ B	07	GEARSHIFT GEAR DRIVES (4WD POWER-SHUTTLE)
1.28.0/ B	08	REAR DRIVE SHAFT GEARS (4WD POWER-SHUTTLE)
1.28.6		OIL DIPSTICK / TOP UP (POWER-SHUTTLE)
1.29.1		TRANSMISSION ESTERNALSHIFTING CONTROLS (POWER-SHUTTLE)
1.38.1		FRONT AND REAR TRANSMISSION SHAFT (POWER-SHUTTLE)
1.39.8		TRANSMISSION OIL COOLING PIPES (POWER-SHUTTLE)
1.40.0	01	FRONT AXLE (2WD)
1.40.0	02	STEERING ASSY AND FRONT HUBS (2WD)
1.42.0		POWER STEERING HYDRAULIC SYSTEM
1.44.0/ B	01	REAR AXLE (POWER-SHUTTLE) (CENTER PIVOT) - NA
1.44.0/ B	02	DIFFERENTIAL LOCK ASSY AND ENGAGEMENT (POWER SHUTTLE) (CENTER PIVOT): NA
1.44.0/ B	03	REAR AXLE BEVEL GEAR SET ASSY (POWER SHUTTLE) (CENTER PIVOT): NA
1.44.1		DIFFERENTIAL CONTROL (POWER-SHUTTLE)
1.44.1/01		DIFFERENTIAL CONTROL (POWER-SHUTTLE) (CENTER PIVOT) - NA
1.75.2	01	FRAME REAR HARNESS AND GROUND CABLE (POWER SHUTTLE): NA
1.75.2	02	BATTERY LOCK-OUT SWITCH & GROUND WIRE (POWER SHUTTLE) - NA
1.75.2	04	ENGINE HARNESS (POWER SHUTTLE) - NA
1.82.0		HYDRAULIC OIL RESERVOIR

TABLE OF CONTENTS

1.82.3/01		HYDRAULIC PUMP (35+35-154L/MM)
1.82.6	01	HYDRAULIC SYSTEM PIPES: PUMP OIL DELIVERY
1.82.6	02	HYDRAULIC SYSTEM PIPES: CONTROL VALVE DELIVERY
1.82.6	03	HYDRAULIC SYSTEM PIPES: PRESSURE INTAKE
1.82.6	04	HYDRAULIC SYSTEM PIPES: CONTROL VALVE DISCHARGE
1.82.6	05	HYDRAULIC SYSTEM PIPES: RETURN TO TANK
1.82.6	06	HYDRAULIC SYSTEM PIPES: OIL FILTER AND CHECK VALVE
1.82.6	07	HYDRAULIC SYSTEM PIPES: LOADER ATTACHMENT CYLINDERS
1.82.6	10	HYDRAULIC SYSTEM PIPING
1.82.6	11	HYDRAULIC SYSTEM PIPING
1.82.6	12	HYDRAULIC SYSTEM PIPES 4WS (CENTER PIVOT): NA
1.82.6	13	HYDRAULIC SYSTEM PIPES: SWING CYLINDER
1.82.6	14	HYDRAULIC SYSTEM PIPES: BACKHOE ATTACHMENT CYLINDER
1.82.6	15	HYDRAULIC SYSTEM PIPES: BACKHOE ATTACHMENT BOOM CYLINDER
1.82.6	16	ROTATION PLATE HOSE CLAMPS (CENTER PIVOT)
1.82.6/01	01	FRONT HYDRAULIC PUMP INTAKE & OUTLET HOSES (CENTER PIVOT) - NA
1.82.6/01	02	REAR HYDRAULIC PUMP STABILIZER, LOADER & BACKHOE VALVE HOSES (CP) - NA
1.82.6/01	03	HYDRAULIC SYSTEM PIPES (CENTER PIVOT): NA: PRESSURE INTAKE
1.82.6/01	04	RETURN MANIFOLD HOSES - NA
1.82.6/01	05	FILTER ASSEMBLY & HOSE TO RETURN MANIFOLD (CENTER PIVOT) - NA
1.82.6/01	06	HYDRAULIC SYSTEM PIPES (CENTER PIVOT): NA: RETURN TO TANK
1.82.6/01	07	LOADER LIFT CYLINDER HOSES (CENTER PIVOT) - NA
1.82.6/01	08	LOADER BUCKET CYLINDER HOSES (CENTER PIVOT) - NA
1.82.6/01	09	BACKHOE SWING CYLINDER HOSES (CENTER PIVOT) - NA
1.82.6/01	10	BACKHOE CONTROL VALVE HOSES (CENTER PIVOT) - NA
1.82.6/01	11	ROTATION PLATE HOSE CLAMPS (CENTER PIVOT) - NA
1.82.6/01	12	BACKHOE CONTROL VALVE (CENTER PIVOT) - NA
1.82.6/01	13	DIPPER VALVE SECTION (CENTER PIVOT) - NA
1.82.6/01	14	BUCKET, SWING, & BOOM VALVE SECTION (CENTER PIVOT) - NA
1.83.0	01	GRID AND ACCESSORIES
1.83.0	02	GUARD AND ACCESSORIES
1.83.0	03	DOOR LOCK KIT
1.83.0	04	LOCK PLATE ASSY
1.83.0	05	TIPPING GUARD HINGE KIT
1.83.0	06	TIPPING GUARD ASSY COMPONENTS
1.87.2		CAB SCREEN
1.87.8		CAB FASTENERS
1.88.01	01	REAR ATTACHMENT TRANSPORT LOCK TIE ROD (CENTER PIVOT): NA
1.88.01	02	REAR ATTACHMENT TRANSPORT LOCK CABLE (CENTER PIVOT): NA
1.88.08	01	SWING POST ASSEMBLY, BUSHINGS & PINS
1.88.08	02	SWING POST PINS & TRANSPORT LOCK HOOK
1.88.11		ARMS AND JOINTS
1.88.11/01		LOADER CYLINDER
1.88.11/02	01	LOADER BUCKET CONTROL CYLINDER
1.88.11/02	02	LOADER BUCKET CONTROL CYLINDER
1.88.11/03		LIFT CYLINDER AND BUCKET PIPES
1.88.11/05A	01	SELF-LEVELING LINKAGE, LOADER CONTROLS (CENTER PIVOT MECHANIC) - NA
1.88.11/05A	02	SELF-LEVELING LINKAGE, LOADER ARM (CENTER PIVOT) - NA
1.88.11/06A		STABILIZER CYLINDERS (CENTER PIVOT)
1.88.11/07A		PIPES FOR STABILIZER CYLINDERS (CENTER PIVOT PILOT)

TABLE OF CONTENTS

1.88.11/07C		PIPES FOR STABILIZER CYLINDERS (CENTER PIVOT MECHANIC) - NA
1.88.11/08		RETURN TO DIG SENSOR
1.88.11/09	02	SWING CYLINDERS BACKHOE
1.88.11/09A		CYLINDERS AND ROTATION PLATE (CENTER PIVOT)
1.88.12/03		FRONT CONTROL VALVE SUPPORT AND TRANSMISSIONS (CENTER PIVOT - SIDE SHIFT)
1.88.12/03A		FRONT CONTROL VALVE SUPPORT AND TRANSMISSIONS (CENTER PIVOT) - NA
1.89.9/01		DISTRIBUTOR VALVE SUPPORT HUSCO (CENTER PIVOT) - NA
1.91.1		CAB : CEILING LIGHT
1.91.1/01		SAFETY FRAME: INSTRUMENTS AND GAUGES (ROPS) - NA
1.91.3		BACK-UP ALARM
1.91.4	01	CAB ROOF HARNESS (CAB, POWER SHUTTLE)
1.91.4	02	FUSE BOX CONTROL UNIT (CAB, POWER SHUTTLE)
1.91.4	03	IGNITON SWITCH, POWER POINT, FUSE PANEL & SIDE CONSOLE HARNESS (CAB PT)
1.91.4	04	FRONT HARNESS AND CONTROL UNIT (CAB, POWER SHUTTLE)
1.91.4	05	FRONT DASH (CAB POWER SHUTTLE)
1.91.4	06	CAB ELECTRIC SYSTEM COMPONENTS (CAB, POWER SHUTTLE)
1.91.4/02	01	CAB ROOF HARNESS (ROPS POWER SHUTTLE)
1.91.4/02	02	FUSE BOX CONTROL UNIT (ROPS POWER SHUTTLE)
1.91.4/02	03	IGNITON SWITCH, POWER POINT, FUSE PANEL & SIDE CONSOLE HARNESS (ROPS PT)
1.91.4/02	04	FRONT HARNESS AND CONTROL UNIT (ROPS POWER SHUTTLE)
1.91.4/02	05	RH CONSOLE WITH INSTRUMENTS (ROPS POWER SHUTTLE) - NA
1.91.4/02	06	CAB ELECTRIC SYSTEM COMPONENTS (ROPS POWER SHUTTLE)
1.91.5	01	FRONT AND REAR WINDSCREEN WIPERS
1.91.5	02	WINDSCREEN WIPERS RESERVOIR & NOZZLES
1.91.6		RADIO ANTENNA & SPEAKER COVER
1.91.7/01		LAMPS & LIGHTS - ROPS - NA
1.91.7/02		LAMPS & LIGHTS - CAB - NA
1.92.2		CAB: FRAME-DOOR
1.92.3		FRONT GLASSES AND SEALS
1.92.4	01	DOOR LATERAL GLASS FASTENERS
1.92.4	02	CAB SIDE GLASS FASTENERS
1.92.4	03	SIDE GLASSES
1.92.5		FENDERS, REAR
1.92.6	01	DOOR COMPONENTS
1.92.6	02	DOOR COMPLETION COMPONENTS: LOWER SIDE
1.92.6	03	DOOR CLOSURE HINGE COMPONENTS
1.92.8		FLAME TRAP SEAL, ROPS (POWER SHUTTLE)
1.92.9	01	REAR GLASSES AND COMPONENTS
1.92.9	02	REAR GLASS CLOSURE HINGE
1.92.9	03	HINGES AND REAR GLASS CLOSURE
1.93.0	01	CAB : SOFT TRIM (POWER SHUTTLE, POWER SHIFT)
1.93.0	02	CAB : SOFT TRIM (POWER SHUTTLE, POWER SHIFT)
1.93.0	03	CAB / SIDE COVERING AND FRONT FLOOR (POWER SHUTTLE: POWER SHIFT)
1.93.0	04	CAB / REAR CONSOLE AND FLOOR COVERING (POWER SHUTTLE: POWER SHIFT)
1.93.0/01	01	CAB : SOFT TRIM (POWER SHUTTLE, POWER SHIFT)
1.93.0/01	02	CAB / FLOOR COVERING AND COMPONENTS (POWER SHUTTLE: POWER SHIFT)
1.93.0/02	01	RIGHT SIDE COVERING, REAR CONSOLE ROPS (CENTER PIVOT): NA
1.93.0/03		MACHINES SOFT TRIMS (ROPS) - NA

TABLE OF CONTENTS

1.93.4		CAB: REAR MIRROR - SUN SCREEN
1.93.5	01	CAB / FRONT DASHBOARD
1.93.5	02	CAB / DASHBOARD FASTENERS AND GASKETS
1.93.5/01	01	FRONT CONSOLE - ROPS (POWER SHUTTLE) - NA
1.93.5/01	02	RH SIDE CONSOLE SEAL & CLIPS - ROPS (POWER SHUTTLE) - NA
1.93.7		INNER REAR VIEW MIRROR (POWER SHUTTLE) ROPS
1.94.0/01		CAB / ROPS: ROOF AND INNER COVERING: NA
1.94.2		HEATER WATER HOSES
1.95.0	01	CAB / ROPS : BRAKE PEDAL
1.95.0	02	CAB / ROPS / BRAKE PUMP
1.95.0	03	CAB / ROPS / BRAKE SYSTEM PIPES
1.95.0/ A		CAB / ROPS / BRAKE PUMP CYLINDER
1.95.1		CAB / ROPS / PARKING BRAKE LEVER AND CONTROL CABLE
1.95.2		TRANSPORT LOCK CONTROL - NA
1.95.3		HAND/PEDAL ELECTRONIC ACCELERATOR CONTROL
1.95.5	01	STEERING COLUMN AND COVERING: NA
1.95.5	02	STEERING SYSTEM SLEEVES: NA
1.95.5/ A	01	POWER STEERING: NA
1.96.0		FOWARD/REVERSE & MULTI-PURPOSE LEVER
1.96.2	01	STABILIZER CONTROL (SIDE SHIFT - EU) - (CENTER PIVOT - NA)
1.96.2	02	STABILIZER CONTROL (CENTER PIVOT) - NA
1.96.2/01		PILOT CONTROL DIAGNOSTICS
1.96.7/04		CLOSING PINS AND PLUGS ROPS (CENTER PIVOT): NA
1.96.7/05		CAB / VARIOUS COMPONENTS (CENTER PIVOT): NA
1.96.7/06		CAB: VARIOUS COMPONENTS (CENTER PIVOT): NA
1.96.7/07		CLOSING PINS AND PLUGS ROPS (CENTER PIVOT): NA
1.98.0/01		INFORMATION SYMBOL DECALS (POWER SHUTTLE - POWER SHIFT) - NA
1.98.1	08	IDENTIFICATION MODEL: GUARD DECALS
1.98.1	09	MODEL IDENTIFICATION B90B / B90BLR - B959B / B95BLR - B100B / B100BLR
81.00		FRONT WHEELS (2WD) - NA
82.00	01	DRIVING WHEELS(4WD) - NA
83.00	01	REAR WHEELS - NA
095		STABILIZER CONTROL WITHOUT AUTO-UP (CENTER PIVOT)
096		STABILIZER CONTROL WITH AUTO-UP (CENTER PIVOT)
131		SINGLE BATTERY
175		AIR INTAKE CAP & PRE-CLEANER
176		AIR INTAKE CAP & PRE-CLEANER
201		SHOVEL AND REAR LIFTING HOOKS
284		REAR MIRROR (CAB) - NA
290		FRONT COUNTERWEIGHT: 2WS
291		FRONT COUNTERWEIGHT: 2WS
302	01	TWO-SECTION CONTROL VALVE FOR LOADER
302	02	LOADER ATTACHMENT 2-SECTION CONTROL VALVE: INTAKE SECTION
302	03	LOADER ATTACHMENT 2-SECTION CONTROL VALVE: BOOM SECTION
302	04	TWO-SECTION CONTROL VALVE FOR LOADER
321		DOUBLE BATTERY
331	01	TOWER ASSY 6 SECTIONS (CENTER PIVOT)
331	02	PILOT CONTROL VALVE SUPPORT, COMPLETE
331	03	PILOT CONTROL VALVE SUPPORT, COMPLETE
331	04	PILOT CONTROL VALVE SUPPORT, COMPLETE
331	05	PILOT CONTROL VALVE SUPPORT, COMPLETE

TABLE OF CONTENTS

331	06	6 SECTION PILOT CONTROL VALVE SUPPORT, COMPLETE
331	07	PILOT CONTROL VALVE SUPPORT, COMPLETE
331	08	PILOT CONTROL VALVE SUPPORT, COMPLETE
331	09	PILOT CONTROL VALVE SUPPORT, COMPLETE
331/ A		PROPORTIONAL CONTROL VALVE 6 SECTIONS
331/ B	01	BACKHOE CONTROL VALVE, 6 SECTIONS (CENTER PIVOT)
331/ B	02	BACKHOE CONTROL VALVE, INLET SECTION (CENTER PIVOT)
331/ B	03	BACKHOE CONTROL VALVE, BOOM SECTION (CENTER PIVOT)
331/ B	04	BACKHOE CONTROL VALVE, SWING SECTION (CENTER PIVOT)
331/ B	05	BACKHOE CONTROL VALVE, BUCKET SECTION (CENTER PIVOT)
331/ B	06	BACKHOE CONTROL VALVE, DIPPERSTICK SECTION (CENTER PIVOT)
331/ B	07	BACKHOE CONTROL VALVE, STABILIZER SECTION (CENTER PIVOT)
331/ B	08	BACKHOE CONTROL VALVE, BOOM SECTION (CENTER PIVOT)
331/ B	09	BACKHOE CONTROL VALVE, SWING SECTION (CENTER PIVOT)
331/ B	10	BACKHOE CONTROL VALVE, BUCKET SECTION (CENTER PIVOT)
331/ B	11	BACKHOE CONTROL VALVE, DIPPERSTICK SECTION (CENTER PIVOT)
331/ B	12	BACKHOE CONTROL VALVE, STABILIZER SECTION (CENTER PIVOT)
331/ C	01	PILOT VALVE OF HYDRAULIC CONTROL LEVER (RIGHT HAND)
331/ C	02	VALVE, JOYSTICK PILOT CONTROLS (LEFT HAND)
333	01	TOWER ASSY 7 SECTIONS (CENTER PIVOT)
333	02	TOWER ASSY FOR 7-SECTION PILOT CONTROL: CONTROL VALVE HYDRAULIC SYSTEM, PROPORTIONAL VALVE
333	03	TOWER ASSY FOR 7-SECTION PILOT CONTROL (CENTER PIVOT): CONTROL VALVE INSTALLATION
333	04	TOWER ASSY FOR 7-SECTION PILOT CONTROL (CENTER PIVOT): TELESCOPIC CYLINDER SYSTEM
333	05	TOWER ASSY FOR 7-SECTION PILOT CONTROL (CENTER PIVOT): BUCKET CYLINDER SYSTEM
333/ A		PROPORTIONAL CONTROL VALVE 7 SECTIONS
333/ C	01	PILOT VALVE OF HYDRAULIC CONTROL LEVER (RIGHT HANDS) 7 SPOOLS
333/ C	02	PILOT VALVE OF HYDRAULIC CONTROL LEVER (RIGHT HANDS) 7 SPOOLS
333/01B	01	7 SECTIONS EXCAVATOR CONTROL VALVE (CENTER PIVOT) - NA
333/01B	02	BACKHOE ATTACHMENT 7-SECTION CONTROL VALVE (CENTER PIVOT): NA: TELESCOPIC CYLINDER
335		TOWER ASSY 7 SECTIONS (CENTER PIVOT)
336/01	01	TWO SECTION LOADER CONTROL VALVE (CENTER PIVOT) - NA
336/01	02	LOADER CONTROL VALVE, TWO SECTION, CAP & UNLOAD VALVE (CENTER PIVOT) - NA
336/01	03	LOADER CONTROL VALVE, TWO SECTION, RELIEF & CHECK VALVES (CENTER PIVOT) - NA
336/01	04	LOADER CONTROL VALVE, TWO SECTION, BY-PASS KIT (CENTER PIVOT) - NA
336/01	05	LOADER CONTROL VALVE, TWO SECTION, UNLOAD KIT OR DUMP VALVE (CENTER PIVOT) - NA
337	01	LOCKING VALVE ON LOADER ATTACHMENT TIPPING CYLINDERS
337	02	LOCK VALVE ON LOADER LIFT CYLINDERS
338		LOCK VALVE ON LOADER LIFT CYLINDERS
344	01	STABILIZER CONTROL VALVE, TWO SECTION (CENTER PIVOT) - NA
344	02	STABILIZER CONTROL VALVE, LH & RH SECTION (CENTER PIVOT) - NA
346	01	A/C HOUSING & FILTERS
346	02	A/C BLOWER & COILS
346	03	HEATER COIL HOSES

TABLE OF CONTENTS

346	04	A/C & HEATER CONTROL PANEL
346	05	A/C & HEATER CONSOLE DUCTS
347	01	HOUSING & FILTERS
347	02	HEATER BLOWER & COILS
347	03	HEATER COIL HOSES
347	04	A/C & HEATER CONTROL PANEL
347	05	A/C & HEATER CONSOLE DUCTS
347	06	CAB HEATING COATING PLUG
386		12" (305MM) HD BACKHOE BUCKET WITH PIN TEETH - NA
387		18" (457MM) HD BACKHOE BUCKET WITH PIN TEETH - NA
388		24" (610MM) HD BACKHOE BUCKET WITH PIN TEETH - NA
389		30" (762MM) HD BACKHOE BUCKET WITH PIN TEETH - NA
390		LOADER CONTROL VALVE, TWO SECTION, LEVER - NA
390/01		36" (910MM) HD BACKHOE BUCKET WITH PIN TEETH - NA
391		LOCK VALVE FOR BUCKET 4X1 / 6X1
392	01	LOCKING VALVE ON BOOM CYLINDER AND BACKHOE ATTACHMENT
392	02	LOCKING VALVE ON CYLINDER AND BACKHOE ATTACHMENT
393		2 LEVER BACKHOE CONTROLS, LEVER, BOOT & DECALS - NA
394	01	4-LEVER BACKHOE ATTACHMENT CONTROLS, CONSOLE, LEVERS AND SQUARE LEVER (CENTER PIVOT: SIDE SHIFT): CONTROL LEVERS
394	02	4-LEVER BACKHOE ATTACHMENT CONTROLS, UPPER TIE ROD ASSY (CENTER PIVOT: SIDE SHIFT): UPPER TIE RODS
394	03	4-LEVER BACKHOE ATTACHMENT CONTROLS, LOWER TIE ROD ASSY (CENTER PIVOT: SIDE SHIFT): LOWER TIE RODS
394/01	01	2-LEVER ISO BACKHOE ATTACHMENT CONTROLS, LEVERS, DUSTPROOF, DECALS (CENTER PIVOT) - NA -CONTROL LEVERS
402	01	(4WD) FRONT AXLE, HOUSING, BUSHINGS & SUPPORTS - NA
402	02	(4WD) FRONT AXLE, SWIVEL HOUSING & STEERING CYLINDER - NA
402	03	(4WD) FRONT AXLE, HUBS - NA
402	04	(4WD) FRONT AXLE, RING GEAR & PINION ASSEMBLY - NA
402	05	(4WD) FRONT AXLE, DIFFERENTIAL - NA
402	06	FRONT AXLE 4WD, ARTICULATED AXLE SHAFT
416		SYSTEM HAMMER COMPONENTS (CAB - ROPS)
437		GLIDE RIDE VALVE, HYDRAULIC SYSTEM FOR MACHINE FRAME LEVELLING
471	01	BUCKET 4X1 (1 M ³) WITH BLADE "COMMON GREY"
471	02	4X1 BUCKET (1 M ³) WITH "COMMON GREY" BLADE: BUCKET BREAKDOWN
471/01		HYDRAULIC CYLINDER (BUCKET 4X1-6X1)
472	01	BUCKET 4X1 (1 M ³) WITH TINE "COMMON GREY"
472	02	4X1 BUCKET (1 M ³) WITH "COMMON GREY" TEETH: BUCKET BREAKDOWN
473	01	BUCKET 6X1 (1 M ³) WITH BLADE "COMMON GREY"
473	02	6X1 BUCKET (1 M ³) WITH "COMMON GREY" BLADE: BUCKET BREAKDOWN
474	01	BUCKET 6X1 (1 M ³) WITH TINE "COMMON GREY"
474	02	6X1 BUCKET (1 M ³) WITH "COMMON GREY" TEETH: BUCKET BREAKDOWN
514	01	SHORT DIPPER
514	02	SHORT DIPPER
514	03	HYDRAULIC LIFTING CYLINDER
514	04	HYDRAULIC DITCHING CYLINDER
515/01		12" (305MM) BACKHOE BUCKET WITH PIN TEETH - NA
516/01		18" (457MM) BACKHOE BUCKET WITH PIN TEETH - NA
517/01		24" (610MM) BACKHOE BUCKET WITH PIN TEETH - NA
518/01		30" (762MM) BACKHOE BUCKET WITH PIN TEETH - NA

TABLE OF CONTENTS

519/01		36" (910MM) BACKHOE BUCKET WITH PIN TEETH - NA
520		(0.88 M ³) BUCKET WITHOUT TINES
520/01		18" (457MM) BACKHOE BUCKET WITH PIN TEETH (EXTRA HD) - NA
521		24" (610MM) BACKHOE BUCKET WITH PIN TEETH (EXTRA HD) - NA
522		(1 M ³) BUCKET WITHOUT TINES
522/01		STANDARD (1 M ³) BUCKET WITH FORKS
525		STANDARD (1 M ³) BUCKET WITH FORKS AND REVERSIBLE BLADE
527		(0.88 M ³) BUCKET AND EXTRA REVERSIBLE BLADE
535		STABILIZER FOOT GROUND (CENTER PIVOT)
536		STANDARD (1 M ³) BUCKET WITH TINE
536/02		REVERSIBLE STABILIZER FOOT (CENTER PIVOT)
537		STANDARD (1 M ³) BUCKET WITH EXTRA REVERSIBLE BLADE
548		DITCH CLEANING BUCKET
622		INTERNAL FAN - CAB
636	07	ENGINE VERSION: STARTER MOTOR
636	08	ACCESSORY ENGINE - ALTERNATOR
638	01	RADIATOR GUARDS
638	02	COOLANT RADIATOR, HYDRAULIC FLUID AND TRANSMISSION OIL
638	03	AFTER-COOLER COOLING PIPING
638	04	PARKEERREM (CABINE: ROPS)
638	05	ENGINE VERSION: SUPPORTS
638	06	ENGINE OUTFIT: FAN WITH VISCOUS JOINT: EU
638	07	ACCESSORY ENGINE - STARTER
638	08	ACCESSORY ENGINE: ALTERNATOR
639	01	RADIATOR GUARDS
639	02	COOLANT RADIATOR, HYDRAULIC FLUID AND TRANSMISSION OIL
639	03	AFTER-COOLER COOLING PIPING
639	04	PARKEERREM (CABINE: ROPS)
639	05	ENGINE VERSION: SUPPORTS
639	06	ENGINE OUTFIT: FAN WITH VISCOUS JOINT
639	07	ENGINE VERSION: STARTER MOTOR
639	08	ACCESSORY ENGINE
646	01	MACHINE PART AIR CONDITIONING SET
646	02	A/C COMPRESSOR ATTACHING GROUP
646	03	A/C COMPRESSOR
646	04	A/C FILTER & CONDENSER ATTACHING GROUP
650		STEERING COLUMN, FIXED & ADJUSTABLE
698		GLIDE RIDE VALVE, HYDRAULIC SYSTEM FOR MACHINE FRAME LEVELLING & ON/OFF SWITCH
699		HAND HAMMER SWITCH
700	01	4X1 AND 6X1 BUCKET ARM HYDRAULIC DUCTS (POWER SHIFT, POWER SHUTTLE)
700	02	4X1 AND 6X1 BUCKET MACHINE HYDRAULIC DUCTS (POWER SHIFT, POWER SHUTTLE)
700	03	THREE-SECTION CONTROL VALVE FOR LOADER (POWER SHIFT , POWER SHUTTLE)
721	01	TELESCOPIC DIPPER AT PEDAL CONTROL (CENTER PIVOT): CONTROL VALVE: NA
721	02	
721	03	HED TELESCOPIC CONTORL VALVE, SECTION HOSES(CENTER PIVOT) - NA
721	04	TELESCOPIC DIPPER AT PEDAL CONTROL (CENTER PIVOT): TELESCOPIC DIPPER SYSTEM: TELESCOPIC CYLINDER: NA

TABLE OF CONTENTS

721	05	TELESCOPIC DIPPER AT PEDAL CONTROL (CENTER PIVOT): TELESCOPIC DIPPER SYSTEM: BUCKET CYLINDER: NA
721	06	TELESCOPIC DIPPER AT PEDAL CONTROL (CENTER PIVOT): NA
724/ A		REAR HAMMER CONTROL VALVE
724/01	01	MACHINE HYDRAULIC SYSTEM FOR HAMMER (CENTER PIVOT)
724/01	02	HAMMER ARM HYDRAULIC SYSTEM (CENTER PIVOT)
724/02		HYDRAULIC SYSTEM FOR HAMMER (CENTER PIVOT)
725		HAMMER KIT FROM LIFTING ARM TO DEMOLITION ARM
725/01	01	4X1 AND 6X1 BUCKET ARM ASSY HYDRAULIC SYSTEM (POWER SHUTTLE): NA
725/01	02	4X1 AND 6X1 BUCKET MACHINE HYDRAULIC DUCT ASSY (POWER SHUTTLE): NA
725/01	03	LOADER CONTROL VALVE, THREE SECTION (CENTER PIVOT) - NA
725/01	04	LOADER CONTROL VALVE, THREE SECTION, CAP & UNLOAD VALVE (CENTER PIVOT) - NA
725/01	05	LOADER CONTROL VALVE, THREE SECTION, RELIEF & CHECK VALVES (CENTER PIVOT) - NA
725/01	06	THREE-SECTION CONTROL VALVE FOR LOADER - BUCKET SECTION 4X1 - 6X1(CENTER PIVOT) - NA
727/01		HED FOOT PEDAL, CABLE & DECALS (CENTER PIVOT) - NA
728	01	HAND HAMMER SYSTEM: DELIVERY
728	02	HAND HAMMER SYSTEM: RETURN
728	03	MANUAL HAMMER VALVE
733		REAR MECHANICAL QUICK-COUPLING
734		FRONT MECHANICAL QUICK-COUPLING
758		ROTATING BEACON
787		FRONT CONSOLE WITHOUT SPEEDOMETER (POWER SHUTTLE, ROPS)
787/01		FRONT CONSOLE WITHOUT SPEEDOMETER (POWER SHUTTLE, CAB)
788		FRONT CONSOLE WITH SPEEDOMETER (ROPS)
788/01		FRONT CONSOLE WITH SPEEDOMETER (CAB) (POWER SHUTTLE)
789		SPEED SENSOR(P.SHUTTLE)
793		FRONT WORKING LIGHT - CAB
793/01		FRONT WORKING LIGHT (ROPS)
794		LAMPS & LIGHTS - CAB
794/01		LAMPS & LIGHTS (ROPS)
796		ANTITHEFT
803		FENDERS, FRONT
835		REAR MUDGUARD AND ROOF (ROPS: CAB): NA
851		CLOTH SEAT & ATTACHING HARDWARE - CABINE
851/01	01	CLOTH SEAT CUSHIONS, ARMRESTS & RELATED PARTS
851/01	02	CLOTH SEAT MOUNTING PLATE, ADJUSTING RAILS & SEAT BELT
851/01	03	CLOTH SEAT UPPER SUSPENSION PARTS
851/01	04	CLOTH SEAT LOWER SUSPENSION PARTS
855		AIR RIDE CLOTH SEAT & ATTACHING HARDWARE - CABINE
855/01	01	AIR RIDE CLOTH SEAT CUSHIONS, ARMRESTS & RELATED PARTS
855/01	02	AIR RIDE CLOTH SEAT MOUNTING PLATE, ADJUSTING RAILS & SEAT BELT
855/01	03	AIR RIDE CLOTH SEAT UPPER SUSPENSION PARTS
855/01	04	AIR RIDE CLOTH SEAT LOWER SUSPENSION PARTS
855/01	05	AIR RIDE CLOTH SEAT COMPRESSOR & TUBING
856		VINYL SEAT CUSHIONS, ARMRESTS & RELATED PARTS (ROPS)
856/01	01	VINYL SEAT WITH ARMRESTS & MOUNTING HARDWARE (ROPS)
856/01	02	VINYL SEAT MOUNTING PLATE, ADJUSTING RAILS & SEAT BELT (ROPS)
856/01	03	VINYL SEAT UPPER SUSPENSION PARTS (ROPS)

TABLE OF CONTENTS

856/01	04	VINYL SEAT LOWER SUSPENSION PARTS (ROPS)
879		CAB RIGHT REAR MIRROR
888		GUARD AND DIPPER DECAL
900	01	LONG DIPPER: ASSY
900	02	BOOM - LONG DIPPER
900	03	LONG DIPPER
900	04	LONG/SHORT DIPPER - BUCKET MOTION
900	05	DIPPER: DIPPER SYSTEM, BOOM AND DIPPER CYLINDER
900	06	DIPPER: BUCKET CYLINDER HYDRAULIC SYSTEM
900	07	DIPPER: BOOM CYLINDER HYDRAULIC SYSTEM
900	08	DIPPER - HYDRAULIC SYSTEM
900	09	HYDRAULIC LIFTING CYLINDER - TELESCOPIC DIPPER LONG
900	10	HYDRAULIC DITCHING CYLINDER
900	11	HYDRAULIC BUCKET CYLINDER
901	01	LONG TELESCOPIC DIPPER: ASSY
901	02	TELESCOPIC DIPPER LONG
901	03	TELESCOPIC DIPPER - HYDRAULIC SYSTEM
901	04	LONG TELESCOPIC DIPPER: TELESCOPIC HYDRAULIC CYLINDER
902	01	SHORT TELESCOPIC DIPPER: ASSY
902	02	TELESCOPIC DIPPER SHORT
902	03	SHORT TELESCOPIC DIPPER: TELESCOPIC HYDRAULIC CYLINDER
990		TOOL KIT
993	01	PLATES - NA
993	02	PLATES - NA
995		COLD START

GENERAL INFORMATION

PROPRIETARY NOTICE

The contents of this manual are proprietary data of this company. Reproduction or use of any part for other than the operation and maintenance of our equipment is permissible only if expressly authorized in writing.

Additional copies may be obtained from your dealer. Address requests for copies to your Dealer and refer to the publication part number appearing on the bottom of the rear catalog cover or on the title page.

COMPANY POLICY

Company policy, which is one of continuous improvement, reserves the right to change prices and to make changes in design and specification at any time without notice and without obligation to modify units previously built.

All data given in this book is subject to production variations. Dimensions and weights are approximate only and the illustrations do not necessarily show machines in standard condition. For exact information about any particular machine please consult your dealer.

PARTS AND ACCESSORIES

Genuine parts and accessories have been specifically designed for these machines.

We would like to point out that “non-genuine” parts and accessories have NOT been examined and released by the Company. The installation and or use of such products could have negative effects upon the design characteristics of your machine and thereby affect its safety. The company is not liable for any damage caused by the use of “non-genuine” parts and accessories.

IMPROVEMENTS

We are continually striving to improve our products. We reserve the right to make improvements or changes when it becomes practical and possible to do so, without incurring any obligation to make changes or additions to the equipment sold previously.

MODEL CODES

The range of machines listed may not be available in all countries or markets therefore, for the latest information consult your local dealer.

OWNER ASSISTANCE

We want you to be completely satisfied with your investment. Normally any problems with your equipment will be handled by your dealer's Service Department; however, misunderstandings can occur. If your problem has not been handled to your satisfaction, we suggest the following:

1. Contact the owner or General Manager of the dealership, explain the problem, and request assistance. When additional assistance is needed, your dealer has direct access to our office.
2. Provide your dealer with:
 - Your Name, Address, and Telephone number
 - Machine Model and Serial Number
 - Dealership Name and Address
 - Machine purchase date and amount of use
 - Nature of problem

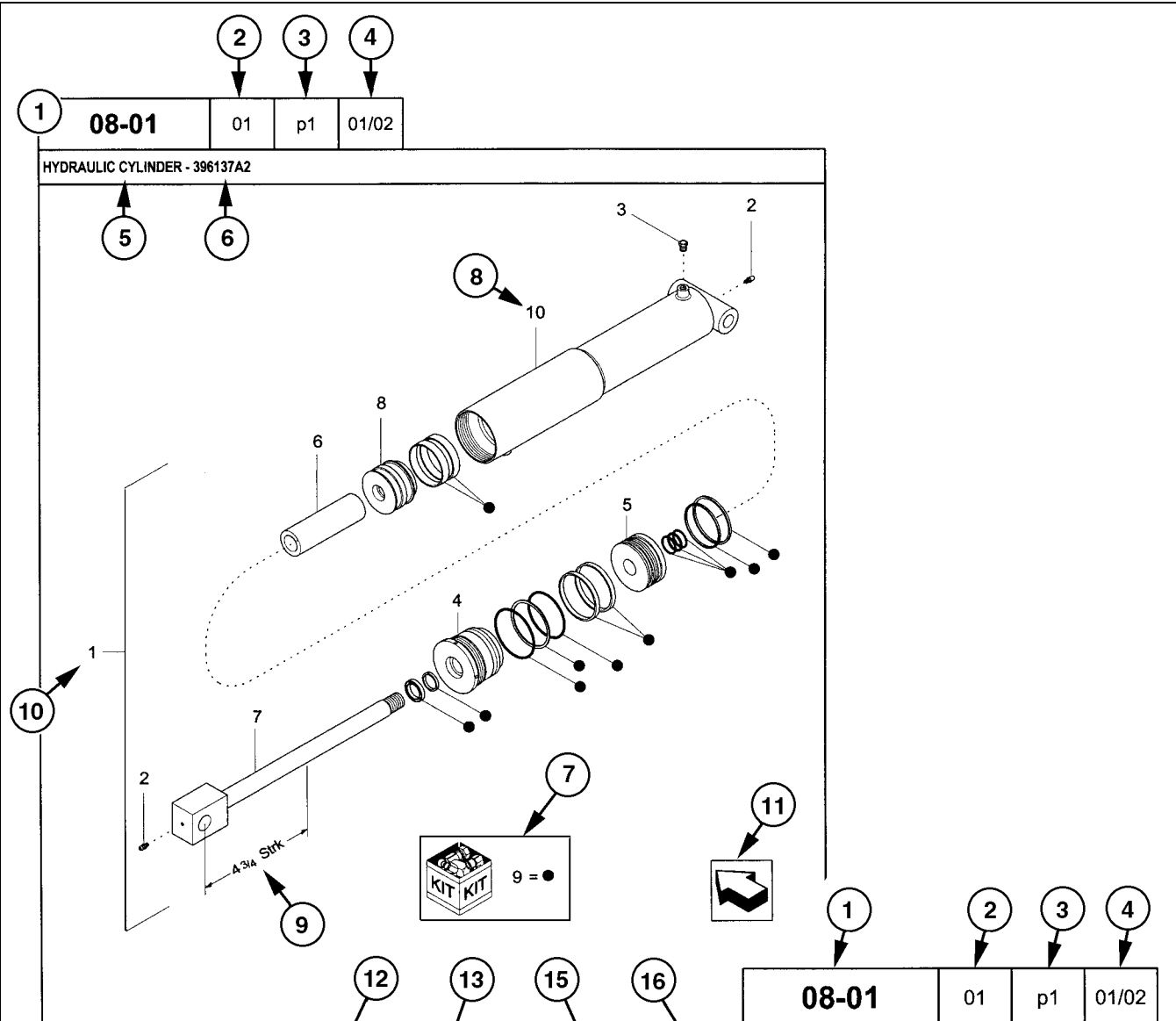
Be aware that your problem will likely be resolved in the dealership using the dealer's facilities, equipment, and personnel. So it is important that your initial contact be with the dealer.

SPARE PARTS

To maintain operating efficiency, use original spare parts.

When ordering parts, give the following information:

- Machine Model
- Machine and Engine Serial Numbers
- Part Number from the Parts Catalog



REF	FN	PART NUMBER	YR/SN	QTY	DESCRIPTION
1	1	396137A2	BTW 01/85 & 02/02	1	CYLINDER ASSY. 4-3/4 in strk, Inc 2-10
2		31-95	Before 01/85	2	FITTING
2		219-8	From 01/85	2	NIPPLE, LUBE Grease, 1/4 tpr x 17/32
3		{402475A2}		1	BREATHER
4		402474A1		1	CAP CYLINDER END
5		402468A1	BSN JJC0189199	1	PISTON ROD/GLAND
5		145221C3	ASN JJC0189200	1	PISTON
6		402471A1		1	SPACER
7		402473A1		1	ROD, PISTON
8		402469A1		1	PISTON ROD/GLAND
9		402476A1		1	PACKAGE, SEALS
10		NSS		1	NOT SERVICED SEPARAT CASE ASSEMBLY
(1)	08-20				
		STANDARD			
		MODELS			

HOW TO USE YOUR PARTS CATALOG

1. Figure Number
2. Sequence Code within the Figure Number
3. Page Number within the Sequence Code
4. Date of Printing (month / year)
5. Figure Description
6. General information regarding the figure
7. Parts supplied in repair kits per symbol reference
8. Figure call-out of the part number (REF)
9. Technical specifications relating to the part indicated
10. Figure call-out includes bracketed items, the included items may also be listed in the additional description area
11. Orientation - Arrow indicates front of the machine
12. Footnote - Additional information relating to the part number. In this example, 08-20 equals another figure that this part is shown on
13. Part Number
 - NSS = Not Serviced Separately (Non-serviced parts)
 - Bracketed numbers = not available as service parts in this market
14. Not Available as service part in this market
15. YR/SN
 - Year
 - Before 01/85 = Part valid for production January 1985 and before
 - From 01/85 = Part valid for production from January 1985 and after
 - BTW 01/85 & 02/02 = Part valid for machines produced between January 1985 and February 2002.
 - Serial Number (P.I.N.)
 - BSN JJC0268800 = Part valid for serial number JJC0268800 and below
 - ASN JJC0268800 = Part valid for serial number JJC0268800 and above
 - BTW JJC0178000 & JJC0179000 = Part valid for serial numbers between JJC0178000 & JJC0179000
16. Total Quantity of the Part referred to in the page. The quantity can be replaced by the following indications:
 - AR = As Required
 - X = As required
17. Part Description
18. Additional description of the part to help confirm identification
19. Figure Notes
20. Model Number(s)

RIGHT-HAND AND LEFT-HAND

The reference to right-hand and left-hand in this catalog is identified by the operator standing at the rear of the basic unit (without rear attachment), looking toward the front of the machine (in normal forward travel).

For pages covering any machine attachments, right-hand and left-hand are defined by the operator sitting in the position for proper operation of the attachment.

DIMENSIONS

Metric and U.S. hardware dimensions do not show the numeric designations of standard coarse threads. A number following a semi colon (;) is the class or grade of hardware. A comma (,) represents the decimal point (.) used in U.S. dimensions.

EXPLANATION OF ABBREVIATIONS

AC	Alternating Current
adj	adjustable
amp	ampere
AR	As required
ASN	Serial number and after P.I.N. and after
blkhd	bulkhead
br	branch
BSN	before Serial number before P.I.N.
BTW	between
cc	cubic centimetre
cl	class
cmprsn	compression
cn pt	cone point
cp pt	cup point
CRS	Chrome Alloy Steel
CST	Carbon Steel
cu yd	cubic yard
DC	Direct Current
deg	degree
dg pt	dog point
dia	diameter
dr type	drive type
fc	face
fc sl	face seal
fem	female
fem PT	female pipe thread
fl	flare
flat pt	flat point
ft	feet or foot
ga	gauge
gal	gallon or gallons
gpm	gallons per minute
gr	grade
hd	head
hdg pt	half dog point
hp	horsepower
ID	inside diameter
in	inch or inches
Incl.	Includes
inv fl	inverted flare
K	kilo
kg	kilogram
km/h	kilometers per hour

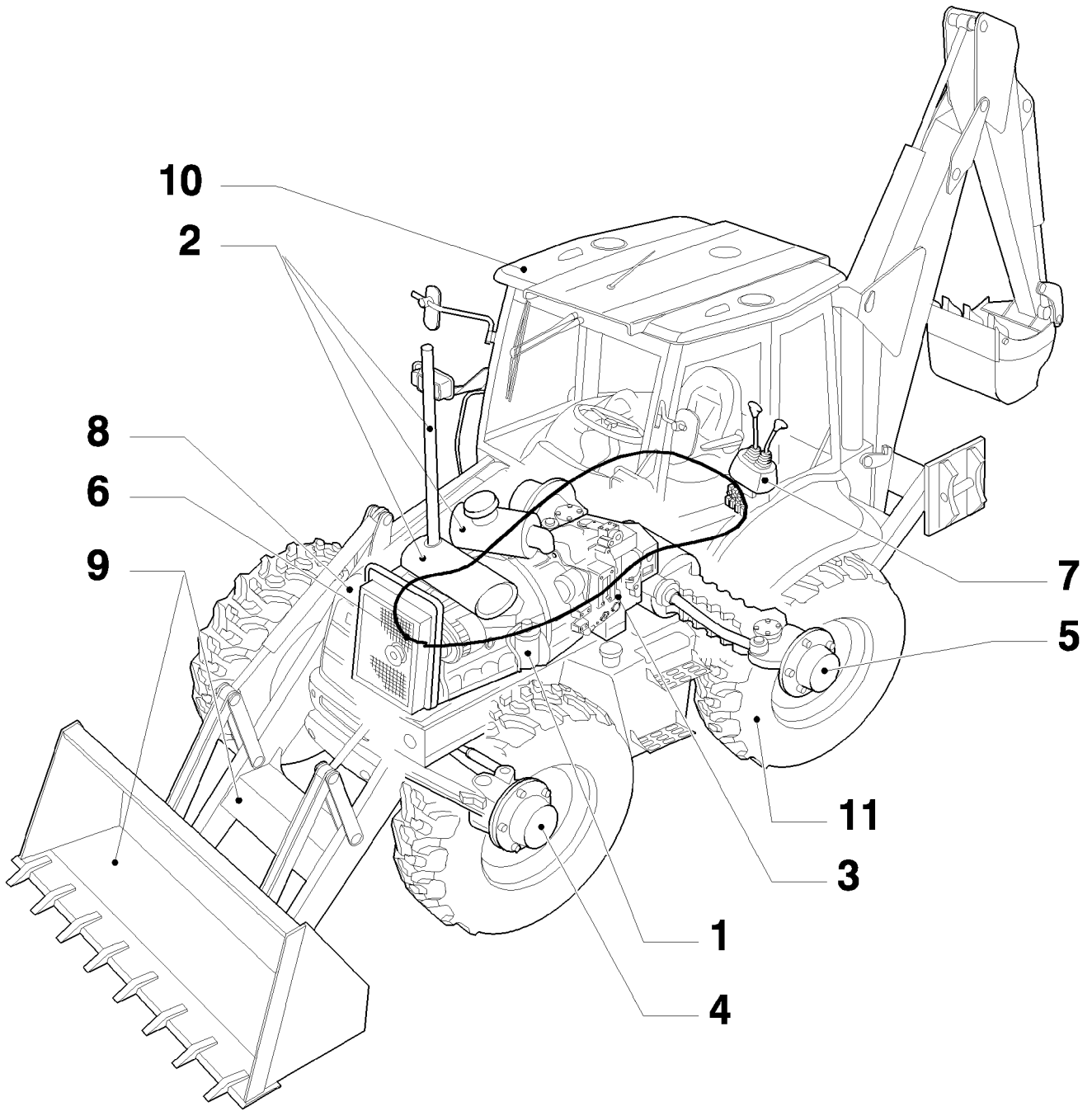
L	litre
lb	pounds
lb-ft	pound-foot
lg	long
LH	left-hand
LH thd	left-hand thread
M	(prefix) metric thread size
m	metre
ml	milliliter
mm	millimetre
NF	National Fine
No.	number
NPT	National Pipe Thread
NS	National Super Fine
OD	outside diameter
ohm	electrical unit of resistance
Or	O-ring
ORB	O-ring boss
ORFS	O-ring face seal
ov cntr	over center
ov pt	oval point
oz	ounce
P	pitch
psi	pounds per square inch
pt	pint
PT	pipe thread
rd	round
rd holes	round holes
RH	right-hand
RH thd	right-hand thread
rpm	revolutions per minute
sl	self-locking
sq	square
SST	Stainless Steel
st	self-tapping
strk	stroke
sw	swivel
T	teeth
thk	thick
tpr	taper
tube OD	tube outside diameter
V	volt or volts
W	watt or watts
X	as required
yd	yard

SECTION INDEX

General

MAIN		SECTIONS
MPARTS	00	MAINTENANCE PARTS
SEC. 01	03	ENGINE
SEC. 01	04	ENGINE
SEC. 02		FUEL TANK - MUFFLER - RADIATOR - AIR CLEANER - CHASSIS
SEC. 03	01	TRANSMISSION
SEC. 04		FRONT AXLE
SEC. 05		REAR AXLE
SEC. 06		ELECTRICAL
SEC. 07		SLIDES VALVES
SEC. 08		BODY & HOOD
SEC. 09	01	LOADER
SEC. 09	03	BACKHOE
SEC. 11		WHEELS
SEC. 18		VARIATION
0.0040/01	01	OPTIONAL EQUIPMENT - NA
0.0040/01	02	OPTIONAL EQUIPMENT - NA
0.0040/01	03	OPTIONAL EQUIPMENT - NA

SECTIONS



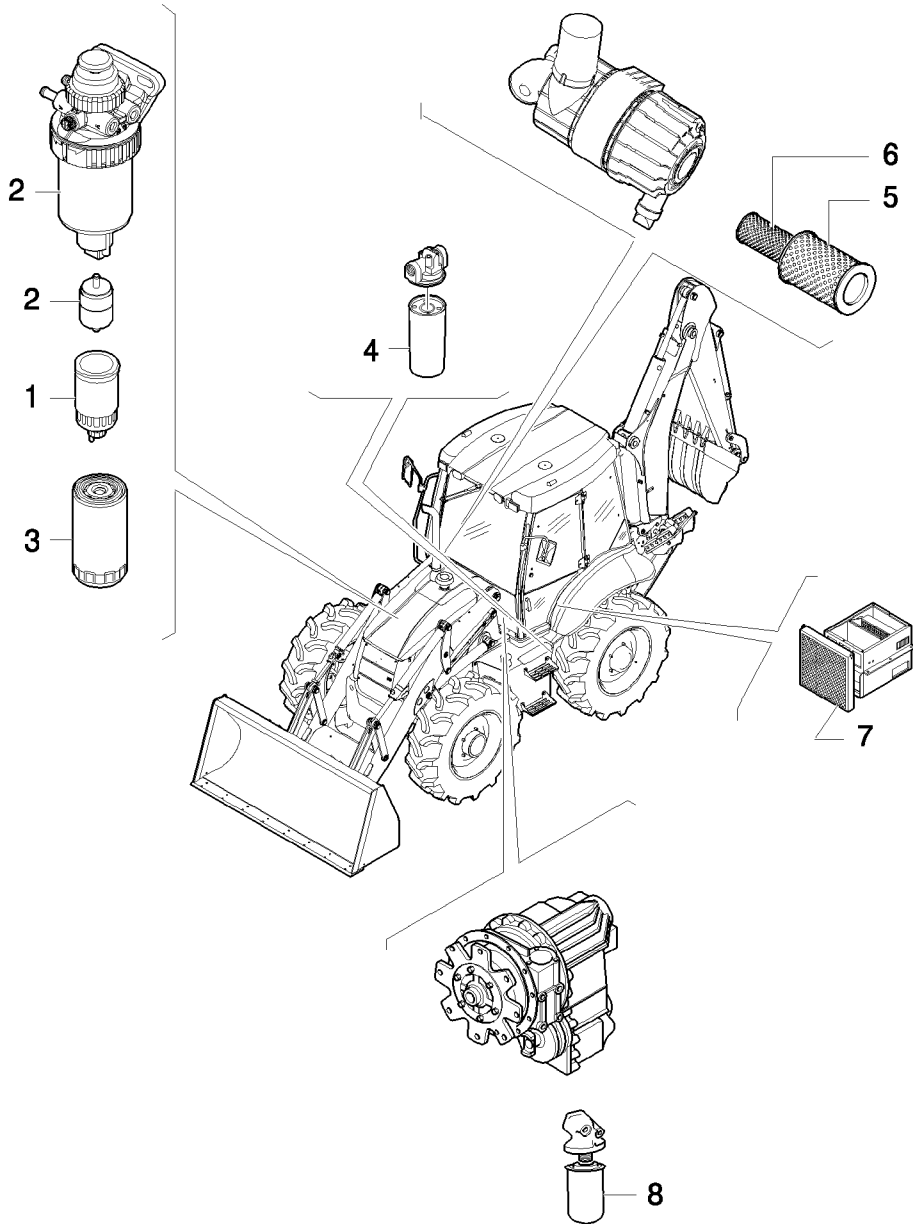
SECTIONS

REF	FN	PART NUMBER	YR/SN	QTY	DESCRIPTION
-----	----	-------------	-------	-----	-------------

--	--	--	--	--	--

					B95B
--	--	--	--	--	------

MAINTENANCE PARTS

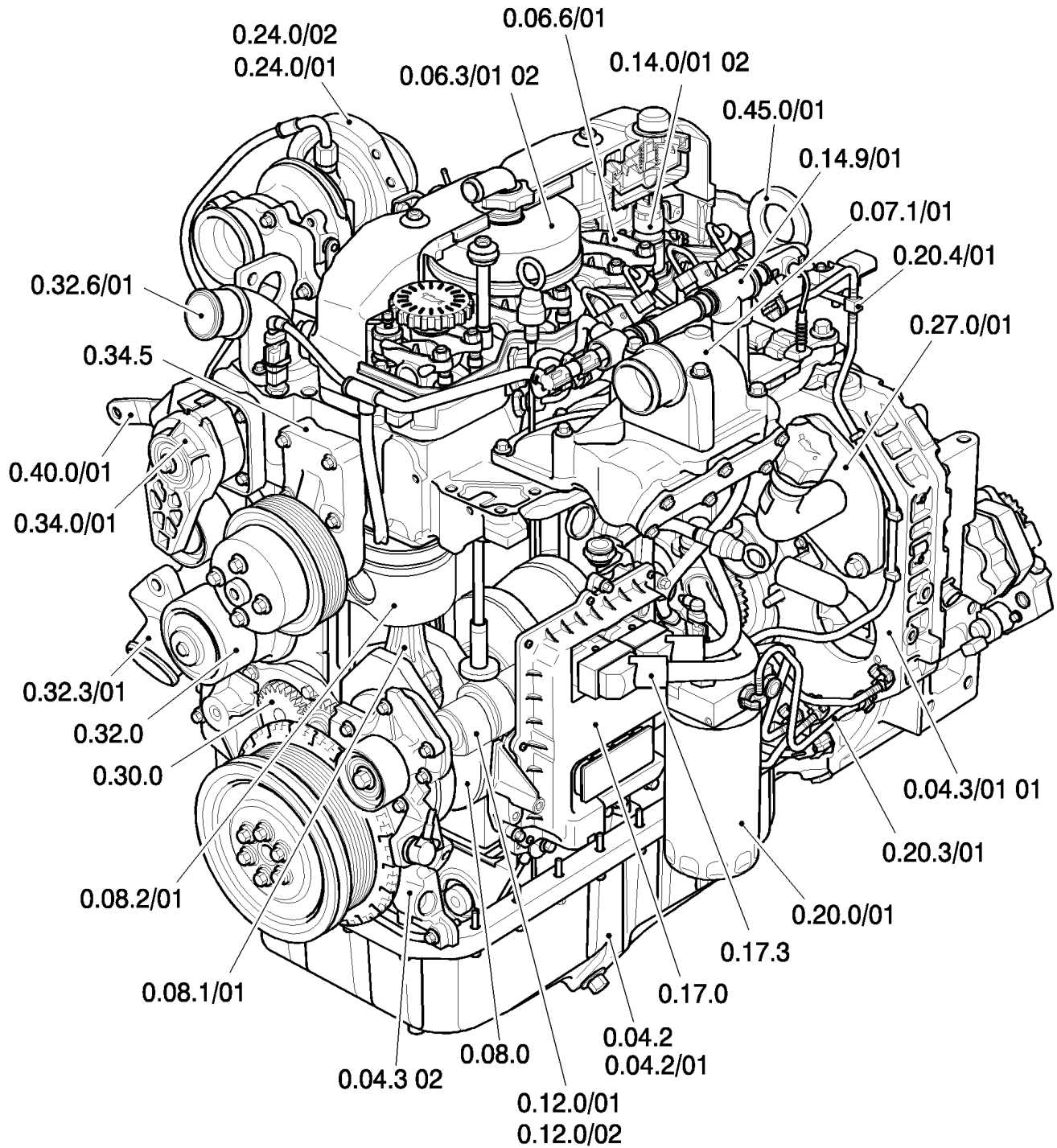


MAINTENANCE PARTS

REF	FN	PART NUMBER	YR/SN	QTY	DESCRIPTION
1		87803197		1	FILTER, FUEL
1		87803192		1	FILTER, FUEL
2		87803444		1	FILTER, FUEL
2		D139225		1	FILTER, FUEL
3		87803260		1	FILTER, ENGINE OIL
4		86989733		1	FILTER, HYDRAULIC OIL
5		87631623		1	FILTER, AIR
6		87631625		1	FILTER, AIR
7		87314367		1	FILTER, CAB
8		85817004		1	FILTER
8		85826020		1	FILTER, HYDRAULIC OIL

B95B

ENGINE



SEC. 01

03

p1

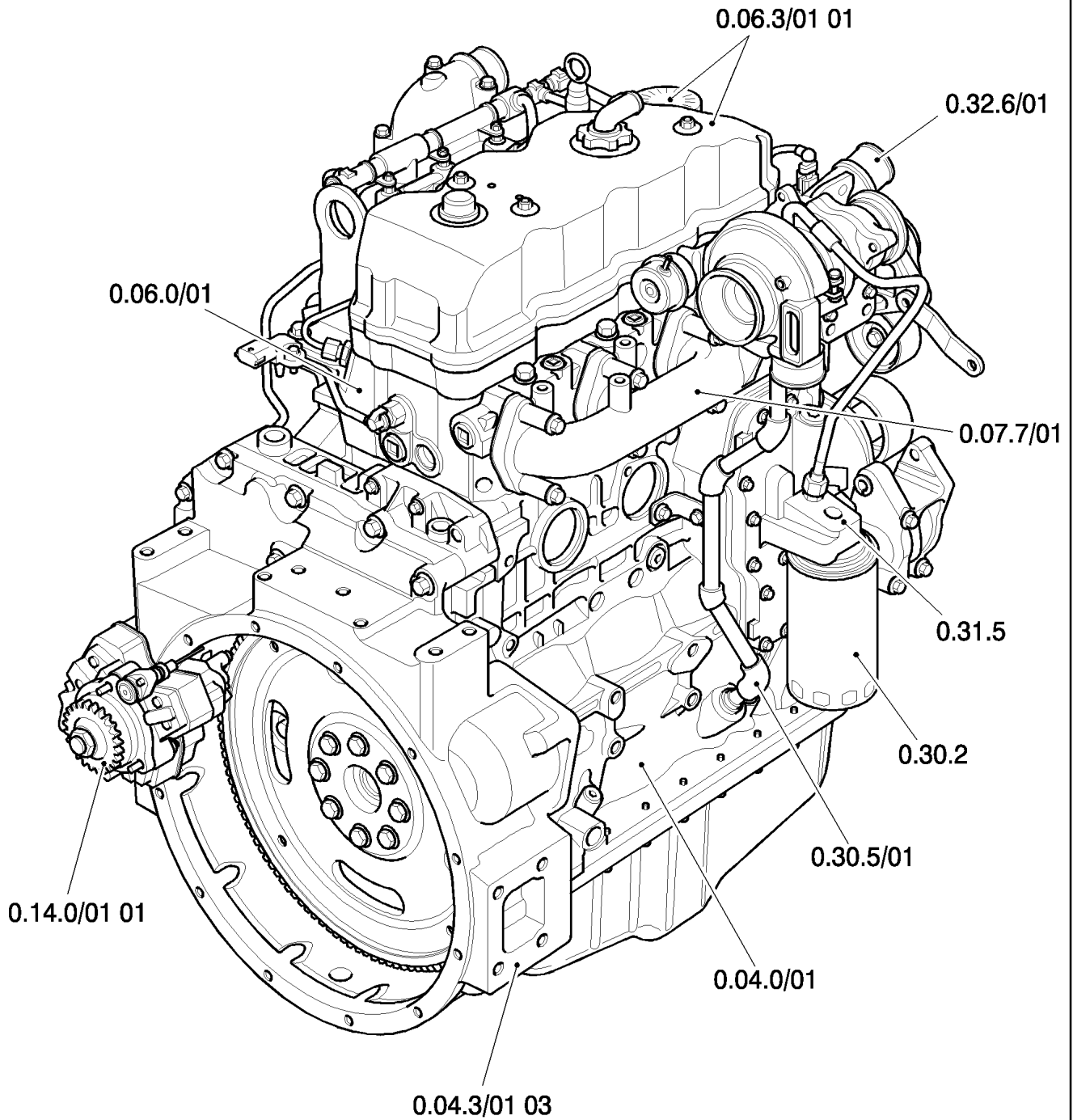
05/08

ENGINE

REF	FN	PART NUMBER	YR/SN	QTY	DESCRIPTION
-----	----	-------------	-------	-----	-------------

					B95B
--	--	--	--	--	------

ENGINE



SEC. 01

04

p1

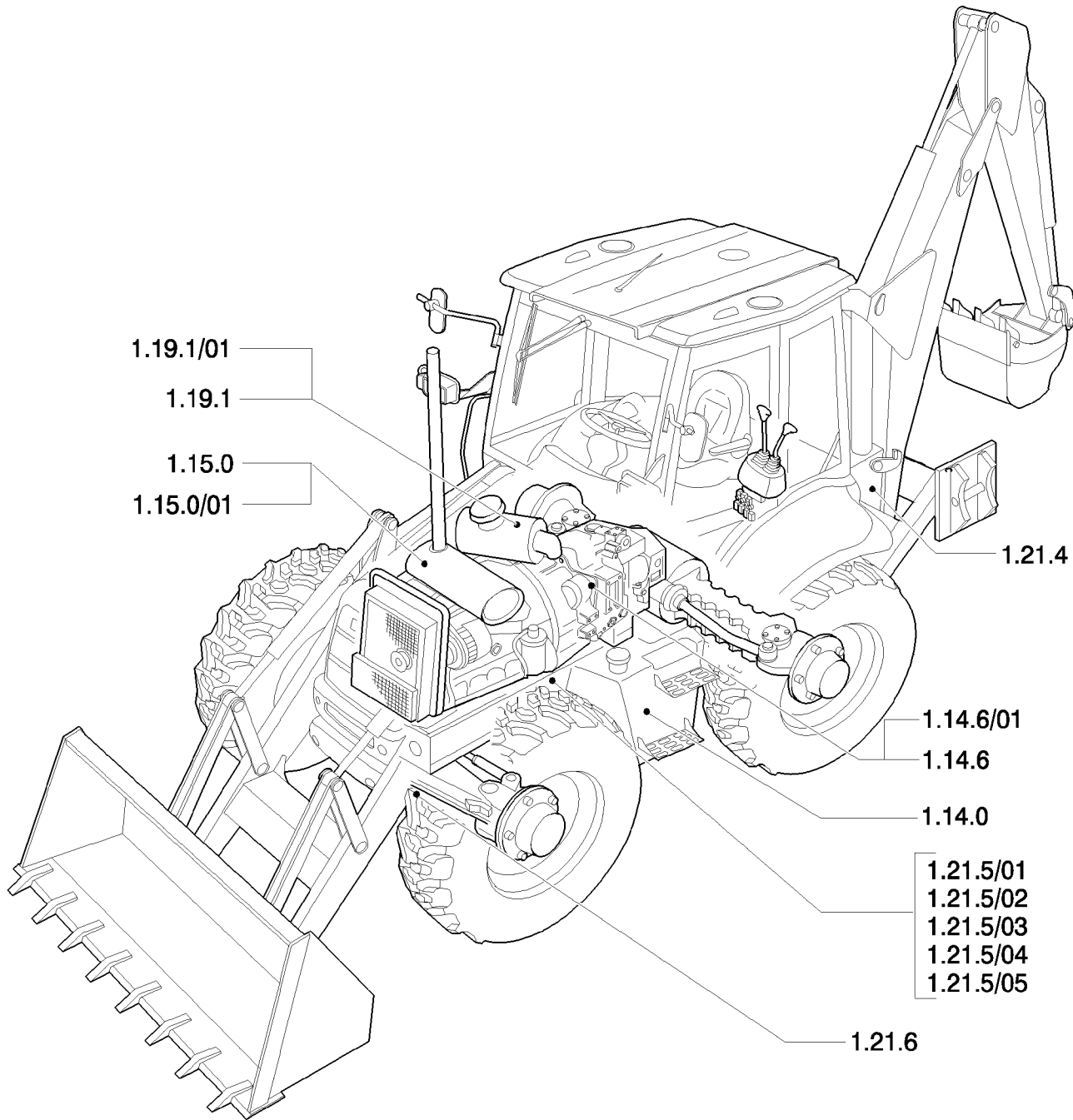
05/08

ENGINE

REF	FN	PART NUMBER	YR/SN	QTY	DESCRIPTION
-----	----	-------------	-------	-----	-------------

					B95B
--	--	--	--	--	------

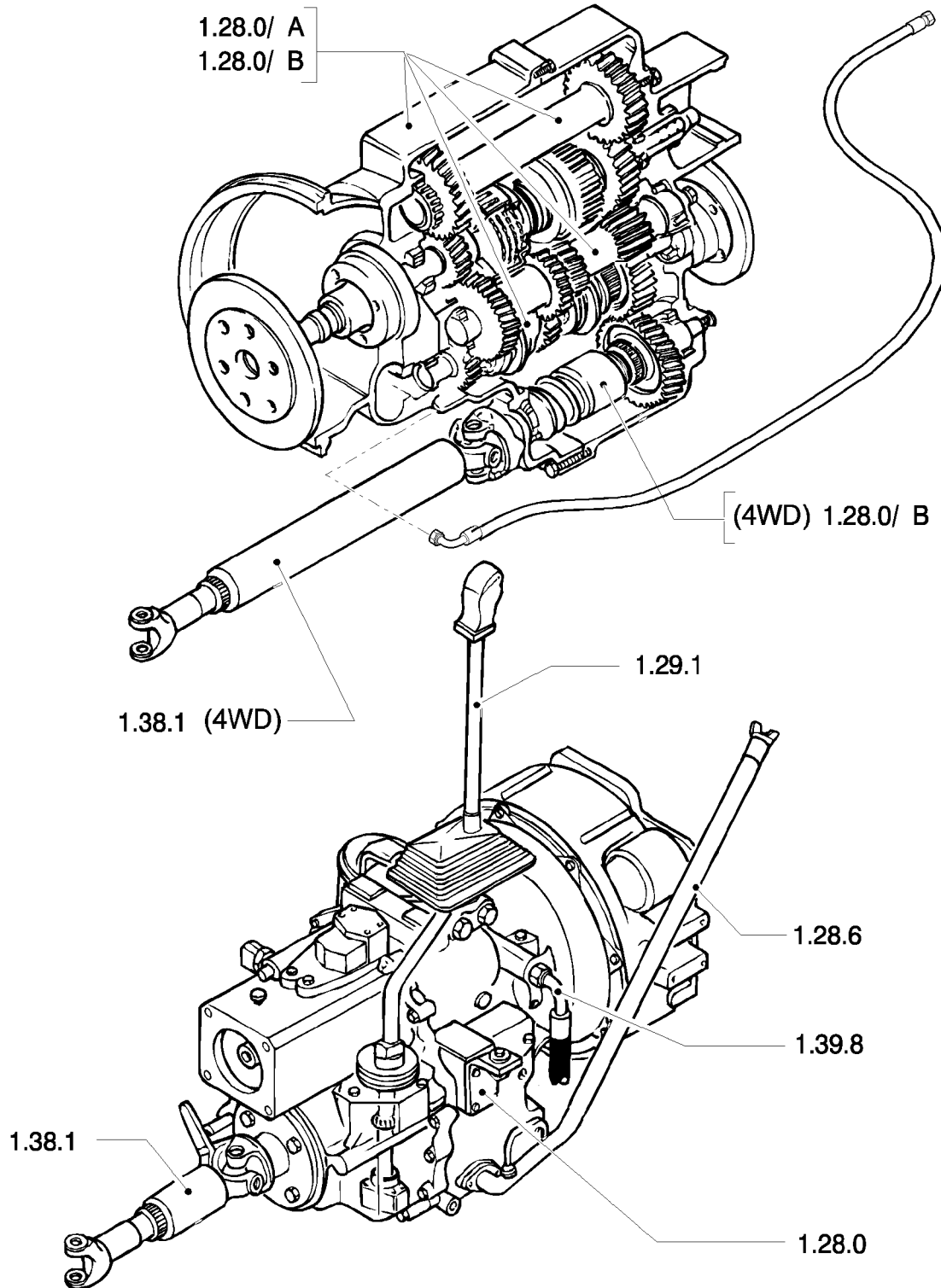
FUEL TANK - MUFFLER - RADIATOR - AIR CLEANER - CHASSIS



SEC. 02		p1	03/08
---------	--	----	-------

FUEL TANK - MUFFLER - RADIATOR - AIR CLEANER - CHASSIS					
REF	FN	PART NUMBER	YR/SN	QTY	DESCRIPTION
					B95B

TRANSMISSION



SEC. 03

01

p1

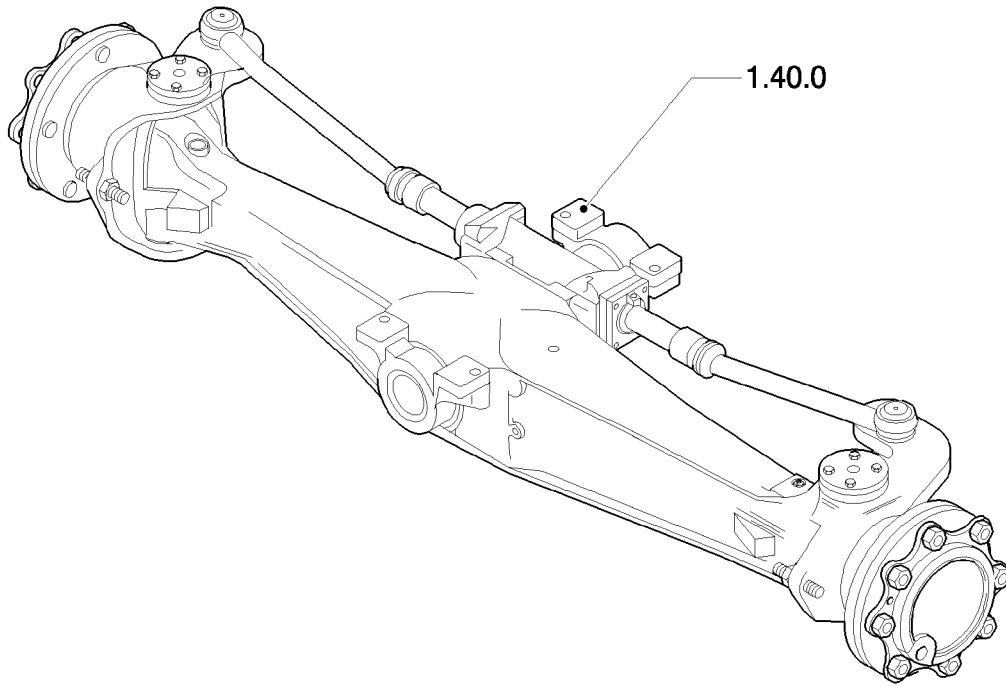
03/08

TRANSMISSION

REF	FN	PART NUMBER	YR/SN	QTY	DESCRIPTION
-----	----	-------------	-------	-----	-------------

					B95B
--	--	--	--	--	------

FRONT AXLE



SEC. 04

p1

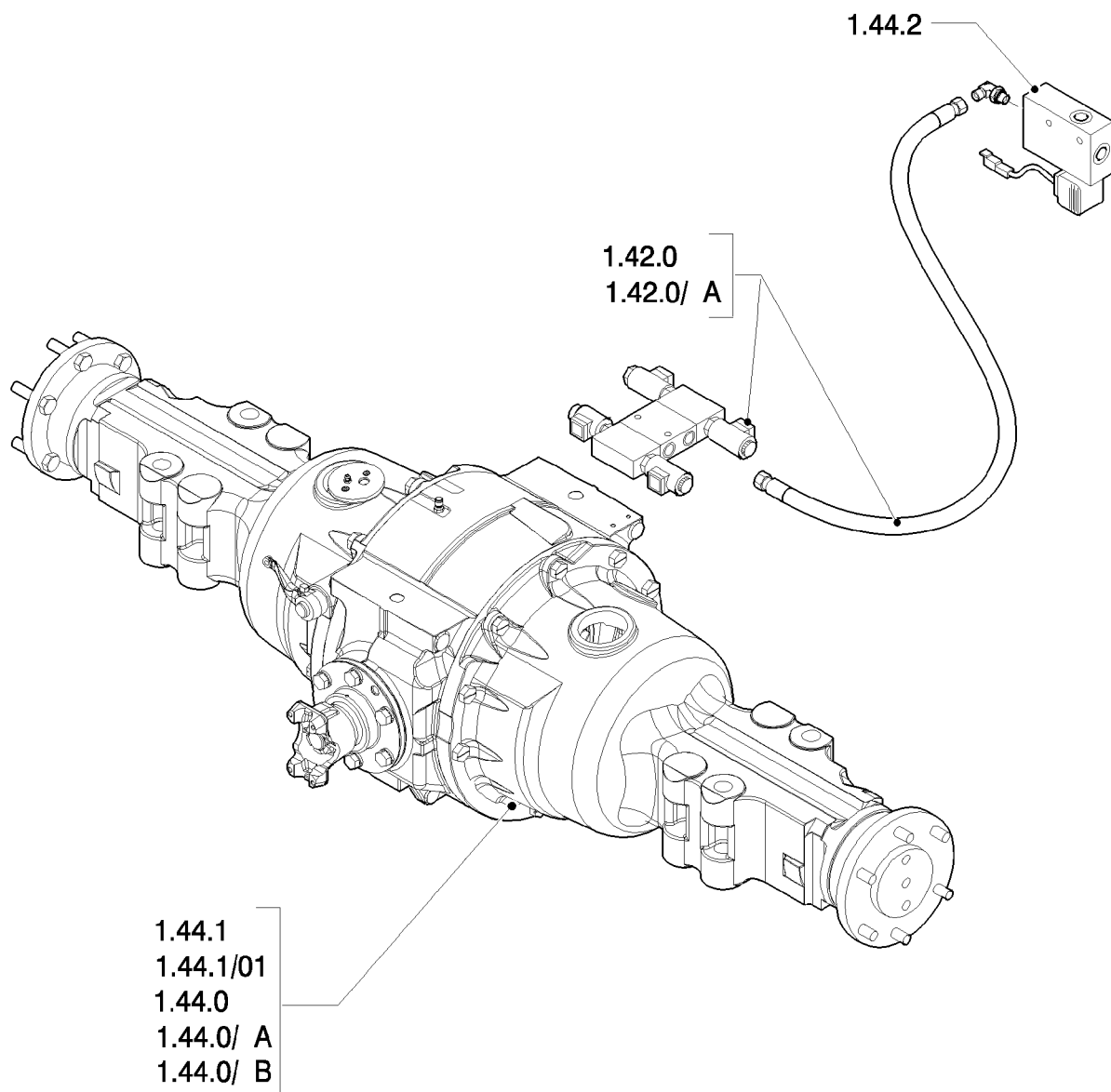
03/08

FRONT AXLE

REF	FN	PART NUMBER	YR/SN	QTY	DESCRIPTION
-----	----	-------------	-------	-----	-------------

					B95B
--	--	--	--	--	------

REAR AXLE

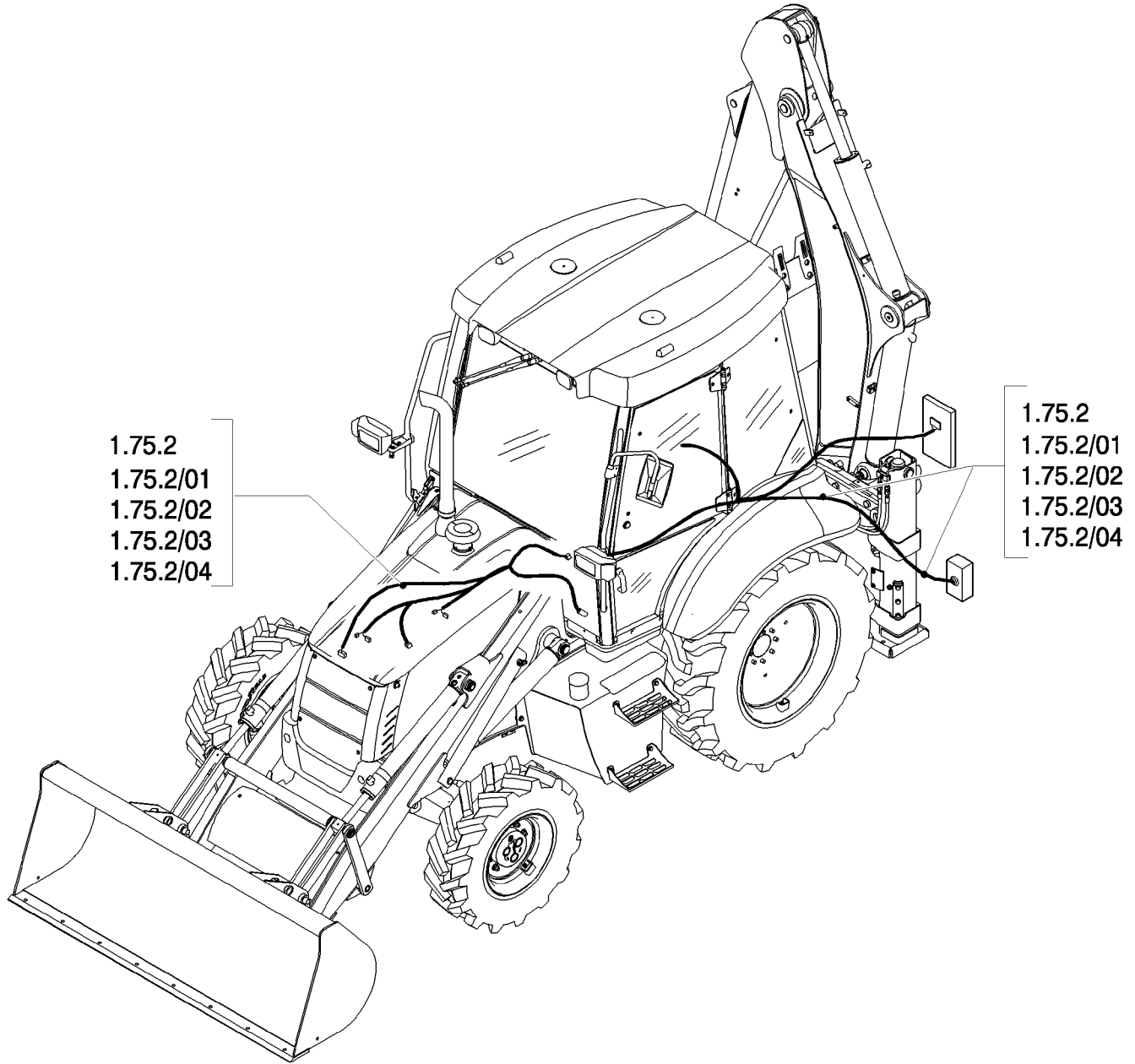


REAR AXLE

REF	FN	PART NUMBER	YR/SN	QTY	DESCRIPTION
-----	----	-------------	-------	-----	-------------

					B95B
--	--	--	--	--	------

ELECTRICAL

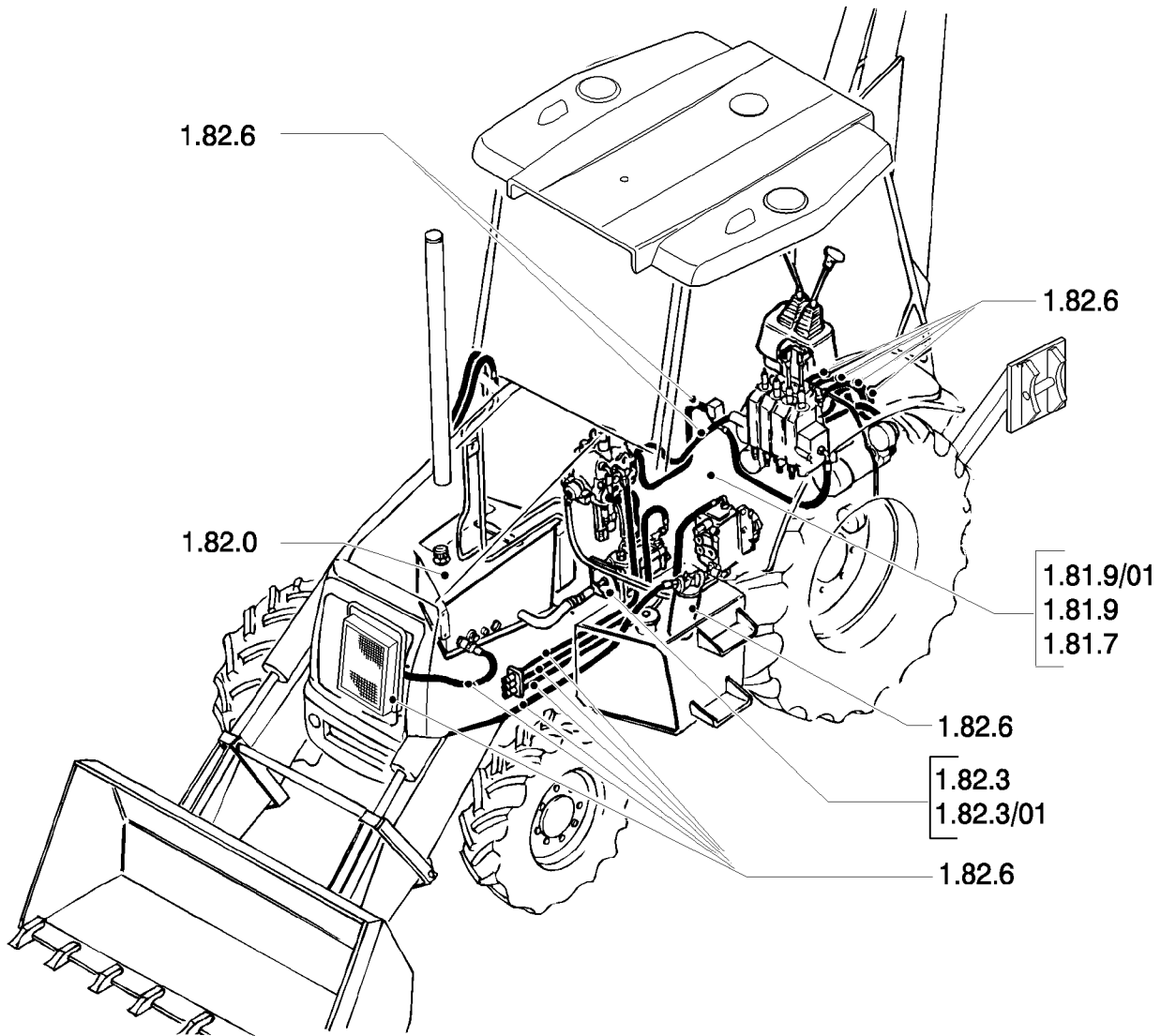


ELECTRICAL

REF	FN	PART NUMBER	YR/SN	QTY	DESCRIPTION
-----	----	-------------	-------	-----	-------------

					B95B
--	--	--	--	--	------

SLIDES VALVES

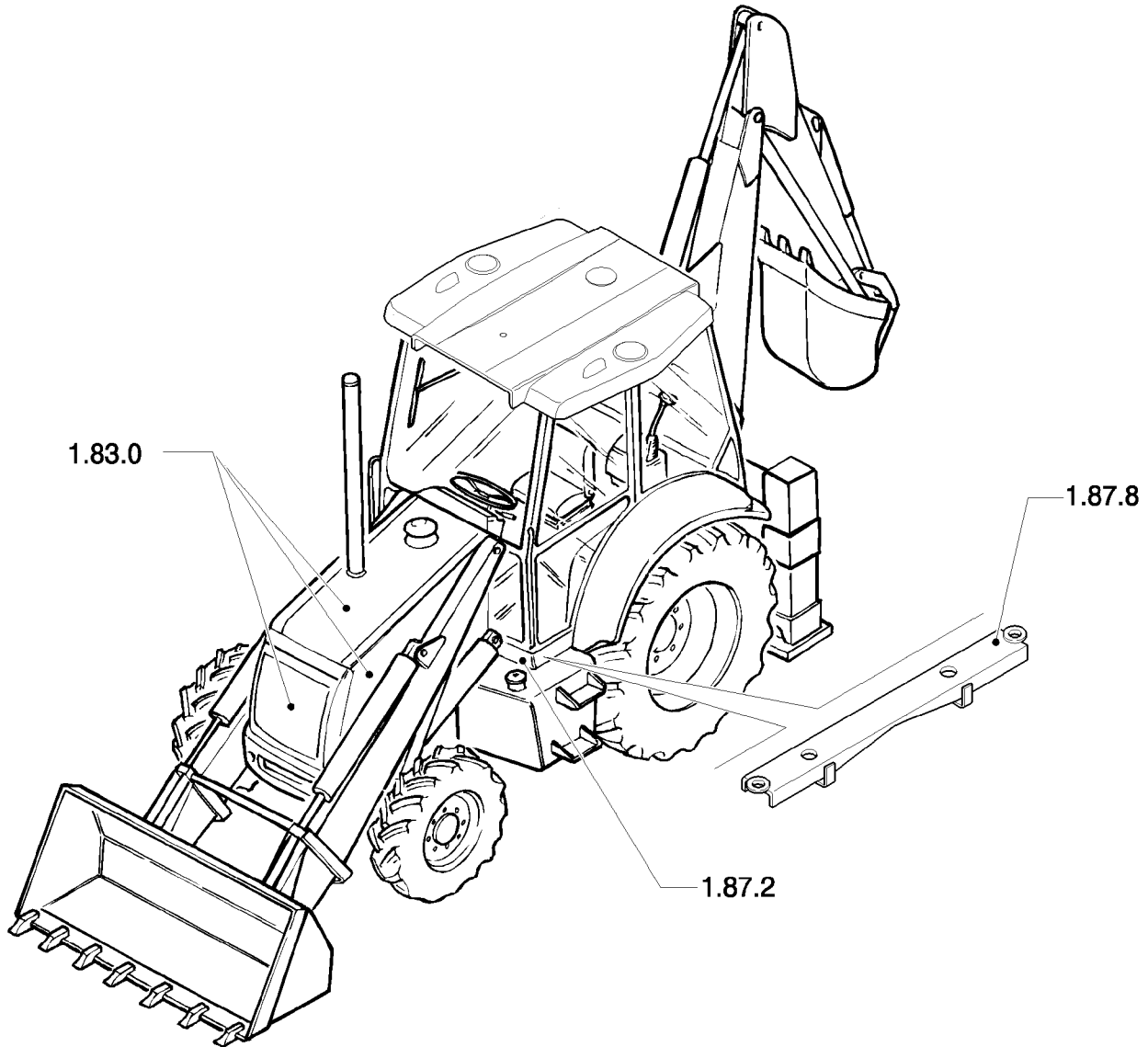


SLIDES VALVES

REF	FN	PART NUMBER	YR/SN	QTY	DESCRIPTION
-----	----	-------------	-------	-----	-------------

					B95B
--	--	--	--	--	------

BODY & HOOD

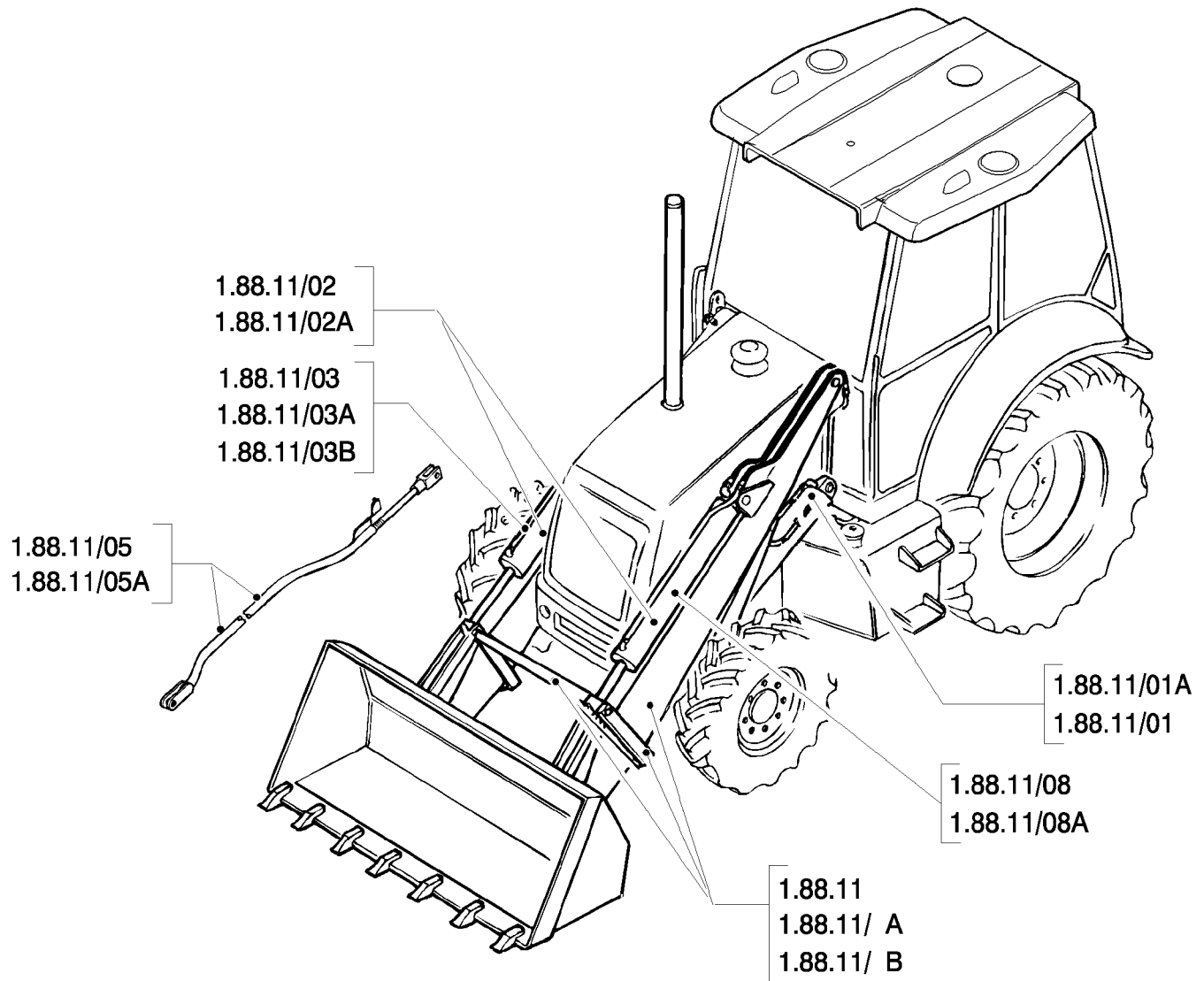


BODY & HOOD

REF	FN	PART NUMBER	YR/SN	QTY	DESCRIPTION
-----	----	-------------	-------	-----	-------------

					B95B
--	--	--	--	--	------

LOADER



SEC. 09

01

p1

03/08

LOADER

REF	FN	PART NUMBER	YR/SN	QTY	DESCRIPTION
-----	----	-------------	-------	-----	-------------

	B95B
--	------

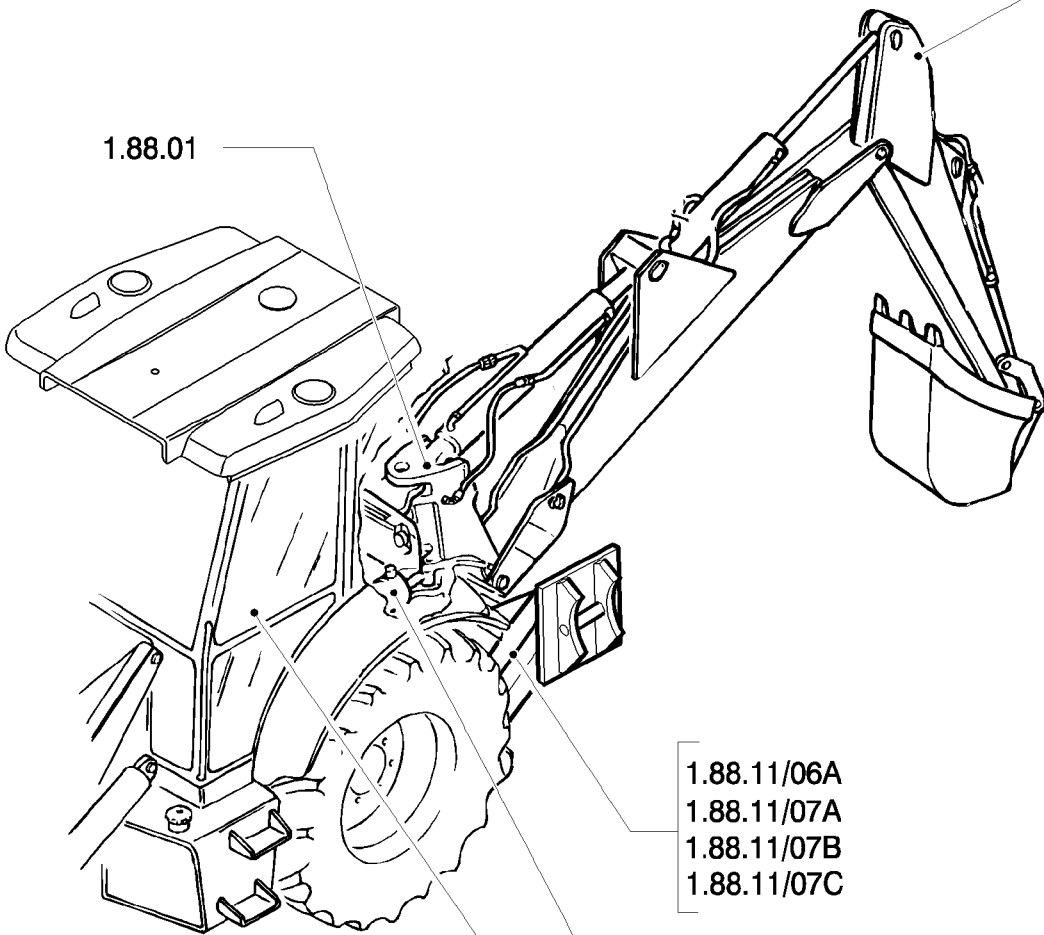
BACKHOE



CENTER PIVOT

SEC.18

1.88.01



- 1.88.11/06A
- 1.88.11/07A
- 1.88.11/07B
- 1.88.11/07C

1.88.11/09A

- 1.88.12/03
- 1.88.12/03A
- 1.89.9/01

SEC. 09

03

p1

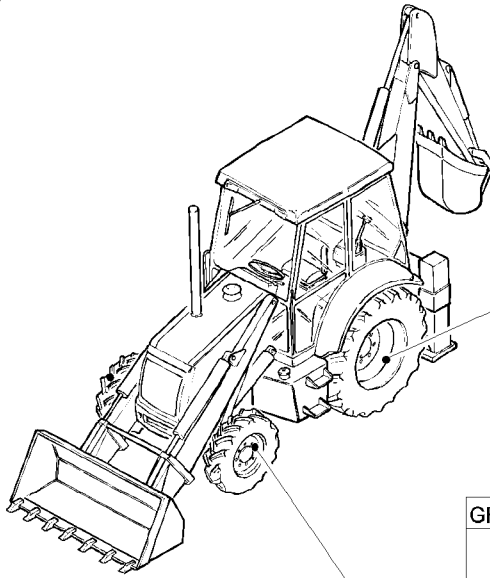
03/08

BACKHOE

REF	FN	PART NUMBER	YR/SN	QTY	DESCRIPTION
-----	----	-------------	-------	-----	-------------

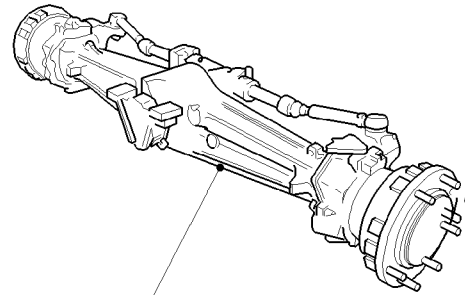
					B95B
--	--	--	--	--	------

WHEELS

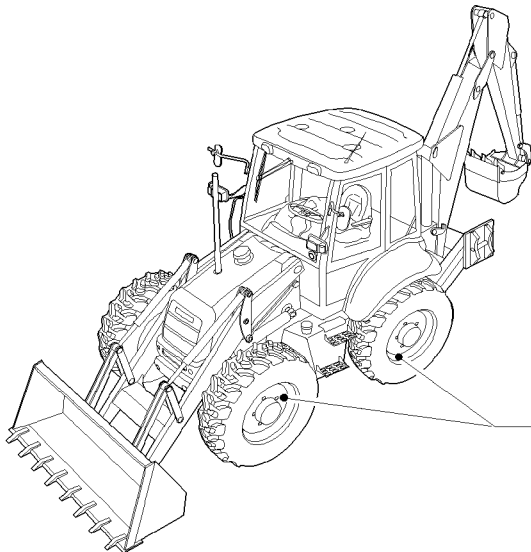


GROUP	EQUIP	TIRE SIZE	RIM
83.00	83.52	16.9 - 28 R4-10PLY TITAN	W15LX 28
	83.62	16.9 - 28 R4 - 12PR	W14LX 28
	83.64	16.9 - 24 R4 - 10PR	W15LX 24
	83.65	17.5 - L24 R4 - 10PR	W15LX 24
	83.91	19.5 - 24 R4 - 10PR	W16LX 24
	83.92	18.4 - 26 R4 - 12PR	DW16L X26
	83.92	21L24 R4 - 10PR	W18L X24
	83.93	18.4 - 26 R1 - 12PR	DW16L X26
	83.93	19.5 x 24 "JUMBO HULK"	W16L X24
	83.96	480/80 R26 IT520	DW16LX26
	83.97	16.9 - 28	W14L X28Z
	83.98	18.4 - 26	DW16L X26

GROUP	EQUIP	TIRE SIZE	RIM
82.00	82.75	14 -17.5NHS - 8PR	10.5 X 17.5
	82.76	12 -16.5NHS -8PR	9,75 X 16,5
	82.76	12 - 16.3 HULK	9,75 X 16,5
	82.76	12 - 16.5 HULK	9,75 X 16,5
	82.78	10.5/80 -18I3 - 10PR	9 X 18
	82.79	12.5/80 -18I3 - 10PR	9 X 18
	82.80	12.5/80 -18I3 - 10PR	9 X 18
	82.87	320/80-R18-IT520	9 X 18
	82.89	12.5 - 18	9 X 18



GROUP	EQUIP	TIRE SIZE	RIM
81.00	81.38	11L - 16SLF3 - 10PR	W8LX 16



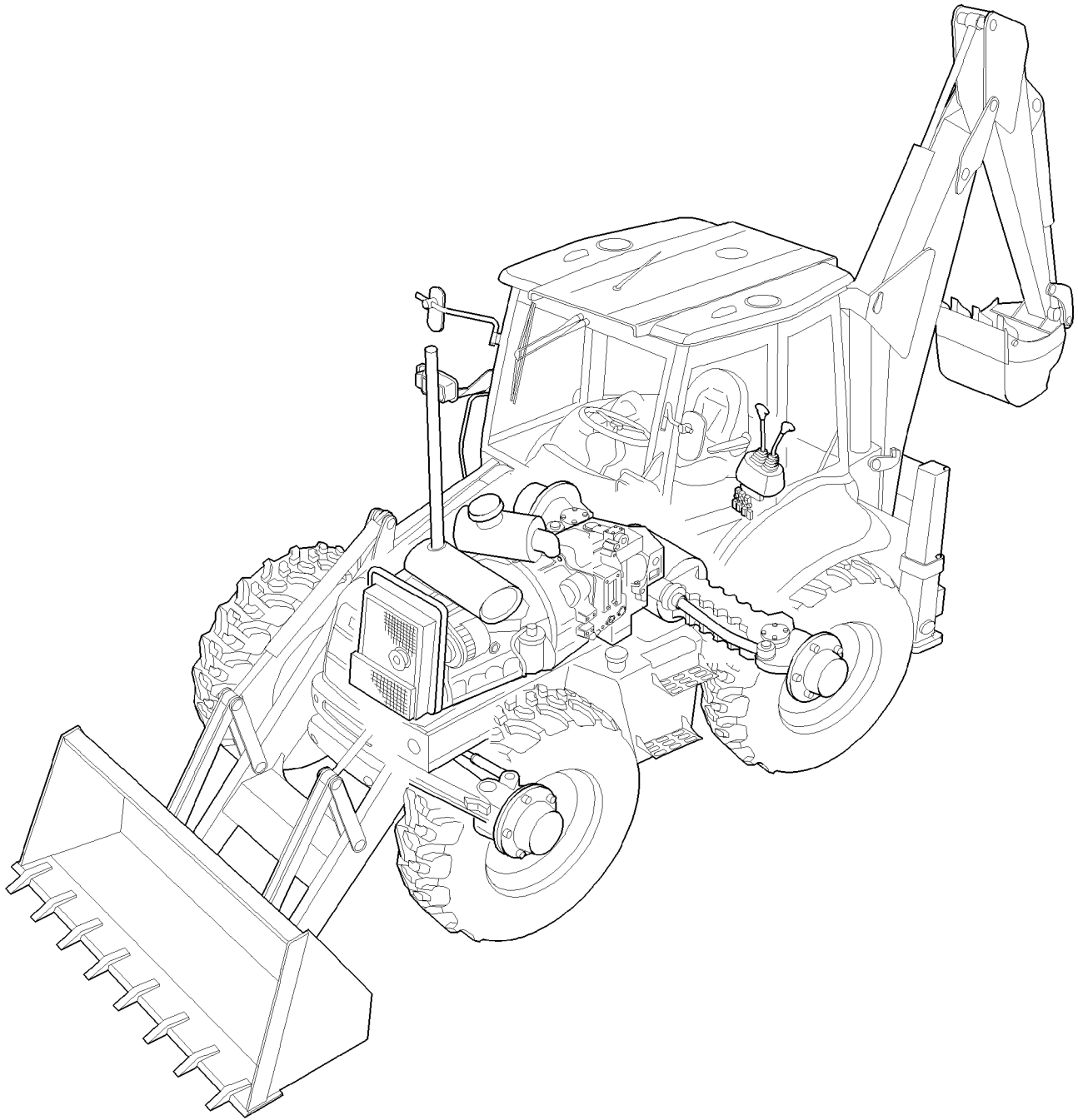
GROUP	EQUIP	TIRE SIZE	RIM
85.00	85.64	16.9 - 24 R4 - 12PR	W14LX 24
	85.64	16.9 - 24 R4 - 12PR (I.S.G.)	W15LX 24
	85.65	16.9 - 28 R4 - 12PR	W15LX 28
	85.65	16.9 - 28 R4 12PLY GY (I.S.G.T.)	W14LX 28
	85.66	440/80 R28 156A8 IT530	W14LX 28
	85.67	440/80 R28 156A8 IT520	W14LX 28

WHEELS

REF	FN	PART NUMBER	YR/SN	QTY	DESCRIPTION
-----	----	-------------	-------	-----	-------------

					B95B
--	--	--	--	--	------

VARIATION



VARIATION

REF	FN	PART NUMBER	YR/SN	QTY	DESCRIPTION
-----	----	-------------	-------	-----	-------------

					B95B
--	--	--	--	--	------

0.0040/01

01

p1

03/08

OPTIONAL EQUIPMENT - NA

VARIANT CODE	DESCRIPTION	APPLICATION					
		B90B	B95B	B95BLR	B95BTC	B110B	B115B
095	Stabilizer control without auto-up (CENTER PIVOT)	●	●	●	●	●	●
096	Stabilizer control with auto-up (CENTER PIVOT)	●	●	●	●	●	●
130	Approval for Europe	●	●	●	●	●	●
131 - 131/01	Single Battery	●	●	●	●	●	●
141	Approval for France	●	●	●	●	●	●
142	Approval for Russia	●	●	●	●	●	●
175	Air intake cap & pre-cleaner	●	●	●	●	●	●
176	Air intake cap & pre-cleaner	●	●	●	●	●	●
201	Shovel and rear lifting hooks	●	●	●	●	●	●
207	Rear counterweight	●	●	●	●	●	●
284	Rear mirror (CAB)	●	●	●	●	●	●
290 - 291	Front counterweight	●	●	●	●	●	●
293	Backhoe control valve, 6 sections (CENTER PIVOT)	●	●	●	●	●	●
300	Two-section control valve for loader	●	●	●	●	●	●
302	Double battery	●	●	●	●	●	●
321 - 321/01	Tower assy 6 sections (CENTER PIVOT)	●	●	●	●	●	●
331	Proportional control valve 6 sections	●	●	●	●	●	●
331/ A	Backhoe control valve, 6 sections (CENTER PIVOT)	●	●	●	●	●	●
331/ B	Pilot valve of hydraulic control lever (RIGHT HAND - LEFT HAND)	●	●	●	●	●	●
331/ C	Tower assy 7 sections (CENTER PIVOT)	●	●	●	●	●	●
333	7-sections excavator control valve (CENTER PIVOT)	●	●	●	●	●	●
333/01B	Proportional control valve 7 sections	●	●	●	●	●	●
333/ A	Pilot valve of hydraulic control lever (RIGHT HANDS) 7 spools	●	●	●	●	●	●
333/ C	Tower assy 7 sections (CENTER PIVOT)	●	●	●	●	●	●
335	Lock valve on loader cylinders	●	●	●	●	●	●
337	Lock valve on loader lift cylinders	●	●	●	●	●	●
338	Lock valve on bucket cylinder	●	●	●	●	●	●
339	Proportional valve 4 operations	●	●	●	●	●	●
341/ A	Valve with viscous joint	●	●	●	●	●	●
342	Stabilizer control valve, two sections (CENTER PIVOT)	●	●	●	●	●	●
344	A/C housing & filters	●	●	●	●	●	●
346	Housing & filters	●	●	●	●	●	●
347	2 lever backhoe controls	●	●	●	●	●	●
350	JCB 2 lever backhoe controls	●	●	●	●	●	●
351	ISO 2 lever backhoe controls	●	●	●	●	●	●
358	Backhoe bucket 12" (305MM) HD with thorned tines	●	●	●	●	●	●
386	Backhoe bucket 18" (457MM) HD with thorned tines	●	●	●	●	●	●
387	Backhoe bucket 24" (610MM) HD with thorned tines	●	●	●	●	●	●
388	Backhoe bucket 30" (762MM) HD with thorned tines	●	●	●	●	●	●
389	Loader control valve, two section, lever & decal	●	●	●	●	●	●
390	Backhoe bucket 36" (910MM) HD with thorned tines	●	●	●	●	●	●
390/01	Lock valve for bucket 4X1 / 6X1	●	●	●	●	●	●
391	Locking valve on backhoe lift and dipp. Cylinder	●	●	●	●	●	●
392	2 lever backhoe controls, lever, boot & decals	●	●	●	●	●	●
393	4 lever backhoe controls, console, levers & bellcrank (CENTER PIVOT - SIDE SHIFT)	●	●	●	●	●	●
394	ISO 2 lever backhoe controls, lever, boot & decals (CENTER PIVOT)	●	●	●	●	●	●
394/01	Suspended load handling on machine side	●	●	●	●	●	●
397	Lock valve on loader boom cylinder and backhoe dipper cylinder	●	●	●	●	●	●
398	Front axle (4WS) - box	●	●	●	●	●	●
400	Rear axle, RH & center housing (4WS)	●	●	●	●	●	●
401	4WD front axle. Housing, bushing & support	●	●	●	●	●	●
402	Front axle - (4WD) w/gear, bevel	●	●	●	●	●	●
415	System hammer components (CAB - ROPS)	●	●	●	●	●	●
416	1 M3 standard bucket	●	●	●	●	●	●
431 - 432	Bucket 4X1 with blade	●	●	●	●	●	●
433	Bucket 4X1 with tines	●	●	●	●	●	●
434	Glide ride valve, hydraulic system for machine frame levelling	●	●	●	●	●	●
437	Bucket 6X1 (1,15 M3) with blade "COMMON GRAY"	●	●	●	●	●	●
469	Bucket 6X1 (1 M3) with blade "COMMON GRAY"	●	●	●	●	●	●
470	Bucket 4X1 (1 M3) with blade "COMMON GRAY"	●	●	●	●	●	●
471	Hydraulic cylinder (BUCKET 4X1 - 6X1)	●	●	●	●	●	●
471/01	Bucket 4X1 (1 M3) with blade "COMMON GRAY"	●	●	●	●	●	●
471/02	Bucket 4X1 (1 M3) with tines "COMMON GRAY"	●	●	●	●	●	●
472 - 472/01	Bucket 4X1 (1 M3) with blade "COMMON GRAY"	●	●	●	●	●	●
473	Bucket 6X1 (1 M3) with blade "COMMON GRAY"	●	●	●	●	●	●

0.0040/01

01

p1

03/08

OPTIONAL EQUIPMENT - NA

REF	FN	PART NUMBER	YR/SN	QTY	DESCRIPTION
-----	----	-------------	-------	-----	-------------

					B95B
--	--	--	--	--	------

0.0040/01

02

p1

03/08

OPTIONAL EQUIPMENT - NA

VARIANT CODE	DESCRIPTION	APPLICATION					
		B90B	B95B	B95BLR	B95BTC	B110B	B115B
474	Bucket 6X1 (1 M3) with tines "COMMON GRAY"	●	●	●		●	●
475	Bucket 4X1 (1,15 M3) with blade "COMMON GRAY"	●	●	●		●	●
476	Bucket 4X1 (1,15 M3) with tines "COMMON GRAY"	●	●	●		●	●
487	24" (610MM) backhoe bucket with pin teeth	●	●	●		●	●
500	1,13 M3 bucket	●	●	●		●	●
501	1,13 M3 bucket w/tines	●	●	●		●	●
502	1,13 M3 bucket with extra reversible blade	●	●	●		●	●
515/01	12" (350MM) backhoe bucket with pin teeth	●	●	●		●	●
516/01	18" (457MM) backhoe bucket with pin teeth	●	●	●		●	●
517/01	24" (610MM) backhoe bucket with pin teeth	●	●	●		●	●
518/01	30" (762MM) backhoe bucket with pin teeth	●	●	●		●	●
519/01	36" (914MM) backhoe bucket with pin teeth	●	●	●		●	●
520	0.88 M3 bucket without tines	●	●	●		●	●
520/01	18" (457MM) backhoe bucket with pin teeth (EXTRA HD)	●	●	●		●	●
521	Pin tooth kit, 24" (610MM) backhoe buckets (EXTRA HD)	●	●	●		●	●
522	1,13 M3 bucket	●	●	●		●	●
522/01	Standard 1MC bucket with forks	●	●	●		●	●
522/02	1 M3 bucket with cutter	●	●	●	●	●	●
525	Standard 1MC bucket with forks and reversible blade	●	●	●		●	●
527	0.88 M3 bucket and extra reversible blade	●	●	●		●	●
533	1,15 M3 bucket with forks and cutter blade	●	●	●		●	●
534	1,15 M3 bucket with forks and extra reversible blade	●	●	●		●	●
535	Stabilizer foot ground (CENTER PIVOT)	●	●	●		●	●
536	Standard 1MC bucket with tines	●	●	●		●	●
536/01	1 M3 bucket with tines and cutter	●	●	●	●	●	●
536/02	Reversible stabilizer leg (CENTER PIVOT)	●	●	●		●	●
537	Standard 1MC bucket with extra reversible blade	●	●	●		●	●
537/01	1 M3 bucket with additional reversible blade	●	●	●		●	●
548	Ditch cleaning bucket	●	●	●		●	●
622	Internal fan	●	●	●		●	●
636 - 637	Radiator	●	●	●		●	●
638 - 639	Radiator	●	●	●		●	●
642	Egs control, 20 & 40km/h (POWER SHIFT)	●	●	●		●	●
646	Machine part air conditioning set	●	●	●		●	●
650	Steering column, fixed & adjustable	●	●	●		●	●
698	Glide ride valve, hydraulic system for machine frame levelling & ON/OFF switch	●	●	●		●	●
699	Hand hammer switch	●	●	●		●	●
700	4X1 & 6X1 bucket hydraulic lines (POWER SHIFT, POWER SHUTTLE)	●	●	●		●	●
700/01	4X1 & 6X1 bucket hydraulic lines (4WS)	●	●	●		●	●
700/02	4X1 & 6X1 bucket hydraulic lines	●	●	●		●	●
703	Pedal-operated telescopic dipper hydraulic system (7 SECTION)	●	●	●		●	●
721	Telescopic control valve, 3 sections (CENTER PIVOT)	●	●	●		●	●
724/01	Hydraulic system for hammer (CENTER PIVOT)	●	●	●		●	●
724/02	Hydraulic system for hammer (CENTER PIVOT)	●	●	●		●	●
724/ A	Rear hammer control valve	●	●	●		●	●
725	Hammer kit from lifting arm to demolition arm	●	●	●		●	●
725/01	4X1 & 6X1 bucket hydraulic lines (POWER SHUTTLE)	●	●	●		●	●
725/02	4X1 & 6X1 bucket hydraulic lines (POWER SHIFT)	●	●	●		●	●
725/03	4X1 & 6X1 bucket hydraulic lines (POWER SHUTTLE)	●	●	●		●	●
727	Hydraulic system presetting for telescopic links pedal operated	●	●	●		●	●
727/01	Hydraulic system prearrangement (CENTER PIVOT)	●	●	●		●	●
728	Manual hammer system	●	●	●		●	●
733	Rear mechanical quick-coupling	●	●	●		●	●
734	Front mechanical quick-coupling	●	●	●		●	●
758	Rotating beacon	●	●	●		●	●
787	Front console without speedometer (POWER SHUTTLE, ROPS)	●	●	●		●	●
787/01	Front console without speedometer (POWER SHUTTLE, CAB)	●	●	●		●	●
788	Front console with speedometer (ROPS)	●	●	●		●	●
788/01	Front console with speedometer (CAB)	●	●	●		●	●
789	Speed sensor (POWER SHUTTLE)	●	●	●		●	●
793	Front working light (CAB)	●	●	●		●	●
793/01	Front working light (ROPS)	●	●	●		●	●
794	Lamps & lights (CAB)	●	●	●		●	●
794/01	Lamps & lights (ROPS)	●	●	●		●	●
796	Anti theft	●	●	●		●	●

0.0040/01

02

p1

03/08

OPTIONAL EQUIPMENT - NA

REF	FN	PART NUMBER	YR/SN	QTY	DESCRIPTION
-----	----	-------------	-------	-----	-------------

					B95B
--	--	--	--	--	------

0.0040/01

03

p1

03/08

OPTIONAL EQUIPMENT - NA

VARIANT CODE	DESCRIPTION	APPLICATION					
		B90B	B95B	B95BLR	B95BTC	B110B	B115B
803	Fenders, front	●	●	●	●	●	●
851	Cloth seat & attaching hardware - cabine	●	●	●	●	●	●
851/01	Cloth seat cushions, armrests & related parts	●	●	●	●	●	●
853	Rear mudguards and roof (ROPS - CAB)	●	●	●	●	●	●
855	Air ride cloth seat & attaching hardware - cabine	●	●	●	●	●	●
855/01	Air ride cloth seat cushions, armrests & related parts	●	●	●	●	●	●
856	Vinyl seat cushions, armrests & related parts (ROPS)	●	●	●	●	●	●
856/01	Vinyl seat with armrests & mounting hardware (ROPS)	●	●	●	●	●	●
860	Fenders, front	●	●	●	●	●	●
879	Right back view mirror	●	●	●	●	●	●
888	Arm and guard decal	●	●	●	●	●	●
900	Boom - long dipper	●	●	●	●	●	●
901	Telescopic dipper long	●	●	●	●	●	●
902	Short telescopic dipper	●	●	●	●	●	●
987	Forward/Reverse & steering decals - POWER SHIFT	●	●	●	●	●	●
990	Tool kit	●	●	●	●	●	●
992	Cab warning & information decals (POWER SHUTTLE - POWER SHIFT)	●	●	●	●	●	●
993	Plates	●	●	●	●	●	●
995 - 995/01	Cold start	●	●	●	●	●	●
998	Forward/Reverse & steering decals - POWER SHIFT	●	●	●	●	●	●

0.0040/01

03

p1

03/08

OPTIONAL EQUIPMENT - NA

REF	FN	PART NUMBER	YR/SN	QTY	DESCRIPTION
-----	----	-------------	-------	-----	-------------

					B95B
--	--	--	--	--	------

NOTES

SECTION INDEX

Engine

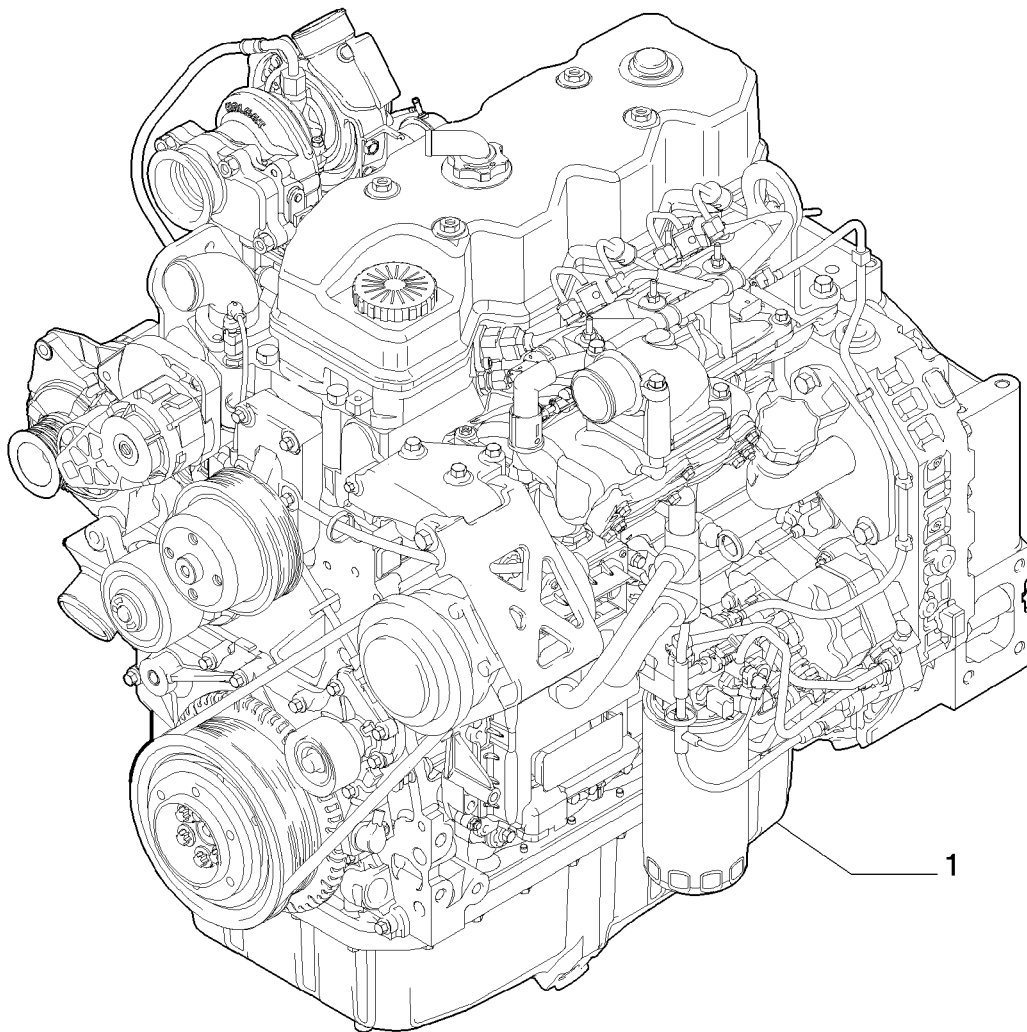
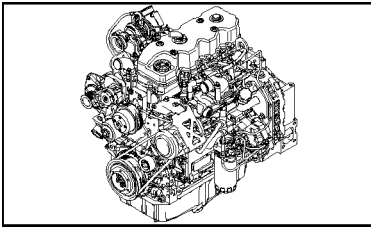
0.02.1/01		ENGINE
0.04.0/01		CRANKCASE
0.04.2		ENGINE OIL SUMP
0.04.3/01	01	CRANKCASE COVERS
0.04.3/01	02	CRANKCASE COVERS
0.04.3/01	03	CRANKCASE COVERS
0.06.0/01		CYLINDER HEAD
0.06.3/01	01	CYLINDER HEAD COVERS
0.06.3/01	02	CYLINDER HEAD COVERS
0.06.6/01		ROCKER SHAFT
0.07.1/01		MANIFOLD - INTAKE
0.07.7/01		EXHAUST MANIFOLD
0.08.0		CRANKSHAFT
0.08.1/01		CONNECTING ROD
0.08.2/01		PISTON - ENGINE
0.08.3		FLYWHEEL - ENGINE
0.08.4		PULLEY - CRANKSHAFT
0.10.5	01	DYNAMIC BALANCER, GEARS & SHAFTS
0.10.5	02	DYNAMIC BALANCER, GEARS & SHAFTS
0.12.0/01		CAMSHAFT - TIMING CONTROL
0.14.0/01	01	INJECTION PUMP
0.14.0/01	02	INJECTION EQUIPMENT - INJECTOR
0.14.0/01A		INJECTION PUMP - COMPONENTS
0.14.9/01		INJECTION EQUIPMENT - PIPING
0.17.0		ELECTRONIC INJECTION
0.17.3		MOTOR ELECTRIC INSTALLATION
0.20.0/01		FUEL FILTER
0.20.3/01		PIPING - FUEL
0.20.4/01		INJECTION EQUIPMENT - PIPING
0.24.0/01		TURBOCHARGER
0.27.0/01		ENGINE OIL DIPSTICK
0.30.0		OIL PUMP - ENGINE
0.30.2		OIL FILTERS - ENGINE
0.30.5/01		PIPING - ENGINE OIL
0.31.5/01		HEAT EXCHANGER - ENGINE
0.32.0		WATER PUMP
0.32.3/01		COOLING SYSTEM - ENGINE
0.32.6/01		THERMOSTAT - ENGINE COOLING SYSTEM
0.34.0/01		WATER PUMP - CONTROL
0.34.5		FAN DRIVE
0.36.0		ACCESSORY ENGINE
0.40.0/01		ALTERNATOR
0.45.0/01		HOOKS - ENGINE

0.02.1/01

p1

03/08

ENGINE



0.02.1/01

p1

03/08

ENGINE

REF	FN	PART NUMBER	YR/SN	QTY	DESCRIPTION
------------	-----------	--------------------	--------------	------------	--------------------

1		87587692		1	ENGINE, - ASSY
---	--	----------	--	---	----------------

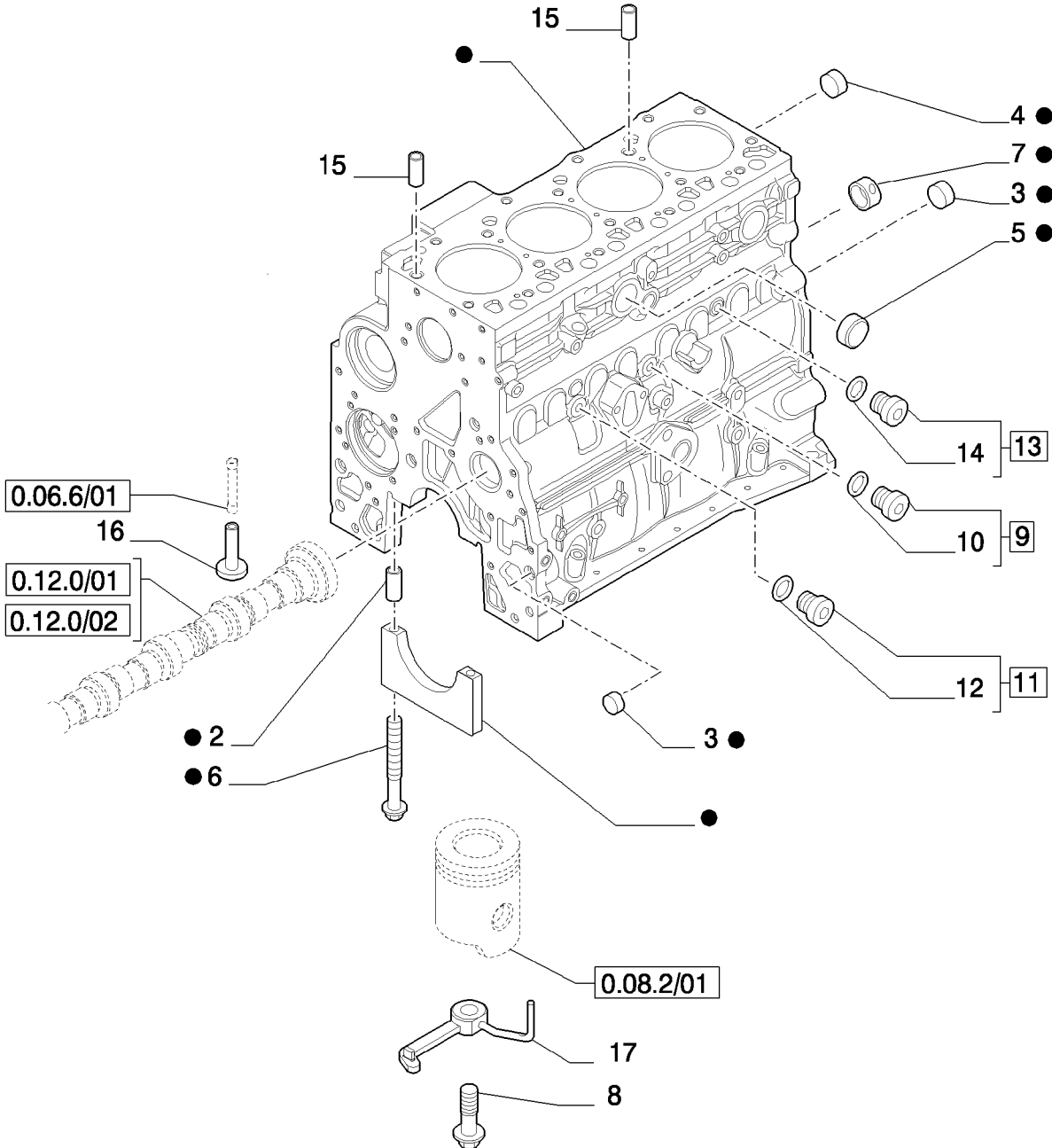
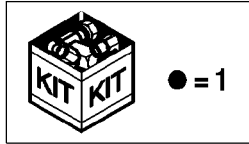
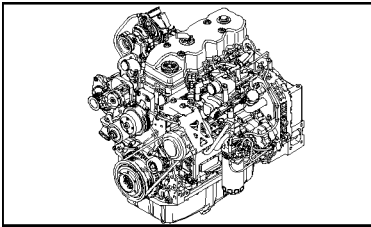
B95B

0.04.0/01

p1

03/08

CRANKCASE

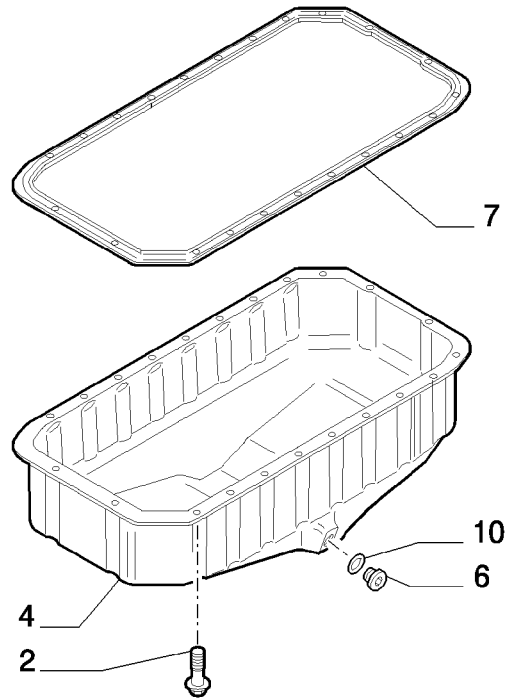
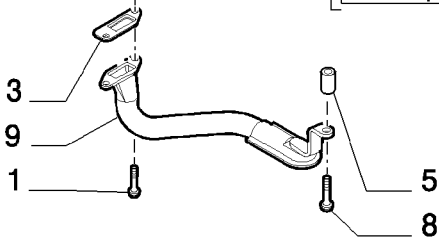
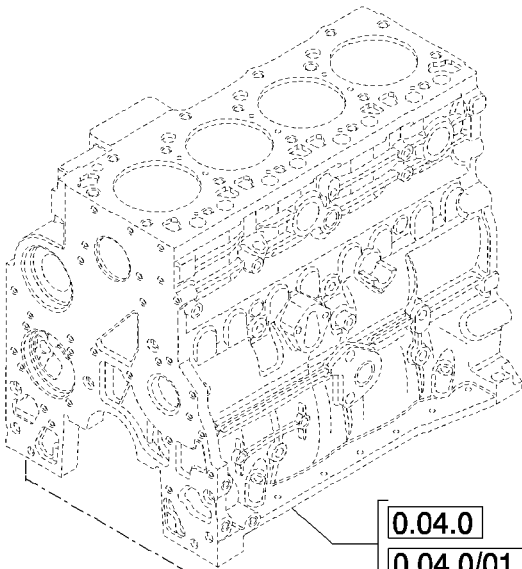
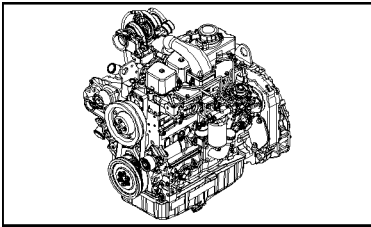


CRANKCASE

REF	FN	PART NUMBER	YR/SN	QTY	DESCRIPTION
1		2830082		1	CYLINDER BLOCK, - ASSY
2		4899026		10	DOWEL
3		4895039		3	PLUG
4		4895038		4	PLUG
5		4895228		2	PLUG
6		4891353		10	SCREW, Flg Hd, M12 x 1.5 x 120
7		4895040		1	BUSHING
8		4894218		4	SCREW
9		4895605		1	PLUG, 14x1.5 - ASSY
10		4899115		1	O-RING
11		4899009		1	PLUG, 10x1.5 - ASSY
12		4899072		1	O-RING
13		4895392		1	PLUG, 18x1.5 - ASSY
14		4895393		1	O-RING
15		4895049		2	DOWEL
16		4899803		8	TAPPET
17		2852202		4	NOZZLE, LUB. OIL JET

B95B

ENGINE OIL SUMP



ENGINE OIL SUMP

REF	FN	PART NUMBER	YR/SN	QTY	DESCRIPTION
1		2852234		2	SCREW, Hex Flg, M8 x 1.25 x 20
2		4899091		22	SCREW, Hex Flg, M8 x 1.25 x 40
2		4895489		2	SCREW
3		4898301		1	GASKET, - ASSY
4		2852011		1	PAN, ENGINE OIL
5		2852016		1	SPACER
6		2856086		1	PLUG
7		2852012		1	GASKET
8		4895538		1	SCREW
9		2852013		1	STRAINER, ELEMENT
10		2853728		1	O-RING

B95B

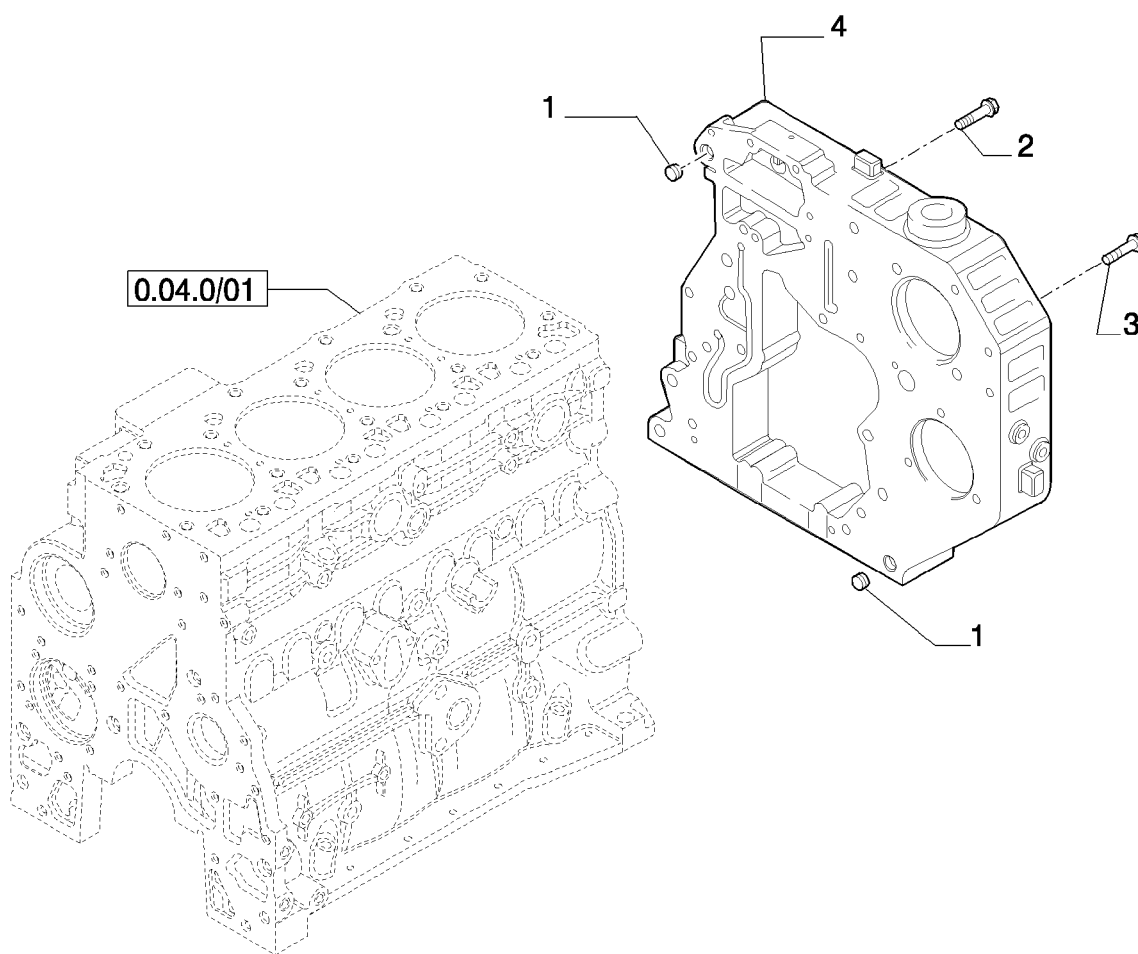
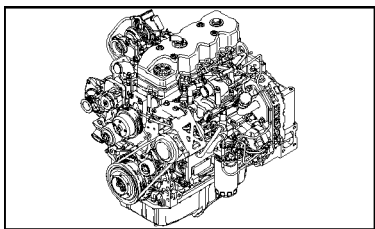
0.04.3/01

01

p1

03/08

CRANKCASE COVERS



0.04.3/01

01

p1

03/08

CRANKCASE COVERS

REF	FN	PART NUMBER	YR/SN	QTY	DESCRIPTION
1		4899026		2	DOWEL
2		4899078		4	SCREW, Hex Flg, M8 x 1.25 x 45
3		4899093		2	SCREW, Hex Flg, M10 x 1.5 x 30
3		4899073		1	SCREW, Hex Flg, M12 x 1.75 x 30
3		4896939		3	SCREW, M10x1.5x50
4		2855801		1	HOUSING

B95B

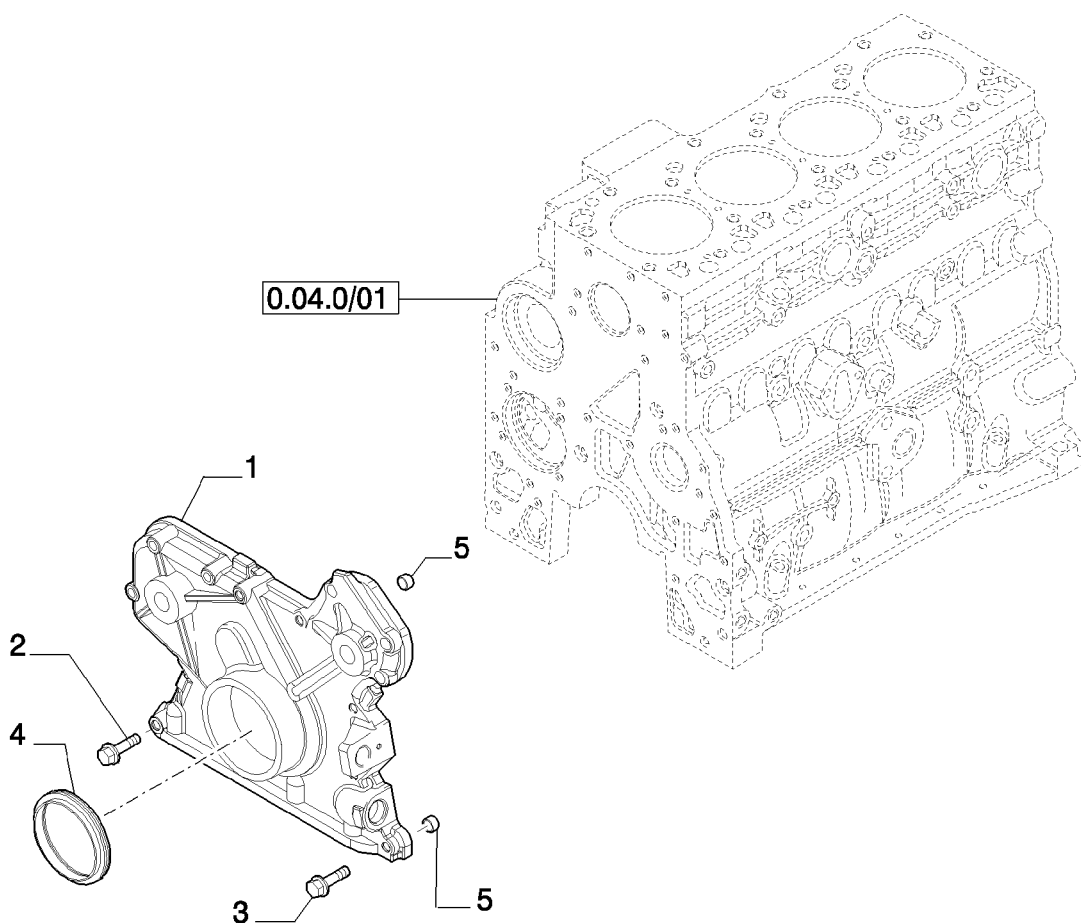
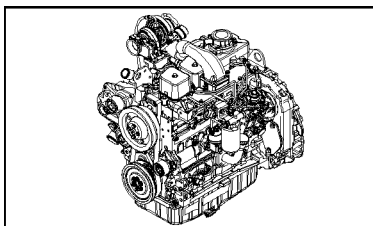
0.04.3/01

02

p1

03/08

CRANKCASE COVERS



0.04.3/01

02

p1

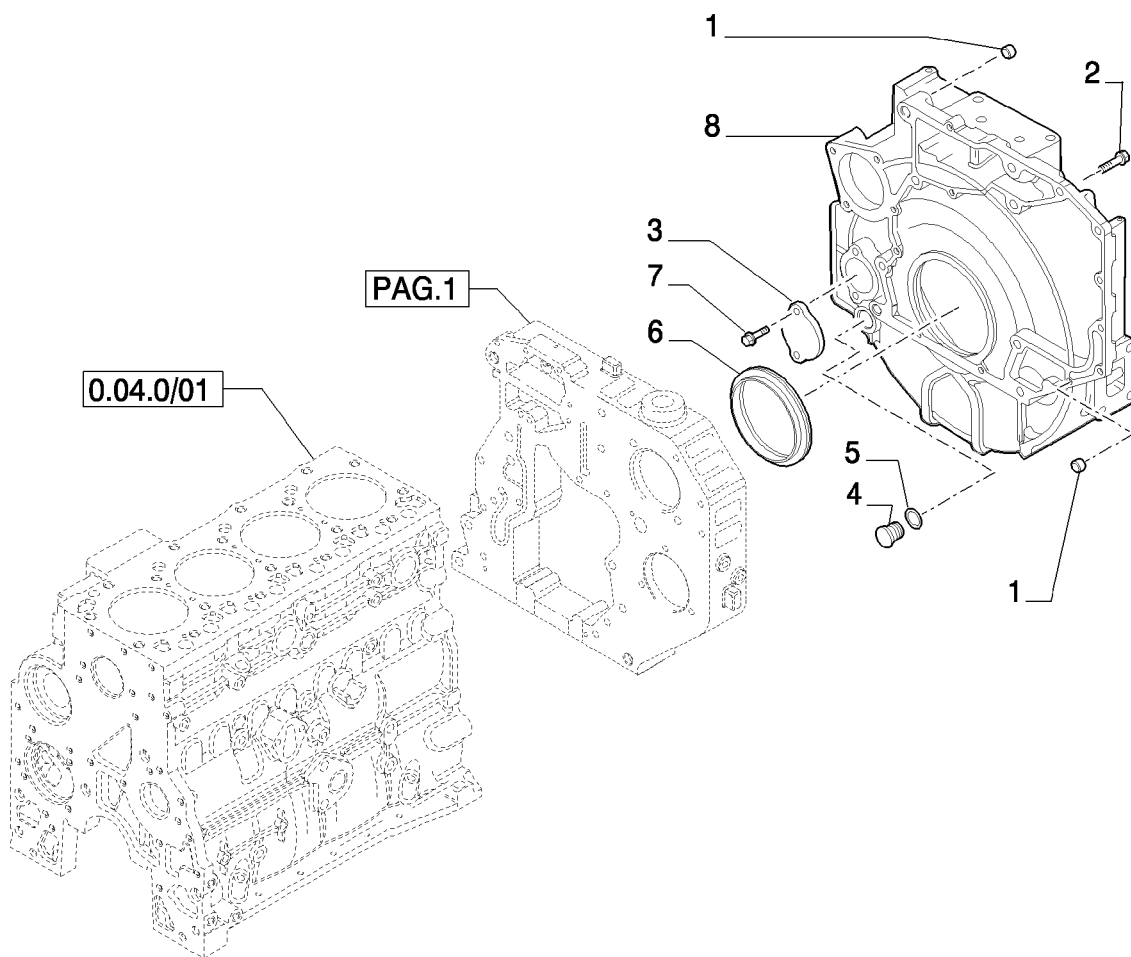
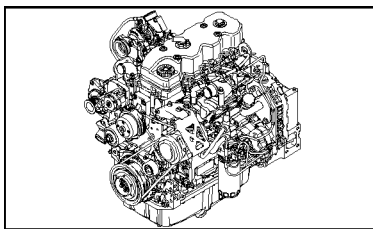
03/08

CRANKCASE COVERS

REF	FN	PART NUMBER	YR/SN	QTY	DESCRIPTION
1		4897024		1	COVER, - FRONT
2		4899078		5	SCREW, Hex Flg, M8 x 1.25 x 45
3		4899063		8	SCREW, Hex Flg, M8 x 1.25 x 30
4		4890832		1	SEAL
5		4891209		2	DOWEL

B95B

CRANKCASE COVERS



0.04.3/01

03

p1

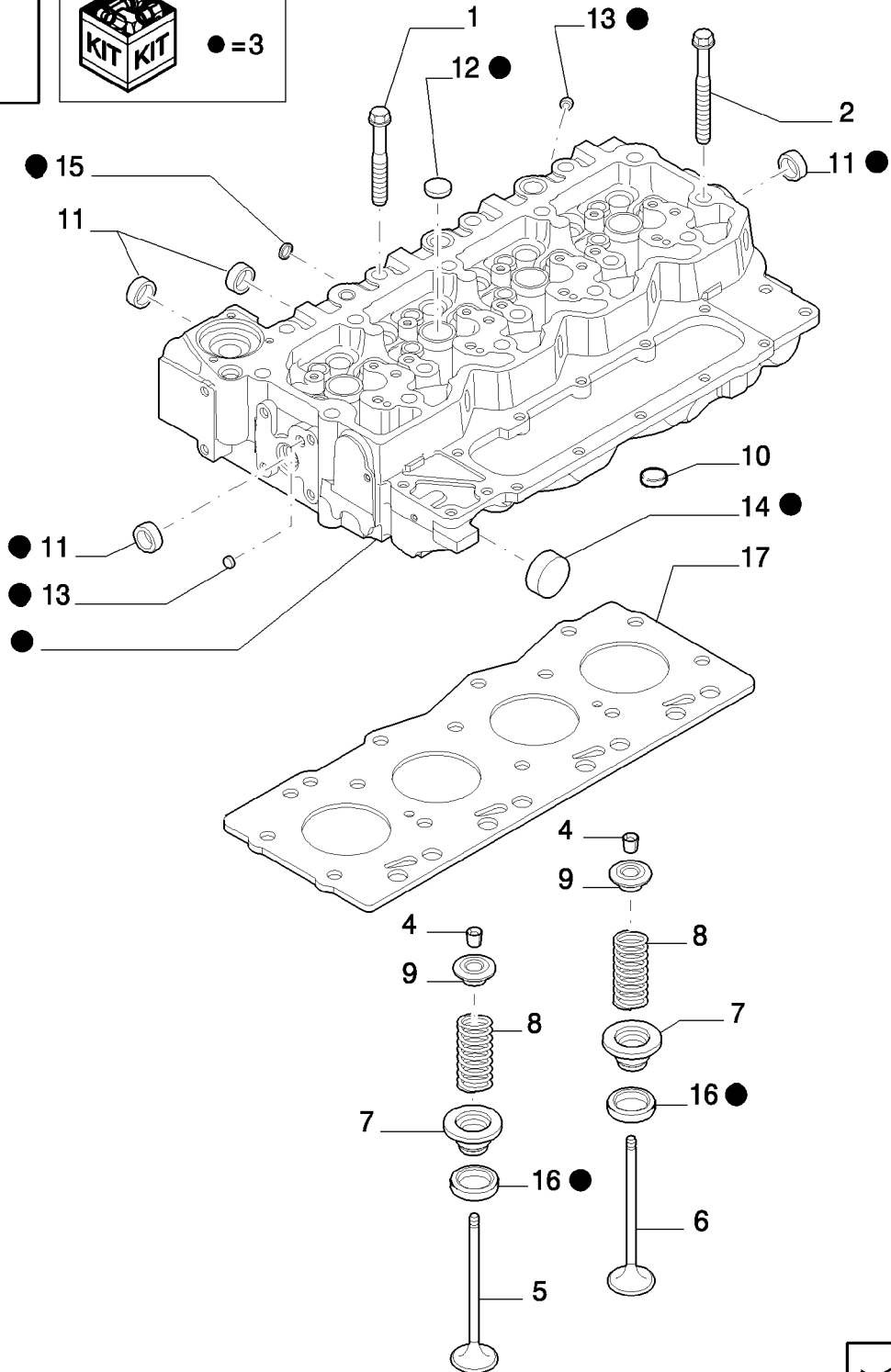
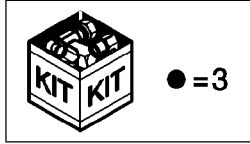
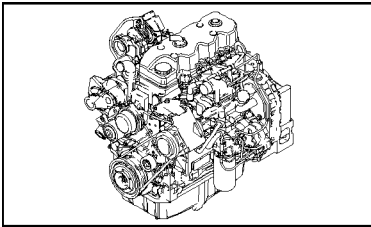
03/08

CRANKCASE COVERS

REF	FN	PART NUMBER	YR/SN	QTY	DESCRIPTION
1		4899026		2	DOWEL
2		4899109		2	SCREW, Hex, M10 x 1.5 x 80
2		4892915		7	SCREW, M10x1.5x40
2		4899076		6	SCREW, Hex Flg, M12 x 1.75 x 80
2		4897499		2	SCREW, M12x1.75x120
2		4899068		2	SCREW, Hex Flg , M8 x 1.25 x 16
2		2852865		2	SCREW, M10x35
3		4895155		1	COVER
4		4895378		1	PLUG
5		4895379		1	O-RING, M21.82 ID x 3.53 Thk
6		4890833		1	SEAL
7		4899143		2	SCREW, Hex Flg, M10 x 1.5 x 140
8		2855803		1	HOUSING

B95B

CYLINDER HEAD



CYLINDER HEAD

REF	FN	PART NUMBER	YR/SN	QTY	DESCRIPTION
1		4891024		8	SCREW
2		4891025		10	SCREW
3		2831266		1	CYLINDER HEAD, -ASSY
4		4899081		32	COTTER, ROCKER ARM
5		4895051		8	VALVE, ENG EXHAUST, STD
6		4895052		8	VALVE, ENGINE, INLET, STD
7		2831287		16	SEAT, SPRING
8		4895073		16	SPRING, VALVE
9		4895074		16	CUP
10		4893036		1	PLUG
11		4895085		9	PLUG, 25.74mm OD
12		4895089		7	PLUG, .886" OD
13		4895406		5	PLUG, 9.8mm OD
14		4895407		1	PLUG, 38.28mm OD
15		4895408		2	PLUG, .511" OD
16		4893244		16	VALVE SEAT
17		2830706		1	GASKET, CYLINDER HEAD, SP=1.25
17		2830707		1	GASKET, CYLINDER HEAD, SP=1.15

B95B

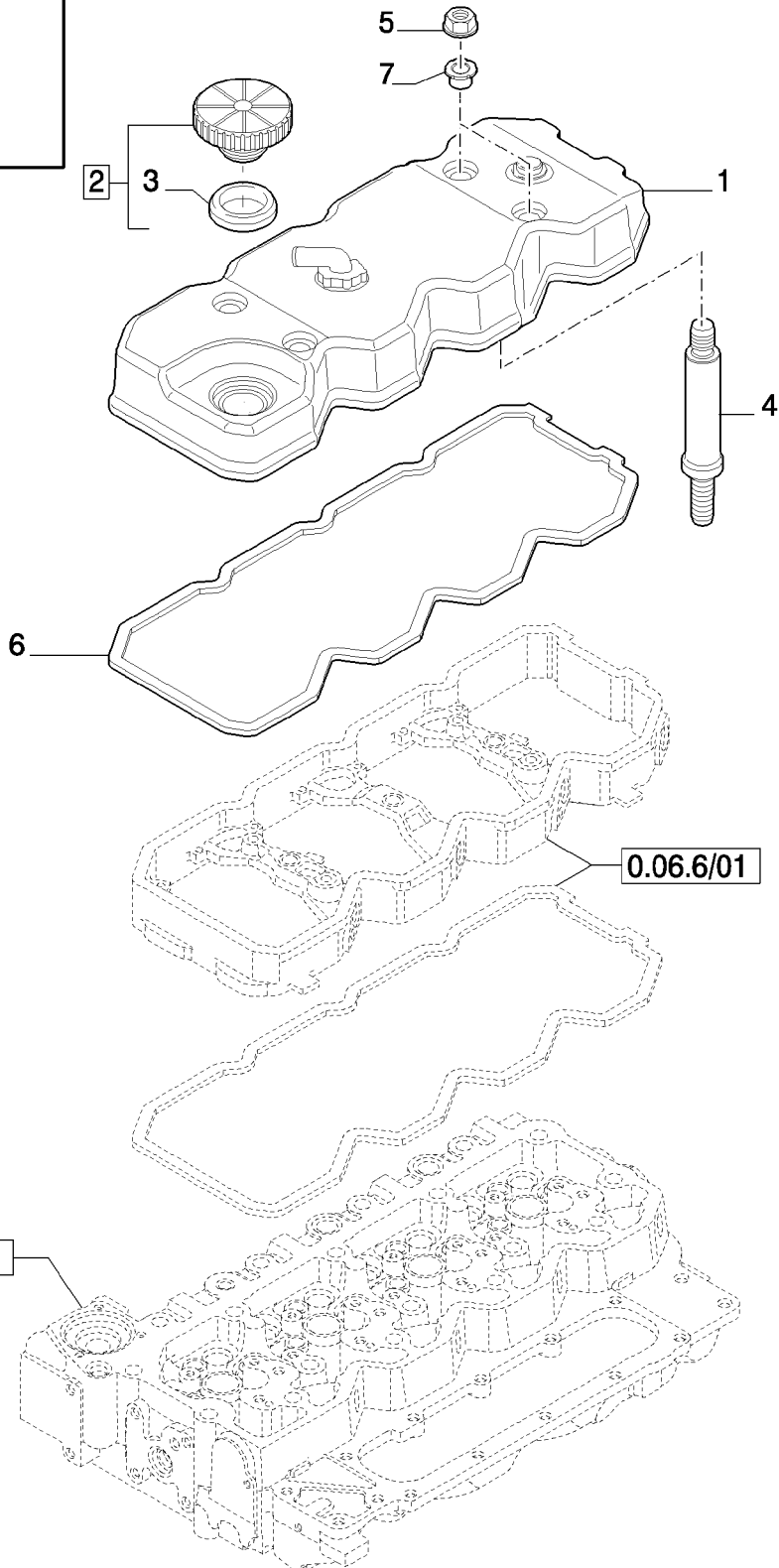
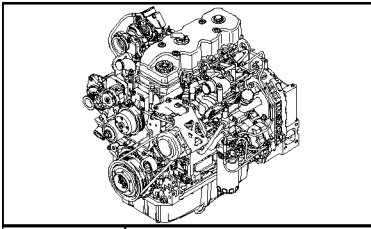
0.06.3/01

01

p1

03/08

CYLINDER HEAD COVERS



0.06.3/01

01

p1

03/08

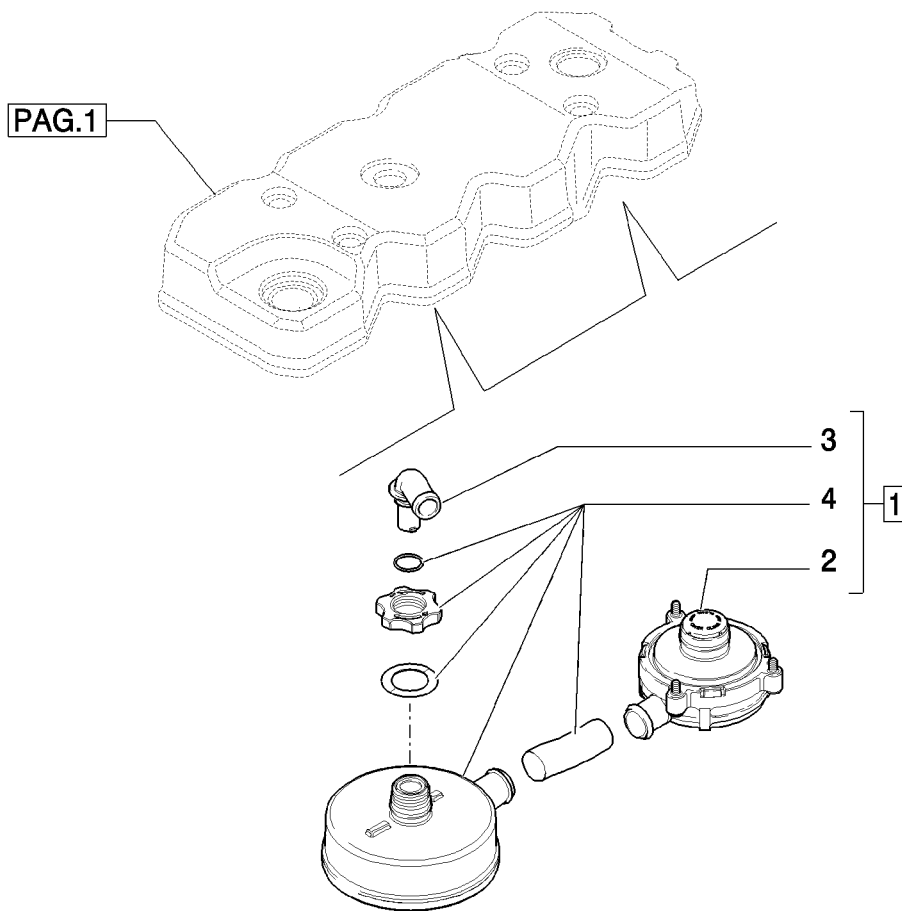
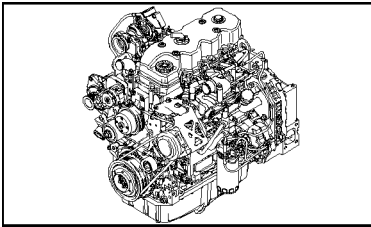
CYLINDER HEAD COVERS

REF	FN	PART NUMBER	YR/SN	QTY	DESCRIPTION
1	1	2853858		1	COVER, VALVE, - ASSY
2		2856707		1	CAP, FILLER, - ASSY
3		2852774		1	GASKET
4		2854812		4	STUD
5		4893936		4	NUT
6		4899228		1	GASKET
7		4899239		4	SILENTBLOC

(1) See Page 2 (Incl. p/n 2853826)

B95B

CYLINDER HEAD COVERS



0.06.3/01

02

p1

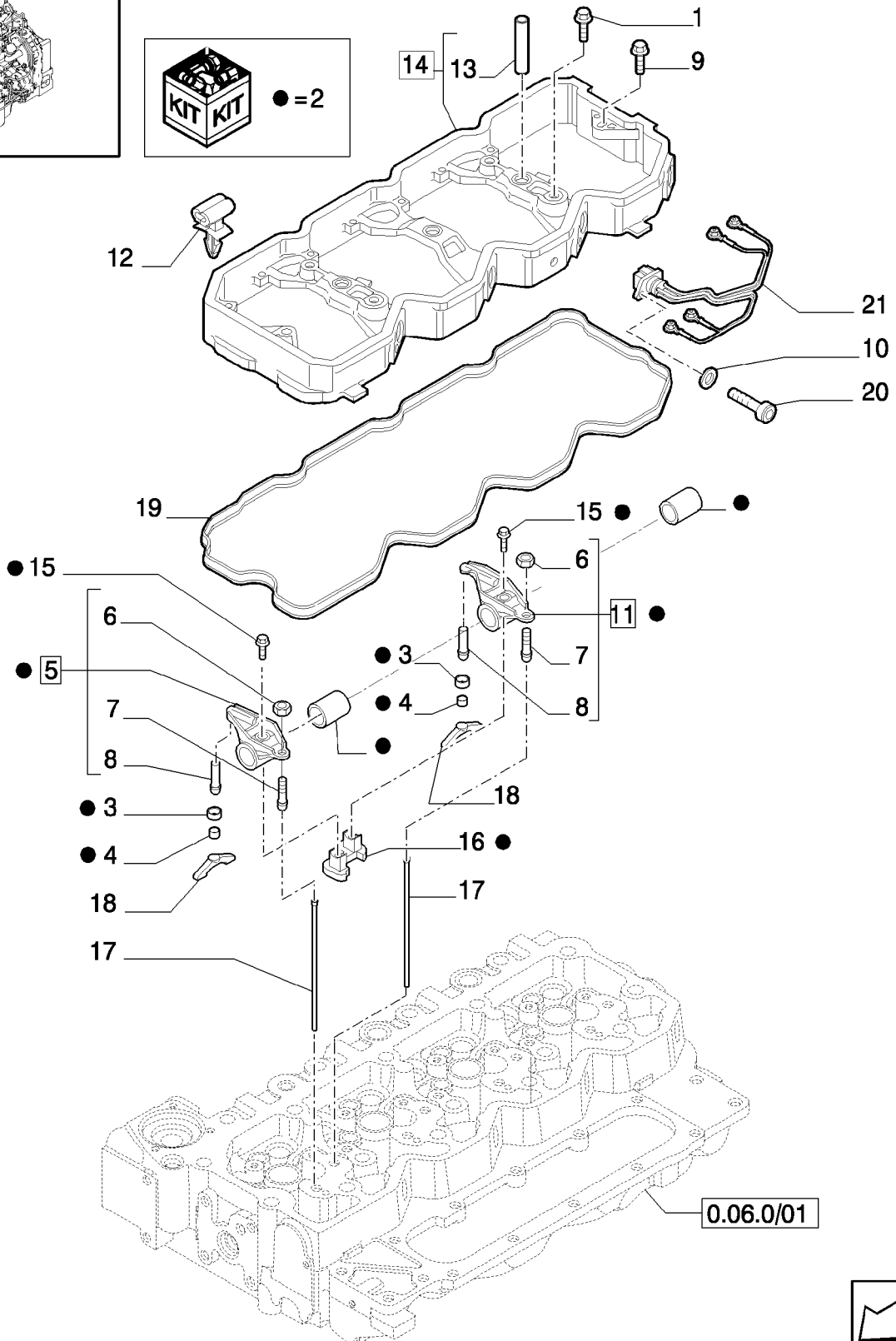
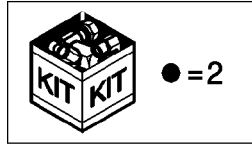
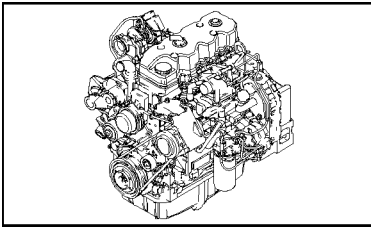
03/08

CYLINDER HEAD COVERS

REF	FN	PART NUMBER	YR/SN	QTY	DESCRIPTION
1		2853826		1	BREATHER, - ASSY
2		504153150		1	VALVE
3		87307807		1	ELBOW
4		504153151		1	ELEMENT

B95B

ROCKER SHAFT



ROCKER SHAFT

REF	FN	PART NUMBER	YR/SN	QTY	DESCRIPTION
1		4895432		3	SCREW, M8x1.25x70
2		2856458		4	ROCKER ARM, - ASSY
3		4897248		2	RETAINER
4		4897245		2	SOCKET
5		4895068		1	ROCKER ARM, - ASSY
6		4895198		2	NUT
7		2830222		2	SCREW, ADJUSTMENT
8		4895065		2	SPACER
9		4899089		2	SCREW, Hex Flg, M8 x 1.25 x 50
10		2852776		2	WASHER, 6x11
11		4895067		1	ROCKER ARM, - ASSY
12		2852428		4	CLIP
13		4899245		3	SLEEVE
14		4899256		1	HOUSING, - ASSY
15		2856460		2	SCREW
16		4893487		4	SUPPORT
17		4895031		8	ROD, PUSH
18		2854530		8	CROSSBAR
19		2853535		1	GASKET
20		2852602		2	SCREW, 6x16
21		4896052		2	HARNESS, WIRE

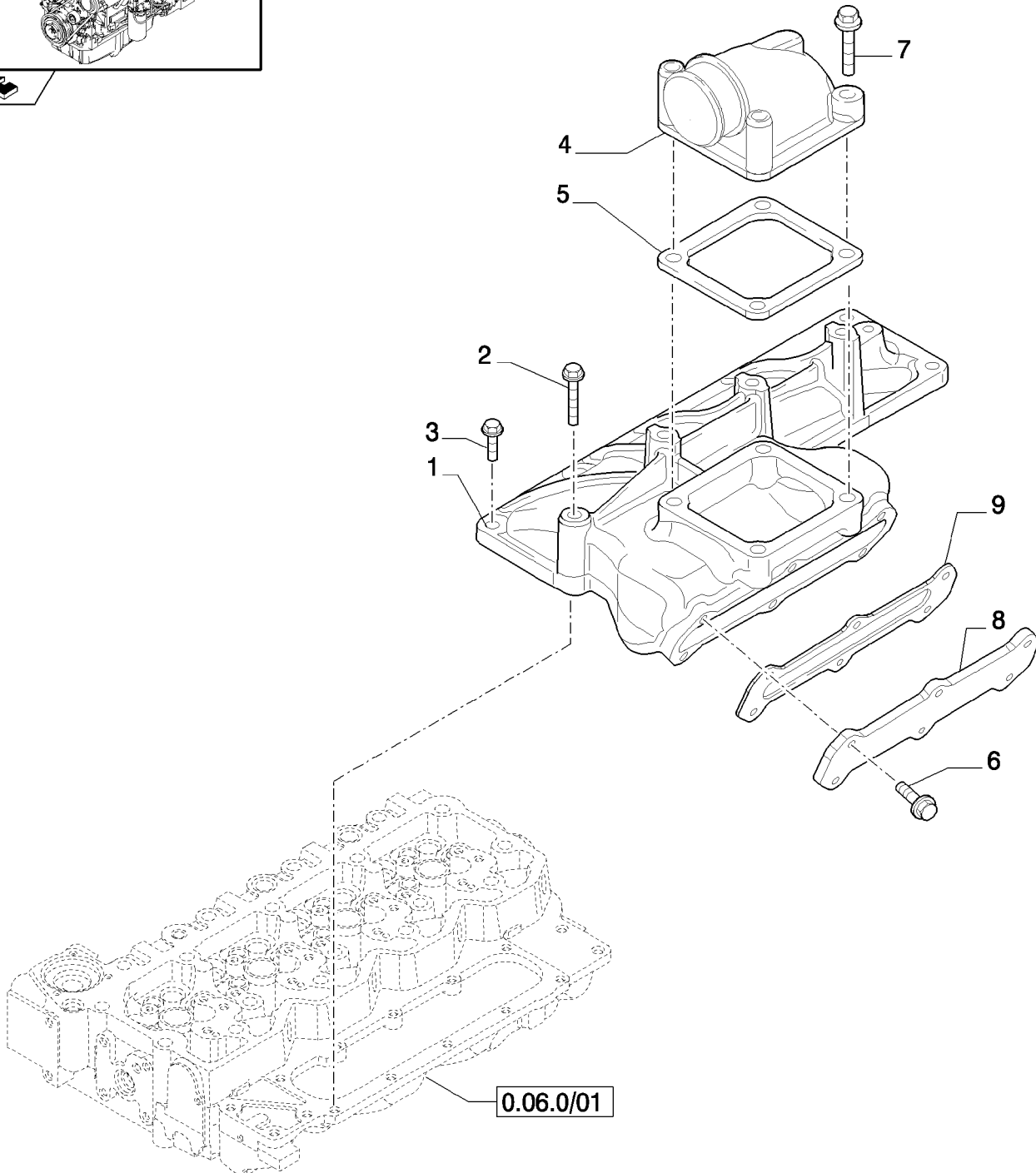
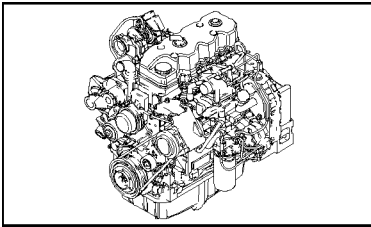
B95B

0.07.1/01

p1

03/08

MANIFOLD - INTAKE



MANIFOLD - INTAKE

REF	FN	PART NUMBER	YR/SN	QTY	DESCRIPTION
1		2855805		1	MANIFOLD, INLET
2		4895432		1	SCREW
3		4899039		6	SCREW, Hex Flg, M8 x 1.25 x 25
4		2855809		1	MANIFOLD
5		4899921		1	GASKET
6		2854702		6	SCREW, M6x20
7		2852267		2	SCREW
8		2854700		1	COVER
9		2854701		1	GASKET

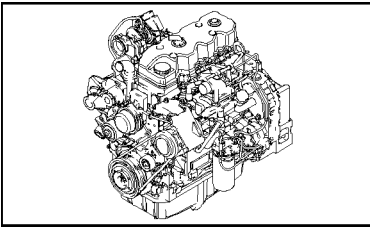
B95B

0.07.7/01

p1

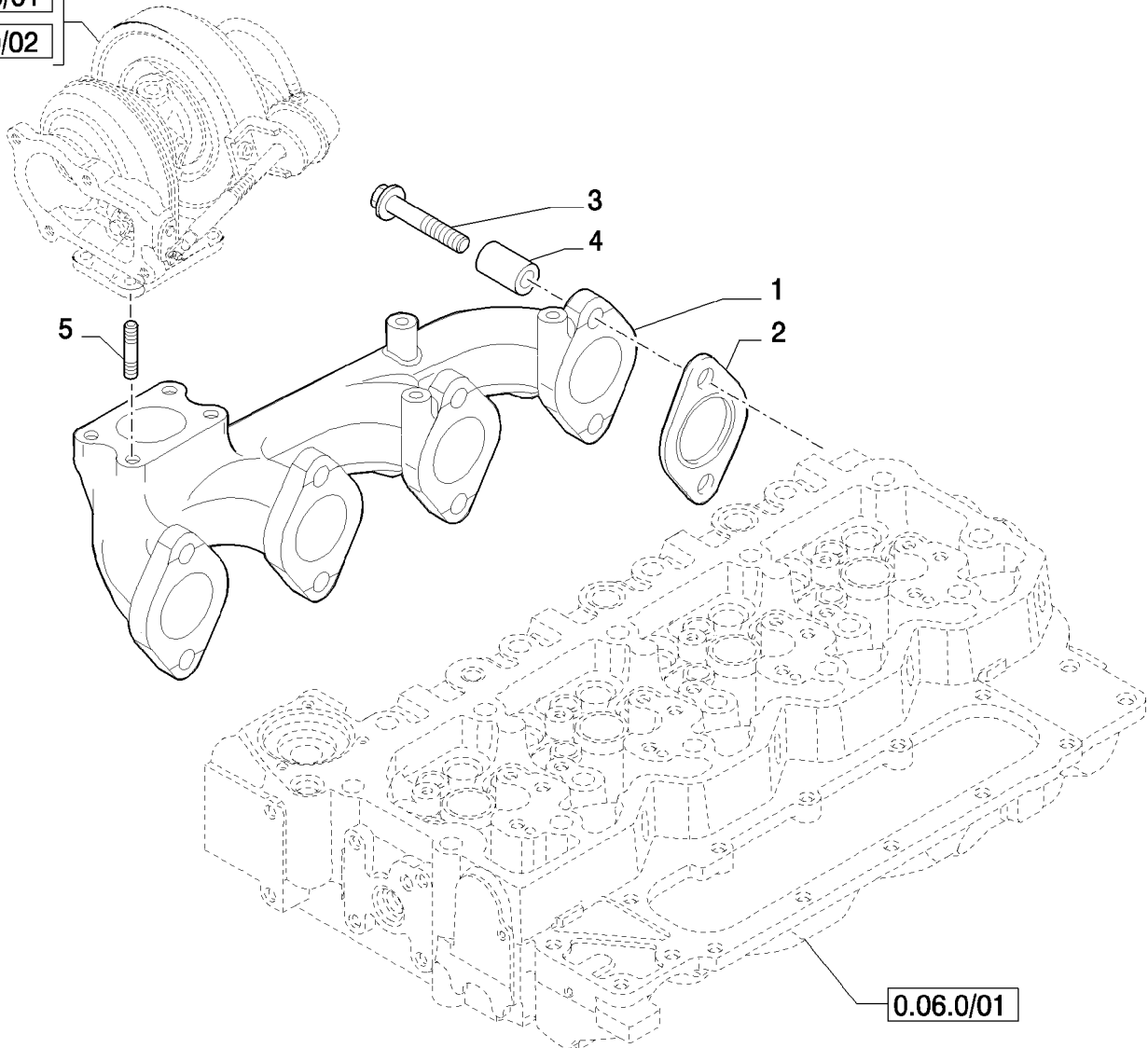
03/08

EXHAUST MANIFOLD



0.24.0/01

0.24.0/02



0.06.0/01



0.07.7/01

p1

03/08

EXHAUST MANIFOLD

REF	FN	PART NUMBER	YR/SN	QTY	DESCRIPTION
1		2855807		1	MANIFOLD, EXHAUST
2		2830444		4	GASKET
3		2852744		8	SCREW
4		4895336		8	SPACER
5		4899119		4	STUD

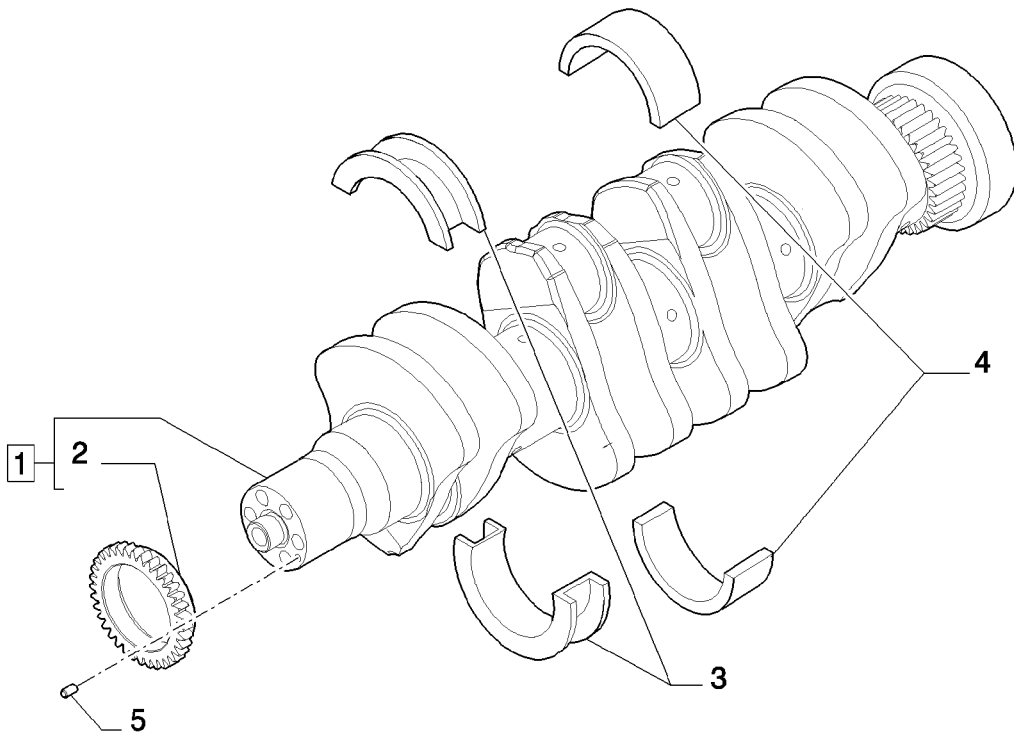
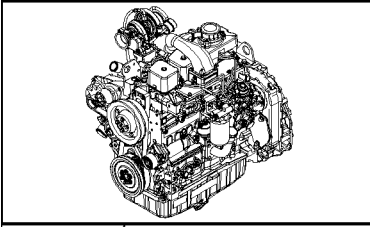
B95B

0.08.0

p1

03/08

CRANKSHAFT



This as a preview PDF file from best-manuals.com



Download full PDF manual at best-manuals.com