

Quality Changes the World



# Motor Grader

## STG170C-8



**Parts Book**



# Parts Book



## **STG170C-8** **Motor Grader**

---

Equipment No. PY5517CB0468



## **Overview**

This book provides illustrations and parts listings required to properly identify and order replaceable parts on your Sany machine.

If this book becomes damaged, lost or illegible, request a replacement copy from your Sany distributor.

In case you sell this machine, be sure to give this parts book to the new owner.

Improvements in the design may lead to changes in detail which may not be indicated in this book. Always consult your Sany distributor for the latest available information on your equipment or if you have questions regarding information in this book.

## **Storing this parts book**

This publication applies only to this specific machine and should not be used with any other machines.

Always keep this book available for reference.

## **Contact Details**

SANY Industry Town, Economic and Technological Development Zone, Changsha, Hunan China 410100

Tel: 0731-84031888

Fax: 0731-84031999

Service Hotline: 4008 87 8318

Complaint Hotline: 4008 87 9318

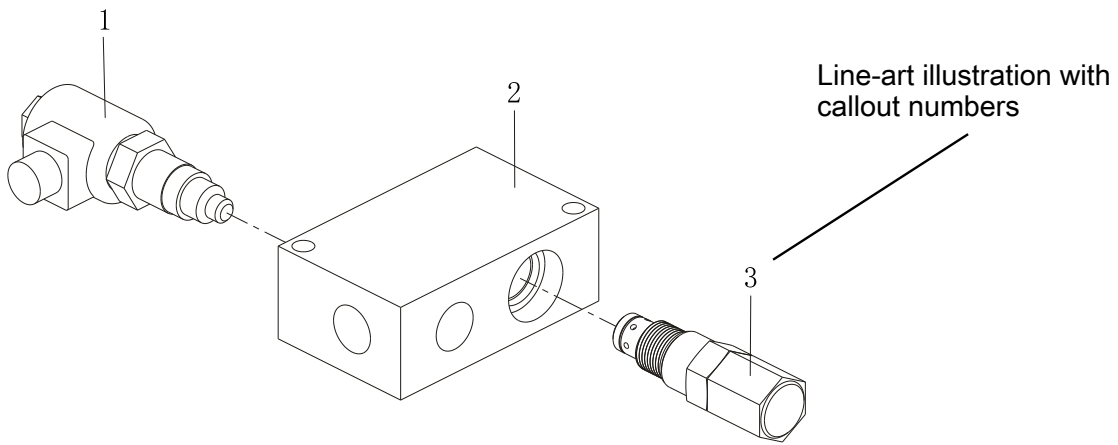
Email: Sanyservice@sany.com.cn

Website: www.sanyglobal.com

## **Sany Group Service Information System**

<http://sis.sanygroup.com>

Page header with parts code, and parts description



Page footer with page number, chapter title, machine model and product name

Page header with parts code, and parts description

INDEX: that matches callout numbers on previous illustration page

SEE PAGE: for page information of the part or assembly

INDEX	PART NO.	DESCRIPTION	QTY	SEE PAGE
1	B220401000459	Valve Assembly, Solenoid	1	
2	A820103010415	Change Valve Block, Cooling Oil Motor	1	
3	B220400000083	Relief Valve	1	

PART NO.: to be used along with DESCRIPTION to identify the part or assembly

DESCRIPTION: to be used along with PART NO. to identify the part or assembly

QTY: it indicates the number of each part used in this assembly

Page footer with page number, chapter title, machine model and product name

BLANK PAGE



# Table of Contents

<b>Group 1 Motor grader .....</b>	<b>1-1</b>
PDJ100000031 Motor grader.....	1-2
<b>Group 2 frame assembly .....</b>	<b>2-1</b>
PDJ005603748 frame assembly .....	2-2
<b>Group 3 Swing Support Assembly .....</b>	<b>3-1</b>
PDJ005637523 Swing Support Assembly .....	3-2
PDJ005636294 Locking-pin oil cylinder .....	3-4
11112471 Valve Control .....	3-6
B220400000079 Solenoid Valve .....	3-10
PDJ005159614 Swing Support .....	3-14
PDJ005796054 Fork Assembly .....	3-16
<b>Group 4 Piping diagram of hydraulic system .....</b>	<b>4-1</b>
PDJ005626563 Piping diagram of hydraulic system .....	4-2
PDJ005628982 Oil cylinder.....	4-8
PDJ005235990 Steering Gear Assembly .....	4-10
13411250 Brake Valve Gp .....	4-12
14061886 Accumulator Component .....	4-16
PDJ005629119 Piping diagram of hydraulic cooling system .....	4-18
PDJ005628975 Piping diagram of hydraulic steering system.....	4-20
PDJ005235988 Center Swivel Joint .....	4-22
PDJ005235989 Rotary Motor Assembly .....	4-24
14355358 Mounting Plate Of Prefill Valve.....	4-26
PDJ005622510 Piping diagram of hydraulic braking system.....	4-32
PDJ005628976 Piping diagram of hydraulic operating system .....	4-34
13723420 Working Pump As .....	4-38
PDJ005238806 Oil Return Collection Block .....	4-44
14061884 Priority Valve Installation .....	4-46
<b>Group 5 working operation device .....</b>	<b>5-1</b>
PDJ006010020 working operation device .....	5-2
14540577 New 5-Section Right Multi-Way Valve Assembly .....	5-6
14540564 New 5-Section Left Multi-Way Valve Assembly .....	5-8
<b>Group 6 Cab Assm .....</b>	<b>6-1</b>
PDJ005222504 Cab Assm .....	6-2
<b>Group 7 Oil Tank Assembly .....</b>	<b>7-1</b>

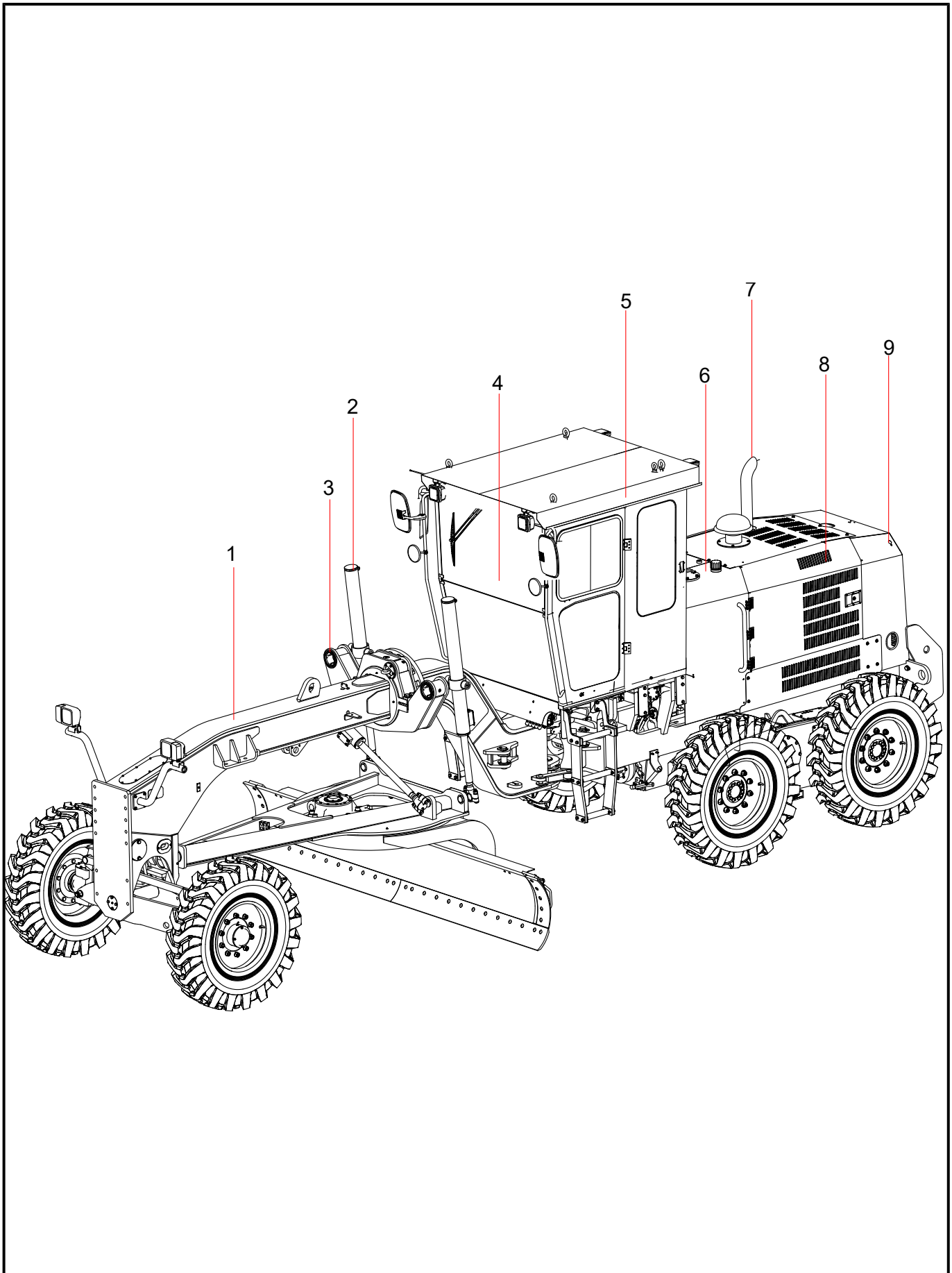
PDJ005255727 Oil Tank Assembly .....	7-2
<b>Group 8 Power system assembly .....</b>	<b>8-1</b>
PDJ006011331 Power system assembly .....	8-2
PDJ005229161 Fuel System .....	8-4
PDJ005239045 Intake System .....	8-6
PDJ006011328 coolant system .....	8-8
PDJ006094048 Engine Installation .....	8-12
<b>Group 9 hood assem .....</b>	<b>9-1</b>
PDJ006099316 hood assem .....	9-2
<b>Group 10 Motor Grader Electrical system .....</b>	<b>10-1</b>
PDJ006036748 Motor Grader Electrical system .....	10-2
PDJ005248116 Front Console .....	10-4
PDJ005217600 Stg165C-8 Harness Assembly .....	10-6
PDJ005248117 Right Caonsole .....	10-8
14007499 System Power .....	10-12
<b>Group 11 Toolbox .....</b>	<b>11-1</b>
PDJ005612436 Toolbox .....	11-2
<b>Group 12 Wheel As .....</b>	<b>12-1</b>
A810304040010 Wheel AS .....	12-2
<b>Group 13 Rear Axle AS .....</b>	<b>13-1</b>
14118301 Rear Axle AS .....	13-2
61000257 Rear Axle .....	13-4
131401020287B012 Left Balance Box Assembly .....	13-6
131401020287B008 Planetary Assembly .....	13-8
131488000979A Main Reducer Assembly .....	13-10
131401020287B015 Right Balance Box Assembly .....	13-12
131401020287B001 Rear Wheel Assembly .....	13-14
131488000989A Brake Assembly .....	13-16
131401020287B002 Front Wheel Assembly .....	13-18
131488000989A Brake Assembly .....	13-20
PDJ004814390 Steel Tube .....	13-22
<b>Group 14 TM Assembly .....</b>	<b>14-1</b>
PDJ005728047 TM Assembly .....	14-2
PDJ005728009 Double-variable assembly .....	14-4
<b>Group 15 AC SYSTEM .....</b>	<b>15-1</b>
PDJ005372536 AC SYSTEM .....	15-2

<b>Group 16 Operating device</b> .....	<b>16-1</b>
PDJ005613256 Operating device .....	16-2
<b>Group 17 Blade As</b> .....	<b>17-1</b>
14004064 Blade As .....	17-2
13863782 Blade .....	17-8
<b>Group 18 front axle assembly</b> .....	<b>18-1</b>
PDJ005618106 front axle assembly .....	18-2
13051725 Hinge, Ball .....	18-14
A810305030029 Oblique Tie Rod .....	18-16
10885656 Linkages, Steering .....	18-18
10659441 Left Ball Joint As .....	18-22
10659957 Right Ball Joint As .....	18-24

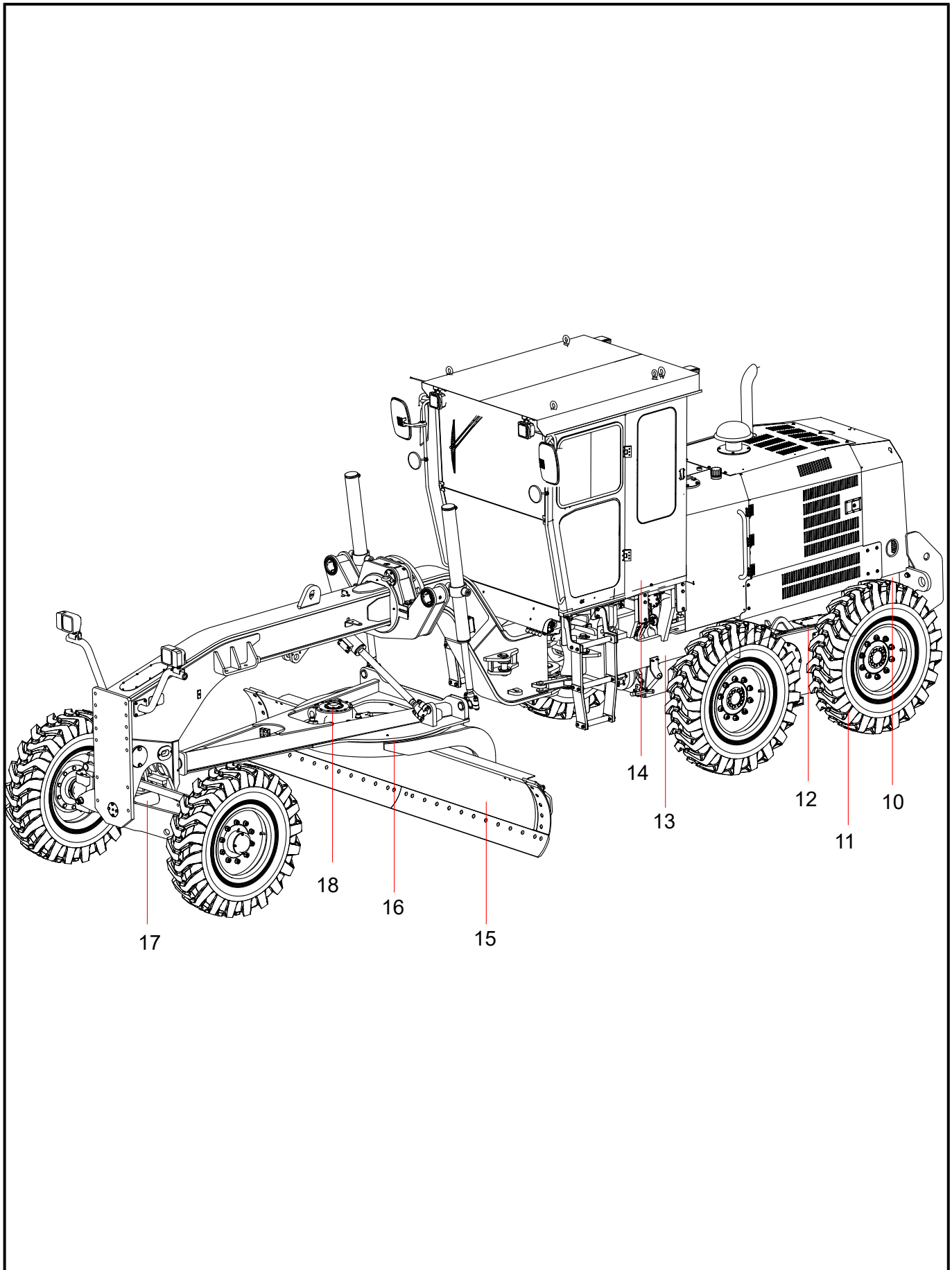
BLANK PAGE

# Group 1

## Motor grader



INDEX	PART NO.	DESCRIPTION	QTY	SEE PAGE
1	PDJ005603748	frame assembly	1	2-2
2	PDJ005637523	Swing Support Assembly	1	3-2
3	PDJ005626563	Piping diagram of hydraulic system	1	4-2
4	PDJ006010020	working operation device	1	5-2
5	PDJ005222504	Cab Assm	1	6-2
6	PDJ005255727	Oil Tank Assembly	1	7-2
7	PDJ006011331	Power system assembly	1	8-2
8	PDJ006099316	hood assem	1	9-2
9	PDJ006036748	Motor Grader Electrical system	1	10-2

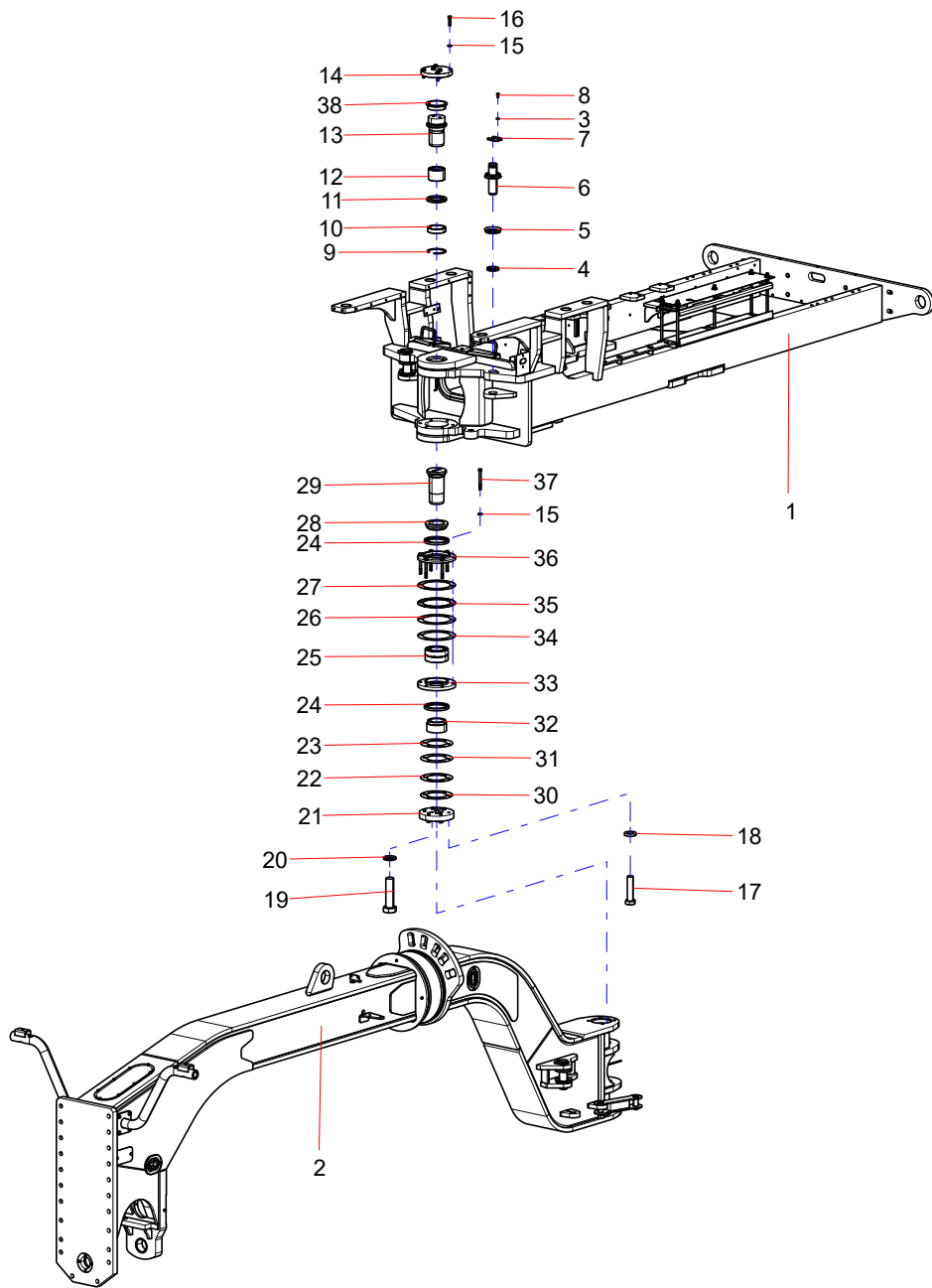




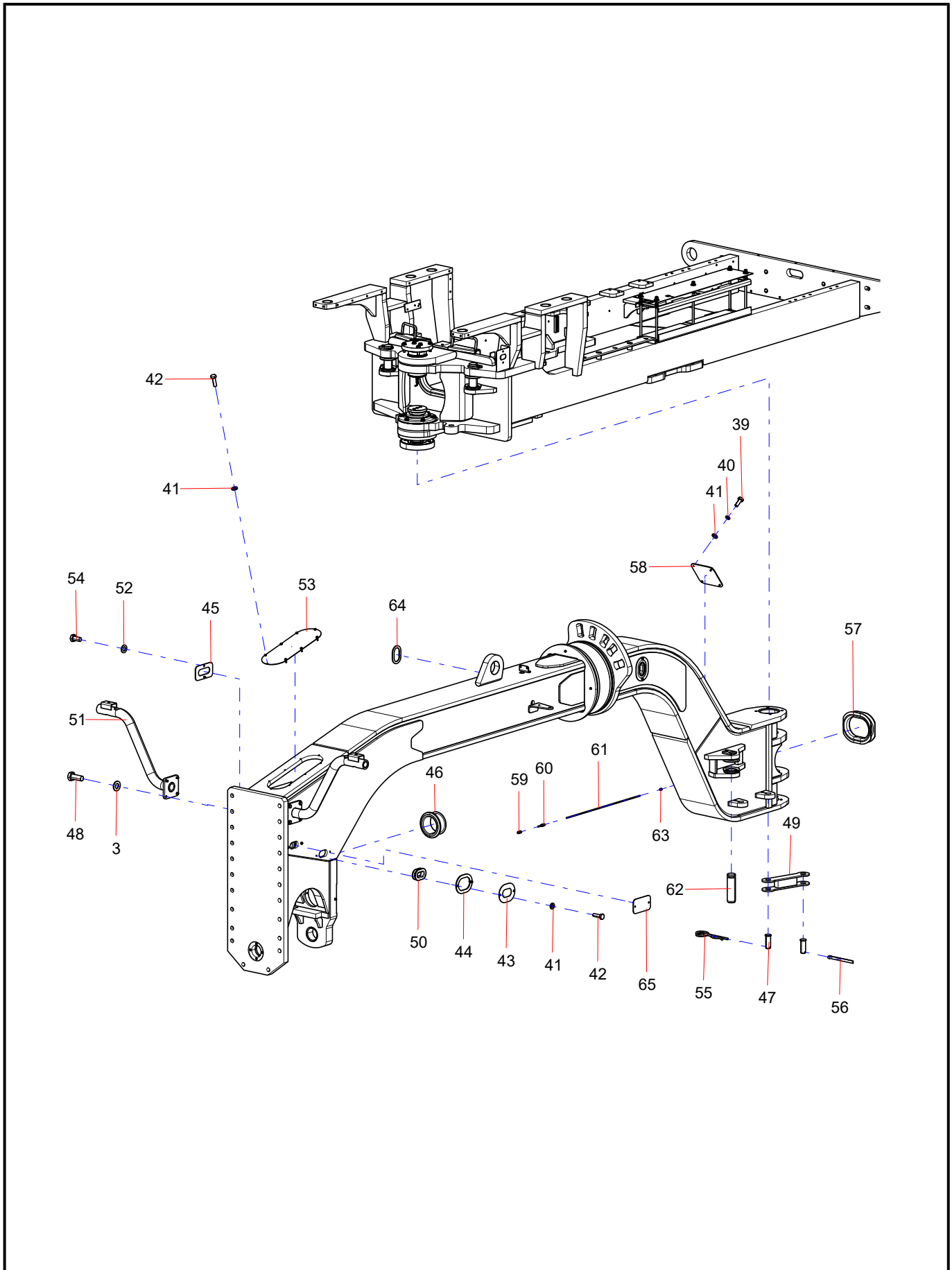
INDEX	PART NO.	DESCRIPTION	QTY	SEE PAGE
10	PDJ005612436	Toolbox	1	11-2
11	A810304040010	Wheel As	6	12-2
12	14118301	Rear Axle AS	1	13-2
13	PDJ005728047	TM Assembly	1	14-2
14	PDJ005372536	AC SYSTEM	1	15-2
15	PDJ005613256	Operating device	1	16-2
16	14004064	Blade As	1	17-2
17	PDJ005618106	front axle assembly	1	18-2
18	60199612	Reducer	1	

BLANK PAGE

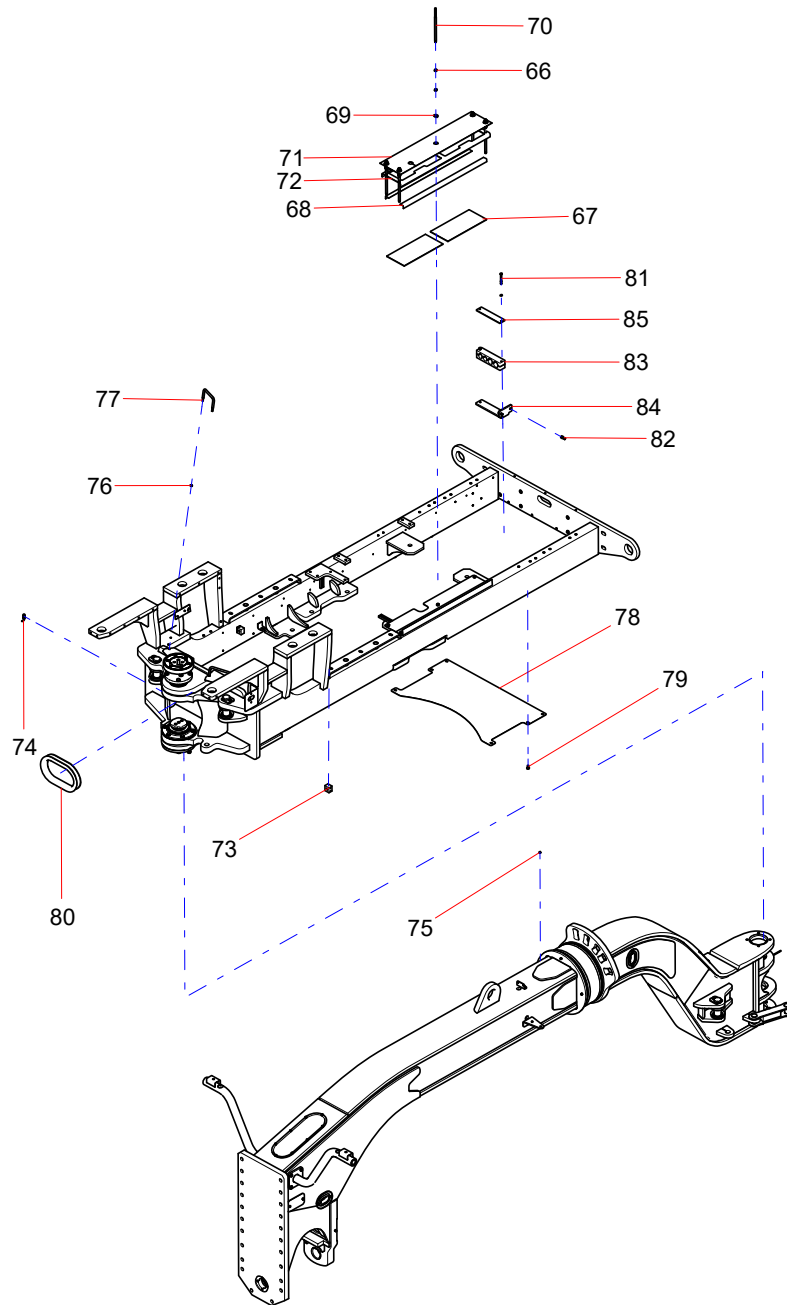
Group 2  
frame assembly



INDEX	PART NO.	DESCRIPTION	QTY	SEE PAGE
1	PDJ005941732	rear frame	1	
2	PDJ005603283	Front Frame	1	
3	A210405000011	Washer	25	
4	A820102010078	Ring	8	
5	A820606020011	Dust-proof Ring	8	
6	PDJ005017840	Pin	2	
7	13633688	Clamp Plate	4	
8	A210111000089	Bolt	4	
9	A210416000033	Ring, Retainer	1	
10	11095274	Bushing	1	
11	A210691000087	FB Oil Seal	2	
12	12375617	Shaft Sleeve	1	
13	11098697	Upper Pin Shaft	1	
14	11098698	Upper Connecting Board	1	
15	A210491000121	Washer	12	
16	A210111000042	Bolt	6	
17	A210110000009	Bolt	6	
18	60013683	Washer	6	
19	A210111000055	Bolt	4	
20	60161156	Washer	4	
21	11098687	Lower Connecting Board	1	
22	11098690	Adjusting Shim	1	
23	11098688	Adjusting Shim	1	
24	B230101000458	TRE Oil Seal	2	
25	60033113	Roller Bearing	2	
26	11098693	Adjusting Shim	1	
27	11098695	Adjusting Shim	1	
28	11412991	Spacer Sleeve	1	
29	PDJ005031136	Lower Pin Shaft	1	
30	11098691	Adjusting Shim	1	
31	11098689	Adjusting Shim	1	
32	11098686	Spacer Sleeve	1	
33	11098703	Flange	1	
34	11098692	Adjusting Shim	1	
35	11098694	Adjusting Shim	2	
36	11098702	Upper Flange	1	
37	A210110000004	Bolt	6	
38	11098699	Upper Shaft Sleeve	1	



INDEX	PART NO.	DESCRIPTION	QTY	SEE PAGE
3	A210405000011	Washer	25	
39	A210111000079	Bolt	4	
40	A210401000016	Washer	4	
41	A210405000006	Washer	24	
42	A210111000080	Bolt	20	
43	13866761	Upper Plate	5	
44	13866760	Lower Plate	2	
45	14273295	Mounting Plate	1	
46	PDJ005603749	Protective Sleeve	1	
47	A210508000023	Pin Shaft	2	
48	A210111000018	Bolt	8	
49	PDJ005017839	Coupling Bar	1	
50	13616514	Rubber Hose Protective Sleeve	5	
51	13105057	Front Lamp Support	2	
52	A210405000007	Washer	2	
53	A820101020646	Cover Plate	1	
54	A210111000088	Bolt	2	
55	A829900000072	Cotter Pin	1	
56	A210501000010	Pin	1	
57	14055786	Rubber Grommet	1	
58	14096911	Cover Plate	1	
59	60191773	Ferrule-type Straight Adapter	2	
60	60045017	Detachable Fitting	1	
61	13954777	Lubrication Rubber Pipe	1	
62	14011911	Pin Shaft	2	
63	A210804000002	Oil Cup	4	
64	14110447	Pressure Plate	3	
65	14037428	Front Baffle	1	



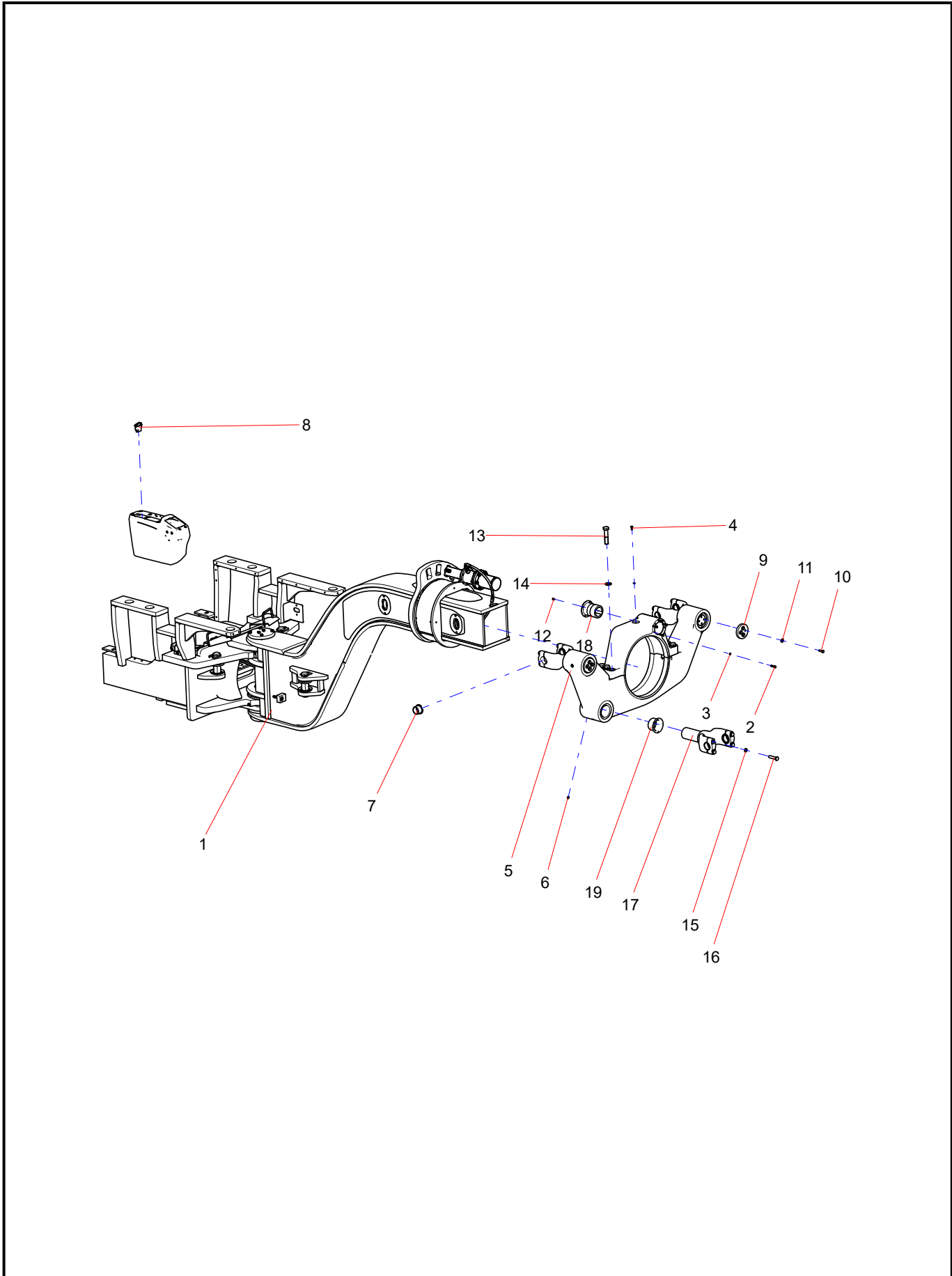


INDEX	PART NO.	DESCRIPTION	QTY	SEE PAGE
66	A210307000017	Nut	20	
67	10265779	Rubber Plate	2	
68	14064546	Rubber Strip	2	
69	A210404000003	Washer	10	
70	14230444	Fixed Rod	5	
71	14230667	Water Fender	1	
72	14230443	Pressure Plate	1	
73	B210851000002	Clamp	2	
74	60045016	Detachable Elbow Fitting (Small)	1	
75	A210804000001	Oil Cup	4	
76	A210307000012	Nut	4	
77	PDJ004901958	Rubber Hose Support	2	
78	PDJ005603747	Plate	1	
79	A210111000011	Bolt	6	
80	PDJ005789725	Rubber Guard Ring	1	
81	A210108000097	Bolt	2	
82	A210204000161	Screw	2	
83	PDJ005916534	Rubber Hose Support	2	
84	PDJ005916535	Supporting Board of Tube Clamp	1	
85	PDJ005918578	Pressure Board of Tube Clamp	1	

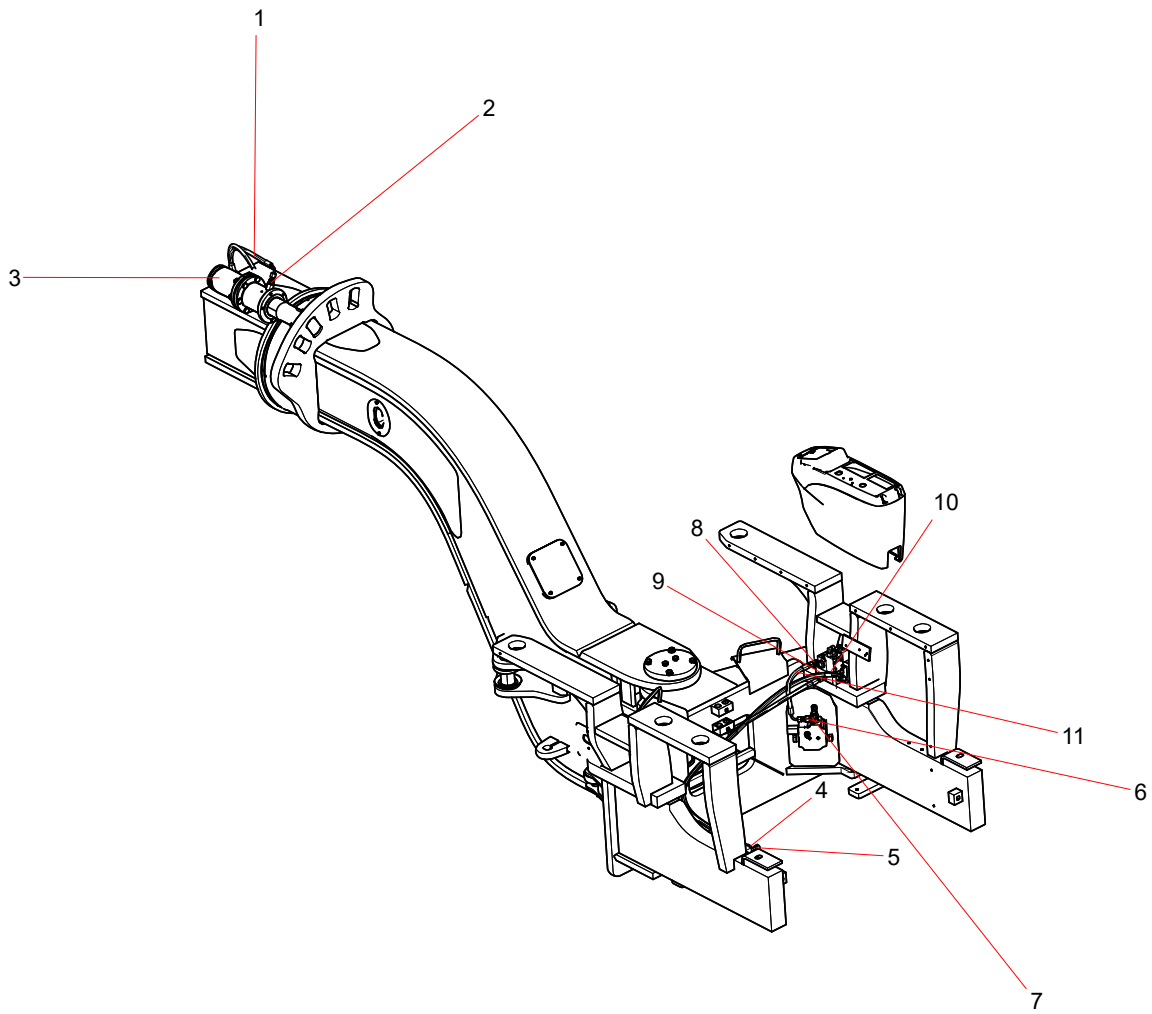
BLANK PAGE

# Group 3

## Swing Support Assembly



INDEX	PART NO.	DESCRIPTION	QTY	SEE PAGE
1	PDJ005636294	Locking-pin oil cylinder	1	3-4
2	A210204000184	Screw	5	
3	A210401000017	Washer	6	
4	A210111000343	Bolt	1	
5	PDJ005159614	Swing Support	1	3-14
6	A210804000001	Oil Cup	4	
7	12101632	Bushing	6	
8	60340808	Rocker Switch	1	
9	14004449	Pressure Plate	3	
10	A210111000026	Bolt	12	
11	A210491000120	Washer	12	
12	A210211000007	Screw	4	
13	A210110000240	Bolt	6	
14	A210405000009	Washer	6	
15	A210401000004	Washer	12	
16	A210111000291	Bolt	12	
17	PDJ005796054	Fork Assembly	3	3-16
18	A820202000058	Bushing	1	
19	13328406	Bushing	6	



This as a preview PDF file from [best-manuals.com](http://best-manuals.com)



Download full PDF manual at [best-manuals.com](http://best-manuals.com)