

**350D/400D ADT
(DAVENPORT SN 608490-)
(NON DAVENPORT
SN 201812-)**



JOHN DEERE

PARTS CATALOG

**350D/400D ADT (DAV SN 608490-)
(NON DAVENPORT SN 201812-)**

PC10003 (Apr-07) English

Worldwide Construction and Forestry Division

Worldwide Edition
Litho in U.S.A. (Revised)
COPYRIGHT © 2007
DEERE & COMPANY
Moline, Illinois
All rights reserved

000I-1

350D/400D ARTICULATED DUMP TRUCK (DAVENPORT SN 608490-) (NON DAVENPORT SN 201812-)

INTRODUCTION AND CUSTOMER INFORMATION

TX1010391A -UN-11AUG06



*LEFT SIDE VIEW OF JOHN DEERE 350D AND 400D DUMP TRUCK (MANUFACTURED 2006-)
(DAVENPORT BUILT SERIAL NUMBER 608490-)
(RICHARDS BAY OR EISENACH BUILT SERIAL NUMBER 201812-)
TO THE CUSTOMER*

THE PART NUMBERS IN THIS PARTS CATALOG WERE CORRECT AT THE TIME YOUR CATALOG WAS PUBLISHED. IT IS OUR POLICY TO CONSTANTLY IMPROVE OUR MACHINES AND THEREFORE, PART NUMBERS MAY CHANGE. WHEN ORDERING PARTS, VERIFY PART NUMBERS THROUGH YOUR DEALER.

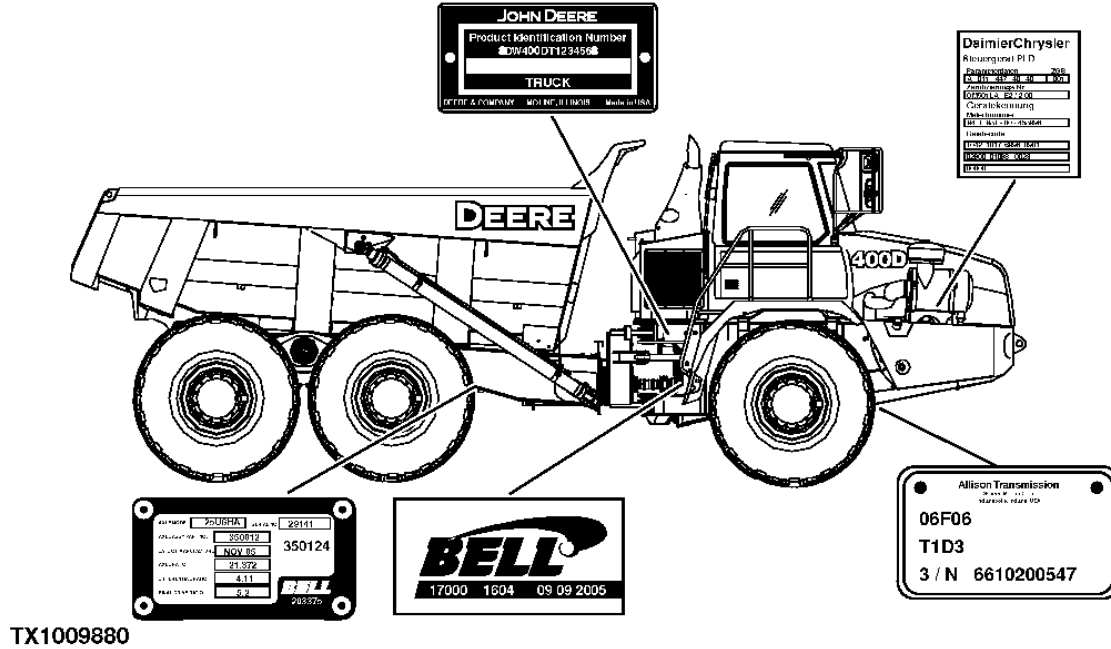
(SPECIFICATIONS AND DESIGN SUBJECT TO CHANGE WITHOUT NOTICE.)

0001-2

350D/400D ARTICULATED DUMP TRUCK (DAVENPORT SN 608490-) (NON DAVENPORT SN 201812-)

SERIAL NUMBER PLATE LOCATION

TX1009880 -UN-14AUG06



EACH TRUCK HAS FIVE SERIAL NUMBER PLATES:

A PRODUCT IDENTIFICATION NUMBER PLATE, AN ENGINE SERIAL NUMBER PLATE, A TRANSMISSION PLATE, A TRANSFER CASE PLATE, AND AN AXLE SERIAL NUMBER PLATE.

- THE PRODUCT IDENTIFICATION PLATE IS LOCATED BEHIND THE FRONT LEFT TIRE OF THE TRUCK.
- THE ENGINE SERIAL NUMBER PLATE IS LOCATED ON THE RIGHT SIDE OF THE CYLINDER BLOCK NEAR THE STARTER.
- THE TRANSMISSION SERIAL NUMBER PLATE IS LOCATED ON TOP OF THE TRANSMISSION UNDER THE CAB.
- THE TRANSFER CASE SERIAL NUMBER PLATE IS LOCATED ON THE BACK OF THE TRANSFER CASE WHEN APPROACHING THE MACHINE FROM THE RIGHT.
- THE AXLE SERIAL NUMBER PLATE IS LOCATED ON THE RIGHT SIDE OF THE BACK OF THE AXLE.

ORIENTATION REFERENCE

LEFT SIDE, RIGHT SIDE, FRONT AND REAR OF THE MACHINE ARE VIEWED BY FACING IN THE DIRECTION OF THE MACHINE'S FORWARD TRAVEL.

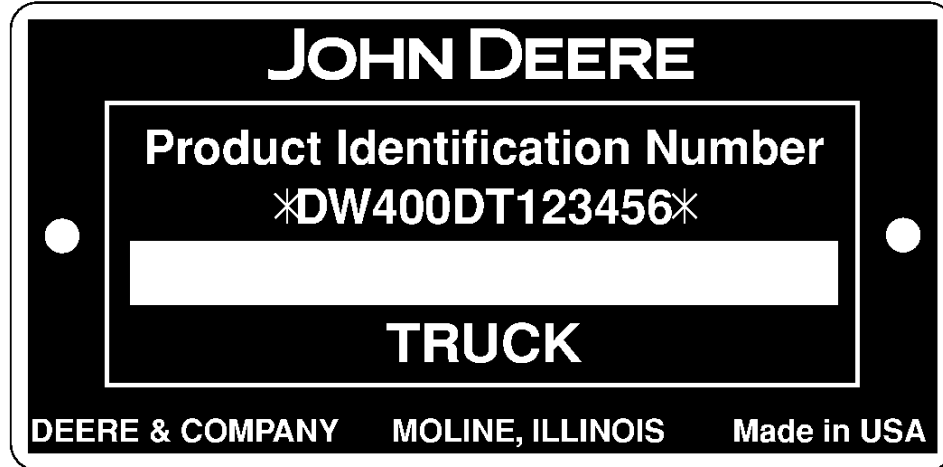
000I-3

350D/400D ARTICULATED DUMP TRUCK (DAVENPORT SN 608490-) (NON DAVENPORT SN 201812-)

PRODUCT IDENTIFICATION NUMBER

TX1009883

-UN-27JUL06



TX1009883

DESIGNATES WHERE MANUFACTURED

DW - DAVENPORT WORKS

DESIGNATES MODEL

AB - RICHARDS BAY

DESIGNATES EXCAVATOR CONFIGURATION

400

DESIGNATES SERIAL NUMBER

DT

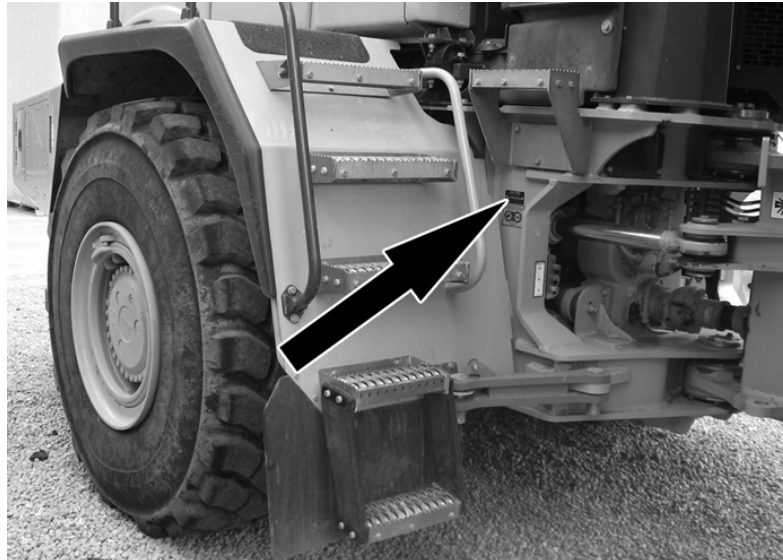
DESIGNATES MACHINE

123456

TRUCK

TX1009882A

-UN-27JUL06



THE PRODUCT IDENTIFICATION PLATE IS LOCATED BEHIND THE FRONT LEFT TIRE OF THE ADT.

0001-4

350D/400D ARTICULATED DUMP TRUCK (DAVENPORT SN 608490-) (NON DAVENPORT SN 201812-)

ENGINE SERIAL NUMBER PLATE

TX1010622

-UN-04AUG06

DaimlerChrysler	
Steuergerät PLD	
Parameterdaten	ZGS
A 011 447 40 40	001
Zerufizierungs Nr	
OM501LA E2 / 2-00	
Geratekennung	
Motornummer	
941. 981 - 00 - 123456	
Geratecode	
1042 1017 6996 0981	
02800 01088 0023	
00000	

TX1010622

MERCEDES ENGINE BUILT BY DAIMLER CHRYSLER

THE MERCEDES ENGINE HAS SIX LINES FOR SERIAL NUMBER DESIGNATION

THE SECOND AND THIRD LINES ARE REQUIRED TO VERIFY ENGINE SPECIFICATIONS

THE SECOND SERIAL NUMBER DESIGNATION LINE ASSIGNS THE MODEL OF THE ENGINE.

- OM501LA

THE THIRD SERIAL NUMBER DESIGNATION LINE ASSIGNS THE SPECIFICATIONS OF THE ENGINE.

- 941.981-00-123456

0001-5

350D/400D ARTICULATED DUMP TRUCK (DAVENPORT SN 608490-) (NON DAVENPORT SN 201812-)

SERIAL NUMBER LISTING INFORMATION

SERIAL NUMBER INFORMATION IS LISTED TO SHOW ON WHICH MACHINES EACH PART CAN BE USED; FOR EXAMPLE:

- THE PART CAN BE USED ON ALL MACHINES.
- 000000- THE PART CAN BE USED ON ALL MACHINES BEGINNING WITH THE SERIAL NUMBER LISTED.
- 000000 THE PART CAN BE USED ON ALL MACHINES UP TO AND INCLUDING THE SERIAL NUMBER LISTED.
- 000000-000000 THE PART CAN BE USED ON ALL MACHINES BETWEEN AND INCLUDING THE SERIAL NUMBERS LISTED.

WHEN XXXXXX'S ARE LISTED IN PLACE OF A SERIAL NUMBER, A SERIAL NUMBER CHANGE WAS MADE BUT THE EXACT SERIAL NUMBER WAS NOT AVAILABLE WHEN THE CATALOG WAS PRODUCED.

DIRECTION ARROW

ARROWS ARE USED WITH ILLUSTRATIONS TO INDICATE THE FRONT OF THE UNIT. "RIGHT-HAND" AND "LEFT-HAND" SIDES ARE DETERMINED BY FACING IN THE DIRECTION OF MACHINE FORWARD TRAVEL.

BOX-ENCLOSED ILLUSTRATIONS

A KEY NUMBER, SHOWN IN THE PARTS LIST, IS ASSIGNED TO A BOX ENCLOSING ALL PARTS SOLD AS A SERVICE ASSEMBLY.

COMPLETE GOODS LISTINGS

COMPLETE GOODS ARE LISTED IN BOLD FACE TYPE. ORDER SEPARATELY. DO NOT INCLUDE ON REPLACEMENT PARTS ORDER.

SI UNITS OF MEASURE

METRIC DIMENSIONS ARE GIVEN, WHERE APPLICABLE, THROUGHOUT THIS PARTS CATALOG.

REMARKS AND ABBREVIATIONS

THE FOLLOWING REMARKS AND ABBREVIATIONS MAY APPEAR THROUGHOUT THE PARTS CATALOG. REFER TO THE BELOW CHART FOR TRANSLATIONS TO LANGUAGES OTHER THAN ENGLISH.

0001-6

350D/400D ARTICULATED DUMP TRUCK (DAVENPORT SN 608490-) (NON DAVENPORT SN 201812-)

REMARKS AND ABBREVIATIONS

TX1007193

-UN-04MAY06

PHRASE	ENGLISH	FRANCAIS	DEUTSCH	ITALIANO	ESPAÑOL	SVENSKA
ALSO ORDER, ORD W/	Also order	Commander aussi	Ebenso bestellen	Ordinare anche	Pedir también	Beställ även
AMP	Ampere	Ampère	Ampere	Ampere	Amperio	Ampere
APPL, APPL ONLY	This application only	Uniquement pour cette utilisation	Nur für diese Anwendung	Solo per questa applicazione	Solo para este propósito	Endast för denna användning
AR	As required	Selon le besoin	Nach Bedarf	Secondo necessità	Según necesidad	Vid behov
ASSY	Complete assembly	Ensemble complet	Kompl.-Zusammenbau	Gruppo completo	Montaje completo	Komplett montering
CA, CONVENIENCE ASSY	Convenience assembly	Ensemble convenance	Komfort-Zusammenbau	Montaggio pratico	Montaje de conveniencia	Lämplig montering
CCW	Counter-clockwise	Sens anti-horaire	Gegen Uhrzeigersinn	Senso antiorario	A la izquierda	Moturs
COMPLETE	Complete	Complet	Vollständig	Completo	Completo	Fullständig
COMPLETE GOODS	Complete goods	Compléter marchandises	Vollst. Waren	Merci complete	Mercancías completas	Kompleta varor
CTL CUT TO LENGTH	Cut to length	Couper à la longueur	Auf Länge zurechtschneiden	Tagliare alla lunghezza	Corte a la longitud	Skära till längd
CW	Clockwise	Sens horaire	Im Uhrzeigersinn	In senso orario	A la derecha	Medurs
FOR	For	Pour	Für	Per	Para	För
FRONT	Front	Avant	Vorn	Anteriore	Frente	Fram
GAS	Gasoline	Essence	Benzin	Benzina	Gasolina	Bensin
HP	Horsepower	Puissance en cv	Leistung	Potenza	Potencia	Hästkraft
HFWD	Hydraulic Front-wheel Drive	Traction Avant Hydraulique	Hydraulischer Vorderradantrieb	Trazione Anteriore Idraulica	Tracción Delantera Hidraulica	Hydraulisk Framhjulsdrift
HS, HEAD MARKED	High strength, head marked	Haute résistance, tête marquée	Hochfest, vorn gekennzeichnet	Contrassegnato in testa, ad alta resistenza	Alta fuerza, marca en cabeza	Hög styrka, huvudmärkt
ID	Inside diameter	Diamètre intérieur	Innendurchmesser	Diametro interno	Diá. interior	Innerdiameter
INCH	Inch	Pouce	In.	Pollice	Pulg.	Tum
INCL KEYS	Includes keys...	Comprend les positions...	Einschließlich Schlüssel...	Include le chiavette...	Incluye posiciones...	Inklusive nycklar...
INCL, INCLUDES	Includes...	Comprend...	Enthält...	Include...	Incluye...	Inkluderar...
INCLUDES PARTS/ ITEMS MARKED	Includes parts/items marked...	Comprend les pièces/articles marqués...	Enthält gekennzeichnete Teile/Pos. ...	Include i pezzi e gli elementi contrassegnati...	Incluye piezas marcadas...	Inkluderar markerade delar/artiklar...
INNER	Inner	Intérieur	Innerer	Interno	Interno	Inre, invändig
KIT	Kit	Kit	Kit	Kit	Juego	Sats
L	Number of links	Nombre de maillons	Anzahl der Glieder	Numero di maglie	Nº de eslabones	Antal länkar
LGTH	Length	Longueur	Länge	Lunghezza	Longitud	Längd
LGP	Low Ground Pressure	Faible Pression Au Sol	Niederer Bodendruck	Bassa Pressione Sul Suelo	Baja Presion Sobre El Suelo	Laagt Marktryck
LH	Left-hand	Gauche	Links	Sinistra	Izquierda	Vänster
LT	Long Track	Chenille Longue	Mit Langem Laufwerk	Cingolo Lungo	Cadena Largo	Laangt Larvband
LOW, LOWER	Lower	Inférieur	Unterer	Inferiore	Inferior	Nedre
MAKE FROM, MF MARKED	Make from Marked	Faireavec Marqué	Herstellen von Markiert	Fabbricare da Contrassegnato	Hacer de Marcado	Tillverka av Märkt

TX1007193

0001-7

350D/400D ARTICULATED DUMP TRUCK (DAVENPORT SN 608490-) (NON DAVENPORT SN 201812-)

REMARKS AND ABBREVIATIONS

TX1007195

-UN-04MAY06

PHRASE	ENGLISH	FRANCAIS	DEUTSCH	ITALIANO	ESPAÑOL	SVENSKA
MATCHED SET	Matched set	Ensemble assorti	Passender Satz	Set abbinato	Sistema emparejado	Anpassad sats
MFWD	Mechanical Front-Wheel Drive	Pont Avant	Allradantrieb	Ruota Motrice Meccanica Anteriore	Traccion Delantera Mecanica	Mekanisk Framhjulsdrift
NA, NOT USED THIS APPL	Not used this application	Ne sert pas pour cette application	In dieser Anwendung nicht benutzt	Non usato in questa applicazione	No se usa en esta aplicación	Ej använd i detta sammanhang
NLA	No longer available	Epuisé	Nicht mehr lieferbar	Non più disponibile	Descontinuado	Ej längre tillgänglig
NSEP	Not supplied separately	Non livré séparément	Nicht einzeln lieferbar	Non fornito separatamente	No se suministra por separado	Kan ej erhållas separat
OD	Outside diameter	Diamètre extérieur	Außendurchmesser	Diametro esterno	Diá. exterior	Ytterdiameter
OPTIONAL	Optional	En option	Wahlweise	Opzionale	Opcional	Valfri
OR	Or	Ou	Oder	Oppure	O	Eller
ORD, ORDER	Order	Commander	Bestellen	Ordinare	Pídase	Order
OS	Oversize	Sur-dimension	Übergröße	Maggiorato	Sobretamaño	Överdimension
OUTER	Outer	Externe	Äußerer	Esterno	Externo	Yttre, utvändig
PKG, PACKG	Package, Packet of	Emballage, paquet de	Verpackung, verpackt mit	In confezione da	Paquete de	I sats; paket
PTO	Power Take Off	Prise De Force	Zapfwelle	Presa Di Forza	Toma De Fuerza	Kraftuttag
RATIO	Ratio	Rapport	Übersetzungsverhältnis	Rapporto	Índice	Förhållande
REAR	Rear	Arrière	Hinten	Posteriore	Trasero	Bak; bakre
REMAN	Remanufactured	Echange Standard	Generalveberholt	Refatto	Refabricador por	Renoverad
REPL	Replaces	Remplace	Ersetzt	Sostituisce	Sustituye	Ersätter
RH	Right-hand	Droit	Rechts	Destra	Derecha	Höger
SN	Serial number	Numéro de série	Seriennummer	Numero di serie	Nº de serie	Seriennummer
STD	Standard	Standard	Standard	Standard	Normal	Standard
SUB	Replaced by	Remplacé par	Ersetzt durch	Sostituito da	Sustituido por	Ersatt med
SUB COMPONENTS	Substitute components (of the kit or assy)	Substituer les composants (du kit ou de l'ensemble)	Komponenten ersetzen (des Kits oder der Baugruppe)	Sostituire i componenti (del kito del gruppo)	Sustituir los componentes	Ersätta komponenterna (i satsen eller monteringen)
SUB FOR	Substitutes for	Remplace	Ersatz für	Sostituisce	Sustitución para	Ersätter
TEETH, Z	Number of gear teeth	Nombre de dents d'engrenages	Zahl der Zahnradzähne	Numero di denti dell'ingranaggio	Nº de dientes de engranaje	Antal redskapständer
TK	Thickness	Épaisseur	Stärke	Spessore	Espesor	Tjocklek
UP, UPPER	Upper	Supérieur	Oberer	Superiore	Superior	Övre
US	Undersize	Sous-dimension	Untergröße	Minorato	Subtamaño	Underdimension
USE WITH	Use with	À utiliser avec	Verwenden mit	Usare con	Usar con	Använd med
USE UNTIL EXHAUSTED	Use until exhausted	Utilisation jusqu'à épuisé	Verwenden, bis erschöpft	Usare fino all'esaurimento	Usar hasta agotar	Använda till uttömd
W/	With	Avec	Mit	Con	Con	Med; inklusive
W/O	Without	Sans	Ohne	Senza	Sin	Utan; exklusive
WHOLE GOODS	Whole goods	Marchandises entières	Vollständige Waren	Merci intere	Mercancías enteras	Hela varor
XLT	Extra Long Track	Chenille Extra Longue	Mit Extra Langem Laufwerk	Cingolo Extra Lungo	Cadena Extra Larga	Extra Laangt Larvband
VEC	Vehicle Electronic Controller	Controlleur Electronique Du Vehicule	Elektronisches Steuergeraet Des Fahrzeugs	Unità Di Comando Elettronica Del Veicolo	Unidad de Control Electronico del Vehiculo	Elektronisk Fordonsstyrenhet
VLC	Vehicle Load Center	Coffret De Repartition Du Vehicule	Verteilerstation Des Fahrzeugs	Centro Di Carico Del Veicolo	Centro De Cargas Del Vehiculo	Fordonets Eicentral

TX1007195

0001-8

350D/400D ARTICULATED DUMP TRUCK (DAVENPORT SN 608490-) (NON DAVENPORT SN 201812-)

ALPHABETICAL INDEX

PAGE

PAGE

A

A/C BLOWER FAN.....	1832-6
A/C COMPRESSOR.....	1832-8
A/C COMPRESSOR DRIVE BELT.....	0429-2
A/C COMPRESSOR PULLEY KIT.....	1832-8
A/C COMPRESSOR SERVICE KIT.....	1832-8
A/C COMPRESSOR SUPPORTS.....	1832-8
A/C CONTROL VALVE.....	1832-6
A/C CORE.....	1832-6
A/C EVAPORATOR.....	1832-6
A/C EXPANSION VALVE.....	1832-6
A/C SWITCH.....	1832-6
A/C WIRE HARNESS.....	1832-6
AC CONTROL, SEALED SWITCH MODULE.....	1600-2
AC DUCTS, FRONT WINDOW.....	1832-10
ACCELERATOR PEDAL,ENGINE SPEED CONTROL.....	1600-2
ACCUMULATOR LINES AND HOSES, FRONT CHASSIS.....	2163-2
ACCUMULATOR,HYDRAULIC CALIPER BRAKE LINE (350D).....	1063-8
ACCUMULATOR,HYDRAULIC OIL MANIFOLD BLOCK.....	2162-2
ACCUMULATOR,WET DISC BRAKE HYDRAULIC OUL.....	1063-2
ACCESS DOOR,HVAC SYSTEM.....	1813-4
ACTUATOR,PARK BRAKE.....	1111-4
ADAPTER (AIR INTAKE SYSTEM).....	0521-2
ADAPTER AND WEAR PLATE, TRANSMISSION.....	0342-2
ADJUSTERS, GEARS AND RETAINERS (FRONT AND REAR AXLE DIFFERENTIAL).....	0210-2
ADM MODULE, ENGINE.....	1600-4
AIR CLEANER.....	0521-4
AIR COMPRESSOR.....	2261-2
AIR COMPRESSOR CONNECTING ROD.....	2261-2
AIR COMPRESSOR CRANKSHAFT.....	2261-2
AIR COMPRESSOR REPAIR KIT.....	2261-2
AIR CONDITIONER HOSES AND CONDENSER.....	1833-2
AIR CONDITIONING RECEIVER-DRYER.....	1832-2
AIR CONDITIONING REFRIGERANT HOSES.....	1832-2
AIR DRYER,PNEUMATIC.....	2263-9A
AIR DUCTS,CAB HVAC.....	1832-4
AIR FILTER, CAB.....	1832-6
AIR HEATER ELECTRICAL COMPONENTS, ENGINE.....	1678-2
AIR HORN.....	2263-2
AIR HOSE, REAR CHASSIS.....	2263-10
AIR INTAKE SYSTEM.....	0521-2
AIR RESTRICTION INDICATOR (AIR INTAKE SYSTEM).....	0521-2
ALARM, BACK-UP.....	1673-2
ALARM,BACK UP.....	1600-2
ALLISON TRANSMISSION CONTROLLER PANEL.....	1813-8
ALTERNATOR.....	0423-4
ALTERNATOR BRUSH SET.....	0423-4
ALTERNATOR DRIVE BELT.....	0429-2
ALTERNATOR FAN.....	0423-4
ALTERNATOR PULLEY.....	0423-4
ALTERNATOR SERVICE KIT.....	0423-4
ALTERNATOR SUPPORT AND HARDWARE.....	0423-6
AM/FM RADIO.....	2001-4
ANTENNA,RADIO.....	2001-4
ANTI SKID PAD,FUEL TANK.....	0564-2
ANTI-SKID STEP PADS,HYDRAULIC OIL TANK.....	2164-2
ARM REST,SEAT.....	1821-8
ARM, REAR SUSPENSION.....	0242-24
ARM, TAILGATE.....	1741-22
ARM, WINDOW WIPER.....	1814-2
ARM,FRONT SUSPENSION.....	0265-2

ARMS (AXLE TO CHASSIS) (REAR SUSPENSION LINKS).....	0242-22
ARTICULATION BUMP STOP PAD (FRONT MAIN FRAME/GUARDS).....	1741-2
ARTICULATION JOINT ASSEMBLY.....	1741-16
ARTICULATION JOINT PIN.....	1741-16
ARTICULATION VALVE AND LINES.....	2160-2
ARTICULATION WIRING HARNESS.....	1674-6
ASHTRAY.....	1813-10
ASSEMBLY,CAB.....	1813-22
AUTO BIN TIP CONTROL, SEALED SWITCH MODULE.....	1600-2
AUXILLARY STEERING PUMP.....	2163-3A
AUXILLARY STEERING PUMP.....	2163-11C
AXLE ASSEMBLY,FRONT WITH DIFFERENTIAL PLANETARY AND DRY DISC BRAKES(350D).....	0242-2
AXLE ASSEMBLY,FRONT,WITH DIFF.PLANETARY AND WET DISC BRAKES (350D)(400D).....	0242-4
AXLE ASSEMBLY,MID (WITH DRY DISC BRAKES)(350D).....	0242-10
AXLE ASSEMBLY,MID WITH DIFF.PLANETARY AND WET DISC BRAKES(350D)(400D).....	0242-6
AXLE ASSEMBLY,MID WITH DIFF.PLANETARY AND WET DISC BRAKES(350D)(400D).....	0242-8
AXLE ASSEMBLY,REAR (WITH DRY DISC BRAKES)(350D).....	0242-14
AXLE ASSEMBLY,REAR (WITH WET DISC BRAKES)(350D)(400D).....	0242-12
AXLE DIFFERENTIAL LOCK CONTROL, SEALED SWITCH MODULE.....	1600-2
AXLE TO CHASSIS ARMS (REAR SUSPENSION LINKS).....	0242-22

B

BACK UP ALARM.....	1600-2
BACK-UP ALARM.....	1673-2
BACKREST CUSHION.....	1821-8
BALANCER,BATTERY.....	1600-4
BATTERY.....	1671-2
BATTERY BALANCER.....	1600-4
BATTERY BOX.....	2164-2
BATTERY BOX DOOR.....	2164-2
BATTERY CABLE.....	1671-2
BATTERY DISCONNECT SWITCH.....	1671-2
BATTERY HOLD-DOWN.....	1671-2
BATTERY MICROPROCESSOR.....	1600-4
BATTERY TRAY.....	1671-2
BATTERY, EXTRA.....	1671-4
BEAM, WALKING (REAR SUSPENSION).....	0242-24
BEARING CUPS/CONES (FRONT AND REAR AXLE DIFFERENTIAL).....	0210-2
BEARING CUPS/CONES AND HOUSING (MID AXLE DIFFERENTIAL).....	0210-6
BEARING, GEARS AND TRANSFER CASE OUTPUT SHAFT (REAR).....	0851-8
BEARING, START MOTOR.....	0422-2
BEARING, THRUST (TRANSMISSION SHAFT).....	0351-2
BEARING,FRONT SUSPENSION.....	0265-2
BEARING,PIVOT (TAILGATE KIT).....	1741-22
BEARING,TRANSFER CASE IDLER SHAFT.....	0851-4
BEARINGS (ROD), CRANKSHAFT AND GEAR.....	0401-2
BEARINGS AND GASKETS (TRANS PINION CARRIER P3 W/RETARDER).....	0351-10
BEARINGS(MAIN), CRANKSHAFT AND GEAR.....	0401-2

000I-10

350D/400D ARTICULATED DUMP TRUCK (DAVENPORT SN 608490-) (NON DAVENPORT SN 201812-)

ALPHABETICAL INDEX - CONTINUED

	PAGE		PAGE
CAB DOOR HINGE	1813-6	CARRIER, TRANSMISSION PLANET PINION P3	
CAB DOOR INTERIOR PANEL	1813-6	W/RETARDER	0351-10
CAB DOOR INTERIOR PANEL	1813-10	CARRIER, TRANSMISSION PLANET PINION P3	
CAB DOOR LATCH	1813-6	W/RETARDER (CONTINUED)	0351-12
CAB DOOR WINDOW PANE	1813-6	CASE DRAIN AND RETURN HYD. LINES/HOSES	2163-8
CAB DOOR WINDOW RETAINER	1813-6	CASE DRAIN AND RETURN HYD. LINES/HOSES	2163-9A
CAB DOOR WINDOW SEALS	1813-6	CASE DRAIN AND RETURN LINES MANIFOLD	2163-8
CAB DOOR WINDOW SLIDER	1813-6	CASE DRAIN AND RETURN LINES MANIFOLD	2163-9A
CAB FENDER (L.H.)	1741-12	CATCH, CAB WINDOW	1813-20
CAB FENDER (R.H.)	1741-10	CATCH,HOOD(S/N XXXXXX-)	1911-8
CAB FIRE WALL ISOLATOR	1813-12	CATCH,HOOD(S/N-XXXXXX)	1911-6
CAB HANDRAIL	1813-12	CCU, COMPUTER CONTROL UNIT	1600-4
CAB HANDRAIL (L.H.)	1741-12	CHAIN, TAILGATE	1741-22
CAB HANDRAIL (R.H.)	1741-10	CHASSIS WIRING HARNESS	1674-6
CAB HEAT SHIELD	1741-8	CIGAR LIGHTER	1600-4
CAB HVAC AIR DUCTS	1832-4	CIRCUIT BREAKER	1600-2
CAB HVAC ASSEMBLY	1832-4	CIRCUIT BREAKER PANEL	1600-2
CAB HVAC HOSES	1832-4	CIRCUIT BREAKERS	1671-2
CAB HVAC LOUVERS	1832-4	CIRCUIT BREAKERS,CAB POWER WIRING	
CAB HYDRAULIC TILT CYLINDER	2160-10	HARNESS	1674-10
CAB HYDRAULIC TILT CYLINDER		CLAMP (OIL PAN/PUMP INTAKE)	0407-2
REPAIR KIT	2160-10	CLAMP MOUNTING PLATE, FIREWALL	1741-4
CAB INTERIOR PANELS (1)	1813-8	CLAMP,BIN TIP CYLINDER	2163-16
CAB INTERIOR PANELS (2)	1813-10	CLAMPS AND HARDWARE, CAB	1741-8
CAB INTERIOR TRIM	1813-16	CLAMPS AND HARDWARE, FRONT MAIN FRAME	1741-4
CAB LIFT PUMP DRIP TRAY		CLAMPS AND HARDWARE, REAR FRAME	1741-6
(S/N XXXXXX-)	1911-8	CLAMPS,BIN TIP HYD.HOSES	2163-6
CAB LIFT PUMP DRIP TRAY		CLEANER, AIR	0521-4
(S/N-XXXXXX)	1911-6	CLUTCH HOUSING, TRANSMISSION	0341-2
CAB POWER WIRING HARNESS	1674-10	CLUTCH, ROTATING (TRANSMISSION C1, C2)	0352-2
CAB POWER WIRING HARNESS CIRCUIT		COLD START AND ELECTRICAL EQUIPMENT	1674-2
BREAKERS	1674-10	COLD START CONTROL BOX	1600-4
CAB REAR PANEL	1813-12	COLD START MODULE	1674-2
CAB REAR WINDOW GUARD	1813-12	COLD START MODULE	
CAB ROPS LABEL	1813-22	(ELECTRICAL EQUIPMENT AND COLD START)	1674-2
CAB SEALED SWITCH MODULE	1600-2	COLD START SWITCH	1674-2
CAB STEPS (L.H.)	1741-12	COLD START, ENGINE AIR HEATER	
CAB STEPS (R.H.)	1741-10	ELECTRICAL COMPONENTS	1678-2
CAB TILT CYLINDER HYD.HOSES	2160-8	COMPARTMENT LID, CAB	1813-8
CAB TILT HYD.PUMP	2160-8	COMPLETE A20V HYDRAULIC PUMP	2161-2
CAB TILT HYD.PUMP REPAIR KIT	2160-8	COMPLETE ENGINE	0540-2
CAB TILT LATCH	2160-8	COMPLETE SEAT ASSEMBLY	1821-8
CAB TILT MOUNTING BRACKETS	1813-12	COMPRESSED AIR RESERVOIR HOSES	2263-4
CAB TRANSMISSION WIRING HARNESS	1674-8	COMPRESSED AIR DRYER	2263-6
CAB WINDOW LATCHES	1813-20	COMPRESSED AIR DRYER	2263-8
CAB WINDOWPANES	1813-2	COMPRESSED AIR DRYER HOSES	2263-6
CAB WIRING HARNESS	1600-2	COMPRESSED AIR DRYER RESERVOIR	2263-6
CABLE, BATTERY	1671-2	COMPRESSED AIR FILTER ELEMENT	2263-8
CABLE, GROUND (FRONT CHASSIS)	1674-4	COMPRESSED AIR RESERVOIR	2263-4
CABLES,EXTRA BATTERY	1671-4	COMPRESSED AIR RESERVOIR	2263-8
CABLES,EXTRA BATTERY	1671-6	COMPRESSOR, A/C	1832-8
CALIPER ASSEMBLY,FRONT AXLE DISC BRAKE		COMPRESSOR,AIR	2261-2
(350D)(WITH DRY DISK BRAKE)	1011-8	CONDENSER, AIR CONDITIONER	1833-2
CALIPER ASSEMBLY,SERVICE BRAKE(350D)		CONNECTING ROD,AIR COMPRESSOR	2261-2
(WITH DRY DISC BRAKE)	1011-20	CONNECTING ROD,ENGINE	0403-2
CALIPER,PARK BRAKE	1111-6	CONNECTORS AND TERMINALS (TRANS. CONTROL	
CAM FOLLOWER, PUSHRODS AND CAMSHAFT		VALVE, WIRING HARNES/ELECT. COMP)	0362-2
W/GEAR	0402-2	CONNECTORS, RINGS, VALVES AND FUEL LINES	0563-2
CAMSHAFT BEARINGS	0404-4	CONNECTORS, WIRING HARNESS ELECTRICAL	1674-12
CAMSHAFT WITH GEAR, FOLLOWERS/PUSHRODS	0402-2	CONNECTORS, WIRING HARNESS ELECTRICAL	1674-14
CAMSHAFT, SPEED CRANK SENDER	1678-2	CONNECTORS, WIRING HARNESS ELECTRICAL	1674-16
CANSHAFT BEARINGS	0404-2	CONNECTORS, WIRING HARNESS ELECTRICAL	1674-18
CAP,FUEL TANK FILLER	0564-2	CONNECTORS, WIRING HARNESS ELECTRICAL	1674-20
CAP,RADIATOR COOLANT		CONNECTORS, WIRING HARNESS ELECTRICAL	1674-22
EXPANSION TANK	0511-6	CONTROL BLOCK,PNEUMATIC	2263-2
CARRIER P2, TRANSMISSION PLANET PINION	0351-8	CONTROL MODULE, SPEED	1678-2
CARRIER, TRANSMISSION PLANET PINION (P1)	0351-6	CONTROL VALVE, STEERING	0962-2

000I-12

350D/400D ARTICULATED DUMP TRUCK (DAVENPORT SN 608490-) (NON DAVENPORT SN 201812-)

ALPHABETICAL INDEX - CONTINUED

	PAGE		PAGE
DISC BRAKE HOUSING,LH FRONT & RH MID		ELECTRICAL CONNECTORS, WIRING HARNESS.....	1674-20
AXLE WET DISC BRAKE	1011-4	ELECTRICAL CONNECTORS, WIRING HARNESS.....	1674-22
DISC BRAKE KIT,MIDDLE AND REAR AXLE		ELECTRICAL EQUIPMENT AND COLD START.....	1674-2
(WITH DRY DISC BRAKE).....	1011-10	ELECTRONIC FUEL INJECTOR UNIT.....	0413-2
DISC BRAKE LINES,FRONT AXLE(350D)		ELECTRONIC MODULE.....	1600-4
(WITH DRY DISC BRAKE).....	1011-8	ELECTRONIC MODULE, TCU.....	1674-8
DISC BRAKE LINES,MIDDLE AND REAR AXLE		ELEMENT (AIR CLEANER).....	0521-4
(WITH DRY DISC BRAKE)(350D).....	1011-10	ELEMENT,COMPRESSED AIR FILTER.....	2263-8
DISC BRAKE PAD WEAR INDICATOR,MIDDLE AND		ELEMENT,FINAL FUEL FILTER.....	0420-2
REAR AXLE(WITH DRY DISC BRAKE)(350D).....	1011-10	ELEMENT,PRIMARY FUEL FILTER.....	0420-4
DISC BRAKE PISTON,LH FRONT & RH MID		ENGINE ADM MODULE.....	1600-4
AXLE WET DISC BRAKE	1011-4	ENGINE AIR INTAKE TEMPERATURE SENSOR.....	0414-2
DISCONNECT SWITCH,BATTERY.....	1671-2	ENGINE AIR PRESSURE SENSOR.....	0414-2
DISKS (TRANSMISSION WEAR PLATE/ADAPTER).....	0342-2	ENGINE BLOCK DRAIN VALVE.....	0540-2
DISKS (W/INNER AND OUTER SPLINES)		ENGINE COMPARTMENT GRILLE.....	1921-2
(TRANS. ROTATING CLUTCH C1, C2).....	0352-2	ENGINE COMPARTMENT GRILLE FRAME.....	1921-2
DISKS (W/INNER AND OUTER SPLINES)		ENGINE COMPARTMENT HOOD.....	1911-2
(TRANSMISSION CLUTCH HOUSING).....	0341-2	ENGINE COMPARTMENT HOOD BRACKET.....	1911-4
DISKS, PLATES AND GEARS		ENGINE COMPARTMENT HOOD HANDLE.....	1911-2
(FRONT AND REAR AXLE DIFFERENTIAL).....	0210-4	ENGINE COMPARTMENT HOOD SEAL.....	1911-4
DISKS,MID AXLE DIFFERENTIAL.....	0210-8	ENGINE COMPARTMENT HOOD SUPPORT CYLINDER.....	1911-2
DOOR INTERIOR PANEL, CAB.....	1813-10	ENGINE CONNECTING ROD.....	0403-2
DOOR LATCH, CAB.....	1813-6	ENGINE CONTROL UNIT.....	1678-2
DOOR LATCH,HYDRAULIC OIL TANK COVER.....	2164-4	ENGINE COOLANT LEVEL SENDER.....	1673-4
DOOR,BATTERY BOX.....	2164-2	ENGINE COOLANT TEMPERATURE SENDER.....	0419-2
DOOR,CAB.....	1813-6	ENGINE CYLINDER BLOCK COOLANT	
DOOR,HYDRAULIC OIL TANK.....	2164-2	HEATER HOSES.....	0505-2
DRAIN PLUG (TRANS. PLANET PINION CARRIER		ENGINE CYLINDER BLOCK COOLANT HEATER.....	0505-2
(P3) W/RETARDER (CONTINUED).....	0351-12	ENGINE CYLINDER BLOCK HEATER KIT.....	0505-2
DRAIN VALVE,ENGINE BLOCK.....	0540-2	ENGINE DRIVE BELT.....	0429-2
DRIP TRAY,CAB LIFT PUMP		ENGINE EXHAUST BRAKE HOSES.....	0410-6
(S/N XXXXXX-).....	1911-8	ENGINE EXHAUST BRAKE PIPE.....	0410-6
DRIP TRAY,CAB LIFT PUMP		ENGINE EXHAUST PIPES.....	0531-2
(S/N-XXXXXX).....	1911-6	ENGINE EXHAUST STACK SHIELD.....	0531-2
DRIVE BELT TIGHTENER.....	0429-2	ENGINE EXHAUST VALVE.....	0409-4
DRIVE BELT,A/C COMPRESSOR.....	0429-2	ENGINE FAN BLADE.....	0510-2
DRIVE BELT,ALTERNATOR.....	0429-2	ENGINE FAN DRIVE PULLEY.....	0510-2
DRIVE BELT,WATER PUMP.....	0429-2	ENGINE INTAKE VALVE.....	0409-4
DRIVE SHAFT GUARDS.....	0225-7	ENGINE LIFTING BRACKETS.....	0540-4
DRIVE SHAFT,FRONT.....	0225-1	ENGINE MOUNTING BRACKET.....	0540-2
DRIVE SHAFT,FRONT AND REAR WHEEL.....	0225-5	ENGINE MOUNTING ISOLATOR.....	0540-2
DRIVE SHAFT,HYD.OIL COOLER DRIVE MOTOR.....	2267-2	ENGINE OIL COOLER.....	0419-2
DRIVE SHAFT,HYD.PUMP.....	0225-1	ENGINE OIL COOLER FILTER.....	0419-2
DRIVE SHAFT,HYDRAULIC PUMP.....	0225-6	ENGINE OIL COOLER HOUSING.....	0419-2
DRIVE SHAFT,MID REAR.....	0225-1	ENGINE OIL FILLER CAP.....	0409-2
DRIVE SHAFT,MID UNIVERSAL.....	0225-4	ENGINE OIL PRESSURE SENDER.....	0419-2
DRIVE SHAFT,MID UNIVERSAL.....	0225-8	ENGINE OIL PUMP/PRESSURE RELIEF VALVE.....	0407-4
DRIVE SHAFT,REAR.....	0225-1	ENGINE OVERSPEED WIRE HARNESS.....	1674-10
DRIVE SHAFT,REAR UNIVERSAL.....	0225-3	ENGINE PISTON.....	0403-2
DRIVESHAFT,FRONT UNIVERSAL.....	0225-2	ENGINE PISTON AND CYL.LINER KIT.....	0403-2
DRYER,COMPRESSED AIR.....	2263-6	ENGINE PISTON RING KIT.....	0403-2
DRYER,COMPRESSED AIR.....	2263-8	ENGINE SPEED CONTROL ACCELERATOR PEDAL.....	1600-2
DUCTS, FRONT WINDOW HVAC.....	1832-10	ENGINE WATER PUMP.....	0417-2
DUST BOWL (AIR INTAKE SYSTEM).....	0521-2	ENGINE WIRE HARNESS.....	1673-4
		ENGINE WIRING HARNESS.....	1678-2
		ENGINE WIRING HARNESS	
		(ELECTRICAL EQUIPMENT AND COLD START).....	1674-2
		ENGINE COMPLETE.....	0540-2
		ENIGINE COLD START TEMPERATURE	
		SWITCH.....	0404-4
		EVAPORATOR,A/C.....	1832-6
		EXHAUST BRAKE CYLINDER WITH	
		THROTTLE HOUSING.....	0410-4
		EXHAUST BUTTERFLY KIT.....	0410-4
		EXHAUST MANIFOLD.....	0410-2
		EXHAUST PIPE,BIN BODY HEATER.....	0531-6
		EXHAUST PIPE,TURBOCHARGER.....	0416-2

E

000I-13

350D/400D ARTICULATED DUMP TRUCK (DAVENPORT SN 608490-) (NON DAVENPORT SN 201812-)

ALPHABETICAL INDEX - CONTINUED

	PAGE		PAGE
EXHAUST SHIELD BRACKETS.....	0531-4	FLASHING BEACON BRACKET.....	2004-4
EXHAUST SHIELD,TURBOCHARGER.....	0531-4	FLASHING BEACON SWITCH.....	2004-4
EXHAUST SYSTEM SHIELDS.....	0531-4	FLASHING BEACON WIRE HARNESS.....	2004-4
EXHAUST VALVE,ENGINE.....	0409-4	FLASHING BEACON WIRING KIT.....	2004-4
EXPANSION TANK,RADIATOR COOLANT.....	0511-6	FLOODLIGHT, REAR.....	1673-8
EXPANSION VALVE,A/C.....	1832-6	FLOORMAT, CAB.....	1813-16
EXTINGUISHER, FIRE.....	2003-2	FLYWHEEL.....	0401-2
EXTRA BATTERY.....	1671-4	FOLLOWERS, PUSHRODS AND CAMSHAFT W/GEAR.....	0402-2
EXTRA BATTERY CABLES.....	1671-4	FRAME AND GUARDS, FRONT MAIN.....	1741-2
EXTRA BATTERY CABLES.....	1671-6	FRAME, REAR.....	1741-18
EXTRA BATTERY HOLD-DOWN.....	1671-4	FRAME, TAILGATE.....	1741-22
EXTRA BATTERY KIT.....	1671-6	FRAME, TRANSMISSION CONTROL SUPPORT.....	1674-8
		FRAME,ENGINE COMPARTMENT GRILLE.....	1921-2
F		FRAME,HOOD SUPPORT(S/N XXXXXX-).....	1911-8
FAN BLADE,ENGINE.....	0510-2	FRAME,HOOD SUPPORT(S/N-XXXXXX).....	1911-6
FAN DRIVE MODULE.....	1674-6	FRAME, OCCILLATION.....	1741-14
FAN DRIVE MOTOR, VALVES, LINES, AND HOSES.....	2163-4	FRONT AND REAR AXLE DIFFERENTIAL.....	0210-2
FAN DRIVE PULLEY.....	0510-2	FRONT AND REAR AXLE DIFFERENTIAL.....	0210-4
FAN MOTOR,HYD.OIL COOLER.....	2267-2	FRONT AND REAR AXLE RING GEAR AND PINION.....	0210-2
FAN SHROUD.....	0511-2	FRONT AND REAR WHEEL DRIVESHAFT ASSEMBLY.....	0225-5
FAN SHROUD,RADIATOR.....	0511-2	FRONT AND REAR WHEELDRIVESHAFT U-JOINT.....	0225-5
FAN SPEED CONTROL, HVAC (SEALED SWITCH MODULE).....	1600-2	FRONT AXLE ASSEMBLY WITH DIFF, PLANETARY AND WET DISC BRAKES(350D)(400D).....	0242-4
FAN,ALTERNATOR.....	0423-4	FRONT AXLE ASSEMBLY WITH DIFFERENTIAL, PLANETARY AND DRY DISC BRAKES(350D).....	0242-2
FAN,TRANSMISSION OIL COOLER.....	0364-2	FRONT AXLE DIFFERENTIAL (DRY DISC BRAKES)(350D).....	0242-2
FENDER,CAB (L.H.).....	1741-12	FRONT AXLE DIFFERENTIAL(WITH WET DISC BRAKES)(350D)(400D).....	0242-4
FENDER,CAB (R.H.).....	1741-10	FRONT AXLE DISC BRAKE ASSEMBLY (WITH WET DISC BRAKES)(350D)(400D).....	0242-4
FILLER CAP,ENGINE OIL.....	0409-2	FRONT AXLE DISC BRAKE CALIPER ASSEMBLY (350D)(WITH DRY DISC BRAKE).....	1011-8
FILTER ELEMENT WET DISC BRAKE HYDRAULIC OIL RESERVOIR.....	1063-4	FRONT AXLE DISC BRAKE GUARD(350D) (WITH DRY DISC BRAKE).....	1011-8
FILTER ELEMENT,HYDRAULIC OIL TANK.....	2164-4	FRONT AXLE DISC BRAKE LINES(350D) (WITH DRY DISC BRAKE).....	1011-8
FILTER ELEMENT,PNEUMATIC AIR DRYER.....	2263-9A	FRONT AXLE HOUSING (DRY DISC BRAKES)(350D).....	0242-2
FILTER ELEMENT,TRANSFER CASE HOUSING.....	0841-4	FRONT AXLE HOUSING (WITH WET DISC BRAKES)(350D)(400D).....	0242-4
FILTER ELEMENT,WET DISC BRAKE OIL RESERVOIR.....	1064-4	FRONT AXLE HOUSING SHAFT (DRY DISC BRAKES)(350D).....	0242-2
FILTER/FILTER ELEMENT (AIR CLEANER).....	0521-4	FRONT AXLE HOUSING SHAFT (WITH WET DISC BRAKES)(350D)(400D).....	0242-4
FILTER, FINAL FUEL.....	0420-2	FRONT AXLE PLANETARY DRIVE ASSEMBLY (WITH WET DISC BRAKES)(350D)(400D).....	0242-4
FILTER, PRIMARY FUEL.....	0420-4	FRONT AXLE SUSPENSION STRUT CYLINDER.....	0265-4
FILTER,ENGINE OIL COOLER.....	0419-2	FRONT AXLE SUSPENSION STRUT CYLINDER SEAL KIT.....	0265-4
FILTER,WET DISC BRAKE HYDRAULIC OIL RESERVOIR.....	1063-2	FRONT AXLE WET DISC BRAKE ASSEMBLIES.....	1011-14
FILTER,WET DISC BRAKE OIL RESERVOIR.....	1064-2	FRONT AXLE WET DISC BRAKE BRAKE LINES.....	1011-14
FILTERS (OIL) AND VALVE SPOOLS.....	0362-4	FRONT AXLE WET DISC BRAKE LINE GUARDS.....	1011-14
FILTERS,HYDRAULIC OIL TANK.....	2164-4	FRONT CHASSIS ACCUMULATOR LINES AND HOSES.....	2163-2
FINAL DRIVE KIT,REAR AXLE (WITH DRY DISC BRAKES)(350D).....	0242-20	FRONT CHASSIS LUBE LINES.....	2000-4
FINAL DRIVE KIT,WET DISC BRAKE (350D)(400D).....	0242-16	FRONT COVER,CYLINDER BLOCK.....	0404-4
FINAL DRIVE KIT,WET DISC BRAKE (350D)(400D).....	0242-18	FRONT DRIVE SHAFT.....	0225-1
FINAL FUEL FILTER.....	0420-2	FRONT DRIVESHAFT U-JOINT.....	0225-2
FINAL FUEL FILTER ELEMENT.....	0420-2	FRONT INTERIOR PANEL.....	1813-8
FIRE EXTINGUISHER.....	2003-2	FRONT MAIN FRAME AND GUARDS.....	1741-2
FIREWALL CLAMP MOUNTING PLATE.....	1741-4	FRONT MAIN FRAME CLAMPS AND HARDWARE.....	1741-4
FIREWALL HVAC DUCTS.....	1832-10	FRONT MUD GUARD.....	1741-10
FITTING AND GASKET (ENGINE OIL PUMP AND PRESSURE RELIEF VALVE).....	0407-4	FRONT MUD GUARD.....	1741-12
FITTING AND PLUG (INTAKE OIL PAN/PUMP).....	0407-2	FRONT SUPPORT HOUSING, TRANSMISSION.....	0361-2
FITTINGS (CYLINDER HEAD LINES).....	0409-6	FRONT SUSPENSION.....	0265-2
FITTINGS,MANUAL GREASING.....	2000-2		
FITTINGS,STEERING CYLINDER HOSE.....	0965-2		
FLANGE (POWER TAKE OFF).....	4051-2		
FLANGE, TRANSMISSION MOUNTING.....	0342-4		
FLANGE, WHEEL.....	0110-2		

0001-14

350D/400D ARTICULATED DUMP TRUCK (DAVENPORT SN 608490-) (NON DAVENPORT SN 201812-)

ALPHABETICAL INDEX - CONTINUED

	PAGE		PAGE
FRONT SUSPENSION ARM.....	0265-2	GEARS, RETAINERS AND ADJUSTERS	
FRONT SUSPENSION BEARING.....	0265-2	(FRONT AND REAR AXLE DIFFERENTIAL).....	0210-2
FRONT UNIVERSAL DRIVE SHAFT GUARD.....	0225-2	GEARS,MID AXLE DIFFERENTIAL.....	0210-8
FRONT UNIVERSAL DRIVESHAFT.....	0225-2	GEARS,TRANSFER CASE INPUT SHAFT.....	0851-2
FRONT WINDOW DEFOG DUCTS.....	1832-10	GEARS,TRANSFER CASE OUTPUT SHAFT.....	0851-6
FRONT WORK LIGHT.....	1673-6	GLASS, CAB.....	1813-2
FRONT WORK LIGHT WIRE HARNESS.....	1673-6	GLASS,REAR VIEW MIRROR REPLACEMENT.....	2002-6
FUEL COOLER.....	1678-2	GREASING DECAL,PROPSHAFT GUARD.....	0225-7
FUEL FILTER,FINAL.....	0420-2	GRILLE, ENGINE COMPARTMENT.....	1921-2
FUEL FILTER,PRIMARY.....	0420-4	GROMMETS (TRANS. CONTROL VLV., WIRING	
FUEL FIRED HEATER ELECTRICAL COMPONENTS.....	1678-2	HARNNESS/ELECTRICAL COMPONENTS).....	0362-2
FUEL GAUGE SENDER UNIT.....	0564-2	GROUND CABLE, FRONT CHASSIS.....	1674-4
FUEL GAUGE SENDER UNIT.....	1673-4	GUARD AND COVERS	
FUEL HOSE BRACKET.....	0540-2	(TRANSMISSION OIL COOLER BOX).....	0364-4
FUEL INJECTION NOZZLE.....	0409-2	GUARD/BOOT (STEERING COLUMN AND WHEEL).....	0911-2
FUEL INJECTION NOZZLE.....	0414-2	GUARD, GREASE LINE (REAR FRAME ASSY).....	1741-18
FUEL INJECTION PUMP.....	0413-2	GUARD, STRIKER PIN (CAB DOOR LATCH).....	1813-6
FUEL INJECTOR UNIT,ELECTRONIC.....	0413-2	GUARD,CAB REAR WINDOW.....	1813-12
FUEL LINES, RINGS, VALVES AND CONNECTORS.....	0563-2	GUARD,FRONT AXLE DISC BRAKE(350D)	
FUEL PUMP,HAND OPERATED.....	0420-4	(WITH DRY DISC BRAKE).....	1011-8
FUEL RAIL.....	0563-2	GUARD,FRONT UNIVERSAL DRIVESHAFT.....	0225-2
FUEL TANK.....	0564-2	GUARD,HYDRAULIC PUMP DRIVE SHAFT.....	0225-6
FUEL TANK ACESS COVER.....	0564-2	GUARDS AND FRAME, FRONT MAIN.....	1741-2
FUEL TANK ANTI SKID PAD.....	0564-2	GUARDS, DRIVE SHAFT.....	0225-7
FUEL TANK FILLER CAP.....	0564-2	GUARDS, REAR CHASSIS LUBE LINES.....	2000-6
FUEL TANK SENDER UNIT.....	0564-2	GUARDS,MID AXLE WET DISC BRAKE LINES.....	1011-16
FUEL TEMPERATURE SENDER.....	0404-2	GUARDS,RADIATOR FAN.....	0511-2
		GUIDE,CYLINDER HEAD VALVE.....	0409-2
G		H	
GASKET KIT,CYLINDER BLOCK.....	0404-2	HAND OPERATED FUEL PUMP.....	0420-4
GASKET SET,CYLINDER HEAD.....	0409-4	HANDLE, CABINTERIOR.....	1813-10
GASKET, EXHAUST MANIFOLD.....	0410-2	HANDLE, ENGINE COMPARTMENT HOOD.....	1911-2
GASKET,CYLINDER HEAD.....	0409-2	HANDLE,SEAT SLIDE CONTROL.....	1821-8
GASKET,CYLINDER HEAD.....	0409-4	HANDLES (STEERING COLUMN AND WHEEL).....	0911-2
GASKET,INTAKE MANIFOLD.....	0414-2	HANDRAIL,CAB.....	1813-12
GASKET,ROCKER ARM COVER.....	0409-2	HANDRAIL,CAB (I.H.).....	1741-12
GASKET,TIMING GEAR COVER.....	0402-4	HANDRAIL,CAB (R.H.).....	1741-10
GASKETS (TRANS. PINION CARRIER (P3)		HANGER, CAB INTERIOR.....	1813-10
W/RETARDER (CONTINUED).....	0351-12	HARDWARE AND CLAMPS, CAB.....	1741-8
GASKETS (TRANS. PLANET PINION CARRIER P3		HARDWARE AND CLAMPS, FRONT MAIN FRAME.....	1741-4
W/RETARDER).....	0351-10	HARDWARE AND CLAMPS, REAR FRAME.....	1741-6
GASKETS AND BEARINGS		HARDWARE AND LINES (CYLINDER HEAD).....	0409-6
(TRANS PINION CARRIER P3 W/RETARDER).....	0351-10	HARDWARE AND OIL LINES (TURBOCHARGER).....	0416-4
GAUGE, HYDRAULIC OIL TANK OIL LEVEL.....	2164-4	HARDWARE AND SUPPORT (ALTERNATOR).....	0423-6
GEAR (POWER TAKE OFF).....	4051-2	HARNESS, ARTICULATION WIRING.....	1674-4
GEAR CASE,TRANSFER DRIVE.....	0841-2	HARNESS, ARTICULATION WIRING.....	1674-6
GEAR SELECTOR, REMOTE.....	1674-8	HARNESS, CAB POWER WIRING.....	1674-10
GEAR, MAIN BEARINGS AND CRANKSHAFT.....	0401-2	HARNESS, CAB TRANSMISSION WIRING.....	1674-8
GEAR, SUN (TRANS. ROTATING CLUTCH C1,		HARNESS, ENGINE POWER.....	1671-2
C2).....	0352-2	HARNESS, ENGINE WIRING.....	1674-4
GEAR, SUN (TRANSMISSION SHAFT).....	0351-2	HARNESS, FRONT CHASSIS WIRING.....	1674-4
GEAR,PINION WET DISC BRAKE FINAL		HARNESS, TRANSMISSION WIRING.....	1674-4
DRIVE KIT(350D)(400D).....	0242-16	HARNESS, TRANSMISSION, CAB.....	1674-8
GEAR,PINION WET DISC BRAKE FINAL		HARNESS,ENGINE WIRE.....	1673-4
DRIVE KIT(350D)(400D).....	0242-18	HAZARD LIGHT CONTROL, SWITCH MODULE.....	1600-2
GEAR,RING WET DISC BRAKE FINAL		HEAD AND VALVES,CYLINDER.....	0409-4
DRIVE KIT(350D)(400D).....	0242-16	HEAD LIGHT BULB.....	1673-4
GEAR,RING WET DISC BRAKE FINAL		HEAD VALVES,CYLINDER.....	0409-2
DRIVE KIT(350D)(400D).....	0242-18	HEADLIGHT.....	1673-4
GEARS (TRANS. PLANET PINION CARRIER P1).....	0351-6	HEADLIGHT ASSMELBIES.....	1673-10
GEARS, BEARINGS AND TRANSFER CASE OUTPUT		HEADLINER, FRONT/REAR	
SHAFT (REAR).....	0851-8	(ROOF INTERIOR PANELS).....	1813-14
GEARS, DISKS AND PLATES		HEADREST,SEAT.....	1821-8
(FRONT AND REAR AXLE DIFFERENTIAL).....	0210-4	HEAT SHIELD,BIN BODY EXHAUST PIPE.....	0531-6

0001-15

350D/400D ARTICULATED DUMP TRUCK (DAVENPORT SN 608490-) (NON DAVENPORT SN 201812-)

ALPHABETICAL INDEX - CONTINUED

	PAGE		PAGE
HEAT SHIELD,CAB.....	1741-8	HOUSING R.H FRONT & L.H.MID AXLE WET	
HEAT SHIELD,TRANSFER DRIVE CASE.....	0841-2	DISC BRAKE.....	1011-2
HEAT SHIELD,TURBOCHARGER.....	0416-2	HOUSING TRANSFER CASE INPUT SHAFT.....	0851-2
HEATER CONTROL, SEALED SWITCH MODULE.....	1600-2	HOUSING TRANSFER CASE OUTPUT SHAFT.....	0851-6
HEATER DUCTS, FRONT WINDOW.....	1832-10	HOUSING, LH FRONT & RH MID AXLE WET	
HEATER ELECTRICAL COMPONENTS, ENGINE AIR.....	1678-2	DISC BRAKE.....	1011-4
HEATER,ENGINE CYLINDER BLOCK COOLANT.....	0505-2	HOUSING, SHAFT AND SPACER	
HEATING ELEMENT,PNEUMATIC AIR DRYER.....	2263-9A	(FRONT AND REAR AXLE DIFFERENTIAL).....	0210-2
HINGE,CAB DOOR.....	1813-6	HOUSING, TRANSFER DRIVE GEAR CASE.....	0841-4
HOLD-DOWN, BATTERY.....	1671-2	HOUSING, TRANSMISSION CLUTCH.....	0341-2
HOLD-DOWN, EXTRA BATTERY.....	1671-4	HOUSING, TRANSMISSION CONVERTER.....	0641-2
HOLDER, SEAT MANUAL.....	1821-12	HOUSING, TRANSMISSION FRONT SUPPORT.....	0361-2
HOOD BRACKET(S/N XXXXXX-).....	1911-8	HOUSING,A20V HYDRAULIC PUMP.....	2161-2
HOOD BRACKET(S/N-XXXXXX).....	1911-6	HOUSING,CRANKCASE BREATHER.....	0402-4
HOOD BRACKET,ENGINE COMPARTMENT.....	1911-4	HOUSING,ENGINE OIL COOLER.....	0419-2
HOOD CATCH(S/N XXXXXX-).....	1911-8	HOUSING,FRONT AXLE	
HOOD CATCH(S/N-XXXXXX).....	1911-6	(DRY DISC BRAKES)(350D).....	0242-2
HOOD LATCH BRACKET.....	1911-4	HOUSING,FRONT AXLE	
HOOD SPRING(S/N XXXXXX-).....	1911-8	(WITH WET DISC BRAKES)(350D)(400D).....	0242-4
HOOD SPRING(S/N-XXXXXX).....	1911-6	HOUSING,MID AXLE	
HOOD SUPPORT FRAME (S/N XXXXXX-).....	1911-8	(WITH DRY DISC BRAKES)(350D).....	0242-10
HOOD SUPPORT FRAME (S/N-XXXXXX).....	1911-6	HOUSING,MID AXLE	
HOOD, ENGINE COMPARTMENT.....	1911-2	(WITH WET DISC BRAKES)(350D)(400D).....	0242-6
HOOK, CAB INTERIOR.....	1813-10	HOUSING,MID AXLE	
HORN.....	2004-2	(WITH WET DISC BRAKES)(350D)(400D).....	0242-8
HORN,AIR.....	2263-2	HOUSING,MID AXLE DIFFERENTIAL.....	0210-8
HORN,ELECTRIC.....	1673-4	HOUSING,PARK BRAKE.....	1111-4
HOSE, REAR CHASSIS AIR.....	2263-10	HOUSING,REAR AXLE	
HOSES, ACCUMULATOR.....	2163-2	(WITH DRY DISC BRAKES)(350D).....	0242-14
HOSES, AIR CONDITIONER.....	1833-2	HOUSING,REAR AXLE	
HOSES, CASE DRAIN AND RETURN LINES.....	2163-8	(WITH WET DISC BRAKES)(350D)(400D).....	0242-12
HOSES, CASE DRAIN AND RETURN LINES.....	2163-9A	HOUSING,REAR AXLE FINAL DRIVE	
HOSES, HYDRAULIC FAN DRIVE CONTROL		(WITH DRY DISC BRAKES)(350D).....	0242-20
MOTOR AND VALVES.....	2163-4	HOUSING,TRANSFER CASE IDLER SHAFT.....	0851-4
HOSES, STEERING VALVE.....	2160-2	HOUSINGS (TRANSMISSION CLUTCH).....	0341-2
HOSES,AIR CONDITIONING REFRIGERANT.....	1832-2	HOUSINGS, SNAP RINGS AND SHIMS	
HOSES,BREAK VALVE.....	2160-4	(FRONT AND REAR AXLE DIFFERENTIAL).....	0210-4
HOSES,CAB HVAC.....	1832-4	HVAC ACCESS DOOR CYLINDER.....	1813-4
HOSES,COMPRESSED AIR DRYER.....	2263-6	HVAC ASSEMBLY,CAB.....	1832-4
HOSES,COMPRESSED AIR RESERVOIR.....	2263-4	HVAC CONTROL, SEALED SWITCH MODULE.....	1600-2
HOSES,ENGINE CYLINDER BLOCK		HVAC DUCTS, FRONT WINDOW.....	1832-10
COOLANT HEATER.....	0505-2	HVAC SYSTEM ACCESS DOOR.....	1813-4
HOSES,ENGINE EXHAUST BRAKE.....	0410-6	HYD. OIL MANIFOLD VOAC BLOCK.....	2162-2
HOSES,HYRAULIC CALIPER BRAKE LINE		HYD.HOSE BUNDLE PROTECTION SPRING.....	2163-6
(350D).....	1063-8	HYD.HOSES,BIN CYLINDER.....	2163-6
HOSES,PNEUMATIC CONTROL BLOCK.....	2263-2	HYD.HOSES,CAB TILT CYLINDER.....	2160-8
HOSES,PRIMARY FUEL FILTER.....	0420-4	HYD.HOSES,MAIN HYD.PUMP.....	2163-10
HOSES,RADIATOR.....	0511-2	HYD.HOSES,MAIN HYD.PUMP.....	2163-11A
HOSES,RADIATOR.....	0511-4	HYD.HOSES,STEERING METERING	
HOSES,REAR CHASSIS LUBE.....	2000-6	PUMP.....	2163-10
HOSES,STEERING CYLINDER.....	0965-2	HYD.HOSES,STEERING METERING	
HOSES,TRANSMISSION OIL COOLER.....	0364-10	PUMP.....	2163-11A
HOUSING		HYD.OIL COOLER FAN MOTOR.....	2267-2
(ELECTRICAL EQUIPMENT AND COLD START).....	1674-2	HYD.OIL COOLER FAN MOTOR DRIVE SHAFT.....	2267-2
HOUSING (POWER TAKE OFF).....	4051-2	HYD.OIL LINE,BIN TIP CYLINDER.....	2163-16
HOUSING (THROTTLE) WITH EXHAUST BRAKE		HYD.OIL LINES,STEERING	
CYLINDER.....	0410-4	METERING PUMP.....	2163-10
HOUSING (TRANS. CONTROL VALVE, WIRING		HYD.OIL LINES,STEERING	
HARNES/ELECT. COMP).....	0362-2	METERING PUMP.....	2163-11A
HOUSING (TRANS. PLANET PINION CARRIER P3		HYD.OIL MANIFOLD BIN TIP SECTION.....	2162-6
W/RETARDER (CONTINUED).....	0351-12	HYD.OIL MANIFOLD SEAL KIT.....	2162-6
HOUSING (TRANSFER CASE OUTPUT SHAFT)		HYD.OIL MANIFOLD SEAL KIT.....	2162-8
(REAR).....	0851-8	HYD.OIL MANIFOLD SEAL KITS.....	2162-8
HOUSING (TRANSMISSION CONVERTER).....	0641-2	HYD.OIL MANIFOLD VALVES.....	2162-8
HOUSING (TRANSMISSION TORQUE CONVERTER).....	0351-4	HYD.OIL RESERVOIR DOOR LATCH KEY.....	2164-4
HOUSING (VALVE SPOOLS/OIL FILTERS).....	0362-4	HYD.OIL RESERVOIR OIL FILTER SEAL KIT.....	2164-4
		HYD.OIL TEMPERATURE SENDER.....	1674-6

0001-16

350D/400D ARTICULATED DUMP TRUCK (DAVENPORT SN 608490-) (NON DAVENPORT SN 201812-)

ALPHABETICAL INDEX - CONTINUED

	PAGE		PAGE
HYD.PUMP DRIVE SHAFT.....	0225-1	INTERIOR PANEL, CAB DOOR	1813-10
HYD.PUMP DRIVE SHAFT U-JOINT	0225-6	INTERIOR PANEL, FRONT	1813-8
HYD.PUMP,CAB TILT.....	2160-8	INTERIOR PANEL,CAB DOOR	1813-6
HYD.PUMP,STEERING METERING.....	2163-3A	INTERIOR PANELS, CAB (1).....	1813-8
HYD.PUMP,STEERING METERING.....	2163-11C	INTERIOR PANELS, CAB (2).....	1813-10
HYDRAULIC CALIPER BRAKE LINE (350D)	1063-8	ISOLATOR,CAB FIRE WALL	1813-12
HYDRAULIC CALIPER BRAKE LINE ACCUMULATOR (350D)	1063-8	ISOLATOR,ENGINE MOUNTING	0540-2
HYDRAULIC CALIPER BRAKE LINE HOSES (350D)	1063-8	ISOLATOR,TRANSMISSION MOUNTING.....	0364-8
HYDRAULIC HOSES,BIN TIP CYLINDER	2163-14		
HYDRAULIC HOSES,BIN TIP CYLINDER RELIEF VALVE.....	2163-18	J	
HYDRAULIC HOSES,WET DISC BRAKE	1063-4	JOINT ASSEMBLY, ARTICULATION.....	1741-16
HYDRAULIC MANIFOLD PLATES AND HARDWARE	1913-2	K	
HYDRAULIC MOTOR, VALVES AND LINES	2163-4	KEY,HYD.OIL RESERVOIR DOOR LATCH	2164-4
HYDRAULIC OIL LINES,BIN TIP CYLINDER.....	2163-14	KEY,IGNITION SWITCH	1600-2
HYDRAULIC OIL LINES,TRANSMISSION OIL COOLER	0364-10	KIT, A/C COMPRESSOR PULLEY	1832-8
HYDRAULIC OIL MANIFOLD BLOCK.....	2162-2	KIT, A/C COMPRESSOR SERVICE	1832-8
HYDRAULIC OIL MANIFOLD BLOCK.....	2162-4	KIT,AIR COMPRESSOR REPAIR	2261-2
HYDRAULIC OIL MANIFOLD BLOCK SEAL KIT.....	2162-4	KIT,ALTERNATOR SERVICE	0423-4
HYDRAULIC OIL MANIFOLD BLOCK ACCUMULATOR.....	2162-2	KIT,BIN DUMP BODY HEATER	0531-6
HYDRAULIC OIL MANIFOLD CONTROL VALVES	2162-4	KIT,BIN TIP CYLINDER REPAIR	2163-16
HYDRAULIC OIL TANK	2164-2	KIT,BIN TIP VALVE SECTION REPAIR.....	2162-6
HYDRAULIC OIL TANK ANTI-SKID STEP PADS	2164-2	KIT,BRAKE VALVE PEDAL SERVICE.....	2160-6
HYDRAULIC OIL TANK COVER.....	2164-2	KIT,BRAKE VALVE SERVICE	2160-6
HYDRAULIC OIL TANK COVER	2164-4	KIT,DELUXE LIGHTING.....	1673-6
HYDRAULIC OIL TANK COVER CYLINDER.....	2164-4	KIT,ENGINE CYLINDER BLOCK HEATER	0505-2
HYDRAULIC OIL TANK COVER DOOR LATCH	2164-4	KIT,ENGINE PISTON AND CYLINDER LINER.....	0403-2
HYDRAULIC OIL TANK COVER STRAINER.....	2164-4	KIT,ENGINE PISTON RING	0403-2
HYDRAULIC OIL TANK DOOR.....	2164-2	KIT,EXTRA BATTERY	1671-6
HYDRAULIC OIL TANK FILTER ELEMENT	2164-4	KIT,FLASHING BEACON WIRING.....	2004-4
HYDRAULIC OIL TANK FILTERS	2164-4	KIT,HYD.OIL MANIFOLD SEAL	2162-6
HYDRAULIC OIL TANK OIL LEVEL GAUGE	2164-4	KIT,HYD.OIL MANIFOLD SEAL	2162-8
HYDRAULIC OIL TEMPERATURE SENDER.....	2163-8	KIT,HYD.OIL RESERVOIR OIL FILTER SEAL	2164-4
HYDRAULIC OIL TEMPERATURE SENDER	2163-9A	KIT,PNEUMATIC AIR DRYER REPAIR	2263-9A
HYDRAULIC OIL VOAC BLOCK.....	2162-4	KIT,SEAT REPAIR	1821-8
HYDRAULIC PUMP DRIVE SHAFT	0225-6	KIT,TIRE INFLATION	0110-4
HYDRAULIC PUMP DRIVE SHAFT COUPLING	0225-6	KIT,VOAC BLOCK SEAL	2162-6
HYDRAULIC PUMP DRIVE SHAFT GUARD	0225-6	KIT,VOAC BLOCK SEAL	2162-8
HYDRAULIC PUMP HOUSING,A20V	2161-2	KIT,WET DISC BRAKE OIL RESERVOIR FILTER SEAL	1064-4
HYDRAULIC PUMP PISTON AND CYLINDER A20V.....	2161-6	KIT,WET DISK BRAKE PUMP SERVICE	1063-10
HYDRAULIC PUMP VALVE (A20V)	2161-4	KITS, (TRANSMISSION WEAR PLATE/ADAPTER)	0342-2
HYDRAULIC PUMP,A20V,COMPLETE.....	2161-2	KITS,HYD.OIL MANIFOLD.....	2162-8
		KITS,SEAT SUSPENSION SERVICE	1821-10
		KITS,VOAC BLOCK SEAL	2162-8
		KSA, ENGINE AIR HEATER	1678-2
I		L	
IDLER SHAFT,TRANSFER CASE	0851-4	LABEL,CAB ROPS	1813-22
IGNITION SWITCH	1600-2	LABEL,DIAGNOSTIC TEST WIRE HARNESS.....	1674-12
IGNITION SWITCH KEY	1600-2	LABELS AND DECALS (350D)(ENGLISH)	1322-2
IGNITION SWITCH KEY POSITION DECAL	1600-2	LABELS AND DECALS (350D)(ENGLISH) (CONTINUED).....	1322-4
INDICATOR, AIR RESTRICTION (AIR INTAKE SYSTEM).....	0521-2	LABELS AND DECALS (350D)(FRENCH)	1322-6
INJECTION NOZZLE,FUEL.....	0409-2	LABELS AND DECALS (350D)(FRENCH) (CONTINUED).....	1322-8
INJECTOR FUEL LINE	0563-2	LABELS AND DECALS (350D)(SPANISH)	1322-10
INSTRUMENT PANEL HOUSING	1813-8	LABELS AND DECALS (350D)(SPANISH) (CONTINUED).....	1322-12
INTAKE MANIFOLD	0414-2	LABELS AND DECALS (400D)(ENGLISH)	1322-14
INTAKE MANIFOLD GASKET	0414-2		
INTAKE MANIFOLD TEMPERATURE SENDER UNIT	0414-2		
INTAKE OIL PAN AND PUMP	0407-2		
INTAKE SYSTEM, AIR.....	0521-2		

000I-17

350D/400D ARTICULATED DUMP TRUCK (DAVENPORT SN 608490-) (NON DAVENPORT SN 201812-)

ALPHABETICAL INDEX - CONTINUED

	PAGE		PAGE
LABELS AND DECALS (400D)(ENGLISH) (CONTINUED).....	1322-16	MANUAL GREASING LUBE HOSES	2000-2
LABELS AND DECALS (400D)(FRENCH)	1322-18	MANUAL GREASING MAMIFOLD	2000-2
LABELS AND DECALS (400D)(FRENCH) (CONTINUED).....	1322-20	MANUAL GREASING MANIFOLD COVER	2000-2
LABELS AND DECALS (400D)(SPANISH).....	1322-22	MANUAL HOLDER, SEAT	1821-12
LABELS AND DECALS (400D)(SPANISH) (CONTINUED).....	1322-24	MID AXLE ASSEMBLY (WITH DRY DISC BRAKES)(350D)	0242-10
LATCH, CAB DOOR	1813-6	MID AXLE ASSEMBLY WITH DIFF.,PLANETARY AND WET DISC BRAKES(350D)(400D).....	0242-6
LATCH, CAB WINDOW.....	1813-20	MID AXLE ASSEMBLY WITH DIFF.,PLANETARY AND WET DISC BRAKES(350D)(400D).....	0242-8
LATCH,CAB TILT	2160-8	MID AXLE DIFFERENTIAL	0210-6
LEVER (THROTTLE HOUSING WITH EXHAUST BRAKE CYLINDER).....	0410-4	MID AXLE DIFFERENTIAL	0210-8
LEVER, CAB WINDOW	1813-20	MID AXLE DIFFERENTIAL ASSEMBLY (WITH DRY DISC BRAKES)(350D)	0242-10
LEVER, RETARDER	1674-8	MID AXLE DIFFERENTIAL ASSEMBLY (WITH WET DISC BRAKES)(350D)(400D).....	0242-6
LEVER,HOOD RELEASE(S/N XXXXXX-).....	1911-8	MID AXLE DIFFERENTIAL ASSEMBLY (WITH WET DISC BRAKES)(350D)(400D).....	0242-8
LEVER,HOOD RELEASE(S/N-XXXXXX).....	1911-6	MID AXLE DIFFERENTIAL DISKS	0210-8
LH FRONT & RH MID AXLE WET DISC BRAKE HOUSING.....	1011-4	MID AXLE DIFFERENTIAL GEARS	0210-8
LID, CAB COMPARTMENT.....	1813-8	MID AXLE DIFFERENTIAL HOUSING	0210-8
LIGHT CONTROL, SEALED SWITCH MODULE	1600-2	MID AXLE DISC BRAKE ASSEMBLY (WITH DRY DISC BRAKES)(350D)	0242-10
LIGHT GUARD,BIN DUMP BODY REAR	1741-20	MID AXLE DISC BRAKE ASSEMBLY (WITH WET DISC BRAKES)(350D)(400D).....	0242-6
LIGHT,REVERSE.....	1673-2	MID AXLE DISC BRAKE ASSEMBLY (WITH WET DISC BRAKES)(350D)(400D).....	0242-8
LIGHT,REVERSE.....	1673-6	MID AXLE HOUSING (WITH DRY DISC BRAKES)(350D)	0242-10
LIGHTER,CIGAR	1600-4	MID AXLE HOUSING (WITH WET DISC BRAKES)(350D)(400D).....	0242-6
LIGHTS, REVERSE.....	1673-8	MID AXLE HOUSING SHAFT (WITH DRY DISC BRAKES)(350D)	0242-10
LIGHTS,BRAKE	1673-2	MID AXLE HOUSING SHAFT (WITH WET DISC BRAKES)(350D)(400D).....	0242-6
LIGHTS,REAR	1673-2	MID AXLE HOUSING SHAFT (WITH WET DISC BRAKES)(350D)(400D).....	0242-8
LINE,STEERING VALVE.....	2160-2	MID AXLE PLANETARY DRIVE (WITH DRY DISC BRAKES)	0242-10
LINES (OIL)AND HARDWARE (TURBOCHARGER)	0416-4	MID AXLE PLANETARY DRIVE (WITH WET DISC BRAKES)(350D)(400D).....	0242-6
LINES AND HARDWARE (CYLINDER HEAD)	0409-6	MID AXLE PLANETARY DRIVE (WITH WET DISC BRAKES)(350D)(400D).....	0242-8
LINES, RINGS, VALVES AND CONNECTORS (FUEL).....	0563-2	MID AXLE WET DISC BRAKE BRAKE LINES	1011-16
LINES,RADIATOR.....	0511-4	MID AXLE WET DISC BRAKE LINE GUARDS	1011-16
LINES,REAR CHASSIS LUBE.....	2000-6	MID REAR DRIVE SHAFT	0225-1
LINKS, REAR SUSPENSION	0242-22	MID UNIVERSAL DRIVE SHAFT	0225-4
LOUVERS,CAB HVAC	1832-4	MID UNIVERSAL DRIVE SHAFT CROSS AND BEARING	0225-4
LUBE FITTING (TAILGATE KIT)	1741-22	MID UNIVERSAL DRIVE SHAFT U-JOINT	0225-8
LUBE HOSES,FRONT CHASSIS	2000-4	MID UNIVERSAL DRIVESHAFT	0225-8
LUBE HOSES,MANUAL GREASING	2000-2	MIDDLE AND REAR AXLE DISC BRAKE CALIPER (WITH DRY DISC BRAKE)(350D).....	1011-10
LUBE LINES FRONT CHASSIS	2000-4	MIDDLE AND REAR AXLE DISC BRAKE KIT (WITH DRY DISC BRAKE)(350D).....	1011-10
M			
MAIN BEARINGS, CRANKSHAFT AND GEAR	0401-2	MIDDLE AND REAR AXLE DISC BRAKE LINES (WITH DRY DISC BRAKE)(350D).....	1011-10
MAIN FRAME AND GUARDS, FRONT	1741-2	MIDDLE AND REAR AXLE DISC BRAKE PAD WEAR INDICATOR(WITH DRY DISC BRAKE)(350D).....	1011-10
MAIN FRAME CLAMPS AND HARDWARE, FRONT	1741-4	MIDDLE AXLE WET DISC BRAKE ASSEMBLY	1011-16
MAIN HYD.PUMP HYD.HOSES	2163-10	MIRROR SUPPORT ARM, REAR VIEW	2002-8
MAIN HYD.PUMP HYD.HOSES	2163-11A	MODULE, COLD START (ELECTRICAL EQUIPMENT AND COLD START).....	1674-2
MAIN HYD.PUMP OIL LINES	2163-10	MODULE, ELECTRONIC, TCU	1674-8
MAIN HYD.PUMP OIL LINES	2163-11A	MODULE, ENGINE ADM.....	1600-4
MAIN HYDRAULIC PUMP MANIFOLD	2163-12		
MAIN HYDRAULIC PUMP MANIFOLD REPAIR KIT	2163-12		
MAIN HYDRAULIC PUMP MANIFOLD SEAL KIT.....	2163-12		
MANIFOLD BLOCK,HYDRAULIC OIL.....	2162-4		
MANIFOLD PLATES, HYDRAULIC.....	1913-2		
MANIFOLD, CASE DRAIN AND RETURN LINES.....	2163-8		
MANIFOLD, CASE DRAIN AND RETURN LINES.....	2163-9A		
MANIFOLD, EXHAUST.....	0410-2		
MANIFOLD, INTAKE	0414-2		
MANIFOLD,MAIN HYDRAULIC PUMP	2163-12		
MANIFOLD,MANUAL GREASING.....	2000-2		
MANUAL ADJUSTED REAR VIEW MIRROR	2002-2		
MANUAL GREASING FITTINGS.....	2000-2		

000I-18

350D/400D ARTICULATED DUMP TRUCK (DAVENPORT SN 608490-) (NON DAVENPORT SN 201812-)

ALPHABETICAL INDEX - CONTINUED

	PAGE		PAGE
MODULE, SEALED SWITCH	1600-2	PANEL, FRONT INTERIOR	1813-8
MODULE,COLD START	1674-2	PANEL, ROOF INTERIOR	1813-14
MODULE,FAN DRIVE	1674-6	PANEL, TRANSMISSION CONTROLLER	1674-8
MONITOR PANELING	1813-8	PANEL,CAB REAR	1813-12
MOTOR, FAN DRIVE CONTROL	2163-4	PANEL,CIRCUIT BREAKER	1600-2
MOTOR, STARTER	0422-2	PANELING, MONITOR	1813-8
MOTOR, VALVES AND LINES (HYDRAULIC)	2163-4	PANELS, CAB INTERIOR (1)	1813-8
MOTOR, WINDOW WIPER	1814-2	PANELS, CAB INTERIOR (2)	1813-10
MOTOR,HYD.OIL COOLER FAN	2267-2	PARK BRAKE ACTUATOR	1111-4
MOUNT, RUBBER (REAR SUSPENSION)	0242-24	PARK BRAKE ACTUATOR REPAIR KIT	1111-4
MOUNT,STEERING VALVE	2160-2	PARK BRAKE ASSEMBLY	1111-4
MOUNTING BRACKETS, CAB TILT	1813-12	PARK BRAKE CALIPER	1111-6
MOUNTING FLANGE, TRANSMISSION	0342-4	PARK BRAKE DIAPHRAGM	1111-4
MOUNTING, PARK BRAKE	1111-2	PARK BRAKE HOUSING	1111-4
MOUNTS,TRANSMISSION	0364-8	PARK BRAKE MOUNTING	1111-2
MUD GUARD,FRONT	1741-10	PARK BRAKE PADS	1111-6
MUD GUARD,FRONT	1741-12	PARK BRAKE SERVICE KITS	1111-6
MUFFLER	0531-2	PARK BRAKE,SEAL KIT	1111-4
		PEDAL,BRAKE VALVE	2160-6
		PEDAL,ENGINE SPEED CONTROL ACCELERATOR	1600-2
N		PIN GUARD, STRICKER (CAB DOOR LATCH)	1813-6
NOZZLE, FUEL INJECTION	0414-2	PIN, BIN PIVOT	1743-2
NOZZLE, WINDOW WASHER	1814-2	PIN,ARTICULATION JOINT	1741-16
NOZZLE,PISTON COOLING	0404-4	PINION AND RING GEAR	
NOZZLE,PISTON SPRAY COOLING	0404-4	(MID AXLE DIFFERENTIAL)	0210-6
		PINION CARRIER (P3) W/RETARDER,	
		TRANSMISSION PLANET	0351-10
		PINION CARRIER, PLANET P2 (TRANSMISSION)	0351-8
O		PINION GEAR,WET DISC BRAKE FINAL	
O-RINGS (WATER PUMP/REPAIR KIT)	0417-2	DRIVE KIT(350D)(400D)	0242-16
OEU, OUTPUT EXPANSION UNIT	1600-4	PINION GEAR,WET DISC BRAKE FINAL	
OIL COOLER BOX, TRANSMISSION	0364-4	DRIVE KIT(350D)(400D)	0242-18
OIL COOLER PORT, TRANSMISSION (400D)	0364-6	PINS/RINGS (VALVE SPOOLS/OIL FILTERS)	0362-4
OIL COOLER, TRANSMISSION	0364-10	PIPE,ENGINE EXHAUST BRAKE	0410-6
OIL COOLER,ENGINE	0419-2	PIPES,ENGINE EXHAUST	0531-2
OIL COOLER,TRANSMISSION	0364-10	PISTON (TRANSFER CASE OUTPUT SHAFT)	
OIL COOLER,WET DISC BRAKE	1011-6	(REAR)	0851-8
OIL DIPSTICK, TRANSMISSION	0363-2	PISTON AND CYLINDER, A20V HYDRAULIC	
OIL FILL, TRANSMISSION	0363-2	PUMP	2161-6
OIL FILTERS AND VALVE SPOOLS	0362-4	PISTON COOLING NOZZLE	0404-4
OIL LEVEL SENDER (OIL PAN)	0407-2	PISTON R.H.FRONT & LH MID AXLE WET DISC	
OIL LEVEL SIGHT GLASS,TRANSFER DRIVE		BRAKE	1011-2
GEAR HOUSING	0841-4	PISTON SPRAY COOLING NOZZLE	0404-4
OIL LINES AND HARDWARE (TURBOCHARGER)	0416-4	PISTON, LH FRONT & RH MID AXLE WET	
OIL LINES,MAIN HYD.PUMP	2163-10	DISC BRAKE	1011-4
OIL LINES,MAIN HYD.PUMP	2163-11A	PISTON,ENGINE	0403-2
OIL LINES,TRANSFER CASE HOUSING FILTER		PISTON,R.H. FRONT AND L.H.MID AXLE WET	
PUMP	0841-4	DISC BRAKE	1011-2
OIL PAN AND OIL PUMP INTAKE	0407-2	PISTONS (TRANS. ROTATING CLUTCH C1, C2)	0352-2
OIL PUMP/PRESSURE RELIEF VALVE (ENGINE)	0407-4	PIVOT ASSEMBLY, TAILGATE	1741-22
OIL PUMP,TRANSMISSION	0361-2	PIVOT, BIN	1743-2
OPERATOR TRAINER SEAT	1821-12	PLANET PINION CARRIER (P1)(TRANSMISSION)	0351-6
OPERATOR'S SEAT	1821-8	PLANET PINION CARRIER (P3) W/RETARDER	
OPERATOR'S SEAT MANUAL HOLDER	1821-12	(TRANSMISSION)	0351-10
OSCILLATION FRAME	1741-14	PLANET PINION CARRIER (3) W/RETARDER	
OUTPUT SHAFT TRANSFER CASE	0851-6	(TRANSMISSION) (CONTINUED)	0351-12
		PLANET PINION CARRIER P2, (TRANSMISSION)	0351-8
P		PLANET PINION,REAR AXLE FINAL DRIVE	
PACKING		(WITH DRY DISC BRAKES)(350D)	0242-20
(TRANS PINION CARRIER P3 W/RETARDER)	0351-10	PLANETARY ASSEMBLY WET DISC BRAKE	
PADS,PARK BRAKE	1111-6	FINAL DRIVE KIT(350D)(400D)	0242-16
PAN/PUMP (OIL INTAKE)	0407-2	PLANETARY ASSEMBLY WET DISC BRAKE	
PANEL COVER, SPEAKER	1813-10	FINAL DRIVE KIT(350D)(400D)	0242-18
PANEL, CAB DOOR INTERIOR	1813-10	PLANETARY DRIVE ASSEMBLY,FRONT AXLE	
		(WITH WET DISC BRAKES)(350D)(400D)	0242-4
		PLANETARY DRIVE,MID AXLE	
		(WITH DRY DISC BRAKES)(350D)	0242-10

0001-19

350D/400D ARTICULATED DUMP TRUCK (DAVENPORT SN 608490-) (NON DAVENPORT SN 201812-)

ALPHABETICAL INDEX - CONTINUED

	PAGE		PAGE
PLANETARY DRIVE,MID AXLE (WITH WET DISC BRAKES)(350D)(400D).....	0242-6	PUMP,FUEL INJECTION	0413-2
PLANETARY DRIVE,MID AXLE (WITH WET DISC BRAKES)(350D)(400D).....	0242-8	PUMP,TRANSFER CASE HOUSING FILTER	0841-4
PLANETARY,DRIVE REAR AXLE (WITH DRY DISC BRAKES)(350D)	0242-14	PUMP,WET DISC BRAKE HYDRAULIC OIL	1063-2
PLATE (PARK BRAKE MOUNTING).....	1111-2	PUMP,WINDSHIELD WASHER FLUID	1600-2
PLATE (VALVE SPOOLS/OIL FILTERS).....	0362-4	PURGE VALVE,PNEUMATIC AIR RESERVOIR TANK	2263-12
PLATE (WEAR) AND ADAPTER, TRANSMISSION	0342-2	PUSHRODS, FOLLOWERS AND CAMSHAFT W/GEAR.....	0402-2
PLATE AND BRAKE LINE GUARD BRACKETS (REAR FRAME CLAMPS AND HARDWARE)	1741-6		
PLATE, FIREWALL CLAMP MOUNTING	1741-4	R	
PLATES (TRANS. ROTATING CLUTCH C1, C2).....	0352-2	RADIATOR	0511-2
PLATES (TRANSMISSION TORQUE CONVERTER)	0351-4	RADIATOR COOLANT EXPANSION TANK CAP	0511-6
PLATES, (TRANSMISSION CLUTCH HOUSING).....	0341-2	RADIATOR COOLANT EXPANSION TANK	0511-6
PLATES, GEARS AND DISKS (FRONT AND REAR AXLE DIFFERENTIAL)	0210-4	RADIATOR COOLANT EXPANSION TANK SIGHT GAUGE	0511-6
PLATES, HYDRAULIC MANIFOLD.....	1913-2	RADIATOR COOLANT LEVEL SWITCH WIRING HARNESS.....	0511-6
PLATES, UNDERFRAME	1746-2	RADIATOR COOLANT LEVEL WARNING SENDER WIRE HARNESS.....	0511-6
PLATES,BIN DUMP BODY	1741-20	RADIATOR COOLANT LEVEL WARNING SWITCH	0511-6
PLUG AND FITTING (INTAKE OIL PAN/PUMP).....	0407-2	RADIATOR DRAIN VALVE	0511-2
PLUGS (TRANS. PLANET PINION CARRIER (P3) W/RETARDER (CONTINUED).....	0351-12	RADIATOR FAN GUARD	0511-2
PLUGS (VALVE SPOOLS/OIL FILTERS).....	0362-4	RADIATOR FAN SHROUD	0511-2
PNEUMATIC AIR DRYER	2263-9A	RADIATOR HOSES.....	0511-2
PNEUMATIC AIR DRYER FILTER ELEMENT	2263-9A	RADIATOR HOSES.....	0511-4
PNEUMATIC AIR DRYER HEATING ELEMENT	2263-9A	RADIATOR LINES	0511-4
PNEUMATIC AIR DRYER REPAIR KIT	2263-9A	RADIO ANTENNA	2001-4
PNEUMATIC AIR DRYER VALVE	2263-9A	RADIO SPEAKER COVER	1813-10
PNEUMATIC AIR RESERVOIR TANK PURGE VALVE.....	2263-12	RADIO SPEAKERS	2001-4
PNEUMATIC AIR RESERVOIR TANK SEAL KIT.....	2263-12	RADIO WIRE HARNESS	2001-4
PNEUMATIC CONTROL BLOCK.....	2262-2	RADIO,AM/FM	2001-4
PNEUMATIC CONTROL BLOCK	2263-2	RAIL, FUEL	0563-2
PNEUMATIC CONTROL BLOCK HOSES	2263-2	REAR AXLE ASSEMBLY (WITH DRY DISC BRAKES)(350D)	0242-14
PNEUMATIC CONTROL BLOCK SOLENOID VALVE	2262-2	REAR AXLE ASSEMBLY (WITH WET DISC BRAKES)(350D)(400D).....	0242-12
PNEUMATIC CONTROL BLOCK SWITCH	2262-2	REAR AXLE BRAKES (WITH DRY DISC BRAKES)(350D)	0242-14
PNEUMATIC CONTROL BLOCK SWITCH SENDER	2262-2	REAR AXLE DIFFERENTIAL (WITH DRY DISC BRAKES)(350D)	0242-14
PNEUMATIC HOSE, REAR CHASSIS	2263-10	REAR AXLE DIFFERENTIAL (WITH WET DISC BRAKES)(350D)(400D).....	0242-12
PORT, TRANSMISSION OIL COOLER (400D)	0364-6	REAR AXLE FINAL DRIVE HOUSING (WITH DRY DISC BRAKES)(350D)	0242-20
POWER ADJUSTED REAR VIEW MIRROR.....	2002-4	REAR AXLE FINAL DRIVE KIT (WITH DRY DISC BRAKES)(350D)	0242-20
POWER ADJUSTED REAR VIEW MIRROR SWITCH.....	2002-4	REAR AXLE FINAL DRIVE PLANET PINION (WITH DRY DISC BRAKES)(350D)	0242-20
POWER ADJUSTED REAR VIEW MIRROR WIRE HARNESS	2002-4	REAR AXLE FINAL DRIVE SUN GEAR (WITH DRY DISC BRAKES)(350D)	0242-20
POWER TAKE OFF	4051-2	REAR AXLE HOUSING (WITH DRY DISC BRAKES)(350D)	0242-14
PRECLEANER (AIR INTAKE SYSTEM).....	0521-2	REAR AXLE HOUSING AXLE SHAFT (WITH WET DISC BRAKES)(350D)(400D).....	0242-12
PRESSURE RELIEF VALVE/ENGINE OIL PUMP	0407-4	REAR AXLE PLANETARY DRIVE (WITH DRY DISC BRAKES)(350D)	0242-14
PRIMARY FILTER WATER SEPERATOR.....	0420-4	REAR AXLE PLANETARY DRIVE (WITH WET DISC BRAKES)(350D)(400D).....	0242-12
PRIMARY FUEL FILTER.....	0420-4	REAR AXLE SHAFT (WITH DRY DISC BRAKES)(350D)	0242-14
PRIMARY FUEL FILTER ELEMENT.....	0420-4	REAR AXLE WET DISC BRAKE SEAL	1011-18
PRIMARY FUEL FILTER FUEL HOSES	0420-4	REAR CHASSIS LUBE HOSES	2000-6
PRIMARY FUEL FILTER SHIELD.....	0420-4	REAR CHASSIS LUBE LINE GUARDS.....	2000-6
PROPSHAFT GUARD GREASING DECAL	0225-7	REAR CHASSIS LUBE LINES.....	2000-6
PTO.....	4051-2	REAR CHASSIS WIRING HARNESS.....	1673-2
PTO FLANGE, TRANSMISSION	0342-4		
PULLEY, FAN DRIVE	0510-2		
PULLEY,ALTERNATOR.....	0423-4		
PULLEY,ENGINE FAN DRIVE	0510-2		
PUMP (TRANSMISSION TORQUE CONVERTER)	0351-4		
PUMP AND REPAIR KIT (WATER PUMP)	0417-2		
PUMP/PAN (OIL INTAKE)	0407-2		
PUMP/PRESSURE RELIEF VALVE (ENGINE OIL)	0407-4		
PUMP,AUXILIARY STEERING	2163-3A		
PUMP,AUXILIARY STEERING	2163-11C		

0001-20

350D/400D ARTICULATED DUMP TRUCK (DAVENPORT SN 608490-) (NON DAVENPORT SN 201812-)

ALPHABETICAL INDEX - CONTINUED

PAGE	PAGE
REAR DRIVE SHAFT0225-1	RH FRONT & LH MID AXLE WET DISC BRAKE HOUSING 1011-2
REAR FLOODLIGHT1673-8	RIM, WHEEL 0110-2
REAR FRAME ASSEMBLY1741-18	RING GEAR (TRANS. PLANET PINION CARRIER P2) 0351-8
REAR FRAME CLAMPS AND HARDWARE1741-6	RING GEAR AND PINION (MID AXLE DIFFERENTIAL) 0210-6
REAR LIGHTS1673-2	RING GEAR AND PINION,FRONT AND REAR AXLE 0210-2
REAR PANEL,CAB1813-12	RING GEAR WET DISC BRAKE FINAL DRIVE KIT(350D)(400D) 0242-16
REAR SUSPENSION0242-24	RING GEAR WET DISC BRAKE FINAL DRIVE KIT(350D)(400D) 0242-18
REAR SUSPENSION LINKS0242-22	RING GEAR, FLYWHEEL 0401-2
REAR TURN LIGHTS1673-2	RING, WHEEL 0110-2
REAR UNIVERSAL DRIVE SHAFT0225-3	RINGS (TRANS. ROTATING CLUTCH C1, C2) 0352-2
REAR UNIVERSAL DRIVE SHAFT U-JOINT0225-3	RINGS/PINS (VALVE SPOOLS/OIL FILTERS) 0362-4
REAR VIEW MIRROR BODY2002-6	RINGS, SNAP (TRANSMISSION PLANET PINION CARRIER P1) 0351-6
REAR VIEW MIRROR BODY COVER2002-6	RINGS, SNAP (TRANSMISSION TORQUE CONVERTER) 0351-4
REAR VIEW MIRROR BRACKET2002-8	RINGS, VALVES, CONNECTORS AND FUEL LINES 0563-2
REAR VIEW MIRROR REPLACEMENT GLASS2002-6	ROCKER ARM COVER 0409-2
REAR VIEW MIRROR REPLACEMENT GLASS SEAL2002-6	ROCKER ARM COVER GASKET 0409-2
REAR VIEW MIRROR SUPPORT ARM2002-8	ROD BEARING (CRANKSHAFT) 0401-2
REAR VIEW MIRROR,MANUAL ADJUSTED2002-2	ROD BEARINGS, CONNECTING ROD 0401-2
REAR VIEW MIRROR,POWER ADJUSTED2002-4	ROD,SHIFT FORK (FRONT AND REAR AXLE DIFFERENTIAL) 0210-4
RECEIVER-DRYER A/C PRESSURE SWITCH1832-2	ROLLER AND THRUST BEARINGS (TRANS. PLANET PINION CARRIER P2) 0351-8
RECEIVER-DRYER,AIR CONDITIONING1832-2	ROLLER AND THRUST BEARINGS (TRANSMISSION PLANET PINION CARRIER P1) 0351-6
REFLECTOR (400D)(ENGLISH)1322-16	ROLLER BEARING (POWER TAKE OFF) 4051-2
REFLECTOR DECAL (350D)(ENGLISH) (CONTINUED)1322-4	ROOF INTERIOR PANELS 1813-14
REFLECTOR DECAL (350D)(FRENCH)1322-8	ROPS LABEL,CAB 1813-22
REFLECTOR DECAL (350D)(SPANISH)1322-12	ROTATING CLUTCH, TRANSMISSION (C1, C2) 0352-2
REFLECTOR DECAL (400D)(FRENCH)1322-20	ROTOR AND STATOR (TRANS PINION CARRIER P3 W/RETARDER) 0351-10
REFLECTOR DECAL (400D)(SPANISH)1322-24	
RELEASE LEVER,HOOD(S/N XXXXXX-)1911-8	S
RELEASE LEVER,HOOD(S/N-XXXXXX)1911-6	SANDWICH BLOCK, REAR SUSPENSION 0242-24
RELEASE, CAB WINDOW1813-20	SEAL (POWER TAKE OFF) 4051-2
RELIEF VALVE(PRESSURE)/ENGINE OIL PUMP0407-4	SEAL (TRANSMISSION OIL COOLER BOX) 0364-4
RELIEF VALVE,BIN TIP CYLINDER2163-18	SEAL KIT,FRONT AXLE SUSPENSION STRUT CYLINDER REPAIR 0265-4
REMANUFACTURED TRANSMISSION0364-8	SEAL KIT,HYDRAULIC OIL MANIFOLD BLOCK 2162-4
REPAIR KIT AND WATER PUMP0417-2	SEAL KIT,MAIN HYDRAULIC PUMP MANIFOLD 2163-12
REPAIR KIT,CAB HYDRAULIC TILT CYLINDER2160-10	SEAL KIT,PARK BRAKE 1111-4
REPAIR KIT,CAB TILT HYD.PUMP2160-8	SEAL KIT,PNEUMATIC AIR RESERVOIR TANK 2263-12
REPAIR KIT,MAIN HYDRAULIC PUMP MANIFOLD2163-12	SEAL KIT,SERVICE BRAKE CALIPER(350D) (WITH DRY DISC BRAKE) 1011-20
REPAIR KIT,PARK BRAKE ACTUATOR1111-4	SEAL KIT,TRANSMISSION FRONT SUPPORT 0361-2
REPAIR KIT,STEERING CONTROL VALVE0962-2	SEAL KIT,VOAC HYD.OIL BLOCK 2162-4
REPAIR KIT,STEERING CYLINDER0965-4	SEAL KIT,WET DISC BRAKE PUMP 1063-10
RESERVOIR,COMPRESSED AIR2263-3	SEAL, CAB BOTTOM 1813-18
RESERVOIR,COMPRESSED AIR2263-8	SEAL,ENGINE COMPARTMENT HOOD 1911-4
RESERVOIR,COMPRESSED AIR DRYER2263-6	SEAL,REAR AXLE WET DISC BRAKE 1011-18
RESERVOIR,WET DISC BRAKE OIL1064-2	SEAL,REAR VIEW MIRROR REPLACEMENT GLASS 2002-6
RESERVOIR,WINDSHIELD WASHER FLUID1600-2	SEALED SWITCH MODULE 1600-2
RESISTOR,TRANSMISSION CONTROLLER1674-8	SEALS (TRANS. CONTROL VLV., WIRING HARNES/ELECTRICAL COMPONENTS) 0362-2
RETAINER (TRANS. PINION CARRIER (P3) W/RETARDER (CONTINUED)0351-12	SEALS (TRANS. ROTATING CLUTCH C1, C2) 0352-2
RETAINER (TRANSMISSION CLUTCH HOUSING)0341-2	
RETAINER AND SENSOR (SPEED) (TRANSMISSION CONVERTER HOUSING)0641-2	
RETAINER, CAB BOTTOM SEALS1813-18	
RETAINER,CAB DOOR WINDOW1813-6	
RETAINERS, ADJUSTERS AND GEARS (FRONT AND REAR AXLE DIFFERENTIAL)0210-2	
RETAINERS,CYLINDER HEAD VALVE0409-2	
RETARDER CONTROL, SEALED SWITCH MODULE1600-2	
RETARDER LEVER1674-8	
REVERSE LIGHT1673-2	
REVERSE LIGHT1673-6	
REVERSE LIGHT ASSEMBLIES1673-10	
REVERSE LIGHTS1673-8	

000I-21

350D/400D ARTICULATED DUMP TRUCK (DAVENPORT SN 608490-) (NON DAVENPORT SN 201812-)

ALPHABETICAL INDEX - CONTINUED

	PAGE		PAGE
SEALS/RINGS (TRANSFER CASE OUTPUT SHAFT) (REAR).....	0851-8	SHAFT,REAR AXLE HOUSING (WITH WET DISC BRAKES)(350D)(400D).....	0242-12
SEALS, CAB WINDOW	1813-2	SHAFT,TRANSFER CASE INPUT	0851-2
SEALS,CAB DOOR	1813-6	SHAFT,TRANSMISSION FRONT SUPPORTHOUSING	0361-2
SEAT ADJUSTMENT SWITCH KIT	1821-10	SHAFTS (TRANS. PLANET PINION CARRIER P3 W/RETARDER).....	0351-10
SEAT ASSEMBLY,COMPLETE	1821-8	SHAFTS (TRANS. ROTATING CLUTCH C1, C2)	0352-2
SEAT BELT	1821-8	SHIELD,ENGINE EXHAUST STACK	0531-2
SEAT BELT, TRAINER SEAT	1821-12	SHIELD,PRIMARY FUEL FILTER	0420-4
SEAT CUSHION	1821-8	SHIELDS,EXHAUST SYSTEM	0531-4
SEAT REPAIR KIT.....	1821-8	SHIFT FORK (FRONT AND REAR AXLE DIFFERENTIAL)	0210-4
SEAT SLIDE CONTROL HANDLE.....	1821-8	SHIFT FORK ROD (FRONT AND REAR AXLE DIFFERENTIAL)	0210-4
SEAT SUSPENSION	1821-8	SHIFT SELECTOR, TRANSMISSION	1674-8
SEAT SUSPENSION	1821-10	SHIM (PARK BRAKE MOUNTING).....	1111-2
SEAT SUSPENSION SERVICE KITS	1821-10	SHIMS (TRANS. ROTATING CLUTCH C1, C2).....	0352-2
SEAT, MANUAL HOLDER.....	1821-12	SHIMS (TRANSMISSION SHAFT)	0351-2
SEAT, OPERATOR TRAINER	1821-12	SHIMS, HOUSINGS, SNAP RINGS (FRONT AND REAR AXLE DIFFERENTIAL)	0210-4
SELCTOR, TRANSMISSION SHIFT	1674-8	SHIMS,BIN DUMP BODY	1741-20
SELECTOR, REMOTE GEAR	1674-8	SHROUD,FAN	0511-2
SELECTOR, TEMPERATURE (SEALED SWITCH MODULE).....	1600-2	SIGHT GAUGE,RADIATOR COOLANT EXPANSION GAUGE	0511-6
SENDER UNIT,FUEL GAUGE	0564-2	SIGHT GAUGE,WET DISC BRAKE OIL RESERVOIR LEVEL	1063-2
SENDER UNIT,FUEL GAUGE	1673-4	SLIDER,CAB DOOR WINDOW	1813-6
SENDER UNIT,INTAKE MANIFOLD TEMPERATURE	0414-2	SNAP RINGS (TRANSMISSION TORQUE CONVERTER)	0351-4
SENDER, OIL LEVEL (OIL PAN)	0407-2	SOLENOID SWITCH, BRUSH SET AND STARTER	0422-2
SENDER, SPEED CRANK, CAMSHAFT	1678-2	SOLENOID VALVE,PNEUMATIC CONTROL BLOCK	2262-2
SENDER,ENGINE COOLANT LEVEL.....	1673-4	SPACER (STEERING COLUMN AND WHEEL)	0911-2
SENDER,ENGINE COOLANT TEMPERATURE	0419-2	SPACER (TRANSMISSION SHAFT)	0351-2
SENDER,ENGINE OIL PRESSURE.....	0419-2	SPACER, EXHAUST MANIFOLD.....	0410-2
SENDER,FUEL TEMPERATURE	0404-2	SPACER, HOUSING AND SHAFT (FRONT AND REAR AXLE DIFFERENTIAL)	0210-2
SENDER,HYD.OIL TEMPERATURE	1674-6	SPEAKER COVER, RADIO	1813-10
SENDER,HYD.OIL TEMPERATURE	2163-8	SPEAKER PANEL COVER	1813-10
SENDER,HYD.OIL TEMPERATURE	2163-9A	SPEAKERS,RADIO	2001-4
SENDER,PNEUMATIC CONTROL BLOCK SWITCH	2262-2	SPEED CONTROL MODULE	1678-2
SENSOR AND RETAINER (SPEED) (TRANSMISSION CONVERTER HOUSING)	0641-2	SPEED CRANK, CAMSHAFT SENDER.....	1678-2
SENSOR, BIN COUNTER ROTARY	1673-2	SPLASH GUARD,BIN DUMP BODY	1741-20
SENSOR, WHEEL SPEED (TRANSMISSION CLUTCH HOUSING)	0341-2	SPOOLS (VALVE) AND OIL FILTERS	0362-4
SENSOR,ENGINE AIR INTAKE TEMPERATURE	0414-2	SPRING,HOOD(S/N XXXXXX-).....	1911-8
SENSOR,ENGINE AIR PRESSURE	0414-2	SPRING,HOOD(S/N-XXXXXX).....	1911-6
SENSOR,TRANSMISSION OIL LEVEL	0362-4	SPRING,HYD.HOSE BUNDLE PROTECTION	2163-6
SENSOR,TRANSMISSION SUMP TEMPERATURE	0362-2	SPRINGS AND STOPS (VALVE SPOOLS/OIL FILTERS)	0362-4
SERVICE BRAKE CALIPER ASSEMBLY(350D) (WITH DRY DISC BRAKE).....	1011-20	STAND-OFF (TRANS. CONTROL VLV, WIRING HARNES/ELECTRICAL COMPONENTS)	0362-2
SERVICE BRAKE CALIPER SEAL KIT(350D) (WITH DRY DISC BRAKE).....	1011-20	STARTER MOUNTING	0402-4
SERVICE KITS,PARK BRAKE	1111-6	STARTER RING GEAR, FLYWHEEL.....	0401-2
SHAFT (POWER TAKE OFF)	4051-2	STARTER, SOLENOID SWITCH AND BRUSH SET	0422-2
SHAFT, BEARING AND GEARS (TRANSFER CASE OUTPUT SHAFT) (REAR)	0851-8	STEERING METERING PUMP HYD. OIL LINES	2163-10
SHAFT, SPACER AND HOUSING (FRONT AND REAR AXLE DIFFERENTIAL)	0210-2	STEERING METERING PUMP HYD. OIL LINES	2163-11A
SHAFT, STEERING STEERING COLUMNWHEEL)	0911-2	STEERING COLUMN AND WHEEL	0911-2
SHAFT, TRANSMISSION	0351-2	STEERING CONTROL VALVE	0962-2
SHAFT,FRONT AXLE HOUSING (DRY DISC BRAKES)(350D)	0242-2	STEERING CONTROL VALVE REPAIR KIT	0962-2
SHAFT,FRONT AXLE HOUSING (WITH WET DISC BRAKES)(350D)(400D).....	0242-4	STEERING CYLINDER.....	0965-2
SHAFT,MID AXLE HOUSING (WITH DRY DISC BRAKES)(350D)	0242-10	STEERING CYLINDER.....	0965-4
SHAFT,MID AXLE HOUSING (350D)(400D)	0242-6	STEERING CYLINDER HOSE FITTINGS	0965-2
SHAFT,MID AXLE HOUSING (350D)(400D)	0242-8	STEERING CYLINDER HOSES	0965-2
SHAFT,REAR AXLE (WITH DRY DISC BRAKES)(350D)	0242-14	STEERING CYLINDER REPAIR KIT	0965-4
		STEERING METERING HYD.PUMP	2163-3A

0001-22

350D/400D ARTICULATED DUMP TRUCK (DAVENPORT SN 608490-) (NON DAVENPORT SN 201812-)

ALPHABETICAL INDEX - CONTINUED

	PAGE		PAGE
STEERING METERING HYD.PUMP	2163-11C	TEMPERATURE SWITCH,ENGINE COLD START	0404-4
STEERING METERING PUMP HYD.HOSES	2163-10	TERMINALS, WIRING HARNESS ELECTRICAL CONNECTORS	1674-12
STEERING METERING PUMP HYD.HOSES	2163-11A	TERMINALS, WIRING HARNESS ELECTRICAL CONNECTORS	1674-14
STEERING PRESSURE SWITCH.....	2162-2	TERMINALS, WIRING HARNESS ELECTRICAL CONNECTORS	1674-16
STEERING VALVE.....	2160-2	TERMINALS, WIRING HARNESS ELECTRICAL CONNECTORS	1674-18
STEPS,CAB (L.H.)	1741-12	TERMINALS, WIRING HARNESS ELECTRICAL CONNECTORS	1674-20
STEPS,CAB (R.H.)	1741-10	TERMINALS, WIRING HARNESS ELECTRICAL CONNECTORS	1674-22
STOPS AND SPRINGS (VALVE SPOOLS/OIL FILTERS)	0362-4	TEST MANIFOLD,BIN TIP HYD.HOSE.....	2163-6
STRAINER,HYDRAULIC OIL TANK COVER.....	2164-4	THROTTLE HOUSING WITH EXHAUST BRAKE CYLINDER	0410-4
STRAP, STOP (UNDER PLATE).....	1746-2	THRUST AND ROLLER BEARINGS (TRANS. PLANET PINION CARRIER P2)	0351-8
STRIKER PIN GUARD (CAB DOOR LATCH).....	1813-6	THRUST AND ROLLER BEARINGS (TRANSMISSION PLANET PINION CARRIER P1	0351-6
STRUT CYLINDER,FRONT AXLE SUSPENSION.....	0265-4	THRUST BEARING, (TRANSMISSION SHAFT).....	0351-2
SUN GEAR (TRANS. ROTATING CLUTCH C1, C2)	0352-2	THRUST BEARINGS (TRANSMISSION TORQUE CONVERTER)	0351-4
SUN GEAR (TRANSMISSION SHAFT).....	0351-2	TIGHTENER,DRIVE BELT	0429-2
SUN GEAR,REAR AXLE FINAL DRIVE (WITH DRY DISC BRAKES)(350D)	0242-20	TILT MOUNTING BRACKETS, CAB.....	1813-12
SUN VISOR	1813-10	TIMING GEAR COVER.....	0402-4
SUPPORT (STEERING COLUMN AND WHEEL).....	0911-2	TIMING GEAR COVER GASKET	0402-4
SUPPORT AND HARDWARE (ALTERNATOR).....	0423-6	TIP CONTROL, BIN (SEALED SWITCH MODULE)	1600-2
SUPPORT ARM, REAR VIEW MIRROR	2002-8	TIRE INFLATION KIT	0110-4
SUPPORT, HOOD(S/N XXXXXX-)	1911-8	TIRE VALVE STEM	0110-2
SUPPORT, HOOD(S/N-XXXXXX)	1911-6	TORQUE CONVERTER (TRANSMISSION).....	0351-4
SUPPORT,BIN TIP HYD.HOSE	2163-6	TRANSFER CASE HOUSING FILTER ELEMENT	0841-4
SUPPORT,TRANSFER DRIVE GEAR CASE	0841-2	TRANSFER CASE HOUSING FILTER PUMP	0841-4
SUPPORT,TRANSMISSION.....	0364-8	TRANSFER CASE HOUSING FILTER PUMP OIL LINES(SER.NO.201154-)	0841-4
SUPPORT,TRANSMISSION OIL COOLER.....	0364-10	TRANSFER CASE IDLER SHAFT	0851-4
SUPPORT,WET DISC BRAKE OIL COOLER	1011-6	TRANSFER CASE IDLER SHAFT BEARING	0851-4
SUPPORTS AND BRACKETS (FRONT MAIN FRAME/GUARDS).....	1741-2	TRANSFER CASE IDLER SHAFT HOUSING	0851-4
SUPPORTS, A/C COMPRESSOR	1832-8	TRANSFER CASE INPUT SHAFT	0851-2
SUSPENSION LINKS, REAR	0242-22	TRANSFER CASE INPUT SHAFT BEARINGS	0851-2
SUSPENSION, FRONT	0265-2	TRANSFER CASE INPUT SHAFT GEARS.....	0851-2
SUSPENSION, REAR	0242-24	TRANSFER CASE INPUT SHAFT HOUSING.....	0851-2
SUSPENSION, SEAT	1821-8	TRANSFER CASE OUTPUT SHAFT	0851-6
SUSPENSION,SEAT	1821-10	TRANSFER CASE OUTPUT SHAFT GEARS.....	0851-6
SWITCH (SOLENOID), BRUSH SET/STARTER	0422-2	TRANSFER CASE OUTPUT SHAFT HOUSING.....	0851-6
SWITCH (STEERING COLUMN AND WHEEL)	0911-2	TRANSFER CASE OUTPUT SHAFT, BEARING AND GEARS (REAR).....	0851-8
SWITCH MODULE, SEALED	1600-2	TRANSFER DRIVE CASE HEAT SHIELD	0841-2
SWITCH, IGNITION.....	1600-2	TRANSFER DRIVE GEAR CASE.....	0841-2
SWITCH, TURN SIGNAL.....	1600-2	TRANSFER DRIVE GEAR CASE BREATHER.....	0841-2
SWITCH,A/C	1832-6	TRANSFER DRIVE GEAR CASE HOUSING	0841-4
SWITCH,A/C RECEIVER DRYER PRESSURE	1832-2	TRANSFER DRIVE GEAR CASE HOUSING OIL LEVEL SIGHT GLASS	0841-4
SWITCH,BIN PIVOT	1673-2	TRANSFER DRIVE GEAR CASE SUPPORT.....	0841-2
SWITCH,BRAKE OIL PRESSURE	2162-2	TRANSMISSION BREATHER CAP	0364-8
SWITCH,BRAKE OIL TEMPERATURE	2162-2	TRANSMISSION CLUTCH HOUSING	0341-2
SWITCH,BRAKE VALVE	2160-6	TRANSMISSION CONTROL SUPPORT FRAME	1674-8
SWITCH,COLD START.....	1674-2	TRANSMISSION CONTROL VALVE, WIRING HARNESS/ELECTRICAL COMPONENTS	0362-2
SWITCH,FLASHING BEACON.....	2004-4	TRANSMISSION CONTROLLER	1674-8
SWITCH,PNEUMATIC CONTROL BLOCK	2262-2	TRANSMISSION CONTROLLER PANELING.....	1813-8
SWITCH,POWER ADJUSTED REAR VIEW MIRROR.....	2002-4	TRANSMISSION CONTROLLER RESISTOR	1674-8
SWITCH,RADIATOR COOLANT LEVEL WARNING	0511-6	TRANSMISSION CONVERTER HOUSING.....	0641-2
SWITCH,SEAT ADJUSTMENT KIT	1821-10	TRANSMISSION FRONT SUPPORT HOUSING	0361-2
SWITCH,STEERING PRESSURE.....	2162-2	TRANSMISSION FRONT SUPPORT HOUSING SHAFT.....	0361-2
SWITCH,WIPER	1600-2	TRANSMISSION FRONT SUPPORT SEAL KIT	0361-2
T			
TAILGATE KIT	1741-22		
TANK, FUEL.....	0564-2		
TANK,HYDRAULIC OIL	2164-2		
TANK,WET DISC BRAKE OIL	1064-2		
TEMPERATURE SELECTOR, SEALED SWITCH MODULE	1600-2		

0001-23

350D/400D ARTICULATED DUMP TRUCK (DAVENPORT SN 608490-) (NON DAVENPORT SN 201812-)

ALPHABETICAL INDEX - CONTINUED

PAGE	PAGE
TRANSMISSION MOUNTING FLANGE.....0342-4	VALVE, FAN DRIVE CONTROL..... 2163-4
TRANSMISSION MOUNTING ISOLATOR0364-8	VALVE, HYDRAULIC PUMP (A20V)..... 2161-4
TRANSMISSION MOUNTS0364-8	VALVE, STEERING..... 2160-2
TRANSMISSION OIL COOLER.....0364-10	VALVE, STEERING CONTROL 0962-2
TRANSMISSION OIL COOLER BOX0364-4	VALVE,BRAKE 2160-6
TRANSMISSION OIL COOLER FAN.....0364-2	VALVE,ENGINE INTAKE..... 0409-4
TRANSMISSION OIL COOLER FAN BRACKET0364-2	VALVE,PNEUMATIC AIR DRYER 2263-9A
TRANSMISSION OIL COOLER HOSES0364-10	VALVE,RADIATOR DRAIN 0511-2
TRANSMISSION OIL COOLER HYDRAULIC OIL LINES0364-10	VALVES, CONNECTORS, RINGS AND FUEL LINES 0563-2
TRANSMISSION OIL COOLER PORT (400D).....0364-6	VALVES, MOTOR, AND LINES (HYDRAULIC)..... 2163-4
TRANSMISSION OIL COOLER SUPPORT0364-10	VALVES,HTD.OIL MANIFOLD 2162-8
TRANSMISSION OIL FILL0363-2	VALVES,VOAC BLOCK..... 2162-8
TRANSMISSION OIL LEVEL SENSOR0362-4	VAPOR CONDENSER, AIR CONDITIONER..... 1833-2
TRANSMISSION OIL PUMP0361-2	VENT (TRANSMISSION CONVERTER) 0641-2
TRANSMISSION PLANET PINION CARRIER (P1)0351-6	VISOR, SUN 1813-10
TRANSMISSION PLANET PINION CARRIER (P2)0351-8	VOAC BLOCK BIN TIP SECTION..... 2162-6
TRANSMISSION PLANET PINION CARRIER (P3) W/RETARDER.....0351-10	VOAC BLOCK SEAL KIT 2162-6
TRANSMISSION PLANET PINION CARRIER (P3) W/RETARDER (CONTINUED).....0351-12	VOAC BLOCK SEAL KIT 2162-8
TRANSMISSION ROTATING CLUTCH (C1, C2).....0352-2	VOAC BLOCK SEAL KITS 2162-8
TRANSMISSION SHAFT0351-2	VOAC BLOCK VALVES 2162-8
TRANSMISSION SUMP TEMPERATURE SENSOR0362-2	VOAC BLOCK,HYD.OIL MANIFOLD 2162-2
TRANSMISSION SUPPORT0364-8	VOAC BLOCK,HYDRAULIC OIL..... 2162-4
TRANSMISSION TORQUE CONVERTER0351-4	VOAC HYD.OIL BLOCK SEAL KIT 2162-4
TRANSMISSION WEAR PLATE AND ADAPTER0342-2	
TRANSMISSION WIRING HARNESS0364-8	W
TRANSMISSION,REMANUFACTURED0364-8	WALKING BEAM, REAR SUSPENSION 0242-24
TRAY,BATTERY1671-2	WASHER, WINDOW 1814-2
TRIM, CAB INTERIOR.....1813-16	WATER PUMP AND REPAIR KIT 0417-2
TUBE (POWER TAKE OFF)4051-2	WATER PUMP DRIVE BELT 0429-2
TUBE, TRANSMISSION OIL FILL0363-2	WATER SEPERATOR,PRIMARY FUEL FILTER..... 0420-4
TURBOCHARGER0416-2	WEAR PLATE AND ADAPTER, TRANSMISSION..... 0342-2
TURBOCHARGER EXHAUST PIPE0416-2	WET DISC BRAKE FINAL DRIVE KIT (350D (400D))..... 0242-16
TURBOCHARGER EXHAUST SHIELD.....0531-4	WET DISC BRAKE FINAL DRIVE KIT (350D (400D))..... 0242-18
TURBOCHARGER HEAT SHIELD0416-2	WET DISC BRAKE HOSES 1063-6
TURBOCHARGER OIL LINES AND HARDWARE0416-4	WET DISC BRAKE HYDRAULIC HOSES 1063-4
TURN LIGHTS,REAR1673-2	WET DISC BRAKE HYDRAULIC OIL ACCUMULATOR 1063-2
TURN SIGNAL SWITCH.....1600-2	WET DISC BRAKE HYDRAULIC OIL PUMP 1063-2
	WET DISC BRAKE HYDRAULIC OIL RESERVOIR FILTER..... 1063-2
U	WET DISC BRAKE HYDRAULIC OIL RESERVOIR FILTER ELEMENT..... 1063-4
U-JOINT,FRONT AND REAR WHEEL DRIVESHAFT0225-5	WET DISC BRAKE LINES 1063-6
U-JOINT,FRONT DRIVESHAFT0225-2	WET DISC BRAKE OIL COOLER 1011-6
U-JOINT,HYD.PUMP DRIVE SHAFT0225-6	WET DISC BRAKE OIL COOLER SUPPORT 1011-6
U-JOINT,MID UNIVERSAL DRIVESHAFT.....0225-8	WET DISC BRAKE OIL RESERVOIR..... 1064-2
U-JOINT,REAR UNIVERSAL DRIVE SHAFT0225-3	WET DISC BRAKE OIL RESERVOIR FILTER..... 1064-2
UNDER PLATE1746-2	WET DISC BRAKE OIL RESERVOIR FILTER ELEMENT..... 1064-4
	WET DISC BRAKE OIL RESERVOIR FILTER SEAL KIT..... 1064-4
V	WET DISC BRAKE OIL RESERVOIR LEVEL SIGHT GAUGE..... 1063-2
VALVE (TRANS PINION CARRIER P3 W/RETARDER)0351-10	WET DISC BRAKE OIL TANK 1064-2
VALVE (AIR CLEANER).....0521-4	WET DISC BRAKE PUMP SEAL KIT 1063-10
VALVE (AIR INTAKE SYSTEM)0521-2	WET DISC BRAKE PUMP SERVICE KIT 1063-10
VALVE (CONTROL), WIRING HARNESS AND ELECTRICAL COMPONENTS0362-2	WHEEL AND STEERING COLUMN..... 0911-2
VALVE (PRESSURE RELIEF)/ENGINE OIL PUMP0407-4	WHEEL RIM 0110-2
VALVE (TRANS. PLANET PINION CARRIER (P3) W/RETARDER) (CONTINUED).....0351-12	WHEEL RING 0110-2
VALVE LINES, DECOMPRESSION VALVE0409-6	WHEEL,FLANGE 0110-2
VALVE SECTION,BIN TIP2162-4	WIND SHIELD WASHER FLUID BOTTLE 1600-2
VALVE SPOOLS AND OIL FILTERS.....0362-4	WINDOW DEFOG DUCTS, FRONT 1832-10
VALVE STEM, TIRE.....0110-2	WINDOW LATCHES 1813-20
	WINDOW WIPER AND WASHER..... 1814-2

0001-24

350D/400D ARTICULATED DUMP TRUCK (DAVENPORT SN 608490-) (NON DAVENPORT SN 201812-)

ALPHABETICAL INDEX - CONTINUED

PAGE

PAGE

WINDOWPANE, CAB DOOR.....	1813-6
WINDOWPANES, CAB	1813-2
WINDSHIELD	1813-2
WINDSHIELD WASHER FLUID RESERVOIR.....	1600-2
WINDSHIELD WASHER FLUID PUMP	1600-2
WIPER CONTROL, SEALED SWITCH MODULE	1600-2
WIPER SWITCH	1600-2
WIPER, WINDOW.....	1814-2
WIRE HARNESS	1832-6
WIRE HARNESS,BIN TIP RELIEF VALVE	2163-18
WIRE HARNESS,DIAGNOSTIC	1600-4
WIRE HARNESS,DIAGNOSTIC TEST	1674-12
WIRE HARNESS,ENGINE OVERSPEED	1674-10
WIRE HARNESS,FLASHING BEACON	2004-4
WIRE HARNESS,FRONT WORK LIGHT	1673-6
WIRE HARNESS,POWER ADJUSTED REAR VIEW MIRROR.....	2002-4
WIRE HARNESS,RADIATOR COOLANT WARNING LEVEL SENDER	0511-6
WIRE HARNESS,RADIO	2001-4
WIRING HARNESS (TRANS. PLANET PINION CARRIER W/RETARDER) (P3) (CONTINUED).....	0351-12
WIRING HARNESS ELECTRICAL CONNECTORS.....	1674-12
WIRING HARNESS ELECTRICAL CONNECTORS.....	1674-14
WIRING HARNESS ELECTRICAL CONNECTORS.....	1674-16
WIRING HARNESS ELECTRICAL CONNECTORS.....	1674-18
WIRING HARNESS ELECTRICAL CONNECTORS.....	1674-20
WIRING HARNESS ELECTRICAL CONNECTORS.....	1674-22
WIRING HARNESS/ELECTRICAL COMPONENTS AND TRANSMISSION CONTROL VALVE	0362-2
WIRING HARNESS, ARTICULATION	1674-4
WIRING HARNESS, ARTICULATION	1674-6
WIRING HARNESS, CAB POWER	1674-10
WIRING HARNESS, CAB TRANSMISSION.....	1674-8
WIRING HARNESS, CHASSIS.....	1674-6
WIRING HARNESS, ENGINE.....	1674-4
WIRING HARNESS, ENGINE.....	1678-2
WIRING HARNESS, ENGINE POWER	1671-2
WIRING HARNESS, FRONT CHASSIS	1674-4
WIRING HARNESS, REAR CHASSIS.....	1673-2
WIRING HARNESS, TRANSMISSION	1674-4
WIRING HARNESS,CAB	1600-2
WIRING HARNESS,ENGINE (ELECTRICAL EQUIPMENT AND COLD START).....	1674-2
WIRING HARNESS,RADIATOR COOLANT LEVEL SWITCH	0511-6
WIRING HARNESS,TRANSMISSION.....	0364-8
WORK LIGHT CONTROL, SEALED SWITCH MODULE	1600-2
WORK LIGHT,FRONT	1673-6
WORK LIGHTS, REVERSE LIGHTS, AND HEADLIGHT ASSEMBLIES	1673-10

Y

YOKE (TRANSFER CASE OUTPUT SHAFT) (REAR)	0851-8
---	--------

0110-1

WHEELS & TIRES & TRACKS

POWERED WHEELS, TIRES & FASTENERS 0110

MEMORANDA

0110-2

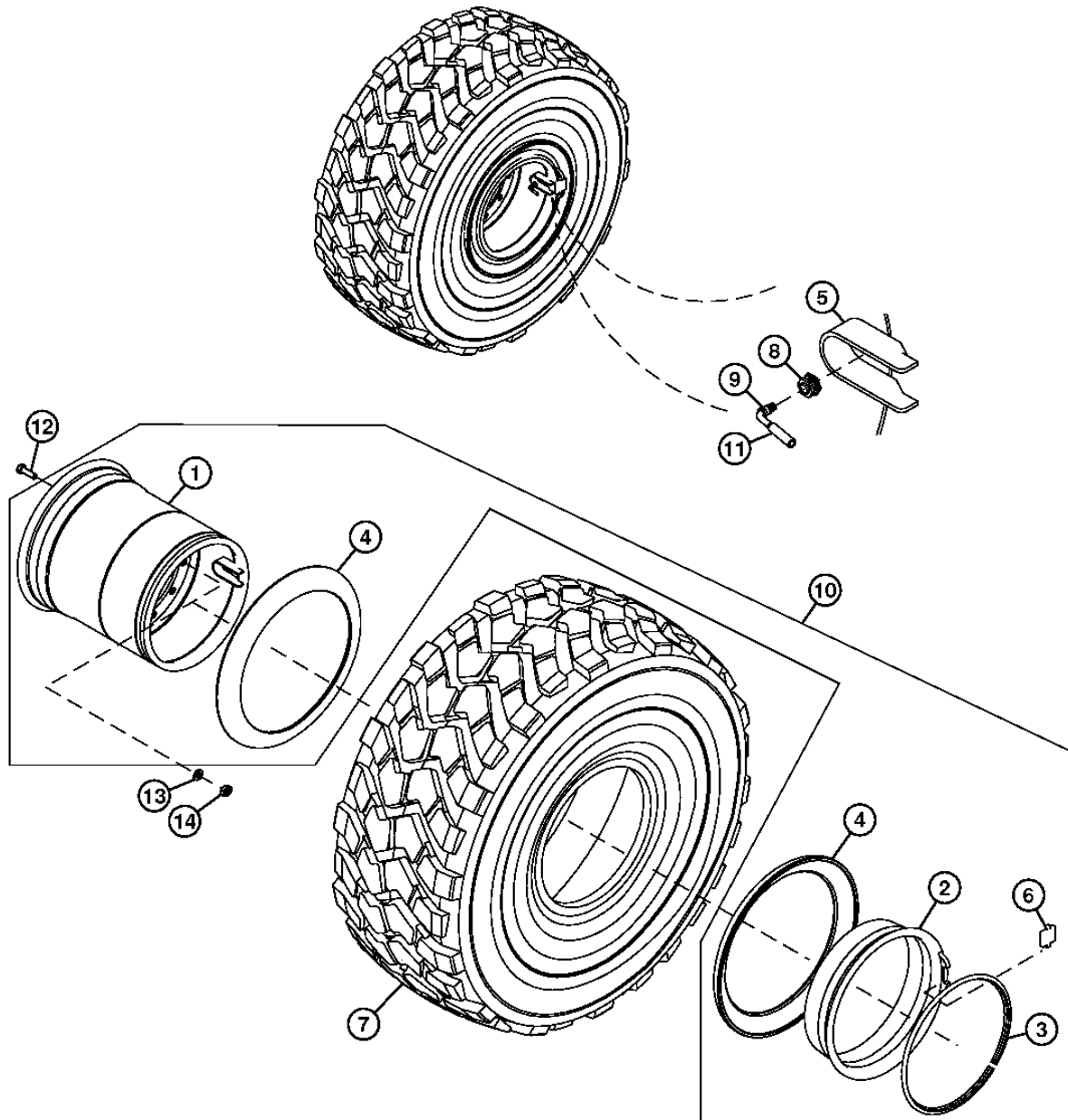
WHEELS & TIRES & TRACKS

POWERED WHEELS, TIRES & FASTENERS 0110

WHEEL RIM AND VALVE STEM
JANTE DE ROUE
CONJUNTO DE ARO DE RUEDA

TX1003897

-UN-16FEB06



Tx1003897

0110-2

THIS PARTS LISTING IS CONTINUED

350D/400D ARTICULATED DUMP TRUCK (DAVENPORT SN 608490-) (NON DAVENPORT SN

201812-) PC10003 (24-AUG-06)
PN=26

0110-3

WHEELS & TIRES & TRACKS

POWERED WHEELS, TIRES & FASTENERS 0110

**WHEEL RIM AND VALVE STEM
JANTE DE ROUE
CONJUNTO DE ARO DE RUEDA**

KEY	PART NO.	PART NAME	QTY.	SERIAL NO.	3 4 5 0 0 0 D D	REMARKS
1	RIM	1		X X	
2	TT226118	BAND	1		X	
	TT226116	WHEEL	1		X	
3	TT226117	RING	1		X	
	TT203693	WHEEL	1		X	
4	T34960	WHEEL RING	2		X	
5	GUARD	1		X X	
6	T210127	DRIVER	1		X X	(25MM EARS)
7	TIRE	1		X X	
8	AT252510	NUT	1		X X	
9	AT329112	TIRE VALVE STEM	1		X X	
10	TT190883	WHEEL	1		X	
	TT190882	WHEEL	1		X	
11	AT252527	CAP	1		X X	
12	AT253199	WHEEL BOLT	12		X X	
13	AT256131	THRUST WASHER	12		X X	
14	T185322	NUT	12		X X	

0110-4

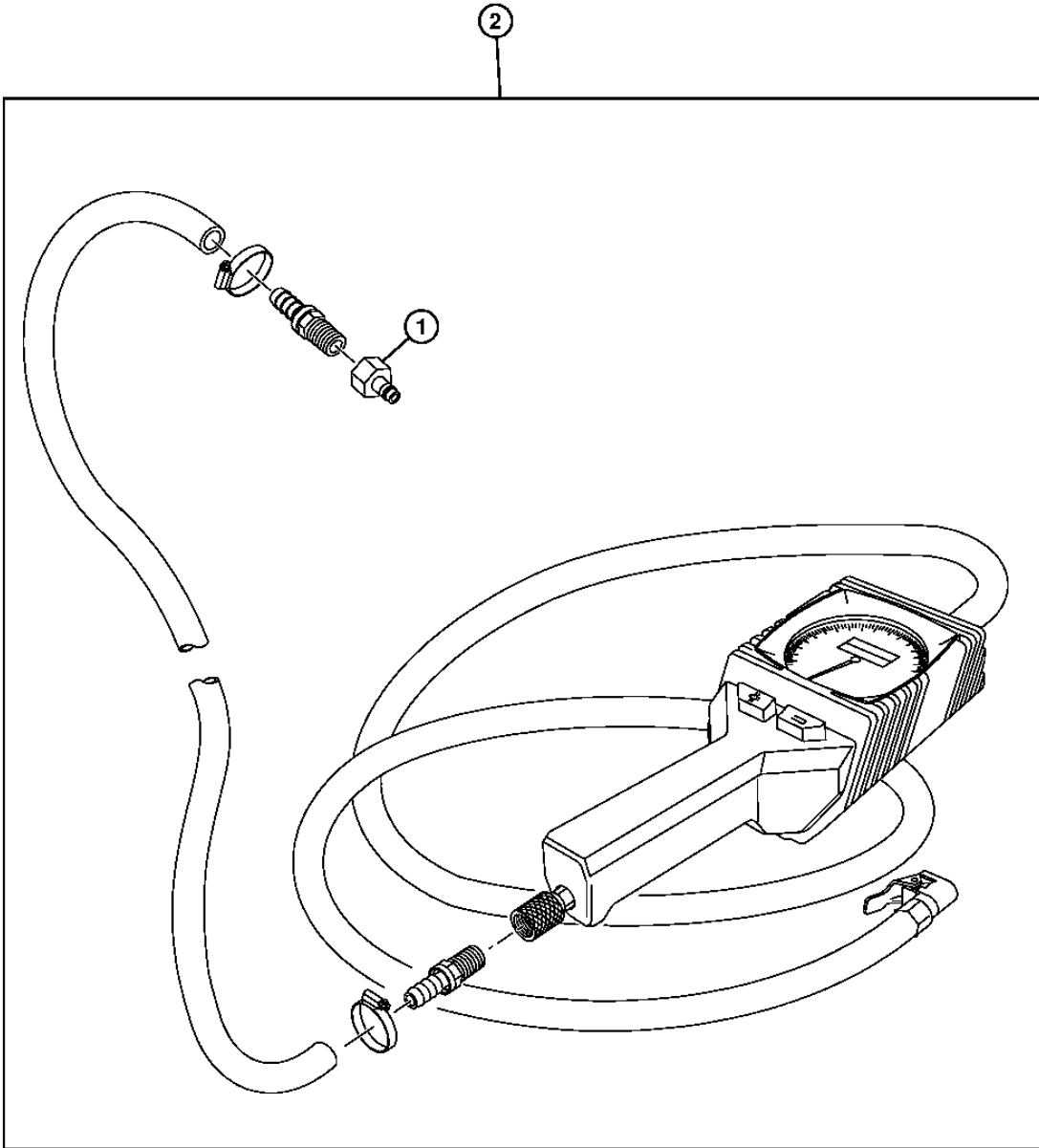
WHEELS & TIRES & TRACKS

POWERED WHEELS, TIRES & FASTENERS 0110

TIRE INFLATION KIT
KIT DE GONFLAGE DES PNEUS
JUEGO DE INFLADO DE NEUMATICOS

T162669

-UN-20DEC02



T162669

0110-4

THIS PARTS LISTING IS CONTINUED

350D/400D ARTICULATED DUMP TRUCK (DAVENPORT SN 608490-) (NON DAVENPORT SN

201812-) PC10003 (24-AUG-06)
PN=28

0110-5

WHEELS & TIRES & TRACKS

POWERED WHEELS, TIRES & FASTENERS 0110

**TIRE INFLATION KIT
KIT DE GONFLAGE DES PNEUS
JUEGO DE INFLADO DE NEUMATICOS**

KEY	PART NO.	PART NAME	QTY.	SERIAL NO.	3 4 5 0 0 0 D D	REMARKS
1	TT120926	ADAPTER FITTING	1		X X	
2	TT262867	TIRE VALVE STEM	1		X X	TIRE INFLATION

0210-2

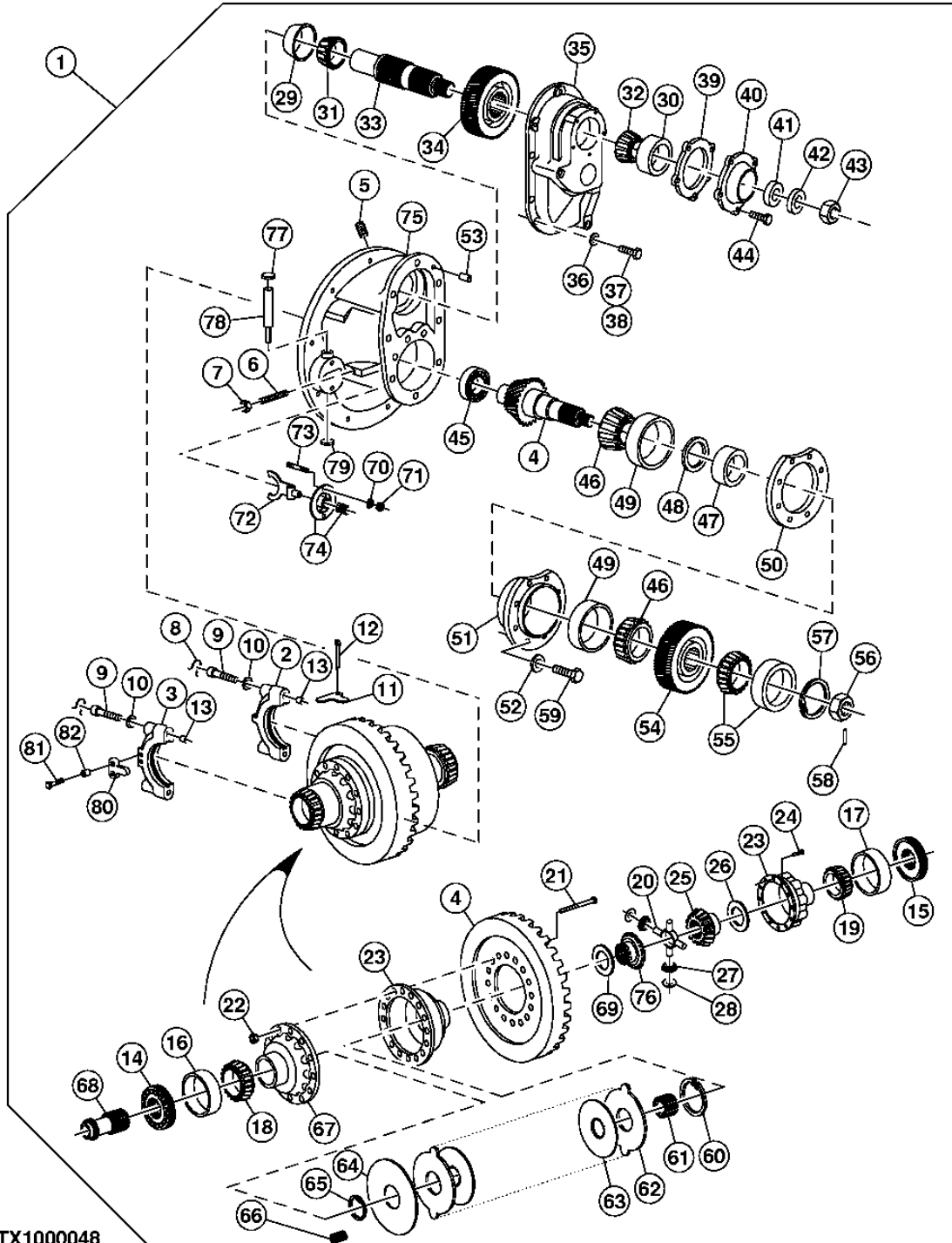
AXLES, DIFFERENTIALS AND SUSPENSION SYSTEMS

DIFFERENTIAL OR BEVEL DRIVE

FRONT AND REAR AXLE DIFFERENTIAL ESSIEUX AVANT ET ARRIERE EJES DELANTERO Y TRASERO

TX1000048

-UN-03NOV05



TX1000048

0210-3

AXLES, DIFFERENTIALS AND SUSPENSION SYSTEMS

DIFFERENTIAL OR BEVEL DRIVE

FRONT AND REAR AXLE DIFFERENTIAL ESSIEUX AVANT ET ARRIERE EJES DELANTERO Y TRASERO

KEY	PART NO.	PART NAME	QTY.	SERIAL NO.	3 5 0 0 D D	REMARKS
1	AT253977	DIFFERENTIAL	1		X	RATIO 3.7:1
	AT259849	DIFFERENTIAL	1		X	RATIO 4.11:1
2	BEARING CAP	1		X X	RH, (ORDER TT226822)
3	BEARING CAP	1		X X	LH, (ORDER TT226822)
4	AT253940	RING GEAR AND PINION	1		X	RATIO 3.7:1
	AT262522	RING GEAR AND PINION	1		X	(RATIO 4.11:1)
5	X01HP-12	FITTING PLUG	1		X X	
6	AT253920	SCREW	1		X X	
7	N277146	NUT	1		X X	
8	AT253864	RETAINER	4		X X	
9	AT258263	BOLT	4		X X	
10	AT258264	WASHER	4		X X	
11	AT253865	LOCK PLATE	2		X X	
12	11M7054	COTTER PIN	2		X X	6.300 X 32 MM
13	AT253867	BUSHING	2		X X	
14	AT253871	ADJUSTER	1		X X	RH
15	AT253870	ADJUSTER	1		X X	LH
16	JD8299	BEARING CUP	1		X X	RH
17	JD8272	BEARING CUP	1		X X	LH
18	AT258683	BEARING CUP	1		X X	RH
19	JD8989	BEARING CONE	1		X X	LH
20	AT253903	SPIDER	1		X X	
21	AT258685	BOLT	16		X X	
22	B30434	LOCK NUT	16		X X	
23	AT253927	HOUSING	1		X X	DIFFERENTIAL CASE
24	19H2641	CAP SCREW	12		X X	5/8" X 3-1/4"
25	AT253905	BEVEL GEAR	1		X X	RH
26	AT253899	THRUST WASHER	1		X X	
27	AT253901	BEVEL GEAR	4		X X	
28	AT253902	THRUST WASHER	4		X X	
29	AT253836	BEARING CUP	1		X X	
30	JD9119	BEARING CUP	1		X X	
31	AT253830	BEARING CONE	1		X X	
32	AT253906	BEARING CONE	1		X X	
33	AT253833	SHAFT	1		X X	
34	AT253831	GEAR	1		X X	
35	AT253832	HOUSING	1		X X	DIFFERENTIAL CARRIER COVER
36	AT258271	LOCK WASHER	10		X X	
37	AT258270	BOLT	1		X X	
38	AT258269	BOLT	9		X X	
39	AT254092	SHIM	AR		X X	.003"
	AT253908	SHIM	AR		X X	.005"
	AT253909	SHIM	AR		X X	.010"
	AT253910	SHIM	AR		X X	.020"
40	AT253838	BEARING HOUSING W/O BEARING	1		X X	
41	AT253835	SEAL	1		X X	
42	Z65394	WASHER	1		X X	
43	AT258279	NUT	1		X X	
44	R112882	CAP SCREW	5		X X	
45	AT253924	BEARING	1		X X	
46	AT253862	BEARING CONE	2		X X	OUTER
47	AT253926	SPACER	1		X X	

0210-4

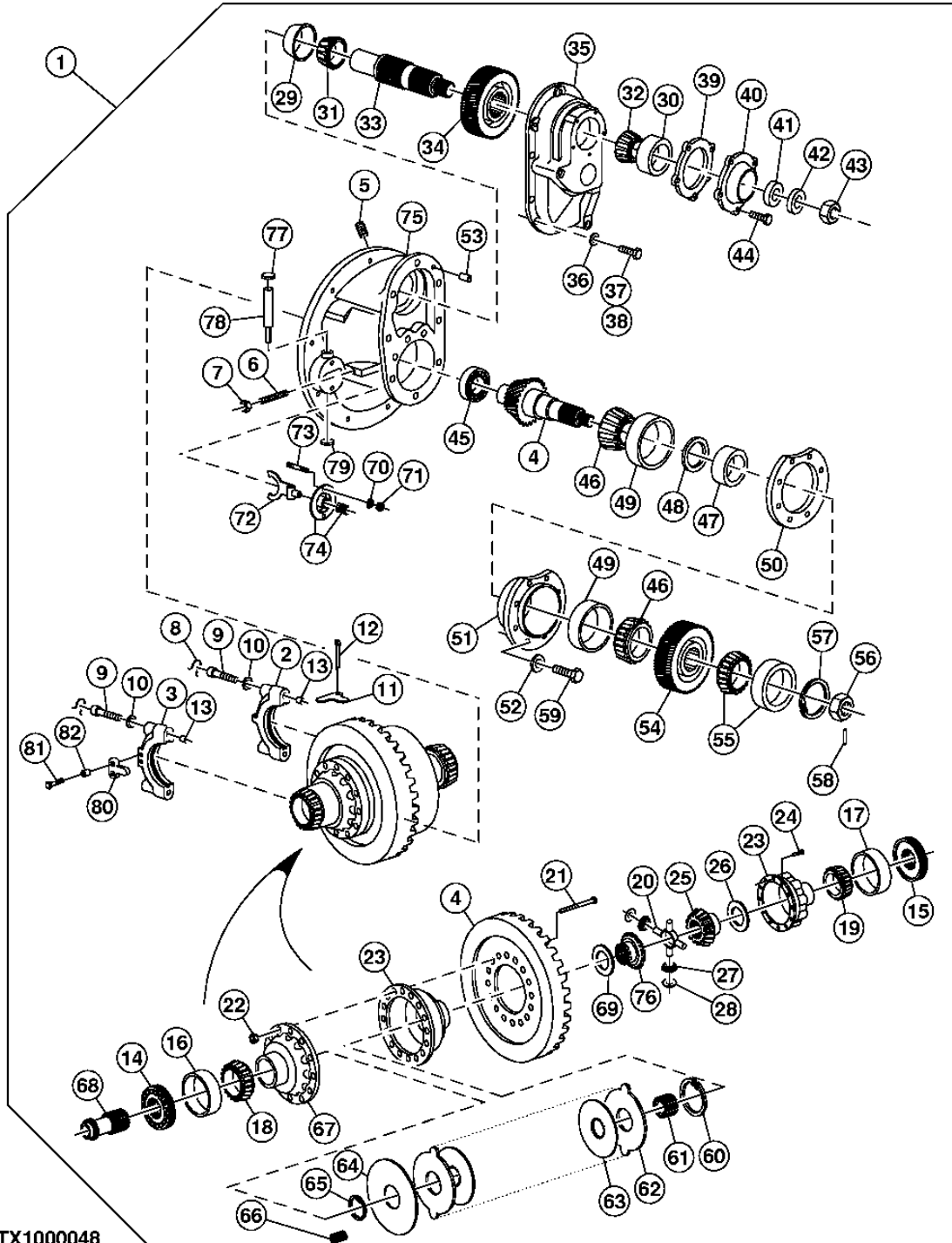
AXLES, DIFFERENTIALS AND SUSPENSION SYSTEMS

DIFFERENTIAL OR BEVEL DRIVE

FRONT AND REAR AXLE DIFFERENTIAL (CONTINUED) ESSIEUX AVANT ET ARRIERE EJES DELANTERO Y TRASERO

TX1000048

-UN-03NOV05



TX1000048

THIS PARTS LISTING IS CONTINUED

0210-4

350D/400D ARTICULATED DUMP TRUCK (DAVENPORT SN 608490-) (NON DAVENPORT SN

201812-) PC10003 (24-AUG-06)
PN=32

0210-5

AXLES, DIFFERENTIALS AND SUSPENSION SYSTEMS

DIFFERENTIAL OR BEVEL DRIVE

FRONT AND REAR AXLE DIFFERENTIAL (CONTINUED) ESSIEUX AVANT ET ARRIERE EJES DELANTERO Y TRASERO

KEY	PART NO.	PART NAME	QTY.	SERIAL NO.	3 5 0 0 D D	REMARKS
48	AT253837	SHIM	1		X X	
	AT253876	SHIM	AR		X X	.179"
	AT253877	SHIM	AR		X X	.180"
	AT253878	SHIM	AR		X X	.181"
	AT253879	SHIM	AR		X X	.182"
	AT253880	SHIM	AR		X X	.183"
	AT253881	SHIM	AR		X X	.184"
	AT253882	SHIM	AR		X X	.185"
	AT253883	SHIM	AR		X X	.186"
	AT253884	SHIM	AR		X X	.187"
	AT253885	SHIM	AR		X X	.188"
	AT253886	SHIM	AR		X X	.189"
	AT253887	SHIM	AR		X X	.190"
	AT253888	SHIM	AR		X X	.191"
	AT253889	SHIM	AR		X X	.192"
	AT253890	SHIM	AR		X X	.193"
49	AT253893	BEARING CUP	2		X X	
50	AT253912	SHIM	AR		X X	.003"
	AT253913	SHIM	AR		X X	.005"
	AT253914	SHIM	AR		X X	.010"
	AT253915	SHIM	AR		X X	.020"
51	AT253917	BEARING HOUSING W/O BEARING	1		X X	
52	AT258194	WASHER	6		X X	
53	AT253925	DOWEL PIN	2		X X	
54	AT253834	HELICAL GEAR	1		X X	
55	AT256265	CYLINDRICAL ROLLER BEARING	1		X X	
56	AT258273	NUT	1		X X	
57	AT253919	SNAP RING	1		X X	
58	34H321	SPRING PIN	1		X X	1/4" X 2-1/2"
59	AT258272	BOLT	6		X X	
60	AT253856	SNAP RING	1		X X	
61	AT253855	GEAR	1		X X	
62	AT253853	DISK WITH OUTER SPLINE	13		X X	
63	AT253854	DISK WITH INNER SPLINE	1		X X	
64	AT253857	PLATE	1		X X	
65	AT253858	SNAP RING	1		X X	
66	AT253859	COMPRESSION SPRING	12		X X	
67	AT253860	HOUSING	1		X X	DIFFERENTIAL CARRIER CASE
68	AT253852	SHAFT	1		X X	
69	AT253900	THRUST WASHER	1		X X	
70	AT258681	WASHER	2		X X	
71	H80440	LOCK NUT	2		X X	11,125 MM
72	AT258679	FORK	1		X X	SHIFT
73	841728000	STUD	1		X X	FORKSHIFT
74	AT254415	SEAL	1		X X	SHIFT FORK SPRING
75	TT226822	HOUSING	1		X X	DIFFERENTIAL (INCLUDES BEARING CAPS) (SUB FOR AT260342)
76	AT253904	BEVEL GEAR	1		X X	L.H.
77	30H17	PLUG	1		X X	1-1/4"
78	AT255243	SHIFTER ROD	1		X X	
79	AT253575	FITTING PLUG	1		X X	
80	AT253868	LOCK PLATE	1		X X	
81	CAP SCREW	2		X X	
82	AT253869	BUSHING	2		X X	

0210-6

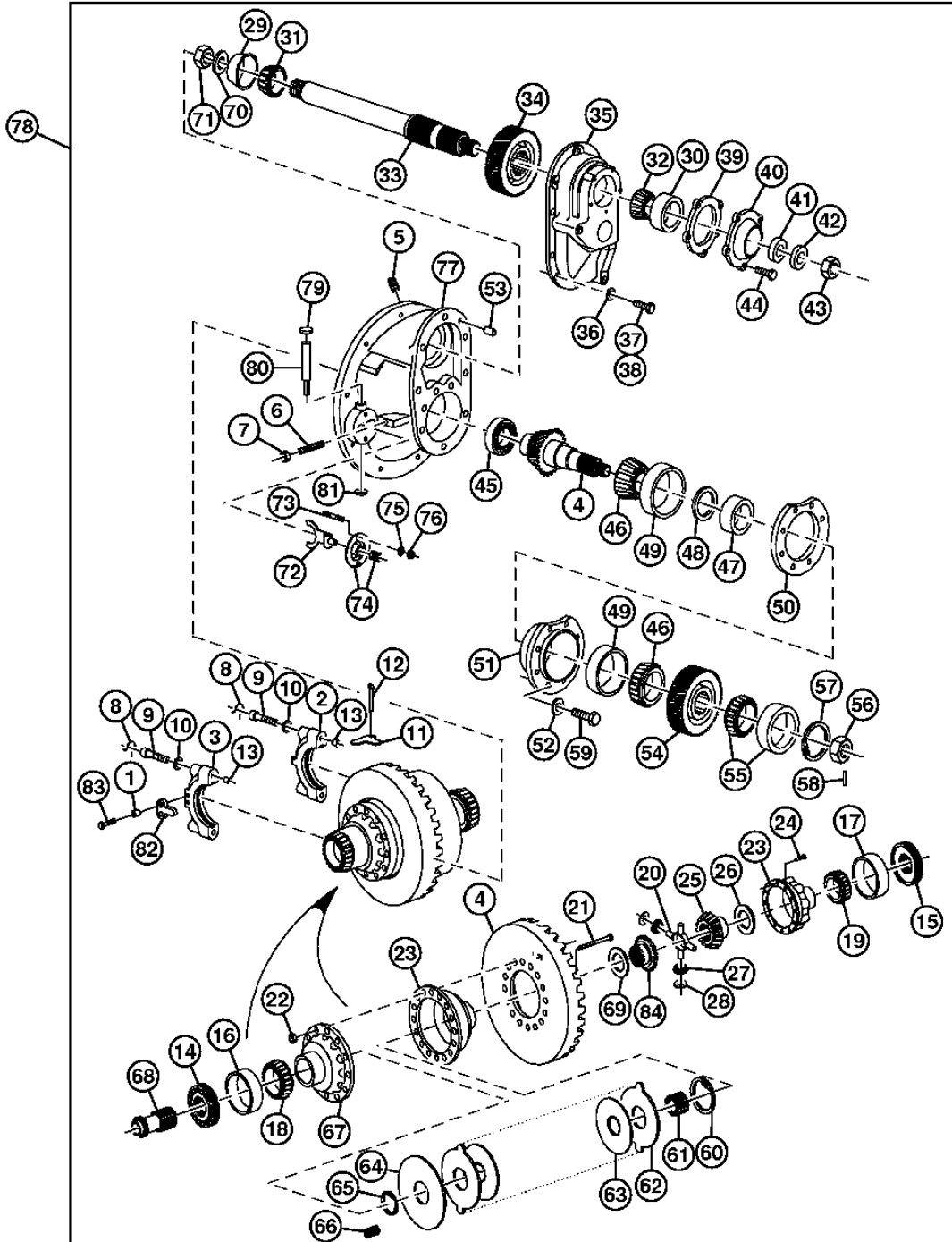
AXLES, DIFFERENTIALS AND SUSPENSION SYSTEMS

DIFFERENTIAL OR BEVEL DRIVE

MID AXLE DIFFERENTIAL DIFFERENTIEL DESSIEU MEDIAN DIFERENCIAL DEL EJE INTERMEDIO

TX1001969

-UN-01FEB06



TX1001969

0210-7

AXLES, DIFFERENTIALS AND SUSPENSION SYSTEMS

DIFFERENTIAL OR BEVEL DRIVE

MID AXLE DIFFERENTIAL
DIFFERENTIAL DESSIEU MEDIAN
DIFERENCIAL DEL EJE INTERMEDIO

KEY	PART NO.	PART NAME	QTY.	SERIAL NO.	3 5 0 0 D D	REMARKS
1	AT253869	BUSHING	1		X X	
2	BEARING CAP	1		X X	FURNISH AT260348
3	BEARING CAP	1		X X	FURNISH AT260348
4	AT253940	RING GEAR AND PINION	1		X	3.71 RATIO
	AT262522	RING GEAR AND PINION	1		X	4.11 RATIO
5	X01HP-12	FITTING PLUG	1		X X	
6	AT253920	SCREW	1		X X	
7	N277146	NUT	1		X X	
8	AT253864	RETAINER	4		X X	
9	AT258263	BOLT	4		X X	
10	AT258264	WASHER	4		X X	
11	AT253865	LOCK PLATE	2		X X	ADJUSTER
12	11M7054	COTTER PIN	2		X X	6.300 X 32 MM
13	AT253867	BUSHING	4		X X	
14	AT253871	ADJUSTER	1		X X	(RH) DIFFERENTIAL BEARING
15	AT253870	ADJUSTER	1		X X	(LH) DIFFERENTIAL BEARING
16	JD8299	BEARING CUP	1		X X	R.H.
17	JD8272	BEARING CUP	1		X X	LH
18	AT258683	BEARING CUP	1		X X	RH
19	JD8989	BEARING CONE	1		X X	LH
20	AT253903	SPIDER	1		X X	
21	AT258685	BOLT	16		X X	
22	B30434	LOCK NUT	16		X X	
23	AT253927	HOUSING	1		X X	DIFFERENTIAL CASE
24	19H2641	CAP SCREW	12		X X	5/8" X 3-1/4"
25	AT253905	BEVEL GEAR	1		X X	RH
26	AT253899	THRUST WASHER	1		X X	
27	AT253901	BEVEL GEAR	4		X X	SIDE PINION
28	AT253902	THRUST WASHER	4		X X	
29	AT253836	BEARING CUP	1		X X	
30	JD9119	BEARING CUP	1		X X	
31	AT253830	BEARING CONE	1		X X	
32	AT253906	BEARING CONE	1		X X	
33	AT253839	SHAFT	1		X X	
34	AT253831	GEAR	1		X X	
35	AT253832	HOUSING	1		X X	DIFFERENTIAL CARRIER COVER
36	AT258271	LOCK WASHER	1		X X	
37	AT258270	BOLT	1		X X	
38	AT258269	BOLT	1		X X	
39	AT254092	SHIM	AR		X X	1.935 MM (.003 IN.)
	AT253908	SHIM	AR		X X	2.226 MM (.005 IN.)
	AT253909	SHIM	AR		X X	6.452 MM (.010 IN.)
	AT253910	SHIM	AR		X X	12.903 MM (.020 IN.)
40	AT253838	BEARING HOUSING W/O BEARING	1		X X	BEARING COVER CUP

0210-8

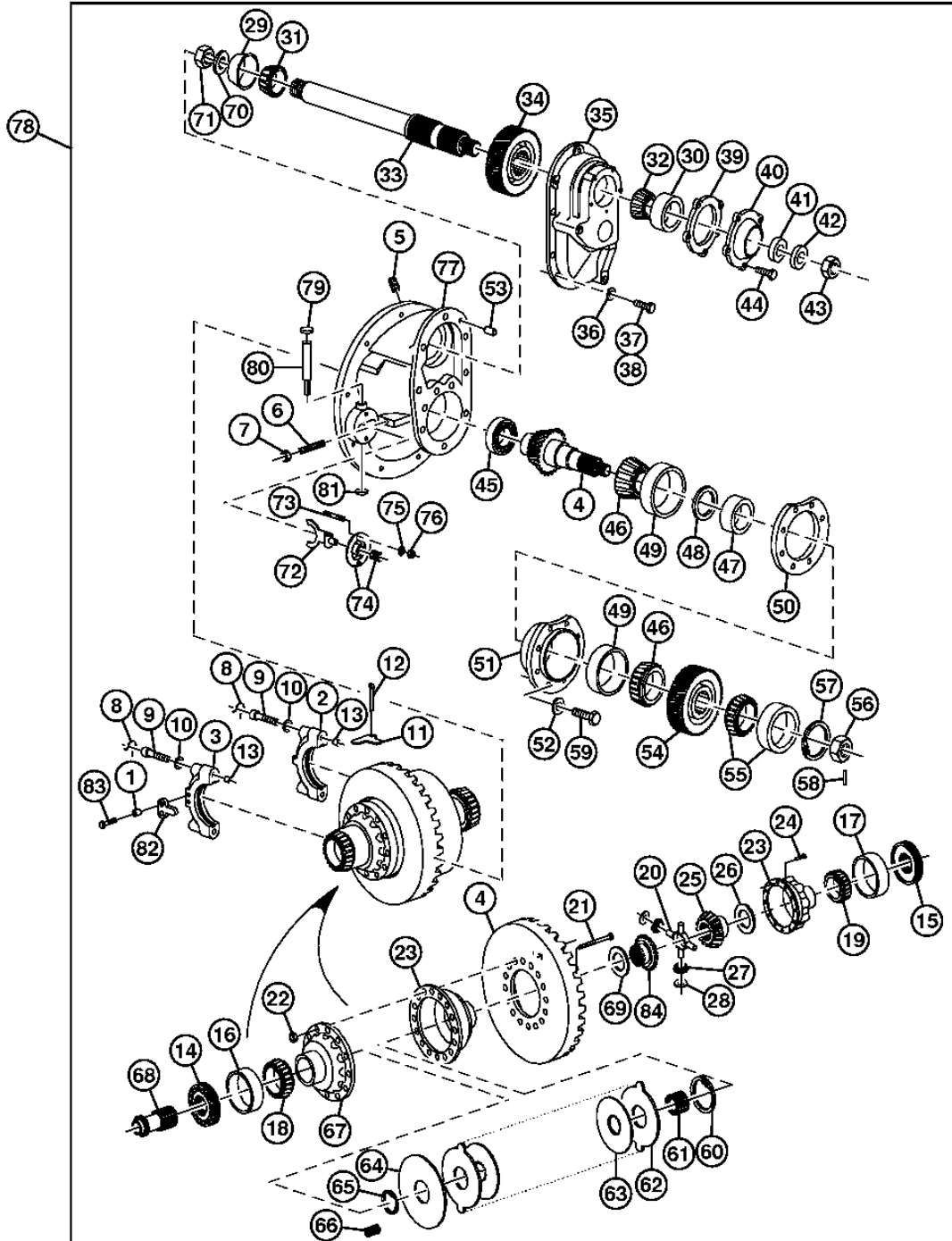
AXLES, DIFFERENTIALS AND SUSPENSION SYSTEMS

DIFFERENTIAL OR BEVEL DRIVE

MID AXLE DIFFERENTIAL (CONTINUED) DIFFERENTIEL DESSIEU MEDIAN DIFERENCIAL DEL EJE INTERMEDIO

TX1001969

-UN-01FEB06



TX1001969

0210-9

AXLES, DIFFERENTIALS AND SUSPENSION SYSTEMS

DIFFERENTIAL OR BEVEL DRIVE

MID AXLE DIFFERENTIAL (CONTINUED)
DIFFERENTIAL DESSIEU MEDIAN
DIFERENCIAL DEL EJE INTERMEDIO

KEY	PART NO.	PART NAME	QTY.	SERIAL NO.	3 4	REMARKS
					D D	
41	AT253835	SEAL	1		X X	OIL
42	Z65394	WASHER	1		X X	
43	AT258279	NUT	1		X X	
44	R112882	CAP SCREW	5		X X	
45	AT253924	BEARING	1		X X	
46	AT253862	BEARING CONE	2		X X	
47	AT253926	SPACER	1		X X	
48	AT253837	SHIM	1		X X	
	AT258265	SHIM	AR		X X	0.181
	AT253876	SHIM	AR		X X	0.179
	AT253877	SHIM	AR		X X	0.180
	AT253879	SHIM	AR		X X	0.182
	AT253880	SHIM	AR		X X	0.183
	AT253881	SHIM	AR		X X	0.184
	AT253882	SHIM	AR		X X	0.185
	AT253883	SHIM	AR		X X	0.186
	AT253884	SHIM	AR		X X	0.187
	AT253885	SHIM	AR		X X	0.188
	AT253886	SHIM	AR		X X	0.189
	AT253887	SHIM	AR		X X	0.190
	AT253888	SHIM	AR		X X	0.191
	AT253889	SHIM	AR		X X	0.192
	AT253890	SHIM	AR		X X	0.193
49	AT253893	BEARING CUP	2		X X	
50	AT253912	SHIM	AR		X X	0.003"
	AT253913	SHIM	AR		X X	0.005"
	AT253914	SHIM	AR		X X	0.10"
	AT253915	SHIM	AR		X X	0.20"
51	AT253917	BEARING HOUSING W/O BEARING	1		X X	
52	AT258194	WASHER	6		X X	
53	AT253925	DOWEL PIN	2		X X	
54	AT253834	HELICAL GEAR	1		X X	
55	AT256265	CYLINDRICAL ROLLER BEARING	1		X X	
56	AT258273	NUT	1		X X	
57	AT253919	SNAP RING	1		X X	
58	34H321	SPRING PIN	1		X X	1/4" X 2-1/2"
59	AT258272	BOLT	6		X X	
60	AT253856	SNAP RING	1		X X	DRIVER
61	AT253855	GEAR	1		X X	FRICION PLATE DRIVER
62	AT253853	DISK WITH OUTER SPLINE	9		X X	TANGED FRICTION PLATE
63	AT253854	DISK WITH INNER SPLINE	8		X X	SPLINED FRICTION PLATE
64	AT253857	PLATE	1		X X	PRESSURE
65	AT253858	SNAP RING	1		X X	PRESSURE PLATE
66	AT253859	COMPRESSION SPRING	10		X X	
67	AT253860	HOUSING	1		X X	CASE COVER SUPPORT GEAR
68	AT253852	SHAFT	1		X X	SLIDING CLUTCH
69	AT253900	THRUST WASHER	1		X X	
70	AT258276	WASHER	1		X X	
71	TT222989	FLANGE NUT	1		X X	
72	AT258679	FORK	1		X X	SHIFT
73	841728000	STUD	1		X X	FORK SHIFT
74	AT254415	SEAL	1		X X	FORK SHIFT AND SPRING
75	AT258681	WASHER	2		X X	
76	H80440	LOCK NUT	2		X X	11.125 MM. STUD
77	AT260348	HOUSING	1		X X	DIFFERENTIAL (INCLUDES BEARING CAPS)
78	AT253980	DIFFERENTIAL	1		X	RATIO 3.7:1
	AT259850	DIFFERENTIAL	1		X	RATIO 4.11:1
79	30H17	PLUG	1		X X	1-1/4", LH
80	AT255243	SHIFTER ROD	1		X X	
81	AT253575	FITTING PLUG	1		X X	
82	AT253868	LOCK PLATE	1		X X	
83	TT221170	CAP SCREW	1		X X	
84	AT253904	BEVEL GEAR	1		X X	

0210-10

AXLES, DIFFERENTIALS AND SUSPENSION SYSTEMS

DIFFERENTIAL OR BEVEL DRIVE

MEMORANDA

This as a preview PDF file from best-manuals.com



Download full PDF manual at best-manuals.com