



Operation and Maintenance Manual



SY365C LC Excavator

service@sanyamerica.com

SANY Part Number SSY005080403

Page Intentionally Blank

SANY

SY365C LC Excavator

Operation and Maintenance Manual



WARNING!

Read and understand all safety precautions and instructions in this manual and on the machine labels before operating or maintaining it. Failure to follow safety messages could result in death or serious injury. Keep this manual with the machine for future reference.

This manual is prepared by SANY Technical Publications,
while deemed to be accurate, is based upon technical information provided.

This manual provides safety and basic information for operation and maintenance of the machine.

It is the responsibility of the owner, user, properly trained operator, and lessor to be knowledgeable of, and comply with, all industry standards, government regulations, workplace rules, and other directives that may govern and/or apply to this equipment as well as its environment/conditions of use.

Contact a SANY dealer for additional information or assistance.

SANY
318 Cooper Circle
Peachtree City, Georgia 30269
www.sanyamerica.com
Phone: 470 552 SANY (7269)
www.sanyamerica.com/find-a-dealer



WARNING!

CALIFORNIA PROPOSITION 65 WARNING

Diesel engine exhaust and some of its constituents are known to the State of California to cause cancer, birth defects, and other reproductive harm.



WARNING!

CALIFORNIA PROPOSITION 65 WARNING

The battery posts, terminals, and related accessories contain chemical lead and lead compounds, chemicals known to the State of California to cause cancer, birth defects, or other reproductive harm. Wash hands after handling.

© 2020 by SANY. All rights reserved. No part of this publication may be reproduced, used, distributed, or disclosed except for normal operation and maintenance of the machine as described herein. All information included within this publication was accurate at the time of publication. Product improvements, revisions, etc., may result in differences between the machine and what is presented here. For more information, contact SANY.

Table of Contents

Introduction

| | |
|--|------|
| About This Manual | 1-2 |
| Documentation Package | 1-3 |
| Operation and Maintenance Manual | 1-3 |
| Parts Manual | 1-3 |
| Maintenance Log | 1-3 |
| Organization of This Manual | 1-4 |
| Introduction | 1-4 |
| Safety | 1-4 |
| Machine Controls | 1-4 |
| Machine Operation | 1-4 |
| Maintenance | 1-4 |
| Specifications | 1-4 |
| Optional Equipment | 1-4 |
| Machine Applications | 1-5 |
| Machine Directions | 1-5 |
| Serial Number Locations | 1-6 |
| Product Identification Plate | 1-6 |
| Frame Serial Number | 1-6 |
| Swing Motor Identification Plate | 1-7 |
| Engine Identification Plate | 1-7 |
| Hydraulic Pump Identification Plate | 1-8 |
| Travel Motor Identification Plate | 1-8 |
| SANY Contact Information | 1-9 |
| Record of Serial Number and Dealer Information | 1-9 |
| Correction Request Form | 1-10 |
| Glossary of Acronyms | 1-11 |

Safety

| | |
|--|-----|
| General Safety | 2-3 |
| Hazard Alerts in This Manual | 2-3 |
| Machine Decals | 2-3 |
| Operator Safety Information | 2-4 |
| Mount and Dismount the Machine | 2-5 |
| Machine Safety | 2-6 |
| Authorized Use of This Machine | 2-6 |
| Unauthorized Use of This Machine | 2-6 |
| Unauthorized Machine Modifications | 2-6 |

TABLE OF CONTENTS
 INTRODUCTION
 SAFETY
 MACHINE CONTROLS
 MACHINE OPERATION
 MAINTENANCE
 SPECIFICATIONS
 OPTIONAL EQUIPMENT

| | |
|---|------|
| Escape Tool | 2-6 |
| Fire Safety | 2-6 |
| Electrical Fires | 2-7 |
| Fire Extinguisher | 2-7 |
| In Case of Fire | 2-7 |
| Crushing Hazard | 2-7 |
| Maintenance Safety | 2-8 |
| Lockout/Tagout Procedure | 2-8 |
| Cleaning the Machine | 2-9 |
| Fluid Systems | 2-9 |
| Adding Fluids to the Machine | 2-9 |
| Refueling | 2-9 |
| High-Pressure Fluid Lines | 2-9 |
| Accumulator | 2-10 |
| Electrical System | 2-10 |
| Battery Safety | 2-10 |
| Disconnect the Battery | 2-10 |
| Job Safety | 2-11 |
| Personal Protective Equipment (PPE) | 2-11 |
| Hearing Protection | 2-11 |
| Travel and Operation Precautions | 2-11 |
| Inclined Areas | 2-12 |
| Snow or Frozen Surfaces | 2-12 |
| Avoid Backup Accidents | 2-12 |
| Dust and Chemical Hazards | 2-13 |
| Environmental Precautions | 2-13 |
| Precautions in High-Voltage Areas | 2-13 |
| Diesel Engine Exhaust | 2-14 |

Machine Controls

| | |
|---|------|
| Machine Overview | 3-3 |
| Controls | 3-4 |
| Hydraulic Lockout Control Lever | 3-5 |
| Left Control Console | 3-6 |
| Left Joystick | 3-7 |
| Left Joystick Buttons | 3-7 |
| Right Control Console | 3-8 |
| Right Joystick | 3-8 |
| Right Joystick Buttons and Switch | 3-8 |
| Joystick Modes | 3-9 |
| SAE Mode | 3-10 |
| BHL Mode | 3-11 |
| Pattern Change (SAE/BHL) Valve | 3-12 |
| Return Flow Selector Valve | 3-13 |
| Switches | 3-14 |
| Key Switch | 3-14 |
| Throttle Control Dial | 3-15 |
| Work Light Switch | 3-15 |
| Windshield Wiper Switch | 3-16 |

| | |
|--|------|
| Windshield Washer Switch | 3-16 |
| Beacon Light Switch | 3-17 |
| Regeneration Inhibit Switch | 3-17 |
| Stationary Regeneration Switch. | 3-18 |
| Emergency Stop Switch. | 3-19 |
| Battery Disconnect Switch | 3-19 |
| Auxiliary Outlet (12V). | 3-20 |
| Travel Controls | 3-21 |
| Directional Arrow | 3-21 |
| Auto-idle Function | 3-22 |
| Radio | 3-23 |
| Radio Control Panel. | 3-23 |
| USB Input. | 3-23 |
| Auto Scan/Preset Station (AS/PS) button | 3-24 |
| AM/FM Selector Button | 3-24 |
| Audio Selector (SEL) Button | 3-24 |
| Time Button | 3-24 |
| Liquid Crystal Display (LCD) | 3-24 |
| Power Button | 3-24 |
| Volume Control Buttons | 3-24 |
| Tuning Buttons. | 3-25 |
| Preset Radio Station 6: USB Function—Select Next Folder | 3-25 |
| Preset Radio Station 5: USB Function—Select Previous Folder. | 3-25 |
| Preset Radio Station 4: USB Function—Shuffle Playback | 3-25 |
| Preset Radio Station 3: USB Function—Replay | 3-25 |
| Preset Radio Station 2: USB Function—Browse Selections | 3-26 |
| Preset Radio Station 1: USB Function—Play/Pause Button | 3-26 |
| Antenna | 3-26 |
| Climate Control Panel | 3-27 |
| Heating and Cooling System Operation. | 3-28 |
| Auto Mode | 3-28 |
| Cooling Mode. | 3-28 |
| Heating Mode. | 3-28 |
| Vent Mode Selection | 3-28 |
| Ventilation | 3-29 |
| Sunlight Sensor | 3-29 |
| Fuses. | 3-30 |
| Monitor. | 3-32 |
| Home Screen. | 3-32 |
| Home Screen Notification Icons. | 3-34 |
| Home Screen Function Icons and Buttons | 3-36 |
| Main Menu Screen. | 3-37 |
| Password Screen. | 3-38 |
| Work Parameters Screens. | 3-38 |
| Maintenance Information Screen | 3-39 |
| Error Codes Screen | 3-40 |
| System Setting Screen | 3-41 |
| Date/Time Setting Screen | 3-42 |
| Backlight Setting Screen | 3-43 |
| Data Unit Setting Screen. | 3-44 |

TABLE OF CONTENTS

INTRODUCTION

SAFETY

MACHINE CONTROLS

MACHINE OPERATION

MAINTENANCE

SPECIFICATIONS

OPTIONAL EQUIPMENT

| | |
|---------------------------------------|------|
| Time Format Screen | 3-45 |
| System Language Setup Screen. | 3-46 |
| Machine Configuration Screen. | 3-46 |
| Tool Select Screen. | 3-47 |
| Bucket | 3-47 |
| Breaker Screen | 3-48 |
| Shear Screen | 3-49 |

Machine Operation

| | |
|---|------|
| Work Area | 4-4 |
| General Job Safety | 4-4 |
| Operator Responsibilities | 4-4 |
| Seat Belt Usage | 4-5 |
| Operation and Maintenance Manual Check. | 4-5 |
| Daily Maintenance Record Check | 4-5 |
| Cleaning the Machine | 4-5 |
| Cleaning the Cab Interior | 4-5 |
| Doors, Panels, Hatch, and Filler Caps. | 4-6 |
| Cab Door | 4-6 |
| Emergency Escape Hatch | 4-7 |
| Door Support Rod | 4-7 |
| Right Front Access Door | 4-7 |
| Opening the Right Front Access Door | 4-7 |
| Closing the Right Front Access Door. | 4-7 |
| Right Rear Access Door. | 4-8 |
| Opening the Right Rear Access Door | 4-8 |
| Closing the Right Rear Access Door | 4-8 |
| Left Front Access Door | 4-8 |
| Opening the Left Front Access Door | 4-9 |
| Closing the Left Front Access Door | 4-9 |
| Left Rear Access Door. | 4-9 |
| Opening the Left Rear Access Door | 4-10 |
| Closing the Left Rear Access Door | 4-10 |
| Fresh-Air Filter Access Door | 4-10 |
| Engine Compartment Door | 4-10 |
| Opening the Engine Compartment Door | 4-11 |
| Closing the Engine Compartment Door | 4-11 |
| Fuel Tank Filler Cap. | 4-11 |
| Remove the Cap | 4-12 |
| Install the Cap | 4-12 |
| Diesel Exhaust Fluid (DEF) Tank Filler Cap. | 4-12 |
| Remove and Install the Cap. | 4-12 |
| Seat and Seat Belt. | 4-13 |
| Seat Belt | 4-14 |
| New Machine Break-in. | 4-15 |
| Prestart Checks and Adjustments | 4-16 |
| Check the Pattern Change (SAE/BHL) Valve | 4-17 |
| Interior | 4-18 |
| Cab | 4-18 |

| | |
|--|------|
| Daily Maintenance Record | 4-18 |
| Windshield Locks | 4-18 |
| Mirrors | 4-19 |
| Backup Camera | 4-19 |
| Operator Controls | 4-19 |
| Lights and Warning Devices | 4-20 |
| Fire Extinguisher | 4-21 |
| Escape Tool | 4-21 |
| Initial Monitor Settings | 4-22 |
| Language Selection | 4-22 |
| System Clock Calibration | 4-22 |
| Data Unit Setting | 4-22 |
| Starting the Engine | 4-23 |
| Idle the Engine | 4-26 |
| Machine Warm-up | 4-26 |
| Engine Shutdown Procedure | 4-27 |
| Jump-Start the Engine | 4-28 |
| Travel Operations | 4-30 |
| Before Travel | 4-30 |
| Track Direction | 4-31 |
| Travel with the Undercarriage Reversed | 4-32 |
| Forward Travel | 4-32 |
| Backward Travel | 4-32 |
| Right Turn | 4-32 |
| Left Turn | 4-33 |
| Spot Turning | 4-33 |
| To the Left | 4-33 |
| To the Right | 4-33 |
| Operating on Inclines | 4-34 |
| Operating in Water | 4-35 |
| Releasing the Machine from Mud | 4-35 |
| One Track Stuck | 4-35 |
| Two Tracks Stuck | 4-36 |
| Towing the Machine | 4-36 |
| Towing Point for a Light Load | 4-37 |
| Control Work Equipment | 4-38 |
| SAE Control Pattern | 4-38 |
| Arm Control–SAE Mode | 4-38 |
| Boom Control–SAE Mode | 4-38 |
| Swing Control | 4-39 |
| Bucket Control | 4-39 |
| BHL Control Pattern | 4-39 |
| Arm Control–BHL Mode | 4-39 |
| Boom Control–BHL Mode | 4-40 |
| Swing | 4-40 |
| Bucket | 4-40 |
| Recommended Applications | 4-41 |
| Backhoe Operation | 4-41 |
| Trenching Operation | 4-42 |
| Loading Operation | 4-42 |
| End of Workday Checks | 4-42 |

TABLE OF CONTENTS

INTRODUCTION

SAFETY

MACHINE CONTROLS

MACHINE OPERATION

MAINTENANCE

SPECIFICATIONS

OPTIONAL EQUIPMENT

| | |
|---|------|
| Manual Regeneration | 4-43 |
| Bucket | 4-46 |
| Replace the Bucket Teeth | 4-46 |
| Replace the Bucket | 4-47 |
| Remove the Bucket | 4-48 |
| Install the Bucket | 4-48 |
| Cold Weather Operation | 4-49 |
| Battery in Cold Weather | 4-49 |
| Engine Lubricants, Fuel, and Engine Coolant in Cold Weather | 4-49 |
| Track Cleaning in Cold Weather | 4-50 |
| After the Cold Weather Season | 4-50 |
| Machine Storage in Cold Weather | 4-50 |
| Park and Store the Machine | 4-51 |
| Overnight Storage | 4-51 |
| Short-Term Storage | 4-52 |
| Long-Term Storage | 4-52 |
| Preparation | 4-52 |
| Maintenance During Storage | 4-53 |
| Return to Service | 4-54 |
| Transportation Information | 4-54 |
| Loading the Machine | 4-55 |
| Unloading the Machine | 4-59 |
| Lift the Machine | 4-61 |

Maintenance

| | |
|--|-----|
| Maintenance Information | 5-5 |
| Checks Before Maintenance | 5-5 |
| Checks After Maintenance or Repairs | 5-5 |
| Hour Meter Reading | 5-5 |
| Genuine SANY Replacement Parts | 5-5 |
| SANY-Approved Lubricants | 5-6 |
| Oil and Filter Inspection | 5-6 |
| Collect an Engine Oil Sample | 5-6 |
| Fuel Tank Strainer | 5-6 |
| Preventing Contamination | 5-6 |
| Securing Access Covers and Compartment Doors | 5-6 |
| Cleaning the Machine | 5-6 |
| Weld, Drill, Cut, or Grind on the Machine | 5-7 |
| Inspection and Maintenance for Severe Operating Conditions | 5-7 |
| Mud, Rain, or Snow Conditions | 5-7 |
| Near Ocean (Salt Air) Environments | 5-7 |
| Dusty Environments | 5-8 |
| Cold Environments | 5-8 |
| Other Weather Environments | 5-8 |
| Check the Maintenance Log | 5-8 |
| Fluids and Lubricants | 5-9 |
| Hydraulic Oil Description | 5-9 |
| Lubrication and Grease | 5-9 |
| Windshield Washer Fluid | 5-9 |

| | |
|--|------|
| Diesel Exhaust Fluid (DEF) | 5-9 |
| Fuel | 5-10 |
| Engine Coolant | 5-10 |
| Engine Oil Viscosity/Temperature Data | 5-11 |
| Lubricating Grease/Temperature Data | 5-11 |
| Industrial Gear Oil/Temperature Data | 5-11 |
| Hydraulic Oil/Temperature Data | 5-12 |
| Capacities | 5-13 |
| SY365C LC Capacities | 5-13 |
| Other Approved Products | 5-13 |
| Maintenance Schedule | 5-14 |
| Secure the Machine for Maintenance | 5-14 |
| Daily Inspection and Maintenance | 5-14 |
| Check for loose or missing fasteners and components | 5-15 |
| When Required | 5-15 |
| Daily or Every 10 Hours | 5-15 |
| After the First 50 Hours | 5-16 |
| Weekly or Every 50 Hours | 5-16 |
| Monthly or Every 250 Hours | 5-17 |
| Every 3 Months or 500 Hours | 5-17 |
| Every 6 Months or 1000 Hours | 5-18 |
| Annually or Every 2000 Hours | 5-18 |
| Hydraulic Breaker Maintenance Interval | 5-19 |
| After Maintenance is Completed | 5-19 |
| Maintenance Procedures | 5-20 |
| Fluid Level Checks | 5-20 |
| Check the Engine Coolant Level | 5-20 |
| Fill the Engine Coolant | 5-21 |
| Check the Engine Oil Level | 5-22 |
| Add Engine Oil | 5-23 |
| Check the Fuel Level | 5-25 |
| Fill the Fuel Tank | 5-25 |
| Check the Diesel Exhaust Fluid (DEF) Level | 5-26 |
| Fill the Diesel Exhaust Fluid (DEF) Tank | 5-27 |
| Drain the Primary Fuel Filter | 5-28 |
| Check the Hydraulic Oil Level | 5-29 |
| Check the Windshield Washer Fluid and Windshield Wiper | 5-30 |
| Engine Inspection and Maintenance | 5-31 |
| Engine Inspection | 5-31 |
| Check the Crankcase Breather Tube | 5-31 |
| Replace the Crankcase Breather | 5-32 |
| Check and Replace the Engine Air Filter System | 5-34 |
| Check the Air Intake and Charge-Air Pipes | 5-36 |
| Change the Engine Oil and Filter | 5-36 |
| Inspect the Engine Serpentine Belt | 5-39 |
| Check the Alternator | 5-40 |
| Check the Starter | 5-40 |
| Check the Aftertreatment Exhaust Piping | 5-41 |
| Check the Engine Exhaust Pipe Clamps | 5-42 |
| Engine Cooling System | 5-43 |
| Change the Engine Coolant | 5-43 |

TABLE OF CONTENTS

INTRODUCTION

SAFETY

MACHINE CONTROLS

MACHINE OPERATION

MAINTENANCE

SPECIFICATIONS

OPTIONAL EQUIPMENT

| | |
|--|------|
| Check the Radiator, Oil Cooler, Charge-Air Cooler, and Air Conditioner Condenser | 5-45 |
| Inspect the Engine Coolant Pump | 5-45 |
| Heating and Air Conditioning System | 5-46 |
| Check the Air Conditioning Operation | 5-46 |
| Check the Air Conditioner Compressor Belt | 5-46 |
| Adjust the Air Conditioner Compressor Belt Tension | 5-47 |
| Check the Air Conditioner Fresh-Air and Recirculated-Air Filters | 5-48 |
| Fresh-Air Filter | 5-48 |
| Recirculated-Air Filter | 5-48 |
| Exhaust System | 5-49 |
| Check the Exhaust System | 5-49 |
| Replace the Diesel Exhaust Fluid (DEF) Pump Filter | 5-50 |
| Replace the Diesel Exhaust Fluid (DEF) Tank Filter | 5-51 |
| Fuel System | 5-53 |
| Check the Fuel Lines | 5-53 |
| Drain the Fuel Tank | 5-53 |
| Replace the Primary Fuel Filter | 5-54 |
| Replace the Secondary Fuel Filter | 5-55 |
| Check the Fuel Tank Strainer | 5-56 |
| Electrical System | 5-56 |
| Check the Backup Camera | 5-56 |
| Disconnect the Electrical Power | 5-57 |
| Check the Electrical System | 5-58 |
| Check the Batteries | 5-58 |
| Replace the Batteries | 5-60 |
| Check the Fuses | 5-61 |
| Hydraulic System | 5-62 |
| Inspect the Accumulator | 5-62 |
| Check the Accumulator Function | 5-62 |
| Relieve Hydraulic System Pressure | 5-63 |
| Add Hydraulic Oil | 5-64 |
| Replace the Hydraulic System Breather Filter | 5-65 |
| Replace the Hydraulic Pilot Filter Element | 5-66 |
| Replace the Hydraulic Tank Return Filter | 5-68 |
| Clean/Replace the Hydraulic Oil Suction Strainer | 5-69 |
| Check the Hydraulic Hoses and Lines | 5-71 |
| Change the Hydraulic Oil | 5-71 |
| Check the Hydraulic Pump | 5-76 |
| Check the Hydraulic Pump Mounting Fasteners | 5-76 |
| Track Frame Assembly | 5-77 |
| Check the Track Shoes | 5-77 |
| Check the Track Shoe Fasteners | 5-77 |
| Check the Idler | 5-78 |
| Check the Top Rollers | 5-79 |
| Check the Top Rollers Fasteners | 5-79 |
| Check and Adjust Track Tension | 5-79 |
| Check Track Tension | 5-79 |
| Increase Track Tension | 5-81 |
| Decrease Track Tension | 5-82 |
| Final Drive | 5-83 |

| | |
|---|-------|
| Check the Final Drive | 5-83 |
| Check the Final Drive Oil Level | 5-84 |
| Change the Final Drive Oil | 5-85 |
| Swing Drive | 5-86 |
| Lubricate the Swing Drive Bearing | 5-86 |
| Check the Swing Drive Oil Level | 5-86 |
| Change the Swing Drive Oil | 5-87 |
| Check the Swing Drive Mounting Fasteners | 5-89 |
| Check the Swing Bearing Fasteners | 5-90 |
| Check the Swing Grease Bath Level | 5-90 |
| Collect Oil Samples | 5-91 |
| Collect an Engine Oil Sample | 5-91 |
| Collect a Hydraulic Oil Sample | 5-92 |
| Collect a Final Drive Oil Sample | 5-92 |
| Collect a Swing Drive Oil Sample | 5-93 |
| Lubrication | 5-94 |
| Lubrication Points | 5-94 |
| Boom Cylinder Base Ends | 5-95 |
| Swing Bearing Fittings | 5-95 |
| Swing Gear | 5-96 |
| Boom Pins | 5-96 |
| Boom Cylinder Rod End | 5-96 |
| Arm Cylinder Head End | 5-97 |
| Arm Cylinder Rod End | 5-97 |
| Arm-to-Boom Pin | 5-98 |
| Bucket Cylinder Head End | 5-98 |
| Bucket Linkages | 5-99 |
| Bucket | 5-99 |
| Lubricate the Cab Door Hinges and Front Window Slide Rail | 5-100 |
| Cab | 5-101 |
| Check the Grab Handles and Steps | 5-101 |
| Check Doors and Locks | 5-101 |
| Check the Decals | 5-101 |
| Check the Sheet Metal | 5-101 |
| Clean and Check the Upper Structure and Undercarriage | 5-102 |
| Perform a Structural Inspection | 5-102 |
| Inspect Windshield Wiper and Washer Nozzle | 5-102 |
| Bucket | 5-103 |
| Replace the Bucket Teeth | 5-103 |

Specifications

| | |
|------------------------------------|-----|
| Machine Dimensions | 6-2 |
| Operating Ranges | 6-4 |
| Technical Specifications | 6-6 |
| Lift Chart | 6-7 |

Optional Equipment

| | |
|--|-----|
| Optional Equipment Selection | 7-2 |
|--|-----|

TABLE OF CONTENTS
 INTRODUCTION
 SAFETY
 MACHINE CONTROLS
 MACHINE OPERATION
 MAINTENANCE
 SPECIFICATIONS
 OPTIONAL EQUIPMENT

| | |
|--|-----|
| Read Equipment Instructions | 7-2 |
| Installation and Removal Precautions | 7-2 |
| Equipment Operation Precautions | 7-3 |
| Optional Equipment System Functions | 7-4 |
| Equipment Controls | 7-4 |
| Stop Valves | 7-4 |
| Return Flow Selector Valve | 7-5 |
| Monitor Tool Selection | 7-5 |
| Install Optional Equipment | 7-6 |
| Remove Optional Equipment | 7-7 |
| Optional Equipment Controls | 7-8 |
| Breaker Control | 7-8 |
| Shear Control | 7-9 |



Introduction

| | |
|--|------|
| About This Manual | 1-2 |
| Documentation Package | 1-3 |
| Operation and Maintenance Manual | 1-3 |
| Parts Manual | 1-3 |
| Maintenance Log | 1-3 |
| Organization of This Manual | 1-4 |
| Introduction | 1-4 |
| Safety | 1-4 |
| Machine Controls | 1-4 |
| Machine Operation | 1-4 |
| Maintenance | 1-4 |
| Specifications | 1-4 |
| Optional Equipment | 1-4 |
| Machine Applications | 1-5 |
| Machine Directions | 1-5 |
| Serial Number Locations | 1-6 |
| Product Identification Plate | 1-6 |
| Frame Serial Number | 1-6 |
| Swing Motor Identification Plate | 1-7 |
| Engine Identification Plate | 1-7 |
| Hydraulic Pump Identification Plate | 1-8 |
| Travel Motor Identification Plate | 1-8 |
| SANY Contact Information | 1-9 |
| Record of Serial Number and Dealer Information | 1-9 |
| Correction Request Form | 1-10 |
| Glossary of Acronyms | 1-11 |

ABOUT THIS MANUAL

This manual provides operation and maintenance information for the SY365C LC excavator.



WARNING!

Unsafe operation and maintenance of this machine could result in death or serious injury. This machine must be operated and maintained by trained and experienced personnel. Do not operate or work on this machine without first reading and understanding this Operation and Maintenance Manual supplied with the machine.

It is important to read and understand this manual before beginning any operation or service. All personnel involved with this machine should read this manual periodically to remain knowledgeable on its operation and service.

Items addressed in this manual are designed to help the operator or service personnel:

- Understand the controls and operation of the machine.
- Point out possible hazardous situations when operating or maintaining the machine.
- Increase machine efficiency during operation.
- Prolong the service life of the machine.
- Reduce maintenance costs.

Continuing improvements in the design of this machine can lead to changes which may not be covered in this manual. Contact a SANY dealer for the latest available information on the machine or to answer any questions regarding information in this manual.

DOCUMENTATION PACKAGE

This documentation applies only to this machine and should not be used with any other machine. The documentation for this machine includes the following items:

Operation and Maintenance Manual

A copy of this manual must be stored in the machine or be accessible to the operator at all times. If the machine is sold, a copy of this manual must be provided to the new owner.

A copy of the Operation and Maintenance Manual should be made available to maintenance personnel when servicing the machine.

Parts Manual

This publication consists of parts lists and matching drawings for ordering spare parts as needed. If it was not shipped with your machine, the parts manual for your machine is available directly from SANY dealer.

Maintenance Log

The Maintenance Log lists regularly scheduled maintenance that should be performed by the operator or service personnel. All maintenance performed on the machine must be recorded in the Maintenance Log.

ORGANIZATION OF THIS MANUAL

Introduction

Contains an overview of this manual, serial number information, and SANY contact information.

Safety

Hazard alerts used throughout the manual are explained. General and product-specific safety information is provided for this manual.

Machine Controls

An overview of controls and the operating systems is provided in this section.

Machine Operation

Detailed prestart checks, operating procedures, end-of-day checks, general operating instructions, and storage information.

Maintenance

Provides routine maintenance procedures and fluid specifications.

Specifications

General dimensions, weight of the machine, and systems/components performance information.

Optional Equipment

Provides general hydraulic installation and removal information on the optional equipment.

MACHINE APPLICATIONS

This excavator is a multipurpose construction machine used primarily for digging or loading earth and stones. It can also be used for lifting, breaking, demolishing, and trenching. It can perform the functions of a loader and a crane.

This excavator can also operate a variety of optional equipment.

SANY assumes no responsibility for any consequence caused by use outside this specified range.

Machine Directions

In this manual, the front, back, left, and right directions indicate the moving direction when viewed from the operator seat (see Fig. 1-1).

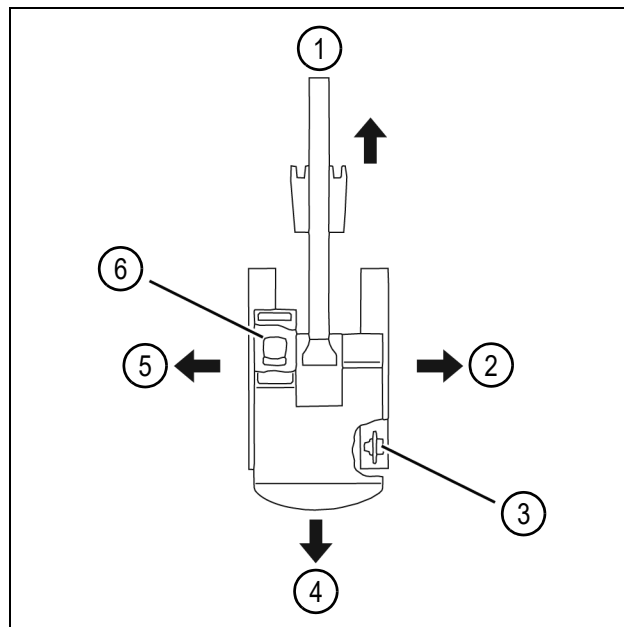


Fig. 1-1

0003137

- | | |
|-------------|------------------|
| 1) Front | 4) Back |
| 2) Right | 5) Left |
| 3) Sprocket | 6) Operator seat |

SERIAL NUMBER LOCATIONS

Identification plates are located in various places on the excavator. These list model and serial numbers that will be needed by a SANY dealer when ordering replacement parts or providing assistance for your machine.

Product Identification Plate

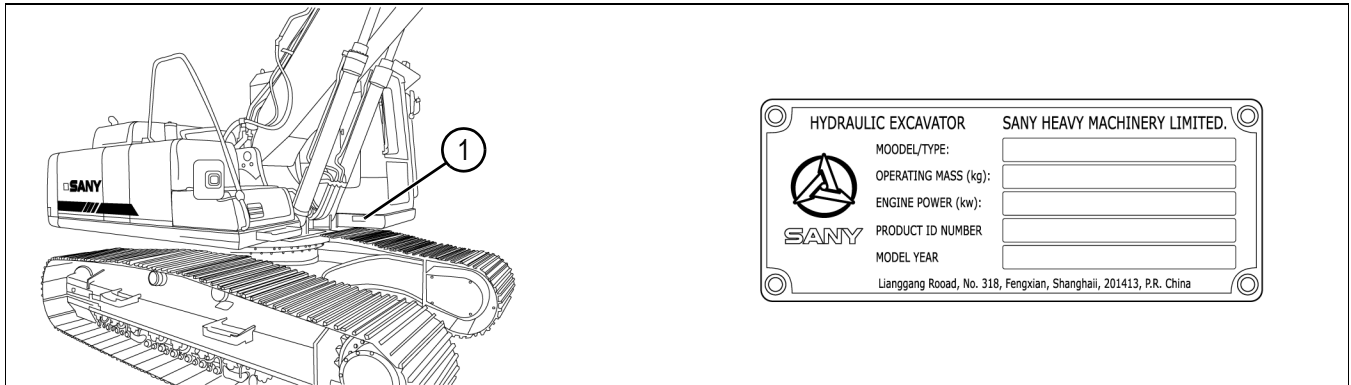


Fig. 1-2

0005197

The identification plate (1) is on the lower right side of the cab.

Frame Serial Number

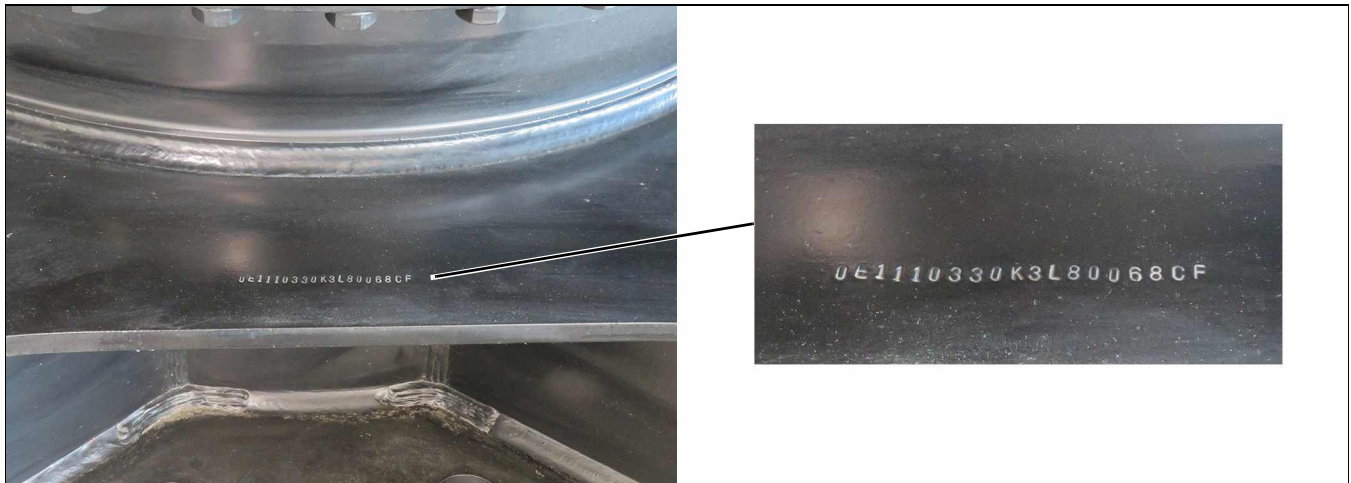


Fig. 1-3

0005198

The frame serial number is stamped on the front of the travel carriage frame.

Swing Motor Identification Plate

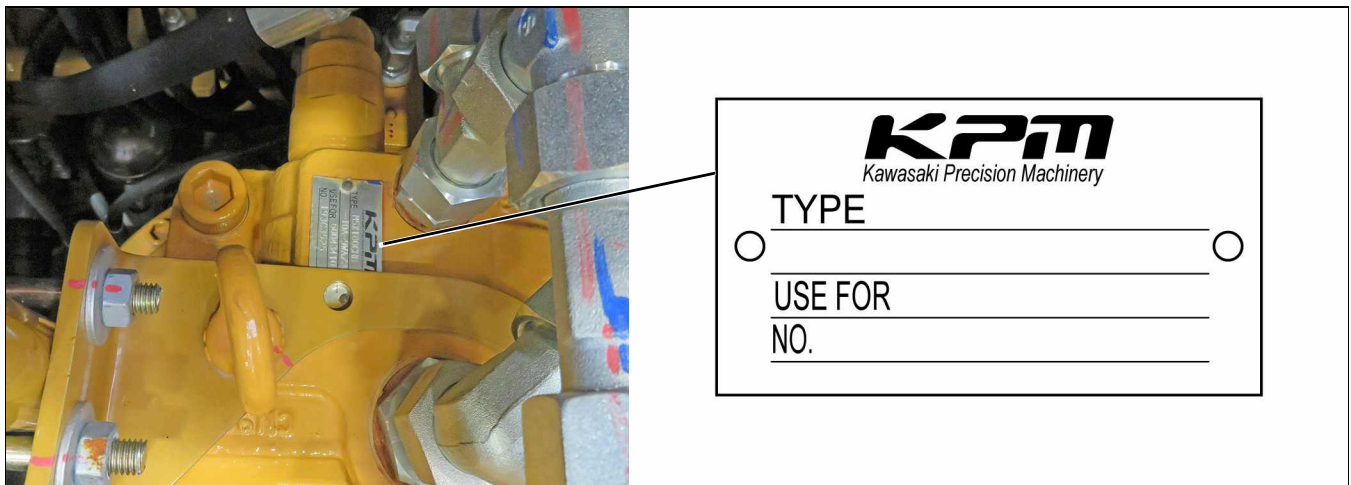


Fig. 1-4

0005199

The swing motor identification plate is on top of the swing motor.

Engine Identification Plate

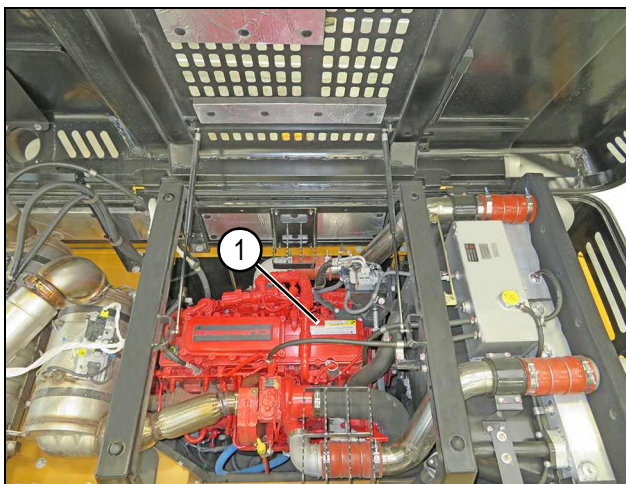


Fig. 1-5

0005185

The engine identification plate (1) is on the top of the engine.

Hydraulic Pump Identification Plate

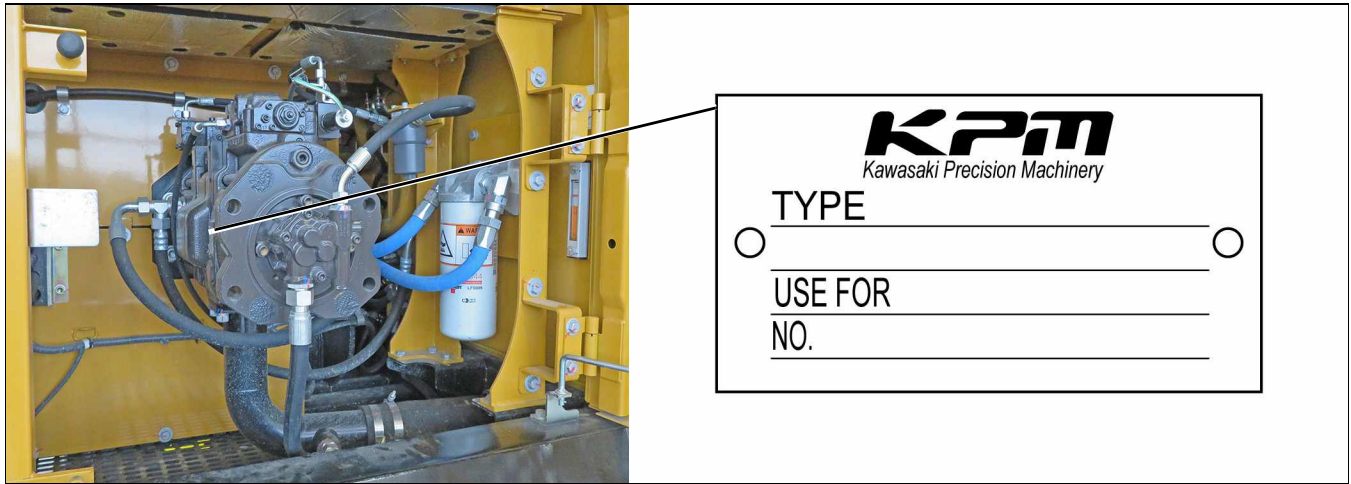


Fig. 1-6

0005200

The hydraulic pump identification plate is located on the side of the hydraulic pump.

Travel Motor Identification Plate

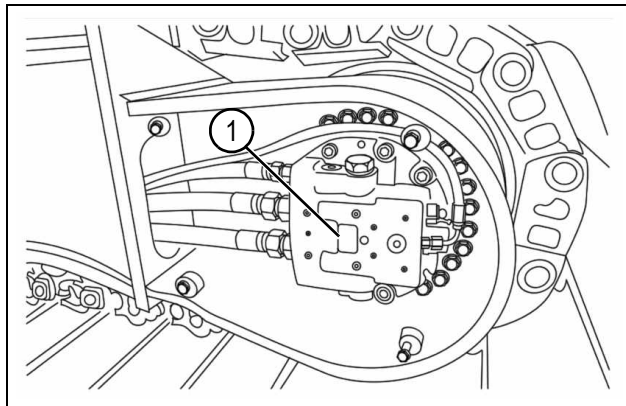


Fig. 1-7

0000802

A travel motor identification plate (1) is located on each travel motor. Remove the cover plate to access the travel motor.

SANY CONTACT INFORMATION

SANY
 318 Cooper Circle
 Peachtree City, GA 30269
 www.sanyamerica.com
 Phone: 470 552 SANY (7269)
 To find a dealer, go to: www.sanyamerica.com/find-a-dealer

RECORD OF SERIAL NUMBER AND DEALER INFORMATION

| | |
|---|--|
| Use this table to record the product information related to this machine. | |
| Machine Serial Number | |
| Engine Serial Number | |
| Right Travel Motor Serial Number | |
| Left Travel Motor Serial Number | |
| Swing Motor Serial Number | |
| Hydraulic Pump Serial Number | |
| Dealer Name: | |
| Address: | |
| Phone Numbers: | |

CORRECTION REQUEST FORM

If you find a problem with this manual, make a copy of this page, complete the form below, and send it to SANY.

| Correction Request Form |
|--|
| Date of this notification |
| Your name |
| Company name |
| Department |
| Street address |
| City, State, and ZIP/Postal Code |
| Phone |
| E-mail |
| Machine model and serial number |
| Description of problem (wrong information, unclear or erroneous procedure, etc.) |
| Corrective action taken (if any) |

GLOSSARY OF ACRONYMS

ANSI – American National Standards Institute

BHL – Backhoe Loader

DEF – Diesel Exhaust Fluid

DPF – Diesel Particulate Filter

EAT– Exhaust Aftertreatment

ECM – Engine Control Module

GPS – Global Positioning System

HCU – Hydraulic Control Unit

HEST – High Exhaust System Temperatures

ISO – International Organization for Standardization

LCD – Liquid Crystal Display

OEM – Original Equipment Manufacturer

OSHA – Occupational Safety and Health Administration

PPE – Personal Protective Equipment

PQR – Procedure Qualification Report

ROPS – Rollover Protective Structure

SAE – See SAE International (Formerly known as Society of Automotive Engineers)

SDS – Safety Data Sheet

WPS – Weld Procedure Specification

This Page Intentionally Left Blank

SANY

Safety

| | |
|---|------|
| General Safety | 2-3 |
| Hazard Alerts in This Manual | 2-3 |
| Machine Decals | 2-3 |
| Operator Safety Information | 2-4 |
| Mount and Dismount the Machine | 2-5 |
| Machine Safety | 2-6 |
| Authorized Use of This Machine | 2-6 |
| Unauthorized Use of This Machine | 2-6 |
| Unauthorized Machine Modifications | 2-6 |
| Escape Tool | 2-6 |
| Fire Safety | 2-6 |
| Electrical Fires | 2-7 |
| Fire Extinguisher | 2-7 |
| In Case of Fire | 2-7 |
| Crushing Hazard | 2-7 |
| Maintenance Safety | 2-8 |
| Lockout/Tagout Procedure | 2-8 |
| Cleaning the Machine | 2-9 |
| Fluid Systems | 2-9 |
| Adding Fluids to the Machine | 2-9 |
| Refueling | 2-9 |
| High-Pressure Fluid Lines | 2-9 |
| Accumulator | 2-10 |
| Electrical System | 2-10 |
| Battery Safety | 2-10 |
| Disconnect the Battery | 2-10 |
| Job Safety | 2-11 |
| Personal Protective Equipment (PPE) | 2-11 |
| Hearing Protection | 2-11 |
| Travel and Operation Precautions | 2-11 |
| Inclined Areas | 2-12 |
| Snow or Frozen Surfaces | 2-12 |

| | |
|---|------|
| Avoid Backup Accidents | 2-12 |
| Dust and Chemical Hazards | 2-13 |
| Environmental Precautions | 2-13 |
| Precautions in High-Voltage Areas | 2-13 |
| Diesel Engine Exhaust | 2-14 |

GENERAL SAFETY

This section provides detailed information on basic safety precautions and preventive measures that should be followed during the operation and maintenance of this machine.

Hazard Alerts in This Manual

Hazard alerts in this manual are used to alert operators, job supervisors, maintenance staff, and job-site workers to hazardous operating practices and maintenance procedures. Hazard alerts are used throughout this manual. Each hazard alert contains a hazard alert symbol and a signal word to identify the hazard's degree of consequence if the message is ignored.

The following American National Standards Institute (ANSI) and International Organization for Standardization (ISO) signal words are used to warn of potentially hazardous situations that may lead to damage, personal injury, or even death. In this manual and on the machine decals, different signal words or illustrations are used to express the potential level of hazard.



DANGER!

DANGER indicates a hazardous situation which, if not avoided, will result in death or serious injury.



WARNING!

WARNING indicates a hazardous situation which, if not avoided, could result in death or serious injury.



CAUTION!

CAUTION indicates a hazardous situation which, if not avoided, could result in injury.

NOTICE!

NOTICE is used to address practices not related to personal injury.



This symbol is used within a graphic to alert the user not to do something.

Machine Decals

All safety and warning decals must be in place, undamaged, and visible. Become familiar with the location and content of all decals on the machine. Walk around the machine and review each of them. Decals provide important instructions and warnings, and must be read and understood prior to any operational or maintenance function.

Contact a SANY dealer for replacement decals if needed.

NOTE: When replacing decals, make sure they are placed in the proper locations. Contact a SANY dealer if you have any questions about their meaning and placement.

OPERATOR SAFETY INFORMATION

It is impossible to compile a list of safety precautions that covers every situation. However, there are basic principles which must be followed when operating this machine:

- Only qualified personnel who have been specifically trained on this machine are permitted to operate and/or work on this machine.
- The seat belt must be worn by the operator at all times.
- Operator aids such as warning lights, horns, or buzzers, along with displays on the monitors, are designed to alert the operator to potential problems. Sole reliance on these operator aids in place of good operating practices can lead to an accident. Inspect the operator aids of this machine daily and make sure each operator aid is in normal working condition. Any faults found shall be reported to a SANY dealer. Stop all work immediately if any operator aid is not working properly.
- All accident prevention guidelines, operating instructions, etc., are based on the intended usage of the machine.
- Read and understand this manual and any accompanying manuals before operating this machine.
- This manual must be readily available to the operator at all times and must remain in the cab while the machine is in use.
- Make sure all personnel in the working area around the machine are thoroughly familiar with the safe operating practices stated in this manual.
- Review the local, state, and federal regulations and standards regarding this machine and its operation. Work practice requirements may vary among government regulations, industry standards, and employer policies. A thorough knowledge of all such relevant work rules is required before operating this machine or performing maintenance on it.
- Check the Maintenance Log before the start of each workday shift. Make sure routine maintenance has been performed as stated in this manual. Do not operate a damaged or improperly maintained machine.
- Only the operator is to be on the machine while it is in operation.
- Be sure all underground utilities have been marked before excavating.

This as a preview PDF file from best-manuals.com



Download full PDF manual at best-manuals.com