

# MF 7100

Series Tractors

Models: MF7150



MASSEY FERGUSON



# PARTS CATALOG

# CONTENT

<b>TABLE OF CONTENT</b> .....	<b>2</b>
<b>ENGINE, FUEL AND EXHAUST SYSTEM</b> .....	<b>3</b>
ENGINE .....	4
STARTING HEATER .....	6
AIR CLEANER .....	7
EXHAUST .....	10
COOLING SYSTEM .....	13
COOLER .....	15
FUEL TANK .....	16
FUEL TANK RIGHT HAND .....	20
FUEL TANK LEFT HAND .....	22
FUEL TANK .....	24
FUEL TANK LEFT SIDE .....	26
FUEL TANK .....	27
TANK BREATHER .....	29
FUEL TANK .....	30
FUEL TANK RIGHT SIDE .....	31
CYLINDER BLOCK .....	32
GEAR HOUSING .....	34
FLYWHEEL AND HOUSING .....	35
STARTER .....	36
CRANKSHAFT .....	37
VALVE MECHANISM .....	38
CYLINDER HEAD .....	39
INDUCTION MANIFOLD .....	40
TURBOCHARGER FEEDER .....	41
CRANKCASE .....	42
OIL FILTER .....	44
WATER PUMP .....	45
INJECTION PUMP .....	46
FUEL FILTER .....	47
SEDIMENTATION FILTER .....	48
ALTERNATOR .....	49

STARTER MOTOR .....	50
ENGINE REPAIR PARTS.....	51
CYLINDER BLOCK .....	52
GEAR HOUSING .....	53
FLYWHEEL AND HOUSING .....	54
CRANKSHAFT MECHANISM .....	55
VALVES MECHANISM .....	57
CYLINDER HEAD .....	58
INDUCTION MANIFOLD AND EXHAUST .....	59
TURBOCHARGER FEEDER .....	60
SUMP .....	61
OIL FILTER .....	62
COOLANT PUMP.....	63
INJECTION PUMP.....	65
SEDIMENTATION FILTER .....	66
FUEL FILTER .....	67
ALTERNATOR .....	68
STARTER MOTOR .....	69
ENGINE OVERHAUL KITS .....	70
<b>AXLES .....</b>	<b>71</b>
AXLES .....	71
02-0037 FRONT AXLE ZF AS 3065 .....	71
REAR AXLE .....	72
REAR AXLE AND DIFERENTIAL .....	76
CENTRAL FRAME.....	78
PINION AND DIFERENTIAL .....	79
COVER.....	80
LUBRIFICATING OIL DIPSTICK.....	81
REAR AXLE .....	82
SHAFT .....	83
SLEEVE.....	84
FASTENER REAR AXLE TRANSMISSON .....	85
REAR AXLE .....	86
REAR AXLE AND DIFERENTIAL .....	90
REAR AXLE .....	92
BRAKE SUPPORT LEFT HAND.....	99

BRAKE SUPPORT RIGHT HAND .....	100
BRAKE .....	101
BRAKE OIL COOLED .....	102
BRAKE DRIVE .....	103
GEAR HOLDER .....	104
MASTER CYLINDER .....	105
FRONT AXLE .....	106
FRONT AXLE 4 WHEELS DRIVE .....	107
FRONT AXLE ZF-AS3065 3M .....	109
BEARING SET .....	110
FRONT AXLE .....	111
<b>STEERING SYSTEM .....</b>	<b>131</b>
STEERING WHEEL AND COLUMN .....	132
MASTER .....	133
FLYWHEEL .....	134
STEERING WHEEL AND COLUMN .....	135
<b>DRIVE TRAIN SYSTEM .....</b>	<b>137</b>
CLUTCH .....	138
CLUTCH DOUBLE DISC .....	139
TRANSMISSION .....	140
TRANSMISSION LINK HOUSING .....	142
SHIFT LEVER .....	143
TRANSMISSION .....	145
12 SPEED TRANSMISSION TDP (540/1000 RPM) .....	146
TRANSMISSION .....	148
TRANSMISSION 12X5 SPEEDS 540/1000 T-640 .....	161
<b>HYDRAULIC SYSTEM .....</b>	<b>174</b>
HYDRAULIC SYSTEM .....	174
HYDRAULIC LIFT COVER WITH HYDROTRONIC .....	175
AUXILIAR HYDRAULIC CYLINDER .....	177
TELESCOPIC STABILISER .....	178
COVER WITHOUT LIFT .....	179
HYDRAULIC CYLINDER LIFT .....	180
HYDRAULIC LIFT COVER .....	181
HYDRAULIC ARMS LEFT HAND .....	182
HYDRAULIC ARMS RIGHT HAND .....	183

COVER .....	184
TELESCOPIC STABILISER .....	185
STEERING SYSTEM .....	186
HYDROSTATIC STEERING .....	187
STEERING COLMN .....	189
MASTER CYLINDER .....	190
STEERING HYDRAULIC LINES .....	191
HYDRAULIC STEERING PUMP AND REMOTE CONTR .....	192
OIL RADIATOR .....	194
REMOTE CONTROL .....	197
INTAKE .....	207
REMOTE CONTROL .....	208
UP TO SERIAL NUMBER CC001137/ WITH CAB / 3 BODDYS / WITH HYDRAULIC .....	210
REMOTE CONTROL .....	210
UP TO SERIAL NUMBER CC001137/ WITH CAB / 3 BODDYS / WITH HYDRAULIC .....	211
REMOTE CONTROL .....	211
UP TO SERIAL NUMBER CC001137/ WITH CAB / 3 BODDYS / WITH HYDRAULIC .....	212
UP TO SERIAL NUMBER CC001137/ WITH PLATFORM / 3 BO DDYS / WITH .....	213
REMOTE CONTROL .....	213
UP TO SERIAL NUMBER CC001137/ WITH PLATFORM / 3 BO DDYS / WITH .....	215
REMOTE CONTROL .....	215
UP TO SERIAL NUMBER CC001137/ WITH PLATFORM / 3 BO DDYS / WITH .....	216
UP TO SERIAL NUMBER CC001137/ WITH CAB / 3 BODDYS / WITHOUT .....	217
REMOTE CONTROL .....	217
UP TO SERIAL NUMBER CC001137/ WITH CAB / 3 BODDYS / WITHOUT .....	218
REMOTE CONTROL .....	219
UP TO SERIAL NUMBER CC001137/ WITH PLATFORM / 3 BO DDYS / WITHOUT .....	220
REMOTE CONTROL .....	220
UP TO SERIAL NUMBER CC001137/ WITH PLATFORM / 3 BO DDYS / WITHOUT .....	221
REMOTE CONTROL .....	222
FROM SERIAL CC000332/WITH PLATFORM / 4 BODDYS / WITH HYDRAULIC .....	225
REMOTE CONTROL .....	225
FROM SERIAL CC000332/WITH PLATFORM / 4 BODDYS / WITH HYDRAULIC .....	226
FROM SERIAL CC000332/WITH CAB / 4 BODDYS / WITHOUT HYDRAULIC .....	227
REMOTE CONTROL .....	227
FROM SERIAL CC000332/WITH CAB / 4 BODDYS / WITHOUT HYDRAULIC .....	228

FROM SERIAL CC000332/WITH PLATFORM / 4 BODDYS / WITHOUT HYDRAULIC .....	229
REMOTE CONTROL .....	229
FROM SERIAL CC000332/WITH PLATFORM / 3 BODDYS / WITH HYDRAULIC .....	232
REMOTE CONTROL .....	232
FROM SERIAL CC000332/WITH PLATFORM / 3 BODDYS / WITH HYDRAULIC .....	233
FROM SERIAL CC000332/WITH CAB / 3 BODDYS / WITHOUT HYDRAULIC .....	234
REMOTE CONTROL .....	234
FROM SERIAL CC000332/WITH CAB / 3 BODDYS / WITHOUT HYDRAULIC .....	235
REMOTE CONTROL .....	235
FROM SERIAL CC000332/WITH PLATFORM / 3 BODDYS / WITHOUT HYDRAULIC .....	236
REMOTE CONTROL .....	236
FROM SERIAL CC000332/WITH PLATFORM / 3 BODDYS / WITHOUT HYDRAULIC .....	237
REMOTE CONTROL .....	238
C-MOUNT SEAL KIT .....	241
REMOTE CONTROL .....	242
INTAKE .....	244
OIL FILTER .....	246
FILTER .....	247
OIL FILTER .....	248
COUPLER .....	249
BLOCK .....	250
HYDRAULIC COMMAND VALVES .....	251
REMOTE CONTROL .....	255
COUPLER .....	263
<b>ELECTRICAL SYSTEM .....</b>	<b>265</b>
INSTRUMENT PANEL .....	266
ELECTRIC SYSTEM HYDRAULIC LIFT .....	267
ELECTRICAL SYSTEM HYDRAULIC LIFT .....	270
ELECTRIC SYSTEM .....	273
ELECTRIC SYSTEM HYDRAULIC LIFT .....	277
ELECTRICAL SYSTEM .....	281
ELECTRIC SYSTEM HYDRAULIC LIFT .....	284
ELECTRIC SYSTEM WITHOUT LIFT .....	287
PANEL .....	289
ELECTRIC SYSTEM WITHOUT LIFT .....	290
HARNES MINIHOOD .....	292

FRONT ELECTRIC SYSTEM.....	294
FRONT HARNESS.....	295
HEADLAMP.....	298
BATTERY.....	300
SWITCH.....	301
BATTERY.....	302
BATTERY & CABLES.....	303
HEADLIGHT AUXILIARY.....	304
LIGHTING SYSTEM.....	305
ELECTRICAL SYSTEM.....	309
ELECTRIC SYSTEM PERIPHERALS.....	310
PLATE LIGHT ASSY.....	311
ASW WITHOUT PLATE LIGHT.....	312
ASW WITH PLATE LIGHT.....	313
WORK LIGHT.....	314
ELECTRIC SYSTEM CAB.....	315
WIRE HARNESS.....	316
REMOTE CONTROL.....	318
WIRE HARNESS AG EXTERNAL.....	319
ELECTRIC SYSTEM WITHOUT HYDRAULIC LIFT.....	320
ELECTRIC SYSTEM.....	321
<b>CAB.....</b>	<b>323</b>
CAB.....	323
SUN-SHIELD ASSY.....	324
EXTERNAL REAR-VIEW MIRROR.....	325
MIRROR.....	326
REAR MUDGUARD CABINED.....	327
LADDER.....	328
AIR CONDITIONER.....	330
AIR CONDITIONING (OPTIONAL EQUIPMENT).....	331
CAB AIR CONDITIONER.....	332
KIT ACTIVE ELEMENT TO AIR FILTER OF CAB.....	334
ROOF CAB 4 HEADLIGHTS.....	335
CAB ROOF ASSEMBLY DYNA TM 4 HEADLIGHTS.....	336
CAB ROOF 4 HEADLIGHTS.....	337
ROOF.....	338

CAB ROOF 4 HEADLIGHTS .....	339
ROOR CAB 4 HEADLIGHTS .....	341
ROOF TELEMETRY WITH 4 HEADLIGHTS.....	342
ROOR CAB TELEMETRY .....	345
ROOF TELEMETRY .....	346
ENTRY VERSION ROOF .....	348
CAB ROOF 2 HEADLIGHTS .....	349
CAB ROOF 4 FRONTAL HEADLIGHTS AND 4 BACK HEADLIGHTS.....	353
CAB ROOF 4 HEADLIGHTS .....	354
CAB ROOF 4 FRONTAL HEADLIGHTS AND 4 BACK HEADLIGHTS.....	356
ROOR CAB.....	357
ROLLOVER PROTECTIVE .....	359
GUARD KIT.....	360
CAB ROOF 4 HEADLIGHTS .....	361
ROOR CAB 4 HEADLIGHTS .....	362
ROOF .....	363
ELECTRICAL EQUIPMENT .....	364
CAB ROOF .....	365
KIT SOUND.....	366
KIT, GRILLE AIR .....	367
ROOF .....	368
CONTROL PANEL.....	370
PANEL .....	373
AIR CONDITIONER.....	375
CAB AIR CONDITIONER.....	376
CLADDING .....	377
CABIN COMPONENTS.....	378
PANEL .....	379
AIR CONDITIONER.....	380
DRAIN AIR CONDITIONED .....	381
CAB CAB FASTENERS .....	382
CAB ASSY.....	383
SIDE WINDOW.....	388
REAR PANE .....	389
LINKAGE PTO .....	390
DOOR.....	391



FRONT CAB PANE .....	392
WINDSCREEN WIPER.....	393
CONTAINER.....	396
WINDSCREEN WIPER.....	397
CAB CLADDING.....	398
INTERNAL FINISH OF THE CABIN .....	410
CAB CLADDING.....	420
SIDE CONSOLE.....	438
ACCESSORIES MISCELLANEOUS.....	439
CONTAINER.....	440
ASSEMBLY RESERVOIR .....	441
FIRE EXTINGUISHER.....	442
MIRROR.....	443
COVER.....	444
CLADDING .....	445
<b>PLATFORM .....</b>	<b>446</b>
THROTTLE CONTROLS .....	447
ELASTIC MECHANISM.....	451
SEAT .....	452
SEAT SEAT BELT .....	453
SEAT .....	454
BREAKE AND CLUTCH COMMAND .....	463
DRAIN .....	465
RC LEVER ASSY.....	466
HEADER DRIVE LEVER.....	469
PARKING BRAKE .....	470
PEDAL .....	471
PARKING BRAKE .....	472
PEDAL .....	473
RC LEVER ASSY.....	474
PTO CONTROLS.....	475
PARKING BRAKE .....	476
PEDAL .....	477
RC LEVER ASSY.....	478
PTO CONTROLS.....	479
PARKING BRAKE .....	480

PEDAL .....	481
RC LEVER ASSY.....	482
PTO CONTROLS.....	483
OPERATOR PLATAFORM FASTENERS .....	484
OPERATOR PLATFORM.....	485
CLADDING .....	486
COATING WITHOUT PASSENGER SEAT .....	488
CANOPY .....	489
MIRROR.....	490
FIRE EXTINGUISHER.....	491
CONTAINER.....	492
PARKING BRAKE .....	495
PEDAL .....	496
RC LEVER ASSY.....	497
PTO CONTROLS.....	498
REARVIEW MIRROR .....	499
CLADDING CONSOLE.....	500
<b>AIR CONDITIONING AND HEATING SYSTEM .....</b>	<b>501</b>
CONDENSER ASSEMBLY MOTOR.....	502
<b>CHASSIS .....</b>	<b>503</b>
SHEET METAL.....	504
FRONT SHIELDS.....	505
SHEET METAL.....	507
CHAFF SPREADER KIT ADAPTOR.....	508
SHEET METAL.....	509
HOOD INSTALL.....	515
GUARD KIT.....	521
SAFETY LOCK ASSY .....	523
REAR MUDGUARD PLATAFORMED .....	524
REAR FENDER .....	525
MUDGUARD .....	526
<b>DECALS .....</b>	<b>527</b>
EMBLEMS.....	528
VELOCITY SCALE.....	529
DECALS.....	530
DECAL PORTUGUESE .....	542

DECAL ENGLISH.....	543
DECAL SPANISH.....	544
DECALS ENGLISH.....	545
DECALS TRACTOR MANUFACTURED IN BRAZIL.....	546
<b>WHEELS.....</b>	<b>547</b>
FRONT WHEELS 14.9 X 26 R1 6L.....	548
FRONT WHEELS 14.9-28 (8L).....	549
FRONT WHEELS 14.9 X 28 R2.....	550
FRONT WHEELS 12.4X24 R1.....	551
FRONT WHEELS 18.4 X 26 R1 10L.....	552
FRONT WHEELS 12.4X24 R1.....	553
FRONT WHEELS 14.9-28 (8L).....	554
FRONT WHEELS.....	555
FRONT WHEELS 600/60 X 30,5.....	557
FRONT WHEELS 12.4X24 R1.....	558
FRONT WHEELS 14.9 X 26 R1 6L.....	560
FRONT WHEEL.....	561
REAR WHEELS 18.4 X 38 R1.....	562
REAR WHEELS 18.4 X 38 R1.....	565
REAR WHEELS 20.8 X 38.....	566
REAR WHEELS 20.8 X 38 R1.....	567
REAR WHEELS 23.1 X 30 R1.....	569
REAR WHEELS 23.1 X 30 R2.....	570
REAR WHEELS 24.5 X 32 R1.....	571
REAR WHEEL.....	572
REAR WHEELS.....	573
REAR WHEEL.....	574
WHEELS DUAL.....	578
REAR WHEELS 18.4 X 38 R1.....	583
TYRE & CHAMBER 18.4 X 38 R1 10L.....	584
REAR WHEELS 16.9 X 24 R1 8L.....	585
TYRE & CHAMBER 23.1 X 30 R2 8L.....	586
REAR WHEELS 18.4 X 38 R1.....	587
TYRE & CHAMBER 20.8X38 R2.....	588
REAR WHEELS 20.8 X 38 R1 8L.....	589
REAR WHEELS 24.5 X 32 R1.....	590

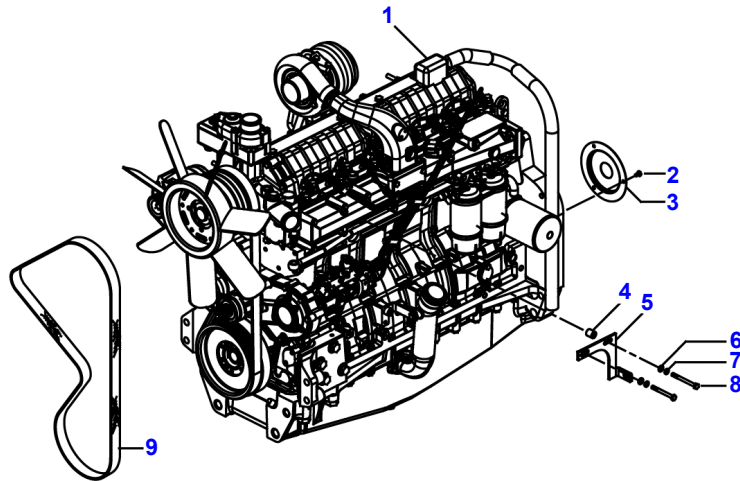
WHEEL 24.5 X 32 R1 10L .....	593
REAR WHEELS .....	594
WHEELS DUAL .....	596
REAR WHEELS .....	597
BRACKET AND FRONT WHEIGHT .....	599
REAR WHEEL WEIGHTS 1 + 1 X 72 KG .....	602
REAR WHEEL WEIGHTS 2 + 2 X 72 KG .....	603
REAR WHEEL WEIGHTS 2,84KG + 2,52KG .....	604
REAR WHEEL WEIGHTS 2,84KG + 4,52KG .....	605
REAR WHEEL WEIGHTS .....	606
REAR WHEEL WEIGHTS 4 + 4 X 72 KG .....	612
<b>IMPLEMENT DRIVE SYSTEM .....</b>	<b>613</b>
PTO-COUPLING DRIVE MECHANISM .....	614
INDEPENDENT POWER TAKE OFF COVER .....	615
COVER AND CONTROLS .....	616
INDEPENDENT POWER TAKE-OFF CLUTCH .....	617
TRAVELING HYDRAULIC EQUIPMENT .....	618
TDP KIT .....	620
SHAFT IPTO 540RPM .....	621
POWER TAKE-OFF SHAFT 1000 RPM .....	622
PTO SHAFT .....	623
PROTECTION .....	624
TDP PROTECTION .....	625
<b>LINKAGE .....</b>	<b>626</b>
MASTER BEAM AND DRAWBAR .....	627
MASTER BEAN .....	628
LIFT ARMS .....	629
ARM REST .....	630
LINKS .....	631
LIFT ARMS .....	632
ARM REST .....	637
LINKS .....	638
WITHOUT TELESCOPIC STABILISER .....	639
HYDR. CYLINDER .....	640
<b>ACCESSORIES .....</b>	<b>641</b>
TOOLS BOX .....	642

TOOLS .....	644
SPANNER .....	645
GREASER .....	648
HEARING PROTECTOR .....	649
WARNING TRIANGLE .....	650
GPS RECEPTOR AND LIGHT BAR .....	652
GPS RECEPTOR .....	653
LIGHT BAR .....	654
TELEMETRY .....	655
AUTOGUIDE READY .....	658
SENSOR WHEEL .....	660
SPOOL .....	661
AUTOGUIDE SYSTEM .....	662
TILT SENSOR .....	664
AG3000 AUTOGUIDE DECIMETER .....	665
GPS RECEPTOR .....	666
SUPPORT CANOPY .....	667
MONITOR C3000 ASSY .....	668
MONITOR C3000 ASSY ADVANCED .....	669
AUTOGUIDE 3000 .....	670
ANTENNA .....	671
GPS RECEPTOR .....	672
HIPER BASE STATION HIPER AG .....	673
RECEIVER .....	674
MASTER BRAKE CYLINDER REPLACEMENT KIT .....	675

<b>Page Number</b>	<b>Page Title</b>	<b>Page Reference</b>
01-000-TOC	ENGINE, FUEL AND EXHAUST SYSTEM	01-000-TOC
02-000-TOC	AXLES	02-000-TOC
03-000-TOC	STEERING SYSTEM	03-000-TOC
04-000-TOC	DRIVE TRAIN SYSTEM	04-000-TOC
05-000-TOC	HYDRAULIC SYSTEM	05-000-TOC
06-000-TOC	ELECTRICAL SYSTEM	06-000-TOC
07-000-TOC	CAB	07-000-TOC
08-000-TOC	PLATFORM	08-000-TOC
09-000-TOC	AIR CONDITIONING AND HEATING SYSTEM	09-000-TOC
10-000-TOC	CHASSIS	10-000-TOC
11-000-TOC	DECALS	11-000-TOC
12-000-TOC	WHEELS	12-000-TOC
13-000-TOC	IMPLEMENT DRIVE SYSTEM	13-000-TOC
14-000-TOC	LINKAGE	14-000-TOC
15-000-TOC	ACCESSORIES	15-000-TOC

Page Number	Page Title	Page Reference
01-0001	ENGINE - ENGINE TIER 0	AA01Z073-1
01-0002	ENGINE - ENGINE TIER 2	AA01Z075-1
01-0003	STARTING HEATER	EI56Z029-1
01-0004	AIR CLEANER - ENGINE TIER 0	E060Z047-1
01-0005	AIR CLEANER - ENGINE TIER 2	E060Z046-1
01-0006	AIR CLEANER	E060Z048-1
01-0007	EXHAUST	EA74Z038-1
01-0008	EXHAUST - WITH FIRE WALL	EA74Z052-1
01-0009	EXHAUST - WITH FIRE WALL	EA74Z053-1
01-0010	COOLING SYSTEM - ENGINE TIER 0	E065Z022-1
01-0011	COOLING SYSTEM - ENGINE TIER 2	E065Z019-1
01-0012	COOLER - ENGINE TIER 2	N806Z003-1
01-0013	FUEL TANK - RIGHT SIDE	E063Z044-1
01-0014	FUEL TANK - LEFT SIDE	E063Z045-1
01-0015	FUEL TANK	E063Z046-1
01-0016	FUEL TANK - FORESTRY TRACTOR	EB03Z016-1
01-0017	FUEL TANK RIGHT HAND - (00000000000000000001 - AAAT0015AGC001111)	EA97Z013-1
01-0018	FUEL TANK RIGHT HAND - (AAAT0015AGC001112 - 999999999999999999)	2444518
01-0019	FUEL TANK LEFT HAND - (00000000000000000001 - AAAT0015AGC001111)	EA96Z024-1
01-0020	FUEL TANK LEFT HAND - (AAAT0015AGC001112 - 999999999999999999)	2444603
01-0021	FUEL TANK - 4 WHEELS DRIVE	EA95Z014-1
01-0022	FUEL TANK	E063Z066-1
01-0023	FUEL TANK - LEFT SIDE	2444751
01-0024	FUEL TANK - FORESTRY TRACTOR	EB03Z014-1
01-0025	FUEL TANK - FORESTRY TRACTOR	EB03Z027-1
01-0026	TANK BREATHER	E151Z001-1
01-0027	FUEL TANK	E063Z077-1
01-0028	FUEL TANK - RIGHT SIDE	2444747
01-0029	CYLINDER BLOCK - ENGINE TIER 0	N678Z004-1
01-0030	GEAR HOUSING - ENGINE TIER 0	N679Z004-1
01-0031	FLYWHEEL AND HOUSING - ENGINE TIER 0	N680Z004-1
01-0032	STARTER	Q510Z011-1
01-0033	CRANKSHAFT - ENGINE TIER 0	0080Z005-1
01-0034	VALVE MECHANISM - ENGINE TIER 0	N681Z004-1
01-0035	CYLINDER HEAD - ENGINE TIER 0	N682Z004-1
01-0036	INDUCTION MANIFOLD - ENGINE TIER 0	EO67Z024-1
01-0037	TURBOCHARGER FEEDER - ENGINE TIER 0	ER85Z008-1
01-0038	CRANKCASE - ENGINE TIER 0	LA46Z004-1
01-0039	OIL FILTER - ENGINE TIER 0	EO26Z027-1
01-0040	WATER PUMP - ENGINE TIER 0	O275Z024-1
01-0041	INJECTION PUMP - ENGINE TIER 0	O405Z005-1
01-0042	FUEL FILTER - ENGINE TIER 0	HB18Z014-1
01-0043	SEDIMENTATION FILTER - ENGINE TIER 0	N788Z004-1
01-0044	ALTERNATOR - ENGINE TIER 0	O160Z033-1
01-0045	STARTER MOTOR - ENGINE TIER 0	E055Z016-1
01-0046	ENGINE REPAIR PARTS - ENGINE TIER 0	N692Z004-1
01-0047	CYLINDER BLOCK - ENGINE TIER 2	N678Z008-1
01-0048	GEAR HOUSING - ENGINE TIER 2	N679Z008-1
01-0049	FLYWHEEL AND HOUSING - ENGINE TIER 2	N680Z008-1
01-0050	CRANKSHAFT MECHANISM - ENGINE TIER 2	V113Z066-1
01-0051	VALVES MECHANISM - ENGINE TIER 2	V662Z016-1
01-0052	CYLINDER HEAD - ENGINE TIER 2	N682Z008-1
01-0053	INDUCTION MANIFOLD AND EXHAUST - ENGINE TIER 2	N104Z014-1
01-0054	TURBOCHARGER FEEDER - ENGINE TIER 2	O425Z003-1
01-0055	SUMP - ENGINE TIER 2	V631Z058-1
01-0056	OIL FILTER - ENGINE TIER 2	EO26Z034-1
01-0057	COOLANT PUMP - ENGINE TIER 2	N687Z009-1
01-0058	INJECTION PUMP - ENGINE TIER 2	O405Z009-1
01-0059	SEDIMENTATION FILTER - ENGINE TIER 2	N788Z008-1
01-0060	FUEL FILTER - ENGINE TIER 2	O392Z003-1
01-0061	ALTERNATOR - ENGINE TIER 2	O160Z037-1
01-0062	STARTER MOTOR - ENGINE TIER 2	E055Z023-1
01-0063	ENGINE OVERHAUL KITS - ENGINE TIER 2	O573Z003-1

MF 7150 TRACTOR  
T0218309



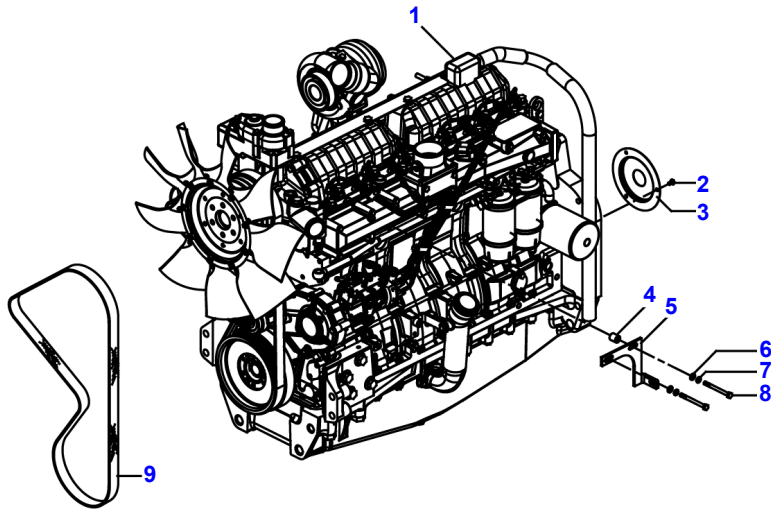
Massey Ferguson  
MF 7150 TRACTOR  
ENGINE  
ENGINE TIER 0

C715001  
Page01-0001

Item	Part Number	Qty	Description Comments	Technical Specification
1	6217974M91	1	KIT, MOTOR 150 CV SEE PAGE 01-0029	620 DS 150 HP
2	391074X1	3	HEXAGONAL HEAD BOLT	M6 X 12 (1.0) ISO 8.8 ZN
3	6209171M1	1	PROTECTION	
4	6213202M1	1	BUSH 8 x 19 x 21	8 X 19 X 21
5	6209496M1	1	CABLE BRACKET	
6	339024X1	2	FLAT WASHER	Ø 8,4-17 X 2 MM ZN
7	339374X1	2	LOCKWASHER	M8 ZN
8	339136X1	1	HEXAGONAL HEAD BOLT	M8 X 90 (1.25) ISO 8.8 ZN
9	V685081930	1	MULTI-RIBBED BELT	



MF 7150 TRACTOR  
T0218456

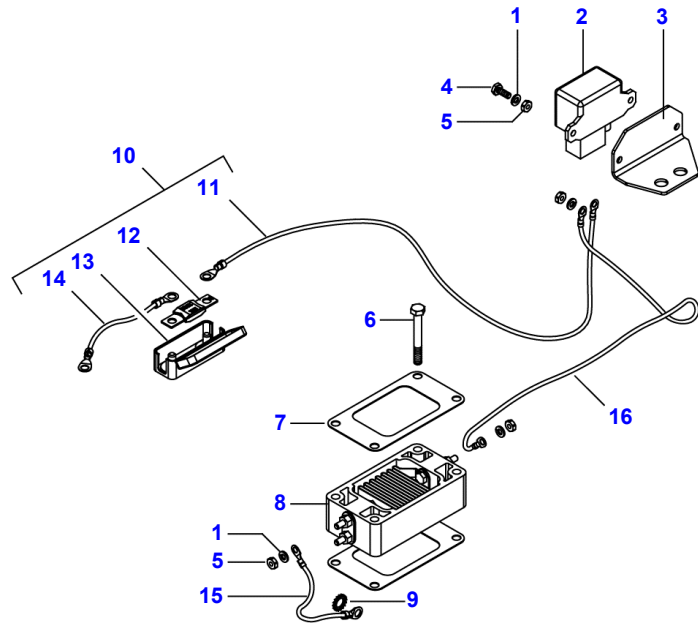


Massey Ferguson  
MF 7150 TRACTOR  
ENGINE  
ENGINE TIER 2

C715001  
Page01-0002

Item	Part Number	Qty	Description Comments	Technical Specification
1	6239890M91	1	KIT, MOTOR 150 CV SEE PAGE 01-0047	620DSAE TIER2 150 HP
2	391074X1	3	HEXAGONAL HEAD BOLT	M6 X 12 (1.0) ISO 8.8 ZN
3	6209171M1	1	PROTECTION	
4	6213202M1	1	BUSH 8 x 9 x 21	8 X 19 X 21
5	6262363M1	1	BRACKET	
6	339024X1	2	FLAT WASHER	Ø 8,4-17 X 2 MM ZN
7	339374X1	2	LOCKWASHER	M8 ZN
8	339123X1	2	HEXAGONAL HEAD BOLT M8 x 90 CL8.8	M8 X 20 (1.25) ISO 8.8 ZN
9	V685081930	1	MULTI-RIBBED BELT	

MF 7150 TRACTOR  
T0289463



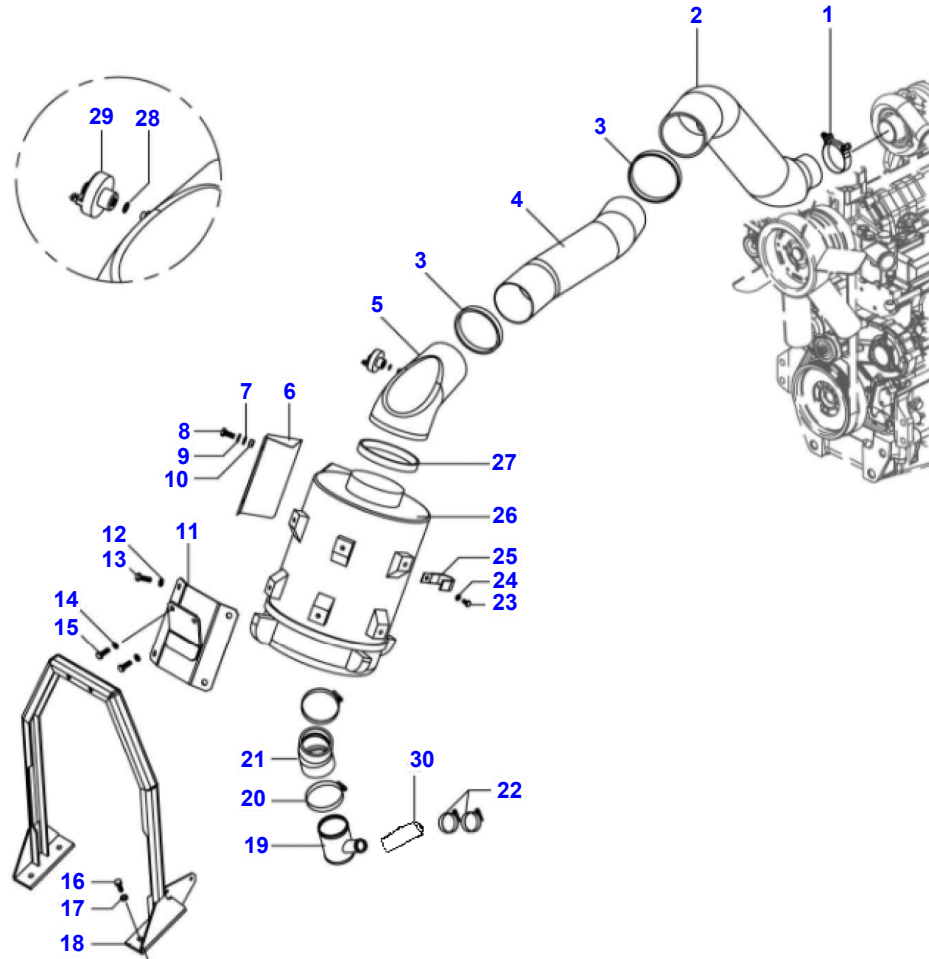
Massey Ferguson  
MF 7150 TRACTOR

C715001

Page01-0003

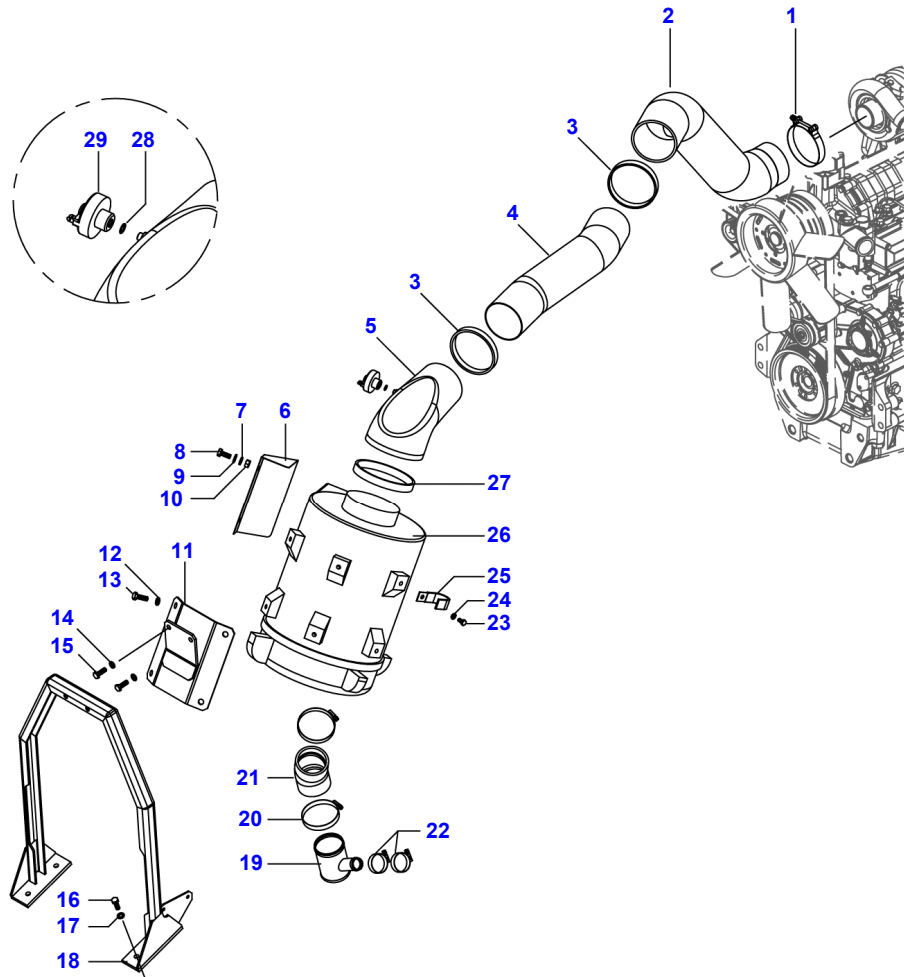
STARTING HEATER

Item	Part Number	Qty	Description Comments	Technical Specification
1	391130X1	6	LOCKWASHER	M6 ZN
2	V837069047	1	RELAY 150A	
3	6273989M1	1	BRACKET	
4	339560X1	2	HEXAGONAL HEAD BOLT	M6 X 16 (1.0) ISO 8.8 ZN
5	339030X1	6	HEX NUT	M6 (1.0) ISO 8 ZN
6	339159X1	4	HEXAGONAL HEAD BOLT	M8 X 65 (1.25) ISO 8.8 ZN
7	6219797M1	2	GASKET	
8	V836864398	1	INTAKE AIR PREHEATER	
9	VJD9018	1	LOCK WASHER	A 10.5 DIN 6798
10	6236944M91	1	KIT, HARNESS	
11	6236946M1	1	CABLE (10)	
12	6237374M1	1	FUSE 200A (10)	MEGA 200A
13	6237373M1	1	BRACKET (10)	030038
14	6236945M1	1	CABLE (10)	
15	6236948M1	1	CABLE (10)	
16	6236947M1	1	CABLE (10)	



Item	Part Number	Qty	Description Comments	Technical Specification
1	020070T1	1	CLAMP	
2	6209163M1	1	HOSE	
3	020080T1	2	CLAMP	
4	6270230M1	1	LINK	
5	6270228M91	1	HOSE	
6	6235724M1	1	GUARD	
7	339374X1	X	LOCKWASHER	M8 ZN
8	339123X1	2	HEXAGONAL HEAD BOLT	M8 X 20 (1.25) ISO 8.8 ZN
9	390972X1	2	FLAT WASHER	M8 ZN
10	339169X1	2	HEX NUT	M8 (1.25) ISO 8 ZN
11	6232973M91	1	BRACKET	
12	339374X1	X	LOCKWASHER	M8 ZN
13	339761X1	4	HEXAGONAL HEAD BOLT	M8 X 25 (1.25) ISO 8.8 ZN
14	339376X1	X	LOCKWASHER	M10 ZN
15	339451X1	X	HEXAGONAL HEAD BOLT	M10 X 30 (1.5) ISO 8.8 ZN
16	339451X1	X	HEXAGONAL HEAD BOLT	M10 X 30 (1.5) ISO 8.8 ZN
17	339376X1	X	LOCKWASHER	M10 ZN
18	6232975M91	1	BRACKET	
19	6239608M91	1	T-FITTING	
20	2800261M1	2	CLAMP	
21	6239607M1	1	HOSE	
22	490802M1	2	CLAMP	D1 3/4POL
23	339124X1	1	HEXAGONAL HEAD BOLT	M8 X 16 (1.25) ISO 8.8 ZN
24	339374X1	X	LOCKWASHER	M8 ZN
25	6221974M91	1	CLAMP	
26	6211380M91	1	AIR FILTER	
			SEE PAGE 01-0006	
27	6217729M1	1	CLAMP	140-159
28	1440993X1	1	SEALING RING	Ø 10-13,5 X 1 MM CU PL
29	3808461M1	1	PRESSURE SENSOR	
30	6221949M1	1	HOSE	

MF 7150 TRACTOR  
T04350020A

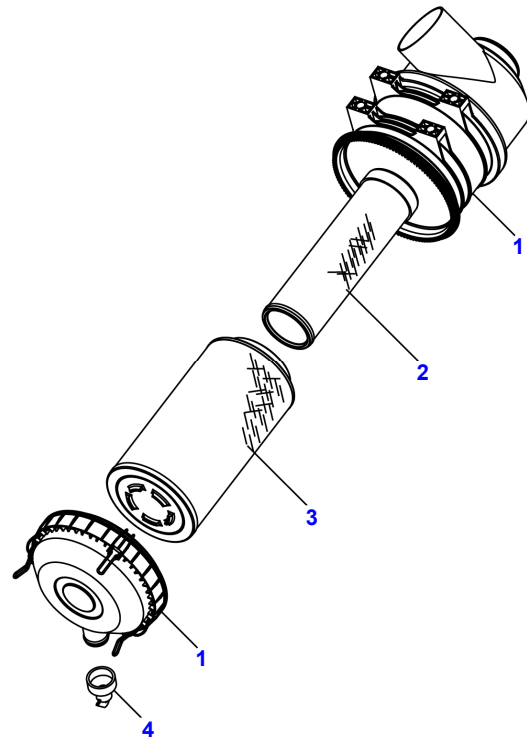


Massey Ferguson  
MF 7150 TRACTOR  
AIR CLEANER  
ENGINE TIER 2

C715001  
Page01-0005

Item	Part Number	Qty	Description Comments	Technical Specification
1	023475T1	1	CLAMP	
2	6272369M1	1	HOSE	
3	020080T1	2	CLAMP	
4	6270230M1	1	LINK	
5	6270228M91	1	HOSE	
6	6235724M1	1	GUARD	
7	339374X1	X	LOCKWASHER	M8 ZN
8	3000428X1	4	BOLT	M8 X 1.25 X 20
9	390972X1	X	FLAT WASHER	M8 ZN
10	339169X1	X	HEX NUT	M8 (1.25) ISO 8 ZN
11	6232973M91	1	BRACKET	
12	339374X1	X	LOCKWASHER	M8 ZN
13	339761X1	4	HEXAGONAL HEAD BOLT	M8 X 25 (1.25) ISO 8.8 ZN
14	339376X1	X	LOCKWASHER	M10 ZN
15	339451X1	X	HEXAGONAL HEAD BOLT	M10 X 30 (1.5) ISO 8.8 ZN
16	339451X1	X	HEXAGONAL HEAD BOLT	M10 X 30 (1.5) ISO 8.8 ZN
17	339376X1	X	LOCKWASHER	M10 ZN
18	6232975M91	1	BRACKET	
19	6239608M91	1	T-FITTING	
20	2800261M1	2	CLAMP	
21	6239607M1	1	HOSE	
22	490802M1	2	CLAMP	D1 3/4POL
23	339124X1	1	HEXAGONAL HEAD BOLT	M8 X 16 (1.25) ISO 8.8 ZN
24	339374X1	14	LOCKWASHER	M8 ZN
25	6221974M91	1	CLAMP	
26	6211380M91	1	AIR FILTER	
			SEE PAGE 01-0006	
27	6217729M1	1	CLAMP	140-159
28	1440993X1	1	SEALING RING	Ø 10-13,5 X 1 MM CU PL
29	3808461M1	1	PRESSURE SENSOR	

MF 7150 TRACTOR  
6211380M91



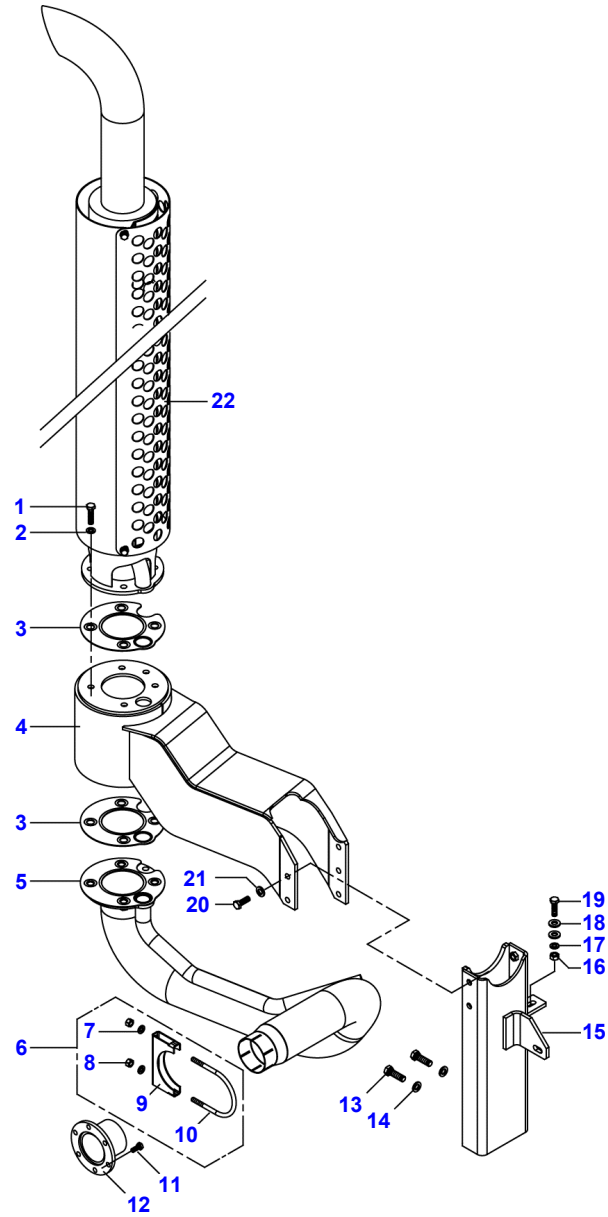
Massey Ferguson  
MF 7150 TRACTOR  
AIR CLEANER

C715001

Page01-0006

Item	Part Number	Qty	Description Comments	Technical Specification
1	6211380M91	1	AIR FILTER [B]	
	6283985M1		COVER	
2	6211382M1	1	AIR FILTER	
3	6211381M1	1	FILTER [A]	SAFETY
4	026053R1	1	VALVE [A] INNER [B] OUTER	

MF 7150 TRACTOR  
T04390017



Massey Ferguson  
MF 7150 TRACTOR

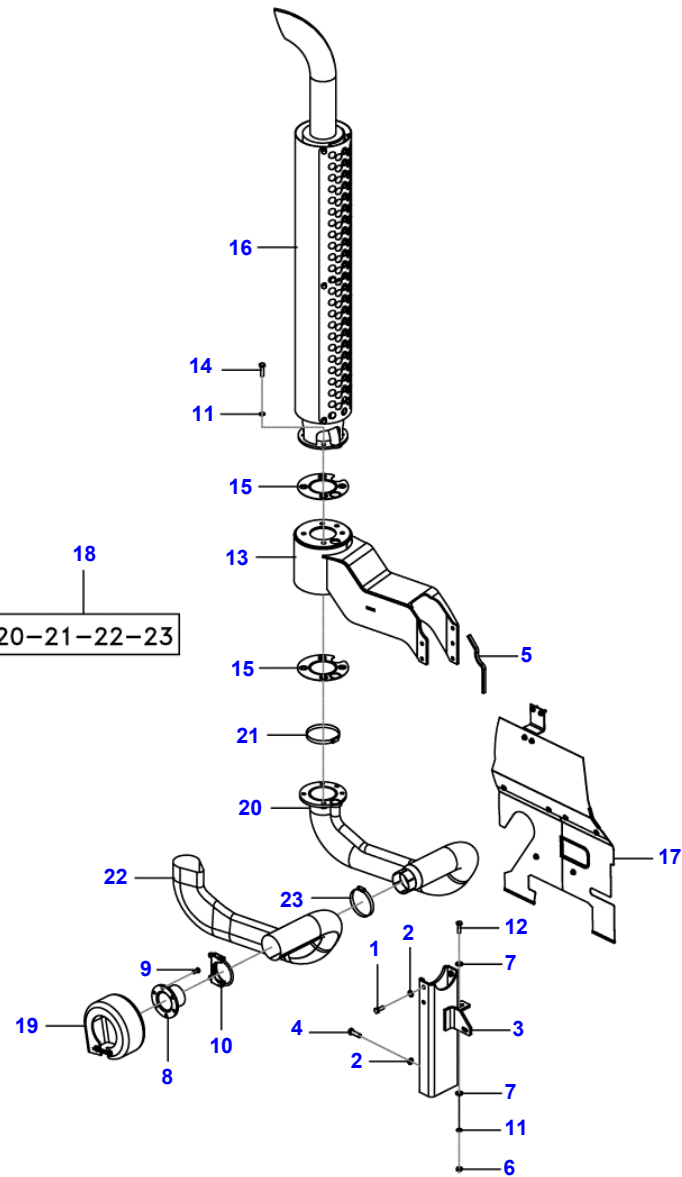
C715001

Page01-0007

EXHAUST

Item	Part Number	Qty	Description Comments	Technical Specification
1	390799X1	5	HEXAGONAL HEAD BOLT	M10 X 40 (1.5) ISO 8.8 ZN
2	339814X1	X	HEXAGONAL HEAD BOLT	M10 X 35 (1.5) ISO 8.8 ZN
3	6209355M1	2	GASKET	
4	6233091M91	1	BRACKET	
5	6272845M91	1	EXHAUST PIPE	
6	70930974	1	CLAMP	
11	3010182X1	6	HEXAGONAL HEAD BOLT	M8 X 20 ISO 10.9 PH
12	6211187M91	1	FLANGE	
13	390912X1	2	HEXAGONAL HEAD BOLT	M12 X 40 (1.75) ISO 8.8 ZN
14	339369X1	4	LOCKWASHER	M12 ZN
15	6272856M91	1	BRACKET	
16	339402X1	1	HEX NUT	M10 (1.5) ISO 8 ZN
17	339814X1	X	HEXAGONAL HEAD BOLT	M10 X 35 (1.5) ISO 8.8 ZN
18	353757X1	2	FLAT WASHER	7/16 ZN
19	339814X1	X	HEXAGONAL HEAD BOLT	M10 X 35 (1.5) ISO 8.8 ZN
20	3009493X1	5	HEXAGONAL HEAD BOLT	M10 X 30 (1.5) ISO 8.8 ZN
21	339376X1	9	LOCKWASHER	M10 ZN
22	6223415M91	1	EXHAUST PIPE	

MF 7150 TRACTOR  
T04390025



Massey Ferguson  
MF 7150 TRACTOR  
EXHAUST  
WITH FIRE WALL

C715001  
Page01-0008

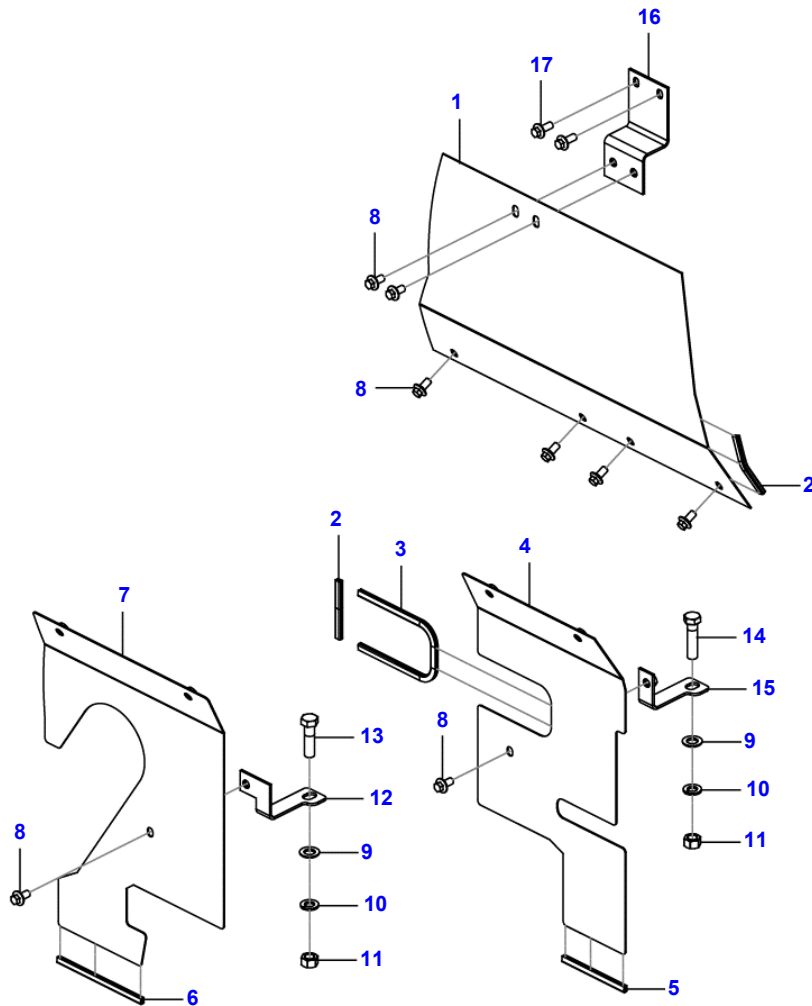
Item	Part Number	Qty	Description Comments	Technical Specification
1	3009493X1	5	HEXAGONAL HEAD BOLT	M10 X 30 (1.5) ISO 8.8 ZN
2	339369X1	4	LOCKWASHER	M12 ZN
3	6272856M91	1	BRACKET	
4	390912X1	2	HEXAGONAL HEAD BOLT	M12 X 40 (1.75) ISO 8.8 ZN
5	6264117M1	1	FOAM	
6	339402X1	1	HEX NUT	M10 (1,5) ISO 8 ZN
7	353757X1	2	FLAT WASHER 23x12x3	7/16 ZN
8	6211187M91	1	FLANGE	
9	3010182X1	6	HEXAGONAL HEAD BOLT	M8 X 20 ISO 10.9 PH
10	70930974	1	CLAMP	
11	339376X1	9	LOCKWASHER	M10 ZN
12	339814X1	1	HEXAGONAL HEAD BOLT	M10 X 35 (1.5) ISO 8.8 ZN
13	6233091M91	1	BRACKET	
14	390799X1	5	HEXAGONAL HEAD BOLT	M10 X 40 (1.5) ISO 8.8 ZN
15	6209355M1	2	GASKET	
16	6223415M91	1	EXHAUST PIPE	
17	6318097M92	1	HEATSHIELD SEE PAGE 01-0009	
18	ACW0441160	1	EXHAUST PIPE	
19	6318391M91	1	PROTECTOR BOOT	
20	6272845M91	1	EXHAUST PIPE	
21	338622X1	1	HOSE CLIP	Ø 100-125 X 12 MM ZN
22	ACW0441210	1	BAND	
23	338621X1	1	HOSE CLIP	Ø 90-110 X 12 MM ZN

MF 7150 TRACTOR  
6318097M92

Massey Ferguson  
MF 7150 TRACTOR  
EXHAUST  
WITH FIRE WALL

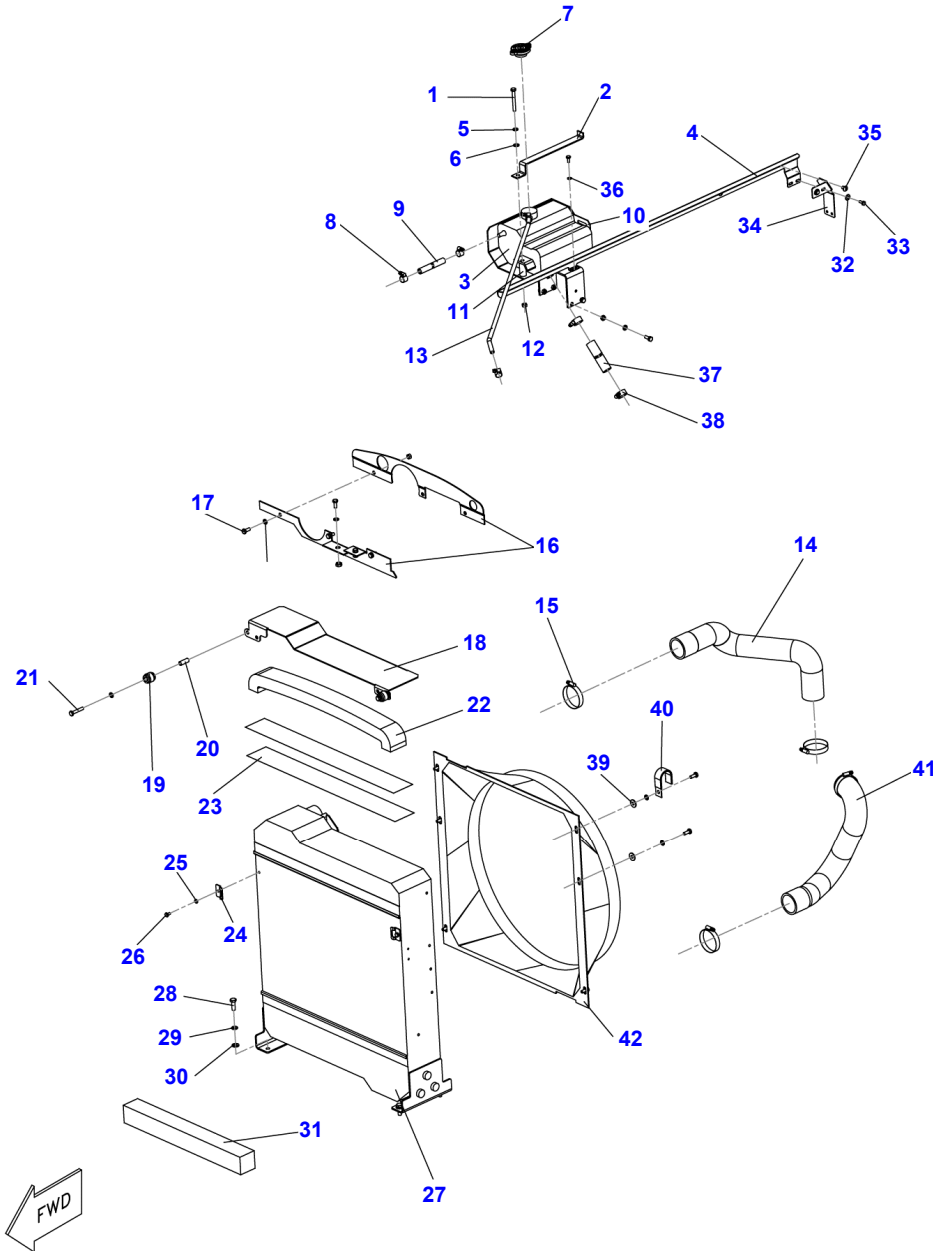
C715001  
Page01-0009

Item	Part Number	Qty	Description Comments	Technical Specification
1	ACW0702480	1	SHEET	
2	ACW0714400	2	FOAM	80 MM
3	ACW0444830	1	CABLE JUNCTION	
4	ACW0702500	1	BRACKET LEFT HAND	
5	ACW0714420	1	FOAM	105 MM
6	ACW0714410	1	FOAM	142 MM
7	ACW0702520	1	BRACKET RIGHT HAND	
8	3009192X1	8	HEXAGON FLANGE BOLT M8x16	M8 X 16 (1.25) ISO 10.9 ZN
9	390735X1	2	FLAT WASHER 13.6x23.8x2.5	M12 ZN
10	339369X1	2	LOCKWASHER	M12 ZN
11	339054X1	2	HEX NUT	M12 (1.75) ISO 8 ZN
12	ACW0413240	1	BRACKET RIGHT HAND	
13	3009509X1	1	HEXAGONAL HEAD BOLT	M12 X 45 ISO 8.8 ZN
14	390887X1	1	HEXAGONAL HEAD BOLT	M12 X 50 (1.75) ISO 8.8 ZN
15	6317844M91	1	BRACKET	
16	6317845M91	1	BRACKET	
17	3009193X1	2	HEXAGON FLANGE BOLT	M8 X 20 (1.25) ISO 10.9 ZN





MF 7150 TRACTOR  
T04330013



Massey Ferguson  
MF 7150 TRACTOR  
COOLING SYSTEM  
ENGINE TIER 0

C715001  
Page01-0010

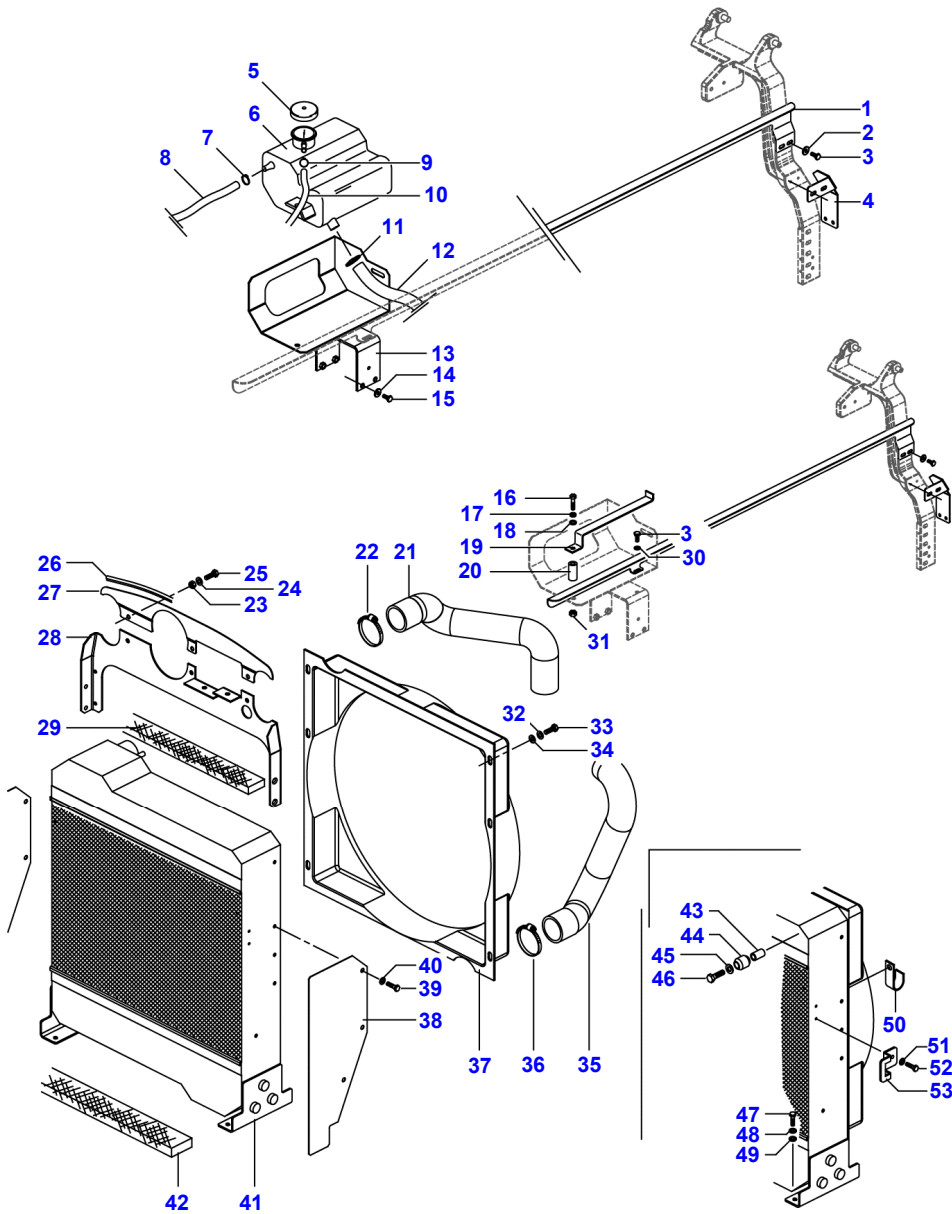
Item	Part Number	Qty	Description Comments	Technical Specification
1	390830X1	1	HEXAGONAL HEAD BOLT	M8 X 70 ISO 8.8 ZN
2	6203770M1	1	ATTACHMENT	
3	3810567M3	1	WATER TANK	
4	6273925M1	1	BRACKET	L7000
5	339374X1	18	LOCKWASHER	M8 ZN
6	390972X1	1	FLAT WASHER	M8 ZN
			16,8 X 8,6 X 1,6	
7	6236371M1	1	RADIATOR CAP	10PSI
8	391087X1	4	HOSE CLIP	
9	6262330M1	1	HOSE	J20R4D2 DM INT 9,5
10	6271681M91	1	BRACKET	
11	3810570M1	1	SPACER	
12	339169X1	4	HEX NUT	M8 (1.25) ISO 8 ZN
13	056027P1	1	HOSE	
14	6272690M1	1	HOSE	
15	3010155X1	4	HOSE CLIP	Ø 60-80 X 14 MM ZN
			FROM SERIAL OR ENGINE NUMBER	
			JC001219	
	2801096M1	4	CLAMP	
			UP TO SERIAL OR ENGINE NUMBER	
			JC001218	
16	6272748M1	1	CLOSING	
17	339123X1	15	HEXAGONAL HEAD BOLT	M8 X 20 (1.25) ISO 8.8 ZN
			M8X20	
18	6272760M91	1	CLOSING	
19	6275065M1	2	ROLLER	
20	6275066M1	2	BUSH	
21	339745X1	2	HEXAGONAL HEAD BOLT	M8 X 45 ISO 8.8 ZN
22	060491P1	1	SEAL	
23	6275425M1	2	ADHESIVE TAPE	
24	6272683M1	2	HITCH	
25	339375X1	4	LOCKWASHER	M6 ZN
26	391074X1	4	HEXAGONAL HEAD BOLT	M6 X 12 (1.0) ISO 8.8 ZN
27	3780221M5	1	WATER COOLER	
28	339451X1	4	HEXAGONAL HEAD BOLT	M10 X 30 (1.5) ISO 8.8 ZN
			M10X30	
29	339376X1	4	LOCKWASHER	M10 ZN
30	390734X1	4	FLAT WASHER	Ø 10-21 X 2 MM
			10,9 X 21 X 2,2	
31	037816P1	1	SEAL	
32	391038X1	2	FLAT WASHER	M6 ZN
33	339560X1	3	HEXAGONAL HEAD BOLT	M6 X 16 (1.0) ISO 8.8 ZN
34	6273926M1	1	BRACKET	L7000
35	6275169M1	2	BOLT	
36	353754X1	1	FLAT WASHER	1/4 ZN
			6,4 X 12 X 1,6	
37	6262331M1	1	HOSE	J20R4D2 DM INT 20,5
38	376830X1	2	HOSE CLIP	1.37-1-STD-ZN
39	391039X1	6	FLAT WASHER	M8 ZN
			24 X 9 X 1,9	
40	6221974M91	1	CLAMP	
41	6273003M1	1	HOSE	
42	6273005M1	1	DEFLECTOR	

MF 7150 TRACTOR  
T04330015

Massey Ferguson  
MF 7150 TRACTOR  
COOLING SYSTEM  
ENGINE TIER 2

C715001  
Page01-0011

Item	Part Number	Qty	Description Comments	Technical Specification
1	6273925M1	1	BRACKET	L7000
2	391038X1	2	FLAT WASHER	M6 ZN
3	339560X1	3	HEXAGONAL HEAD BOLT M6	M6 X 16 (1.0) ISO 8.8 ZN
4	6273926M1	1	BRACKET	L7000
5	6236371M1	1	RADIATOR CAP	10PSI
6	3810567M3	1	WATER TANK	
7	391087X1	2	HOSE CLIP	
8	6262330M1	1	HOSE	J20R4D2 DM INT 9,5
9	391087X1	2	HOSE CLIP	
10	056027P1	1	HOSE	
11	376830X1	2	HOSE CLIP	1.37-1-STD-ZN
12	6262331M1	1	HOSE	J20R4D2 DM INT 20,5
13	6271681M91	1	BRACKET	
14	339374X1	4	LOCKWASHER	M8 ZN
15	3000238X1	6	SCREW M8x16	
16	390830X1	1	HEXAGONAL HEAD BOLT	M8 X 70 ISO 8.8 ZN
17	390972X1	1	FLAT WASHER	M8 ZN
18	339374X1	1	LOCKWASHER	M8 ZN
19	6203770M1	1	ATTACHMENT	
20	3810570M1	1	SPACER	
21	6273335M1	1	HOSE	
22	3010155X1	2	HOSE CLIP	Ø 60-80 X 14 MM ZN
23	339169X1	3	HEX NUT	M8 (1.25) ISO 8 ZN
24	339375X1	4	LOCKWASHER	M6 ZN
25	391074X1	4	HEXAGONAL HEAD BOLT	M6 X 12 (1.0) ISO 8.8 ZN
26	6275428M1	1	SEAL	
27	6272728M1	1	CLOSING	
28	6232972M1	1	CLOSING	
29	060491P1	1	SEAL	
30	353754X1	1	FLAT WASHER	1/4 ZN
31	339169X1	1	HEX NUT	M8 (1.25) ISO 8 ZN
32	390734X1	6	FLAT WASHER	Ø 10-21 X 2 MM
33	339123X1	6	HEXAGONAL HEAD BOLT	M8 X 20 (1.25) ISO 8.8 ZN
34	339374X1	6	LOCKWASHER	M8 ZN
35	6273336M1	1	HOSE	
36	2801096M1	2	CLAMP	
37	6273013M1	1	DEFLECTOR	
38	6270208M1	2	CLOSING	
39	339123X1	6	HEXAGONAL HEAD BOLT M8x20	M8 X 20 (1.25) ISO 8.8 ZN
40	339374X1	6	LOCKWASHER	M8 ZN
41	3780221M5	1	WATER COOLER	
42	037816P1	1	SEAL	
43	6275066M1	2	BUSH	
44	6275065M1	2	ROLLER	
45	339374X1	2	LOCKWASHER	M8 ZN
46	339745X1	2	HEXAGONAL HEAD BOLT	M8 X 45 ISO 8.8 ZN
47	339451X1	4	HEXAGONAL HEAD BOLT	M10 X 30 (1.5) ISO 8.8 ZN
48	339376X1	4	LOCKWASHER	M10 ZN
49	390734X1	4	FLAT WASHER	Ø 10-21 X 2 MM
50	6221974M1	2	CLAMP	
51	339375X1	4	LOCKWASHER	M6 ZN
52	391074X1	4	HEXAGONAL HEAD BOLT	M6 X 12 (1.0) ISO 8.8 ZN
53	6272683M1		HITCH	

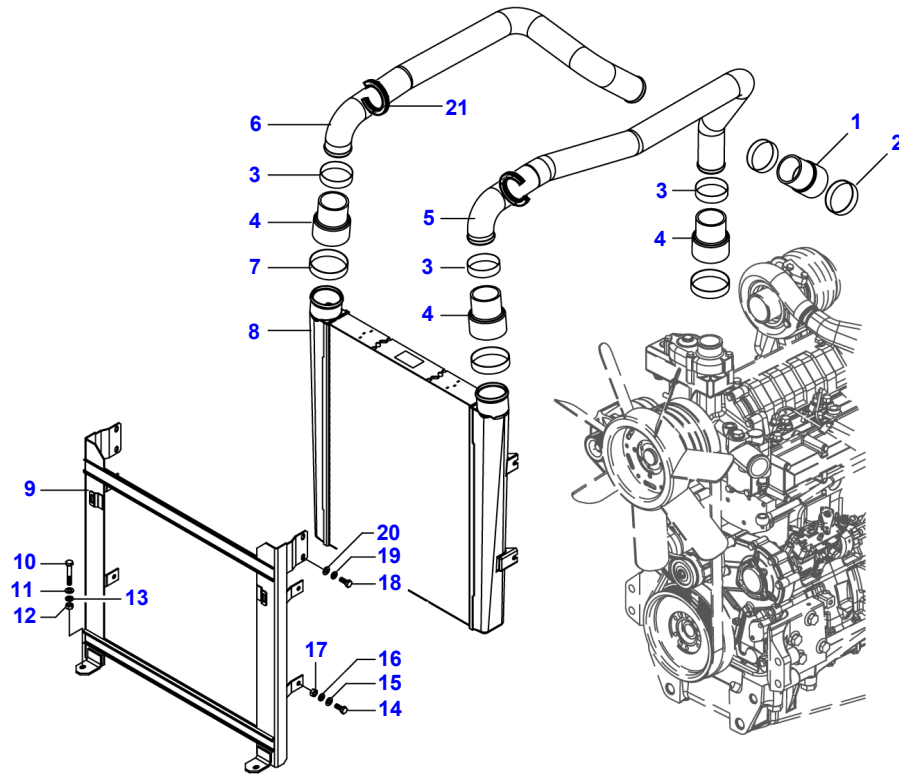


MF 7150 TRACTOR  
T04350020B

Massey Ferguson  
MF 7150 TRACTOR  
COOLER  
ENGINE TIER 2

C715001  
Page01-0012

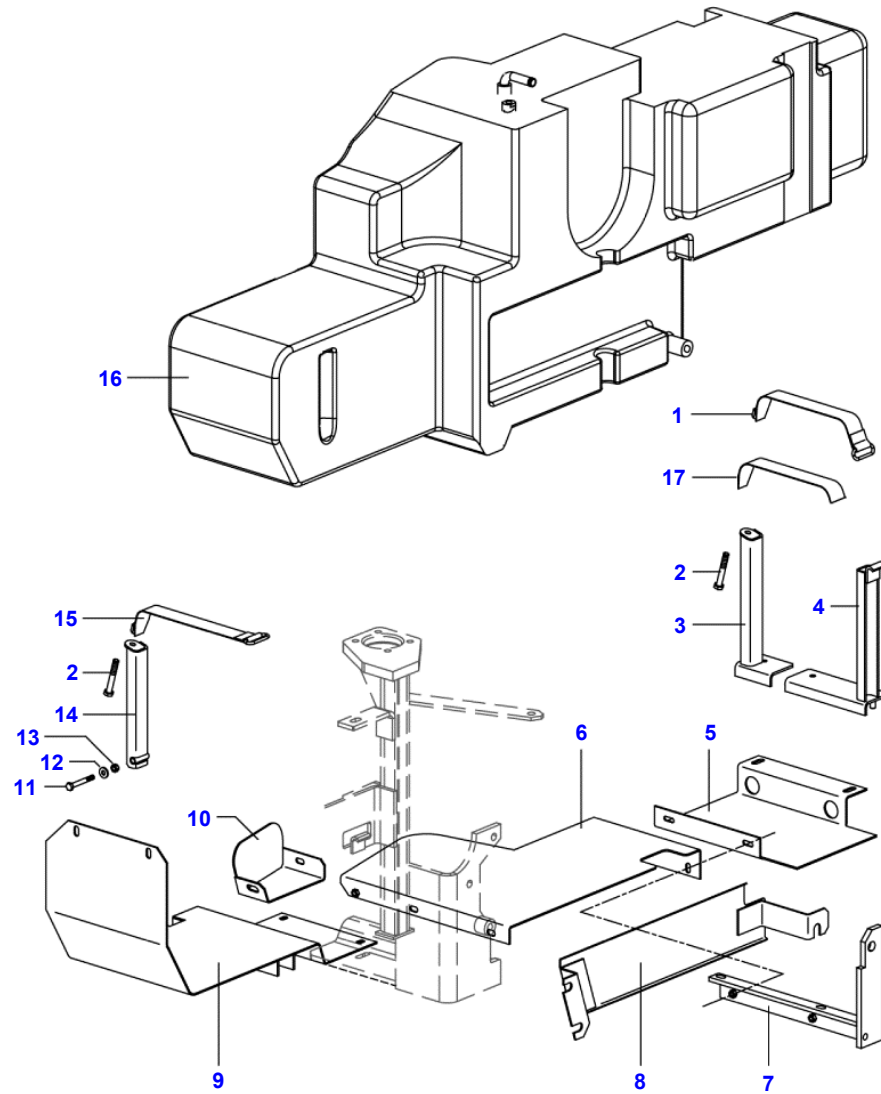
Item	Part Number	Qty	Description Comments	Technical Specification
1	6227423M1	1	HOSE	
2	020070T1	1	CLAMP	
3	6230976M1	4	CLAMP	68-77
4	6227117M1	3	HOSE	
5	6271679M1	1	PIPE	
6	6271678M1	1	PIPE	
7	6230978M1	3	CLAMP	86-95
8	6228605M1	1	COOLER	
9	6271680M91	1	BRACKET	
10	339291X1	2	HEXAGONAL HEAD BOLT	M8 X 55 ISO 8.8 ZN
11	390972X1	X	FLAT WASHER	M8 ZN
12	339169X1	X	HEX NUT	M8 (1.25) ISO 8 ZN
13	339374X1	X	LOCKWASHER	M8 ZN
14	339123X1	X	HEXAGONAL HEAD BOLT	M8 X 20 (1.25) ISO 8.8 ZN
15	390972X1	X	FLAT WASHER	M8 ZN
16	339374X1	X	LOCKWASHER	M8 ZN
17	339169X1	X	HEX NUT	M8 (1.25) ISO 8 ZN
18	339123X1	X	HEXAGONAL HEAD BOLT	M8 X 20 (1.25) ISO 8.8 ZN
19	339374X1	X	LOCKWASHER	M8 ZN
20	390972X1	X	FLAT WASHER	M8 ZN
21	057874P1	2	FOAM RING	



MF 7150 TRACTOR  
T0219078A

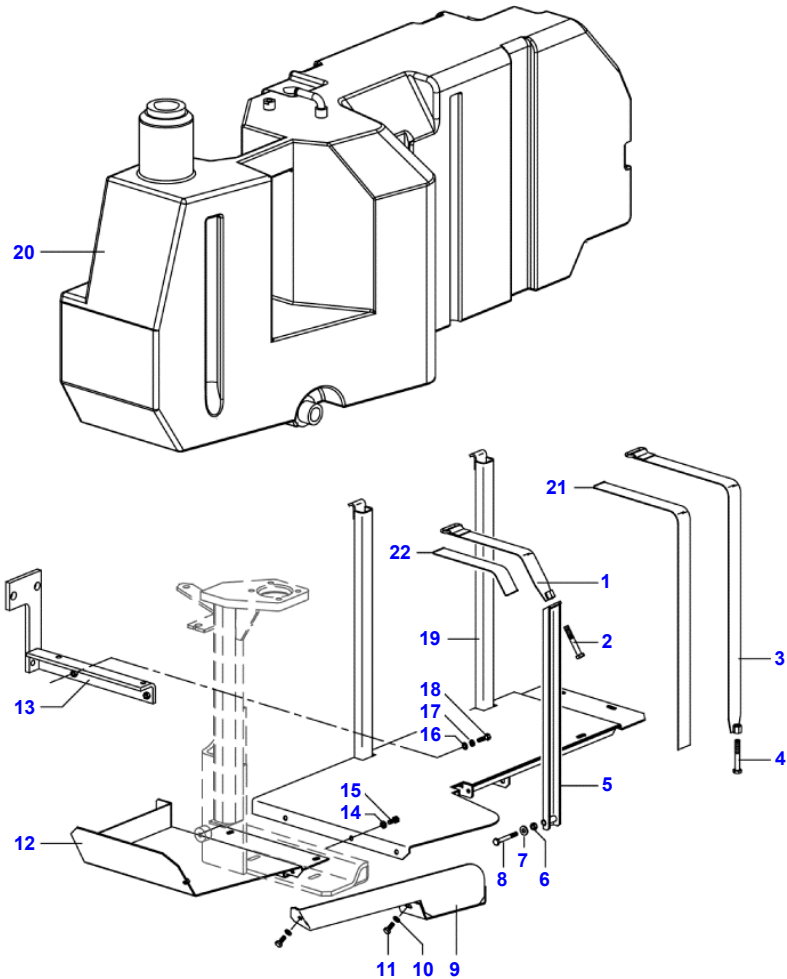
Massey Ferguson  
MF 7150 TRACTOR  
FUEL TANK  
RIGHT SIDE

C715001  
Page01-0013



Item	Part Number	Qty	Description Comments	Technical Specification
1	6201732M91	1	BAND	
2	1441865X1	X	METRIC BOLT	M10 X 1.5 X 708.8ZN
3	6237289M91	1	BRACKET	
	339376X1	3	LOCKWASHER	M10 ZN
4	6237264M91	1	BRACKET	
5	071966P1	1	GUARD	RH / LD
6	063535S2	1	BOWL	RH / LD
7	039830S3	1	BRACKET	
8	6233889M91	1	INSULATOR	RH / LD
9	6201883M91	1	GUARD RIGHT HAND	RH / LD
10	065299S1	1	COVER	RH / LD
11	339159X1	X	HEXAGONAL HEAD BOLT	M8 X 65 (1.25) ISO 8.8 ZN
12	339056X1	X	FLAT WASHER	Ø 8,5-20 X 2,5 MM ZN
13	394367X1	X	HEX NYLON INSERT LOCKNUT	M8 (1.25) ISO 8 ZN
14	6201842M91	1	COLUMN	
15	6201968M91	1	STRAP	
16	059586N3	1	TANK SEE PAGE 01-0017 UP TO SERIAL OR ENGINE NUMBER AAAT0015AGC001111	
	059586N4	1	RIGHT HAND FUEL TANK FROM SERIAL OR ENGINE NUMBER AAAT0015AGC001112 SEE PAGE 01-0018	RH / LD
17	6308036M1	1	FELT	

MF 7150 TRACTOR  
T0219078B



Massey Ferguson  
MF 7150 TRACTOR  
FUEL TANK  
LEFT SIDE

C715001

Page01-0014

Item	Part Number	Qty	Description Comments	Technical Specification
1	6201888M91	1	STRAP	
2	1441865X1	X	METRIC BOLT	M10 X 1.5 X 708.8ZN
3	6201858M91	1	STRAP	
4	1441865X1	X	METRIC BOLT	M10 X 1.5 X 708.8ZN
5	6201885M91	1	COLUMN	
6	394367X1	X	HEX NYLON INSERT LOCKNUT	M8 (1.25) ISO 8 ZN
7	339056X1	X	FLAT WASHER	Ø 8,5-20 X 2,5 MM ZN
8	339159X1	X	HEXAGONAL HEAD BOLT	M8 X 65 (1.25) ISO 8.8 ZN
9	065430S1	1	COVER	LH / LE
10	339374X1	5	LOCKWASHER	M8 ZN
11	339123X1	5	HEXAGONAL HEAD BOLT	M8 X 20 (1.25) ISO 8.8 ZN
12	063333S1	1	GUARD	LH
13	039603S1	1	BRACKET	LH / LE
16	339024X1	6	FLAT WASHER	Ø 8,4-17 X 2 MM ZN
17	339374X1	6	LOCKWASHER	M8 ZN
18	339761X1	6	HEXAGONAL HEAD BOLT	M8 X 25 (1.25) ISO 8.8 ZN
19	6201837M91	1	BOWL	LH / LE
20	6238000M92	1	FUEL TANK LEFT HAND SEE PAGE 01-0019 UP TO SERIAL OR ENGINE NUMBER AAAT0015AGC001111	
	6238000M93	1	LEFT HAND FUEL TANK FROM SERIAL OR ENGINE NUMBER AAAT0015AGC001112 SEE PAGE 01-0020	
21	6308042M1	1	FELT	
22	6308041M1	1	FELT	

MF 7150 TRACTOR  
T0219078C

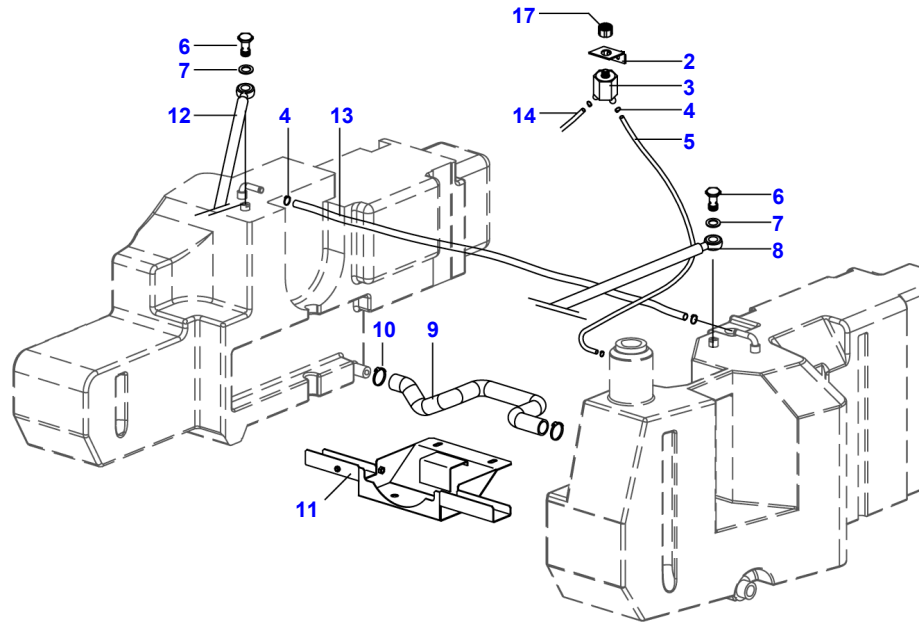
Massey Ferguson  
MF 7150 TRACTOR

C715001

FUEL TANK

Page01-0015

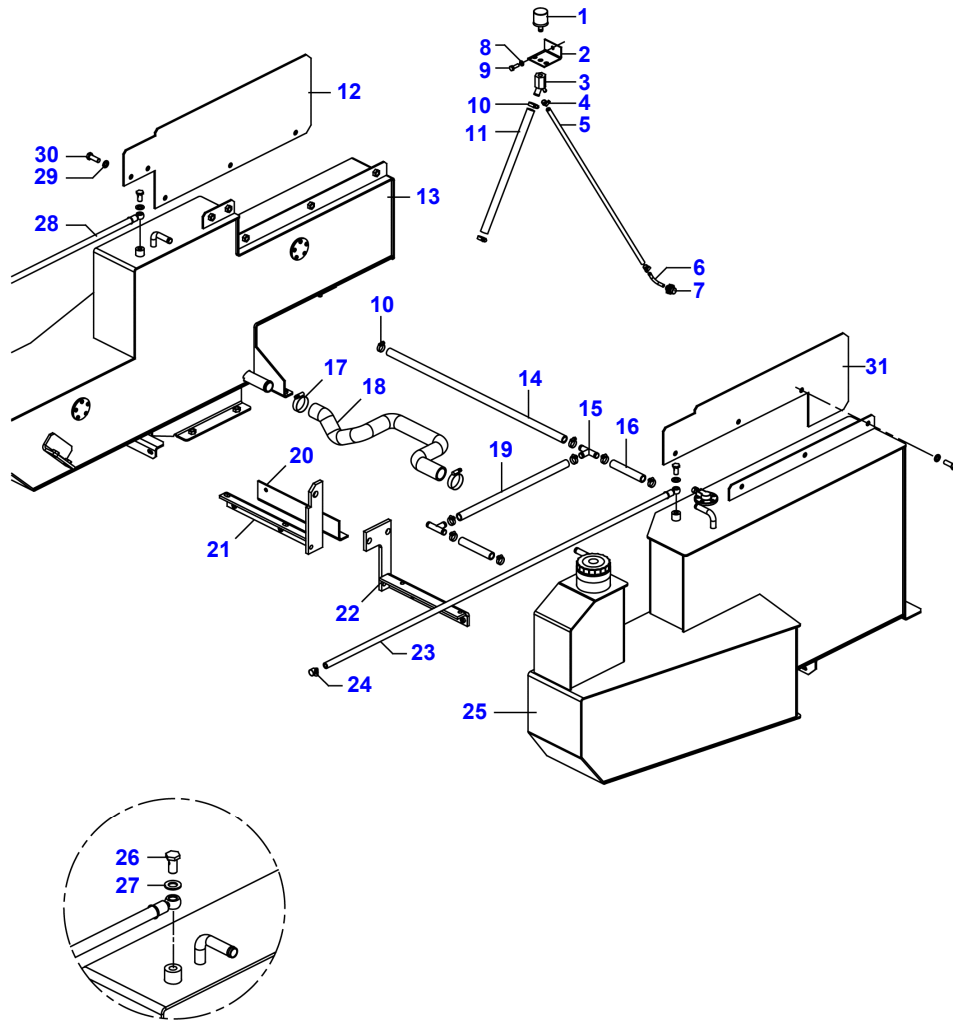
Item	Part Number	Qty	Description Comments	Technical Specification
2	6216435M1	1	BRACKET	
3	063891S1	1	NUT	
4	3019564X1	4	HOSE CLIP	Ø 16-25 X 8 MM ZN
5	6262739M1	1	HOSE	
6	1481691M1	3	BOLT	1/2-20 X 7/16
7	1480517M1	3	WASHER	18X13.2X1.5
8	6213167M91	1	HOSE	D10X1500
	353446X1	1	LOCK WASHER	5/16 ZN
	339123X1	1	HEXAGONAL HEAD BOLT	M8 X 20 (1.25) ISO 8.8 ZN
	1696473M1	2	CLIP	
9	6233892M1	1	HOSE	
10	490802M1	2	CLAMP	D1 3/4POL
11	6223354M91	1	KIT, GUARD	
12	6213166M91	1	FUEL HOSE	
13	6262739M1	1	HOSE	
14	052221P1	1	HOSE	
17	6238406M1	1	BREATHER	



MF 7150 TRACTOR  
T0219171B

Massey Ferguson  
MF 7150 TRACTOR  
FUEL TANK  
FORESTRY TRACTOR

C715001  
Page01-0016



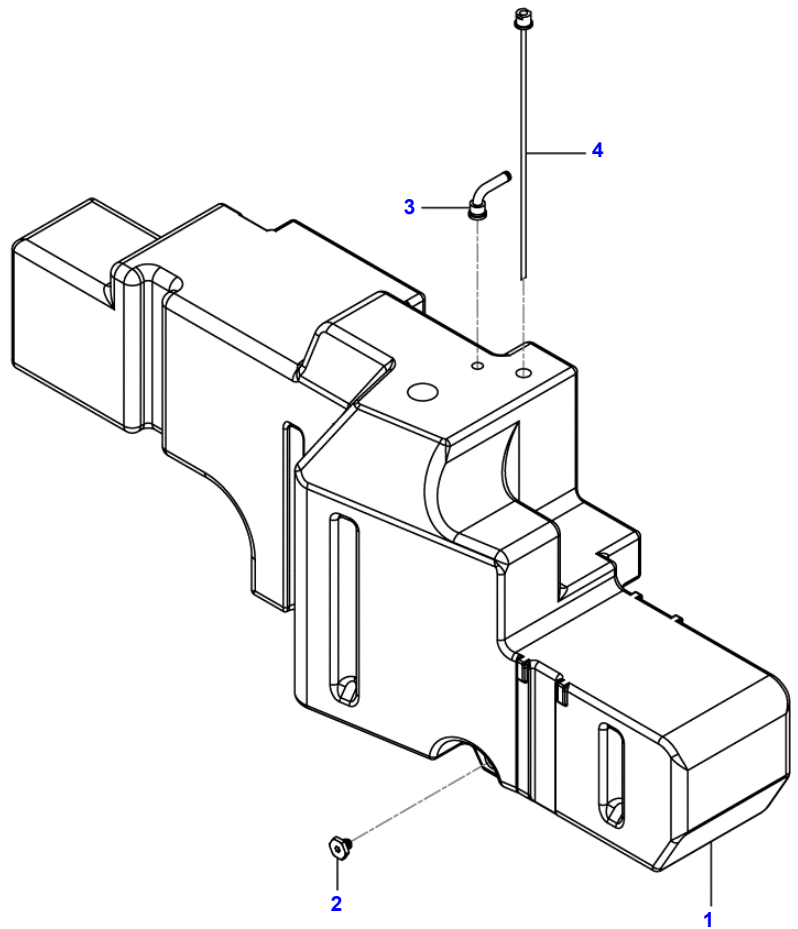
Item	Part Number	Qty	Description Comments	Technical Specification
1	022673N1	1	FILTER	
2	6216435M1	1	BRACKET	
3	063891S1	1	NUT	
4	3408858M1	2	CLAMP	
5	052221P1	1	HOSE	
6	6285535M1	1	TUBE	
7	1480485M92	1	CONNECTION	
8	339374X1	X	LOCKWASHER	M8 ZN
9	339761X1	X	HEXAGONAL HEAD BOLT	M8 X 25 (1.25) ISO 8.8 ZN
10	3019564X1	7	HOSE CLIP	Ø 16-25 X 8 MM ZN
11	6295409M1	1	HOSE	
12	6289671M1	1	PROTECTION	RH
13	6285523M91	1	TANK	
14	6288089M1	1	HOSE	
15	6288090M1	2	T-FITTING	
16	6288087M1	2	HOSE	
17	490802M1	2	CLAMP	D1 3/4POL
18	6233892M1	1	HOSE	
19	6288088M1	1	HOSE	
20	6294381M91	1	BRACKET	
21	039830S3	1	BRACKET RIGHT HAND	
22	039603S1	1	BRACKET LEFT HAND	LH / LE
23	6213167M91	1	HOSE	D10X1500
24	391087X1	2	HOSE CLIP	
25	6285524M91	1	TANK SEE PAGE 01-0025	
26	1481691M1	2	BOLT	1/2-20 X 7/16
27	1480517M1	2	WASHER	18X13.2X1.5
28	6213166M91	1	FUEL HOSE	
29	339369X1	X	LOCKWASHER	M12 ZN
30	390912X1	X	HEXAGONAL HEAD BOLT	M12 X 40 (1.75) ISO 8.8 ZN
31	6289670M1	1	PROTECTION LEFT HAND	LH

MF 7150 TRACTOR  
059586N3

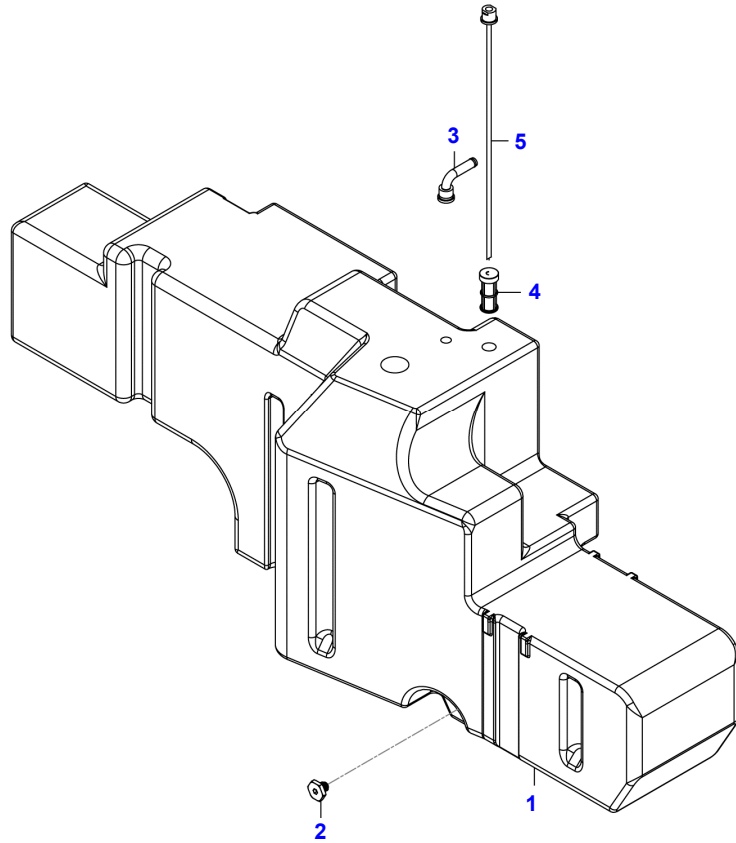
Massey Ferguson  
MF 7150 TRACTOR  
FUEL TANK RIGHT HAND  
(0000000000000001 - AAAT0015AGC001111)

C715001  
Page01-0017

Item	Part Number	Qty	Description Comments	Technical Specification
1	059587P3	1	TANK	
2	6313730M1	1	DRAIN PLUG	
3	6233627M1	1	BREATHER	
4	041689R1	1	PIPE	MX1

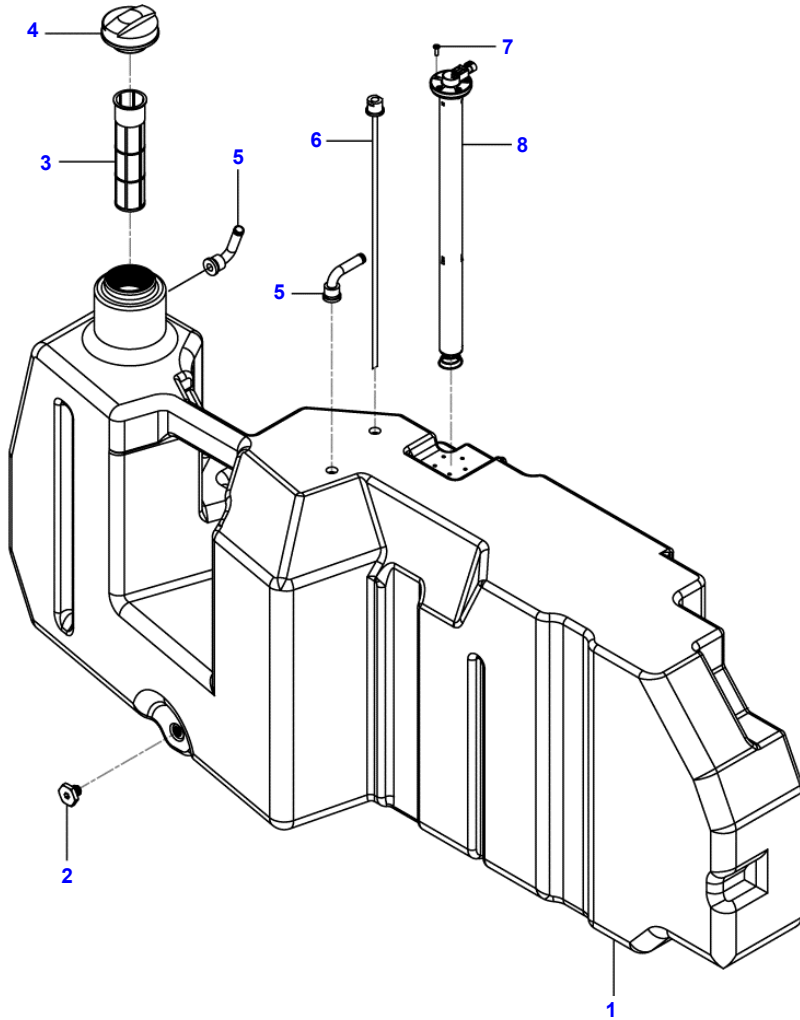






Item	Part Number	Qty	Description	Comments
1	059587P3	1	TANK	
2	6313730M1	1	DRAIN PLUG	
3	6233627M2	1	BREATHER	
4	6283612M91	1	MAIN FUEL FILTER	UP TO SERIAL OR ENGINE NUMBER JC001171
	ACW2371030	1	FUEL FILTER	FROM SERIAL OR ENGINE NUMBER JC001172
5	041689R2	1	SUCTION PIPE	

MF 7150 TRACTOR  
6238000M92

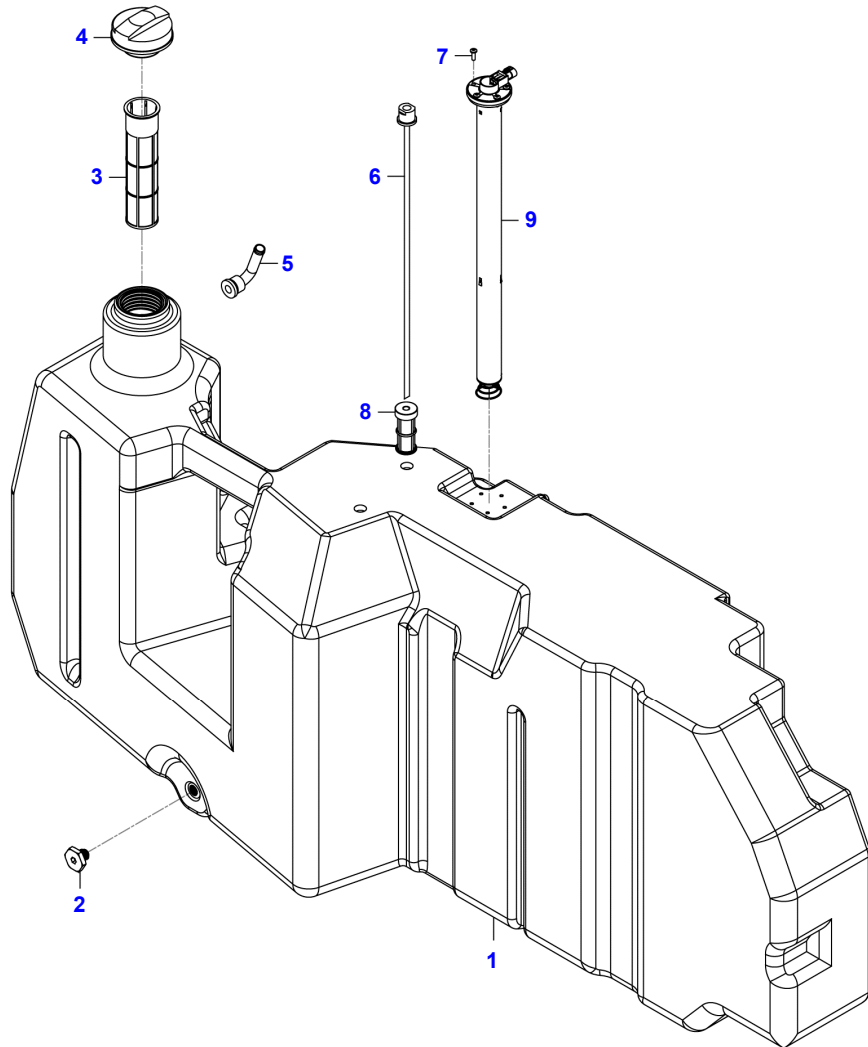


Massey Ferguson  
MF 7150 TRACTOR  
FUEL TANK LEFT HAND  
(0000000000000001 - AAAT0015AGC001111)

C715001  
Page01-0019

Item	Part Number	Qty	Description	Comments	Technical Specification
1	059589P3	1	TANK		
2	6313730M1	1	DRAIN PLUG		
3	6209575M1	1	FILTER ELEMENT		
4	073217N1	1	FUEL TANK CAP		
5	6233627M1	2	BREATHER		
6	041689R1	1	PIPE		MX1
7	3001163X1	5	PAN HEAD SCREW		M5 X 16 (0.8) ISO 4.8 ZN
8	6225799M1	1	SENDER		

MF 7150 TRACTOR  
18778873-J-1



Massey Ferguson  
MF 7150 TRACTOR  
FUEL TANK LEFT HAND  
(AAAT0015AGC001112 - 9999999999999999)

C715001  
Page01-0020

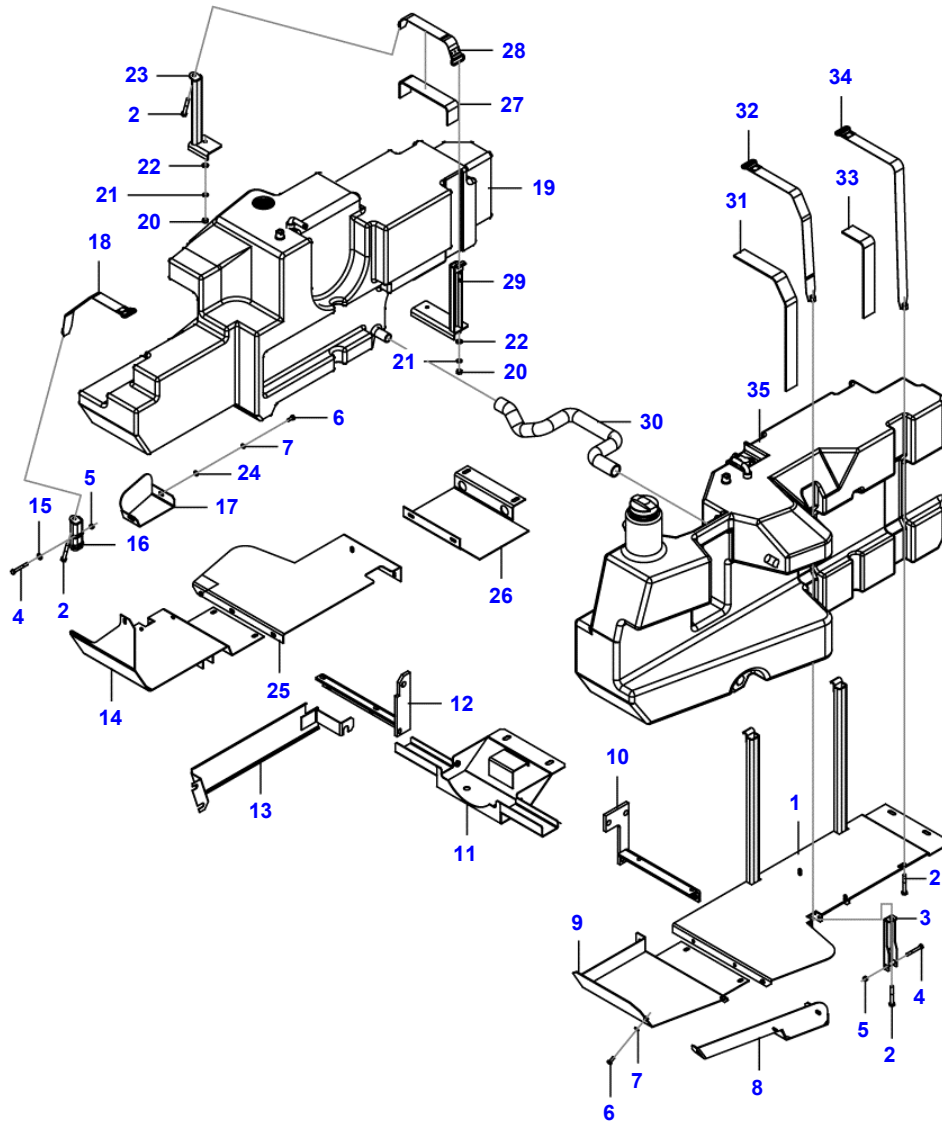
Item	Part Number	Qty	Description	Comments	Technical Specification
1	059589P3	1	TANK		
2	6313730M1	1	DRAIN PLUG		
3	6209575M1	1	FILTER ELEMENT		
4	073217N1	1	FUEL TANK CAP		
5	6233627M2	2	BREATHER		
6	041689R2	1	SUCTION PIPE		
7	3001163X1	5	PAN HEAD SCREW		M5 X 16 (0.8) ISO 4.8 ZN
8	6283612M91	1	MAIN FUEL FILTER	UP TO SERIAL OR ENGINE NUMBER JC001171	
	ACW2371030	1	FUEL FILTER	FROM SERIAL OR ENGINE NUMBER JC001172	
9	6225799M1	1	SENDER		

MF 7150 TRACTOR  
T0219129

Massey Ferguson  
MF 7150 TRACTOR  
FUEL TANK  
4 WHEELS DRIVE

C715001  
Page01-0021

Item	Part Number	Qty	Description Comments	Technical Specification
1	6201837M91	1	BOWL LEFT HAND	LH / LE
2	1441865X1	4	METRIC BOLT	M10 X 1.5 X 708.8ZN
3	6308030M91	1	PILLAR	
4	339159X1	2	HEXAGONAL HEAD BOLT	M8 X 65 (1.25) ISO 8.8 ZN
5	394367X1	2	HEX NYLON INSERT LOCKNUT	M8 (1.25) ISO 8 ZN
6	339123X1	5	HEXAGONAL HEAD BOLT	M8 X 20 (1.25) ISO 8.8 ZN
7	339374X1	5	LOCKWASHER	M8 ZN
8	065430S1	1	COVER	LH / LE
9	063333S1	1	LEFT HAND GUARD	LH
10	039603S1	1	LEFT HAND BRACKET	LH / LE
11	6223354M91	1	KIT, GUARD	
12	039830S3	1	RIGHT HAND BRACKET	
13	6233889M91	1	INSULATOR RIGHT HAND	RH / LD
14	6267430M91	1	RIGHT HAND GUARD	RH
15	339056X1	1	FLAT WASHER	Ø 8,5-20 X 2,5 MM ZN
16	6267428M91	1	PILLAR	
17	065299S1	1	RIGHT HAND COVER	RH / LD
18	6267494M91	1	TANK STRAP	
19	6267424M92	1	RIGHT HAND UP TO SERIAL OR ENGINE NUMBER AAAT0015AGC001111 SEE PAGE 01-0027	
6267424M93	1	RIGHT HAND FUEL TANK FROM SERIAL OR ENGINE NUMBER AAAT0015AGC001112 SEE PAGE 01-0028		
20	339402X1	3	HEX NUT	M10 (1.5) ISO 8 ZN
21	339376X1	3	LOCKWASHER	M10 ZN
22	339025X1	3	FLAT WASHER	Ø 10,5-21 X 2,5 MM ZN
23	6237289M91	1	BRACKET	
24	339024X1	2	FLAT WASHER	Ø 8,4-17 X 2 MM ZN
25	063535S2	1	RIGHT HAND BOWL	RH / LD
26	071966P1	1	LEFT HAND GUARD	
27	6308036M1	1	FELT	
28	6201732M91	1	BAND	
29	6237264M91	1	BRACKET	
30	6233892M1	1	HOSE	
31	6308035M1	1	FELT	
32	6308032M91	1	BAND	
33	6308027M1	1	FELT	
34	6269247M91	1	BAND	
35	6267426M92	1	LEFT HAND FUEL TANK UP TO SERIAL OR ENGINE NUMBER AAAT0015AGC001111 SEE PAGE 01-0022	
6267426M93	1	LEFT HAND FUEL TANK FROM SERIAL OR ENGINE NUMBER AAAT0015AGC001112 SEE PAGE 01-0023		



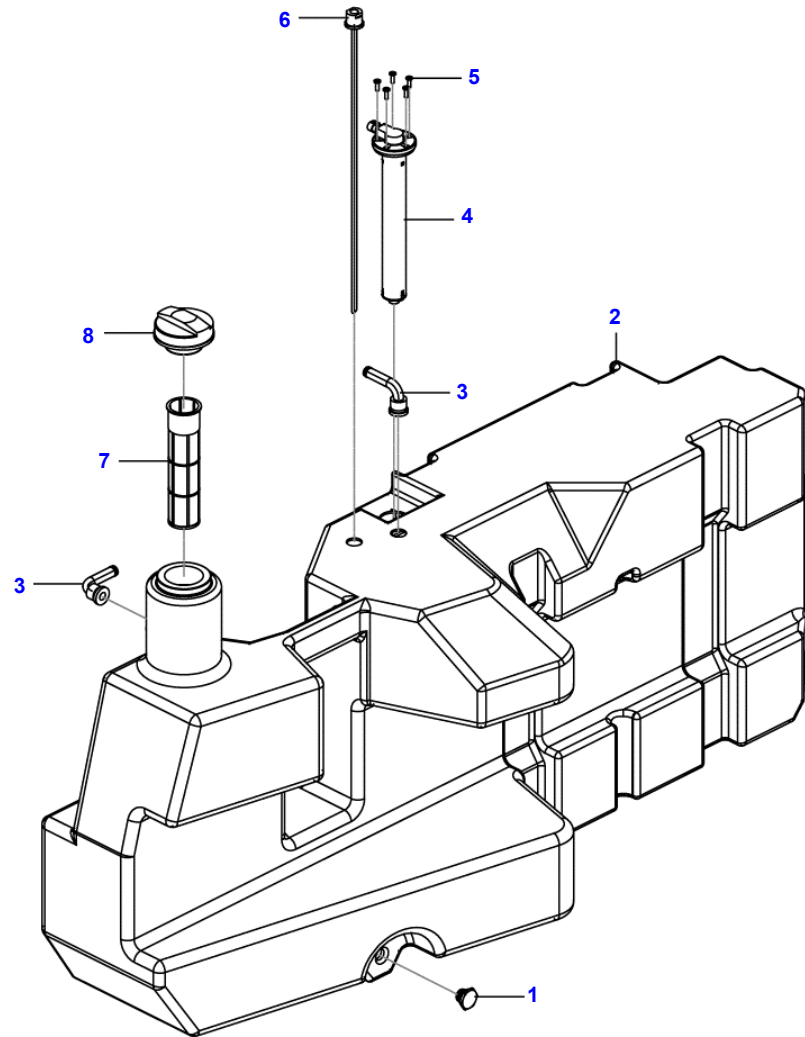
MF 7150 TRACTOR  
6267426M92

Massey Ferguson  
MF 7150 TRACTOR

C715001  
Page01-0022

FUEL TANK

Item	Part Number	Qty	Description Comments	Technical Specification
1	6305885M1	1	PLUG	
2	6267427M2	1	TANK	
3	6233627M1	2	BREATHER	
4	6272463M91	1	FUEL GAUGE FLOAT	
5	3001163X1	5	PAN HEAD SCREW	M5 X 16 (0.8) ISO 4.8 ZN
6	041689R1	1	PIPE	MX1
7	6209575M1	1	FILTER ELEMENT	
8	073217N1	1	FUEL TANK CAP	



MF 7150 TRACTOR  
6267426M93

Massey Ferguson

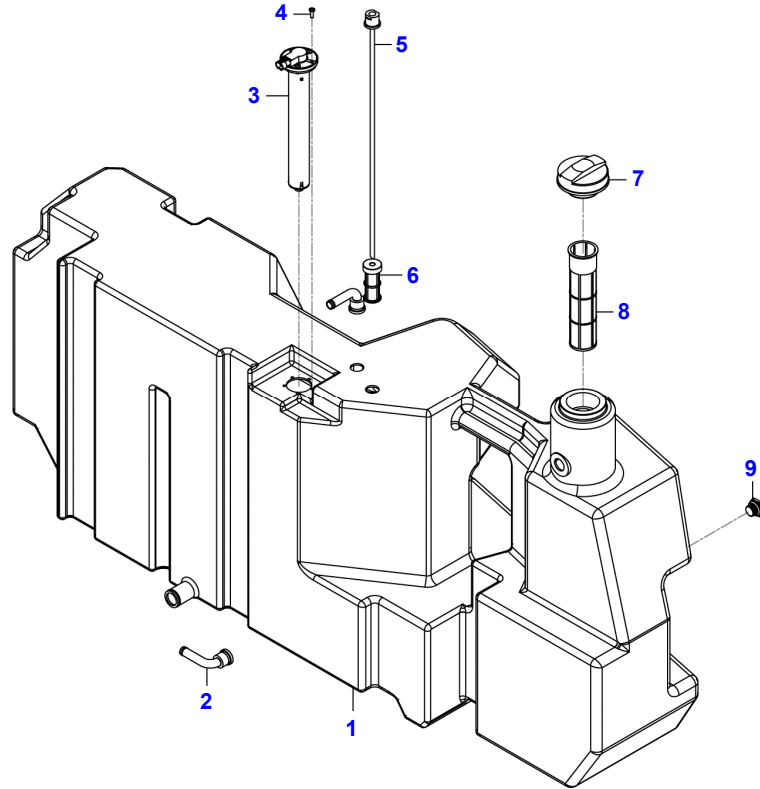
C715001

MF 7150 TRACTOR

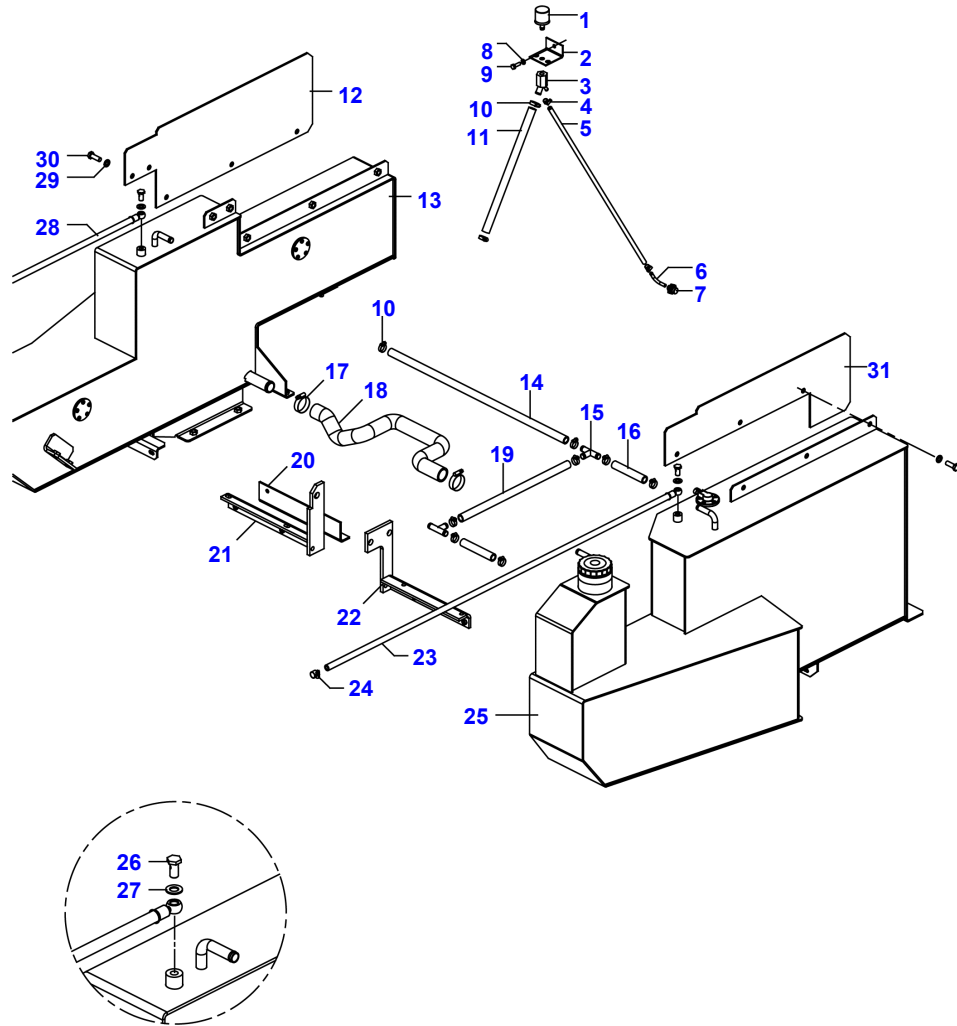
Page01-0023

FUEL TANK - LEFT SIDE

Item	Part Number	Qty	Description	Technical Specification
1	6267427M2	1	TANK	
2	6233627M2	2	BREATHER	
3	6272463M91	1	FUEL GAUGE FLOAT	
4	3001163X1	5	PAN HEAD SCREW	M5 X 16 (0.8) ISO 4.8 ZN
5	041689R2	1	SUCTION PIPE	
6	6283612M91	1	MAIN FUEL FILTER	
	ACW2371030	1	FUEL FILTER	
7	073217N1	1	FUEL TANK CAP	
8	6209575M1	1	FILTER ELEMENT	
9	6305885M1	1	PLUG	



MF 7150 TRACTOR  
T0219176B

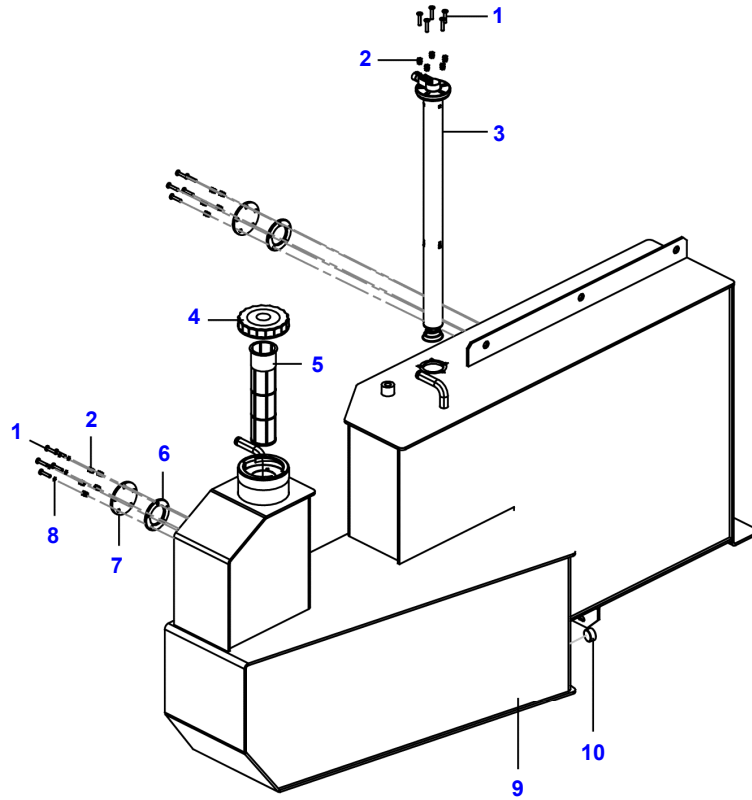


Massey Ferguson  
MF 7150 TRACTOR  
FUEL TANK  
FORESTRY TRACTOR

C715001  
Page01-0024

Item	Part Number	Qty	Description Comments	Technical Specification
1	022673N1	1	FILTER	
2	6216435M1	1	BRACKET	
3	063891S1	1	NUT	
4	3408858M1	2	CLAMP	
5	052221P1	1	HOSE	
6	6285535M1	1	TUBE	
7	1480485M92	1	CONNECTION	
8	339025X1	4	FLAT WASHER	Ø 10,5-21 X 2,5 MM ZN
9	339451X1	4	HEXAGONAL HEAD BOLT	M10 X 30 (1.5) ISO 8.8 ZN
10	3019564X1	7	HOSE CLIP	Ø 16-25 X 8 MM ZN
11	6295409M1	1	HOSE	
12	6289671M1	1	PROTECTION RIGHT HAND	RH
13	6285523M91	1	TANK RIGHT HAND	
14	6288089M1	1	HOSE	
15	6288090M1	2	T-FITTING	
16	6288087M1	2	HOSE	
17	490802M1	2	CLAMP	D1 3/4POL
18	6233892M1	1	HOSE	
19	6288088M1	1	HOSE	
20	6294381M91	1	BRACKET	
21	039830S3	1	BRACKET	
22	039603S1	1	BRACKET LEFT HAND	LH / LE
23	6213167M91	1	HOSE	D10X1500
24	391087X1	2	HOSE CLIP	
25	6285524M91	1	TANK LEFT HAND	
			SEE PAGE 01-0025	
27	1480517M1	2	WASHER	18X13.2X1.5
28	6213166M91	1	FUEL HOSE	
29	339369X1	X	LOCKWASHER	M12 ZN
30	391375X1	26	HEXAGONAL HEAD BOLT M12x1.75x30	M12 X 35 (1.75) ISO 8.8 ZN
31	6289670M1	1	PROTECTION LEFT HAND	LH

MF 7150 TRACTOR  
6285524M91



Massey Ferguson  
MF 7150 TRACTOR  
FUEL TANK  
FORESTRY TRACTOR

C715001  
Page01-0025

Item	Part Number	Qty	Description Comments	Technical Specification
1	392415X1	15	PAN HEAD SCREW	M5 X 25 (0.8) ISO 4.8 ZN
2	6285564M1	15	RIVET NUT	M5
3	6225799M1	1	SENDER	
4	6285563M1	1	FUEL TANK CAP	
5	6209575M1	1	FILTER ELEMENT	
6	3145402M1	2	GASKET	
7	6285545M1	2	PLUG	
8	3587711M1	10	WASHER	10X4.7X1.5
9	6285526M91	1	FUEL TANK LEFT HAND	LH / LE
10	6285562M1	1	DRAIN COVER	



This as a preview PDF file from [best-manuals.com](http://best-manuals.com)



Download full PDF manual at [best-manuals.com](http://best-manuals.com)