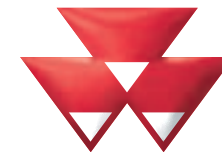


MF 8400

Series Tractors

Models: MF 8450 / 8460

TIER 3



MASSEY FERGUSON



PARTS CATALOG

CONTENT

TABLE OF CONTENT	2
ENGINE, FUEL AND EXHAUST SYSTEM	3
UP TO SERIAL OR ENGINE NUMBER T021081	4
ENGINE & EQUIPMENT	4
FROM T021082 GUARDS LEFT SIDE	6
ENGINE & EQUIPMENT	6
FROM T021082 GUARDS RIGHT SIDE	8
ENGINE & EQUIPMENT	8
ALTERNATOR & BRACKET	10
ALTERNATOR 150 AMP	11
UP TO S/N S051055 EXCEPT TRACTOR S/N S039058	12
STARTER	12
FROM S/N S051056 EXCEPT TRACTOR S/N S039058	13
STARTER	13
CYLINDER BLOCK	14
TIMING GEAR HOUSING	16
CRANKSHAFT, PISTON & CONNECTING RODS	18
VALVE MECHANISM AND CAMSHAFT	20
CYLINDER HEAD	21
UP TO U1010 MF8450 & UP TO U1961 MF8460	22
CYLINDER HEAD COVER	22
FROM U1011 MF8450 & FROM U1962 MF8460	23
CYLINDER HEAD COVER	23
OIL SUMP	24
LUBRICATING OIL COOLER AND FILTER	26
WATER PUMP	27
INJECTION SYSTEM	28
LOW PRESSURE FUEL SYSTEM	30
AIR INDUCTION & EXHAUST	31
TURBOCHARGER PIPES	32
UP TO U1010 MF8450 & UP TO U1961 MF8460	33
ELECTRONIC ENGINE MANAGEMENT	33
FROM U1011 MF8450 & FROM U1962 MF8460	34

ENGINE REPAIR KITS PISTONCYLINDER HEAD WITH VALVES	35
ENGINE GASKETS SETS	36
HEATER ENGINE BLOCK 110 V	37
HEATER ENGINE BLOCK 220 V	38
CENTRIGUAL OIL FILTER	39
CAB HEATING SYSTEM ENGINE PART	40
COOLING SYSTEM ENGINE	41
FUEL TANK & ATTACHMENTS	43
ADDITIONAL TANK	45
FUEL SYSTEM	46
FUEL PIPES	47
COOLING SYSTEM AIR CONDITIONED INSTALLATION	48
AIR CONDITIONER COMPRESSOR (COMPONENTS)	50
AIR COOLER	51
AIR FILTER DRY DUAL ELEMENT	52
VERTICAL EXHAUST ON THE SIDE	54
THROTTLE CONTROLS	56
AXLES	58
WEIGHT FRAME AND TOW PIN	59
WITH FRONT LIFT	62
WEIGHT FRAME AND TOW PIN	62
UP TO SERIAL OR ENGINE NUMBER R135034	64
WEIGHT FRAME AND TOW PIN	64
FROM SERIAL OR ENGINE NUMBER R135035	65
WEIGHT FRAME AND TOW PIN	65
FROM SERIAL OR ENGINE NUMBER R152044	66
BELLY WEIGHT	67
FRONT AXLE FIXED	68
FRONT AXLE 4 WHEEL DRIVE BRACKET	68
WITH SUSPENDED FRONT AXLE	69
FRONT AXLE 4 WHEEL DRIVE BRACKET	69
FRONT AXLE 4 WHEEL DRIVE DIFFERENTIAL LOCK MECHANISM	70
GUARD AND TRANSMISSION SHAFT	71
UP TO SERIAL OR ENGINE NUMBER R292043	71
WITH FIXED FRONT AXLE FROM R292044 UP TO T064026	72
GUARD AND TRANSMISSION SHAFT	72

WITH FIXED FRONT AXLE FROM T064027	73
GUARD AND TRANSMISSION SHAFT	73
WITH SUSPENDED FRONT AXLE FROM R292044 UP TO T022057	74
GUARD AND TRANSMISSION SHAFT	74
WITH SUSPENDED FRONT AXLE FROM T022058	75
FRONT AXLE 4 WHEEL DRIVE CLUTCH	76
FRONT AXLE 4 WHEEL DRIVE FRONT AXLE FIXED	78
WITH SUSPENDED FRONT AXLE	79
FRONT AXLE 4 WHEEL DRIVE	79
FRONT AXLE FIXED	80
FRONT AXLE 4 WHEEL DRIVE HOUSING	80
WITH SUSPENDED FRONT AXLE	81
FRONT AXLE 4 WHEEL DRIVE HOUSING	82
FRONT AXLE FIXED	83
FRONT AXLE 4 WHEEL DRIVE DIFFERENTIAL	83
WITH SUSPENDED FRONT AXLE	85
FRONT AXLE 4 WHEEL DRIVE DIFFERENTIAL	85
FRONT AXLE 4 WHEEL DRIVE FINAL DRIVE	87
FRONT AXLE FIXED	87
WITH SUSPENDED FRONT AXLE	89
FRONT AXLE 4 WHEEL DRIVE FINAL DRIVE	89
AUTO GUIDE SENSOR UP TO	91
FRONT AXLE 4 WHEEL DRIVE FINAL DRIVE	91
AUTO GUIDE SENSOR UP TO	92
FRONT AXLE 4 WHEEL DRIVE FINAL DRIVE	92
AUTO GUIDE SENSOR FROM I-ITA-334016 TYPE 750/601 / I-ITA-360179	93
AUTO GUIDE SENSOR FROM I-ITA-333960 TYPE 750/522 / K-ITA-311364	94
FRONT AXLE 4 WHEEL DRIVE FINAL DRIVE	94
HYDRAULIC VALVE BLOCK	95
STEERING SYSTEM	96
STEERING WHEEL AND TELESCOPIC COLUMN	97
STEERING WHEEL AND TELESCOPIC COLUMN (COMPONENTS)	98
STEERING PUMP (COMPONENTS)	99
STEERING PUMP AUTOGUIDE	100
AUTOGUIDE FROM T049003	101
STEERING HYDRAULIC LINES	101

AUTOGUIDE UP TO T049002.....	104
STEERING HYDRAULIC LINES.....	104
STEERING HYDRAULIC LINES AUTOGUIDE.....	105
DRIVE TRAIN SYSTEM.....	106
FRONT SPACER.....	107
FLYWHEEL & FLYWHEEL HOUSING.....	109
CLUTCH CONTROL.....	110
TRANSMISSION HOUSING.....	112
GEAR BOX.....	113
INNER HOUSING.....	114
PLANETARY DRIVE.....	115
PUMP SHAFT.....	117
ACCUMULATOR SHAFT.....	118
HYDRAULIC PUMP.....	119
HYDRAULIQUE MOTOR.....	120
DUCT PLATE.....	121
ADJUSTING DEVICE.....	122
TRANSMISSION CONTROL.....	123
FROM 903/0101 UP TO 903/0300 FROM 903/1001 UP TO 903/1779.....	123
FROM 903/1780 UP TO 903/2713.....	124
TRANSMISSION CONTROL.....	124
TRANSMISSION CONTROL FROM 903/2714.....	125
ADJUSTING DEVICE.....	126
GROUP GEAR SHIFTING.....	128
TRANSMISSION CONTROL EMERGENCY CONTROL DRIVE LINE.....	129
FROM 903/0101 UP TO 903/0300 FROM 903/1001 UP TO 903/1779.....	130
TRANSMISSION CONTROL EMERGENCY CONTROL RANGE.....	130
FROM 903/1780.....	131
TRANSMISSION CONTROL EMERGENCY CONTROL RANGE.....	131
CONTROL ARMREST.....	132
CONTROL ARMREST FINGERTIP.....	134
FOR DYNA-STEP TRACTORS UNITED STATES ONLY.....	135
CONTROL ARMREST.....	135
JOYSTICK FOR DISTRIBUTOR WITH ELECTRODYNAMIQUE CONTROL.....	137
MODULE FINGERTIP FOR DISTRIBUTOR WITH ELECTRODYNAMIQUE.....	138
WHEEL SHAFT HOUSING.....	139

OIL LEVEL INDICATOR	140
DIFFERENTIAL	141
BEVEL DRIVE	142
REAR AXLE HOUSINGS INNER FINAL DRIVE GEAR	144
LIFT ARMS	145
ANGLE SENSOR	146
BRAKE SYSTEM	147
BRACKETS PEDAL	148
BRAKE PEDALS	149
DISC BRAKES	150
CARDAN BRAKE	151
BRAKE VALVE	152
HANDBRAKE	153
HANDBRAKE WITHOUT BREAK BEAM	155
HANDBRAKE	156
HANDBRAKE TIE ROD	157
HYDRAULIC SYSTEM	158
FRONT SUSPENSION HYDRAULIC LINES	159
UP TO SERIAL OR ENGINE NUMBER T009011	160
BRAKES HYDRAULIC PIPES	160
FROM SERIAL OR ENGINE NUMBER T009012	161
BRAKES HYDRAULIC PIPES	163
HYDRAULIC BRAKE ASSY	164
PUMP DRIVE	165
LUBE OIL PUMP FILTER	166
FEED PUMP SYSTEM COMFORT	167
GEAR BOX LUBRICATION UP TO 903/.....	168
GEAR BOX LUBRICATION FROM NO 903/.....	169
GEAR BOX LUBRICATION INTERIOR	170
HYDRAULIC CIRCUIT TRANSMISSION	171
HYDRAULIC VALVE BLOCK	172
HYDRAULIC CIRCUIT TRANSMISSION	172
FROM 903/0101 UP TO 903/0300 FROM 903/1001 UP TO 903/3229	173
HYDRAULIC VALVE BLOCK PRESSURE FILTER	173
FROM 903/3230	174
HYDRAULIC VALVE BLOCK	175

HYDRAULIC VALVE BLOCK SOLENOID VALVE	176
HYDRAULIC VALVE BLOCK HYDRAULIC LINES	177
OIL COOLER TRANSMISSION HYDRAULIC	178
AUXILIARY HYDRAULICS TANK	180
ACCUMULATOR UP TO R321048 EXCEPT R313045	182
AUXILIARY HYDRAULICS	182
ACCUMULATOR R313045 & FROM R321049	183
AUXILIARY HYDRAULICS TRAILER BRAKING	184
FOR ITALY WITH TRAILER BRAKING / WITH SUSPENDED FRONT AXLE	185
AUXILIARY HYDRAULICS	185
UP TO SERIAL OR ENGINE NUMBER R285062	187
AUXILIARY HYDRAULICS	187
AUXILIARY HYDRAULICS PUMP FILTER SUCTION	189
HYDRAULIQUE MANIFOLD	190
UP TO SERIAL OR ENGINE NUMBER R285062	192
HYDRAULIQUE MANIFOLD	192
FROM SERIAL OR ENGINE NUMBER R285063	193
HYDRAULIQUE MANIFOLD	193
HYDRAULIC PUMP	194
HYDRAULIC COUPLING 4 DISTRIBUTORS ELECTRODYNAMIQUE	195
HYDRAULIC COUPLING 5 DISTRIBUTORS ELECTRODYNAMIQUE	196
HYDRAULIC COUPLING 6 DISTRIBUTORS ELECTRODYNAMIQUE	197
HYDRAULIC COUPLER	198
MALE COUPLER	199
HYDRAULIC LINES WITH 4 DISTRIBUTORS	200
AUXILIARY DISTRIBUTORS INSTALLATION	200
HYDRAULIC LINES WITH 4 DISTRIBUTORS	201
AUXILIARY DISTRIBUTORS INSTALLATION	201
HYDRAULIC LINES WITH 5 DISTRIBUTORS	202
AUXILIARY DISTRIBUTORS INSTALLATION	202
HYDRAULIC LINES WITH 5 DISTRIBUTORS	203
AUXILIARY DISTRIBUTORS INSTALLATION	203
HYDRAULIC LINES WITH 6 DISTRIBUTORS	204
AUXILIARY DISTRIBUTORS INSTALLATION	204
HYDRAULIC LINES WITH 6 DISTRIBUTORS	205
AUXILIARY DISTRIBUTORS INSTALLATION	205

AUXILIARY DISTRIBUTOR 4 DISTRIBUTORS ELECTRODYNAMIQUE.....	207
AUXILIARY DISTRIBUTOR 5 DISTRIBUTORS ELECTRODYNAMIQUE.....	208
AUXILIARY DISTRIBUTOR 6 DISTRIBUTORS ELECTRODYNAMIQUE.....	209
AUXILIARY DISTRIBUTOR.....	210
OIL RECOVERY.....	212
CONTROL WITH 2 DISTRIBUTORS ELECTRODYNAMIQUE AND 2 DUAL.....	213
4 DISTRIBUTORS.....	213
CONTROL WITH 2 DISTRIBUTORS ELECTRODYNAMIQUE +1 MECHANICAL.....	214
CONTROL WITH 5-6 DISTRIBUTORS ELECTRODYNAMIQUE MODULE.....	215
ELECTRICAL SYSTEM.....	216
WITHOUT BATTERY CUT-OFF W/O POSITIVE CONNECTION.....	217
BATTERIES AND CABLES.....	217
WITHOUT BATTERY CUT-OFF WITH POSITIVE CONNECTION.....	218
BATTERIES AND CABLES WITH BATTERY CUT-OFF.....	219
INSTRUMENT PANEL & INSTRUMENTS WITH DOT MATRIX.....	221
LIGHTING POWER SHUTTLE DRIVE.....	222
ELECTRIC EQUIPMENT & INSTRUMENT PANEL.....	223
SIDE CONSOLE SWITCHES.....	224
EXTERNAL CONTROLS FITTED ON THE REAR FENDERS.....	226
ENGINE HARNESS.....	227
TRAILOR ELECTRIC SOCKET NOT FOR USA.....	228
TRAILOR ELECTRIC SOCKET FOR UNITED STATES OF AMERICA.....	229
INSTRUMENT PANEL HARNESS.....	230
INSTRUMENT PANEL HARNESS ARMREST.....	231
FOR DYNA-STEP TRACTORS UNITED STATES ONLY.....	232
INSTRUMENT PANEL HARNESS ARMREST.....	232
INSTRUMENT PANEL HARNESS ARMREST FINGERTIP.....	233
PLATE RELAY & FUSE HOLDER.....	234
ROOF HARNESS.....	236
UP TO SERIAL OR ENGINE NUMBER T059059.....	237
ROOF HARNES AUTO GUIDE.....	237
FROM SERIAL OR ENGINE NUMBER T059060.....	238
ROOF HARNES AUTO GUIDE.....	238
PILLAR HARNESS.....	239
FIELD LIGHTS HARNESS HANDOLD.....	240
FRONT LIGHTING HARNESS.....	241

REAR LIGHTNING HARNESS	242
NOT FOR USA	242
REAR LIGHTNING HARNESS FOR UNITED STATES OF AMERICA	243
AUTOMATIC AIR CONDITIONER HARNESS & SENSORS	244
ELECTRONIC EQUIPMENT SENSORS	245
SENSOR HARNESS DUAL CONTROL	246
ELECTRONIC LIFT MAIN HARNESS	247
WITH DUAL CONTROL UP TO R298036	248
ELECTRONIC LIFT MAIN HARNESS	248
WITH DUAL CONTROL FROM R298037	249
WITHOUT DUAL CONTROL UP TO R298036	250
ELECTRONIC LIFT MAIN HARNESS	250
WITHOUT DUAL CONTROL FROM R298037	251
ELECTRONIC LIFT MAIN HARNESS	251
ELECTRONIC LIFT CONSOLE WITHOUT RADAR	252
ABOARD COMPUTER AND PLATE LIGHTING EQUIPEMENT	253
CONTROL BOX CAB WITH AUTOTRONIC 5	256
CONTROL BOX HARNESS & CAB CONTROLS	257
FRONT AXLE SUSPENDED HARNESS / CONTROL BOX	258
UP TO SERIAL OR ENGINE NUMBER R298036	259
TRANSMISSION MAIN HARNESS	259
FROM SERIAL OR ENGINE NUMBER R298037	260
FOR ITALY ONLY OR ANY TEXT IN ITALIAN ONLY	261
TRANSMISSION MAIN HARNESS	261
RADAR	262
AUTO-GUIDE	264
TOP DOCK	265
HARNESS "ISOBUS"	266
LIGHTING EQUIPMENT FRONT	267
LIGHTING EQUIPMENT FRONT FOR UNITED STATES OF AMERICA	269
FIELD LIGHTS	270
FIELD LIGHTS XENON / PIVOTING	271
TRAFFIC WARNING	272
LIGHTING EQUIPMENT REAR	274
FOR UNITED STATES OF AMERICA	275
ROTATING LIGHT	276

FIELDSTAR.....	278
CAB	279
CAB MOUNTINGS.....	280
CAB MOUNTINGS WITH SUSPENSION UP TO S333079.....	282
CAB MOUNTINGS WITH SUSPENSION FROM S333080.....	284
SUSPENDED CAB CONTROL UNIT.....	286
PRESSUE REGULATOR AND FILTER.....	287
SUSPENDED CAB CONTROL UNIT.....	287
COMPRESSOR UP TO S331034.....	288
SUSPENDED CAB CONTROL UNIT.....	288
COMPRESSOR FROM S331035.....	289
AIR TANK UP TO S331034.....	290
SUSPENDED CAB CONTROL UNIT.....	290
AIR TANK FROM S331035.....	291
SUSPENDED CAB CONTROL UNIT.....	291
TRACTOR CAB.....	292
DOORS.....	293
GLASS.....	295
SIDE WINDOW MECHANISM.....	296
REAR WINDOW MECHANISM.....	297
ROOF.....	298
HEATING HATCHWAY.....	299
HEATING HATCHWAY WITH "AUTO-GUIDE".....	300
AIR HATCHWAY.....	301
TRACTOR CAB CLADDING.....	302
TRACTOR CAB CLADDING DRESSING ROOF.....	303
TRACTOR CAB CLADDING.....	304
INSTRUMENT PANEL CLADDING.....	307
TRACTOR CAB CAB INSULATION.....	308
TRACTOR CAB FENDERS.....	310
AIR CONDITIONER HOSE.....	313
STANDARD ROOF MANUAL AIR CONDITIONER.....	314
STANDARD ROOF AUTOMATIC AIR CONDITIONER.....	315
AIR CONDITIONER HOSE.....	315
STANDARD ROOF MANUAL.....	316
AIR CONDITIONER.....	316

STANDARD ROOF AUTOMATIC	318
AIR CONDITIONER.....	318
CAB FILTER	320
HEATER CONTROL STANDARD ROOF	321
WINDSCREEN WASHER.....	322
FRONT WINDSCREEN WIPER	323
REAR WINDOW WIPER.....	324
CANOPY STANDARD ROOF	325
RADIO INSTALLATION.....	326
ELECTRICAL PLUG & CIGAR LIGHTER ISO STANDARD.....	327
ELECTRICAL PLUG & CIGAR LIGHTER SAE STANDARD	328
INTERNAL MIRRORS.....	329
EXTERNAL MIRRORS	330
ELECTRIC CONTROL REAR REFLECTING MIRROR UP TO T014046.....	331
ELECTRIC CONTROL REAR REFLECTING MIRROR FROM T014047	332
SEAT	333
AIR PRESSURE WITH AUTOMATIC ADJUSTMENT LUXURY	340
SEAT	342
SEAT BELT.....	344
SECONDARY SEAT	345
CHASSIS	346
SHEET METAL GRILLE.....	347
SHEET METAL HOOD	348
SHEET METAL SCREEN FRAME	349
UP TO T179031 INVALID FOR TRACTOR T172065	351
SHEET METAL HOOD FRAME.....	351
FROM T179032 VALID ALSO FOR TRACTOR T172065.....	352
SHEET METAL HOOD FRAME.....	352
FOOTSTEP.....	353
LITERATURE	354
LITERATURE WITH "AUTO-GUIDE".....	355
LITERATURE	356
DECALS	357
EMBLEMS.....	358
FOR DYNA-STEP TRACTORS UNITED STATES ONLY.....	359
SPEED CHARTS.....	359

DECALS SAFETY	360
FOR UK ONLY OR ANY TEXT IN ENGLISH ONLY	360
DECALS SAFETY	361
DECALS SAFETY FOR UNITED STATES OF AMERICA	362
FOR FRANCE ONLY OR ANY TEXT IN FRENCH ONLY	363
DECALS SAFETY	363
FOR GERMANY ONLY OR ANY TEXT IN GERMAN ONLY	364
DECALS SAFETY	364
FOR ITALY ONLY OR ANY TEXT IN ITALIAN ONLY	365
DECALS SAFETY FOR SPANISH	366
DECALS SAFETY FOR SWEDEN	367
DECALS SAFETY DENMARK	368
DECALS SAFETY FOR NORWAY	369
WHEELS	370
WHEEL HUB 10 HOLES ASSEMBLING	371
FRONT WHEELS 4 WHEEL DRIVE	371
WHEEL HUB 10 HOLES ASSEMBLING	372
RIGID	373
FRONT AXLE 4 WHEEL DRIVE MUDGUARDS AND SUPPORTS	373
PIVOTING	374
FRONT AXLE 4 WHEEL DRIVE MUDGUARDS AND SUPPORTS	374
PIVOTING	376
FRONT AXLE 4 WHEEL DRIVE MUDGUARDS AND SUPPORTS	376
REAR WHEELS WHEEL HUB 10 HOLES ASSEMBLING	377
REAR WHEELS	381
REAR WHEELS WHEEL HUB 10 HOLES ASSEMBLING	383
SHAFT DIAMETER 110MM WITH SPACERS FOR DUAL WHEELS CONE/	384
REAR WHEELS FIXING BY CONE	384
SHAFT DIAMETER 110 MM / CONE / WHEEL HUB REVERSED	385
WHEEL WEIGHTS	387
WHEEL WEDGES	389
IMPLEMENT DRIVE SYSTEM	390
INDEPENDANT POWER TAKE OFF CLUTCH UP TO 903/00200	391
INDEPENDANT POWER TAKE OFF CLUTCH	392
FROM 903/00201 UP TO 903/00300 FROM 903/01001	392
ENGINE P . T . O FLANGE BRIDLE	393

ENGINE P . T . O CYLINDER	394
ENGINE P . T . O PIPES	395
WITH CLEVIS QUICK ADJUSTMENT	396
GUARD PTO	396
IMPLEMENT LIFT SYSTEM REAR	398
FROM 903/00101 -UP TO 903/00300 -FROM 903/01001UP TO 903/01470	399
LIFT CYLINDERS RIGHT SIDE	399
LIFT CYLINDERS FROM 903/01471	400
FROM 903/00101 UP TO 903/00300 -FROM 903/01001UP TO 903/01613	401
LIFT CYLINDERS LEFT SIDE	401
LIFT CYLINDERS LEFT SIDE FROM 903/01614	402
LIFT CYLINDERS FEEDING	403
LINKAGE	405
LEVELLING BOX	406
TOP LINK WITH HOOK END	408
TOP LINK WITH BALL END	409
TOP LINK LOCK	410
SENSING PIN	411
LOWER BAR WITH HOOK	412
LOWER BAR WITH TOGGLE	413
TUBE STABILIZERS	414
AUTOMATIC STABILISERS	415
SHOE STABILISERS	416
DRAWBAR AND HITCH	417
SWINGING DRAWBAR WITH DROMONE AUTOMATIC HOOK	418
SWINGING DRAWBAR ISO STANDARD	419
SWINGING DRAWBAR SAE STANDARD	421
SWINGING DRAWBAR PITON ATTACHMENT	423
SWINGING DRAWBAR BALL AND SOSCKET HITCH	424
SWINGING DRAWBAR SUPPORT	425
SWINGING DRAWBAR SUPPORT WITH LONG HAY LADDER	427
WITH DROMONE AUTOMATIC HOOK	428
SWINGING DRAWBAR TIDYING	428
LONG HAY LADDER	429
HITCH	430
FOR ITALY ONLY OR ANY TEXT IN ITALIAN ONLY	431

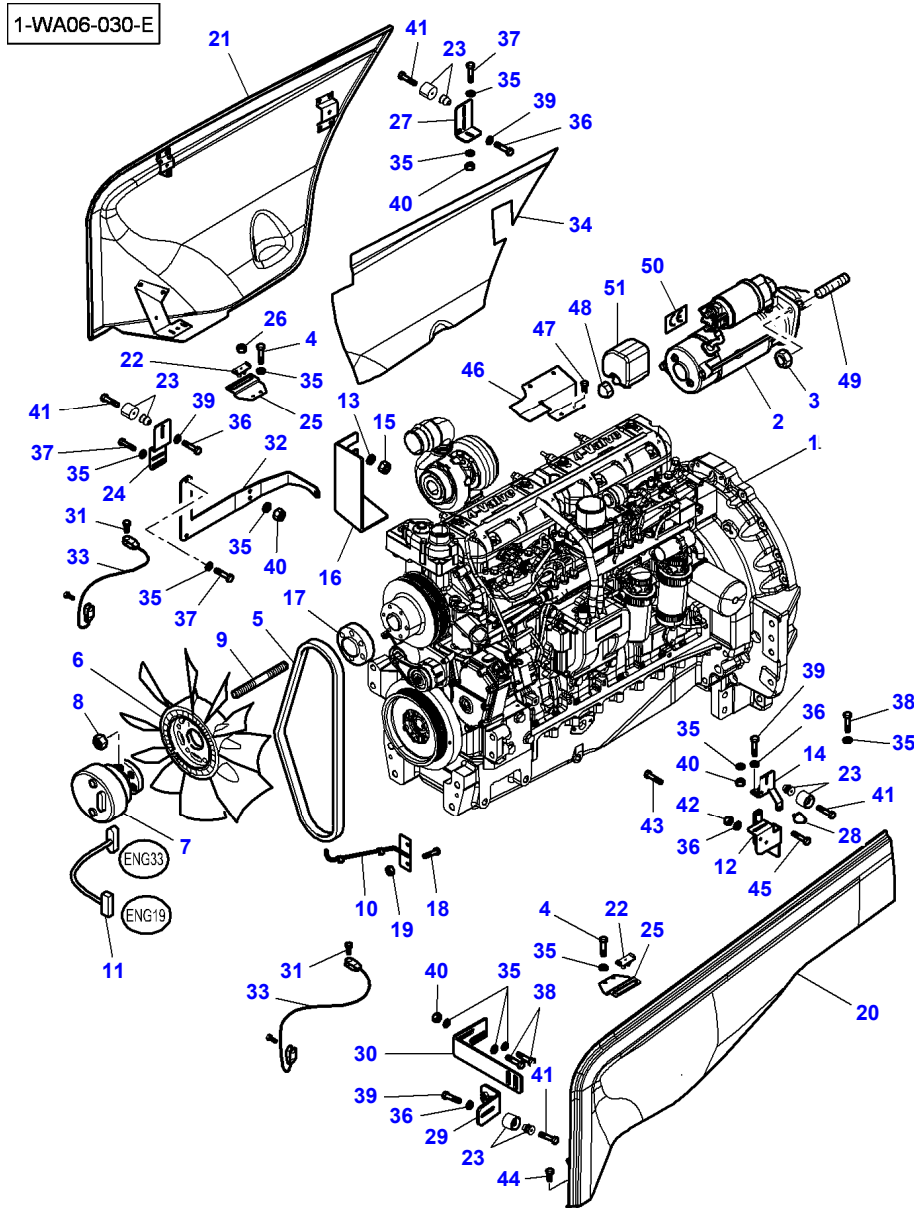
HITCH.....	431
FOR ITALY ONLY OR ANY TEXT IN ITALIAN ONLY.....	432
HITCH.....	432
FOR GERMANY ONLY OR ANY TEXT IN GERMAN ONLY.....	433
HITCH.....	433
AUTOMATIC HITCH WITH REMOTE CONTROL.....	434
AUTOHITCH DROMONE HYDRAULIC CONTROL.....	436
AUTOMATIC HITCH WITH REMOTE CONTROL.....	437
FRONT LINKAGE HYDRAULIC.....	438
FRONT LINKAGE HYDRAULIC ACCUMULATOR.....	439
WITH FRONT LINKAGE 35000N.....	440
FRONT LINKAGE HYDRAULIC.....	440
WITH FRONT LINKAGE 35000N.....	441
WITH FRONT LINKAGE 50000N.....	442
FRONT LINKAGE HYDRAULIC.....	442
WITH FRONT LINKAGE 50000N.....	443
FRONT LINKAGE HYDRAULIC.....	443
FRONT LINKAGE 35000N UP TO 16-APR-2007.....	444
FRONT LINKAGE 35000N FROM 17-APR-2007.....	446
FRONT LINKAGE 35000N.....	447
FRONT LINKAGE 50000N.....	448
WITH SUSPENDED FRONT AXLE UP TO S155024.....	448
WITH FRONT AXLE SUSPENDED FROM S155025.....	450
FRONT LINKAGE 50000N.....	450
GENERAL INFORMATION.....	452
DEALER STOCKING LIST QUANTITY BY TRACTOR.....	453

Massey Ferguson**MF 8450 / 8460 TRACTORS (TIER 3) - |---> P341051 / |---> P325039 (EXCEPT P332013) - 3906070****3906070****TABLE OF CONTENT****Page00-TOC**

Page Number	Page Title	Page Reference
01-000-TOC	ENGINE, FUEL AND EXHAUST SYSTEM	01-000-TOC
02-000-TOC	AXLES	02-000-TOC
03-000-TOC	STEERING SYSTEM	03-000-TOC
04-000-TOC	DRIVE TRAIN SYSTEM	04-000-TOC
05-000-TOC	BRAKE SYSTEM	05-000-TOC
06-000-TOC	HYDRAULIC SYSTEM	06-000-TOC
07-000-TOC	ELECTRICAL SYSTEM	07-000-TOC
08-000-TOC	CAB	08-000-TOC
09-000-TOC	CHASSIS	09-000-TOC
10-000-TOC	DECALS	10-000-TOC
11-000-TOC	WHEELS	11-000-TOC
12-000-TOC	IMPLEMENT DRIVE SYSTEM	12-000-TOC
13-000-TOC	IMPLEMENT LIFT SYSTEM REAR	13-000-TOC
14-000-TOC	LINKAGE	14-000-TOC
15-000-TOC	GENERAL INFORMATION	15-000-TOC

Massey Ferguson**MF 8450 / 8460 TRACTORS (TIER 3) - |---> P341051 / |---> P325039 (EXCEPT****3906070****P332013) - 3906070****ENGINE, FUEL AND EXHAUST SYSTEM****Page01-000-TOC**

Page Number	Page Title	Page Reference
01-0001	ENGINE & EQUIPMENT - UP TO SERIAL OR ENGINE NUMBER T021081	WA061030-1A
01-0002	ENGINE & EQUIPMENT - FROM T021082 - GUARDS - LEFT SIDE	WA061053-1A
01-0003	ENGINE & EQUIPMENT - FROM T021082 - GUARDS - RIGHT SIDE	WA061054-1A
01-0004	ALTERNATOR & BRACKET	WA101014-1A
01-0005	ALTERNATOR - 150 AMP	WC351005-1A
01-0006	STARTER - UP TO S/N S051055 - EXCEPT TRACTOR S/N S039058	WC511001-1A
01-0007	STARTER - FROM S/N S051056 - EXCEPT TRACTOR S/N S039058	WC511004-1A
01-0008	CYLINDER BLOCK	WH011010-1A
01-0009	TIMING GEAR HOUSING	WH201006-1A
01-0010	CRANKSHAFT, PISTON & CONNECTING RODS	WH021012-1A
01-0011	VALVE MECHANISM AND CAMSHAFT	WH221004-1A
01-0012	CYLINDER HEAD	WH031011-1A
01-0013	CYLINDER HEAD COVER - UP TO U1010 MF8450 & UP TO U1961 MF8460	WH231006-1A
01-0014	CYLINDER HEAD COVER - FROM U1011 MF8450 & FROM U1962 MF8460	WH231010-1A
01-0015	OIL SUMP	WH111008-1A
01-0016	LUBRICATING OIL COOLER AND FILTER	WH261005-1A
01-0017	WATER PUMP	WH281005-1A
01-0018	INJECTION SYSTEM	WH091017-1A
01-0019	LOW PRESSURE FUEL SYSTEM	WH141013-1A
01-0020	AIR INDUCTION & EXHAUST	WH181012-1A
01-0021	TURBOCHARGER - PIPES	WH241002-1A
01-0022	ELECTRONIC ENGINE MANAGEMENT - UP TO U1010 MF8450 & UP TO U1961 MF8460	WH401003-1A
01-0023	ELECTRONIC ENGINE MANAGEMENT - FROM U1011 MF8450 & FROM U1962 MF8460	WH401013-1A
01-0024	ENGINE REPAIR KITS - PISTON- CYLINDER HEAD WITH VALVES	WH301003-1A
01-0025	ENGINE GASKETS SETS	WH151007-1A
01-0026	HEATER ENGINE BLOCK - 110 V	WC381004-1A
01-0027	HEATER ENGINE BLOCK - 220 V	WC381003-1A
01-0028	CENTRIGUAL OIL FILTER	WA131001-1A
01-0029	CAB HEATING SYSTEM - ENGINE PART	WC281004-1A
01-0030	COOLING SYSTEM - ENGINE	WC231019-1A
01-0031	COOLING SYSTEM - ENGINE	WC231032-1A
01-0032	FUEL TANK & ATTACHMENTS	WC021014-1A
01-0033	ADDITIONAL TANK	WC041006-1A
01-0034	FUEL SYSTEM	WC641011-1A
01-0035	FUEL PIPES	WH161005-1A
01-0036	COOLING SYSTEM - AIR CONDITIONED INSTALLATION	WC081023-1A
01-0037	AIR CONDITIONER COMPRESSOR - (COMPONENTS)	WC491001-1A
01-0038	AIR COOLER	WC651002-1A
01-0039	AIR FILTER - DRY - DUAL ELEMENT	WC201022-1A
01-0040	AIR FILTER - DRY - DUAL ELEMENT	WC201015-1A
01-0041	VERTICAL EXHAUST ON THE SIDE	WC111007-1A
01-0042	THROTTLE CONTROLS	WC141011-1A
01-0043	THROTTLE CONTROLS	WC141002-1A



Item	Part Number	Qty	Description Comments	Technical Specification
1	V835061164	1	ENGINE UP TO MACHINE S/N R345035 MF 8450 [A]	74 CTA-4V
	V865061164X	1	SHORT BLOCK ENGINE UP TO MACHINE S/N R345035 MF 8450 [C]	74 CTA-4V
	V835076118	1	ENGINE FROM MACHINE S/N R345036 MF 8450 R / R. OLD NOT INTERCHANGEABLE WITH NEW V835061744 [A]	74 CTA-4V
	V865061744X	1	SHORT BLOCK ENGINE FROM MACHINE S/N R345036 MF 8450 [C]	
	V835061165	1	ENGINE UP TO MACHINE S/N R348017 MF 8460 [A]	74 CTA-4V
	V865061165X	1	SHORT BLOCK ENGINE UP TO MACHINE S/N R348017 MF 8460 [C]	74 CTA-4V
	V835076119	1	ENGINE FROM MACHINE S/N R348018 MF 8460 R / R. OLD NOT INTERCHANGEABLE WITH NEW V835061745 [A]	74 CTA-4V
	V865061745X	1	SHORT BLOCK ENGINE FROM MACHINE S/N R348018 MF 8460 [C]	
2	3823621M91	1	STARTERMOTOR SEE PAGE 01-0006 UP TO MACHINE S/N S051055 [B][D]	
	4288991M2	1	STARTERMOTOR FROM MACHINE S/N S051056 SEE PAGE 01-0007 [B][D]	
3	1441932X1	3	TOP LOCK NUT	M10 (1.5) ISO 8 ZN
4	339009X1	4	HEXAGONAL HEAD BOLT	M8 X 35 (1.25) ISO 8.8 ZN
5	4284981M1	1	BELT LENGTH 1824 MM	
6	4274231M1	1	FAN DIAMETER 650 MM	
7	4276064M1	1	CLUTCH	
8	1441932X1	6	TOP LOCK NUT	M10 (1.5) ISO 8 ZN
9	3011353X1	6	STUD BOLT	M10X52-ISO 8.8-ZN
10	4276881M4	1	SUPPORT	
11	4272811M4	1	HARNESS	
12	4284510M3	1	SUPPORT	
13	390734X1	2	PLAIN WASHER	Ø 10-21 X 2 MM
14	4281581M1	1	SUPPORT	

Massey Ferguson

MF 8450 / 8460 TRACTORS (TIER 3) - |---> P341051 / |---> P325039 (EXCEPT P332013) - 3906070

3906070

ENGINE & EQUIPMENT

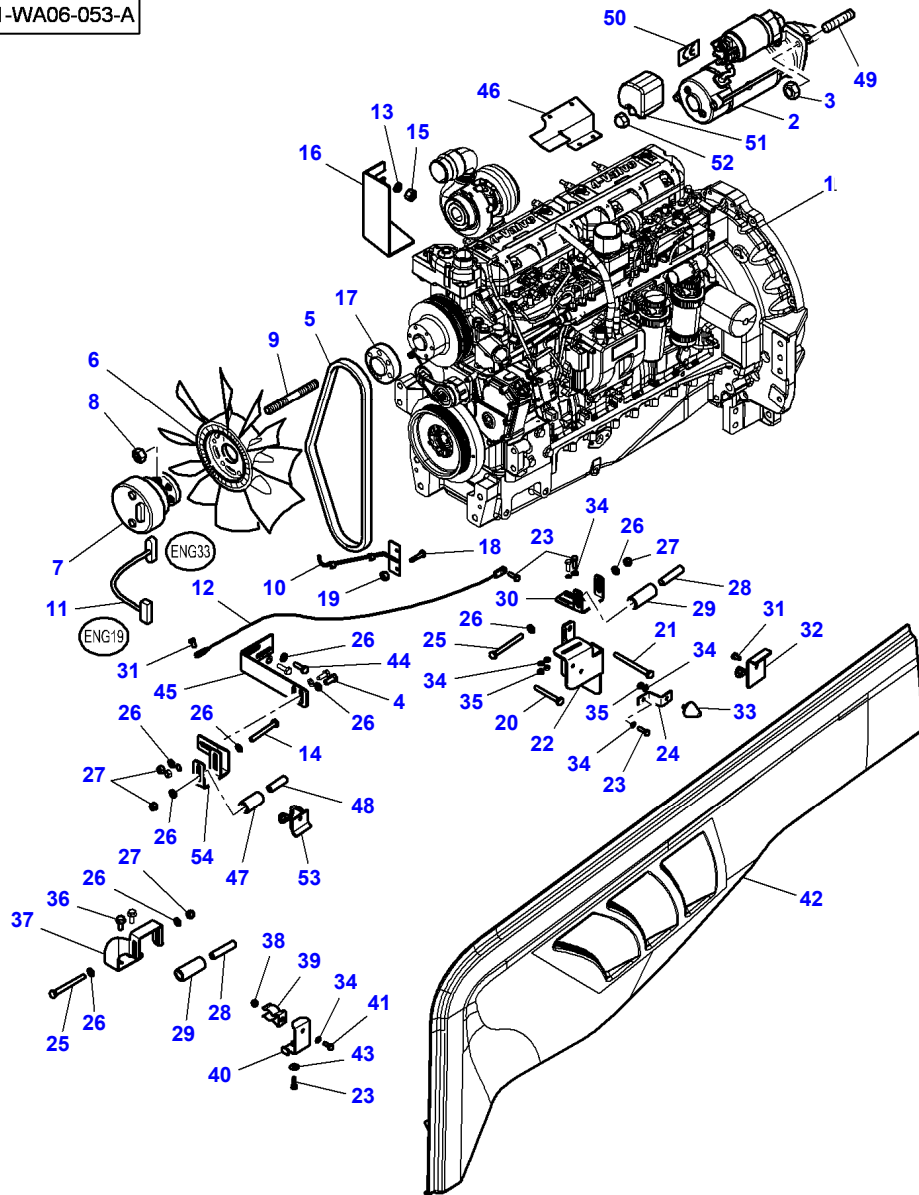
Page01-0001

UP TO SERIAL OR ENGINE NUMBER T021081

Item	Part Number	Qty	Description Comments	Technical Specification
15	1441932X1	2	TOP LOCK NUT	M10 (1.5) ISO 8 ZN
16	4276812M4	1	COWL	
17	4270818M1	1	SPACER THICKNESS 30 MM	
18	339560X1	2	HEXAGONAL HEAD BOLT	M6 X 16 (1.0) ISO 8.8 ZN
19	339030X1	2	HEX NUT	M6 (1.0) ISO 8 ZN
20	4275844P92	1	LEFT HAND PANEL	
21	4276108P92	1	LEFT HAND RIGHT HAND PANEL RIGHT HAND	
22	3800376M1	2	BUFFER	
23	72502409	4	RUBBER	
24	4270244M5	1	SUPPORT	
25	4288360M1	2	SUPPORT	
26	3010021X1	2	RIVET	4.8X9-STEEL-ZN
27	4270260M2	1	SUPPORT	
28	3780947M1	1	STOP	
29	4270673M2	1	SUPPORT	
30	4273770M2	1	SUPPORT, LEFT HAND	
31	339560X1	4	HEXAGONAL HEAD BOLT	M6 X 16 (1.0) ISO 8.8 ZN
32	4281865M2	1	SUPPORT	
33	3783347M2	2	CABLE	
34	4275845M1	1	PROTECTION	
35	390972X1	22	PLAIN WASHER	M8 ZN
36	390971X1	X	FLAT WASHER	M6 ZN
37	339124X1	5	HEXAGONAL HEAD BOLT	M8 X 16 (1.25) ISO 8.8 ZN
38	339761X1	6	HEXAGONAL HEAD BOLT	M8 X 25 (1.25) ISO 8.8 ZN
39	391074X1	4	HEXAGONAL HEAD BOLT	M6 X 12 (1.0) ISO 8.8 ZN
40	339169X1	7	HEX NUT	M8 (1.25) ISO 8 ZN
41	339804X1	4	HEXAGONAL HEAD BOLT	M6 X 25 (1.0) ISO 8.8 ZN
42	339030X1	X	HEX NUT	M6 (1.0) ISO 8 ZN
43	339761X1	2	HEXAGONAL HEAD BOLT	M8 X 25 (1.25) ISO 8.8 ZN
44	3010021X1	2	RIVET	4.8X9-STEEL-ZN
45	339159X1	2	HEXAGONAL HEAD BOLT	M8 X 65 (1.25) ISO 8.8 ZN
46	4291061M2	1	COWL FROM MACHINE S/N R327071	
47	339124X1	3	HEXAGONAL HEAD BOLT FROM MACHINE S/N R327071 UP TO MACHINE S/N S102002	M8 X 16 (1.25) ISO 8.8 ZN
48	3786092M1	1	NUT METRIC	M10
49	391005X1	3	STUD BOLT FROM MACHINE S/N S051056	M10 X 25 ISO 8.8 ZN
50	3788193M1	1	LABEL	
51	3786093M1	1	PROTECTION	

[A] INCLUDES FLYWHEEL**[B] THE APPROPRIATE SAFETY DECALS MUST BE ORDERED AND FITTED TO THIS PART****[C] NOT ILLUSTRATED****[D] EXCEPT TRACTOR NO S039058**

1-WA06-053-A



Item	Part Number	Qty	Description Comments	Technical Specification
1	V835076118	1	ENGINE MF 8450 R / R. OLD NOT INTERCHANGEABLE WITH NEW V835061744 [A]	74 CTA-4V
	V865061744X	1	SHORT BLOCK ENGINE UP TO MACHINE S/N T022080 MF 8450 [C]	
	V865076118X	1	SHORT BLOCK ENGINE FROM MACHINE S/N T022081 MF 8450 [C]	
	V835076119	1	ENGINE MF 8460 R / R. OLD NOT INTERCHANGEABLE WITH NEW V835061745 [A]	74 CTA-4V
	V865061745X	1	SHORT BLOCK ENGINE UP TO MACHINE S/N T036046 MF 8460 [C]	
	V865076119X	1	SHORT BLOCK ENGINE FROM MACHINE S/N T036047 MF 8460 [C]	
2	4288991M2	1	STARTERMOTOR [B]	
3	339402X1	3	HEX NUT	M10 (1.5) ISO 8 ZN
4	339123X1	2	HEXAGONAL HEAD BOLT	M8 X 20 (1.25) ISO 8.8 ZN
5	4284981M1	1	BELT UP TO MACHINE S/N T128080 LENGTH 1824 MM	L : 1815 MM
	4296120M1	1	BELT FROM MACHINE S/N T128081	
6	4274231M1	1	FAN DIAMETER 650 MM	
7	4276064M1	1	CLUTCH	
8	1441932X1	6	TOP LOCK NUT	M10 (1.5) ISO 8 ZN
9	3011353X1	6	STUD BOLT	M10X52-ISO 8.8-ZN
10	4276881M4	1	SUPPORT	
11	4272811M4	1	HARNES	
12	3783347M2	1	CABLE	
13	390734X1	2	PLAIN WASHER	Ø 10-21 X 2 MM
14	390246X1	1	HEXAGONAL HEAD BOLT	M8 X 70 (1.25) ISO 8.8 ZN
15	1441932X1	2	TOP LOCK NUT	M10 (1.5) ISO 8 ZN
16	4276812M4	1	COWL	
17	4270818M1	1	SPACER THICKNESS 30 MM	
18	339560X1	2	HEXAGONAL HEAD BOLT	M6 X 16 (1.0) ISO 8.8 ZN
19	339030X1	2	HEX NUT	M6 (1.0) ISO 8 ZN
20	339159X1	1	HEXAGONAL HEAD BOLT	M8 X 65 (1.25) ISO 8.8 ZN
21	3015258X1	1	HEXAGONAL HEAD BOLT	M8 X 95 ISO 8.8 ZN
22	4284510M3	1	SUPPORT	
23	339666X1	5	HEXAGONAL HEAD BOLT	M6 X 20 (1.0) ISO 8.8 ZN
24	4293019M1	1	SUPPORT	
25	391286X1	4	HEXAGONAL HEAD BOLT	M8 X 85 (1.25) ISO 8.8 ZN
26	390972X1	16	PLAIN WASHER	M8 ZN
27	394367X1	5	HEX NYLON INSERT LOCKNUT	M8 (1.25) ISO 8 ZN
28	4289823M1	2	SPACER DIAMETER 8.9-13.5 X 60.5	
29	4286724M2	2	ROLL DIAMETER 25 X 59.5	

Massey Ferguson

MF 8450 / 8460 TRACTORS (TIER 3) - |---> P341051 / |---> P325039 (EXCEPT P332013) - 3906070

3906070

ENGINE & EQUIPMENT

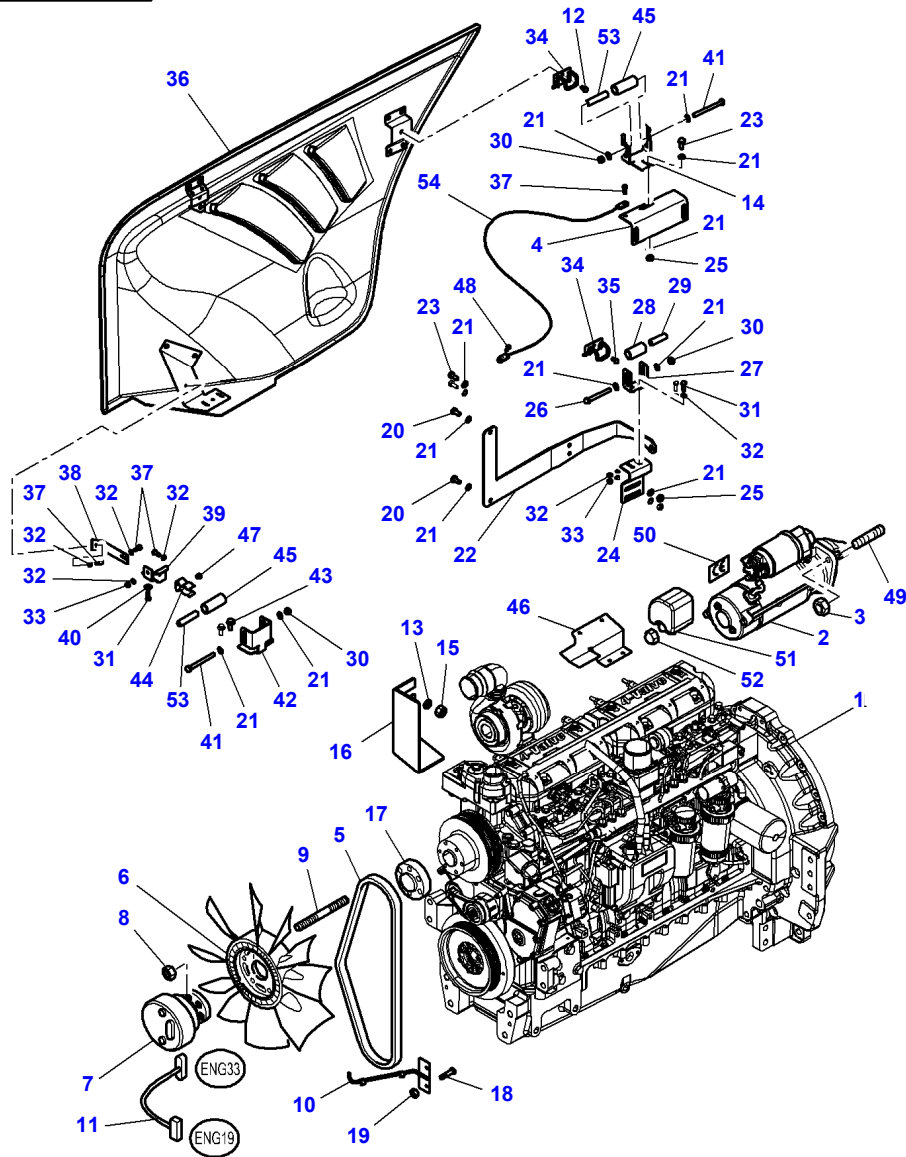
Page01-0002

FROM T021082 - GUARDS - LEFT SIDE

Item	Part Number	Qty	Description Comments	Technical Specification
30	4295244M1	1	SUPPORT	
31	391074X1	2	HEXAGONAL HEAD BOLT	M6 X 12 (1.0) ISO 8.8 ZN
32	4295254M1	1	BRACKET	
33	3780947M1	1	STOP	
34	390971X1	5	FLAT WASHER	M6 ZN
35	339030X1	3	HEX NUT	M6 (1.0) ISO 8 ZN
36	3010222X1	2	HEXAGON FLANGE BOLT	M8 X 20 (1.25) ISO 10.9 PH
37	4295252M2	1	SUPPORT	
38	1441500X1	1	HEX NYLON INSERT LOCKNUT	M6 (1.0) ISO 8 ZN
39	4276502M1	1	MOUNTING CLIP	Ø 25 MM
40	4295251M1	1	BRACKET	
41	339560X1	1	HEXAGONAL HEAD BOLT	M6 X 16 (1.0) ISO 8.8 ZN
42	4275844P94	1	PANEL LEFT HAND	
43	391038X1	1	FLAT WASHER	M6 ZN
44	339761X1	2	HEXAGONAL HEAD BOLT	M8 X 25 (1.25) ISO 8.8 ZN
45	4273770M2	1	SUPPORT, LEFT HAND	
46	4291061M2	1	COWL	
47	4284225M2	1	ROLL DIAMETER 25 X 45.5	
48	4289824M1	1	SPACER DIAMETER 8.9-13.5 X 46.5	
49	391005X1	3	STUD BOLT	M10 X 25 ISO 8.8 ZN
50	3788193M1	1	LABEL	
51	3786093M1	1	PROTECTION	
52	3786092M1	1	NUT METRIC	M10
53	4295242M1	1	BRACKET	
54	4295245M1	1	SUPPORT	

[A] INCLUDES FLYWHEEL**[B] THE APPROPRIATE SAFETY DECALS MUST BE ORDERED AND FITTED TO THIS PART****[C] NOT ILLUSTRATED**

1-WA06-054-A



Item	Part Number	Qty	Description Comments	Technical Specification
1	V835076118	1	ENGINE MF 8450 R / R. OLD NOT INTERCHANGEABLE WITH NEW V835061744 [A]	74 CTA-4V
	V865061744X	1	SHORT BLOCK ENGINE UP TO MACHINE S/N T022080 MF 8450 [C]	
	V865076118X	1	SHORT BLOCK ENGINE FROM MACHINE S/N T022081 MF 8450 [C]	
	V835076119	1	ENGINE MF 8460 R / R. OLD NOT INTERCHANGEABLE WITH NEW V835061745 [A]	74 CTA-4V
	V865061745X	1	SHORT BLOCK ENGINE UP TO MACHINE S/N T036046 MF 8460 [C]	
	V865076119X	1	SHORT BLOCK ENGINE FROM MACHINE S/N T036047 MF 8460 [C]	
2	4288991M2	1	STARTERMOTOR [B]	
3	339402X1	3	HEX NUT	M10 (1.5) ISO 8 ZN
4	4279547M2	1	SUPPORT FROM MACHINE S/N T046065	
	4296834M1	1	SUPPORT FROM MACHINE S/N T046066	
5	4284981M1	1	BELT UP TO MACHINE S/N T128080 LENGTH 1824 MM	
	4296120M1	1	BELT FROM MACHINE S/N T128081	L : 1815 MM
6	4274231M1	1	FAN DIAMETER 650 MM	
7	4276064M1	1	CLUTCH	
8	1441932X1	6	TOP LOCK NUT	M10 (1.5) ISO 8 ZN
9	3011353X1	6	STUD BOLT	M10X52-ISO 8.8-ZN
10	4276881M4	1	SUPPORT	
11	4272811M4	1	HARNES	
12	391074X1	1	HEXAGONAL HEAD BOLT	M6 X 12 (1.0) ISO 8.8 ZN
13	390734X1	2	PLAIN WASHER	Ø 10-21 X 2 MM
14	4295248M1	1	SUPPORT	
15	1441932X1	2	TOP LOCK NUT	M10 (1.5) ISO 8 ZN
16	4276812M4	1	COWL	
17	4270818M1	1	SPACER THICKNESS 30 MM	
18	339560X1	2	HEXAGONAL HEAD BOLT	M6 X 16 (1.0) ISO 8.8 ZN
19	339030X1	2	HEX NUT	M6 (1.0) ISO 8 ZN
20	339124X1	2	HEXAGONAL HEAD BOLT	M8 X 16 (1.25) ISO 8.8 ZN
21	390972X1	14	PLAIN WASHER	M8 ZN
22	4281865M2	1	SUPPORT	
23	339123X1	3	HEXAGONAL HEAD BOLT	M8 X 20 (1.25) ISO 8.8 ZN
24	4295246M1	1	SUPPORT	
25	339169X1	3	HEX NUT	M8 (1.25) ISO 8 ZN
26	390246X1	1	HEXAGONAL HEAD BOLT	M8 X 70 (1.25) ISO 8.8 ZN

Massey Ferguson

MF 8450 / 8460 TRACTORS (TIER 3) - |---> P341051 / |---> P325039 (EXCEPT P332013) - 3906070

3906070

ENGINE & EQUIPMENT

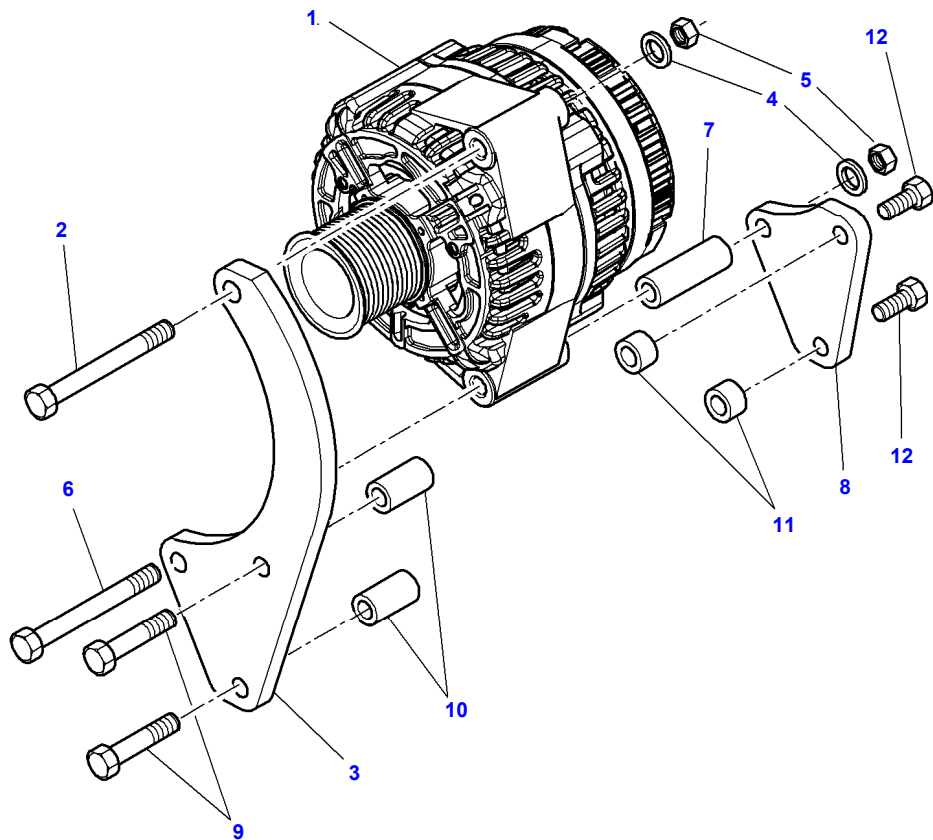
Page01-0003

FROM T021082 - GUARDS - RIGHT SIDE

Item	Part Number	Qty	Description Comments	Technical Specification
27	4295247M1	1	SUPPORT	
28	4284225M2	1	ROLL DIAMETER 25 X 45.5	
29	4289824M1	1	SPACER DIAMETER 8.9-13.5 X 46.5	
30	394367X1	2	HEX NYLON INSERT LOCKNUT	M8 (1.25) ISO 8 ZN
31	339666X1	3	HEXAGONAL HEAD BOLT	M6 X 20 (1.0) ISO 8.8 ZN
32	390971X1	8	FLAT WASHER	M6 ZN
33	339030X1	3	HEX NUT	M6 (1.0) ISO 8 ZN
34	4295241M1	2	BRACKET	
35	391074X1	1	HEXAGONAL HEAD BOLT	M6 X 12 (1.0) ISO 8.8 ZN
36	4276108P95	1	RIGHT HAND PANEL RIGHT HAND	
37	339560X1	4	HEXAGONAL HEAD BOLT	M6 X 16 (1.0) ISO 8.8 ZN
38	4295253M1	1	REINFORCEMENT	
39	4295249M1	1	BRACKET	
40	391038X1	1	FLAT WASHER	M6 ZN
41	391286X1	2	HEXAGONAL HEAD BOLT	M8 X 85 (1.25) ISO 8.8 ZN
42	4295250M1	1	SUPPORT	
43	3010222X1	2	HEXAGON FLANGE BOLT	M8 X 20 (1.25) ISO 10.9 PH
44	4276502M1	1	MOUNTING CLIP	Ø 25 MM
45	4286724M2	2	ROLL DIAMETER 25 X 59.5	
46	4291061M2	1	COWL	
47	1441500X1	1	HEX NYLON INSERT LOCKNUT	M6 (1.0) ISO 8 ZN
48	376820X1	1	RIVET	Ø 4,8 X 12,5 MM PL
49	391005X1	3	STUD BOLT	M10 X 25 ISO 8.8 ZN
50	3788193M1	1	LABEL	
51	3786093M1	1	PROTECTION	
52	3786092M1	1	NUT METRIC	M10
53	4289823M1	2	SPACER DIAMETER 8.9-13.5 X 60.5	
54	3783347M2	1	CABLE	

[A] INCLUDES FLYWHEEL**[B] THE APPROPRIATE SAFETY DECALS MUST BE ORDERED AND FITTED TO THIS PART****[C] NOT ILLUSTRATED**

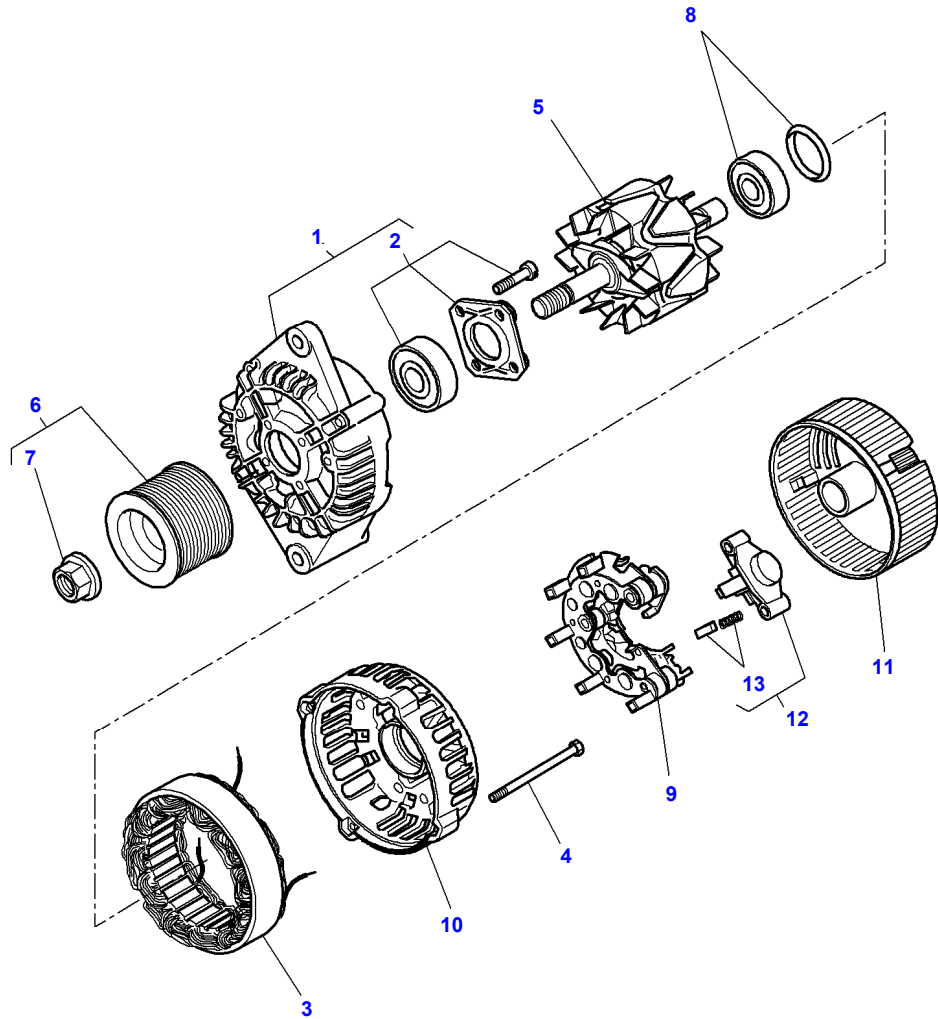
1-WA10-014-A



ALTERNATOR & BRACKET

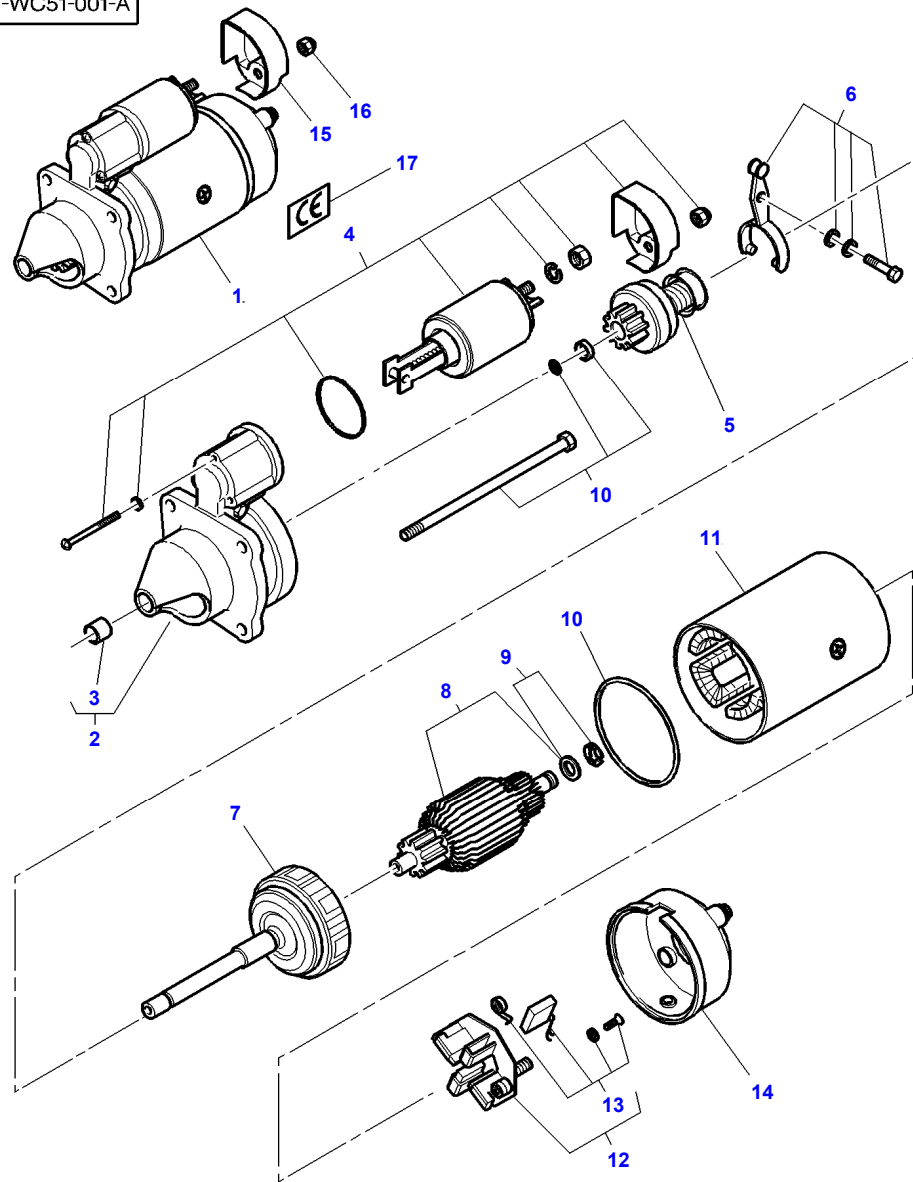
Item	Part Number	Qty	Description Comments	Technical Specification
1	3789453M92	1	ALTERNATOR 150 AMP SEE PAGE 01-0005	
2	339488X1	1	HEXAGONAL HEAD BOLT	M10 X 85 (1.5) ISO 8.8 ZN
3	4282982M1	1	SUPPORT	
4	390734X1	2	PLAIN WASHER	Ø 10-21 X 2 MM
5	1441932X1	2	TOP LOCK NUT	M10 (1.5) ISO 8 ZN
6	3002813X1	1	HEXAGONAL HEAD BOLT	M10 X 145 ISO 8.8 PL
7	4282985M1	1	SPACER	
8	4282983M1	1	SUPPORT	
9	339132X1	2	HEXAGONAL HEAD BOLT	M8 X 75 (1.25) ISO 8.8 ZN
10	4282984M1	2	SPACER	
11	3011180X1	2	SPACER	Ø 8,5-9,5 MM E24-2 ZN
12	339009X1	2	HEXAGONAL HEAD BOLT	M8 X 35 (1.25) ISO 8.8 ZN

1-WC35-005-C



Item	Part Number	Qty	Description Comments
1	3789453M92	1	ALTERNATOR
		1	KIT, DRIVE NOT SERVICED, ORDER REF. 0
2	3907186M91	1	KIT, BEARING (1)
3		1	STATOR NOT SERVICED, ORDER REF. 0
4	3907187M1	1	BOLT
5		1	ROTOR NOT SERVICED, ORDER REF. 0
6	3907189M91	1	PULLEY
7		1	PARTS PACK (6) NOT SERVICED, ORDER REF. 6
8	3907193M91	1	KIT, BEARING
9	3907190M91	1	RECTIFIER
10		1	HOUSING NOT SERVICED, ORDER REF. 0
11	3907191M1	1	COVER
12	3907192M91	1	REGULATOR
13		1	BRUSH (12) NOT SERVICED, ORDER REF. 12

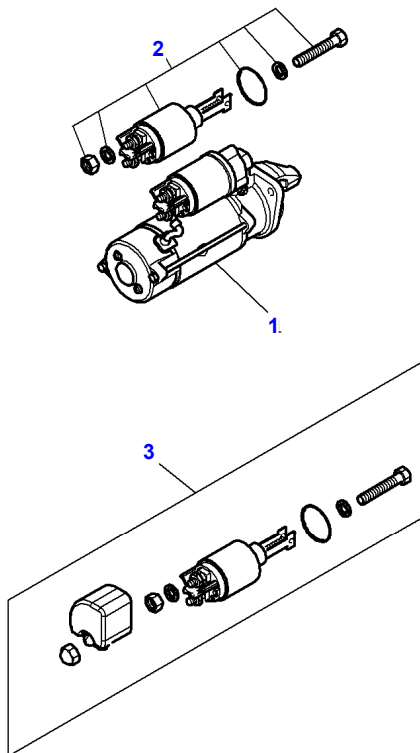
1-WC51-001-A



Item	Part Number	Qty	Description	Technical Specification
1	3823621M91	1	STARTERMOTOR [A]	
2		1	HOUSING (1) NOT SERVICED, ORDER REF. 1	
3	3903761M1	1	BUSH (2)	
4	3904366M91	1	KIT, SOLENOID (1)	
5	3904360M1	1	DRIVE GEAR (1)	
6	3904361M91	1	LEVER KIT (1)	
7		1	REDUCER (1) NOT SERVICED, ORDER REF. 1	
8		1	ROTOR (1) NOT SERVICED, ORDER REF. 1	
9	3904362M91	1	KIT, BEARING (1)	
10	3904363M91	1	PARTS PACK (1)	
11		1	STATOR (1) NOT SERVICED, ORDER REF. 1	
12	3904364M91	1	HOLDER (1)	
13	3904365M91	1	KIT, BRUSH (12)	
14		1	COVER (1) NOT SERVICED, ORDER REF. 1	
15	3786093M1	1	PROTECTION	M10
16	3786092M1	1	NUT METRIC	
17	3788193M1	1	LABEL	

[A] THE APPROPRIATE SAFETY DECALS MUST BE ORDERED AND FITTED TO THIS PART

1-WC51-004-A

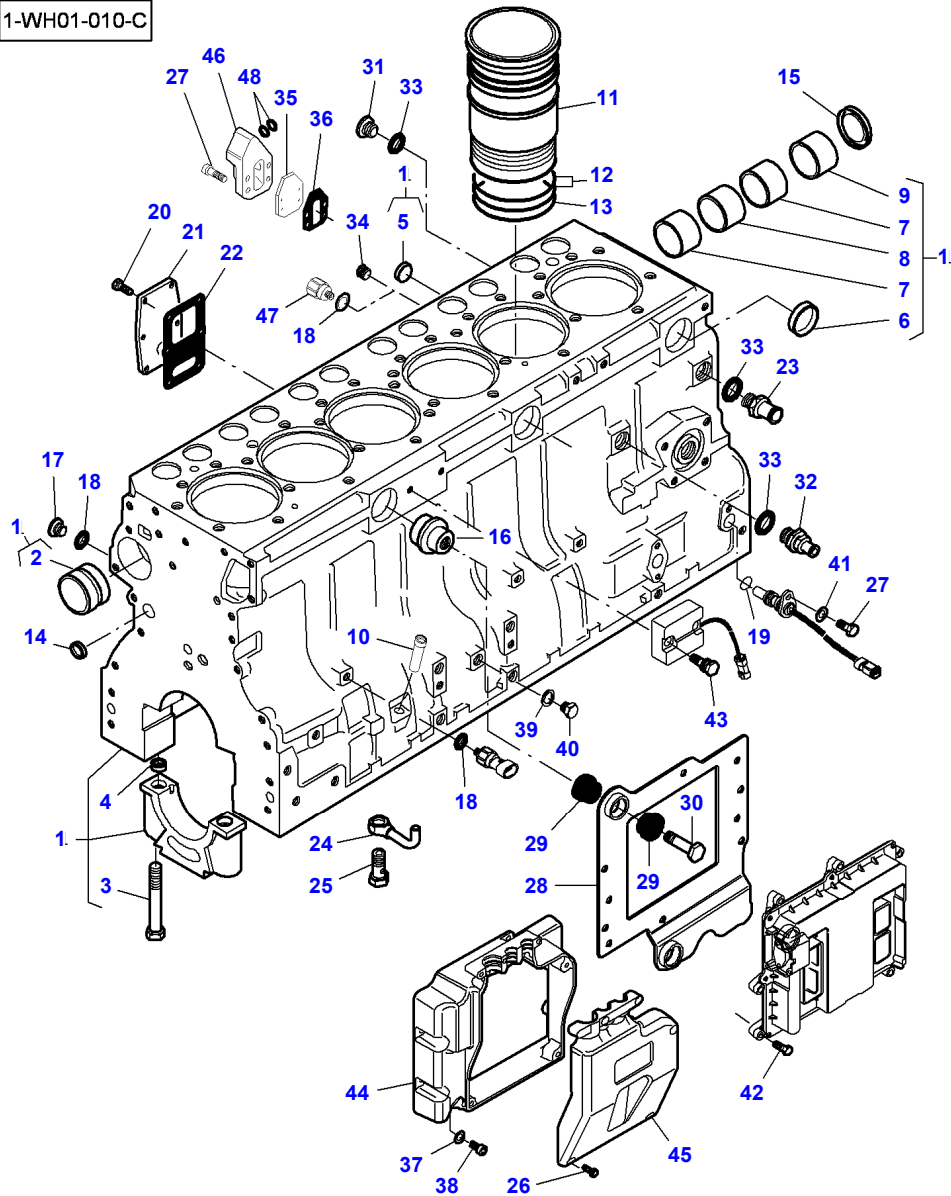


FROM S/N S051056 - EXCEPT TRACTOR S/N S039058

Item	Part Number	Qty	Description	Comments
1	4288991M2	1	STARTERMOTOR	
2	3904366M91	1	KIT, SOLENOID UP TO MACHINE S/N T036072	[A]
3	3905503M91	1	KIT, SOLENOID FROM MACHINE S/N T036073	

[A] THE APPROPRIATE SAFETY DECALS MUST BE ORDERED AND FITTED TO THIS PART

1-WH01-010-C



Massey Ferguson		3906070		Page01-0008	
MF 8450 / 8460 TRACTORS (TIER 3) - ---> P341051 / ---> P325039 (EXCEPT P332013) - 3906070					
CYLINDER BLOCK					
Item	Part Number	Qty	Description Comments	Technical Specification	
1	V837070103	1	CYLINDER BLOCK		
2	V836866069	1	CAMSHAFT BEARING BUSH (1)		
	V836866036	X	CAMSHAFT BEARING BUSH THICKNESS + 0.40 MM	+ 0.40 MM	
3	V529903180	14	HEX CAP SCREW (1)		
4	V836214478	78	GUIDE SLEEVE (1)		
5	V640016018	1	CUP PLUG (1)		
6	V640016040	2	CUP PLUG (1)		
7	V836852460	2	CAMSHAFT BEARING BUSH (1)		
8	V836852459	1	CAMSHAFT BEARING BUSH (1)		
9	V836852461	1	CAMSHAFT BEARING BUSH (1)		
10	V836666910	1	OIL DIPSTICK GUIDE PIPE UP TO MACHINE S/N S20722		
	V837070393	1	SLEEVE FROM MACHINE S/N S20723		
11	V836673191	6	LINER	D108 MM STD	
	V836647933	X	LINER THICKNESS 9.08 MM	FLANGE HEIGHT + 0.05 MM	
	V836647934	X	LINER THICKNESS 9.13 MM	FLANGE HEIGHT + 0.10 MM	
	V836647935	X	LINER THICKNESS 9.23MM	FLANGE HEIGHT + 0.15 MM	
12	V836647502	12	CYLINDER LINER O-RING		
13	V836647503	6	CYLINDER LINER O-RING		
14	V640016016	4	CUP PLUG		
15	V836852744	1	PLUG		
16	V837069057	1	PLUG		
17	V640325110	4	SCREW PLUG		
18	V615871014	6	SEALING WASHER		
19	V614601524	1	O-RING		
20	V528801380	6	HEX CAP SCREW M8 X 20		
21	V836847994	1	FLANGE		
22	V836322852	1	GASKET		
23	V836119837	1	HOSE COUPLER		
24	V837070021	6	PIPE		
25	V836338601	6	PRESSURE VALVE		
26	V590253388	6	SCREW 5.1 X 14		
27	V528801362	1	HEX CAP SCREW UP TO MACHINE S/N S20722		
	V581804670	1	HEX SOCKET SCREW FROM MACHINE S/N S20723		
			M8 X 50		
28	V837070147	1	ECU BRACKET		
29	V837069052	6	RUBBER BUSH		
30	V837069056	3	HEX CAP SCREW		
31	V640325018	1	SCREW PLUG		
32	V836664377	1	DRAIN VALVE		
33	V615881824	3	SEALING WASHER		
34	V640025010	1	PLUG UP TO MACHINE S/N S20722		
35	V836866957	1	COVER FROM MACHINE S/N S20723		
36	V836866958	1	GASKET		

Massey Ferguson

MF 8450 / 8460 TRACTORS (TIER 3) - |---> P341051 / |---> P325039 (EXCEPT P332013) - 3906070

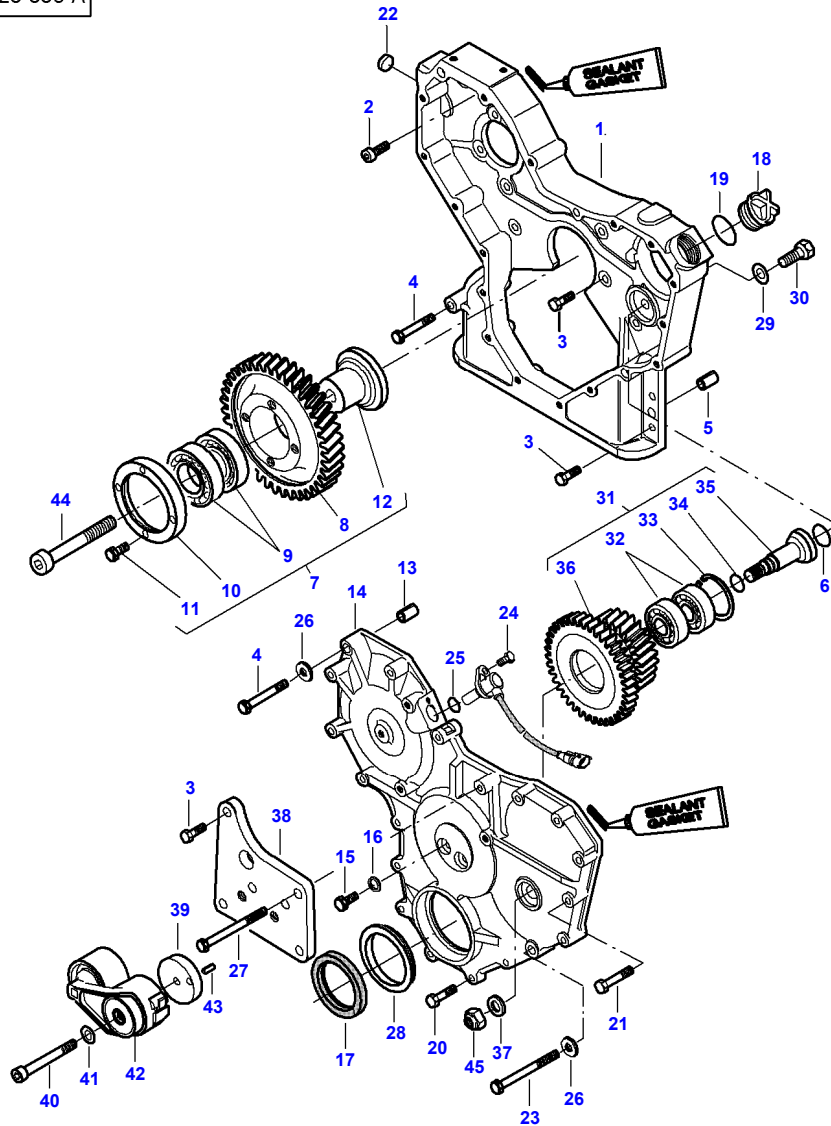
3906070

CYLINDER BLOCK

Page01-0008

Item	Part Number	Qty	Description Comments	Technical Specification
37	V500150642	5	WASHER	
38	V581804182	5	HEX SOCKET SCREW M6 X 16	
39	V615881216	1	SEALING WASHER	
40	V640045112	1	PLUG	
41	V500050842	1	WASHER	
42	V529801102	8	HEX CAP SCREW M6 X 25	
43	V837070197	2	SCREW	
44	V837070285	1	COVER	
45	V837070286	1	COVER	
46	V837067969	1	ADAPTER BLOCK FROM MACHINE S/N S20723	
47	V836120022	1	UNION FROM MACHINE S/N S20723	
48	V614903430	2	O-RING	

1-WH20-006-A



Massey Ferguson				Page01-0009	
MF 8450 / 8460 TRACTORS (TIER 3) - ---> P341051 / ---> P325039 (EXCEPT P332013) - 3906070					
TIMING GEAR HOUSING					
Item	Part Number	Qty	Description Comments	Technical Specification	
1	V837070062	1	TIMING GEAR CASE		
2	V581804620	2	HEX SOCKET SCREW M8 X 25		
3	V528801400	14	HEX CAP SCREW M8 X 25		
4	V529801470	2	HEX CAP SCREW M8 X 60		
5	V598359850	2	PIN		
6	V614601924	1	O-RING		
7	V837070001	1	KIT, GEAR		
8	V837070000	1	IDLER GEAR (7)		
9	V610072109	1	BALL BEARING (7)		
10	V836855565	1	RING (7)		
11	V528901400	4	HEX CAP SCREW (7) M8 X 16		
12	V836855562	1	SHAFT (7)		
13	V598359860	2	PIN UP TO MACHINE S/N S20722		
	V598359850	2	PIN FROM MACHINE S/N S20723		
14	V837070162	1	GEAR HOUSING FRONT COVER		
15	V528801380	2	HEX CAP SCREW M8 X 20		
16	V615870814	2	SEALING WASHER		
17	V836840883	1	CRANKSHAFT SEAL		
	V836873100	X	SPACER RING THICKNESS 3.00 MM	+ 3.00 MM	
18	V836017927	1	CAP		
19	V614603540	1	O-RING		
20	V528801410	6	HEX CAP SCREW M8 X 30		
21	V529801440	10	HEX CAP SCREW M8 X 45		
22	V640016016	1	CUP PLUG		
23	V529801550	1	HEX CAP SCREW M8 X 95		
24	V528801062	1	HEX CAP SCREW M6 X 16		
25	V614601718	1	O-RING		
26	V836120989	2	WASHER		
27	V529801560	1	HEX CAP SCREW M8 X 105		
28	V836855636	1	SHIELD		
29	V500951200	1	SPRING WASHER		
30	V528902200	1	HEX CAP SCREW UP TO SERIAL OR ENGINE NUMBER M12 X 25 H		
	V581705420	1	HEX SOCKET SCREW FROM SERIAL OR ENGINE NUMBER M12 X 25 CHC		
31	V837070086	1	DUAL GEAR WHEEL		
32	V610073040	1	BALL BEARING (31)		
33	V617330052	1	LOCK RING (31)		
34	V614601324	1	O-RING (31)		
35	V837069069	1	SHAFT (31)		
36	V837070112	1	DUAL GEAR WHEEL (31)		
37	V837069070	1	WASHER		
38	V837070228	1	BRACKET		

Massey Ferguson

MF 8450 / 8460 TRACTORS (TIER 3) - |---> P341051 / |---> P325039 (EXCEPT P332013) - 3906070

3906070

TIMING GEAR HOUSING

Page01-0009

Item	Part Number	Qty	Description Comments	Technical Specification
39	V837067787	1	FLANGE UP TO MACHINE S/N S20722	
	V836873044	1	FLANGE FROM MACHINE S/N S20723	
40	V581805170	1	HEX SOCKET SCREW UP TO MACHINE S/N S20722 M10 X 100	
	V581805150	1	HEX SOCKET SCREW FROM MACHINE S/N S20723 M10 X 90	
41	V500951000	1	SPRING WASHER	
42	V836667411	1	TENSIONER UP TO MACHINE S/N S20722	
	V836667827	1	BELT TENSIONER FROM MACHINE S/N S20723	
43	V595954600	1	PIN	
44	V581705910	1	HEX SOCKET SCREW M14 X 70	
45	V504601400	1	NUT M14	

This as a preview PDF file from best-manuals.com



Download full PDF manual at best-manuals.com